



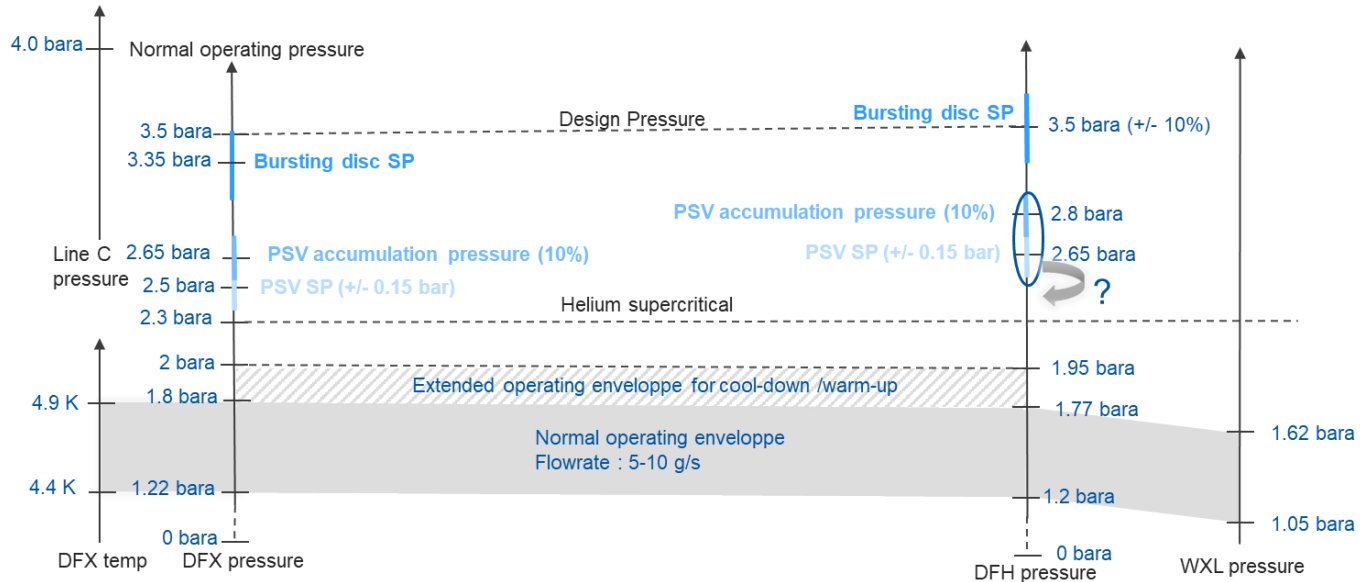
Proposal for safety valve / burst disc set pressures for DFX/DFH Cryo for WP6a

V. Gahier



15/01/2020

Staggered PSV / Burst disc proposal (preliminary)



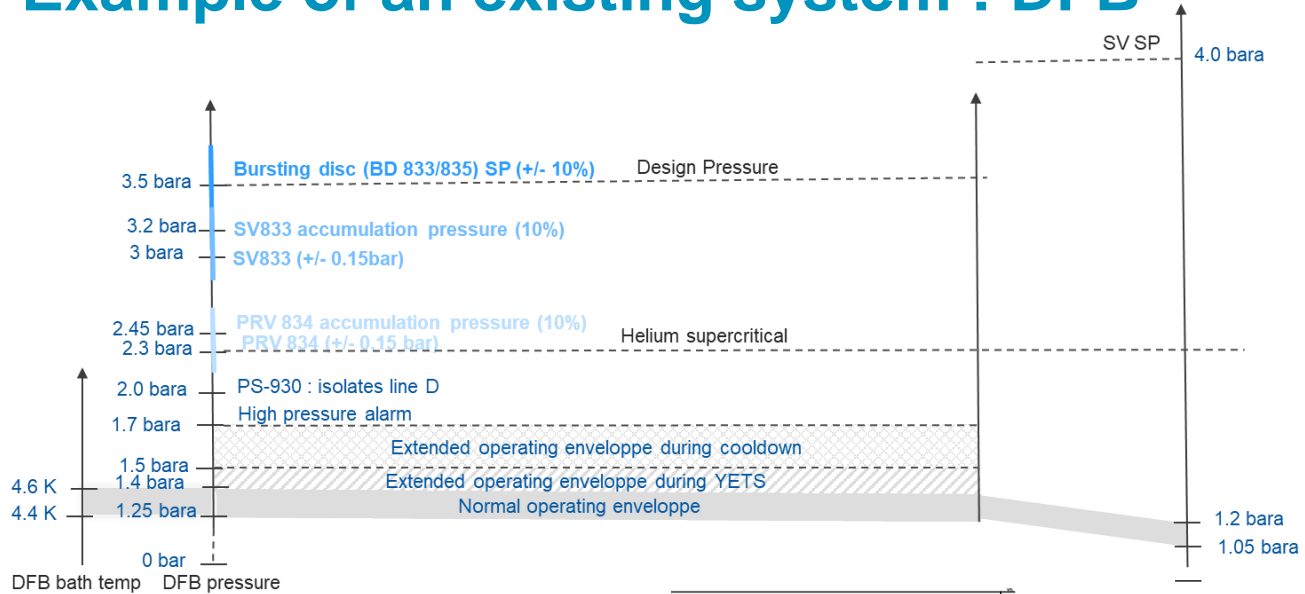
Eqt	DFX	Superconducting link	DFH
He Mass	~50 kg (TBC)	~5 kg (TBC)	~6 kg (TBC)
People	No*	TBC	Yes
BD flow** (TBC)	1000-2000 g/s	1000-2000 g/s (peak)	100-200 g/s
PSV flow (TBC)	10 g/s	10 g/s	10 g/s

*Yes when current intensity is limited and machine off

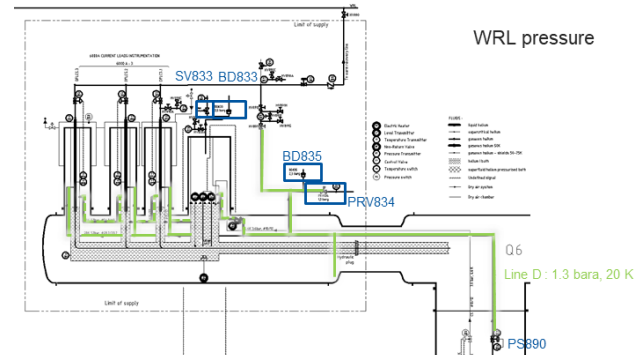
** in case of vacuum loss.

To edit speaker name go to Insert > Header & Footer and apply to all slides except title page

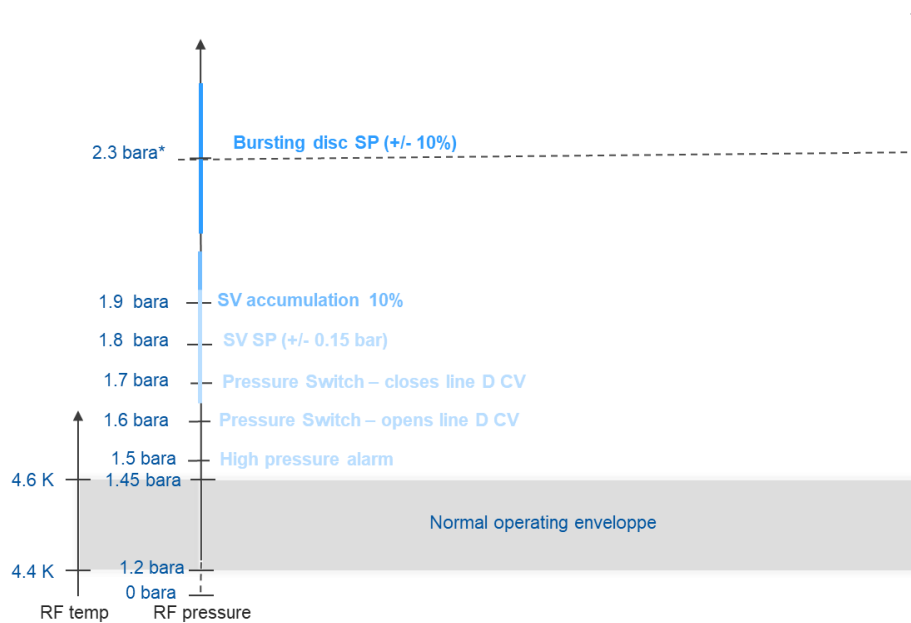
Example of an existing system : DFB



Eqt	DFB	Line D d/s supply
People	No*	No*
Design Pressure	3.5 bara	3.5 bara
BD flow**	1900 g/s	700 g/s
Helium mass	< 10 kg	NA



Example of an existing system : RF cavity



*P&ID indicates BD Set Pressure at 2.1 bara, however order shows SP at 2.3 bara.