

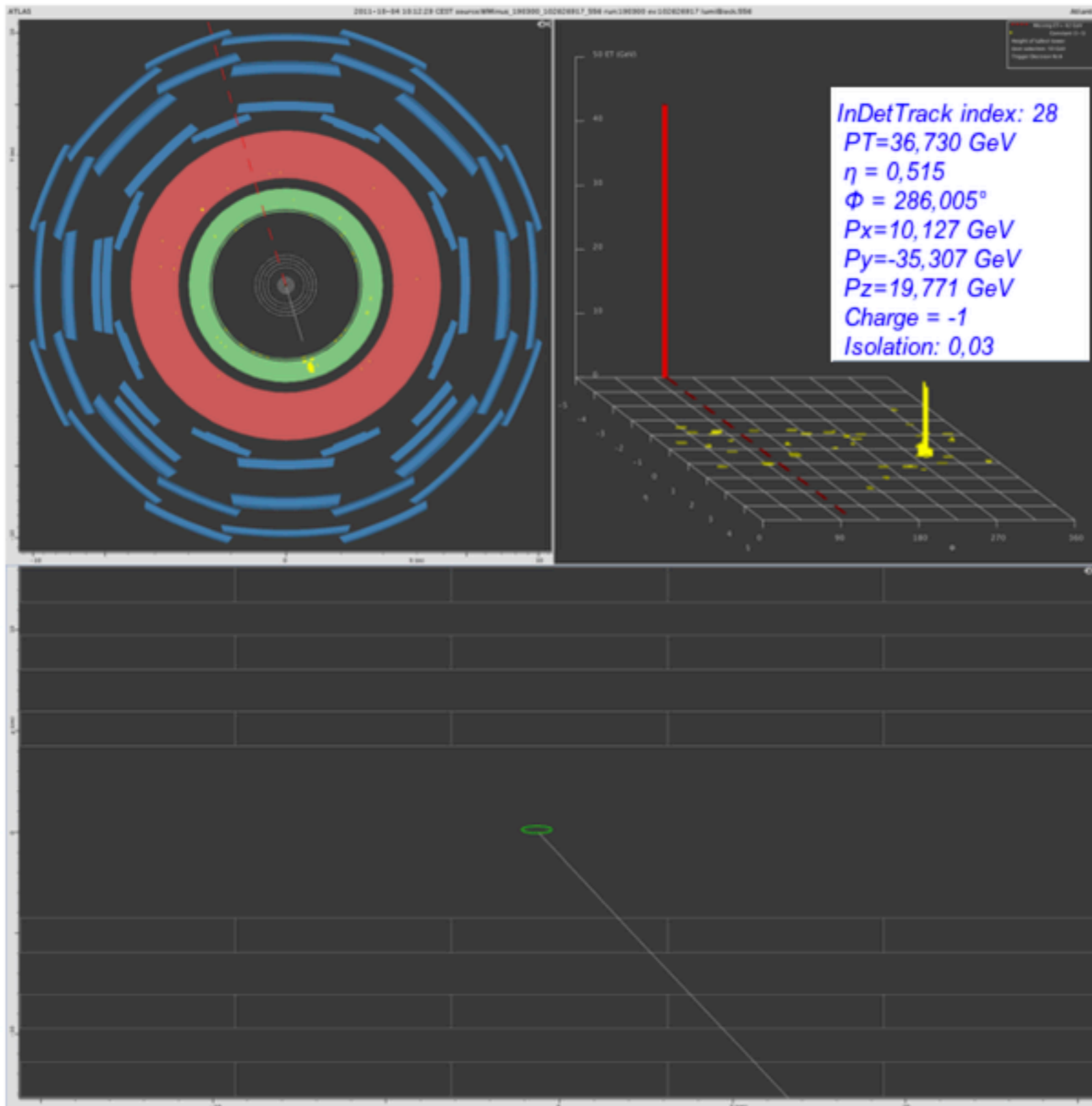
Physics of the W path

U. Bilow, C. Bittrich, K. Jende, M. Kobel, F. Socher

20.02.2020

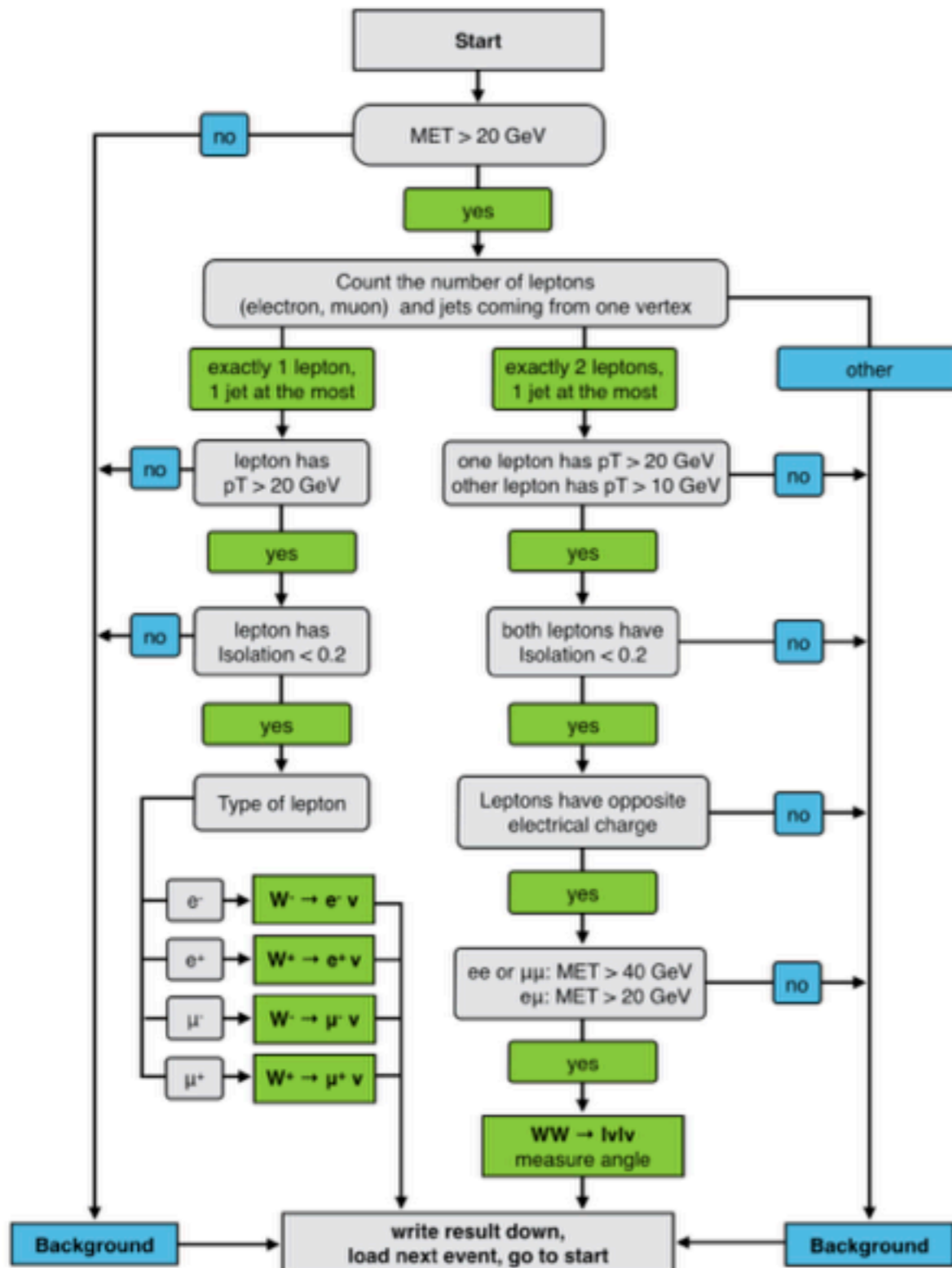
- W-path consists of two measurements:
 - W^+/W^- ratio from single W events \rightarrow determines the composition of the proton
 - search for the Higgs in WW $\rightarrow \ell\nu\ell\nu$ events
- instructions for the students:
<http://atlas.physicsmasterclasses.org/en/wpath.htm>
- Recommended moderation scenarios at:
https://twiki.cern.ch/twiki/bin/view/Main/InternationalMasterclassesModeratorManual#Scenarios_Questions_for_5_gr_AN1
- two aspects will be discussed:
 - W^+/W^- ratio: how to get from the measured ratio to the composition of the proton
 - $H \rightarrow WW$ candidates: how significant is the measurement

What the students do:



- The students analyze event displays like the one on the left
- the events are categorized using a flowchart

What the students do:



- categorize each event as
 - a single W event
 - a WW event
 - background
- if the event is a single W event:
 - determine the type and charge of the lepton
- if the event is a WW candidate
 - measure the azimuthal opening angle $\Delta\phi_{\ell\ell}$
- if the event is background
 - discard

- go to: http://atlas.physicsmasterclasses.org/results/wpath_moderator.php
- this site can be reached from <http://www.atlas.physicsmasterclasses.org>
- there are two parts:
 - inner structure of the proton
 - search for the Higgs
- the drop down menus contain the dates of masterclasses, choose the date of the masterclass you are moderating:

Analysis

Inner structure of the proton: Measurement of $|W^+|/|W^-|$

✓ Please choose the date...

01/02/2018
01/24/2018
02/01/2018

Search for the Higgs in the $H \rightarrow WW \rightarrow l^+ l^- \nu \nu$ decay channel: angular distribution

Please choose the date... ⌵

Content

Aims/Tasks

Identifying particles

Identifying Events

Measurement

Analysis

For moderators

Supporting material

Analysis

Total #	W → ... + ν				Background	WW
	e ⁺	e ⁻	μ ⁺	μ ⁻		
4354						
Braganca	239	207	208	175	345	145
Cosenza	127	76	147	106	481	64
Erlangen	130	107	128	92	482	41
Mainz	136	103	153	110	0	0
Nitra	106	73	76	52	209	36
Total	738	566	712	535	1517	286
Σ W ⁺ , Σ W ⁻	W ⁺	1450	W ⁻	1101	W ⁺ + W ⁻	2551
Ratio	 W⁺ / W⁻ 			1.32	±	0.05

Comparison with results of the ATLAS collaboration (from 2011):

Measurement of the W → lν and Z/γ* → ll production cross sections in proton-proton collisions at sqrt(s) = 7 TeV with the ATLAS detector^{*)} and Search for the Standard Model Higgs boson in the H → WW(*,*) → llνν decay mode using 1.7 fb⁻¹ of data collected with the ATLAS detector at sqrt(s) = 7 TeV^{**)}

^{*)} Authors: The ATLAS Collaboration (Submitted on 5 Dec 2011): <http://arxiv.org/abs/1109.5141>.pdf

^{**)} Authors: The ATLAS Collaboration (24 Aug 2011): ATLAS-CONF-2011-134

	W → ... + ν				Background	WW cand.
	e ⁺	e ⁻	μ ⁺	μ ⁻		
Total	77885	52856	84514	55234	21930	469
Σ W ⁺ , Σ W ⁻	W ⁺	162399	W ⁻	108090	W ⁺ + W ⁻	270489
Ratio	 W⁺ / W⁻ 			1.50	±	0.03

- the page will show the tables on the left
- red table shows results combined from all institutes
- blue table shows results from ATLAS
- main result in table is W⁺/W⁻ ratio
- structure of the proton should already have been discussed in each institute individually
 - step from ratio to composition of the proton is described here: http://atlas.physicsmasterclasses.org/en/wpath_auswertung.htm

Analysis

Total #	$W \rightarrow \dots + \nu$				Background	WW
	e^+	e^-	μ^+	μ^-		
4354						
Braganca	239	207	208	175	345	145
Cosenza	127	76	147	106	481	64
Erlangen	130	107	128	92	482	41
Mainz	136	103	153	110	0	0
Nitra	106	73	76	52	209	36
Total	738	566	712	535	1517	286
$\Sigma W^+ , \Sigma W^- $	$ W^+ $	1450	$ W^- $	1101	$ W^+ + W^- $	2551
Ratio	$ W^+ / W^- $			1.32	\pm	0.05

Comparison with results of the ATLAS collaboration (from 2011):

Measurement of the $W \rightarrow l\nu$ and $Z/\gamma^* \rightarrow ll$ production cross sections in proton-proton collisions at $\sqrt{s} = 7$ TeV with the ATLAS detector* and Search for the Standard Model Higgs boson in the $H \rightarrow WW^{(*)} \rightarrow ll\nu\nu$ decay mode using 1.7 fb⁻¹ of data collected with the ATLAS detector at $\sqrt{s} = 7$ TeV**

*) Authors: The ATLAS Collaboration (Submitted on 5 Dec 2011): <http://arxiv.org/abs/1109.5141>.pdf

**) Authors: The ATLAS Collaboration (24 Aug 2011): ATLAS-CONF-2011-134

	$W \rightarrow \dots + \nu$				Background	WW cand.
	e^+	e^-	μ^+	μ^-		
Total	77885	52856	84514	55234	21930	469
$\Sigma W^+ , \Sigma W^- $	$ W^+ $	162399	$ W^- $	108090	$ W^+ + W^- $	270489
Ratio	$ W^+ / W^- $			1.50	\pm	0.03

Moderation scenario questions:

- Q1: What was your result for the W^+/W^- ratio? How did the combination with other institutes change the total result?
- Q2: Is the result compatible with the results measured at ATLAS

Analysis

Total #	$W \rightarrow \dots + \nu$				Background	WW
	e^+	e^-	μ^+	μ^-		
4354						
Braganca	239	207	208	175	345	145
Cosenza	127	76	147	106	481	64
Erlangen	130	107	128	92	482	41
Mainz	136	103	153	110	0	0
Nitra	106	73	76	52	209	36
Total	738	566	712	535	1517	286
$\Sigma W^+ , \Sigma W^- $	$ W^+ $	1450	$ W^- $	1101	$ W^+ + W^- $	2551
Ratio	$ W^+ / W^- $			1.32	\pm	0.05

Comparison with results of the ATLAS collaboration (from 2011):

Measurement of the $W \rightarrow l\nu$ and $Z/\gamma^* \rightarrow ll$ production cross sections in proton-proton collisions at $\sqrt{s} = 7$ TeV with the ATLAS detector* and Search for the Standard Model Higgs boson in the $H \rightarrow WW^{(*)} \rightarrow ll\nu\nu$ decay mode using 1.7 fb⁻¹ of data collected with the ATLAS detector at $\sqrt{s} = 7$ TeV**

*) Authors: The ATLAS Collaboration (Submitted on 5 Dec 2011): <http://arxiv.org/abs/1109.5141>.pdf

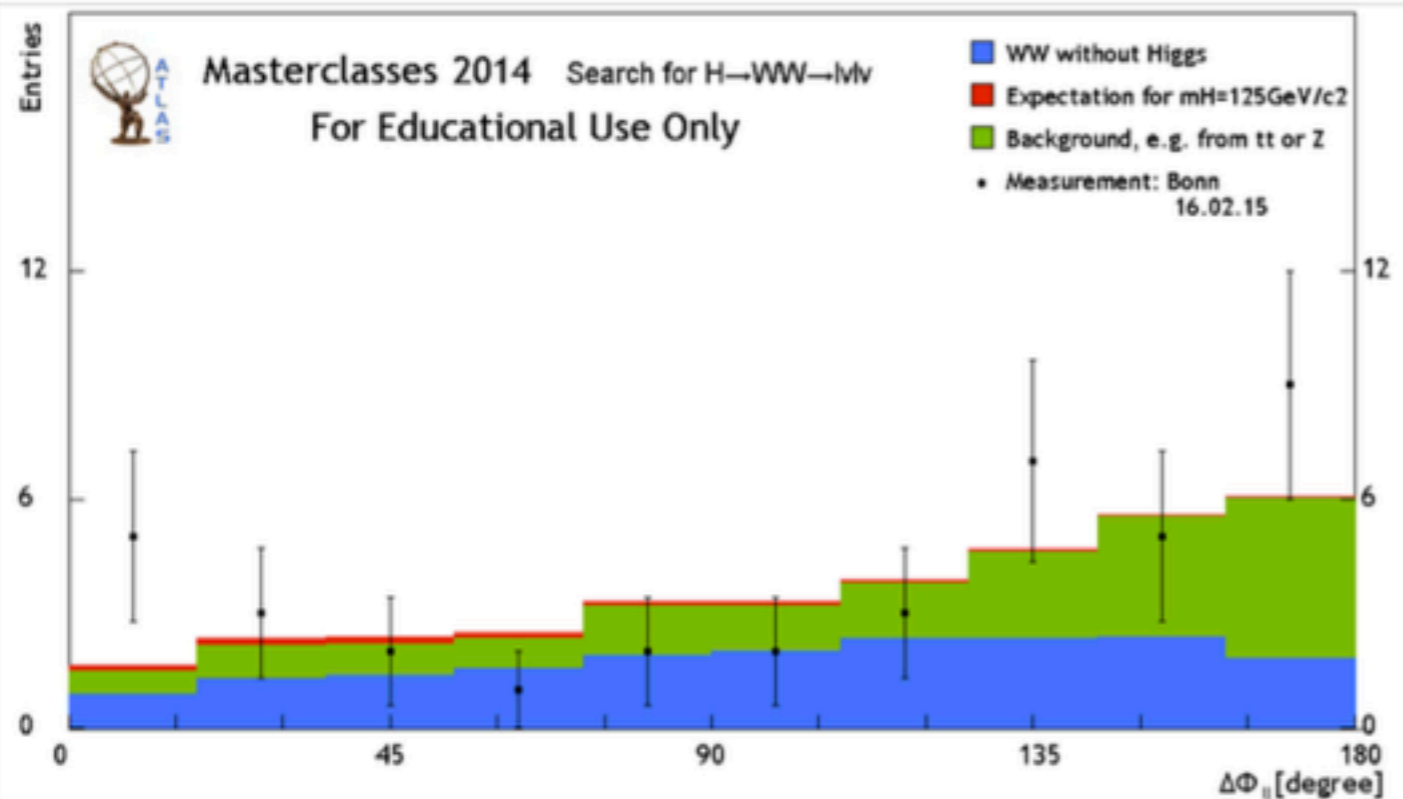
**) Authors: The ATLAS Collaboration (24 Aug 2011): ATLAS-CONF-2011-134

	$W \rightarrow \dots + \nu$				Background	WW cand.
	e^+	e^-	μ^+	μ^-		
Total	77885	52856	84514	55234	21930	469
$\Sigma W^+ , \Sigma W^- $	$ W^+ $	162399	$ W^- $	108090	$ W^+ + W^- $	270489
Ratio	$ W^+ / W^- $			1.50	\pm	0.03

Further things to discuss:

- the datasets contain 50% single W events and 42% background, ratio is about 1.2
- the W^+/W^- ratio should be compatible with 1.5 within statistical uncertainty
- compare to ATLAS measurement
→ smaller uncertainty, larger statistics

WW-Histogramme



	bin 1	bin 2	bin 3	bin 4	bin 5	bin 6	bin 7	bin 8	bin 9	bin 10	SUM
N	5	3	2	1	2	2	3	7	5	9	39
B	1.5	2.2	2.2	2.4	3.2	3.2	3.8	4.6	5.6	6	34.7
S	3.5	0.8	-0.2	-1.4	-1.2	-1.2	-0.8	2.4	-0.6	3	4.3
Z	2.8	0.5	-0.1	-0.9	-0.7	-0.7	-0.4	1.1	-0.2	1.2	0.7

- the results for $H \rightarrow WW$ are discussed via this histogram
- Options:
 - number of bins can be set
 - histogram normalization (standardization)
 - 1: normalized to expected number of WW candidates in analyzed data
 - 2: normalized to number of found WW candidates
 - 3: normalized to number of WW candidates found with $\Delta\phi_{\ell\ell} \geq 115^\circ$
- Higgs contribution can be toggled on or off**

number of bins [1 ... 20]

standardization 1 2 3

Higgs contribution

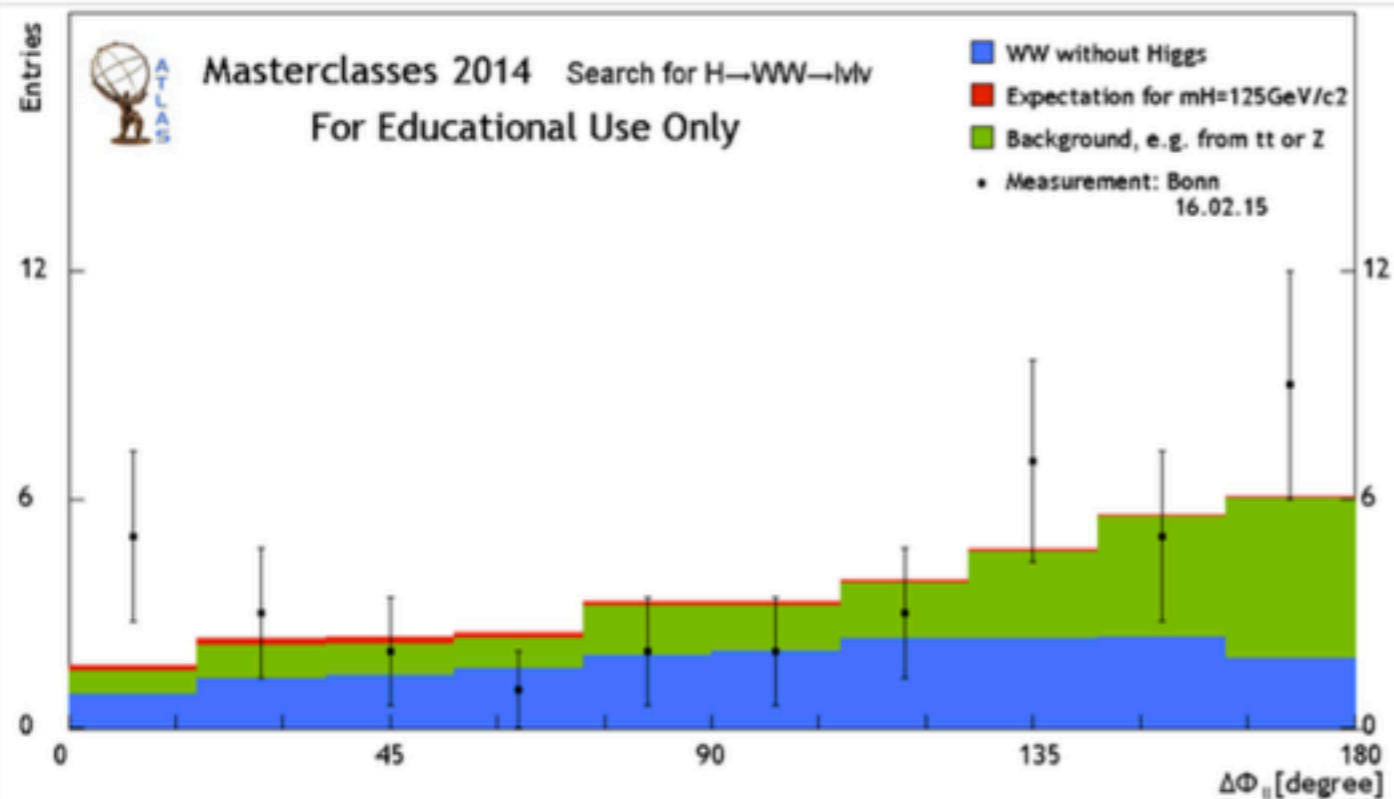
maximum of y axis

cut on bin number

Submit

Default

WW-Histogramme



	bin 1	bin 2	bin 3	bin 4	bin 5	bin 6	bin 7	bin 8	bin 9	bin 10	SUM
N	5	3	2	1	2	2	3	7	5	9	39
B	1.5	2.2	2.2	2.4	3.2	3.2	3.8	4.6	5.6	6	34.7
S	3.5	0.8	-0.2	-1.4	-1.2	-1.2	-0.8	2.4	-0.6	3	4.3
Z	2.8	0.5	-0.1	-0.9	-0.7	-0.7	-0.4	1.1	-0.2	1.2	0.7

Moderation scenario questions:

- Q3: You have measured the angle between the two leptons. Let's have a look at that. What exactly do the black data points mean?
- Q4: How would you interpret the blue and green areas? What do they mean?

After turning on the Higgs contribution:

- Q5: Can you claim a Higgs discovery? What would be necessary to claim a discovery?

number of bins [1 ... 20]

standardization 1 2 3

Higgs contribution

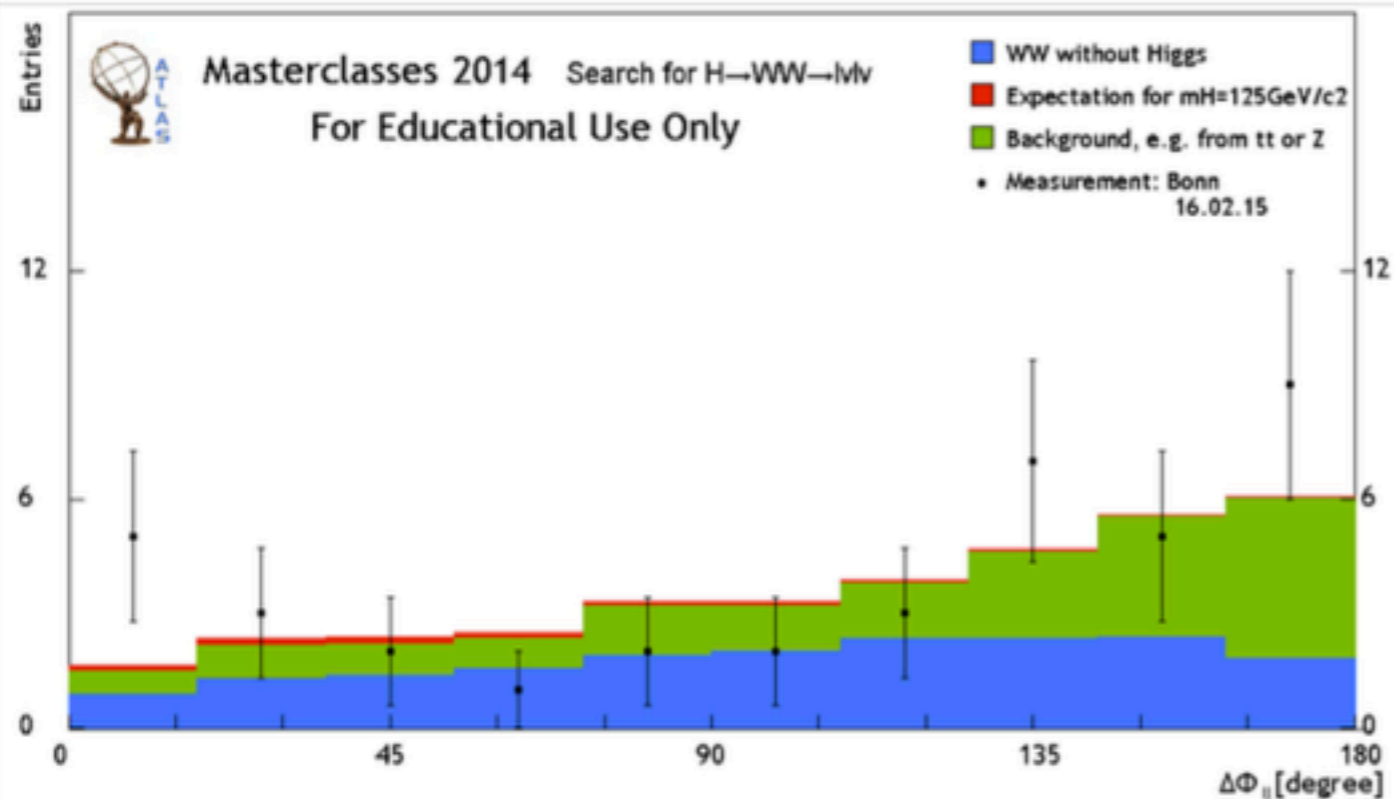
maximum of y axis

cut on bin number

Submit

Default

WW-Histogramme



	bin 1	bin 2	bin 3	bin 4	bin 5	bin 6	bin 7	bin 8	bin 9	bin 10	SUM
N	5	3	2	1	2	2	3	7	5	9	39
B	1.5	2.2	2.2	2.4	3.2	3.2	3.8	4.6	5.6	6	34.7
S	3.5	0.8	-0.2	-1.4	-1.2	-1.2	-0.8	2.4	-0.6	3	4.3
Z	2.8	0.5	-0.1	-0.9	-0.7	-0.7	-0.4	1.1	-0.2	1.2	0.7

Further things to discuss:

- significance of measurement
- need for large statistics for Higgs hunt
- compare to ATLAS measurement
→ animations:
<https://twiki.cern.ch/twiki/pub/AtlasPublic/HiggsPublicResults/WW-FixedScale.gif>

number of bins [1 ... 20]

standardization 1 2 3

Higgs contribution

maximum of y axis

cut on bin number

Submit **Default**

backup

Composition of the datasets

	Bkg	Wplus	Wminus	WW	Total	W+/W-
Dataset1	433	294	197	76	1000	1.492
Dataset2	415	305	197	83	1000	1.548
Dataset3	414	306	198	82	1000	1.545
Dataset4	420	304	196	80	1000	1.551
Dataset5	420	293	198	89	1000	1.480
Dataset6	414	303	199	84	1000	1.523
Dataset7	412	298	207	83	1000	1.440
Dataset8	418	315	187	80	1000	1.684
Dataset9	419	293	210	78	1000	1.395
Dataset10	421	292	201	86	1000	1.453
Dataset11	401	296	214	89	1000	1.383
Dataset12	413	301	196	90	1000	1.536
Sum Events	5000	3600	2400	1000	12000	

Compostion of the datasets

