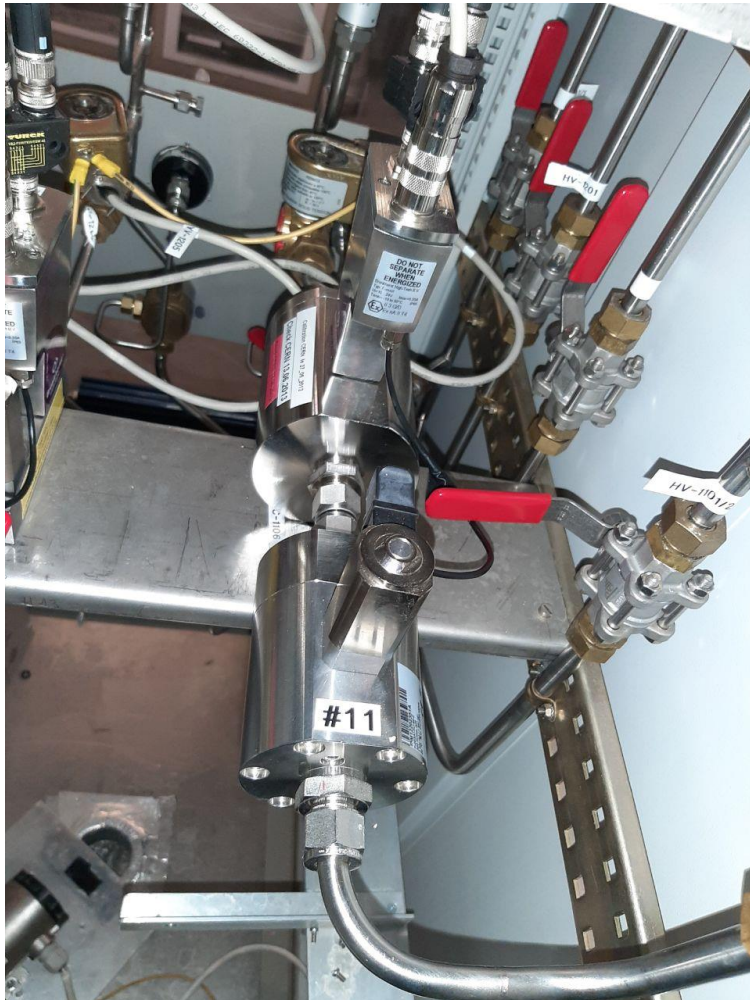




CMS-RPC LEAKS RESEARCH RESULT

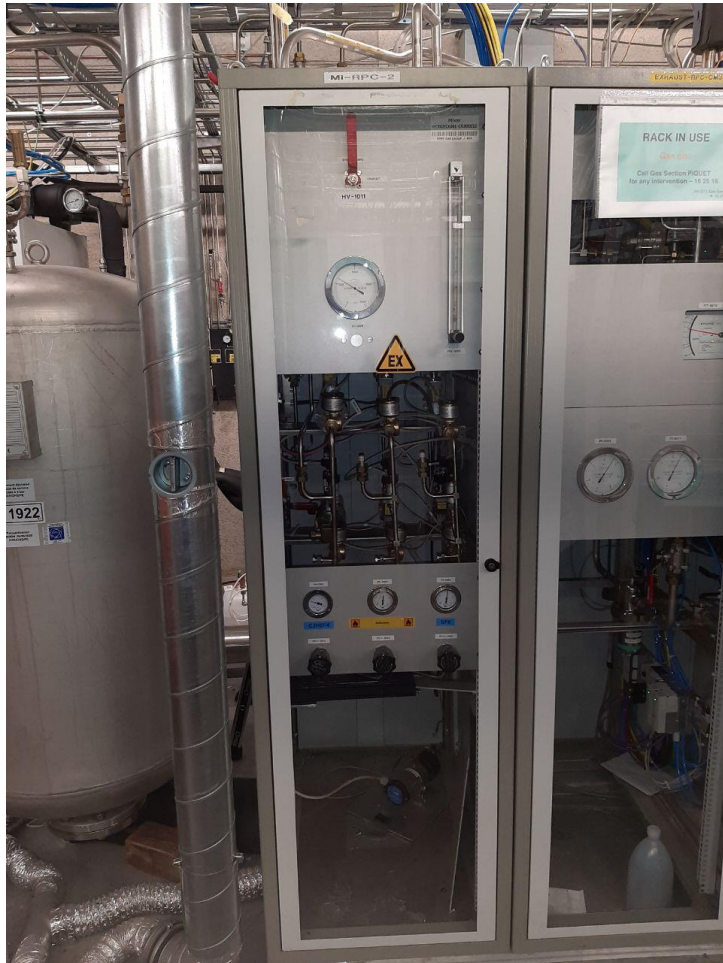


REPAIRED LEAK

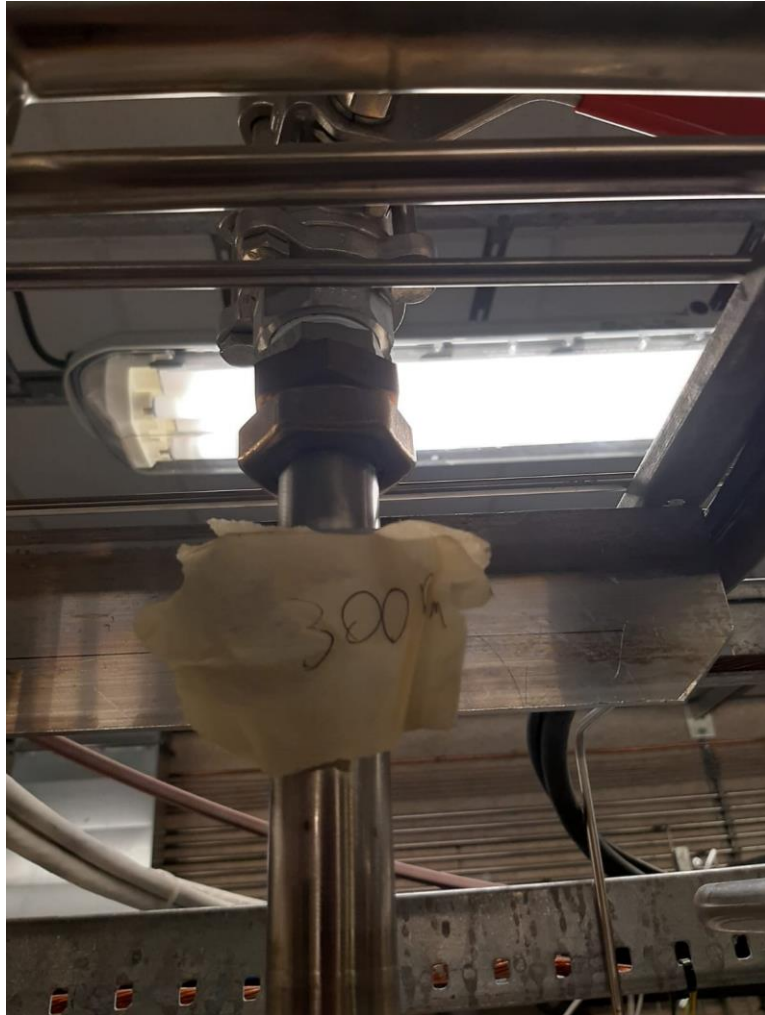


- Closed leak on the R134a MFC in the RPC mixer

SG LEAK

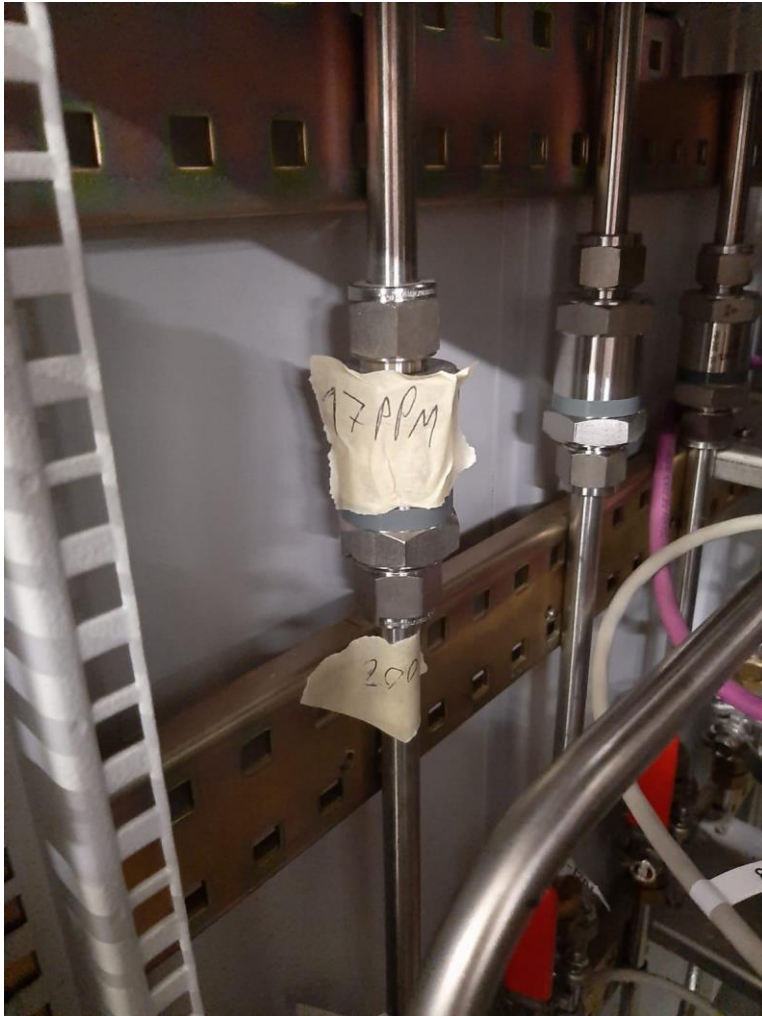


PURIFIER LEAKS



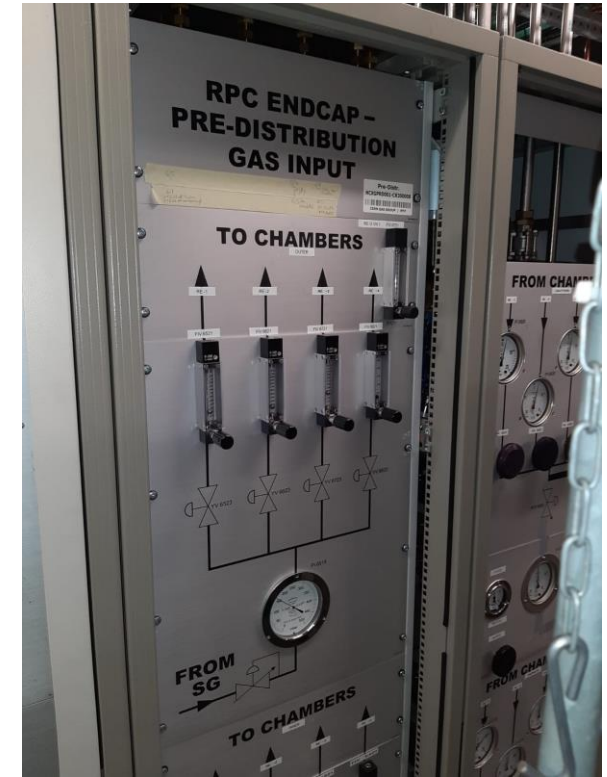
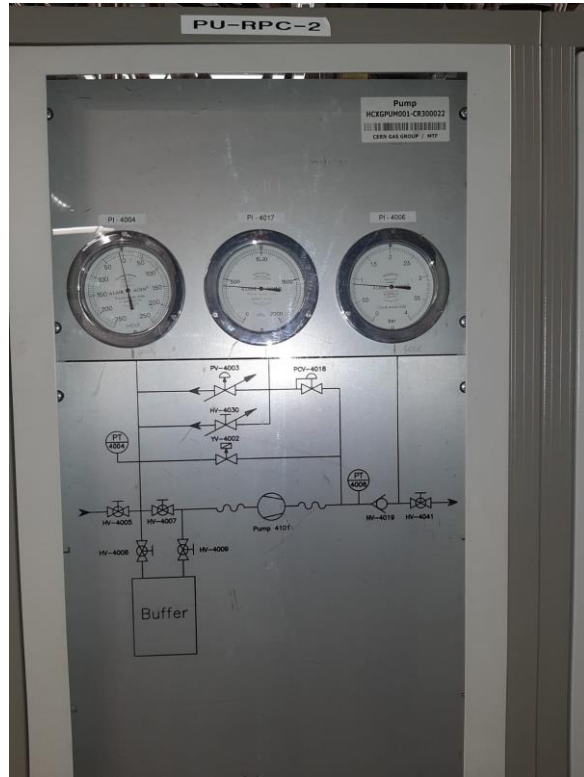
Leak on the valve above the RPC Purifier 3 rack in the SG is about 300ppm

MIXER LEAK



Leak on the no-return valve in the RPC mixer
the leak on the upper connector has been
closed and the leak on bottom connector is
400 ppm

US LEAKS



PUMP RACK LEAKS



A leak has been found on the head of the Von Rhor Valve inside the pump Rack but is not present anymore

RPC ENDCAP + PRE-DISTRIBUTION GAS INPUT



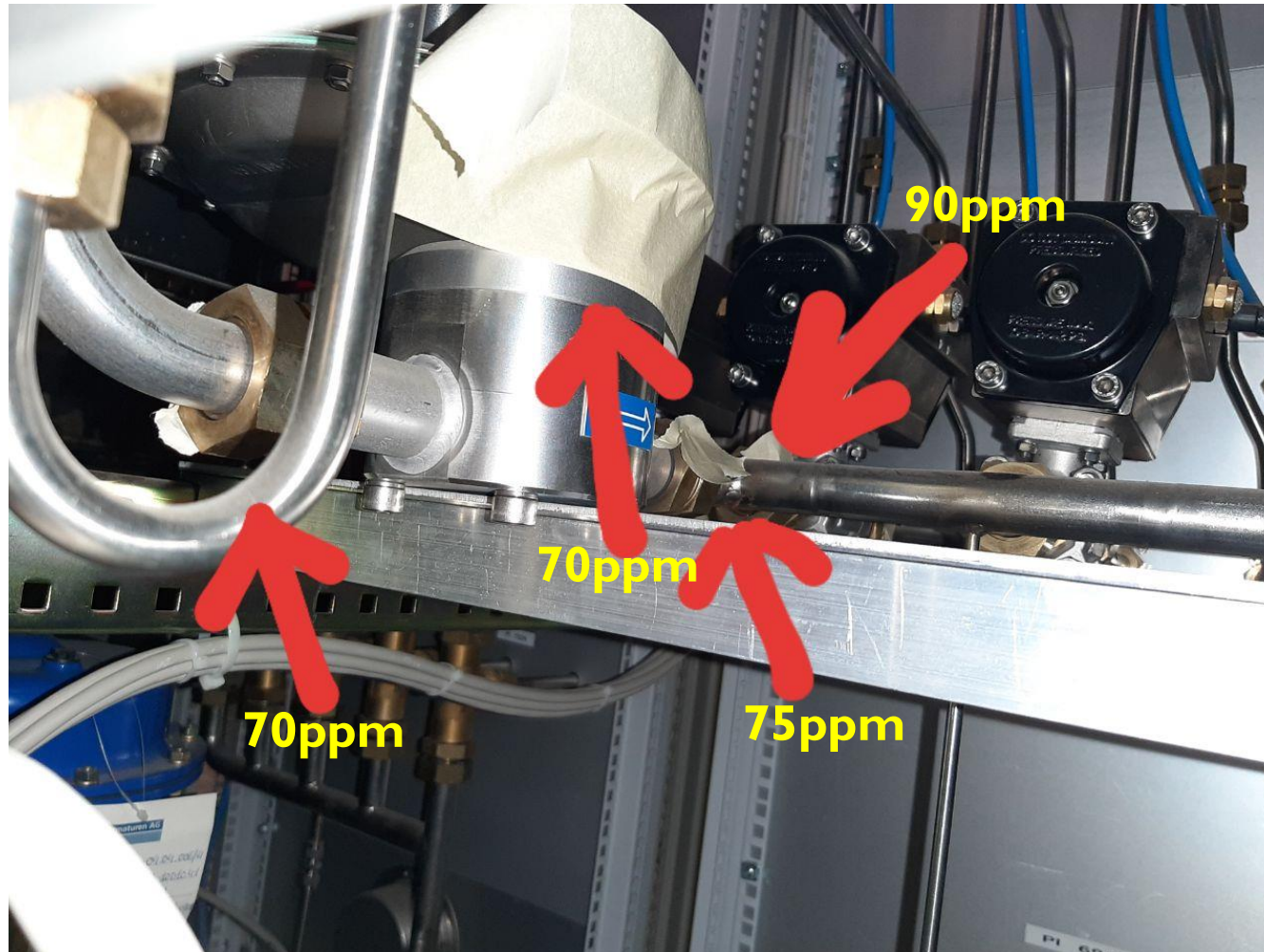
A leak on the connector of the PI 8319 is
40 ppm

RPC ENDCAP + PRE-DISTRIBUTION GAS INPUT



A leak on the connector of the HV 8331 is
49 ppm

RPC BARREL PRE-DISTRIBUTION GAS INPUT



RPC ENDCAP - PRE-DISTRIBUTION GS INPUT



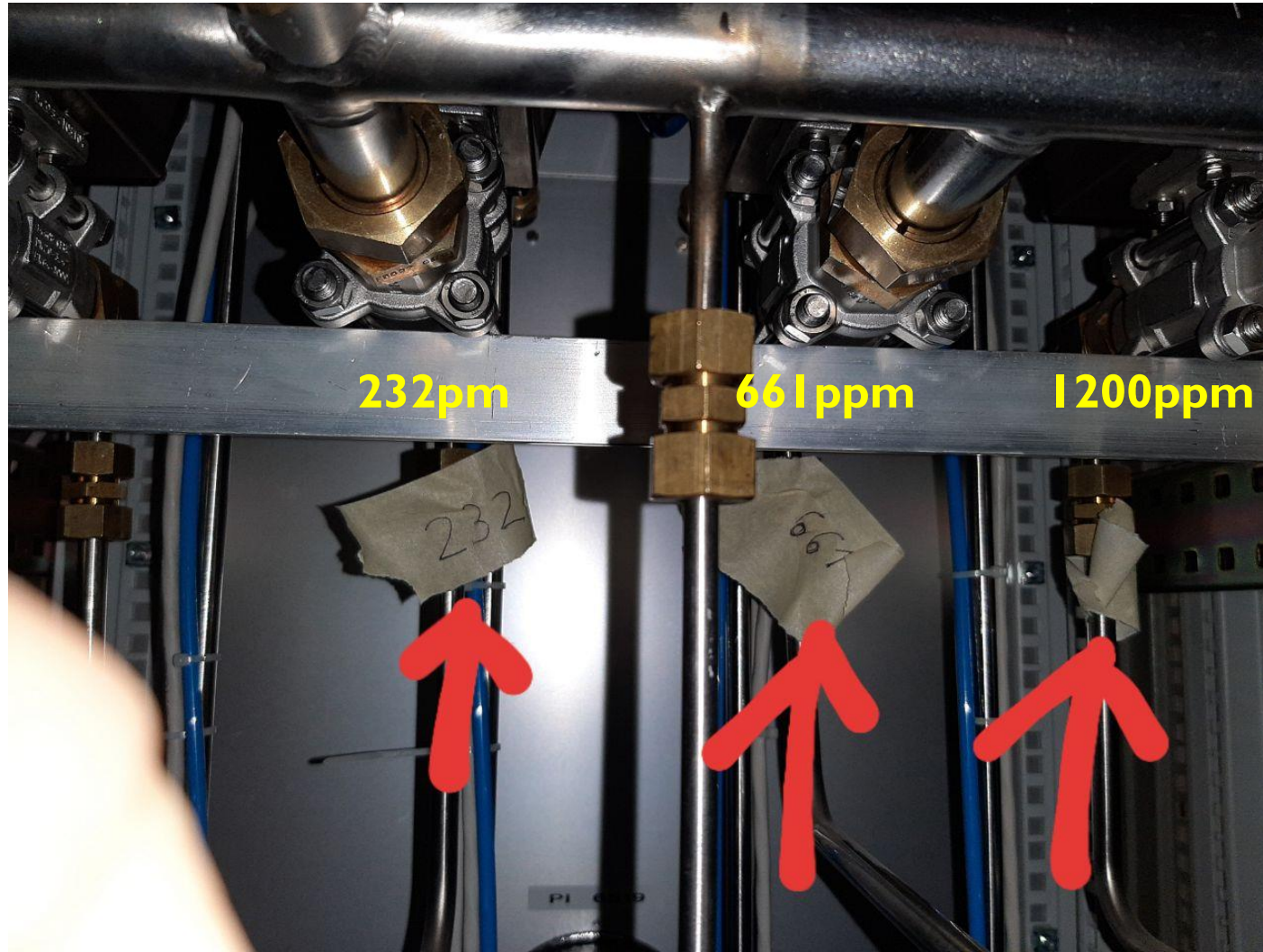
Leak on the PT - 6122 is over the scale of the instrument (> 9999 ppm)

RPC ENDCAP - PRE-DISTRIBUTION GS INPUT

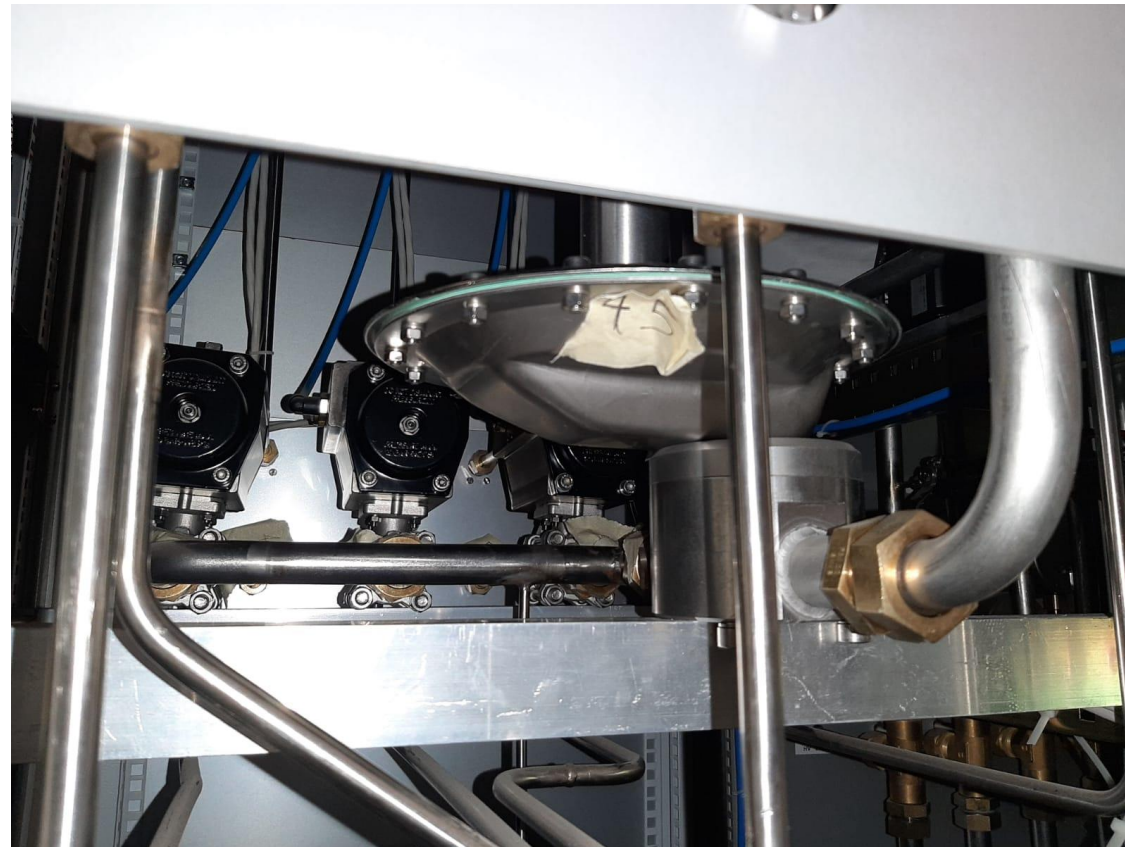


Leak on all the pneumatic valve's connectors directed to the front panel, from left to right the leaks are 102 ppm, 910 ppm, 1393ppm, 910 ppm.

RPC ENDCAP - PRE-DISTRIBUTION GS INPUT

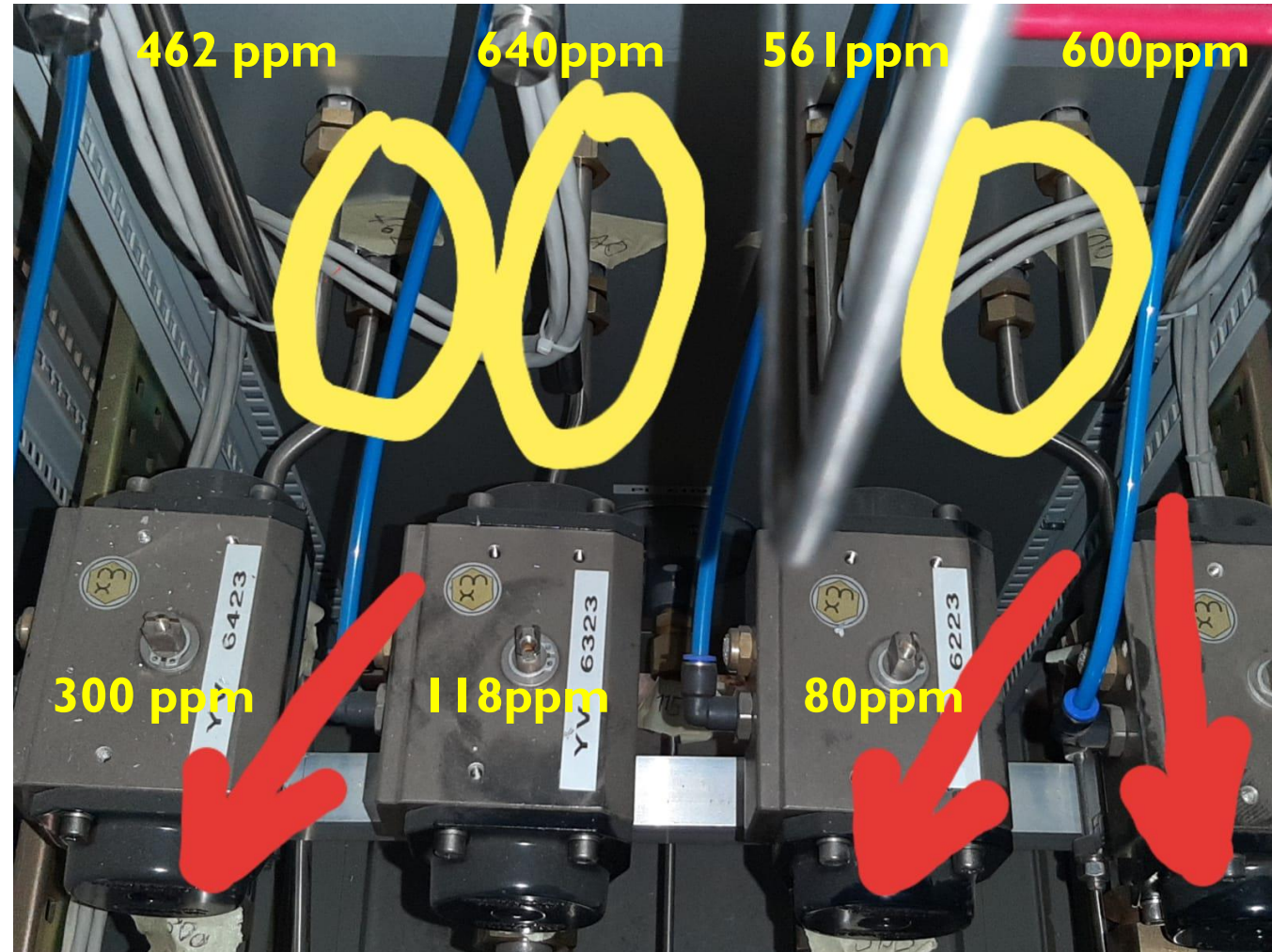


RPC ENDCAP - PRE-DISTRIBUTION GS INPUT

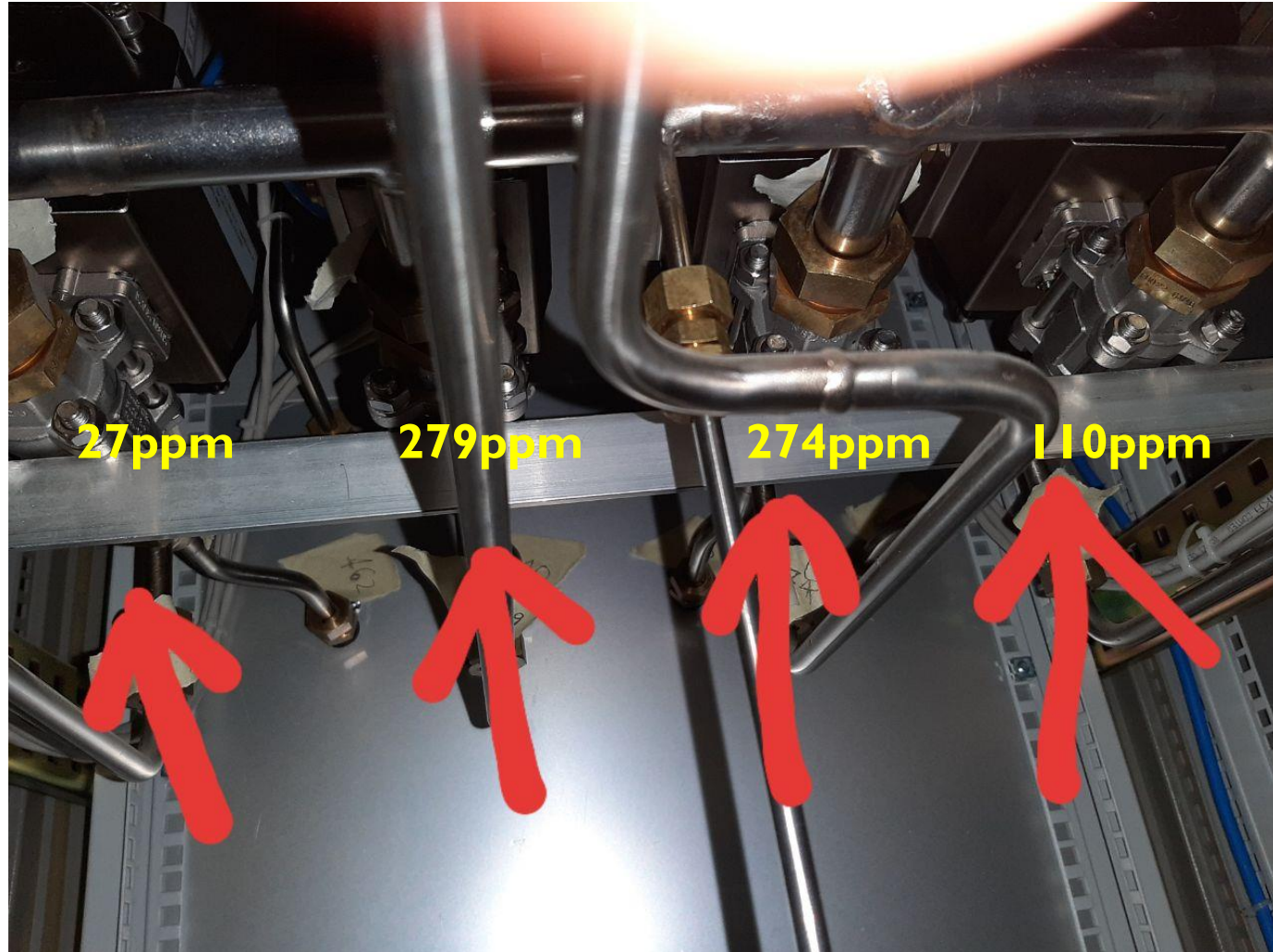


Leak on the head of the Zimmerli in the lower side of the rack is about 45 ppm

RPC ENDCAP - PRE-DISTRIBUTION GS INPUT



RPC ENDCAP - PRE-DISTRIBUTION GS IMPUT



RPC ENDCAP + PRE-DISTRIBUTION GS IMPUT



- Leak on the PI 6119 is 115 ppm

UX RACK 66 LEAKS



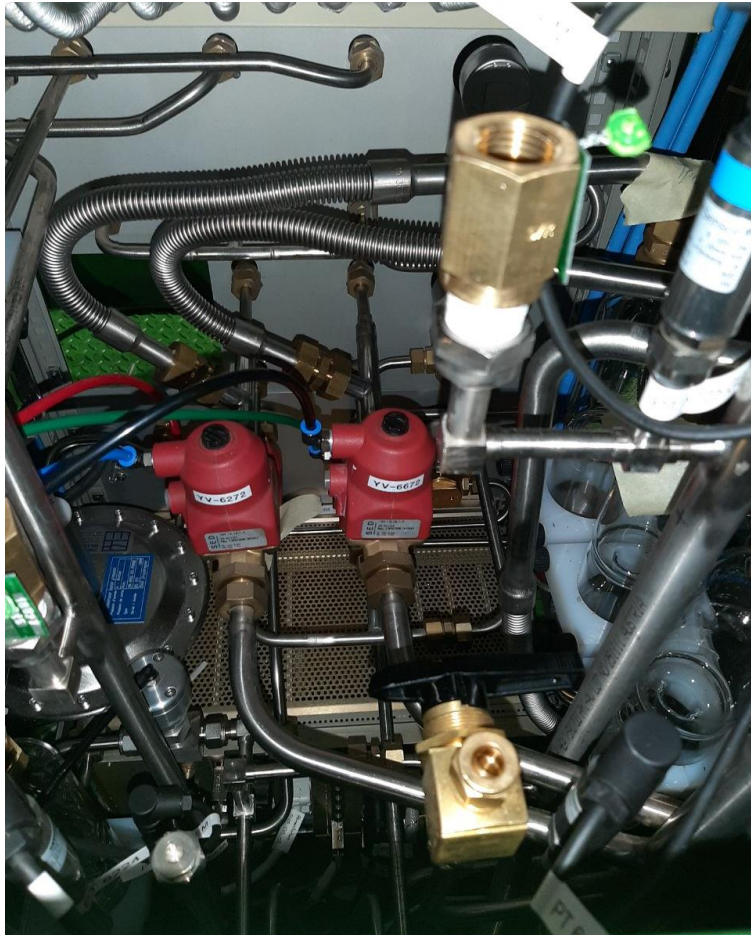
- Leak through the valve YV6672 is 2500ppm

UX RACK 62 LEAKS



- Leak on the valve YV 6271 is 200ppm

UX RACK 62 LEAKS



- Leak on the valve YV 6272 is 150ppm and on the YV 6271 is 180ppm

UX RACK 65 LEAKS



- Leak on the valve HV 6546 is 1000ppm

UX RACK 65 LEAKS



- Leak on the PT 6524 is 40 ppm

UX RACK 65 LEAKS



- Leak on the PT 6524 is 30 ppm

UX RACK 69 LEAKS



- Leak on the safety bubbler 6974 is 400 ppm

UX BUBBLER LEAKS

- Leaks on the bubbler 7574, 7074, 7043, 7543 are all 200ppm
- Undefined location of a leak in rack 79