



# The 1<sup>st</sup> Facilities Operations Meeting in 2020

Rende Steerenberg, BE-OP



# Mandate

**Chairperson:** Rende STEERENBERG

**Deputy Chairperson:** Klaus HANKE

**Scientific Secretary:** Lajos Bojtár

## **SCOPE**

The FOM is responsible for coordinating the operation of the non-LHC accelerator complex and associated experimental areas, this includes machine and facility projects under commissioning.

## **MANDATE**

Responsibilities for coordinating the operation include:

- Establish and maintain short-term and long-term accelerator schedules;
- Planning and coordination of hardware commissioning, cold check-out, beam commissioning and all periods of beam operation, including special runs;
- Schedule interventions in the accelerators and experimental facilities during operational periods;
- Ensure with the machine coordinators the readiness of the approved MD beams;
- Follow-up and track regularly the performance of all operational beams, in order to ensure optimum performance and the best possible conditions for all users, through reports on Accelerator Fault Tracking (AFT), Key Performance Indicators (KPI) and performance dashboards;
- Ensure implementation of new developments to improve the performance of operational beams;
- Liaise with the technical coordination teams for the preparation of technical stops and the restart afterwards.

## **REPORTING**

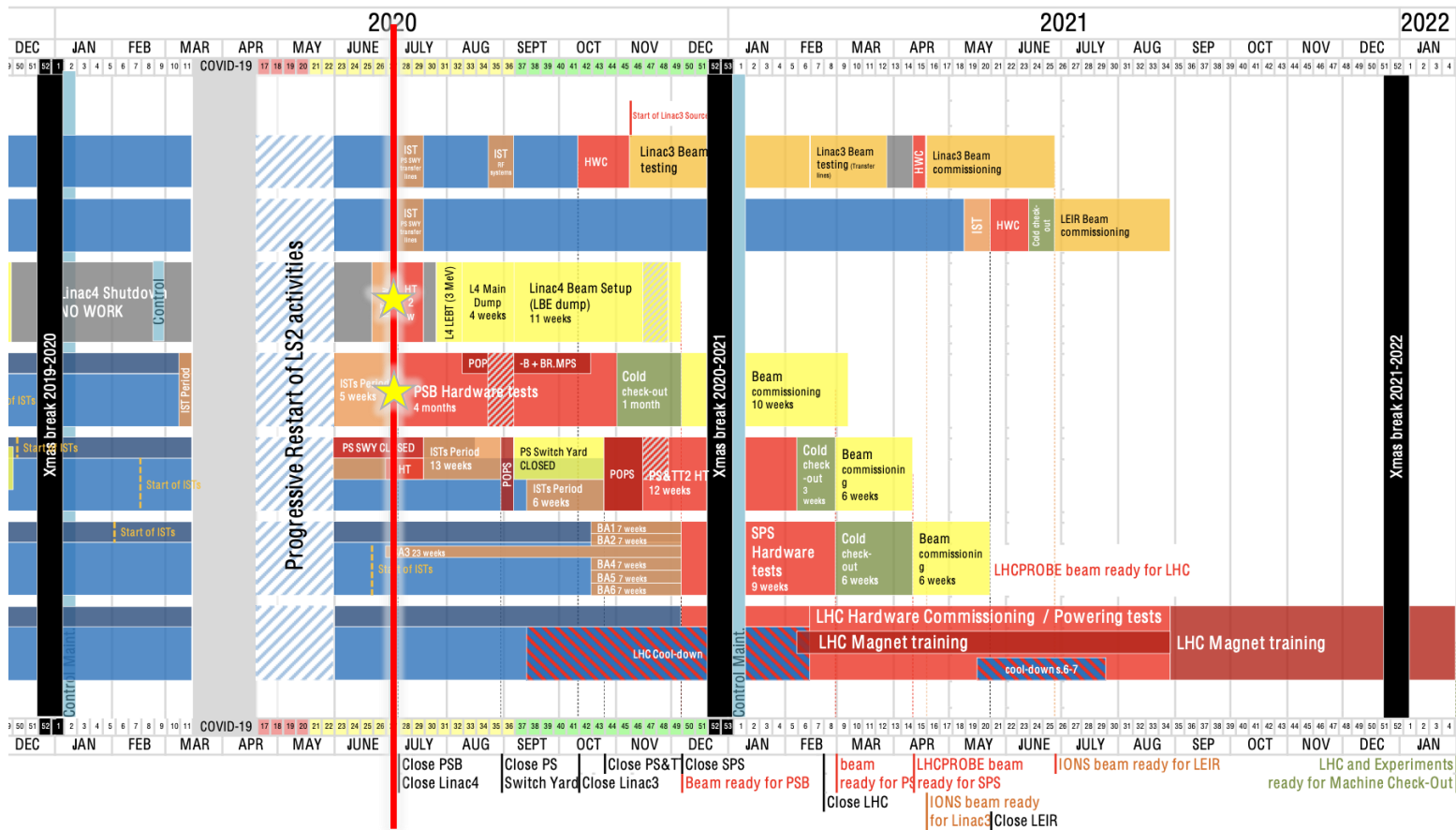
- Provide an executive summary to the IEFC with particular emphasis on major issues, which affect operation;
- Publish brief minutes, including actions and results on actions.

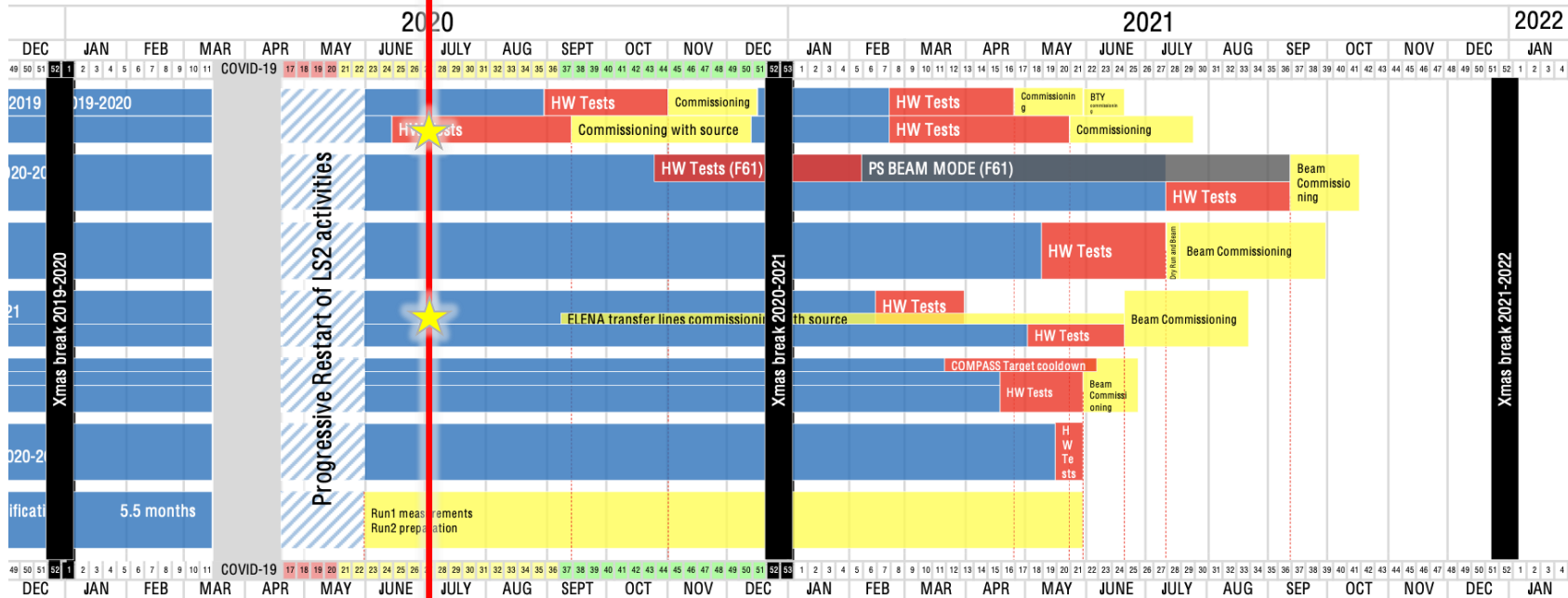
## **MEMBERSHIP**

Machine coordinators, representatives of equipment and service groups, physics coordinators, MD coordinator, LHC coordinator, DSO, RP representative(s). EATM representative, User representatives. (detailed list under FOM membership on indico page)

# Membership

- The FOM cannot function without the valuable input and participation of all the groups closely linked to the operation of accelerators and facilities.
- Please check the membership list on the FOM indico page and request us to update it when necessary
- <https://indico.cern.ch/category/6175/>
- Thanks in advance for your contributions





AWAKE  
 Run1 measurements  
 Run2 preparation

HIE-ISOLDE  
 ready for beam commissioning

ISOLDE low energy Exp. Area  
 ready for beam commissioning

HIE-ISOLDE  
 ready for beam commissioning


















AD/ELENA/AD-target  
 ready for beam commissioning

COMPASS / North Area / HiRadMat / AWAKE  
 ready for beam commissioning

East Area  
 ready for beam commissioning

n\_TOF  
 ready for beam commissioning  
 n\_TOF beam on target



<b>10:00</b>	→ 10:05 <b>Intro</b>	<b>Speaker:</b> Rende Steerenberg (CERN)	🕒 5m 
<b>10:05</b>	→ 10:15 <b>Machines / Facilities Status reports</b>		🕒 10m 
<b>10:15</b>	→ 10:25 <b>LINAC4 Hardware commissioning plans &amp; status</b>	<b>Speaker:</b> Bettina Mikulec (CERN)	🕒 10m 
<b>10:25</b>	→ 10:35 <b>PSB hardware commissioning plans &amp; status</b>	<b>Speaker:</b> Fabrice Chapuis (CERN)	🕒 10m 
	<div style="display: flex; gap: 10px;"> <div style="background-color: #f0f0f0; padding: 2px 5px;"> 20200630_Linac4_...</div> <div style="background-color: #f0f0f0; padding: 2px 5px;"> 20200630_Linac4_...</div> </div>		
<b>10:35</b>	→ 10:45 <b>ISOLDE hardware commissioning plans &amp; status</b>	<b>Speakers:</b> Jose Alberto Rodriguez (CERN), Miguel Luis Lozano Benito (CERN)	🕒 10m 
	<div style="display: flex; gap: 10px;"> <div style="background-color: #f0f0f0; padding: 2px 5px;"> ISOLDE_FOM_30_0...</div> <div style="background-color: #f0f0f0; padding: 2px 5px;"> ISOLDE_FOM_30_0...</div> </div>		
<b>10:45</b>	→ 10:55 <b>ELENA commissioning plans &amp; status</b>	<b>Speaker:</b> Laurette Ponce (CERN)	🕒 10m 
	<div style="display: flex; gap: 10px;"> <div style="background-color: #f0f0f0; padding: 2px 5px;"> ELENA-FOM-June2...</div> <div style="background-color: #f0f0f0; padding: 2px 5px;"> ELENA-FOM-June2...</div> </div>		
<b>10:55</b>	→ 11:10 <b>AOB</b>		
	<div style="background-color: #555; color: white; padding: 2px 5px; display: inline-block;"><b>10:55</b></div> <div style="padding-left: 10px;"> <b>Piquet &amp; Standby services during hardware commissioning</b>  <b>Speaker:</b> Rende Steerenberg (CERN) </div>		🕒 5m 
	<div style="background-color: #555; color: white; padding: 2px 5px; display: inline-block;"><b>11:00</b></div> <div style="padding-left: 10px;"> <b>EN-EL interventions</b>  <b>Speaker:</b> Eva Cano Gonzalez (CERN) </div>	<div style="display: flex; gap: 10px;"> <div style="background-color: #f0f0f0; padding: 2px 5px;"> IEFC_Presentation_...</div> <div style="background-color: #f0f0f0; padding: 2px 5px;"> IEFC_Presentation_...</div> </div>	🕒 10m 



[www.cern.ch](http://www.cern.ch)