



# The IP Section @ CERN KT

[stephanie.elfering@cern.ch](mailto:stephanie.elfering@cern.ch)

Legal Advisor

IPT Department



# The IPT-KT-IP Section



**Myriam Ayass**

Section Leader &  
Legal Advisor



**Audrey Ballantine**

Support Officer

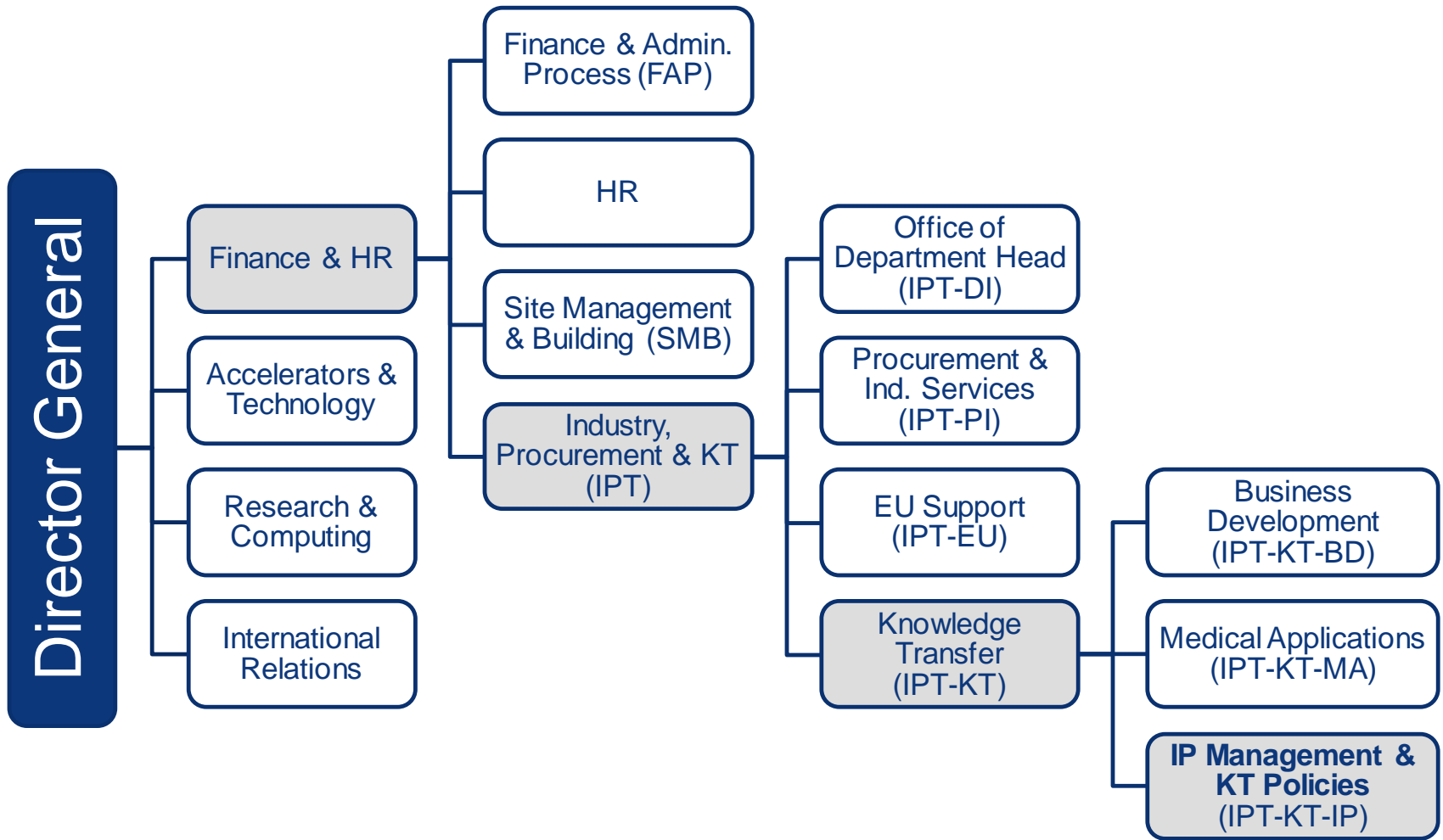


**Stephanie Elfering**

Legal Advisor



# The IPT-KT-IP Section



# What does the IP Section do?



Internal  
KT Policies



IP Management,  
Advice & Training

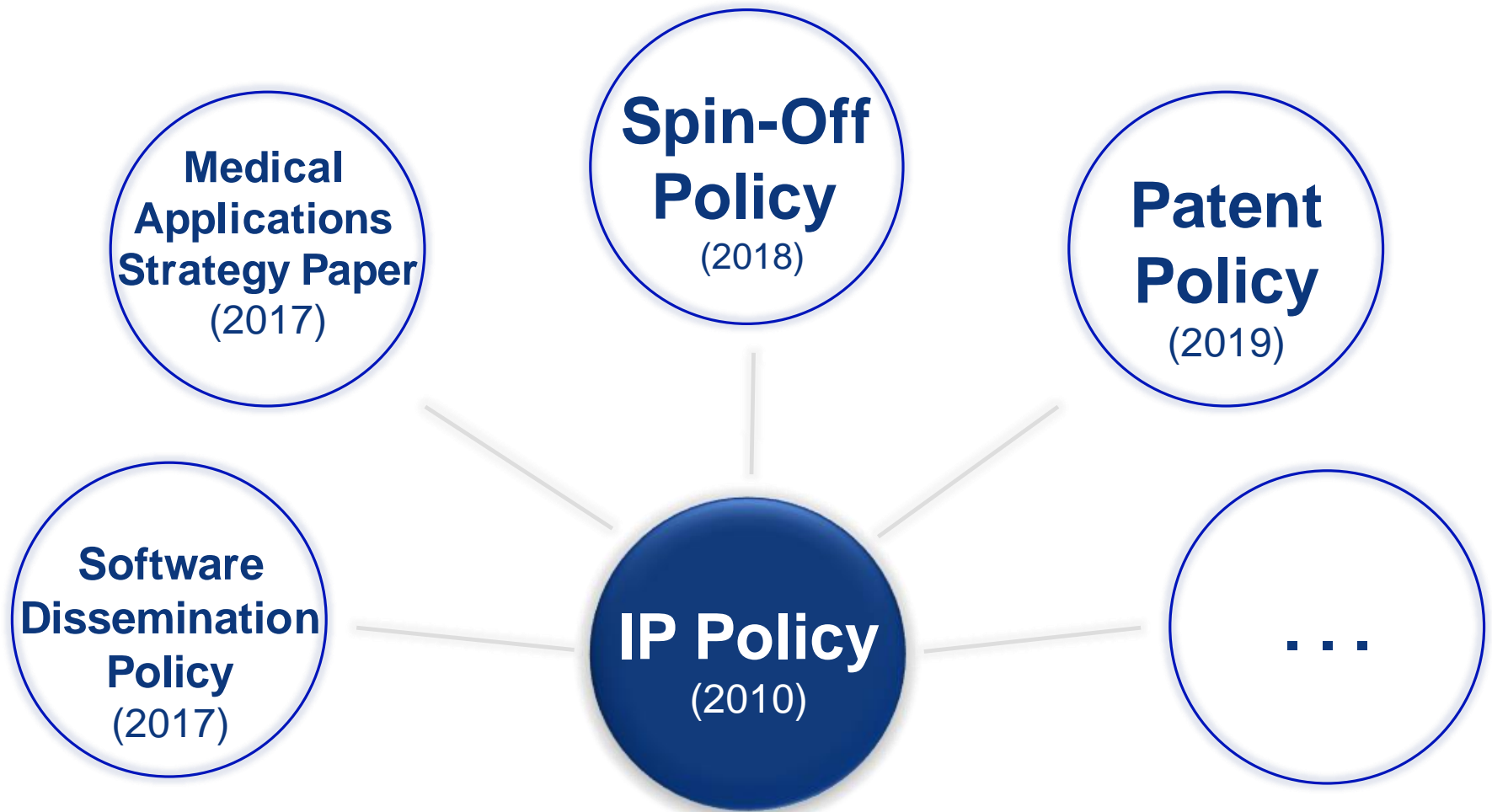


KT Contracts

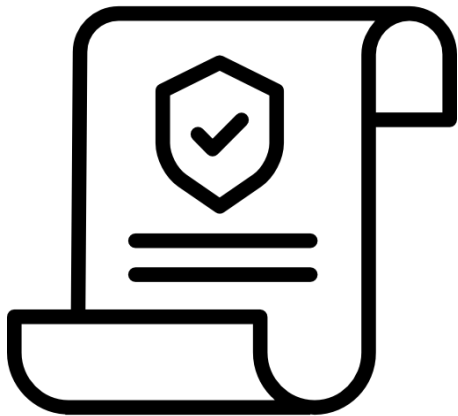


(other)  
Legal Advice

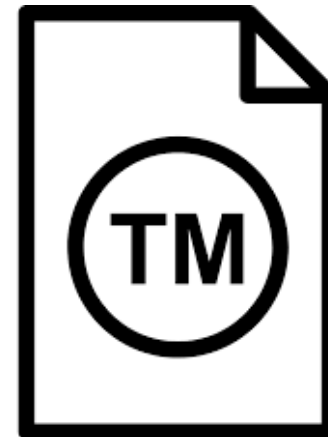
# KT Framework



# CERN's Registered IP



**17 Patent Families,  
accounting for 48 patents**



**13 Trademarks accounting  
for 21 registrations**

# CERN's Open Source IP



**23 Designs published  
under OHL**



**Uncountable – innumerous  
repositories in GitHub**

# Main Legal Instruments

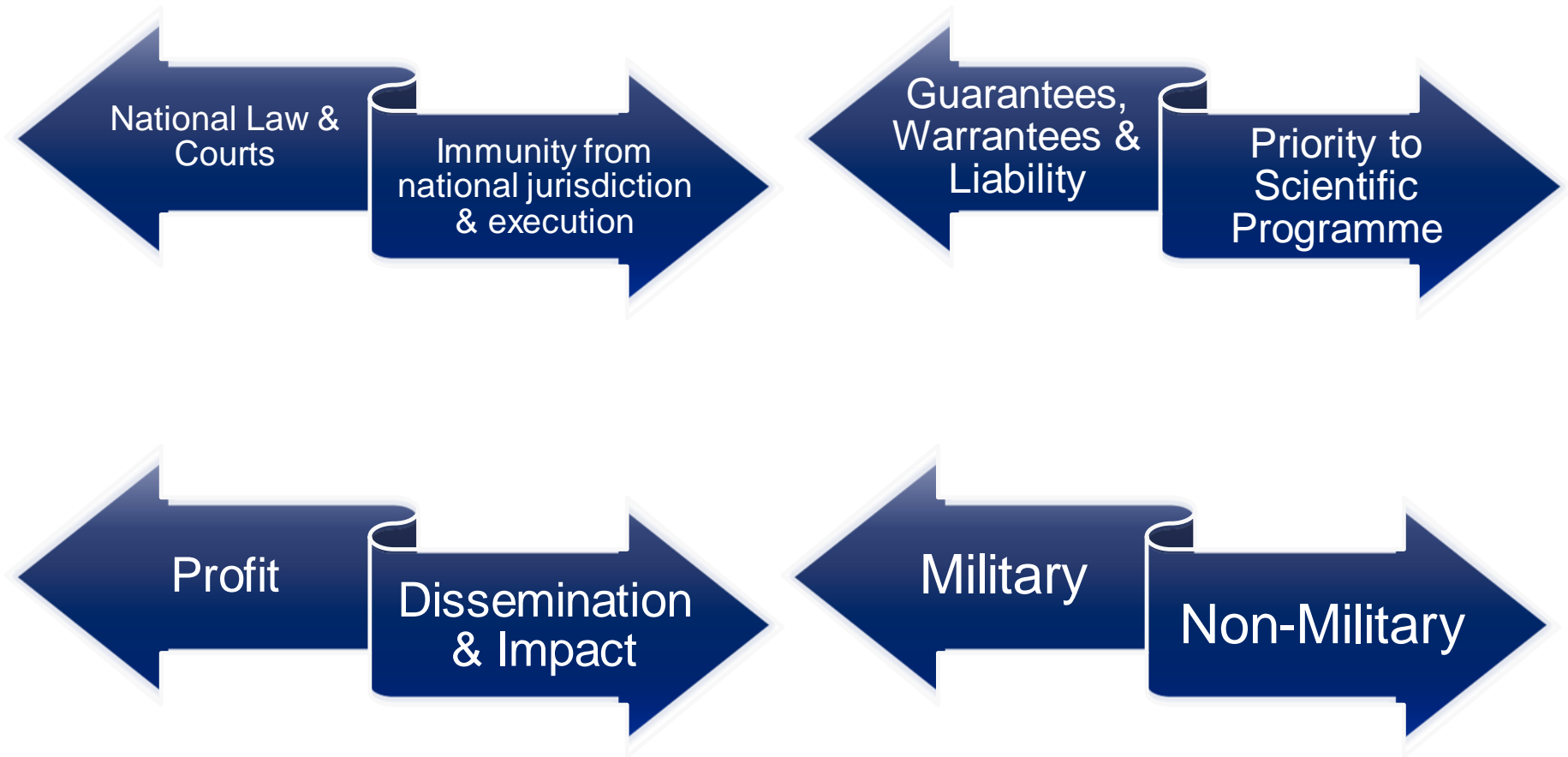




# KT Ecosystem



# CERN specific challenges



# Thanks!





<https://kt.cern>

