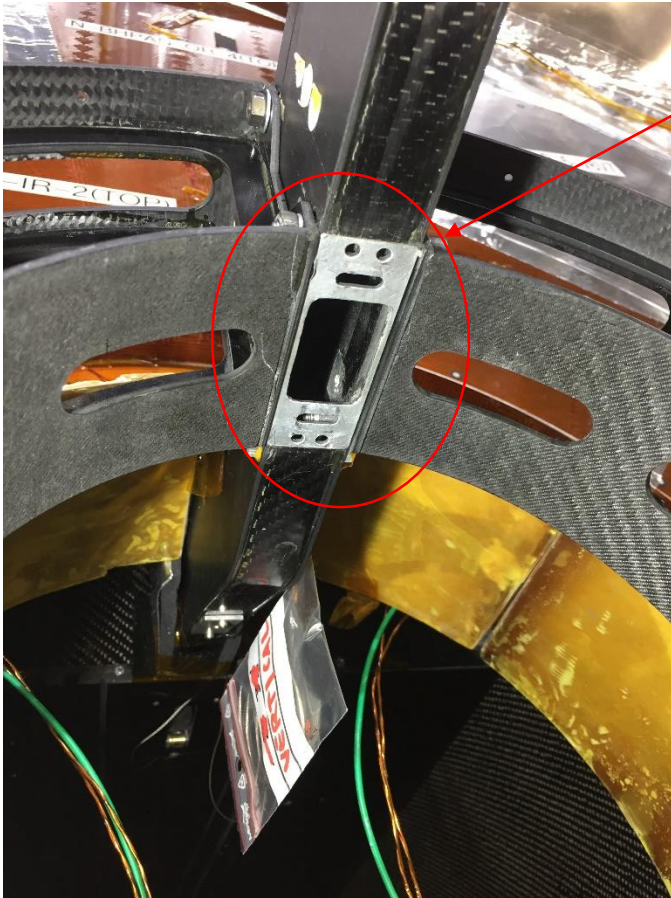


# Updated Phase 0/1 Fishingrod CAD model

Axel Filenius  
Nicola Bacchetta  
17/02/2020

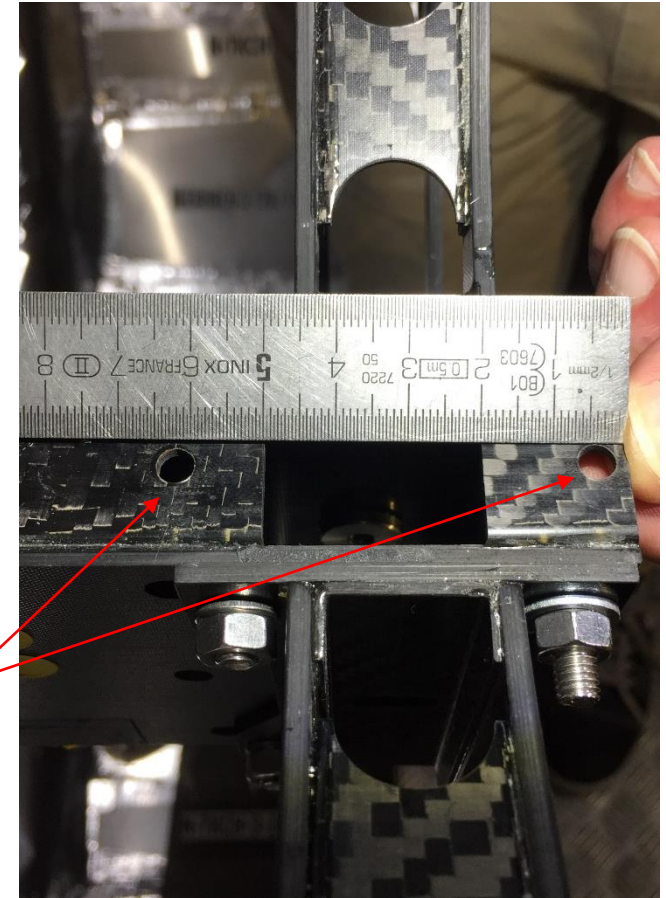
# Missing information from CAD

3.1m



Missing the  
plates and all  
small  
cutouts/holes

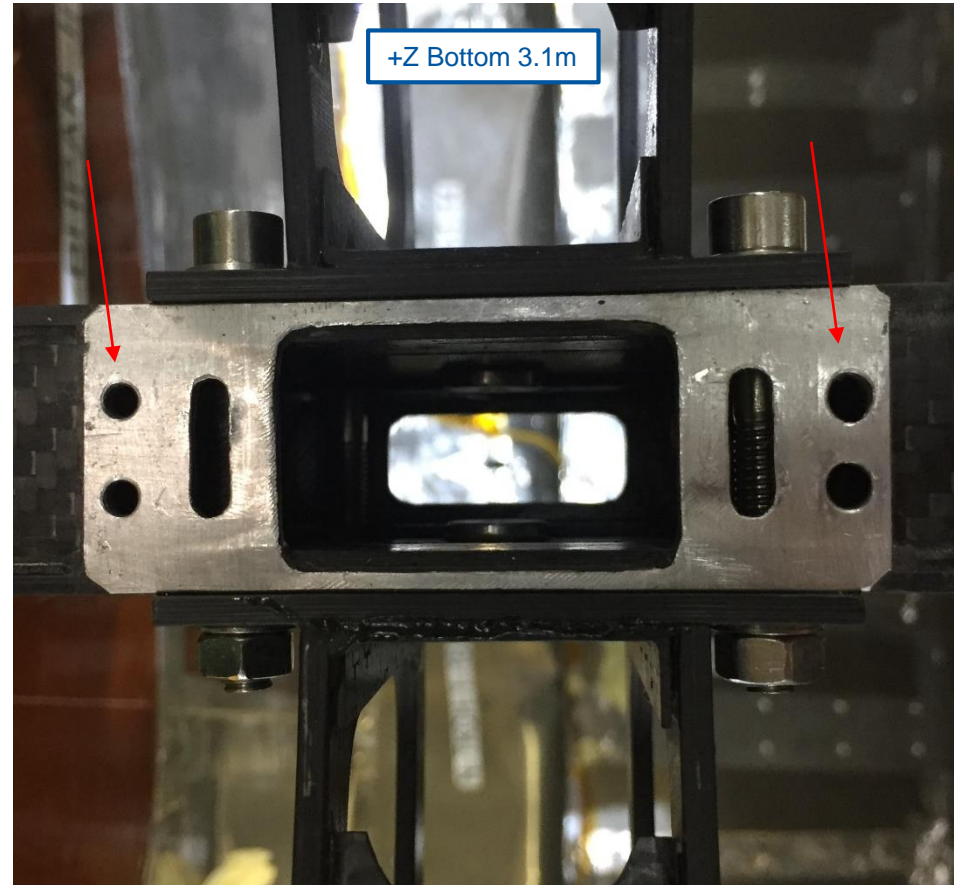
3.5m



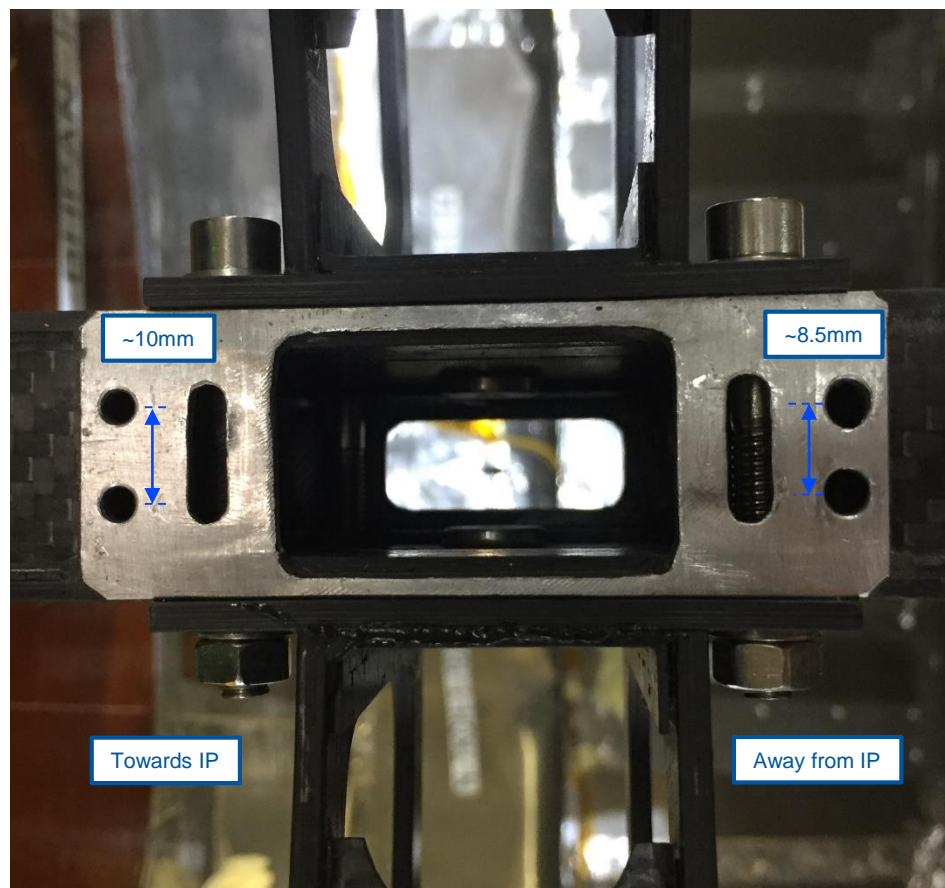
Missing the  
two holes  
indicated

# Non-accurate holes!

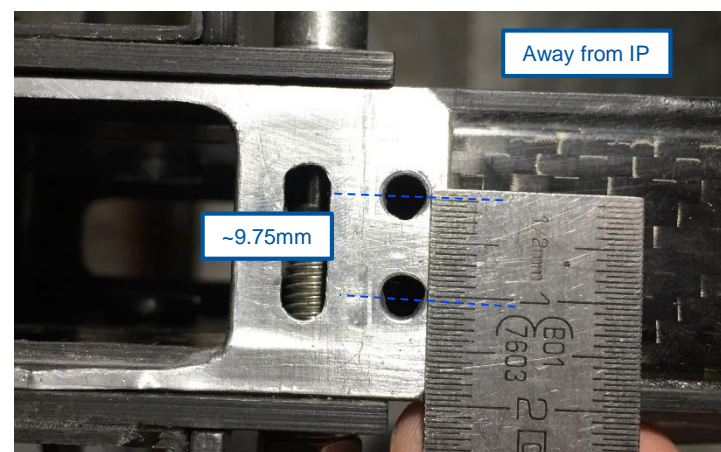
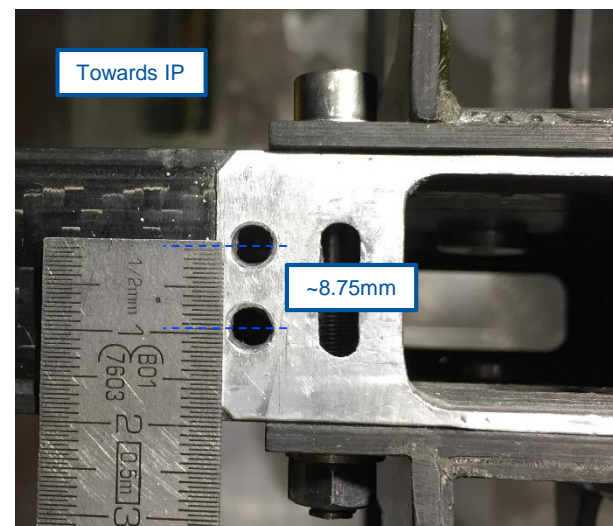
- On the plates at **3.1m**, the holes made on the pieces are **not matching** between **Top and Bottom** and **+Z/-Z Ends**
- The distance between the two holes seems to randomly vary between ~10mm to ~8mm



+Z Bottom 3.1m



-Z Bottom 3.1m



# ST1194494\_01

- Contains:
  - Updated existing Top and Bottom Fishingrods
  - New temporary 3.1m and 3.5m supports for Beampipe (M. Sinani)
  - New permanent 3.1m and 3.5m Beampipe support assemblies
  - New Beampipe
  - Other relevant existing mechanics

