

Tier 1 Status

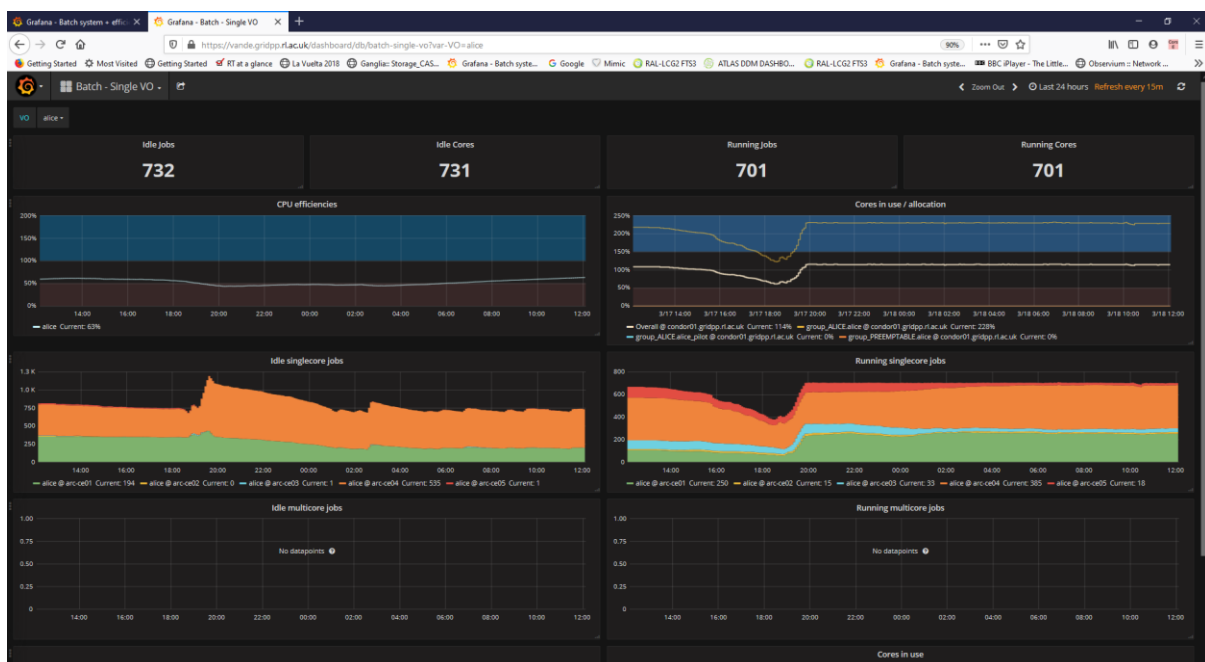
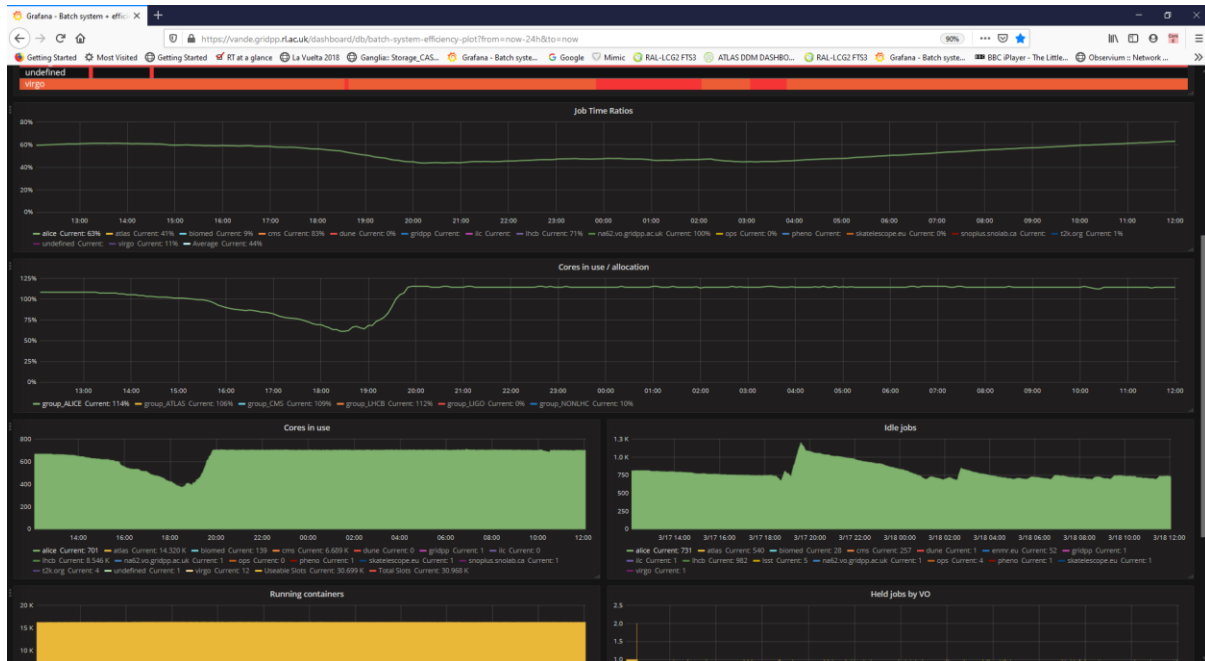
No new/major issues or incidents this week.

FTS transfer rates to RAL for ATLAS dominante dby source errors at a few sites.

Alice job rates improved after changing Gateway read ahead size on mem cache.

<https://lcgwww.gridpp.rl.ac.uk/wordpress/2020/03/12/thursday-12th-march-2020/>

ALICE over night:



show/save search result as CSV | XML

9 Tickets found

Ticket-ID	Type	VO	Site	Priority	Resp. Unit	Status	Last Update	Subject	Scope
145894		t2k.org	RAL-LCG2	very urgent	NGI_UK ▸ involved	in progress	2020-03-18	Files lost on RAL tape?	EGI
145679		none	RAL-LCG2	less urgent	NGI_UK	in progress	2020-02-21	Enable SRR for RAL	EGI
145584		none	RAL-LCG2	urgent	NGI_UK ▸ involved	in progress	2020-02-24	Request to upgrade squid	EGI
145574		other	RAL-LCG2	urgent	NGI_UK	in progress	2020-03-18	LSST jobs failing at RAL	EGI
145510	Team	atlas	RAL-LCG2	urgent	NGI_UK ▸ involved	in progress	2020-03-05	RAL-LCG2: timeouts on stage-in/outs	WLCG
144431		cms	RAL-LCG2	urgent	NGI_UK ▸ involved	in progress	2020-03-09	Transfers failing to RAL_Disk	WLCG
143889		snoplus.snolab.ca	RAL-LCG2	urgent	NGI_UK	on hold	2019-11-18	SNO+ LFC to DFC migration	EGI
143323	Team	lhcb	RAL-LCG2	top priority	NGI_UK	on hold	2020-02-04	File deletion at RAL ECHO	WLCG
142350	Team	lhcb	RAL-LCG2	top priority	NGI_UK	on hold	2020-02-18	Proble accessing some LHCb files at RAL	WLCG

Tot pages: 1
[1]

No GGUs tickets closed this week.

