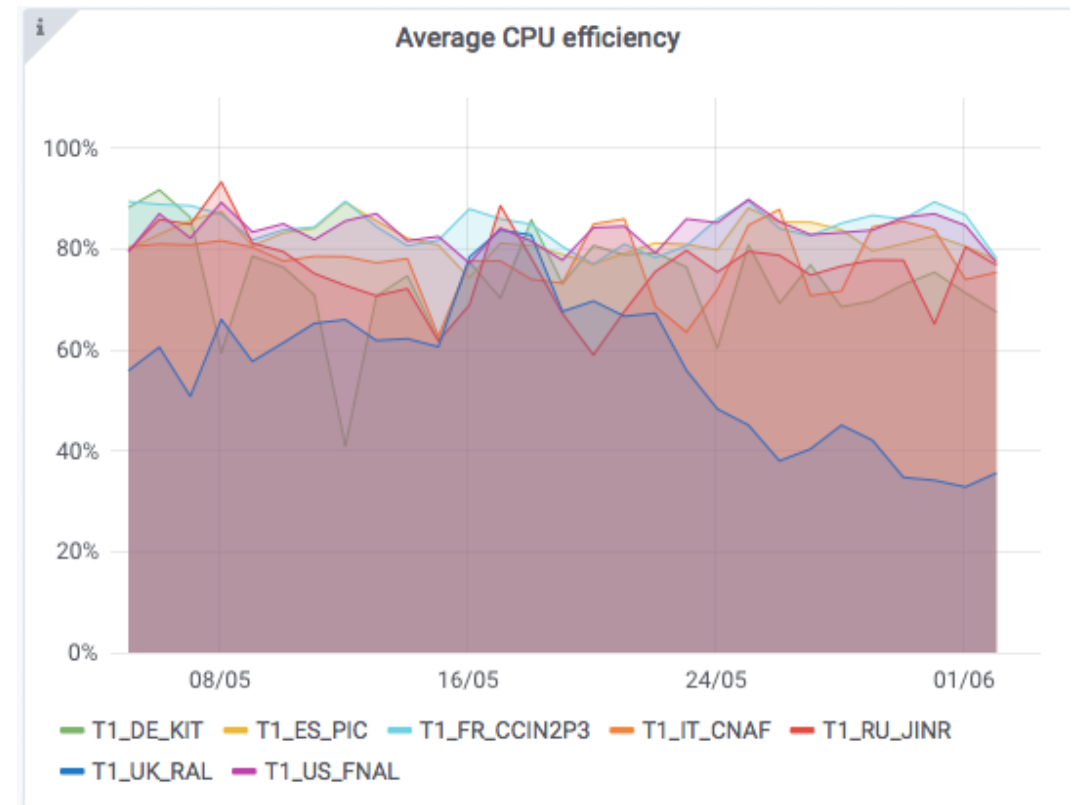
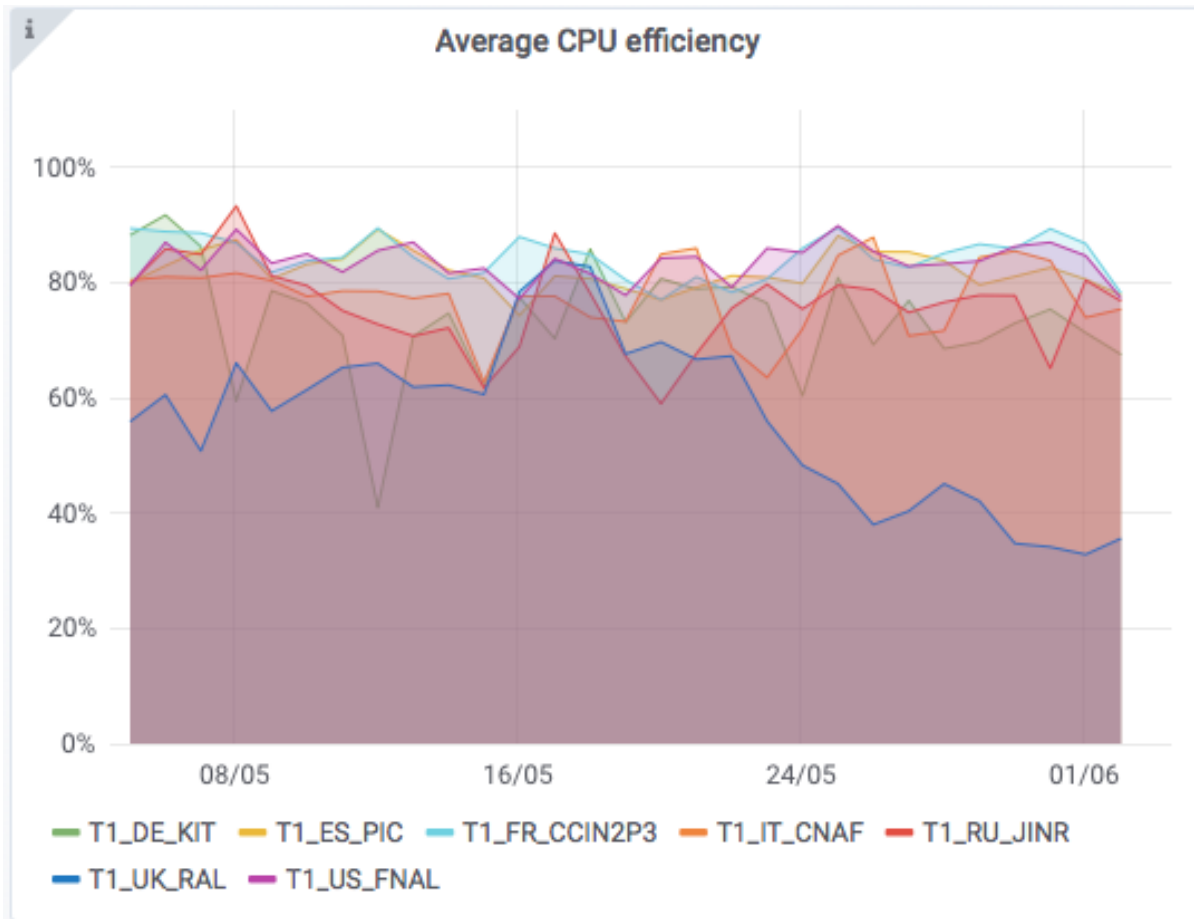


# CMS Job Efficiency at RAL T1

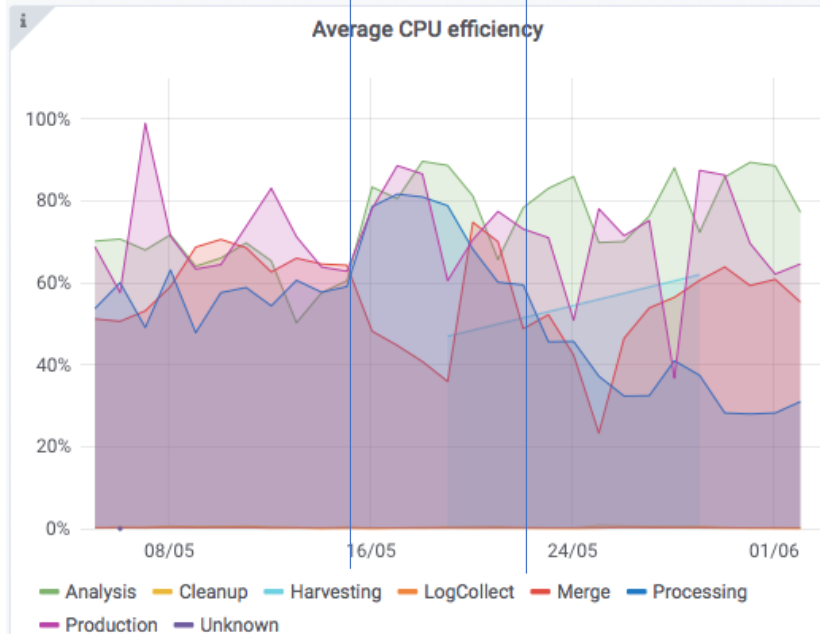
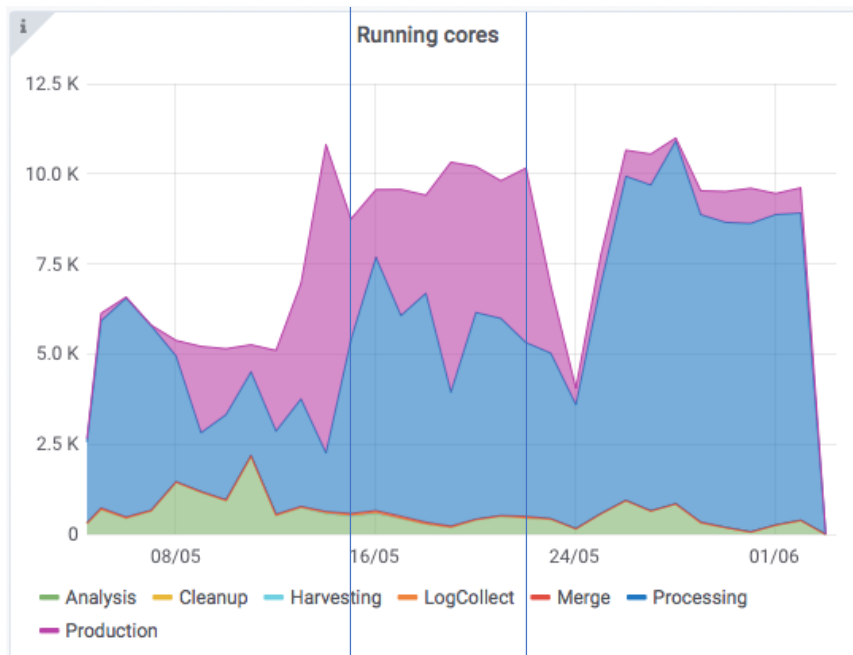
03/06/20 Katy Ellis

Long-term efficiency differences

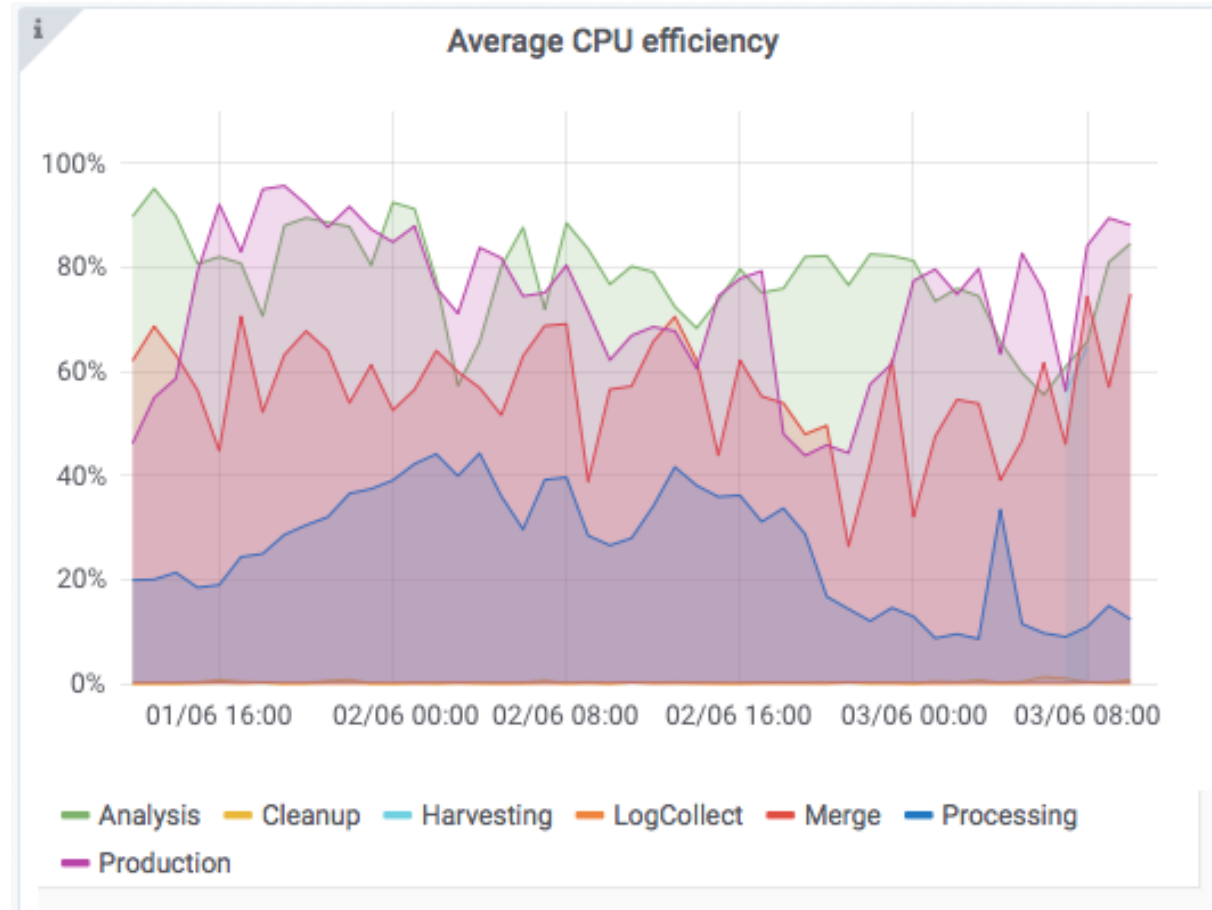
# The last month



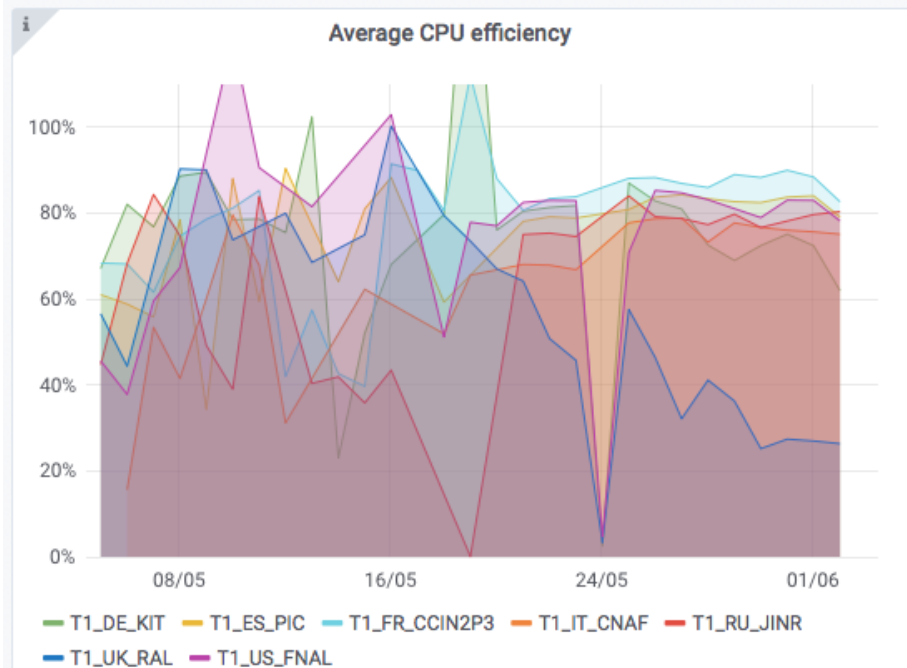
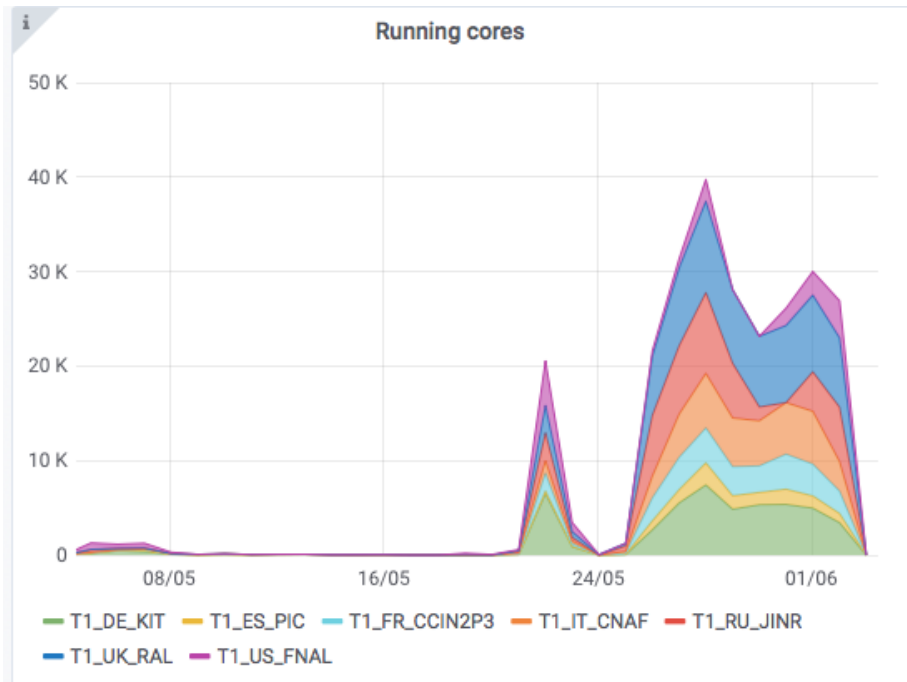
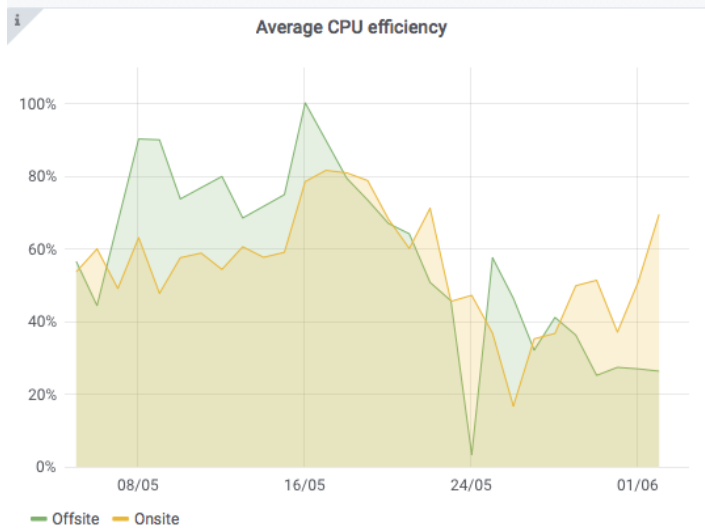
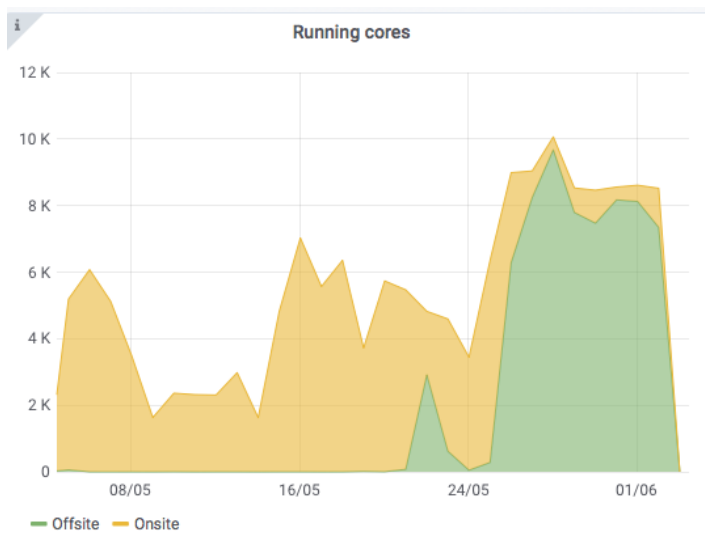
# The last month



# Last 2 days...



# Onsite/Offsite reads



# Why are Offsite reads less efficient at RAL?

- Are RAL WNs on the OPN?
  - No, not yet, but this is planned as we move towards LHCOne
- Firewall Bypass?
  - Also no, but some outbound traffic /may/ go by this route.
- Long term goal is to make all the routing consistent for Tier-1 services, i.e. all on OPN and Bypass and LHCOne in a single larger subnet.