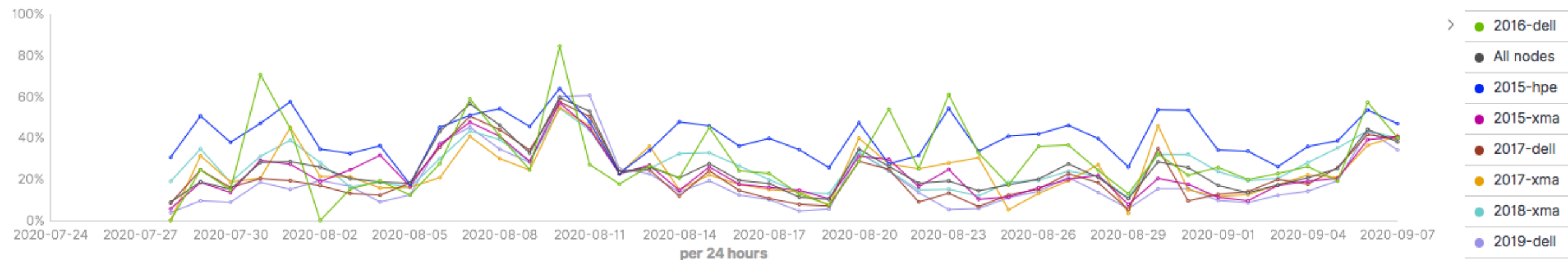


# CMS jobs by tranche

Katy Ellis, 09/09/20

# CMS job failures (excluding 'cms-only' nodes)



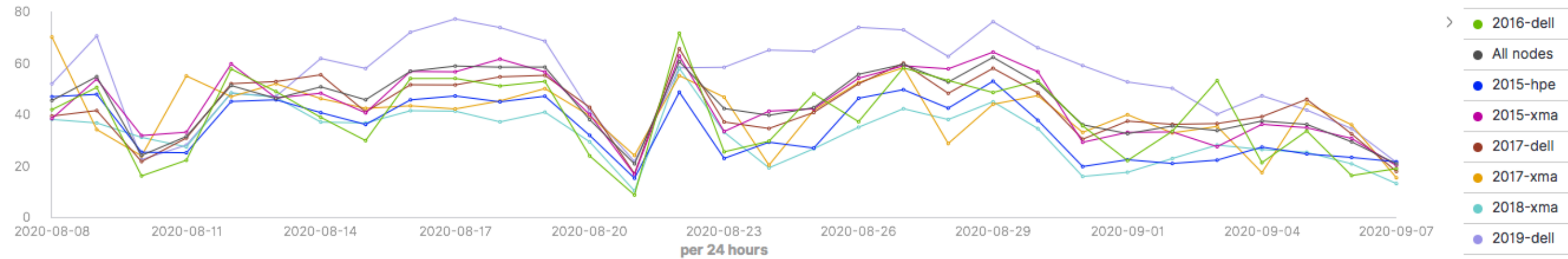
- Last 45 days with 1-day binning
- Checked the 2016-dells (green) first, as that was the one mentioned specifically by James W.
- For CMS jobs, it looks like 2015-hpe (blue) tranche is probably worse.

# A selection of 2015-hpe job failures



- Individual worker nodes
- Last 45 days, but 20 day binning to make better statistics
- Blue line in the middle is whole tranche (appears quite stable at this resolution)
- Looking at individual nodes, they seem to be very variable

# CMS job efficiency by tranche



- Again, excluding cms-only nodes
- Last 45 days with 1-day binning
- 2019-dells clearly doing best by some margin ✓
- Current poor performance (due to offsite reads?) apparent on all nodes, even the newest