

## Issues/Successes this week:

Arc-ce accounting and issue with arc-ce cip being worked on.

Problems accessing ATLAS hammercloud pages

## Open Tickets:

Ticket-ID	Type	VO	Site	Priority	Responsible Unit	Status	Last Update	Subject	Scope
148867	ALARM	none	RAL-LCG2	top priority	NGI_UK	assigned	2020-09-30 10:00:00	This TEST ALARM has been raised for testing GGUS alarm work flow after a new GGUS release.	WLCG
148834	USER	cms	RAL-LCG2	urgent	NGI_UK	in progress	2020-09-30 10:58:00	Log-in issue causing transfer failures from UK_RAL_Disk to several nodes	WLCG
148799	TEAM	lhcb	RAL-LCG2	very urgent	NGI_UK	in progress	2020-09-28 18:36:00	arcinfo arc-ce03.gridpp.rl.ac.uk is unavailable at RAL-LCG2	WLCG
148701	TEAM	lhcb	RAL-LCG2	very urgent	NGI_UK	in progress	2020-09-24 07:44:00	Auth failed for one user	WLCG
148374	USER	cms	RAL-LCG2	urgent	NGI_UK	in progress	2020-09-10 22:53:00	Files access is timing out at T1_UK_RAL	WLCG
148153	USER	snoplus.snolab.ca	RAL-LCG2	less urgent	NGI_UK	waiting for reply	2020-09-30 11:30:00	Transfer instability to RAL	EGI
147622	USER	snoplus.snolab.ca	RAL-LCG2	urgent	NGI_UK	in progress	2020-09-09 10:34:00	Bulk transfer of data from RAL to Canadian site	EGI
146651	TEAM	atlas	RAL-LCG2	urgent	NGI_UK	on hold	2020-08-10 10:59:00	singularity and user NS setup at RAL	WLCG
143669	USER	snoplus.snolab.ca	RAL-LCG2	urgent	NGI_UK	on hold	2020-04-27 08:45:00	SNO+ LFC to DFC migration	EGI
143624	USER	snoplus.snolab.ca	RAL-LCG2	less urgent	NGI_UK	on hold	2020-05-18 12:35:00	Master tracking ticket to track snoplus.snolab.ca LFC to DFC transition	EGI
142350	TEAM	lhcb	RAL-LCG2	top priority	NGI_UK	on hold	2020-08-26 12:40:00	Proble accessing some LHCB files at RAL	WLCG

## Closed tickets:

Ticket-ID	Type	VO	Site	Priority	Responsible Unit	Status	Last Update	Subject	Scope
148793	TEAM	atlas	RAL-LCG2	less urgent	NGI_UK	solved	2020-09-29 10:25:00	UK RAL jobs failing due to the mostly Athena crash	WLCG

## CMS:

[https://test-cmsst.web.cern.ch/sitereadiness/report.html#T1\\_UK\\_RAL](https://test-cmsst.web.cern.ch/sitereadiness/report.html#T1_UK_RAL)

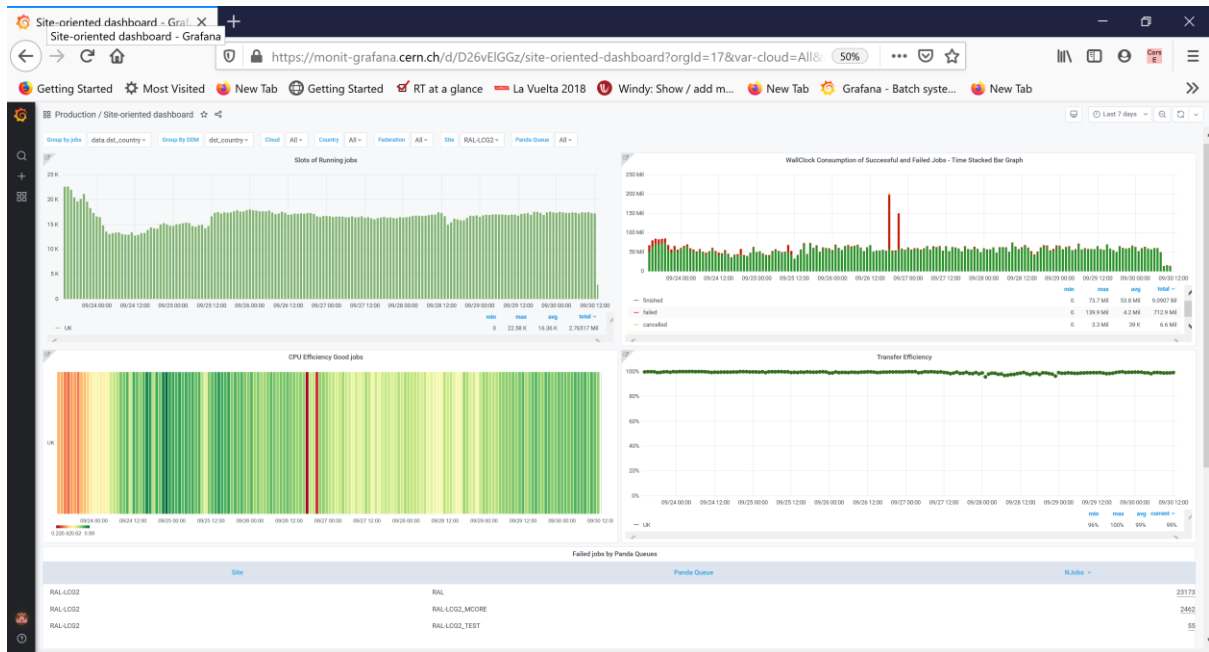
## ATLAS:

<http://hammercloud.cern.ch/hc/app/atlas/siteoverview/?site=RAL-LCG2&startTime=2020-06-17&endTime=2020-06-24&templateType=isGolden>

## Stage test957:

Site Dashboard:

[https://monit-grafana.cern.ch/d/D26vElGGz/site-oriented-dashboard?orgId=17&var-groupby\\_jobs=data.dst\\_country&var-groupby\\_ddm=dst\\_country&var-cloud=All&var-country=All&var-federation=All&var-site=RAL-LCG2&var-computingsite=All](https://monit-grafana.cern.ch/d/D26vElGGz/site-oriented-dashboard?orgId=17&var-groupby_jobs=data.dst_country&var-groupby_ddm=dst_country&var-cloud=All&var-country=All&var-federation=All&var-site=RAL-LCG2&var-computingsite=All)



LHCB:

[https://monit-grafana.cern.ch/d/000000619/wlcb-sitemon-historical-profiles?orgId=20&from=now-30d&to=now&var-vo=lhcb&var-profile=LHCB\\_CRITICAL&var-dst\\_tier=1&var-dst\\_country=UK&var-dst\\_federation=All&var-dst\\_experiment\\_site=LCG.RAL.uk&var-service\\_flavour=ARC-CE&var-dst\\_hostname=All&var-recomputation=status](https://monit-grafana.cern.ch/d/000000619/wlcb-sitemon-historical-profiles?orgId=20&from=now-30d&to=now&var-vo=lhcb&var-profile=LHCB_CRITICAL&var-dst_tier=1&var-dst_country=UK&var-dst_federation=All&var-dst_experiment_site=LCG.RAL.uk&var-service_flavour=ARC-CE&var-dst_hostname=All&var-recomputation=status)

