

Issues/Successes this week:

CMS jobs stable after AAA service intervention.

CMSM moving to rucio

Accounting progress ongoing.

Open Tickets:

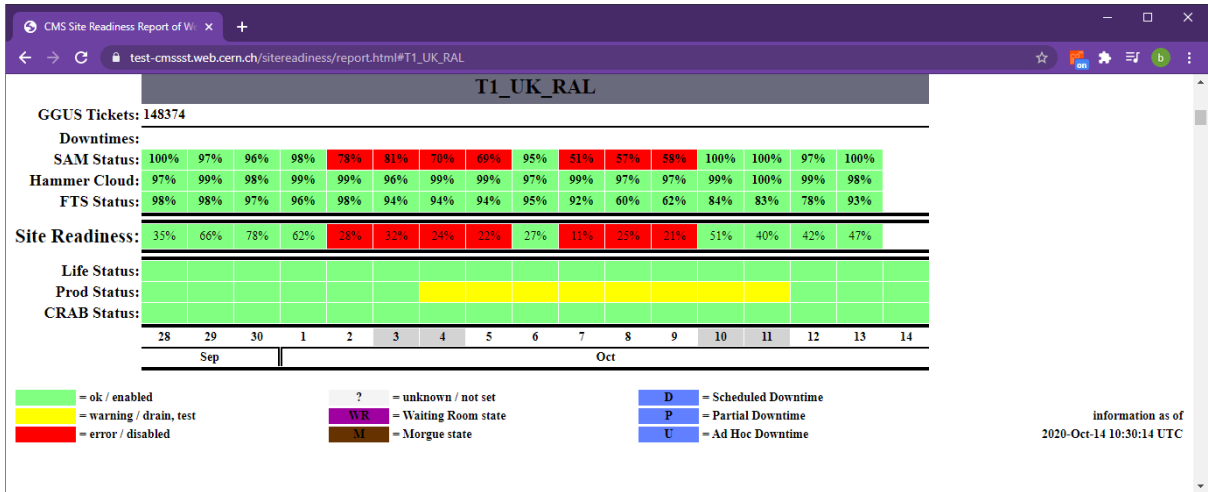
Ticket-ID	Type	VO	Site	Priority	Responsible Unit	Status	Last Update	Subject	Scope
148975	USER	none	RAL-LCG2	less urgent	NGI_UK	in progress	2020-10-12 10:33:00	Decommissioning of myproxy.gridpp.rl.ac.uk	EGI
148970	USER	snoplus.snolab.ca	RAL-LCG2	less urgent	NGI_UK	in progress	2020-10-13 12:35:00	BDII Issue	EGI
148951	USER	ilc	RAL-LCG2	less urgent	NGI_UK	waiting for reply	2020-10-13 17:22:00	please replicate clicdp.cern.ch at RAL stratum-1 cvmfs	EGI
148701	TEAM	lhcb	RAL-LCG2	very urgent	NGI_UK	in progress	2020-10-14 10:25:00	Auth failed for one user	WLCG
148374	USER	cms	RAL-LCG2	urgent	NGI_UK	in progress	2020-10-12 12:13:00	Files access is timing out at T1_UK_RAL	WLCG
148153	USER	snoplus.snolab.ca	RAL-LCG2	less urgent	NGI_UK	waiting for reply	2020-09-30 11:30:00	Transfer instability to RAL	EGI
147622	USER	snoplus.snolab.ca	RAL-LCG2	urgent	NGI_UK	waiting for reply	2020-10-13 12:19:00	Bulk transfer of data from RAL to Canadian site	EGI
146651	TEAM	atlas	RAL-LCG2	urgent	NGI_UK	on hold	2020-08-10 10:59:00	singularity and user NS setup at RAL	WLCG
143669	USER	snoplus.snolab.ca	RAL-LCG2	urgent	NGI_UK	on hold	2020-04-27 08:45:00	SNO+ LFC to DFC migration	EGI
143624	USER	snoplus.snolab.ca	RAL-LCG2	less urgent	NGI_UK	on hold	2020-05-18 12:35:00	Master tracking ticket to track snoplus.snolab.ca LFC to DFC transition	EGI
142350	TEAM	lhcb	RAL-LCG2	top priority	NGI_UK	on hold	2020-08-26 12:40:00	Proble accessing some LHCb files at RAL	WLCG

Closed tickets:

Ticket-ID	Type	VO	Site	Priority	Responsible Unit	Status	Last Update	Subject	Scope
148799	TEAM	lhcb	RAL-LCG2	very urgent	NGI_UK	verified	2020-10-07 13:43:00	arcinfo arc-ce03.gridpp.rl.ac.uk is unavailable at RAL-LCG2	WLCG
148793	TEAM	atlas	RAL-LCG2	less urgent	NGI_UK	closed	2020-10-13 23:59:00	UK RAL jobs failing due to the mostly Athena crash	WLCG

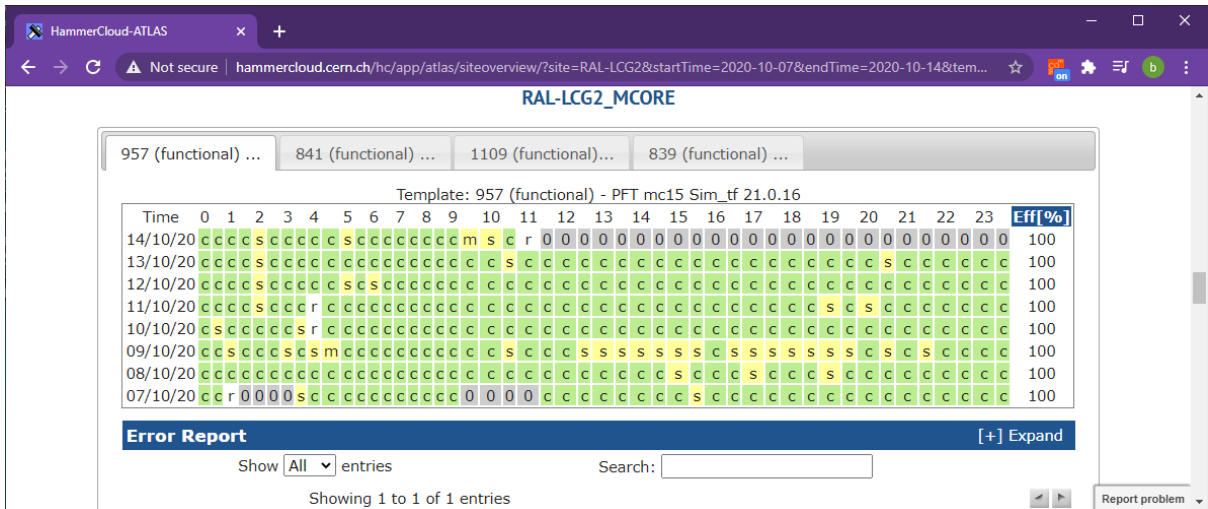
CMS:

https://test-cmsst.web.cern.ch/sitereadiness/report.html#T1_UK_RAL

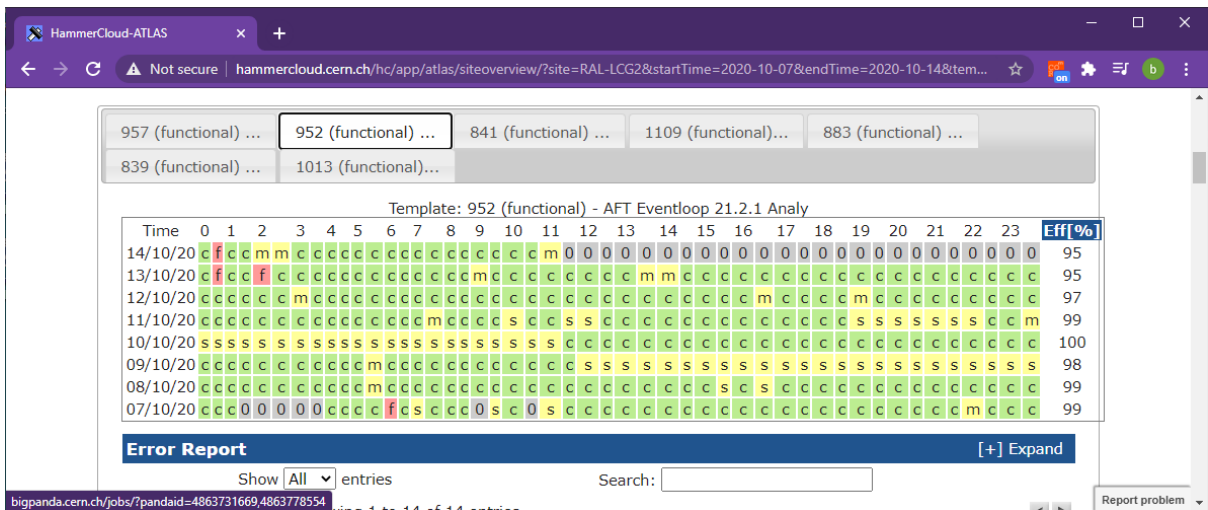


ATLAS:

<http://hammercloud.cern.ch/hc/app/atlas/siteoverview/?site=RAL-LCG2&startTime=2020-06-17&endTime=2020-06-24&templateType=isGolden>

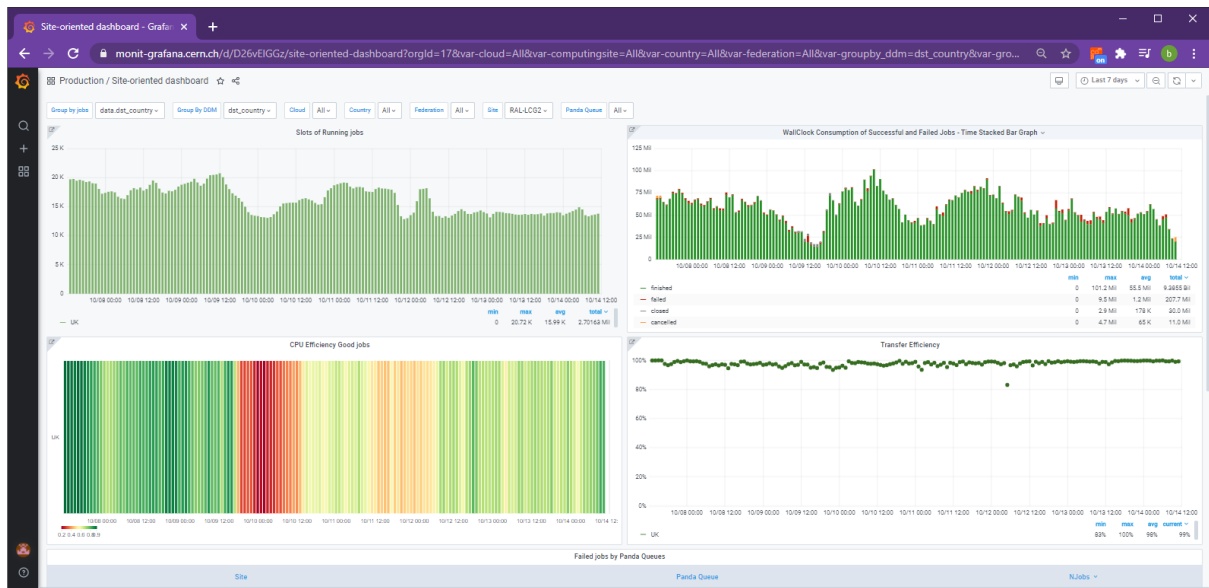


Test952:



Site Dashboard:

https://monit-grafana.cern.ch/d/D26vEIGGz/site-oriented-dashboard?orgId=17&var-groupby_jobs=data.dst_country&var-groupby_ddm=dst_country&var-cloud=All&var-country=All&var-federation=All&var-site=RAL-LCG2&var-computingsite=All



LHCB:

https://monit-grafana.cern.ch/d/000000619/wlcb-sitemon-historical-profiles?orgId=20&from=now-30d&to=now&var-vo=lhcb&var-profile=LHCB_CRITICAL&var-dst_tier=1&var-dst_country=UK&var-dst_federation=All&var-dst_experiment_site=LCG.RAL.uk&var-service_flavour=ARC-CE&var-dst_hostname=All&var-recomputation=status

