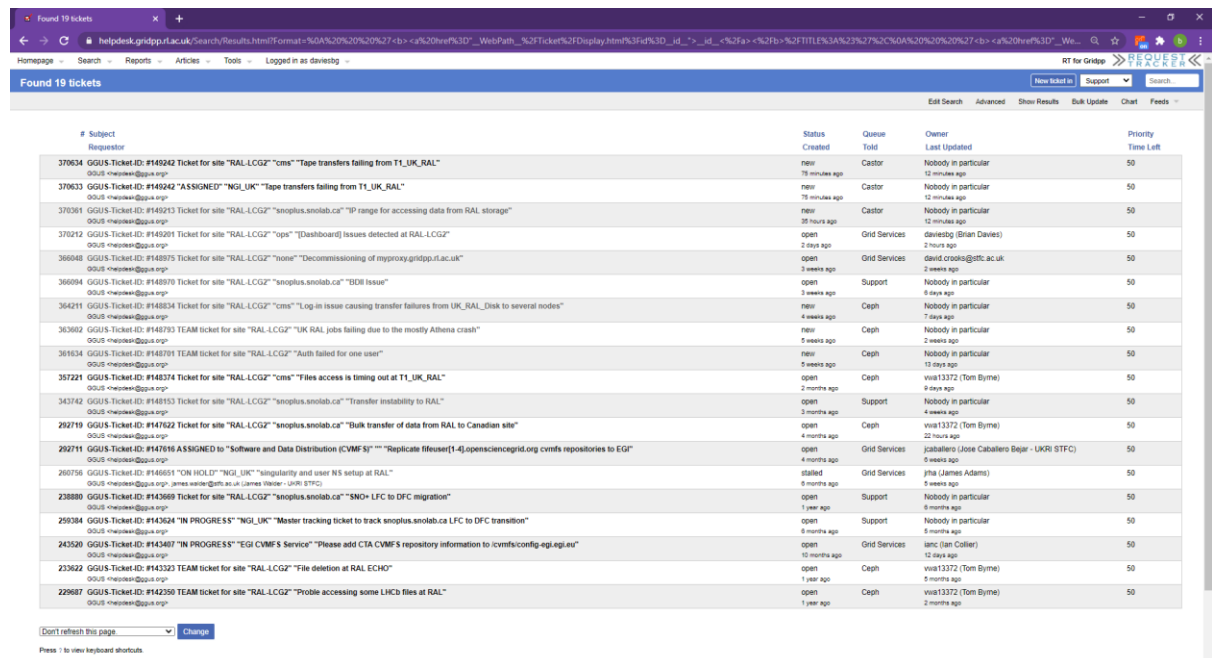


## Issues/Successes this week:

WAN xrootd issues.

OPN/site physical network interventions on fibre

## Open Tickets:



#	Subject	Status	Queue	Owner	Last Updated	Priority
370634	GGUS-Ticket ID: #149242 Ticket for site "RAL-LCG2" "cms" "Tape transfers failing from T1_UK_RAL"	new	Castor	Nobody in particular	13 minutes ago	50
370633	GGUS-Ticket ID: #149242 "A ASSIGNED" "NGL_UK" "Tape transfers failing from T1_UK_RAL"	new	Castor	Nobody in particular	12 minutes ago	50
370361	GGUS-Ticket ID: #149243 Ticket for site "RAL-LCG2" "snoplus.snoilab.ca" "IP range for accessing data from RAL storage"	new	Castor	Nobody in particular	12 minutes ago	50
370212	GGUS-Ticket ID: #149261 Ticket for site "RAL-LCG2" "apps" "Dashboard" issues detected at RAL-LCG2"	open	Grid Services	daviesdg (Brian Davies)	2 hours ago	50
366848	GGUS-Ticket ID: #148975 Ticket for site "RAL-LCG2" "tools" "Decommissioning of myproxy.gridpp.rl.ac.uk"	open	Grid Services	david.crooks@stfc.ac.uk	2 weeks ago	50
366894	GGUS-Ticket ID: #148970 Ticket for site "RAL-LCG2" "snoplus.snoilab.ca" "DBR Issue"	open	Support	Nobody in particular	6 days ago	50
364211	GGUS-Ticket ID: #148834 Ticket for site "RAL-LCG2" "cms" "Log in issue causing transfer failures from UK_RAL_Disk to several nodes"	new	Ceph	Nobody in particular	7 days ago	50
363802	GGUS-Ticket ID: #148793 TEAM ticket for site "RAL-LCG2" "UK RAL jobs failing due to the mostly Athena crash"	new	Ceph	Nobody in particular	2 weeks ago	50
361834	GGUS-Ticket ID: #148701 TEAM ticket for site "RAL-LCG2" "Auth failed for one user"	new	Ceph	Nobody in particular	13 days ago	50
357221	GGUS-Ticket ID: #148374 Ticket for site "RAL-LCG2" "cms" "Files access is timing out at T1_UK_RAL"	open	Ceph	vua13372 (Tom Byrne)	6 days ago	50
343742	GGUS-Ticket ID: #148153 Ticket for site "RAL-LCG2" "snoplus.snoilab.ca" "Transfer instability to RAL"	open	Support	Nobody in particular	4 weeks ago	50
292719	GGUS-Ticket ID: #147622 Ticket for site "RAL-LCG2" "snoplus.snoilab.ca" "Bulk transfer of data from RAL to Canadian site"	open	Ceph	vua13372 (Tom Byrne)	22 hours ago	50
292711	GGUS-Ticket ID: #147616 ASSIGNED to "Software and Data Distribution (CVMF S)" "" "Replicate fileuser(1-4) opensciencegrid.org cvmfs repositories to EGI"	open	Grid Services	jabalero (Jose Caballero Bejar - UKRI STFC)	5 weeks ago	50
260756	GGUS-Ticket ID: #146651 "ON HOLD" "NGL_UK" "Irregularity and user NS setup at RAL"	stalled	Grid Services	jha (James Adams)	5 weeks ago	50
238880	GGUS-Ticket ID: #143969 Ticket for site "RAL-LCG2" "snoplus.snoilab.ca" "SNO+ LFC to DFC migration"	open	Support	Nobody in particular	6 months ago	50
250394	GGUS-Ticket ID: #143624 "IN PROGRESS" "NGL_UK" "Master tracking ticket to track snoplus.snoilab.ca LFC to DFC transition"	open	Support	Nobody in particular	6 months ago	50
243420	GGUS-Ticket ID: #143480 "IN PROGRESS" "EGI CVMF S Service" "Please add CTA CVMF S repository information to cvmfsconfig-egi.eui.eu"	open	Grid Services	ianc (Jan Collier)	10 days ago	50
233822	GGUS-Ticket ID: #143323 TEAM ticket for site "RAL-LCG2" "File deletion at RAL ECHO"	open	Ceph	vua13372 (Tom Byrne)	5 months ago	50
229887	GGUS-Ticket ID: #142350 TEAM ticket for site "RAL-LCG2" "Proble accessing some LHCb files at RAL"	open	Ceph	vua13372 (Tom Byrne)	2 months ago	50

## Closed tickets:

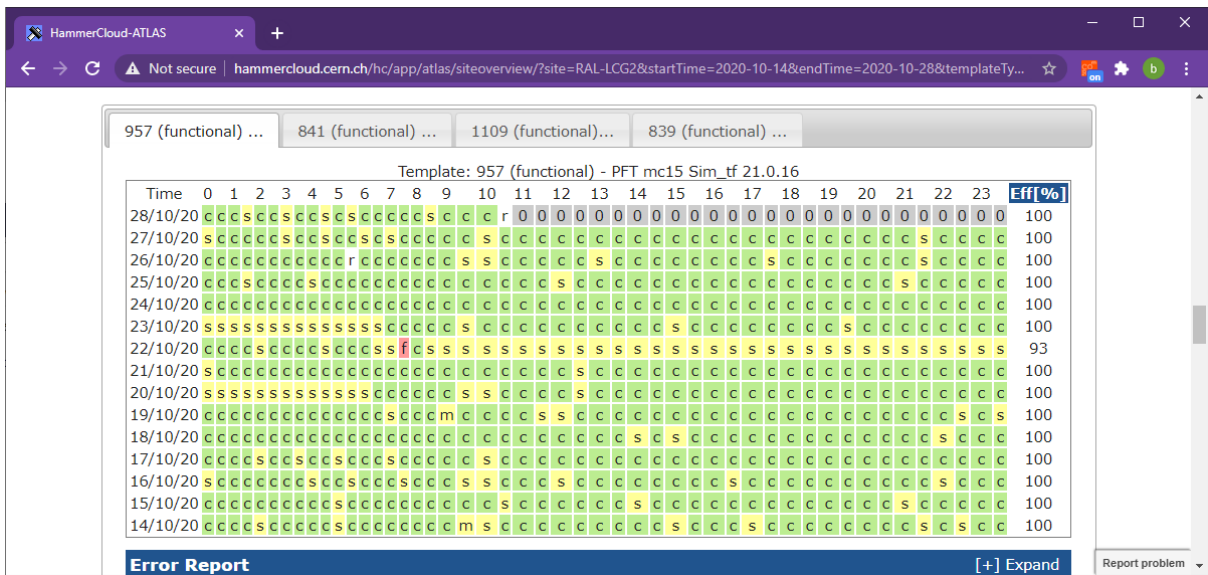
## CMS:

[https://test-cmsst.web.cern.ch/sitereadiness/report.html#T1\\_UK\\_RAL](https://test-cmsst.web.cern.ch/sitereadiness/report.html#T1_UK_RAL)

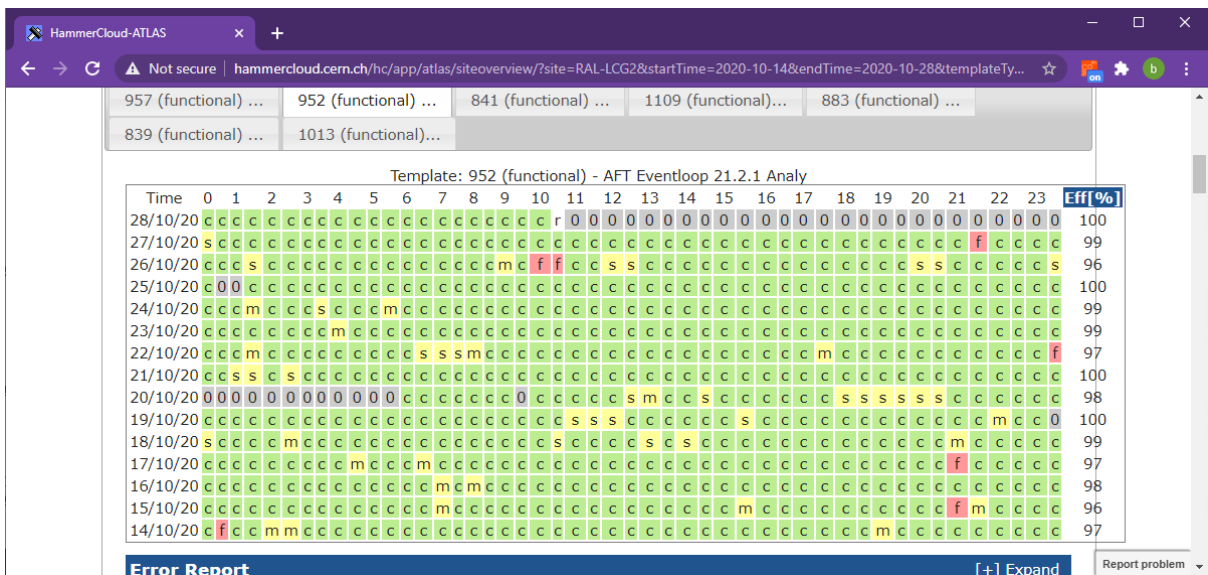
## ATLAS:

<http://hammercloud.cern.ch/hc/app/atlas/siteoverview/?site=RAL-LCG2&startTime=2020-06-17&endTime=2020-06-24&templateType=isGolden>

## Test 957:

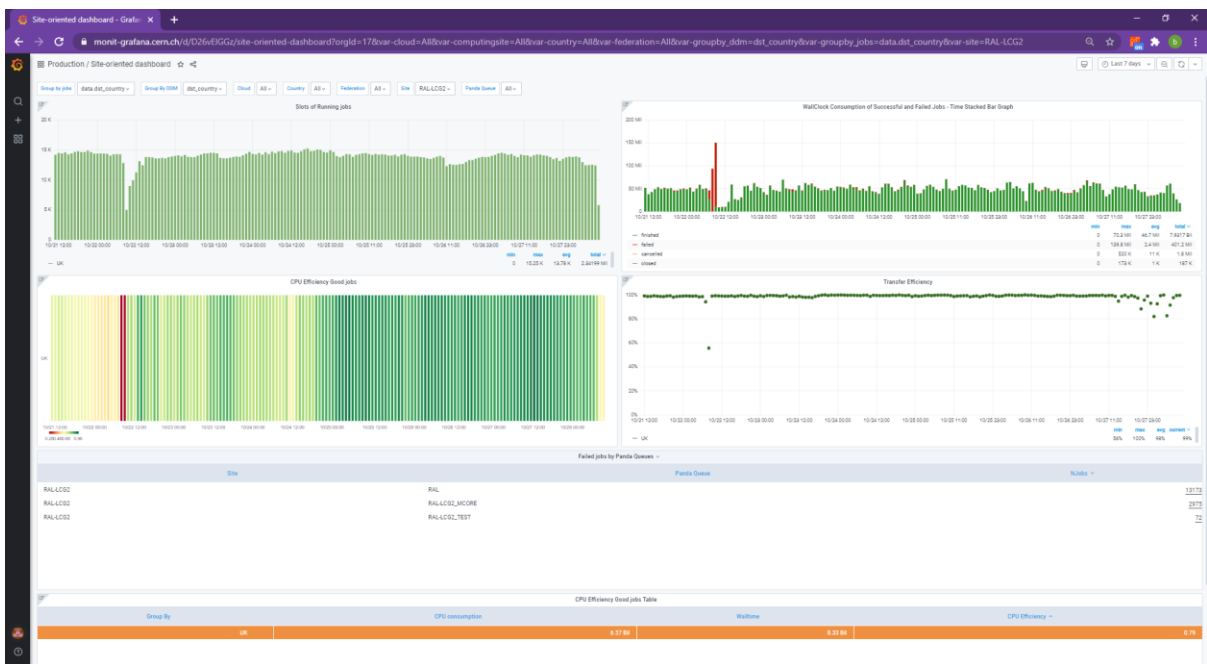


**Test952:**



Site Dashboard:

[https://monit-grafana.cern.ch/d/D26vEIGGz/site-oriented-dashboard?orgId=17&var-groupby\\_jobs=data.dst\\_country&var-groupby\\_ddm=dst\\_country&var-cloud=All&var-country=All&var-federation=All&var-site=RAL-LCG2&var-computingsite=All](https://monit-grafana.cern.ch/d/D26vEIGGz/site-oriented-dashboard?orgId=17&var-groupby_jobs=data.dst_country&var-groupby_ddm=dst_country&var-cloud=All&var-country=All&var-federation=All&var-site=RAL-LCG2&var-computingsite=All)



LHCB:

[https://monit-grafana.cern.ch/d/000000619/wlcb-sitemon-historical-profiles?orgId=20&from=now-30d&to=now&var-vo=lhcb&var-profile=LHCB\\_CRITICAL&var-dst\\_tier=1&var-dst\\_country=UK&var-dst\\_federation=All&var-dst\\_experiment\\_site=LCG.RAL.uk&var-service\\_flavour=ARC-CE&var-dst\\_hostname=All&var-recomputation=status](https://monit-grafana.cern.ch/d/000000619/wlcb-sitemon-historical-profiles?orgId=20&from=now-30d&to=now&var-vo=lhcb&var-profile=LHCB_CRITICAL&var-dst_tier=1&var-dst_country=UK&var-dst_federation=All&var-dst_experiment_site=LCG.RAL.uk&var-service_flavour=ARC-CE&var-dst_hostname=All&var-recomputation=status)

