

Issues/Successes this week:

ARC-CE issue lead to partial drain of jobs. Recovering.

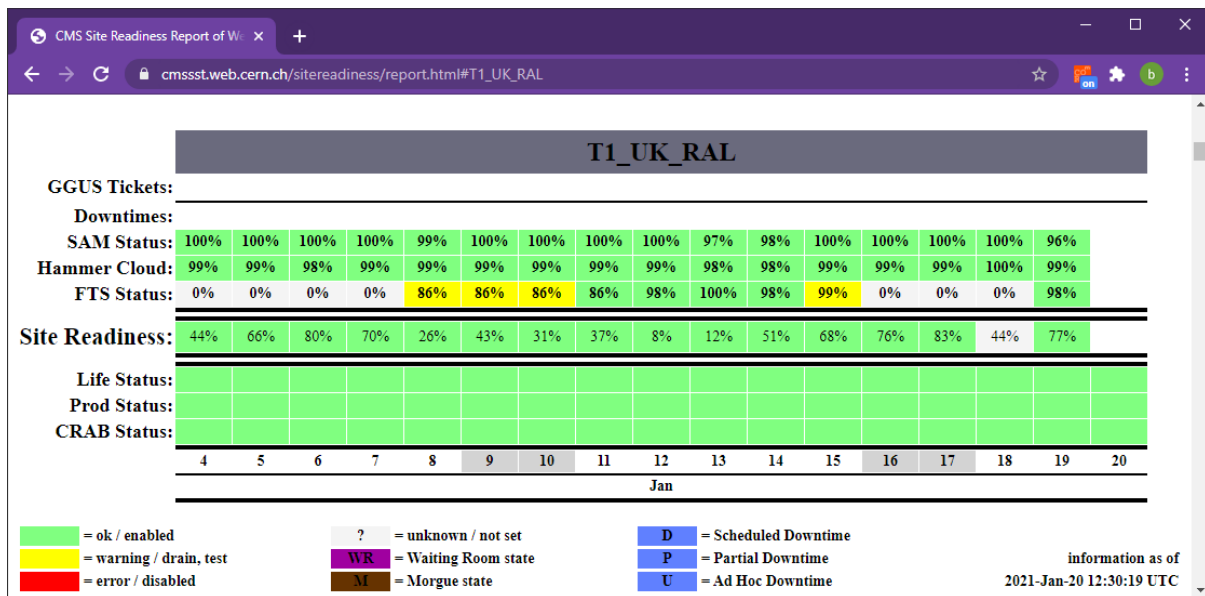
Open Tickets:

Ticket-ID	Type	VO	Site	Priority	Responsible Unit	Status	Last Update	Subject	Scope
150112	USER	biomed	RAL-LCG2	urgent	NGI_UK	in progress	2021-01-14 16:43:00	Singularity issues	EGI
149909	TEAM	lhcb	RAL-LCG2	top priority	NGI_UK	in progress	2021-01-18 09:23:00	User file access at RAL ECHO	WLCG
146651	TEAM	atlas	RAL-LCG2	urgent	NGI_UK	on hold	2021-01-19 10:05:00	singularity and user NS setup at RAL	WLCG
142350	TEAM	lhcb	RAL-LCG2	top priority	NGI_UK	on hold	2021-01-15 11:18:00	Proble accessing some LHCb files at RAL	WLCG

Closed tickets: CMS:

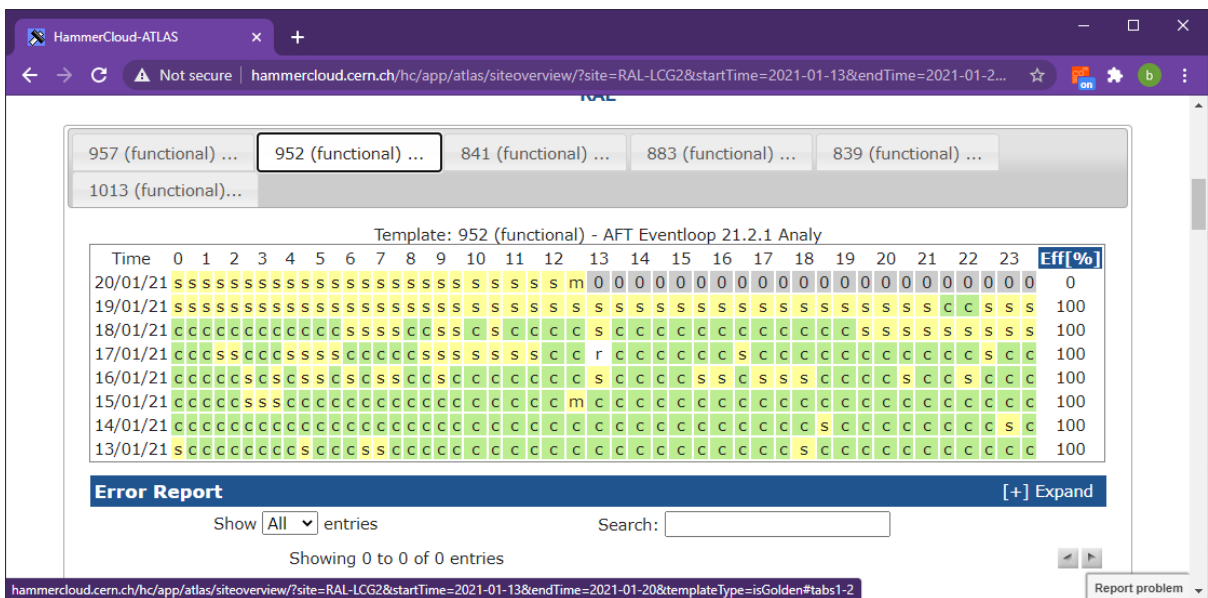
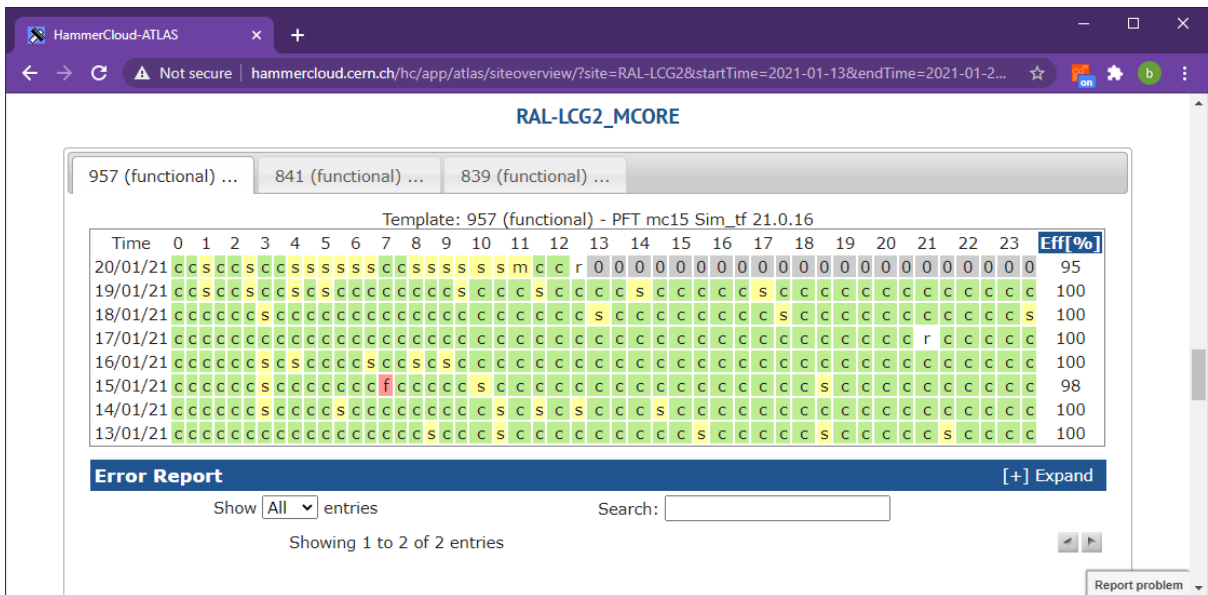
Ticket-ID	Type	VO	Site	Priority	Responsible Unit	Status	Last Update	Subject	Scope
150207	USER	cms	RAL-LCG2	urgent	NGI_UK	verified	2021-01-14 16:47:00	Pilots at T1_UK_RAL	WLCG
149530	USER	none	RAL-LCG2	less urgent	NGI_UK	solved	2021-01-18 13:35:00	Decommissioning of lfc.gridpp.rl.ac.uk	EGI

https://cmsst.web.cern.ch/sitereadiness/report.html#T1_UK_RAL



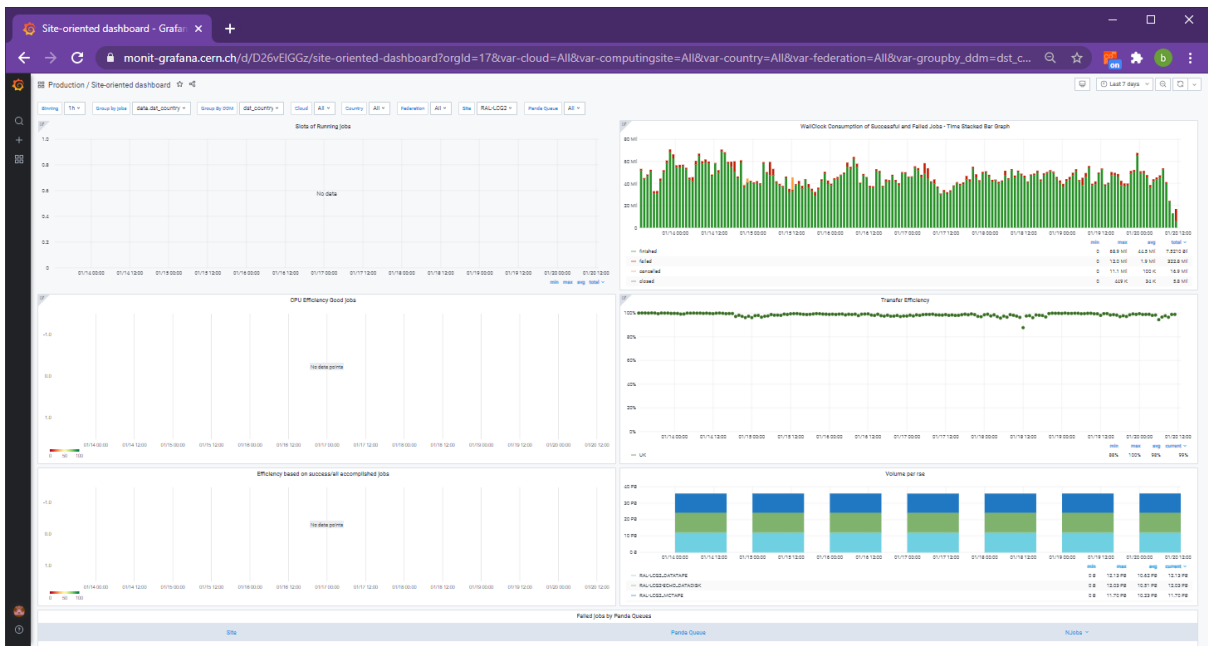
ATLAS:

<http://hammercloud.cern.ch/hc/app/atlas/siteoverview/?site=RAL-LCG2&startTime=2021-01-06&endTime=2021-01-13&templateType=isGolden>



Site Dashboard:

https://monit-grafana.cern.ch/d/D26vElGGz/site-oriented-dashboard?orgId=17&var-groupby_jobs=data.dst_country&var-groupby_ddm=dst_country&var-cloud=All&var-country=All&var-federation=All&var-site=RAL-LCG2&var-computingsite=All



LHCB:

https://monit-grafana.cern.ch/d/000000619/wlcb-sitemon-historical-profiles?orgId=20&from=now-30d&to=now&var-vo=lhcb&var-profile=LHCB_CRITICAL&var-dst_tier=1&var-dst_country=UK&var-dst_federation=All&var-dst_experiment_site=LCG.RAL.uk&var-service_flavour=ARC-CE&var-dst_hostname=All&var-recomputation=status

