

Issues/Successes this week:

Issue with vande monitoring of batch system resolved

Lhcb job reduction slowly resolving

CMS AAA issues

Ceph GW cluster check

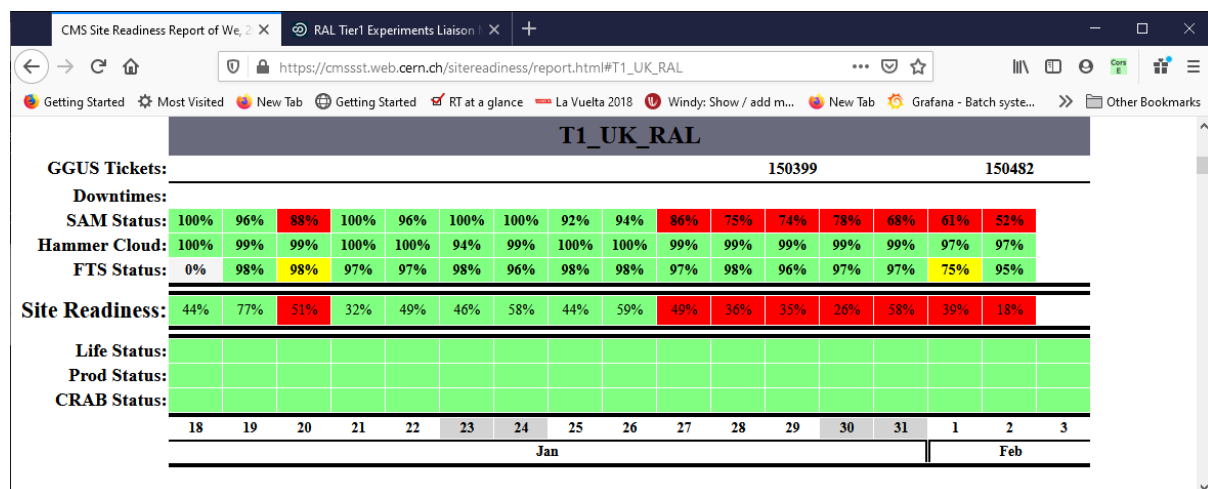
Open Tickets:

Ticket-ID	Type	VO	Site	Priority	Responsible Unit	Status	Last Update	Subject	Scope
150482	USER	cms	RAL-LCG2	very urgent	NGI_UK	in progress	2021-02-03 10:28:00	enabling AREX service at ARC-CE(s) at (T1_UK_RAL)	WLCG
150399	USER	cms	RAL-LCG2	less urgent	NGI_UK	in progress	2021-02-01 11:38:00	WebDAV endpoint at RAL	WLCG
150325	USER	none	RAL-LCG2	less urgent	NGI_UK	in progress	2021-01-25 16:16:00	No data available in perfsonar table (RAL-LCG2)	EGI
150112	USER	biomed	RAL-LCG2	urgent	NGI_UK	waiting for reply	2021-02-03 08:09:00	Singularity issues	EGI
146651	TEAM	atlas	RAL-LCG2	urgent	NGI_UK	on hold	2021-01-19 10:05:00	singularity and user NS setup at RAL	WLCG
142350	TEAM	lhcb	RAL-LCG2	top priority	NGI_UK	on hold	2021-01-15 11:18:00	Proble accessing some LHCb files at RAL	WLCG

Closed tickets:

Ticket-ID	Type	VO	Site	Priority	Responsible Unit	Status	Last Update	Subject	Scope
150369	ALARM	none	RAL-LCG2	top priority	NGI_UK	solved	2021-01-27 11:31:00	This TEST ALARM has been raised for testing GGUS alarm work flow after a new GGUS release.	EGI
149530	USER	none	RAL-LCG2	less urgent	NGI_UK	closed	2021-02-01 23:59:00	Decommissioning of lfc.gridpp.rl.ac.uk	EGI

CMS: https://cmsst.web.cern.ch/sitereadiness/report.html#T1_UK_RAL



ATLAS:

<http://hammercloud.cern.ch/hc/app/atlas/siteoverview/?site=RAL-LCG2&startTime=2021-01-06&endTime=2021-01-13&templateType=isGolden>

957 (functional) ... 841 (functional) ... 839 (functional) ...

Template: 957 (functional) - PFT mc15 Sim_tf 21.0.16

Time	0	1	2	3	4	5	6	7	8	9	10	11	12	13	14	15	16	17	18	19	20	21	22	23	Eff[%]	
03/02/21	c	c	c	c	c	c	c	c	c	c	c	c	c	c	c	r	0	0	0	0	0	0	0	0	0	100
02/02/21	f	c	c	c	s	c	c	s	c	s	c	c	c	c	c	c	c	c	c	c	c	c	f	c	c	96
01/02/21	c	c	c	c	c	c	c	c	c	c	c	c	c	c	c	s	c	c	c	s	s	c	c	c	c	100
31/01/21	s	s	s	s	s	s	s	s	s	s	s	s	s	s	s	s	s	s	s	s	s	s	s	s	s	100
30/01/21	c	c	c	c	c	c	c	c	c	c	c	c	c	c	c	s	s	s	s	s	s	s	s	s	s	100
29/01/21	c	c	c	c	c	c	c	c	c	c	c	c	c	c	c	c	c	c	c	c	c	c	c	c	c	100
28/01/21	c	s	c	m	s	r	s	c	c	c	c	c	c	c	s	m	c	c	c	c	c	c	c	c	c	96
27/01/21	c	s	c	s	c	c	s	c	c	c	c	c	c	c	c	c	c	c	c	c	c	c	c	c	c	100

Error Report [+] Expand

Show entries Search:

Report problem

Template: 952 (functional) - AFT Eventloop 21.2.1 Analy

Time	0	1	2	3	4	5	6	7	8	9	10	11	12	13	14	15	16	17	18	19	20	21	22	23	Eff[%]	
03/02/21	c	c	c	c	c	c	s	c	s	s	s	s	s	s	s	s	0	0	0	0	0	0	0	0	100	
02/02/21	c	c	c	c	c	c	c	c	c	c	c	c	c	c	c	c	c	c	c	c	c	c	c	c	100	
01/02/21	c	c	c	c	c	c	c	c	c	c	c	c	c	c	c	s	c	c	c	f	s	s	s	s	98	
31/01/21	c	c	c	c	c	c	c	c	c	c	c	c	c	c	s	c	c	c	c	c	c	s	c	c	100	
30/01/21	c	c	c	c	c	c	c	c	c	c	s	c	c	c	c	m	c	c	c	c	c	c	m	0	0	100
29/01/21	c	c	c	c	c	c	c	c	c	c	c	c	c	c	m	c	c	c	c	c	s	c	c	c	100	
28/01/21	c	s	s	s	s	c	c	c	c	c	c	c	m	c	f	c	c	c	m	c	c	c	c	c	98	
27/01/21	c	c	s	c	c	s	c	c	c	c	c	c	c	c	c	c	c	c	c	c	c	m	c	c	99	

Error Report [+] Expand

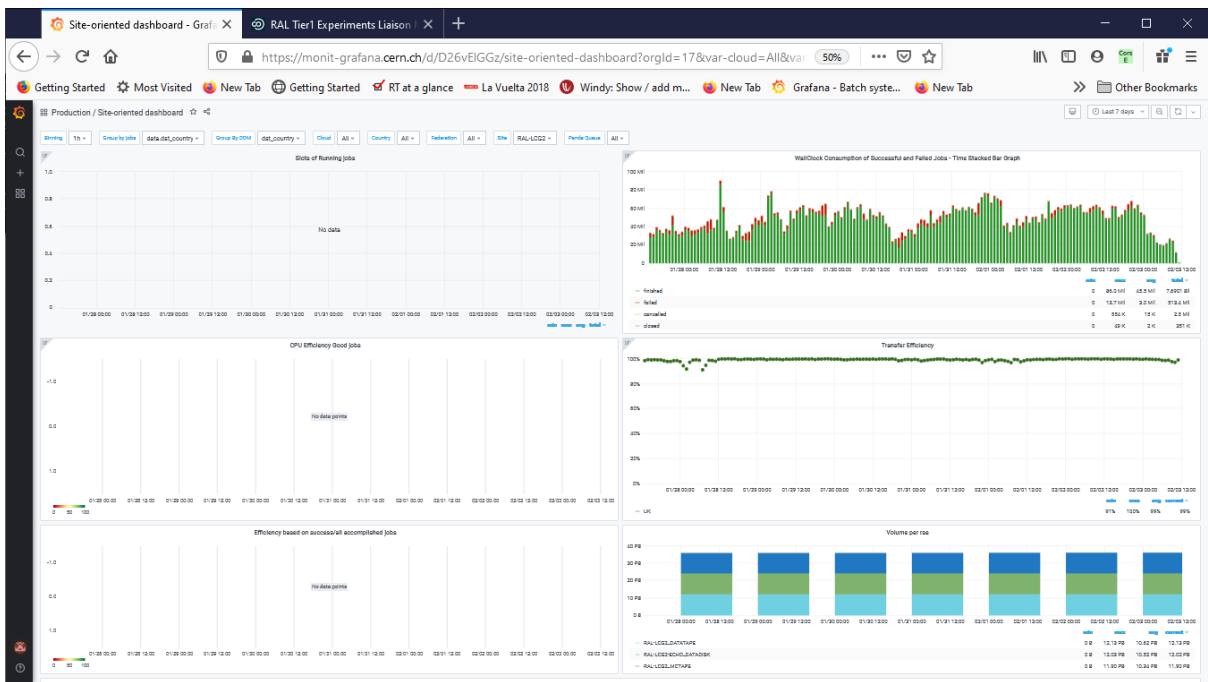
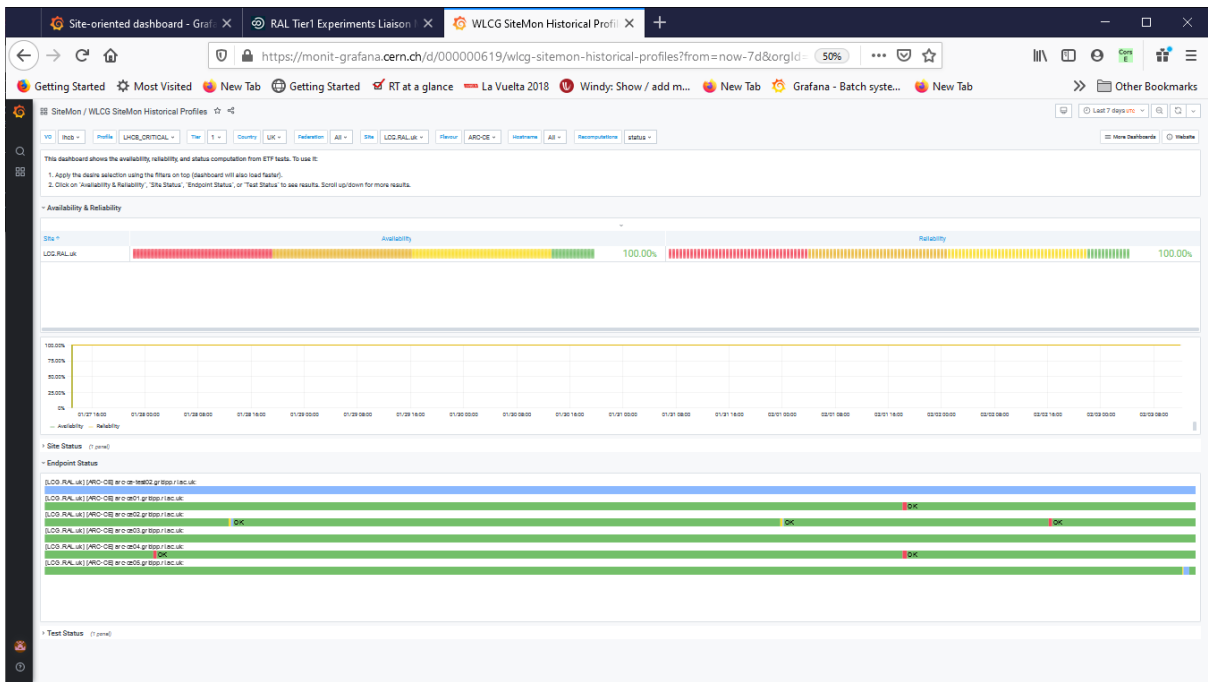
Show entries Search:

Showing 1 to 5 of 5 entries

Report problem

Site Dashboard:

https://monit-grafana.cern.ch/d/D26vEIGGz/site-oriented-dashboard?orgId=17&var-groupby_jobs=data.dst_country&var-groupby_ddm=dst_country&var-cloud=All&var-country=All&var-federation=All&var-site=RAL-LCG2&var-computingsite=All



LHCB:

https://monit-grafana.cern.ch/d/000000619/wlwg-sitemon-historical-profiles?orgId=20&from=now-30d&to=now&var-vo=lhcb&var-profile=LHCB_CRITICAL&var-dst_tier=1&var-dst_country=UK&var-dst_federation=All&var-dst_experiment_site=LCG.RAL.uk&var-service_flavour=ARC-CE&var-dst_hostname=All&var-recomputation=status