

Issues/Successes this week:

Single MINOS file issue with tape migration.

LHCB usage under investigation.

Perfsonar investigation still ongoing

A new firewall has been purchased by DI. The transition to using it will take place towards the end of February, start of March. This may alleviate some problems CMS are having with off site reads.

CERN getting grid off bdii, expectation for NGIs to take up the slack. Do we want to...?

Open Tickets:

Ticket-ID	Type	VO	Site	Priority	Responsible Unit	Status	Last Update	Subject	Scope
150581	USER	other	RAL-LCG2	urgent	NGI_UK	in progress	2021-02-10 11:32:00	Rucio file upload file upload Tier-1 ECHO store problem	EGI
150580	USER	other	RAL-LCG2	urgent	NGI_UK	in progress	2021-02-10 11:31:00	Multi-VO Rucio server at RAL - Documentation	EGI
150567	USER	other	RAL-LCG2	urgent	NGI_UK	in progress	2021-02-09 15:24:00	Add gridpp VO to multi-VO Rucio instance	EGI
150482	USER	cms	RAL-LCG2	very urgent	NGI_UK	in progress	2021-02-09 11:18:00	enabling AREX service at ARC-CE(s) at (T1_UK_RAL)	WLCG
150399	USER	cms	RAL-LCG2	less urgent	NGI_UK	in progress	2021-02-10 10:55:00	WebDAV endpoint at RAL	WLCG
146651	TEAM	atlas	RAL-LCG2	urgent	NGI_UK	on hold	2021-01-19 10:05:00	singularity and user NS setup at RAL	WLCG
142350	TEAM	lhcb	RAL-LCG2	top priority	NGI_UK	on hold	2021-01-15 11:18:00	Proble accessing some LHCB files at RAL	WLCG

Closed tickets:

Ticket-ID	Type	VO	Site	Priority	Responsible Unit	Status	Last Update	Subject	Scope
150325	USER	none	RAL-LCG2	less urgent	NGI_UK	solved	2021-02-04 09:01:00	No data available in perfsonar table (RAL-LCG2)	EGI
150312	TEAM	atlas	RAL-LCG2	less urgent	NGI_UK	closed	2021-02-08 23:59:00	UK RAL-LCG2: low transfer efficiency as source due to "The source file is not ONLINE"	WLCG
150112	USER	biomed	RAL-LCG2	urgent	NGI_UK	solved	2021-02-09 08:08:00	Singularity issues	EGI

CMS:https://cmsst.web.cern.ch/sitereadiness/report.html#T1_UK_RAL

CMS Site Readiness Report of We... X

https://cmsst.web.cern.ch/sitereadiness/report.html#T1_UK_RAL

T1_UK_RAL

GGUS Tickets: 150399 150482

Downtimes:

SAM Status: 92% 94% 86% 75% 74% 78% 68% 61% 52% 60% 100% 82% 99% 100% 100% 88%

Hammer Cloud: 100% 100% 99% 99% 99% 99% 99% 97% 97% 100% 99% 99% 100% 99% 99% 98%

FTS Status: 98% 98% 97% 98% 96% 97% 97% 75% 95% 98% 98% 98% 94% 98% 98% 94%

Site Readiness: 44% 59% 49% 36% 35% 26% 58% 39% 18% 14% 46% 46% 47% 75% 80% 56%

Life Status: [Green Grid]

Prod Status: [Green Grid]

CRAB Status: [Green Grid]

25 26 27 28 29 30 31 1 2 3 4 5 6 7 8 9 10

Jan Feb

Legend:

- [Green] = ok / enabled
- [Yellow] = warning / drain, test
- [Red] = error / disabled
- [?] = unknown / not set
- [WR] = Waiting Room state
- [M] = Morgue state
- [D] = Scheduled Downtime
- [P] = Partial Downtime
- [U] = Ad Hoc Downtime

information as of 2021-Feb-10 12:30:14 UTC

ATLAS:

<http://hammercloud.cern.ch/hc/app/atlas/siteoverview/?site=RAL-LCG2&startTime=2021-01-06&endTime=2021-01-13&templateType=isGolden>

HammerCloud-ATLAS

hammercloud.cern.ch/hc/app/atlas/siteoverview/?site=RAL-LCG2&startTime=2021-01-06&endTime=2021-01-13&templateType=isGolden

957 (functional) ... 952 (functional) ... 841 (functional) ... 883 (functional) ... 839 (functional) ...

1013 (functional)...

Template: 952 (functional) - AFT Eventloop 21.2.1 Analy

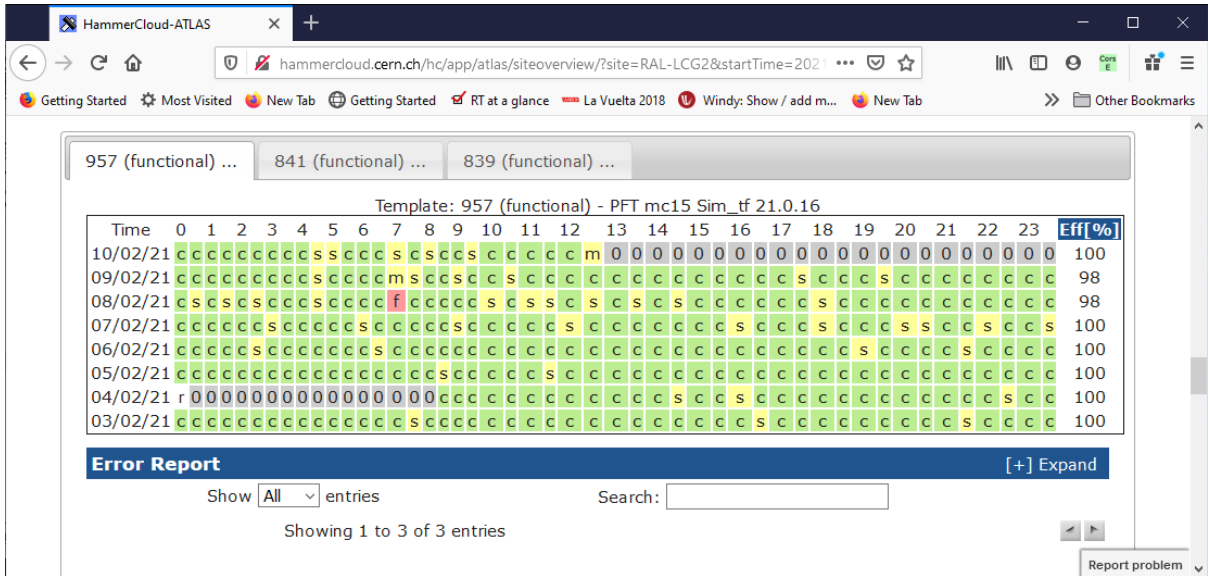
Time	0	1	2	3	4	5	6	7	8	9	10	11	12	13	14	15	16	17	18	19	20	21	22	23	Eff[%]	
10/02/21	s	c	c	s	c	c	c	c	c	c	c	c	c	s	c	c	c	s	c	c	c	m	0	0	0	100
09/02/21	c	c	s	c	c	c	c	c	c	c	c	c	c	c	s	s	c	c	c	s	c	s	s	s	c	100
08/02/21	s	c	s	c	c	c	c	c	c	c	c	c	c	c	s	s	c	c	c	c	c	c	c	c	c	100
07/02/21	c	c	c	c	c	c	c	c	c	c	c	c	c	c	c	c	c	c	c	c	c	c	c	c	c	100
06/02/21	c	c	c	c	c	c	m	c	c	c	c	c	c	c	c	c	c	c	c	c	c	c	c	c	c	100
05/02/21	c	c	c	s	c	s	c	s	c	c	c	c	c	c	c	c	c	c	c	c	c	c	c	c	c	100
04/02/21	s	s	s	s	s	s	s	s	s	s	s	s	s	s	s	s	s	s	s	s	s	s	s	s	s	100
03/02/21	c	c	c	c	c	s	c	s	s	s	s	s	s	s	s	s	s	c	c	c	c	m	c	c	c	100

Error Report [+] Expand

Show All entries Search: []

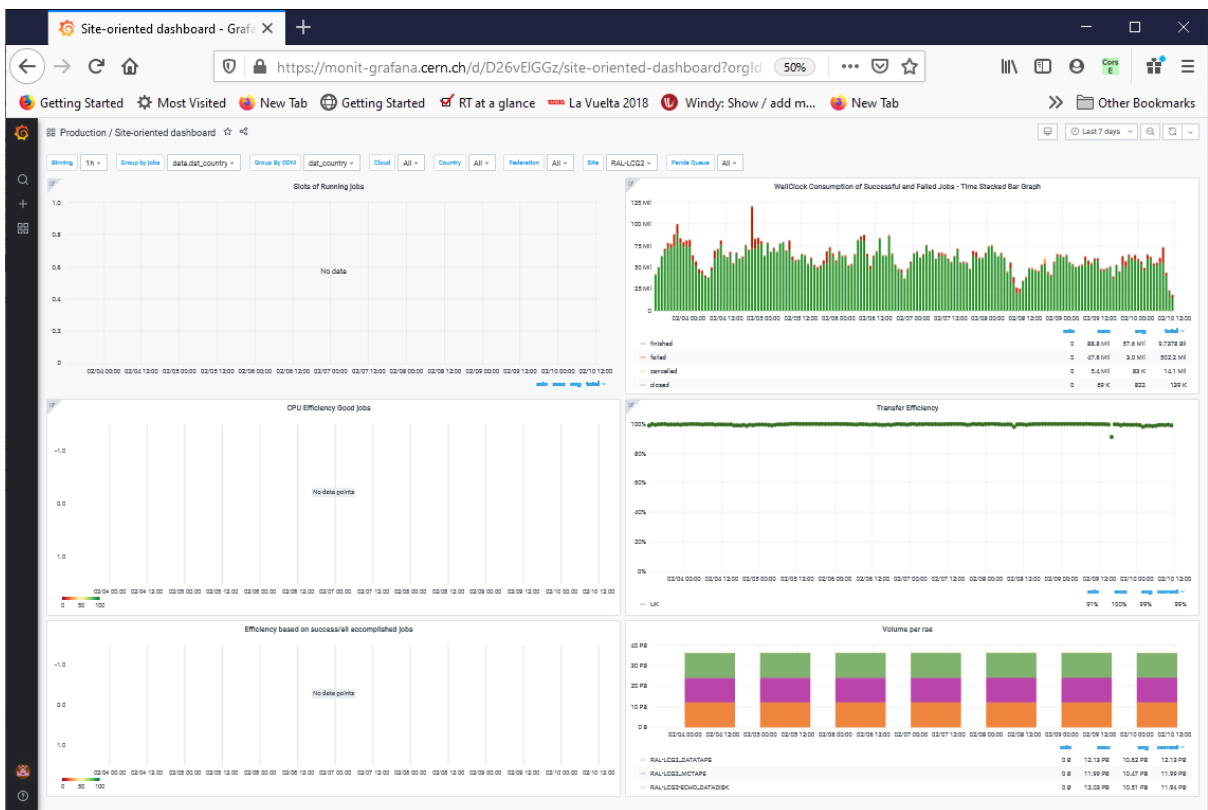
Showing 0 to 0 of 0 entries

Report problem



Site Dashboard:

https://monit-grafana.cern.ch/d/D26vElGGz/site-oriented-dashboard?orgId=17&var-groupby_jobs=data.dst_country&var-groupby_ddm=dst_country&var-cloud=All&var-country=All&var-federation=All&var-site=RAL-LCG2&var-computingsite=All



LHCB:

https://monit-grafana.cern.ch/d/000000619/wlwg-sitemon-historical-profiles?orgId=20&from=now-30d&to=now&var-vo=lhcb&var-profile=LHCB_CRITICAL&var-dst_tier=1&var-dst_country=UK&var-dst_federation=All&var-dst_experiment_site=LCG.RAL.uk&var-service_flavour=ARC-CE&var-dst_hostname=All&var-recomputation=status

