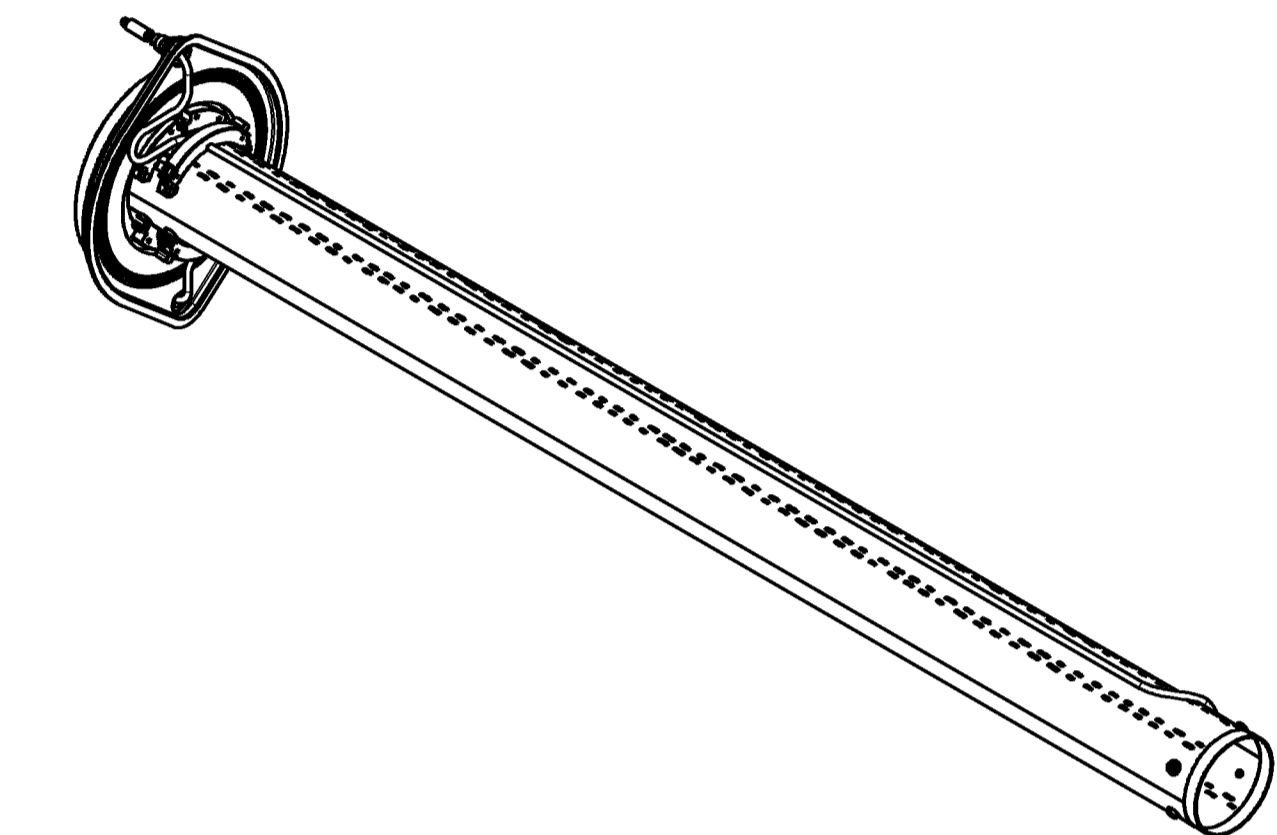
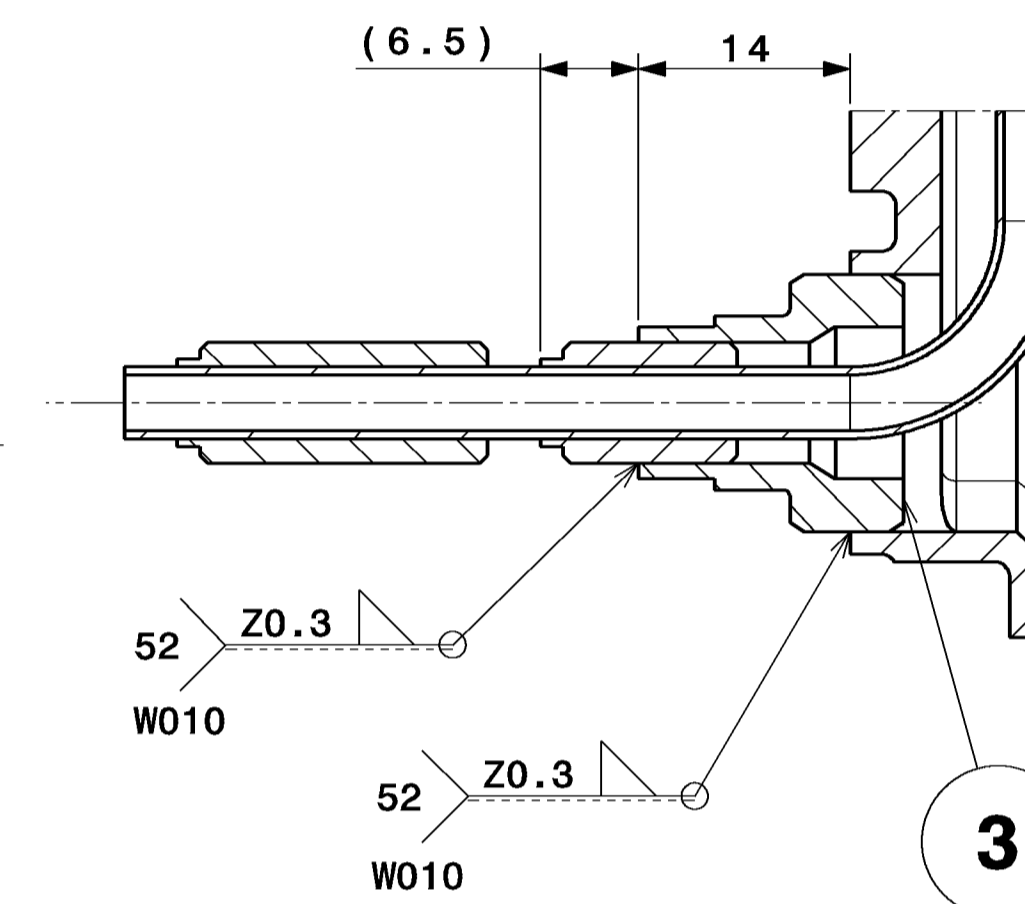
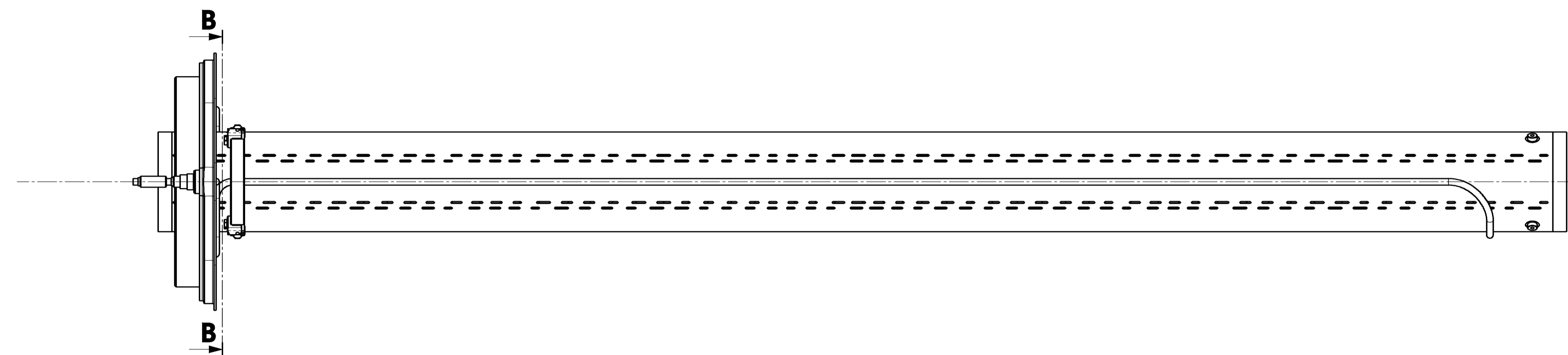
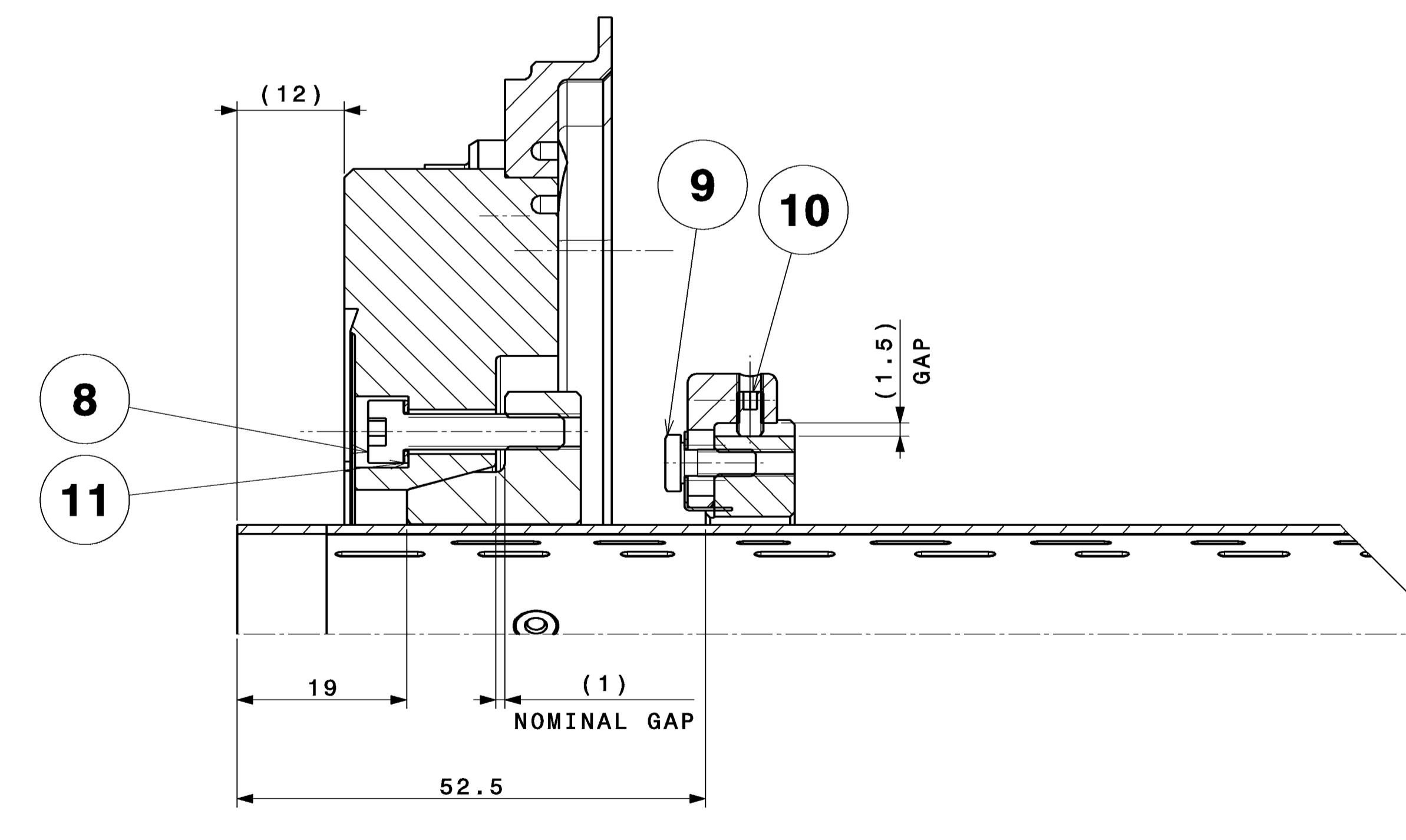
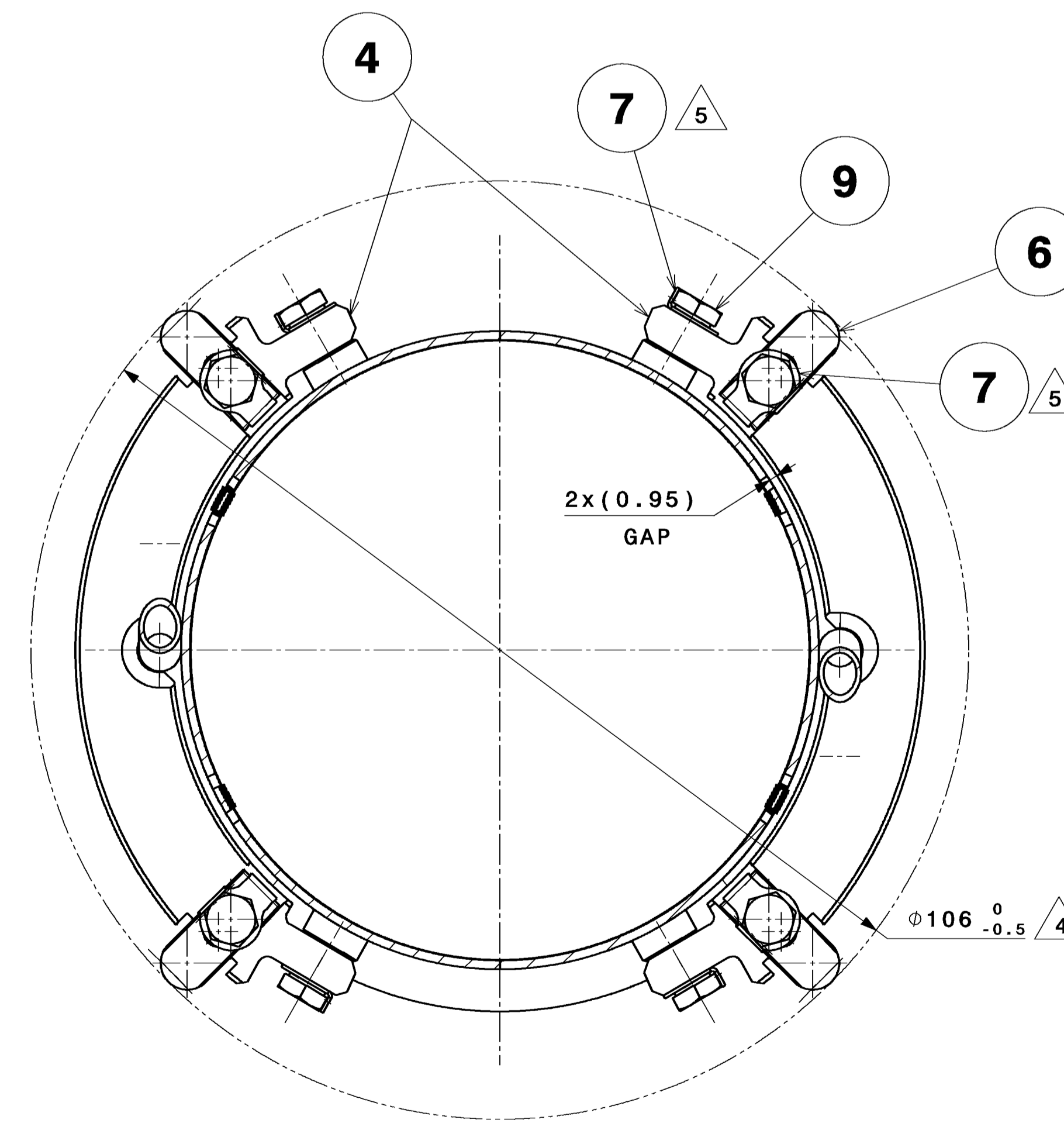
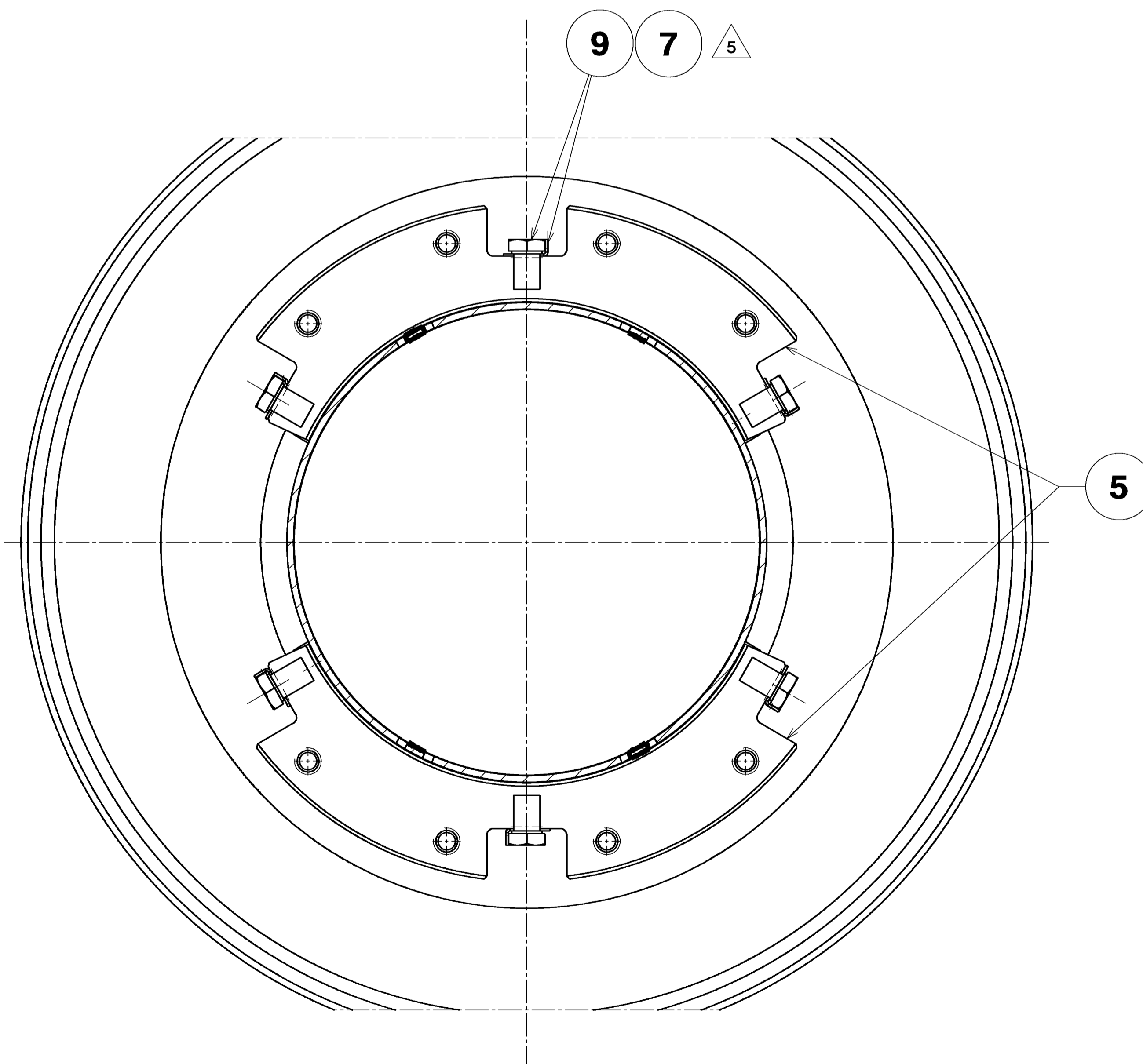


Isometric view  
1:5



Isometric view  
1:5

SECTION D-D  
2:1  
(2 PLACES)



SECTION C-C  
2:1  
ROTATED 45°

1. LASER WELDS WITH PARTIAL PENETRATION ACCORDING TO TECH. SPECIFICATION IT-2973..
2. WELDS MUST NOT BE GROUND OR FINISHED BY MECHANICAL ABRASION.
3. A LEAK RATE MORE THAN  $10^{-11}$  Pa m<sup>3</sup> s<sup>-1</sup> ( $10^{-10}$  mbar l s<sup>-1</sup>) IS UNACCEPTABLE.
4. PRE-SET ITEM 6 TO THE DIMENSION SHOWN.
5. BEND SECOND TAB WHEN INSTALLATION WERE COMPLETED.

SECTION A-A  
2:1

SECTION B-B  
2:1

BILL OF MATERIALS					
POS	QTY	DESCRIPTION	REFERENCE	MATERIAL	ENH SCWM
01	1	CIRCULAR BEAM SCREEN WELDED TUBE - IRD	LHCVSSCA0002 ST1117689		
02	1	GRAB CAVITY IRD - SPS TEST COOLING PIPE FLANGE WELDED ASSY	LHCVSSCA0009 ST1087366		
03	2	GRAB CAVITY IRD - SPS TEST COOLING TUBE CONNECTOR - SMALL	LHCVSSCA0012 ST1087408	EN 1.4429 CERH EN6 16078 (DIN6)	
04	2	ADJUSTMENT RING FOR BEAM SCREEN	LHCVSSCA0013 ST1180904	Bronze G22100	
05	2	FIX. RING ON MOBILE SIDE - BEAM SCREEN	LHCVSSCA0015 ST1180936	Bronze G22100	
06	4	MOBILE JAW - BEAM SCREEN	LHCVSSCA0014 ST1180996	Bronze G22100	
07	14	M3 TAB WASHER (2 TABS)	LHCVSSCA0016 ST1187478	St. Steel A4	
08	8	HEX SKT HD cap screw_M4x18 Vis CHC_M4x18	ISO 4762 M4x18-A4	St. Steel A4	NO CERN SCWM
09	14	HEX HD SCREW GRADE A M3X8 VIS H GRADE A M3X8	ISO 4017 M3x8-A4	St. Steel A4	
10	4	HEX SKT FT PT set screw_M3x5 Vis SS TET 6PC boot plat_M3x5	ISO 4026 M3x5-A4	St. Steel A4	
11	8	SCHNORR S Washer - 7-4.3-0.5 SCHNORR S NonStille - 7-4.3-0.5	SCHNORR : 414300 ST0837223	Bronze G22100	

NOT USED NOT APPLICABLE

DESTINATION: BEAM SCREEN PRE ASSEMBLY BEFORE FINAL WELD

APPROVED: [Signature]

DESIGNED: 2009-01-20

SCALE: 1:2

REFERENCES: Doc No: ST1195877\_02

NOT VALID FOR EXECUTION