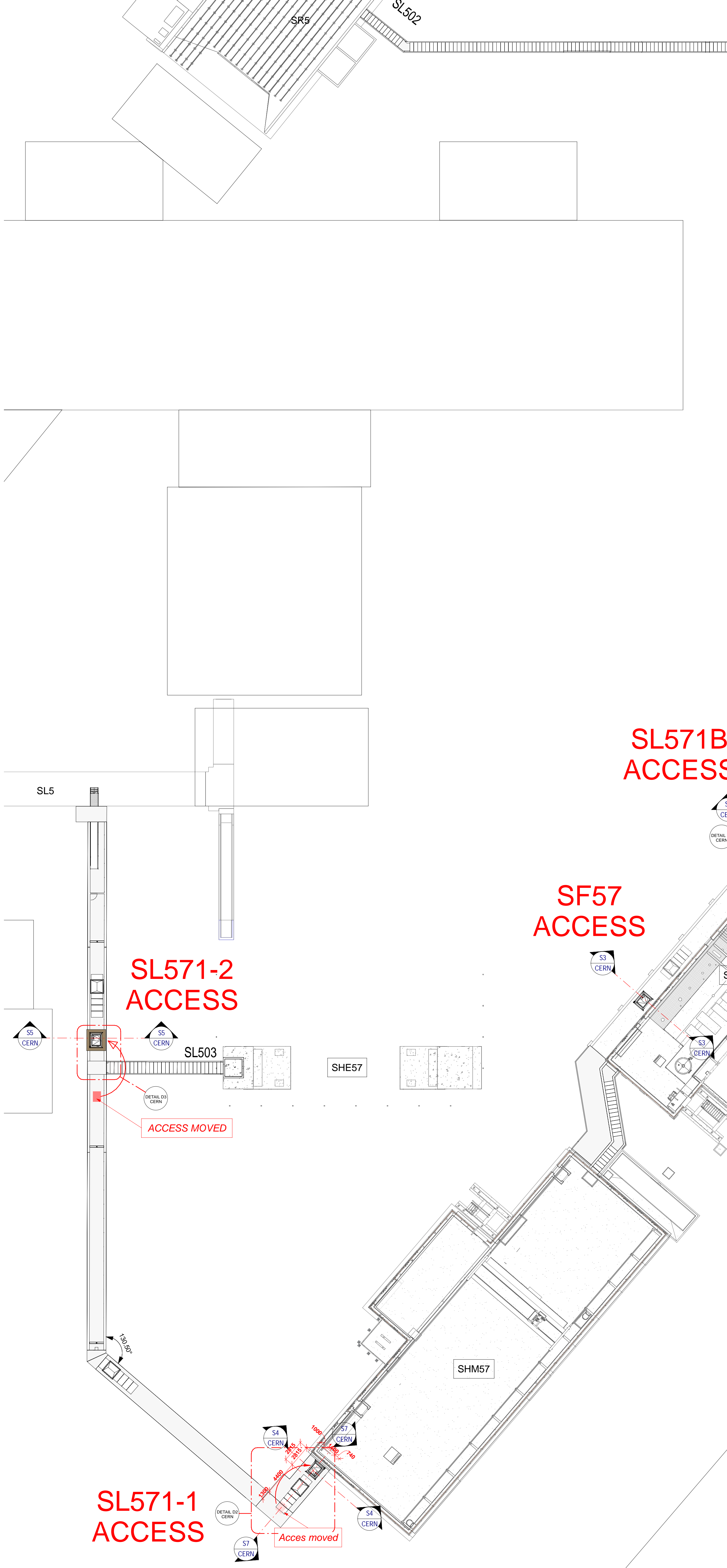
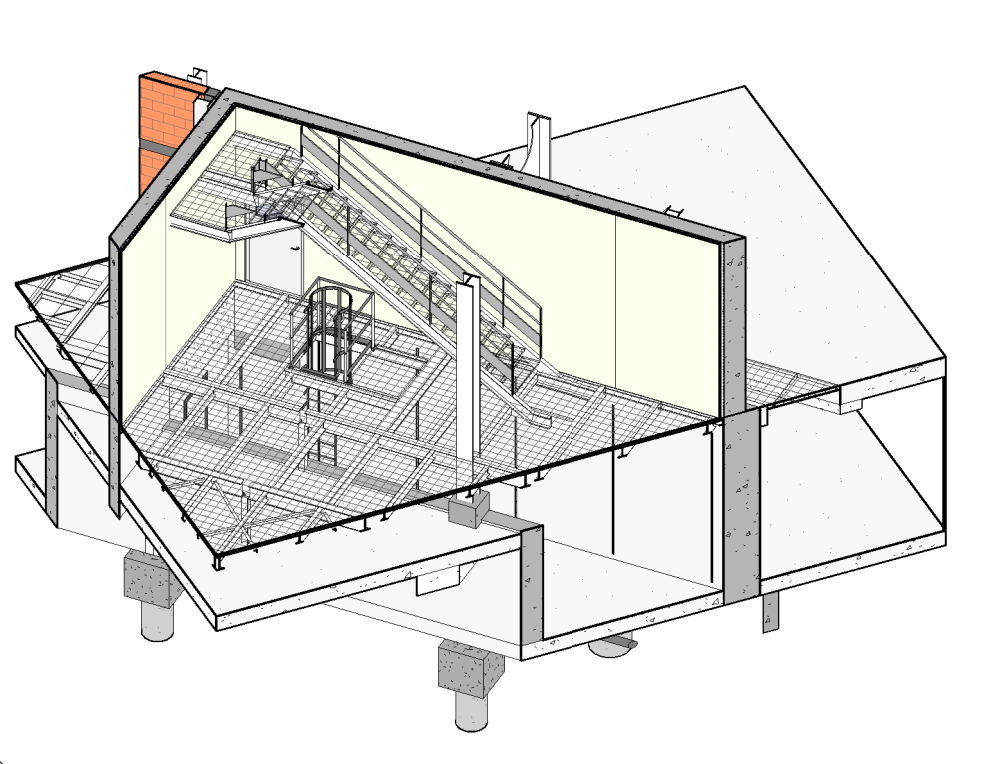


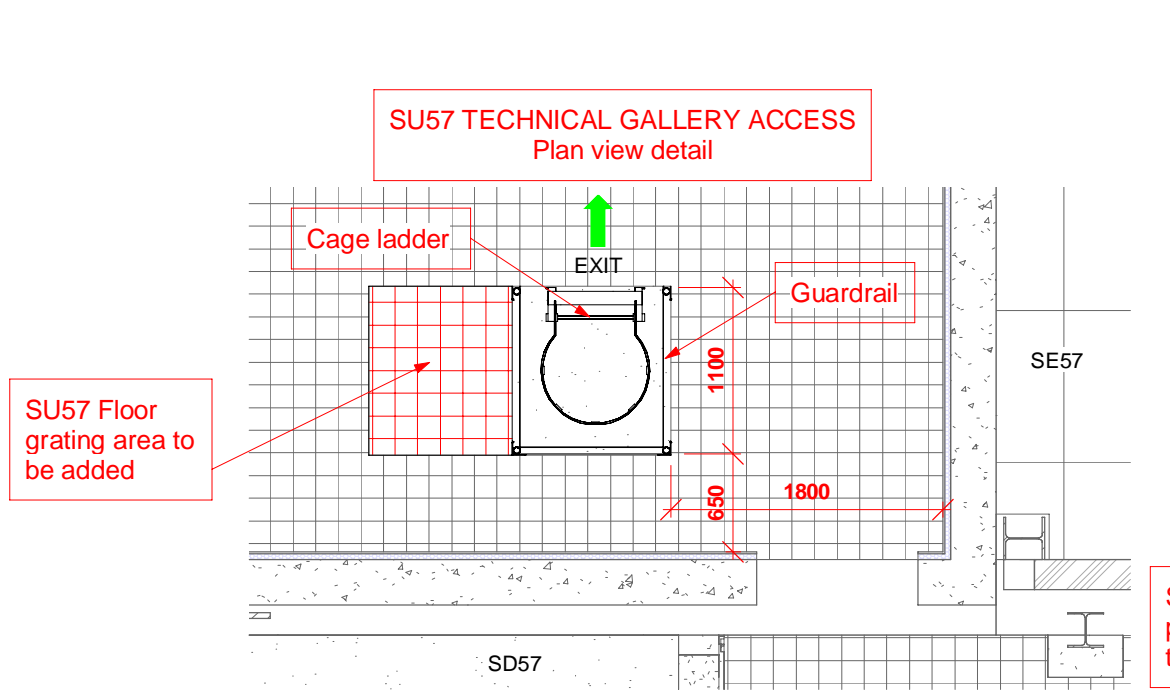
CERN PLAN VIEW Galleries access
1 : 250



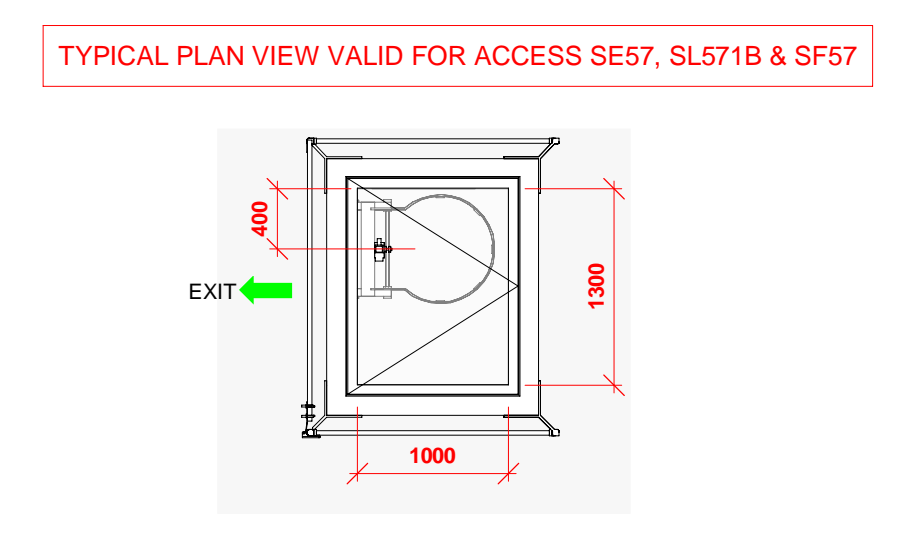
SU57 access - 3D view



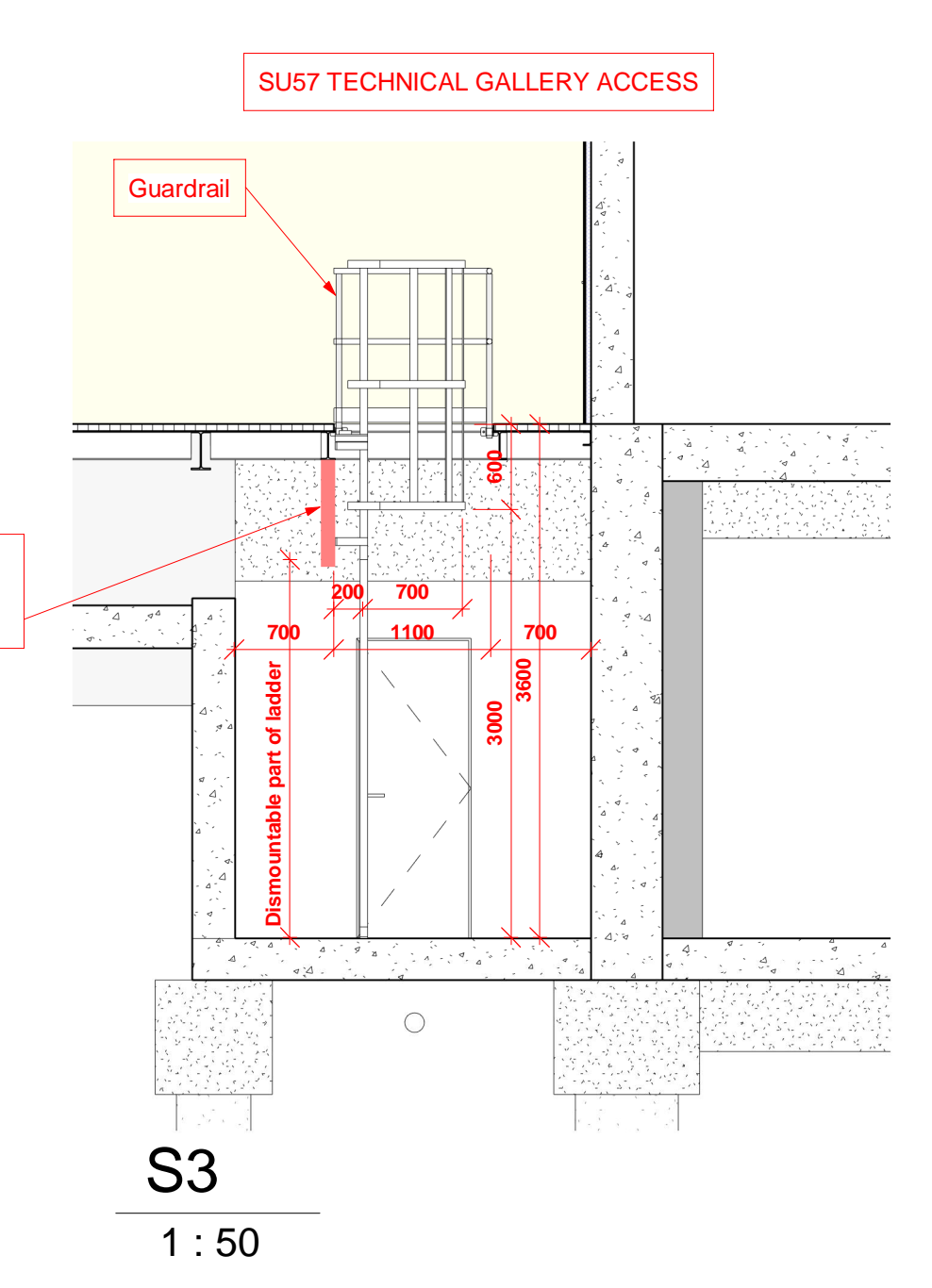
PLAN VIEW - Detail D4
1 : 50



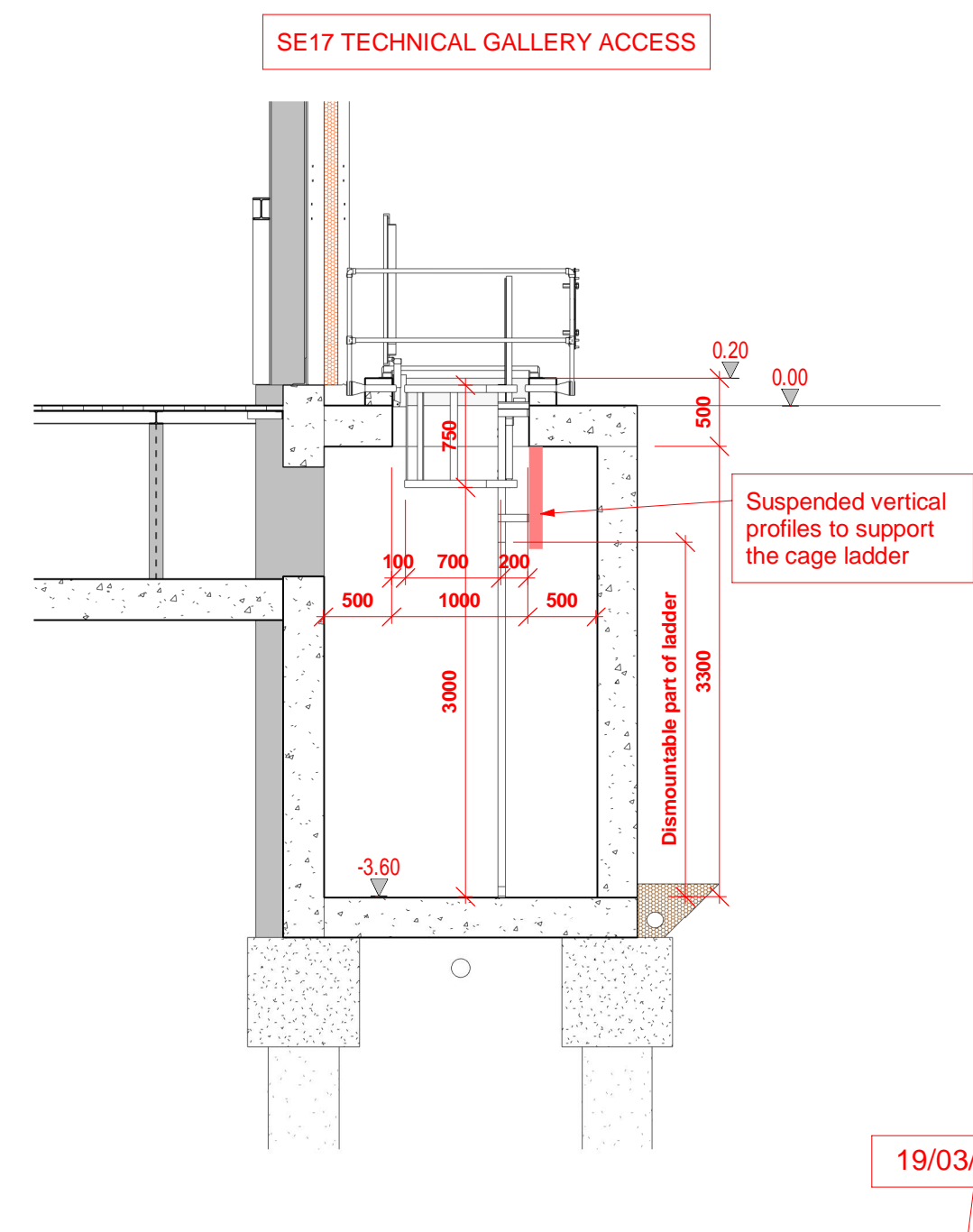
PLAN VIEW - Detail D1
1 : 50



S6
1 : 50



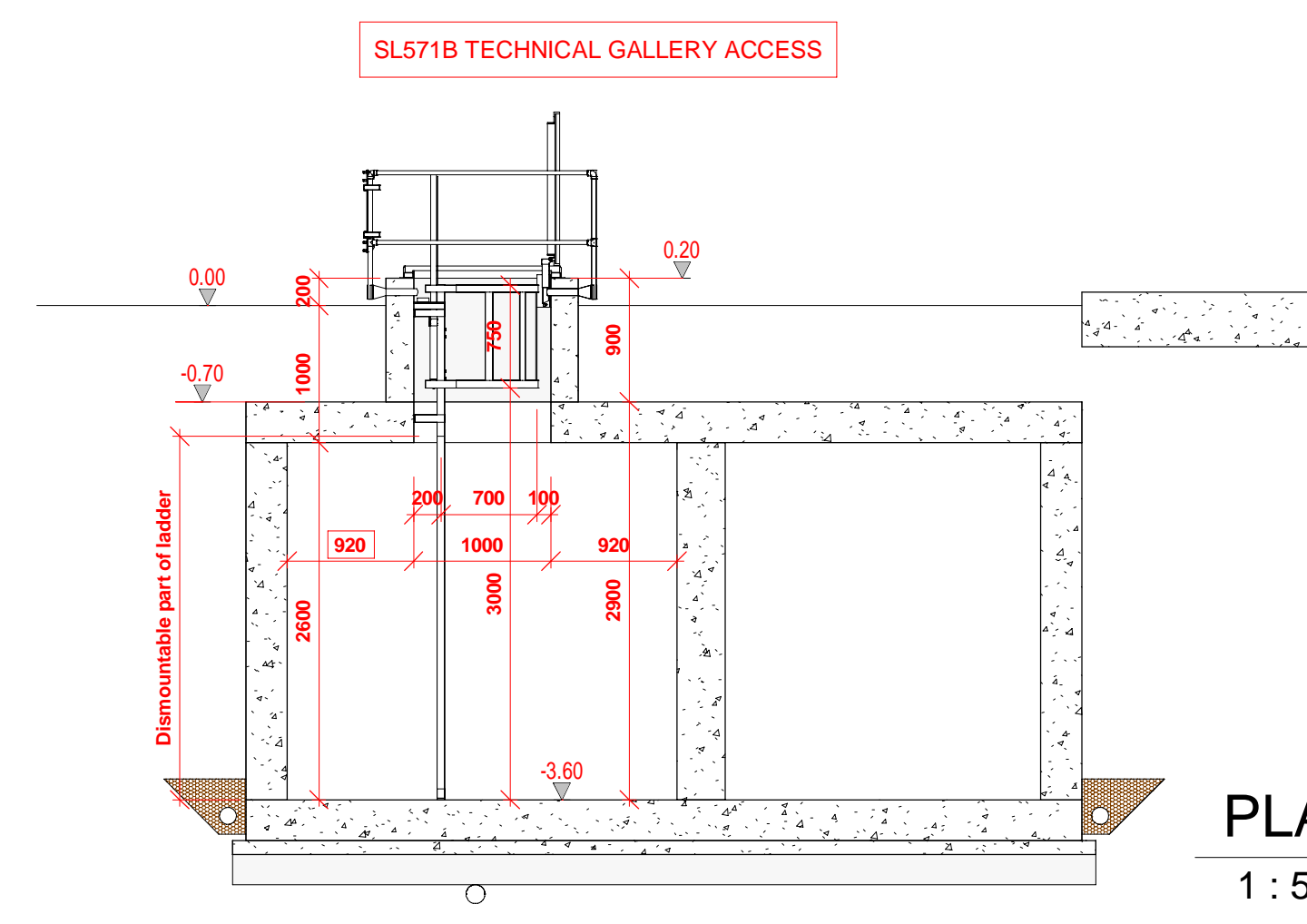
S1
1 : 50



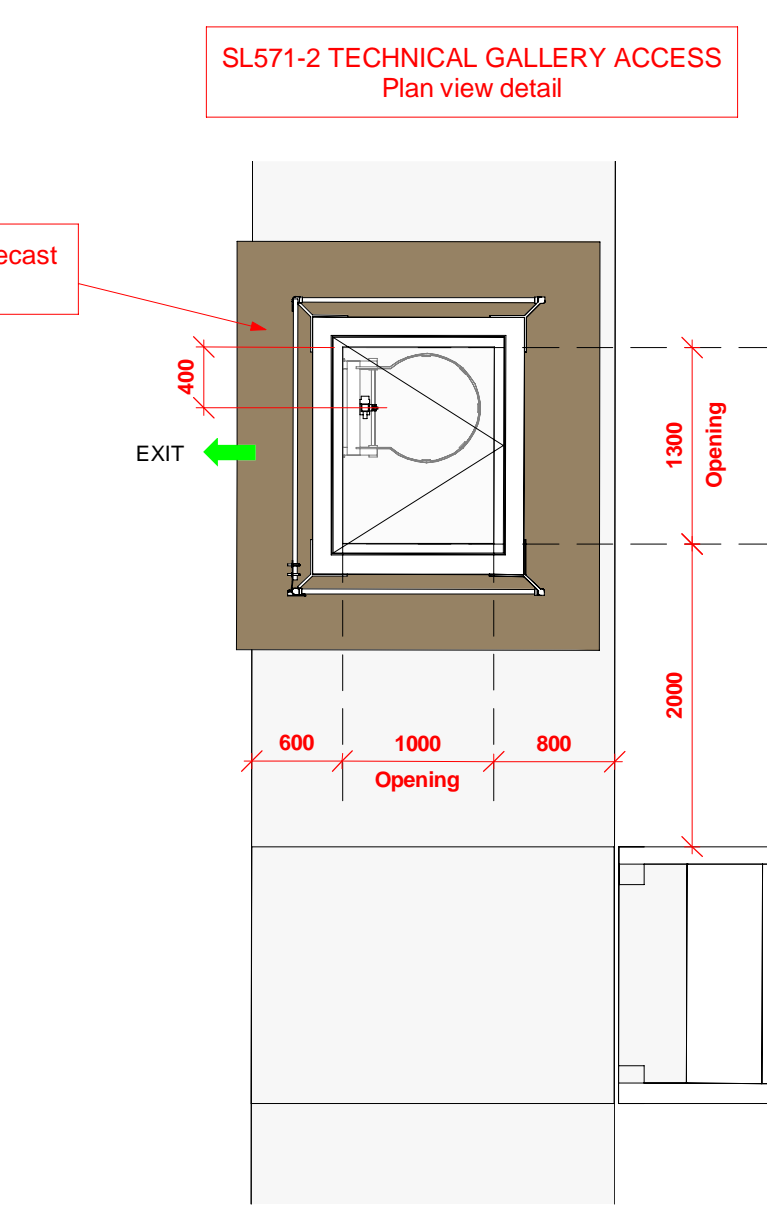
19/03/2020

SE57 ACCESS

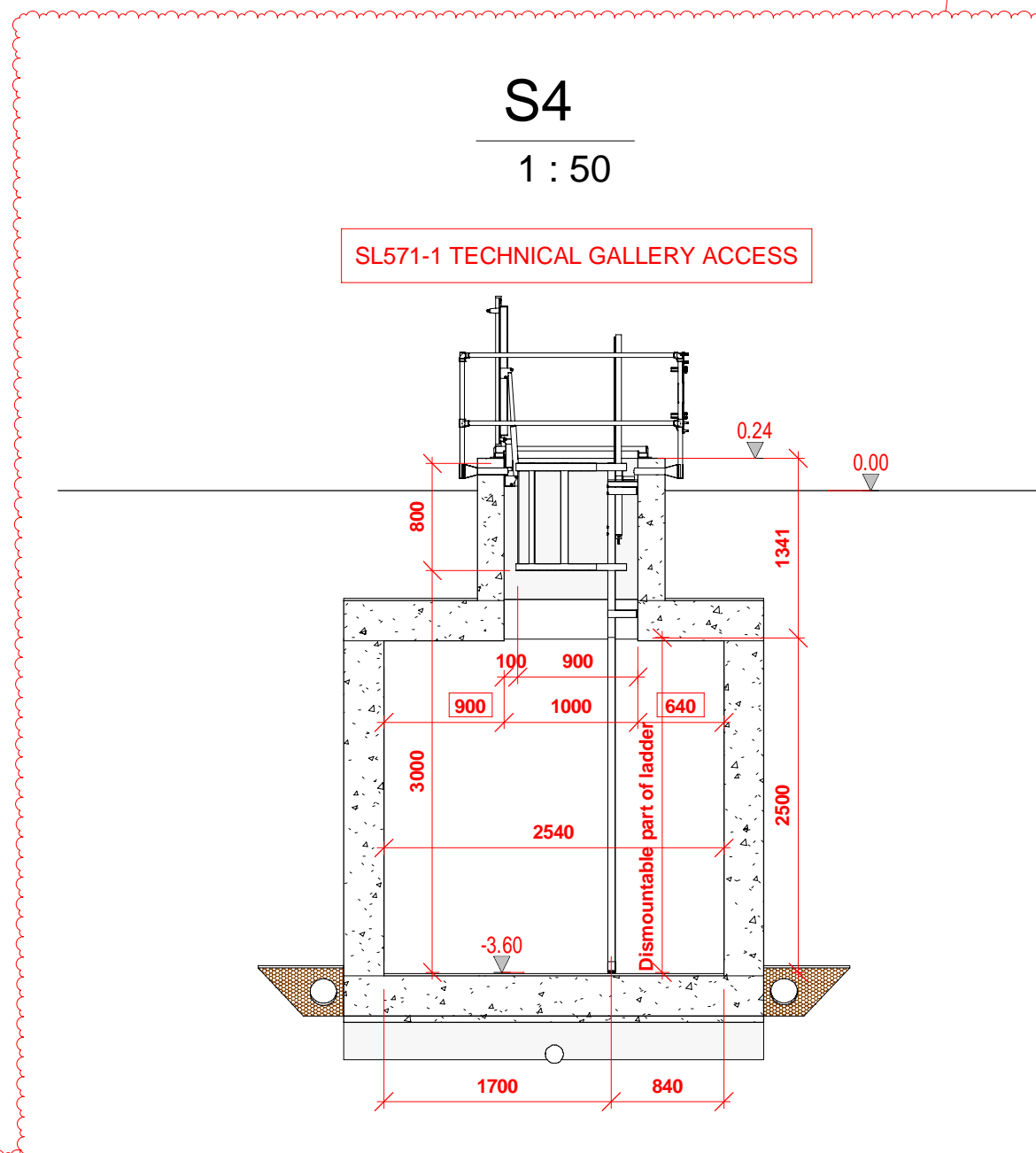
S2
1 : 50



PLAN VIEW - Detail D3
1 : 50



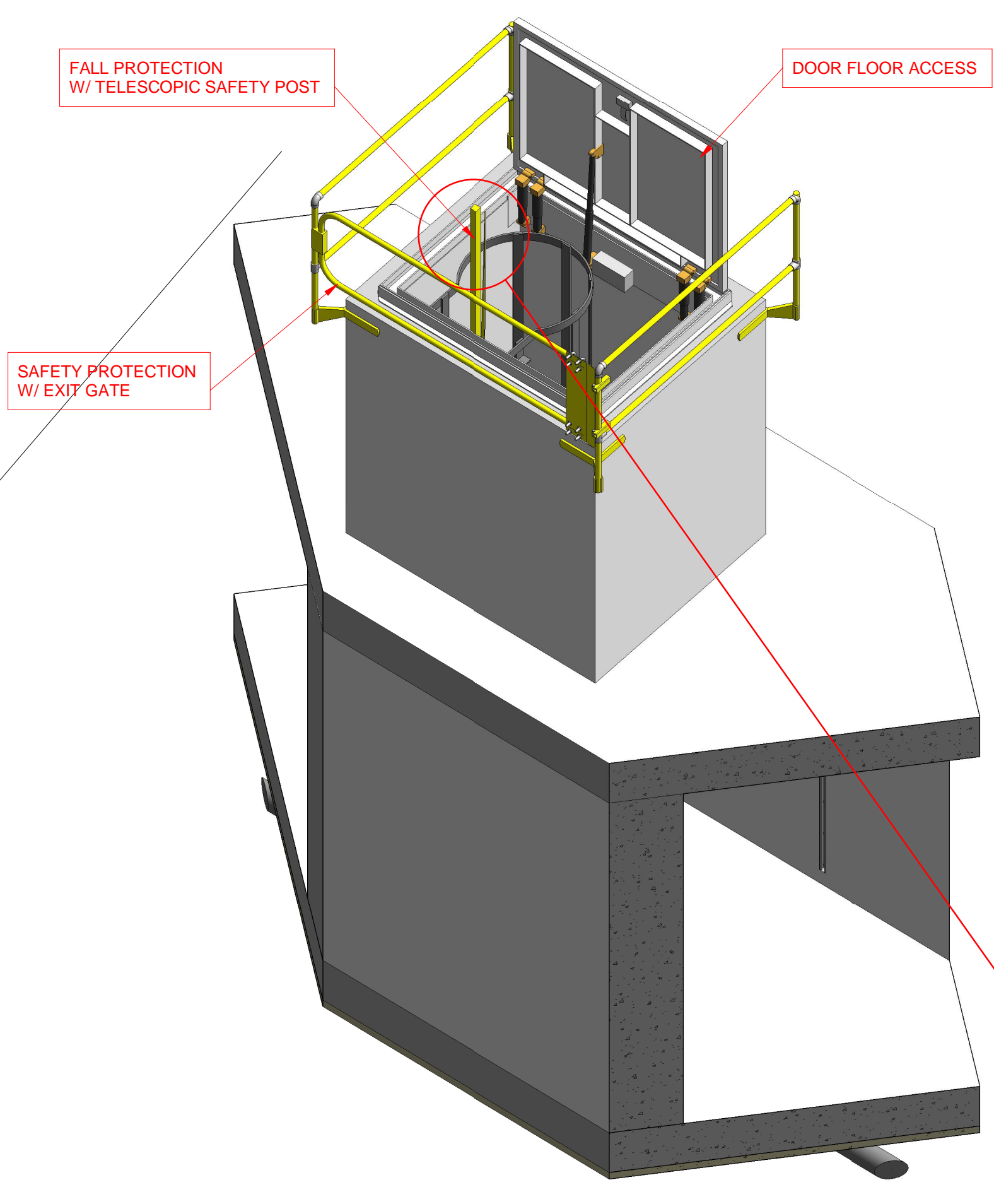
S4
1 : 50



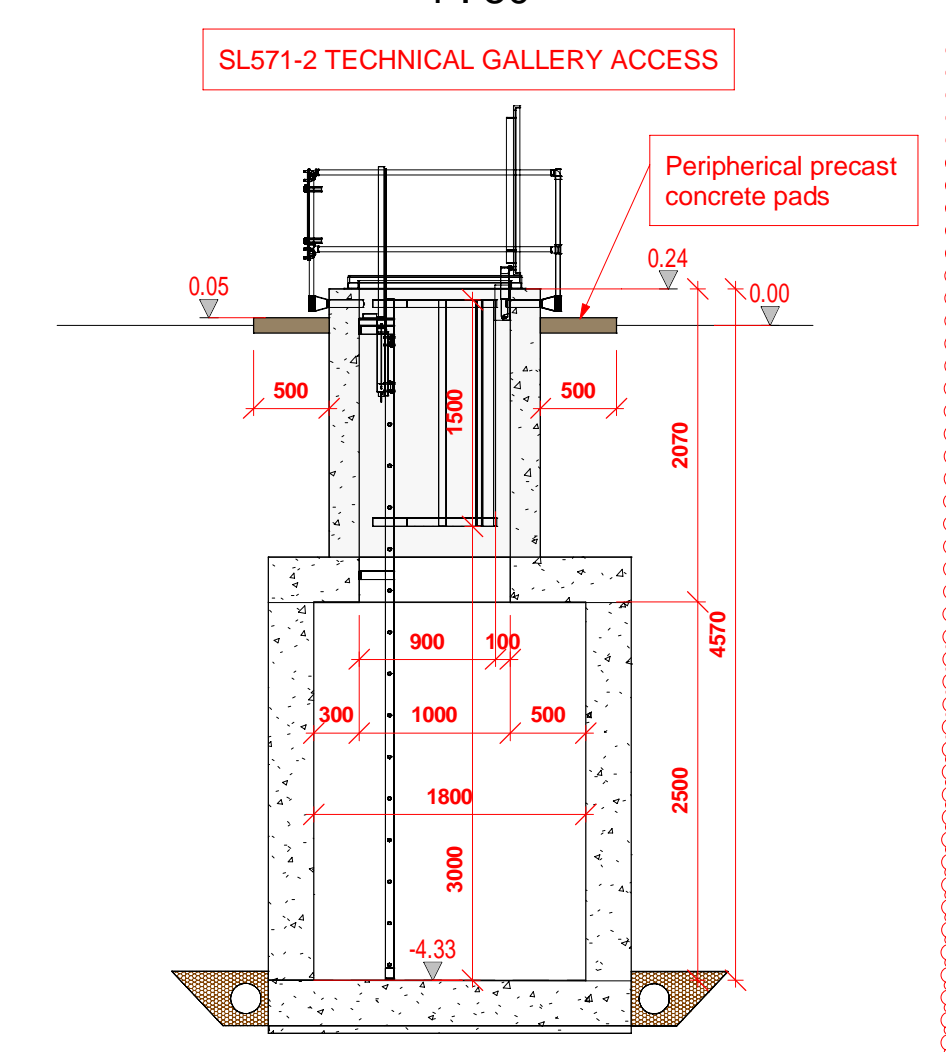
SL571B ACCESS

SF57 ACCESS

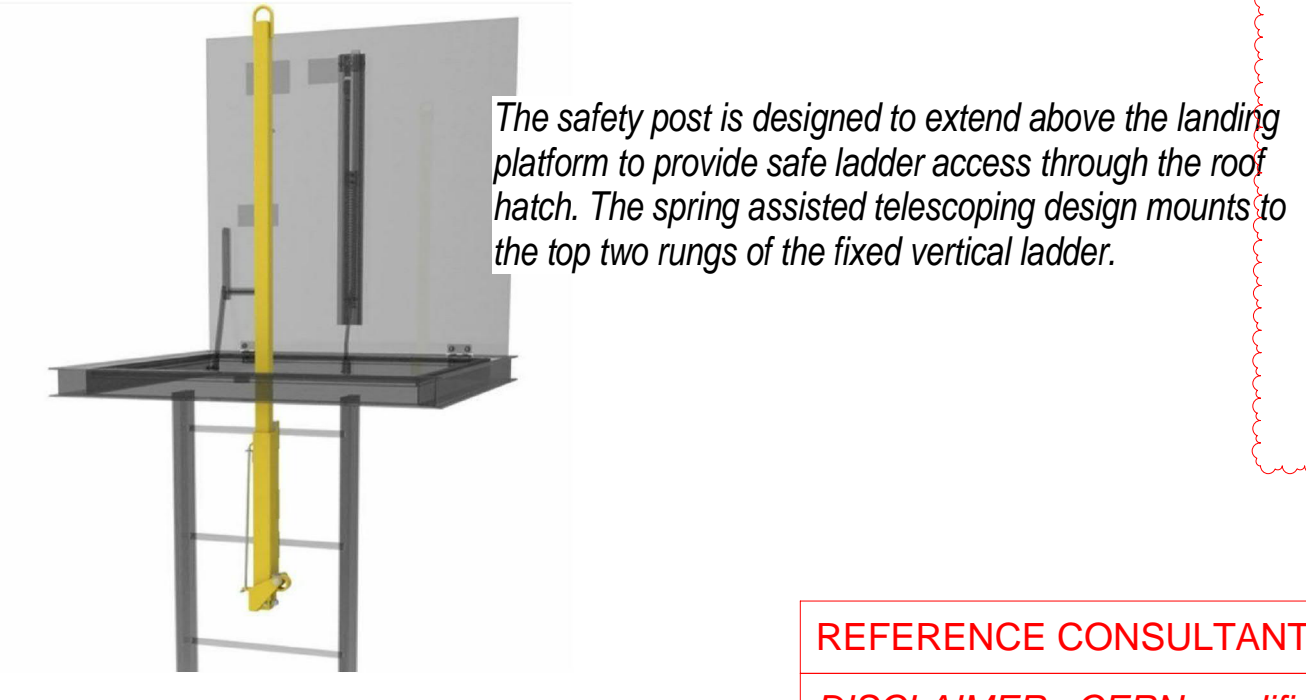
Gallery access - Typical 3D view



S5
1 : 50

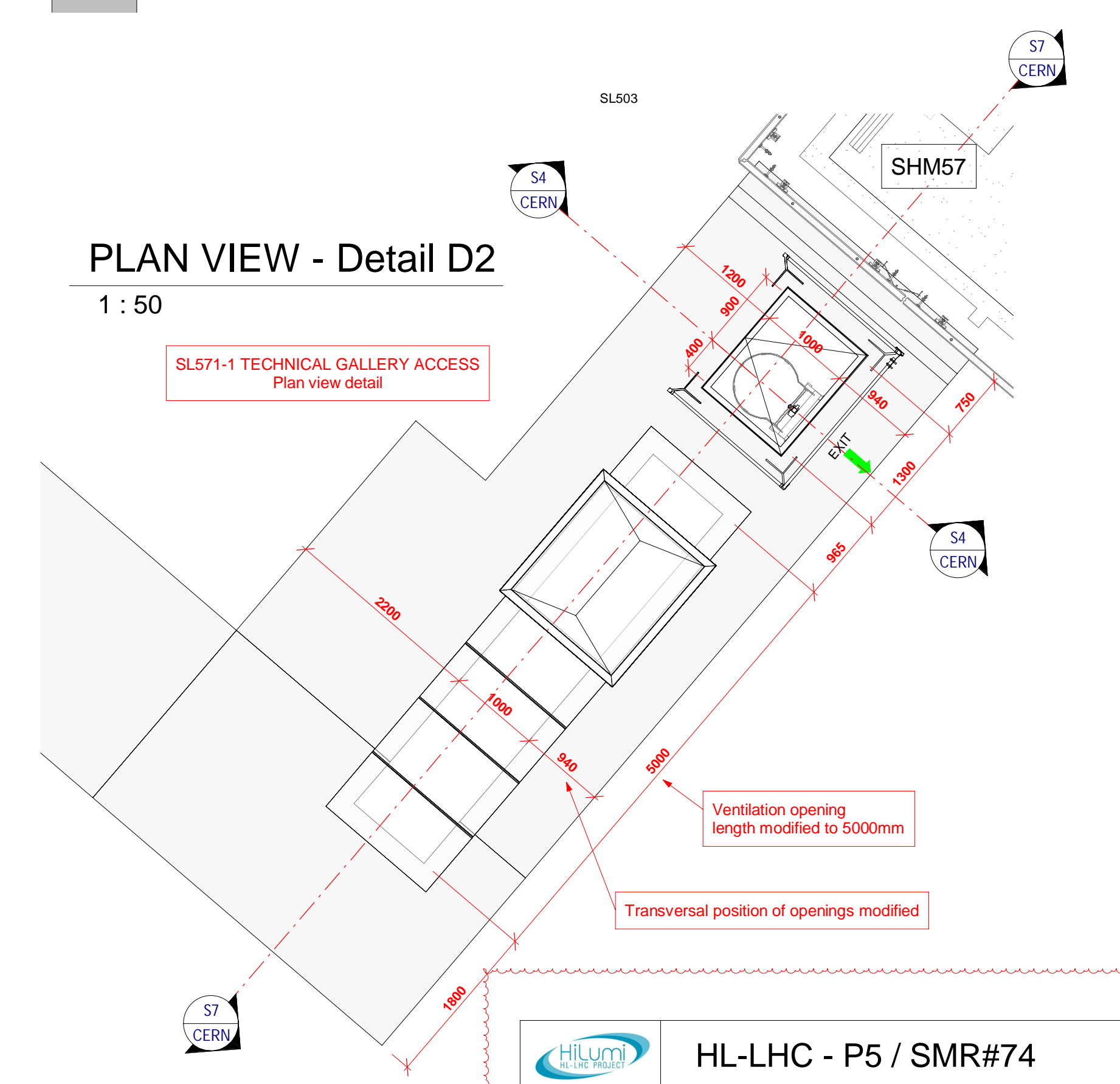


EXAMPLE OF FALL PROTECTION SYSTEM



The safety post is designed to extend above the landing platform to provide safe ladder access through the roof hatch. The spring assisted telescoping design mounts to the top two rungs of the fixed vertical ladder.

PLAN VIEW - Detail D2
1 : 50



NOTE : ALL PRODUCTS & SYSTEMS SHOWN IN THIS DRAWING ARE CERN PROPOSAL. FINAL PRODUCTS WILL BE DEFINED BY CONTRACTOR WITH CERN APPROVAL.

REFERENCE CONSULTANT REVIT MODEL : LOM-B3561REV-V3.A
DISCLAIMER : CERN modifications only reflect the requested geometry and ignore any structural requirements, which are to be defined by the Consultant.

HL-LHC - P5 / SMR#74
SURFACE - SL57
TECHNICAL GALLERIES ACCESS
CERN PROPOSAL
Ludovic Barthélémy
SMB-SE-DOP
Sc : 1/50 - 1/250
V1 - 19/03/2020