

cronologic

www.cronologic.de

cronologic

founders with CERN background

board level TDC products

selling HPTDC boards since 2005



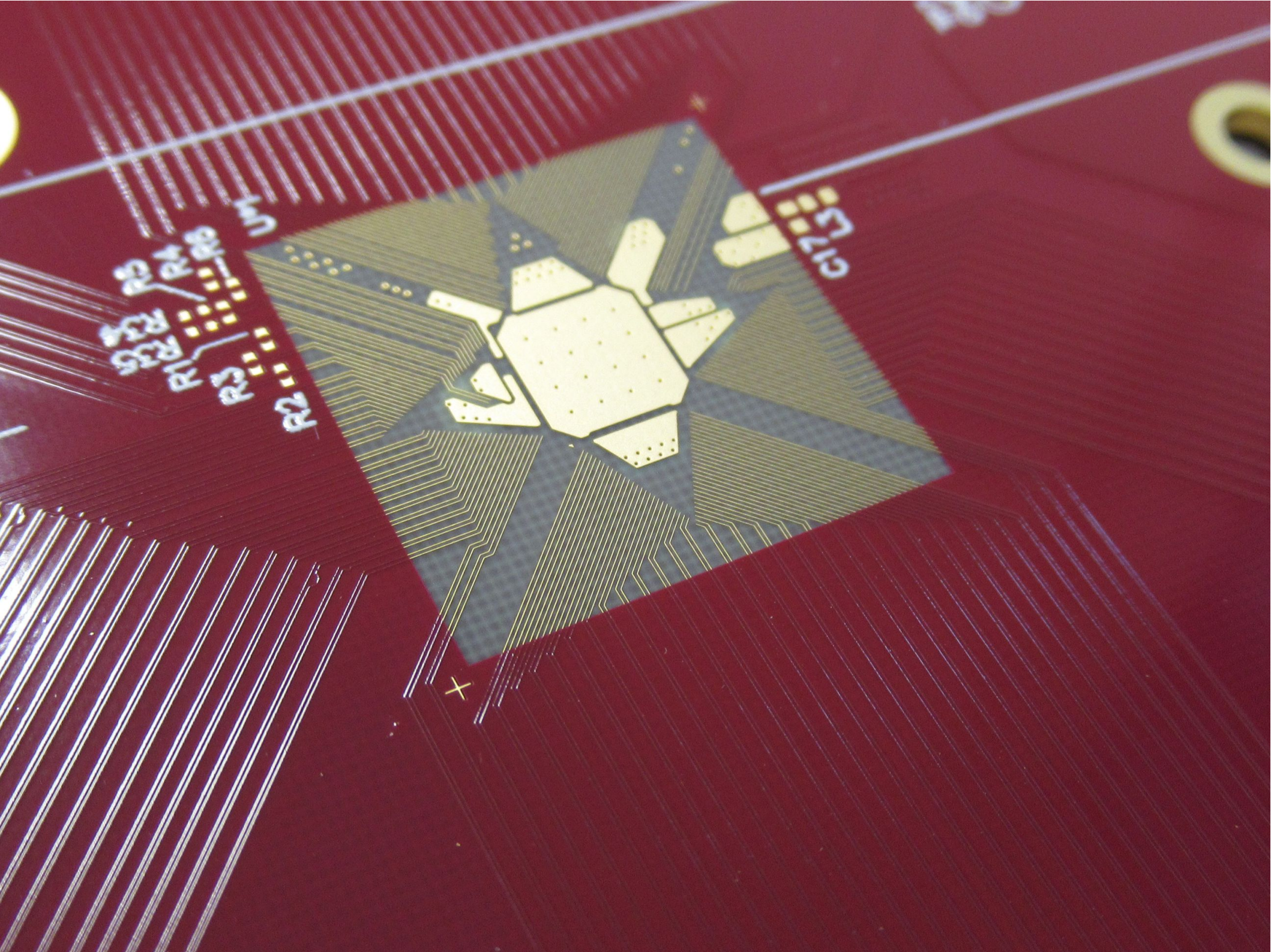
picoTDC board

all input channels connected

Ethernet and USB

will be used to evaluate front end options





R12
R13
R14
R15
R16
R17
R18
R19
R20
R21
R22
R23
R24
R25
R26
R27
R28
R29
R30
R31
R32
R33
R34
R35
R36
R37
R38
R39
R40
R41
R42
R43
R44
R45
R46
R47
R48
R49
R50
R51
R52
R53
R54
R55
R56
R57
R58
R59
R60
R61
R62
R63
R64
R65
R66
R67
R68
R69
R70
R71
R72
R73
R74
R75
R76
R77
R78
R79
R80
R81
R82
R83
R84
R85
R86
R87
R88
R89
R90
R91
R92
R93
R94
R95
R96
R97
R98
R99
R100

C17
C18

+

next steps

- evaluate front end options
- define product

- feature requests welcome
 - kolja@cronologic.de