

# IMPACT & SUSTAINABILITY (WORK PACKAGE 4)

Silvia Vignetti (CSIL)  
Monday, 9 November 2020, 14:30-15:00

*This project has received funding from the European Union's Horizon 2020 research and innovation programme under grant No 951754*

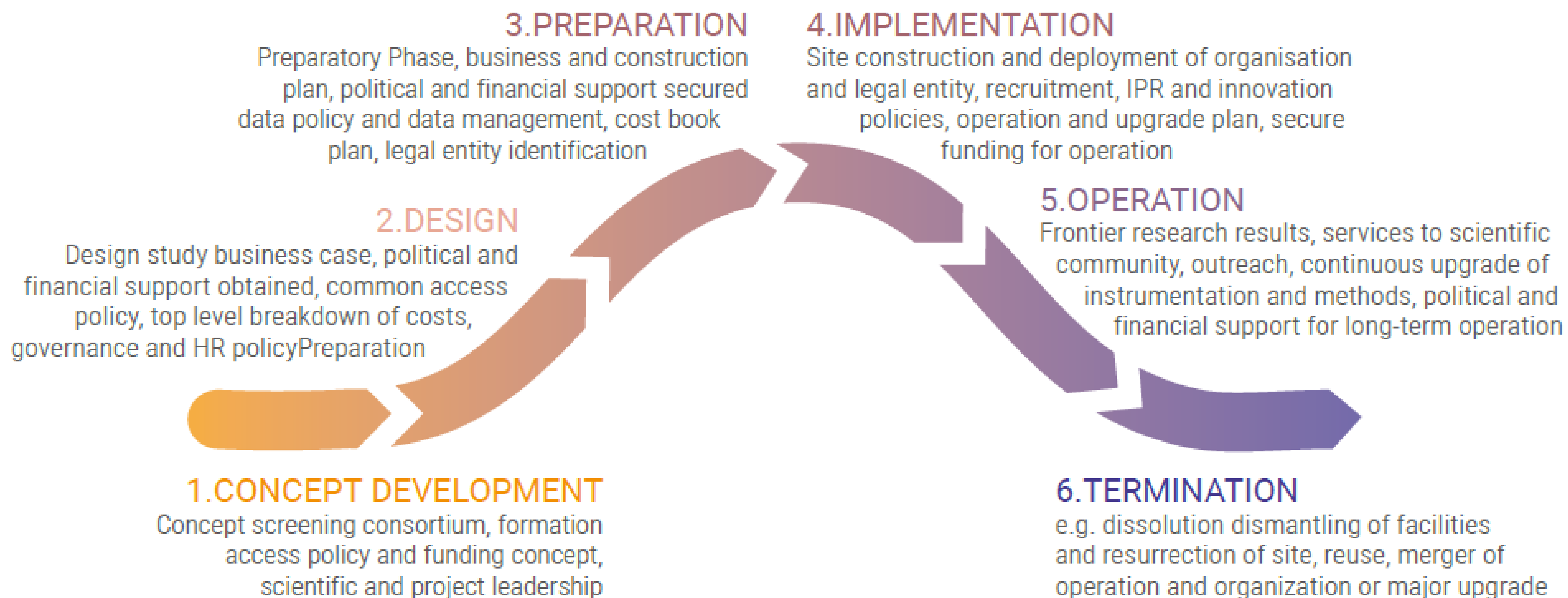
# WP 4 RATIONALE

FCC: a project designed for sustainability.  
eDevelop a project scenario for the implementation of the new research infrastructure that delivers long-term service for a worldwide science community.

***SO5 Demonstrate the role and impact of the research infrastructure in the innovation chain focusing on responsible resource use and managing environmental impacts***

# A LIFECYCLE APPROACH TO IMPACT ASSESSMENT

## Lifecycle of a Research infrastructure



Source: ESFRI

# WHY SUSTAINABILITY IS IMPORTANT

- A condition for **feasibility and responsibility**
- A condition for **acceptance**



# HOW CAN WE ENSURE SUSTAINABILITY?

- **Financial and environmental sustainability**
  - cost effectiveness and resource-responsibility
- **Socio-economic impacts**
  - User community engagement and capacity building



**Economic perspective**

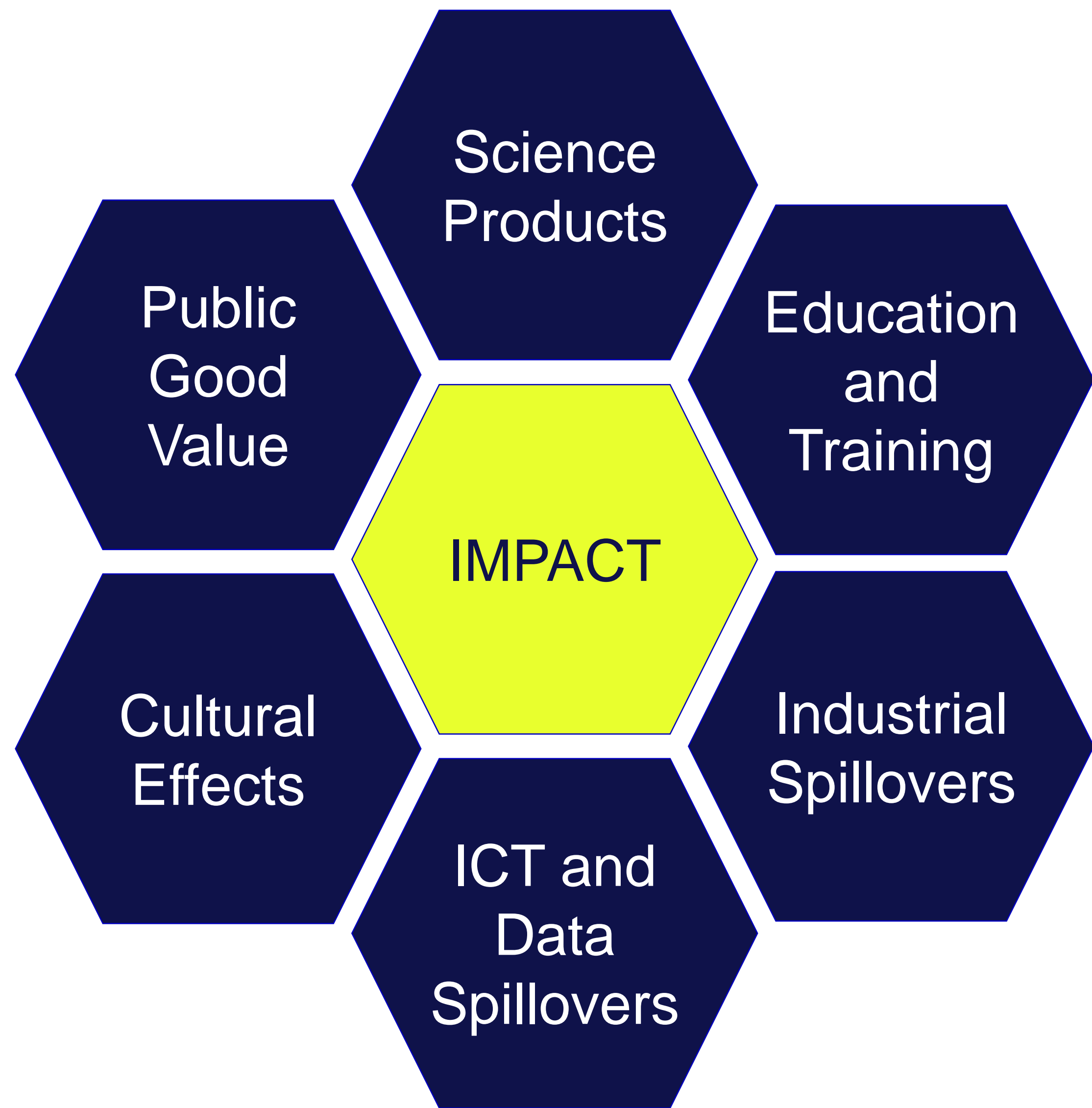
# WP4 IN A NUTSHELL

## • Objectives:

- Develop the financial roadmap of the project
- Estimates of ranges and likelihoods of different impact
- Formulate recommendations for cost-effective and sustainable infrastructure

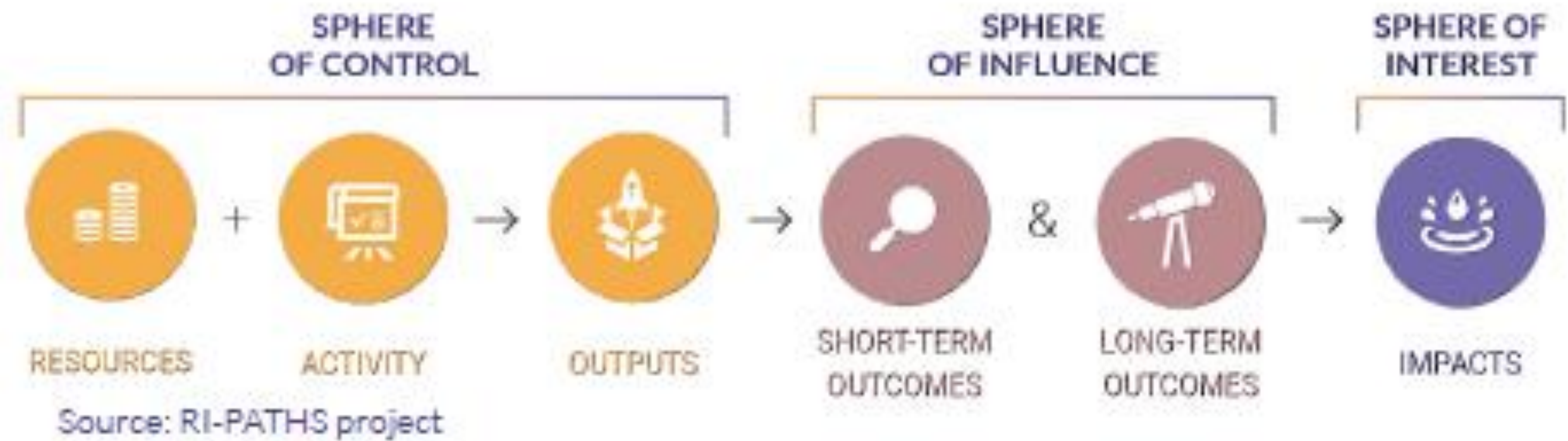
Tasks	Leader and participants	Deliverable
4.1 – Coordination	<a href="#">CSIL</a> , CERN	
4.2 – Cost estimates	<a href="#">CERN</a> , <a href="#">CSIL</a>	(D4.4)
4.3 – Socio-economic impact analysis	<a href="#">CSIL</a> , CERN, SN, USC	<b>D4.1:</b> Plan for research infrastructure socio-economic impact analysis (M10) <b>D4.3:</b> Socio-economic impacts of the lepton collider-based research infrastructure (M36)
4.4 – Regional and territorial benefit potential identification	<a href="#">CNRS</a> , Cerema, CETU, CERN, <a href="#">CSIL</a> (+ partners BINP, DOE, EdG and DRRT-AuRA)	<b>D4.2:</b> Regional benefits and territorial development opportunities in a global project (M28)
4.5 – Implementation, financing and in-kind contribution strategy	<a href="#">CERN</a> , <a href="#">CSIL</a>	<b>D4.4:</b> Implementation, financing and in-kind contribution strategy (M39)

# SOCIO-ECONOMIC IMPACT PATHWAYS



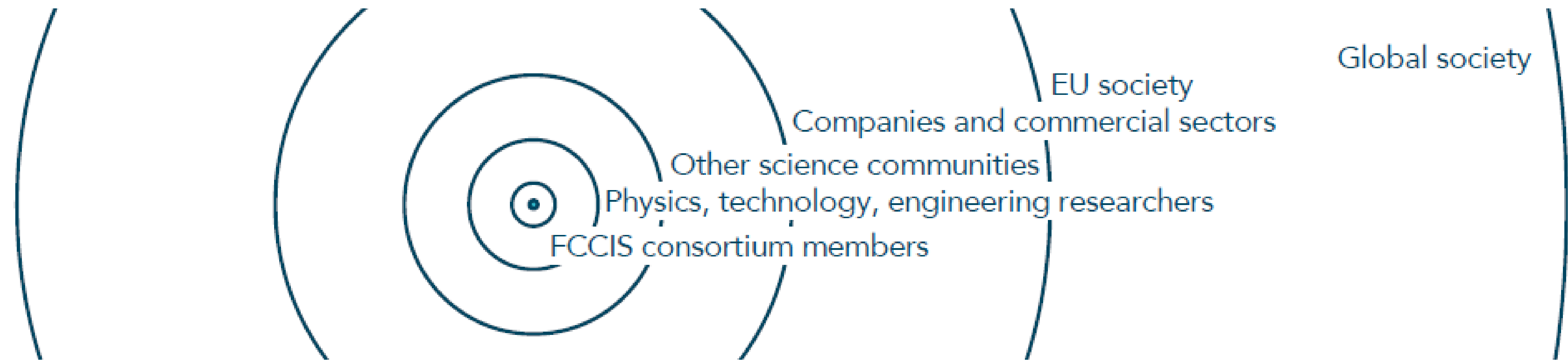


# IMPACT PATHWAY LOGIC





# ENGAGING USERS COMMUNITIES



*Figure 17: Exploitation of project results following the impact wave model.*

# MAXIMISING VALUE FOR SOCIETY

- Cultural benefits
- Communication strategy
- Non-use value



*“To recognize that the public sector creates value we must first find ways to assess that value including the spill-overs.”*

(M. Mazzucato)

# THANK YOU

Silvia Vignetti  
[vignetti@csilmilano.com](mailto:vignetti@csilmilano.com)