

INTEGRATION OF FCC ACTIVITIES WITH FRENCH AUTHORITIES

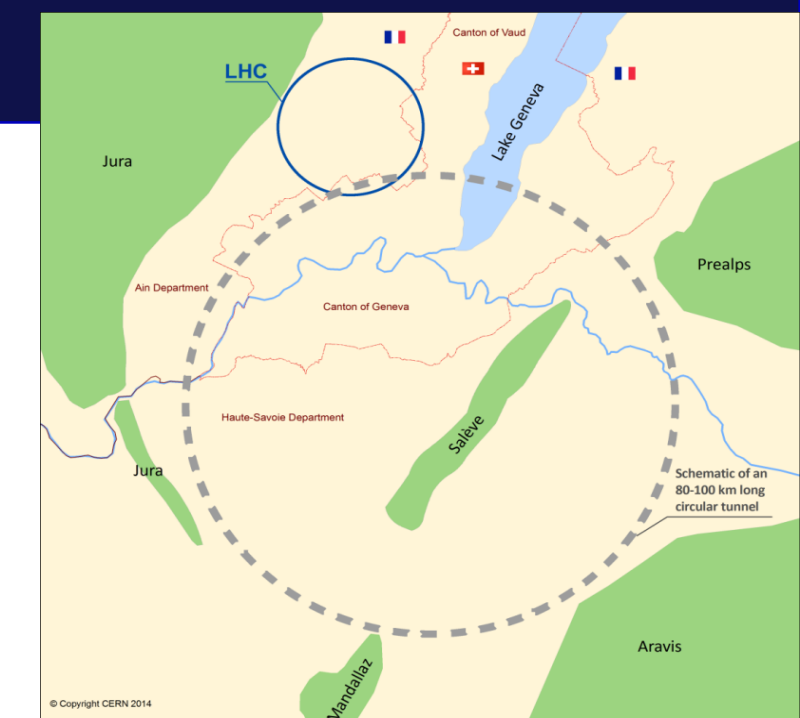
Amandine BIBET-CHEVALIER (Cerema)

2020-11-11, 11h10-11h30

Content

- 1. Background and challenges**
- 2. Activities with French authorities' scope**
- 3. FCC implantation in France and its challenges**
- 4. Administrative processes**
- 5. Conclusion**

Background and challenges



CERN in France : background

France : a host state of CERN's infrastructures

- Meyrin site (Saint-Genis-Pouilly)
- Prévessin-Moëns site
- SPS
- LHC and 6 of its surface areas

A host state status implying that France has to facilitate the organization's activities on its territory

FCC in France : challenges

FCC : a feasibility study to be delivered by 2025 including many challenges :

- Technical aspects
- Implantations aspects
- **Administrative aspects and local authorities**
- **Acceptability** : 90-100 km tunnel, surface areas in Ain AND Haute-Savoie

A feasibility study implying to work hand in hand CERN/France to provide the main conclusions allowing a decision to be taken to the next European strategy update

→ One particular challenge for France : administrative process to anticipate to allow the start of CE project by 2030

Activities with French authorities' scope

Many studies since 2016

Main objectives :

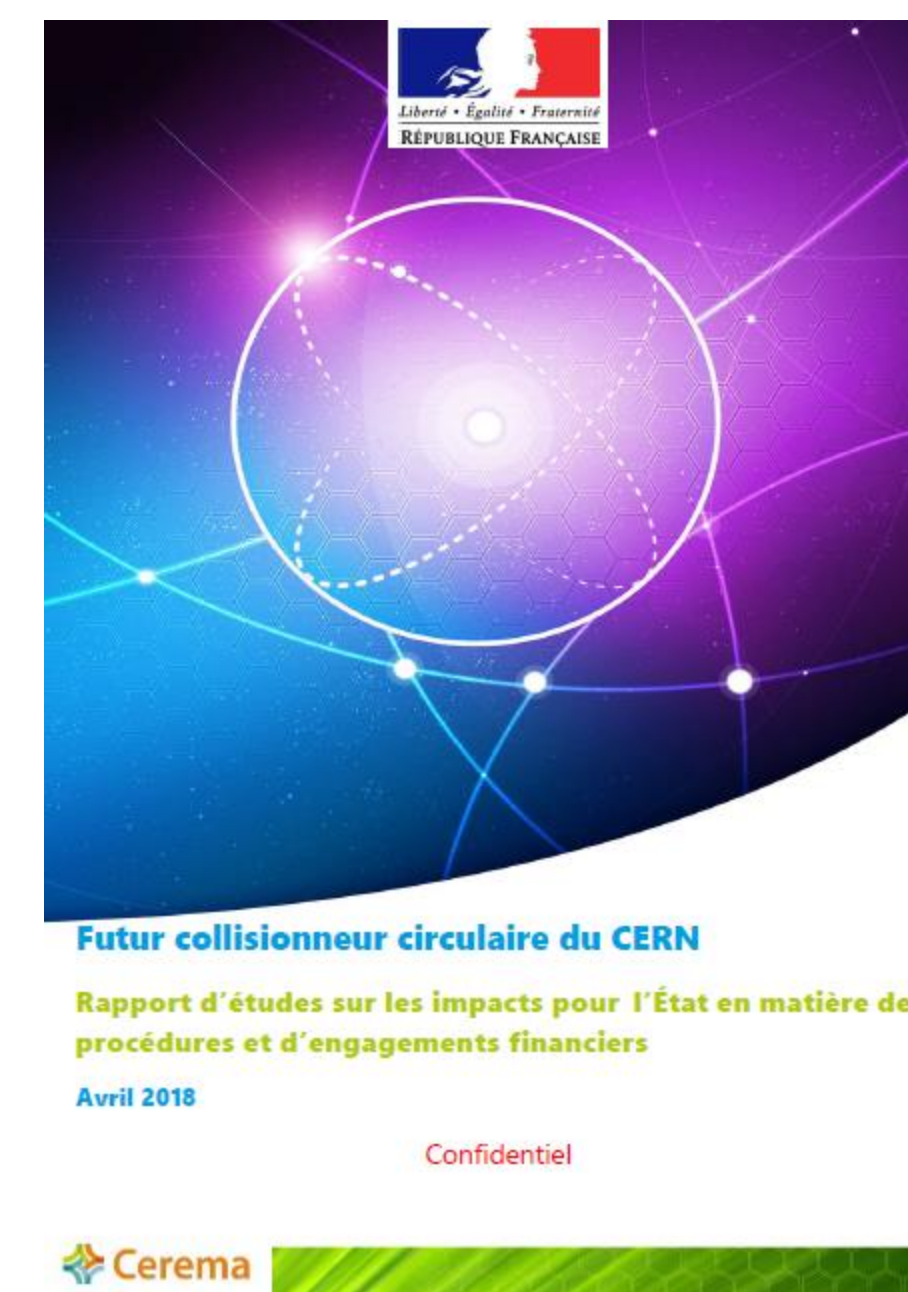
1. Regular report to French authorities
2. Organise work with competent state services in order to anticipate the tasks to be carried out by France

A report to French authorities, written with the collaboration of CERN, on :

1. CERN and FCC
2. Technical aspects of FCC (tunnel, surface sites, area of implantation)
3. Organizational elements of FCC (schedule and procedures)
4. Financial impacts for France

A roadmap from the *Préfet de region* to the competent state services (Cerema, CETU, Dreal, DDTs) to complete studies in collaboration with CERN on :

1. The schedule
2. The implantation (WP3)
3. All aspects linked to a surface site (implantation, size, landscape and architecture, facilities linked to FCC ...) (WP3 and 4)
4. Project's scope concerned by the environmental impact study (WP3)

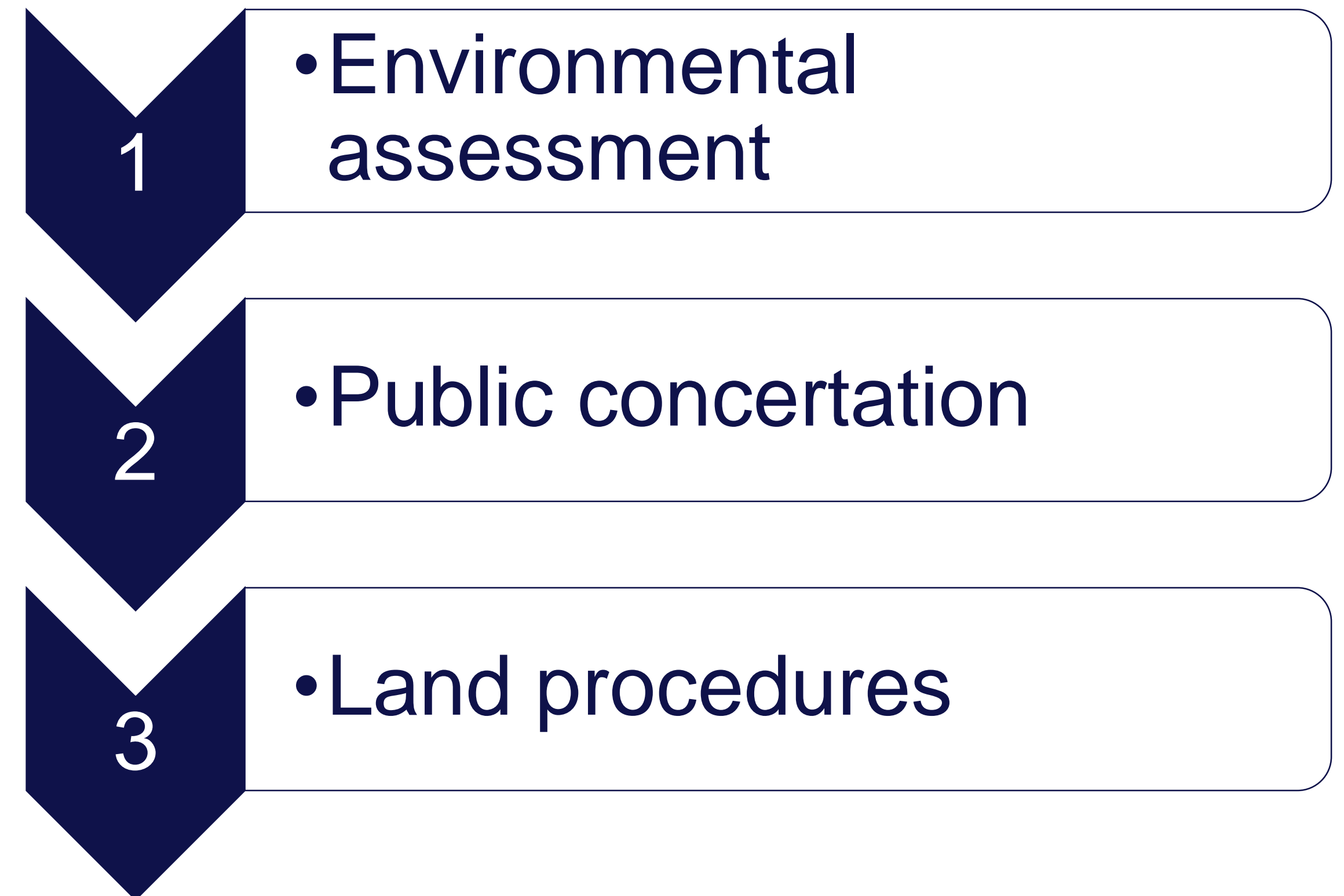


FCC implantation in France and its challenges

FCC's scope

- Tunnel
- Surface sites to integrate
- Facilities directly linked to the infrastructure :
 - Roads and accesses
 - Networks : electricity, water...
- Facilities indirectly linked to the infrastructure :
 - Accommodations
 - Public infrastructures
- Excavated materials (MATEX)

Administrative processes to allow a start of construction



Administrative processes

Environmental assessment

Key points

2 dimensions :

- mandatory to obtain authorizations
- a method to improve the project

3 main principles :

- avoid
- reduce
- compensate

3 main steps in the process :

- impact study report
- submission to authorities and public consultations
- decision of the competent authority

Common works CERN/France

2 main challenges :

- define the project's scope
- define who is responsible for each sub-project

A first step developed in the WP3 framework : **project of an integrated environmental evaluation plan** submitted to the French authorities (*Préfecture de région Auvergne-Rhône-Alpes*)

A first contact taken by *Préfecture de région Auvergne-Rhône-Alpes* with the Ministry of Environment for a **methodological support**

Administrative processes

Public concertation

Key points and common works CERN/France

A principle: inform and take into account the citizens' point of view on major development project. It is mandatory for all projects > 300M€.

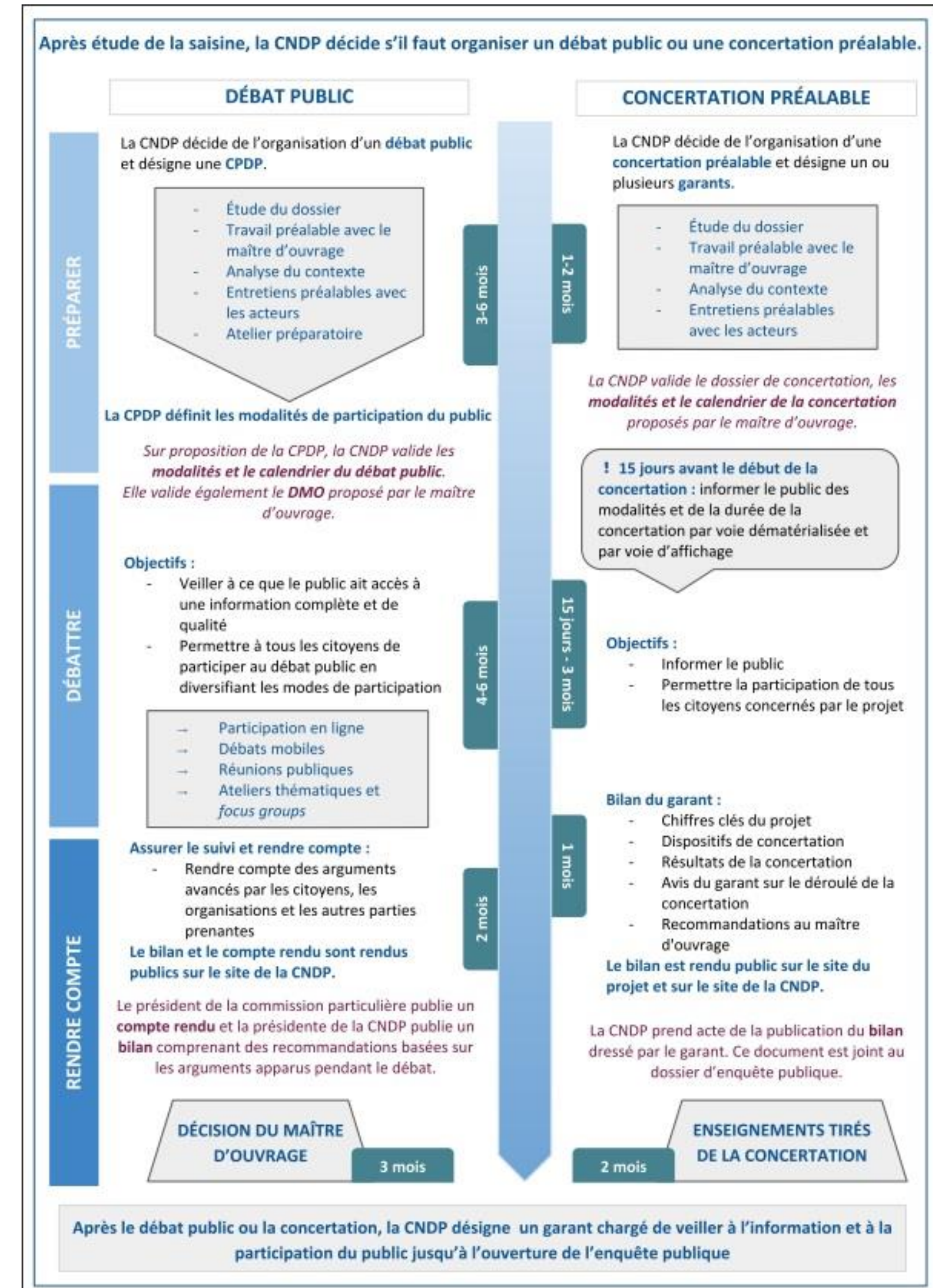
2 stages:

- Communication
- Public debate

An independent administrative authority dedicated:
Commission Nationale du Débat Public (CNDP)

Prerequisites:

- Refined work on surface sites implantation (WP3)
- Well advanced environmental assessment (WP3)
- Common communication strategy on FCC, in particular **the elements favouring the acceptability of FCC** (WP4)



Administrative processes

Land procedures

Key points

Assumption: analysis based on **common law** procedures

1. Administrative phase :
 - public inquiries (*enquête parcellaire* + *enquêtes publiques*)
 - **Déclaration d'Utilité Publique (DUP) : decision (décret) declaring the project to be in the public interest and allowing the French State to expropriate.**
2. Expropriation phase : surface + underground

Possible delays due to legal actions on expropriation

Other scenario to be explored (*procédure unique, opération d'intérêt national, projet d'intérêt général*)

Common works CERN/France

1. **optimization** of surface sites of FCC (WP3)
2. identification of surface needed for **facilities** directly or indirectly linked to the infrastructure, and for MATEX
3. a **GO decision of next ESPPU** needed for the DUP
4. **communication** with local authorities to integrate the project in urbanism documents



Conclusion

- **Many challenges to address in the framework of FCC activities in host state France:**
 - **in terms of schedule** : a GO/NO GO decision after the next European strategy update for a start of construction at the beginning of the 2030's that implies to **anticipate** the administrative procedures in France to make available the land
 - **in terms of acceptability** : to facilitate the sequence of the procedures in France and a good integration of FCC on its territory
- **An ambition of excellence for FCC shared by CERN and France through the feasibility studies implying:**
 - a **common work** CERN/France to understand each other issues
 - a **dedicated** organisation through working group



THANK YOU !
ANY QUESTIONS ?

*This project has received funding from the European Union's Horizon 2020 research and innovative programme under grant No 951754.
The information herein only reflects the views of ist author and the European Commission is not responsible for any use that may be made of the information.*