

# SPS schedule update

*LIU-SPS Coordination Meeting, 3<sup>rd</sup> June 2020*

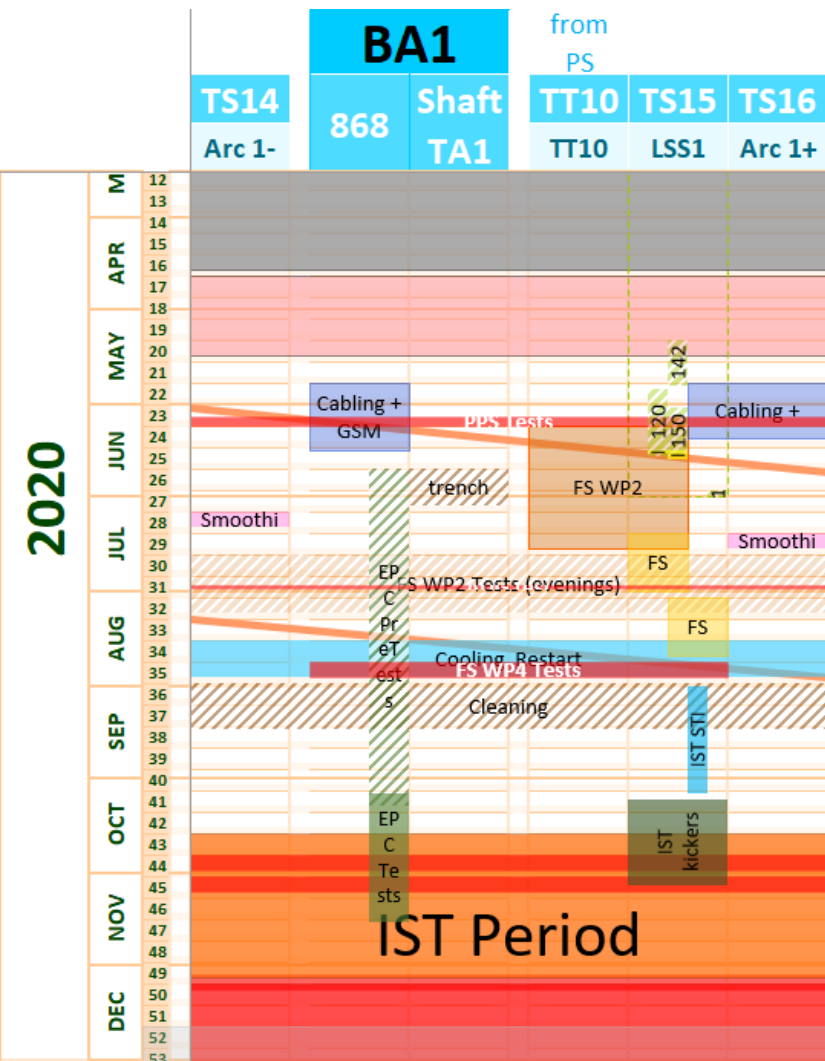
**David MCFARLANE EN-ACE-OSS**

*Participation: J. Coupard, J. Meignan, A. Grande,*



ENGINEERING  
DEPARTMENT

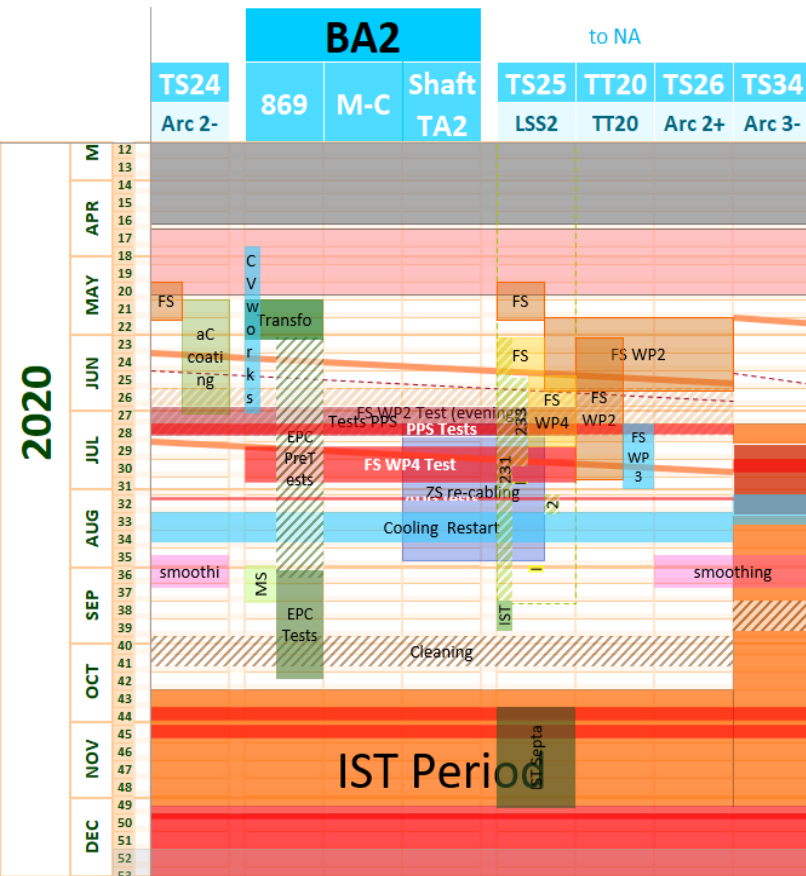
# SPS 1: Works Scheduled W23 & 24



## BA1

- AUG test, 1 day, Proposed date **30/07/2020**.
- Fire doors installation? **08/06/2020**?
- Re-install. of MBIV.1003's transformers: (Pb discovers during pre-test mid Feb) **scheduled for 15/06** during 2 weeks
- PPS tests **from 02/06**: no access restrictions as decided before COVID?
- FS WP2 installation **from 08/06** for 6 weeks in LSS1/ Arc1-

# SPS 2: Works Scheduled W23 & 24



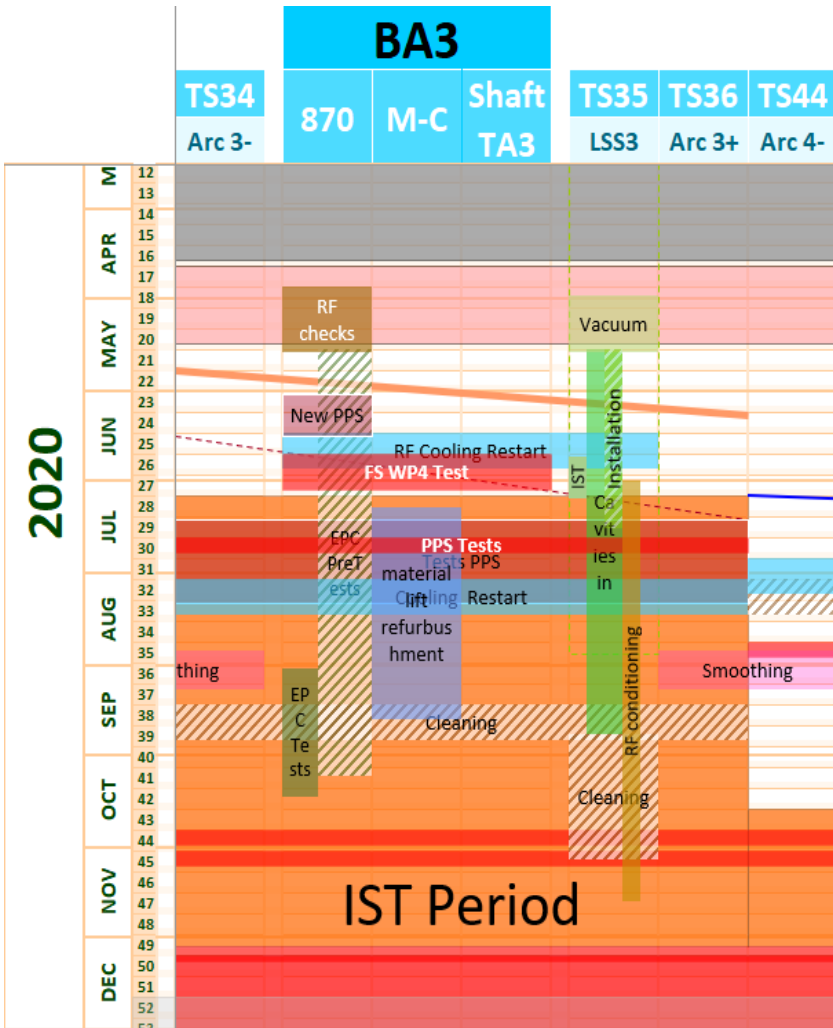
## BA2: surface:

- Construction du bassin de rétention BR2
- Travaux CV BA2 (local EG CV)
- Oil Transformer maintenance
- MACAOs - End of installation + pre-test

## • Underground:

- Install Fire doors TA, LSS-/+ & TT20
- Ac (IR) Coating Project Arc2-
  - Re-installing Magnets W23
- FS WP2
  - Installing equipment in LSS2+ /Arc 2+
- FS WP4
  - Installing equipment in LSS2-
  - **LSS2 blocked for transport W24**

# SPS 3: Works Scheduled W23 & 24



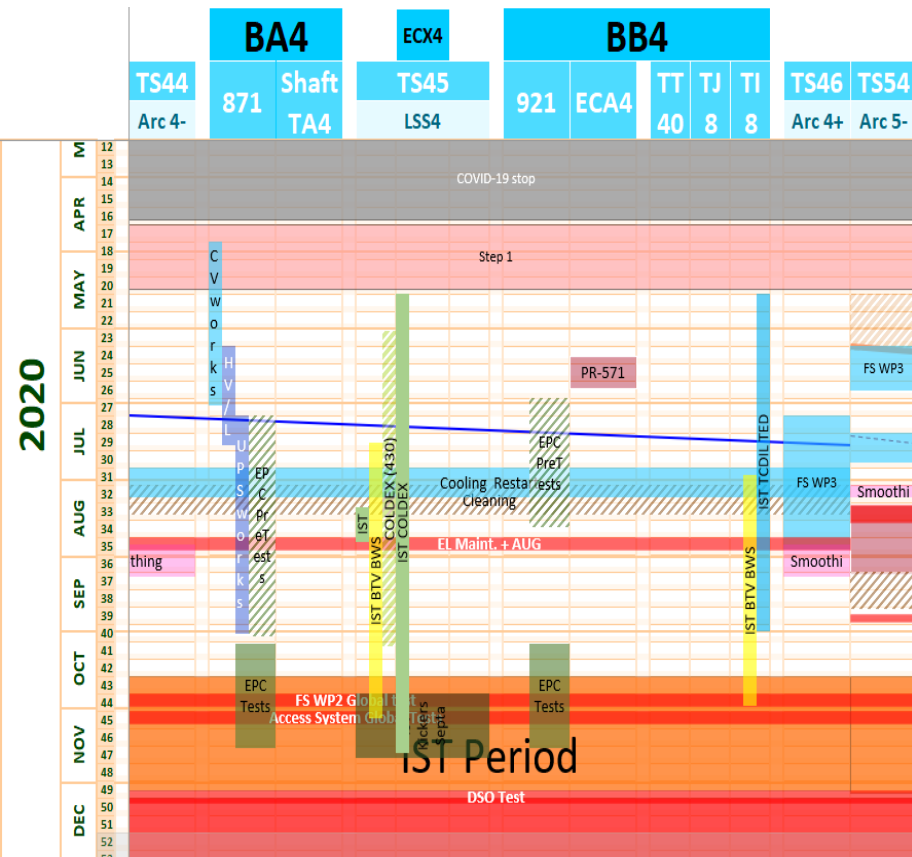
## BA3: surface

- SPS 200 MHz amplifiers maintenance / Consolidation
- Low Level RF Upgrade
- Control upgrade: Gateway - FGC Ether / BIS
- SMQ: Modification des convertisseurs QUAD
- **Underground:**
  - PPS Project: New access system
    - Access still possible with a guardian onsite.
  - FS WP2 (Dismantling old system)
  - ALPS BPM & adapter connection
  - ALPS FE installation & labeling
  - Re-installation of RF Cavities (LSS3)

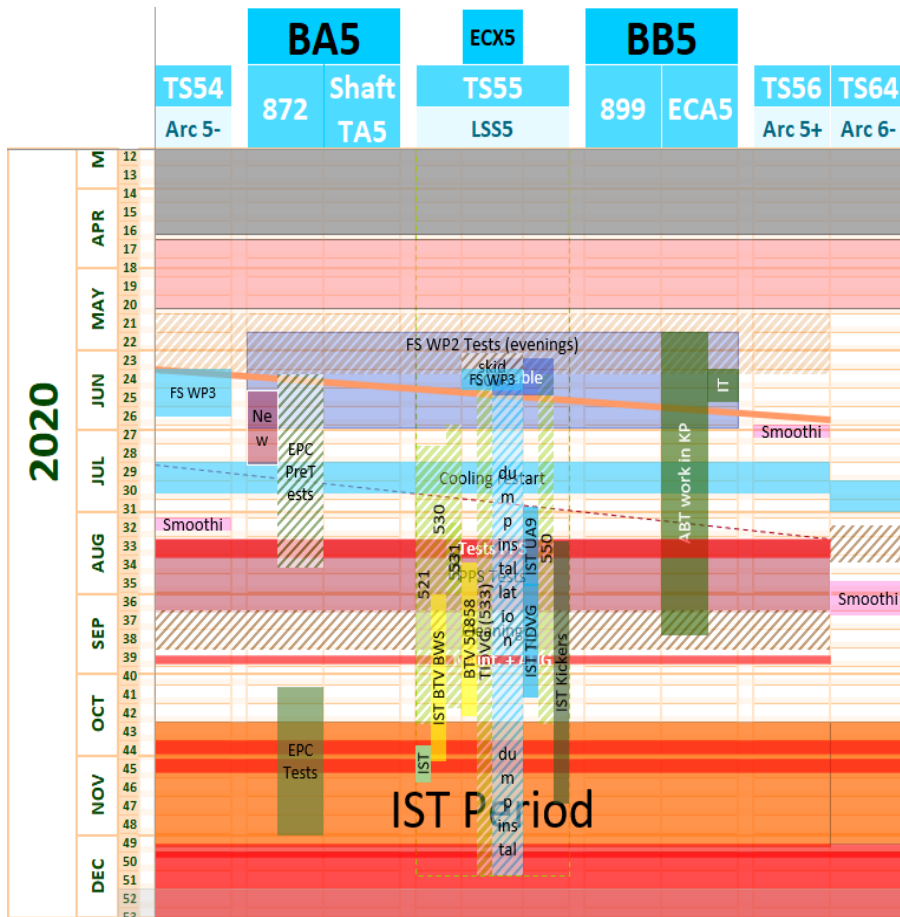
# SPS 4: Works Scheduled W23 & 24

## BA4 Surface:

- Travaux CV BA4 (local EG CV)
- SPS Mains PLC Interlocks Tests
- CIS: Finir modification CIS
- Oil Transformer maintenance
- Control upgrade: Gateway - FGC Ether / BIS
- HV Electrical Works
- Installation of new fencing around site
- **Underground:**
- Coldex activities



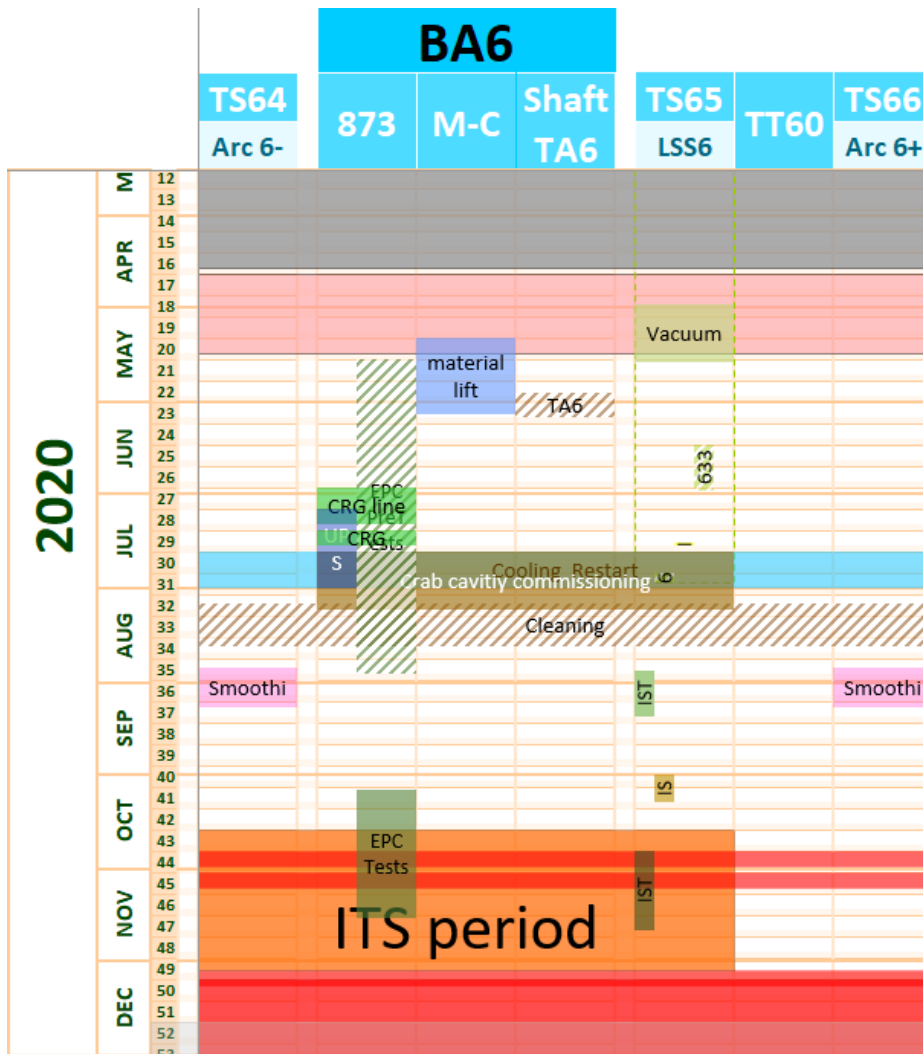
# SPS 5: Works scheduled W23 & 24



## BA5

- Fire safety WP3 in ECX5 and arc 5- will start on 08/06 in ECX5
- Finish SMB trench in TA5: 02/06
- CIS consolidation (EPC): from 02/06 for 2 weeks
- IT works in KP from 08/06 for 2 weeks
- Ion pumps consolidation?

# SPS 6: Works Scheduled W23 & 24



## BA6: Surface

- Oil Transformer maintenance
- Control upgrade: Gateway - FGC Ether / BIS
- CIS: Finir modification CIS
- STACC DCCT
- Condensator bench on R35 converter
- **Underground:**
  - FS\_(WP2) Connection of Fire Doors
  - Completion of TA6 trench
  - Monte-charge refurbishment
    - Acceptance test 4<sup>th</sup> June

# SPS – vacuum sectors

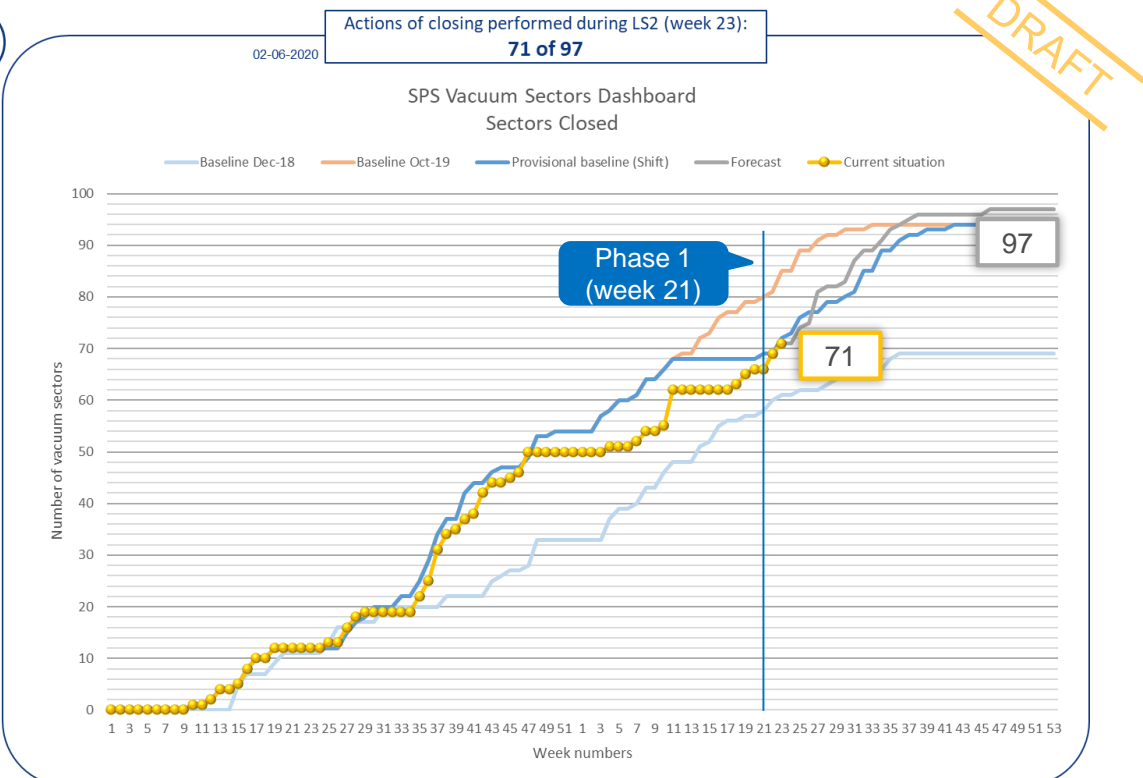
- The provisional baseline has been adapted by shifting the activities by “Stop + Phase 0” duration to all the sectors
- An analysis with TE-VSC-BVO has been done to make a more detailed forecast
- Still some closing dates/sequences under discussion
- Sectors closed last week (Week 22): 120, 142, TI8

Sectors which have been closed during LS2			71/97*
<b>Point 1</b>	<b>Point 3</b>	<b>Point 5</b>	
Arc 1- (2/2)	Arc 3- (2/2)	Arc 5- (2/2)	
111	311	511	
112	312	512	
<b>LSS 1 (6/10)</b>	<b>LSS 3 (11/11)</b>	<b>LSS 5 (6/6)</b>	
120	321 - LS2	521 - LS2	
134 - LS2	331 - LS2	530 - LS2	
135 - LS2	332 - LS2	531 - LS2	
136 - LS2	333 - LS2	532 - LS2	
142 - LS2	334 - LS2	533 - LS2	
143	335 - LS2	550 - LS2	
150	336 - LS2	Arc 5+ (2/2)	
Arc 1+ (2/2)	337 - LS2	561	
161	338 - LS2	562	
162	339 - LS2	<b>Point 6</b>	
TT10 (1/1)	351	Arc 6- (2/2)	
<b>Point 2</b>	Arc 3+ (2/2)	611	
Arc 2- (2/2)	361	612	
211 - LS2	362	<b>LSS 6 (6/8)</b>	
212 - LS2	<b>Point 4</b>	621	
<b>LSS 2 (5/6)</b>	Arc 4- (2/2)	631	
220	411	632	
231	412	633	
232	<b>LSS 4 (5/6)</b>	634	
233	420	635	
240	421	640	
251	425	651	
Arc 2+ (2/2)	430	Arc 6+ (2/2)	
261	435	661	
262	440	662	
TT20 (1/1)	Arc 4+ (1/2)	TT60 (1/1)	
	461	<b>Point 7</b>	
	462	TI2 (1/1)	
	<b>TI8 1/1</b>	TT66 (1/1)	

□ Closed under static vacuum due to COVID-19 situation

Performed in 72 sectors

□ Sector closed   
 □ New sector to be closed   
 □ Sector finally not closed  
□ Sectors to be re-closed (2<sup>nd</sup> time)   
 □ Sector re-closed (2<sup>nd</sup>)  
□ Sectors to be re-closed (3<sup>rd</sup> time)   
 □ Sector re-closed (3<sup>rd</sup>)





# SPS – vacuum sectors

SPS LSS1 Vacuum Sectors Dashboard  
Sectors Closed



DRAFT

The LSS1 has been re-defined to remove the limit sector activity (arcs).  
From 10 activities to 5 in the LSS1.

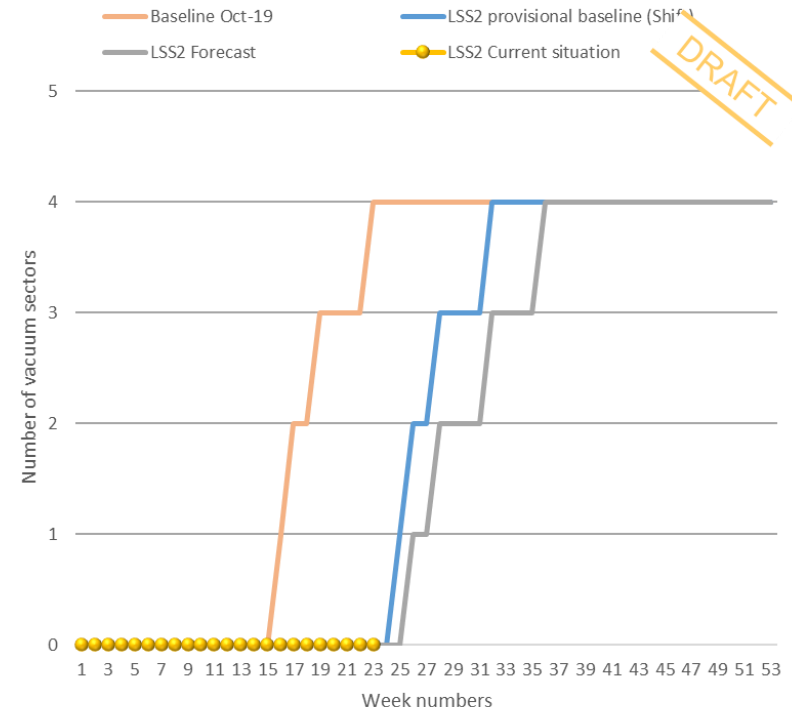
## LSS1

- All the LSS1 but the sector which gives access to TT10 is closed now
- New closing date for TT10 access: 29-06-20

## Arcs

- 1-: Closed permanently
- 1+: Mechanically closed

SPS LSS2 Vacuum Sectors Dashboard  
Sectors Closed



DRAFT

The LSS2 has been re-defined to remove the limit sectors (arcs).  
From 7 activities to 4 in the LSS2.

## LSS2

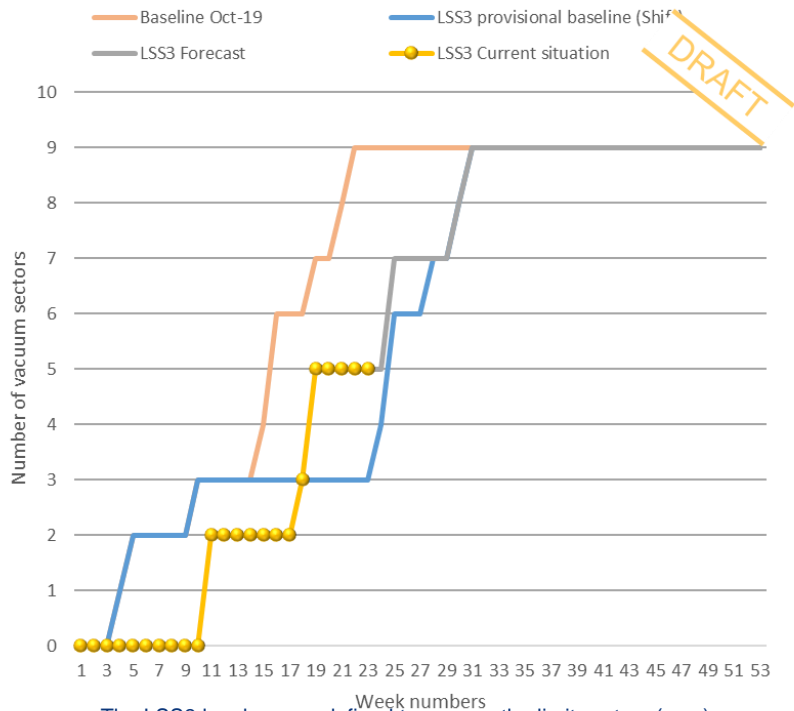
- Dates of the pumping of the septas' sectors under discussion

## Arcs

- 2-: aC coating activities
- 2+: Closed permanently

# SPS – vacuum sectors

SPS LSS3 Vacuum Sectors Dashboard  
Sectors Closed



The LSS3 has been re-defined to remove the limit sectors (arcs).  
From 7 activities to 4 in the LSS3.

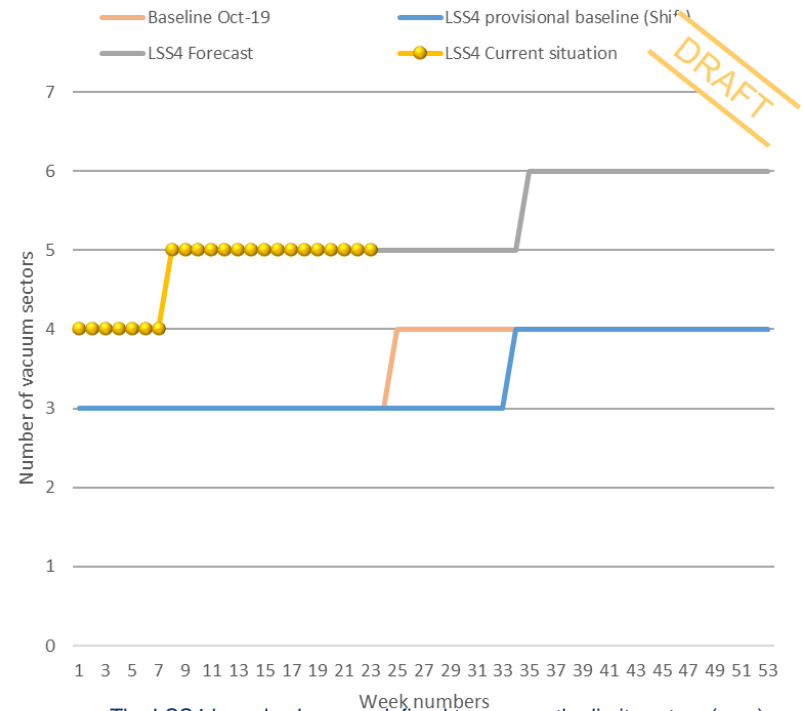
## LSS3

- Closing dates under discussion

## Arcs

- 3-: Closed permanently
- 3+: Closed permanently

SPS LSS4 Vacuum Sectors Dashboard  
Sectors Closed



The LSS4 has also been re-defined to remove the limit sectors (arcs).  
From 7 activities to 6 in the LSS4.

## LSS4

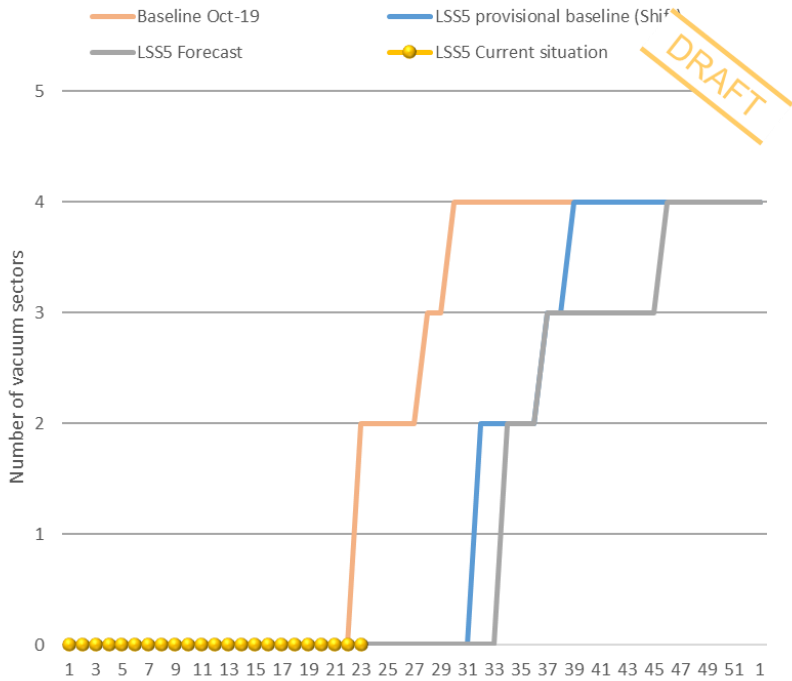
- All the LSS closed but the COLDEX sector, as planned

## Arcs

- 4-: Closed permanently
- 4+: Closed permanently

# SPS – vacuum sectors

SPS LSS5 Vacuum Sectors Dashboard  
Sectors Closed



DRAFT

The LSS5 has also been re-defined to remove the limit sectors (arcs).  
From 6 activities to 4 in the LSS5

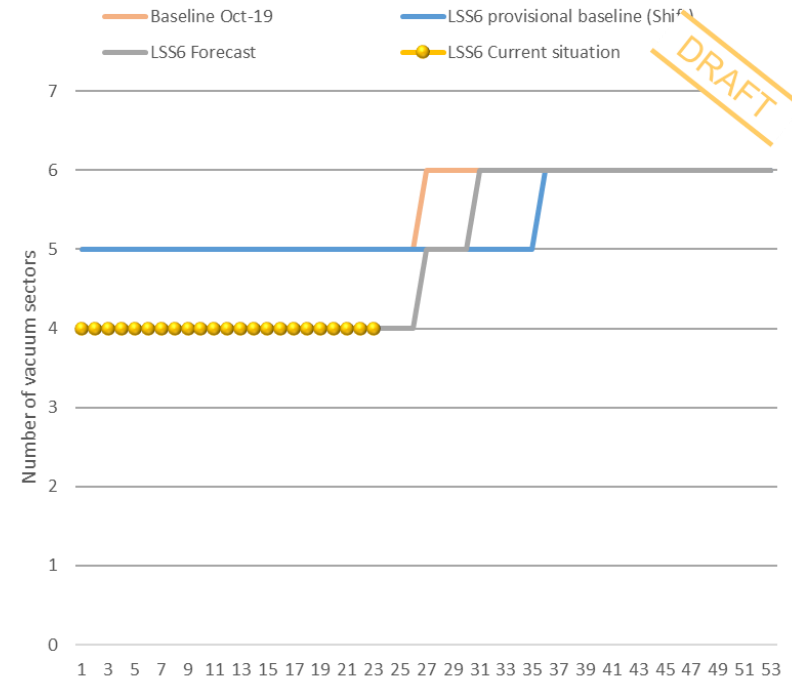
## LSS5

- Closing activities have not started yet

## Arcs

- 5-: Closed permanently (but 521)
- 5+: Closed permanently (but 550)

SPS LSS6 Vacuum Sectors Dashboard  
Sectors Closed



DRAFT

The LSS6 has also been re-defined to remove the limit sectors (arcs).  
From 9 activities to 6 in the LSS6

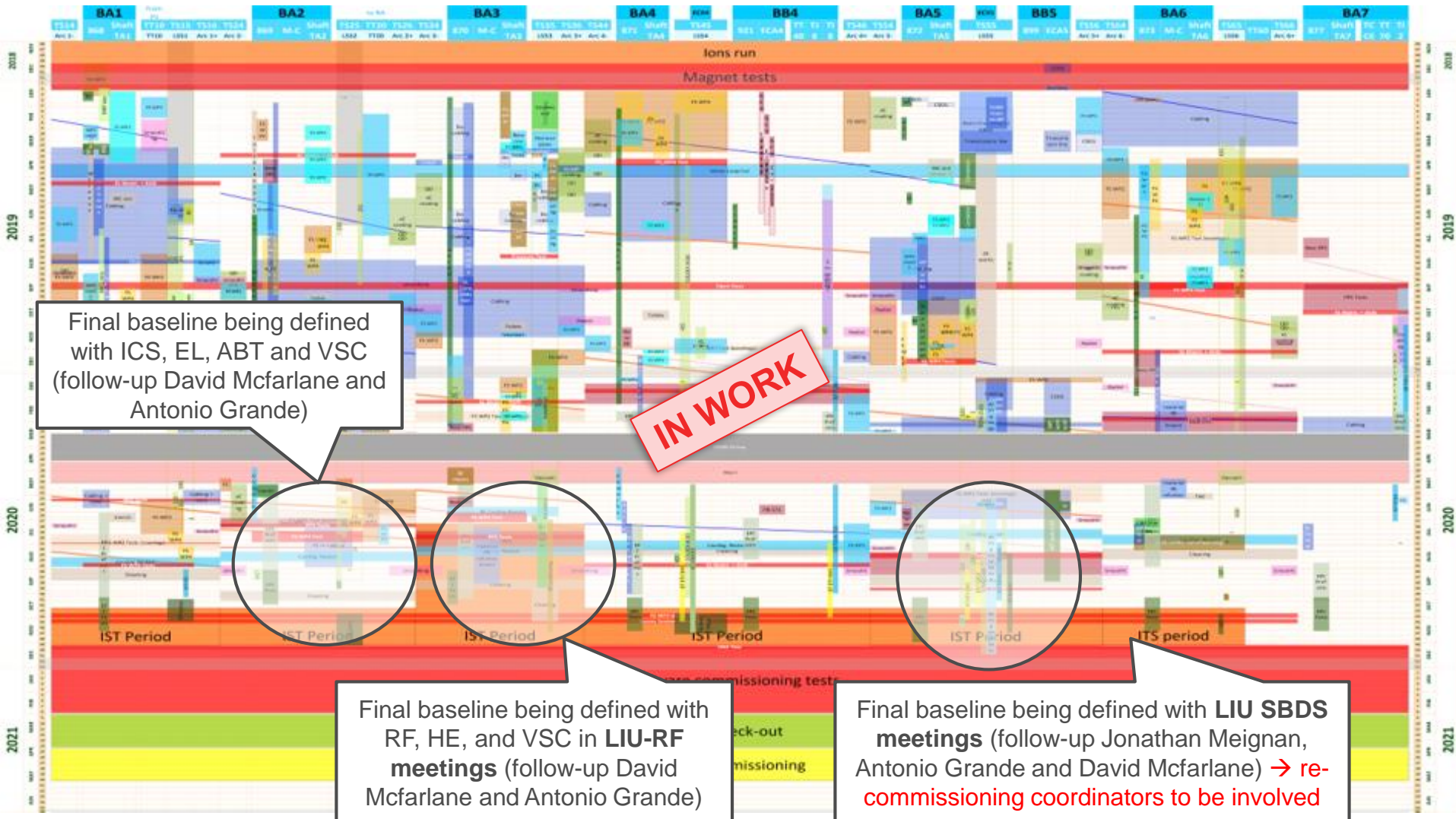
## LSS6

- Crab cavities sector will be closed in week 25
- Only this sector and TT60 access remain open

## Arcs

- 6-: Closed permanently
- 6+: Closed permanently

# Linear Schedule SPS



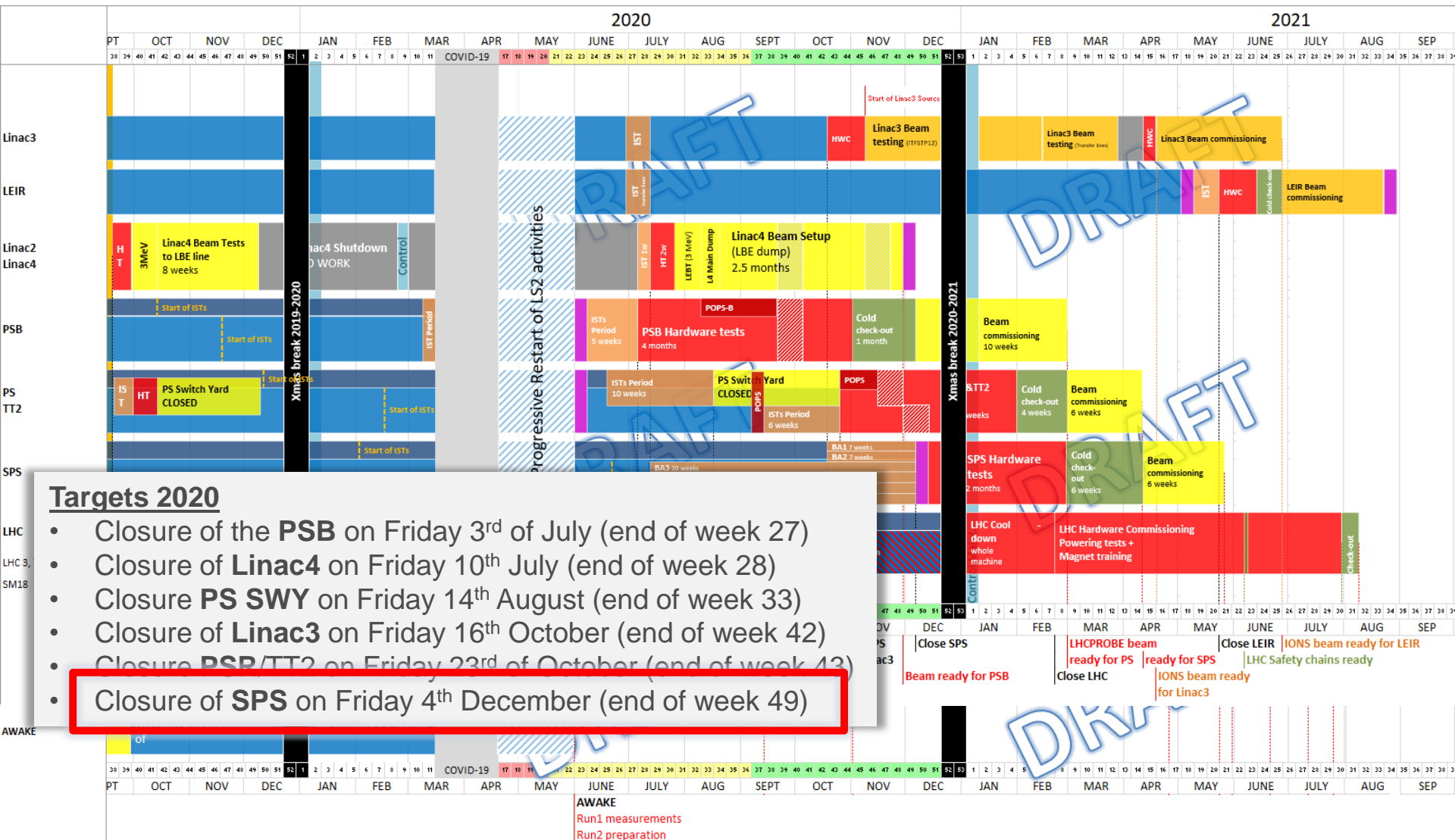
Final baseline being defined with ICS, EL, ABT and VSC (follow-up David Mcfarlane and Antonio Grande)

**IN WORK**

Final baseline being defined with RF, HE, and VSC in **LIU-RF meetings** (follow-up David Mcfarlane and Antonio Grande)

Final baseline being defined with **LIU SBDS meetings** (follow-up Jonathan Meignan, Antonio Grande and David Mcfarlane) -> **re-commissioning coordinators to be involved**

# Draft Master Schedule v.2.6



# IST planning

---

## Key Dates:

- The new IST period will start:
  - 19th October to 4<sup>th</sup> December
  - (week 43 to week 49)
- Fire Detection: Global Systems tests
  - 26<sup>th</sup> to 30<sup>th</sup> October (Week 44)
  - **SPS will be closed during this week**
- GLOBAL Testing of new PPS access system
  - 2<sup>nd</sup> to 6<sup>th</sup> November (Week 45)
  - **SPS will be closed during this week**

## CLOSURE date for the SPS

- **Friday the 4<sup>th</sup> December 2020 at 4pm**

I will be starting a fortnightly SPS IST planning meeting starting from this afternoon:

- Wednesday the 3<sup>rd</sup> June at 2pm