

LHCb signoff

Raja Nandakumar



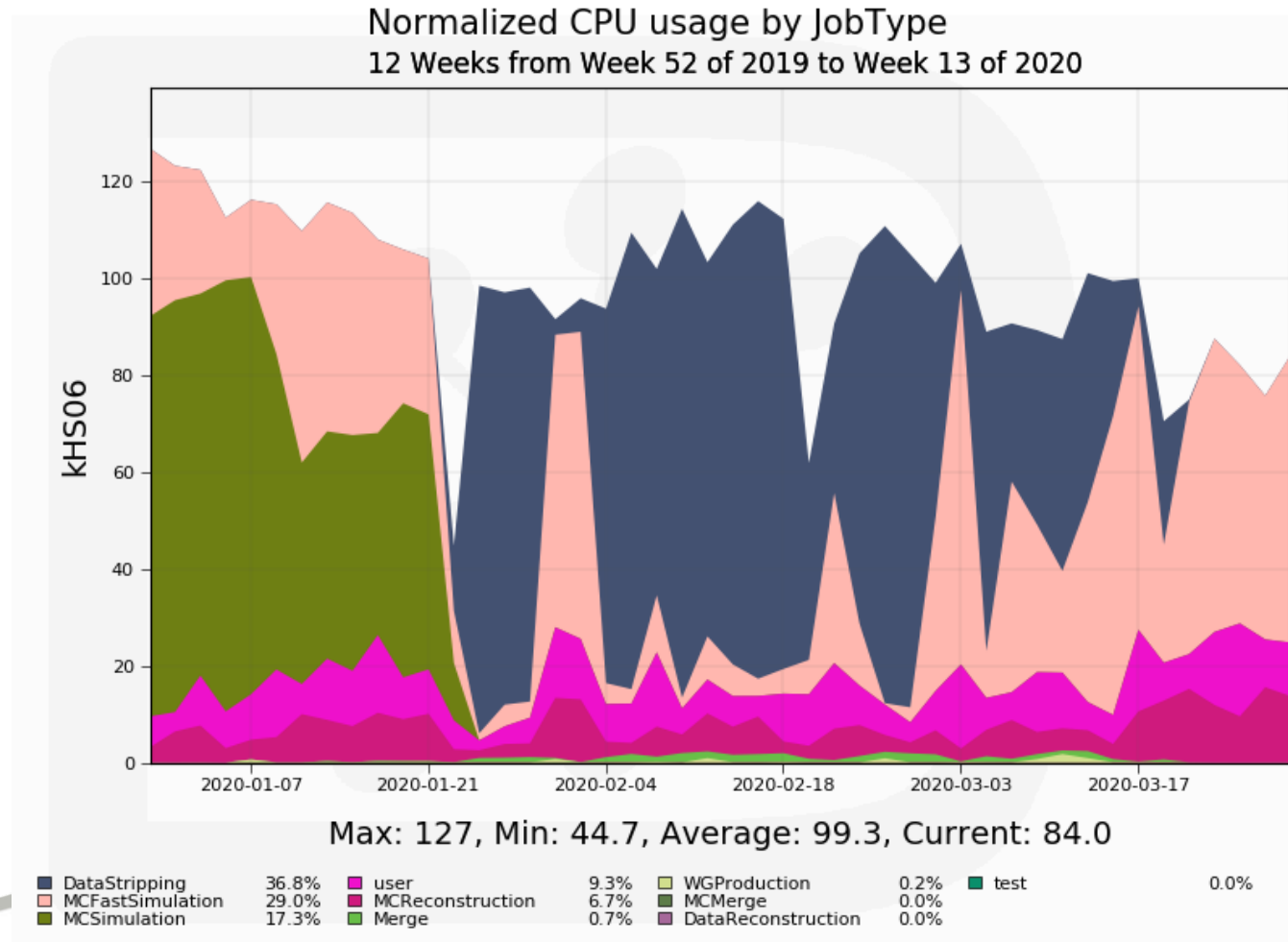
Introduction

- Notes / information remain the same as from Jan 2020
 - ➔ [Link to Andrew McNab's talk](#)
- Essential part of LHCb activities
 - ➔ Continuing issues streaming data out of ECHO
 - Affects user jobs (and WG productions)
- Overall picture continues to be very good
 - ➔ Many thanks to the Tier-1 team!



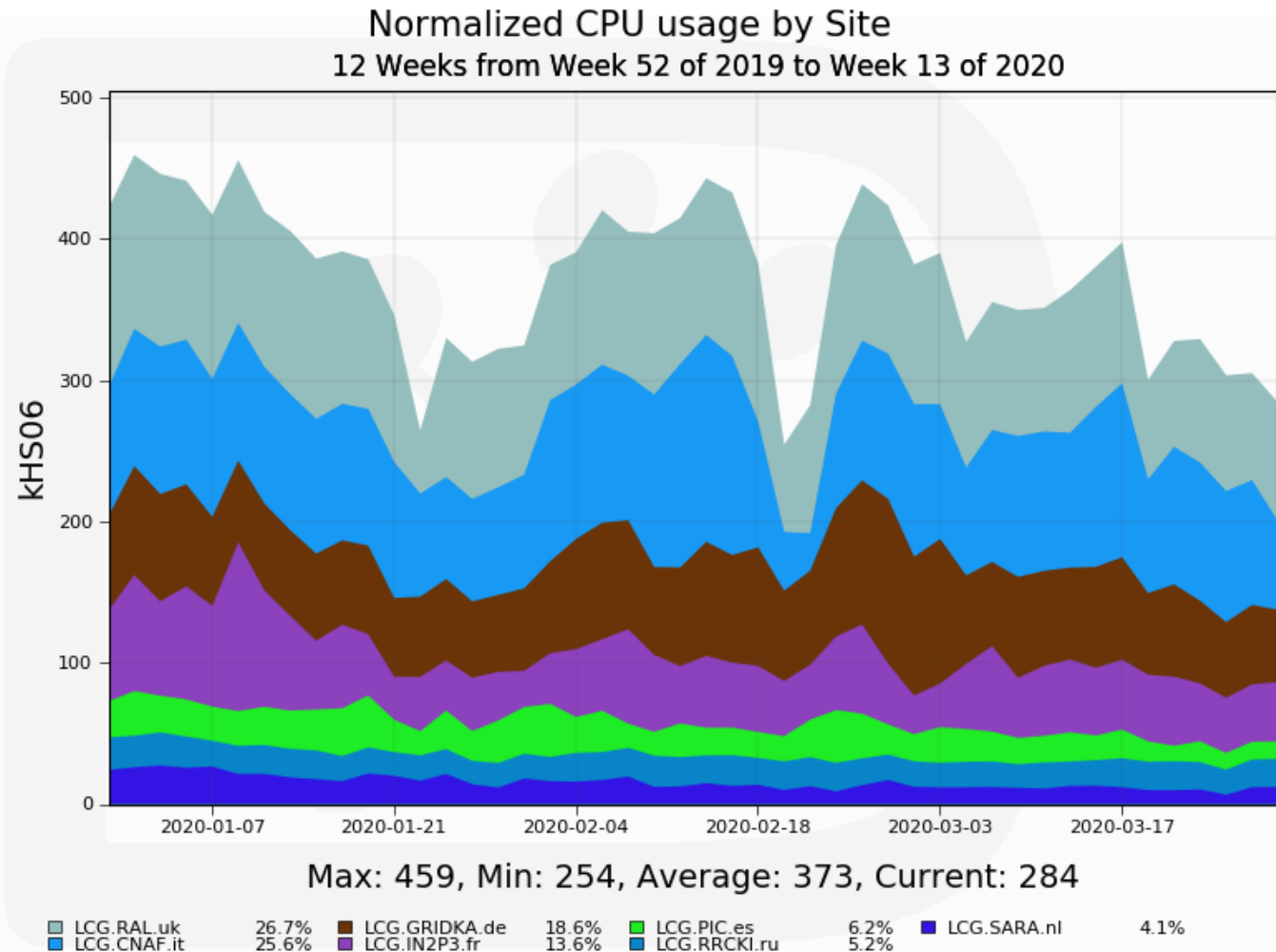
CPU used at RAL

- Usually dominated by MC Simulation
 - ➔ Significant reprocessing campaign from the end of January
 - ➔ Ended with MCFast picking up when the reprocessing finished

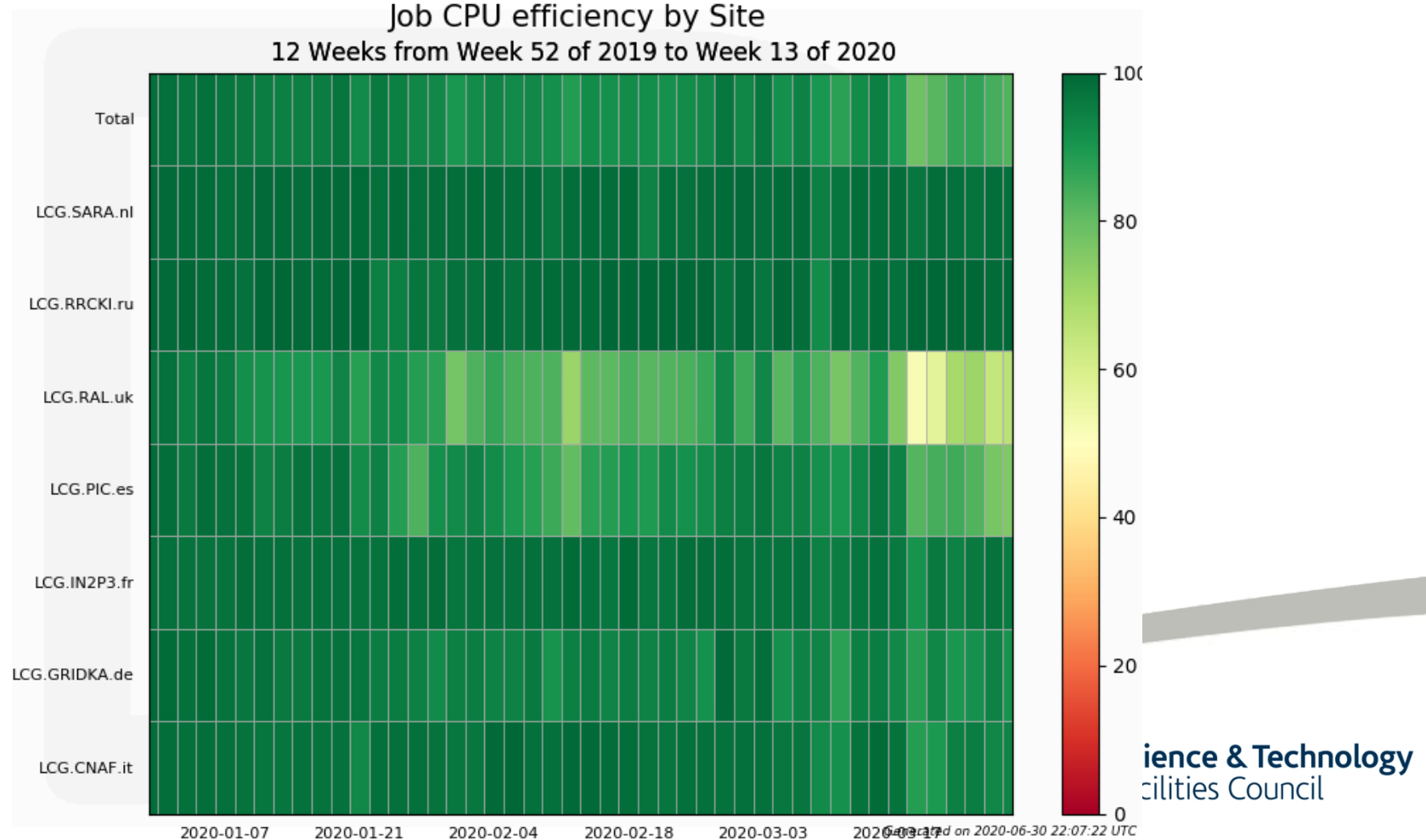


CPU used at all Tier-1 sites

- RAL broadly in line with other Tier-1s
- ➔ Listing in order of contribution
 - Ignoring CERN, HLT farm

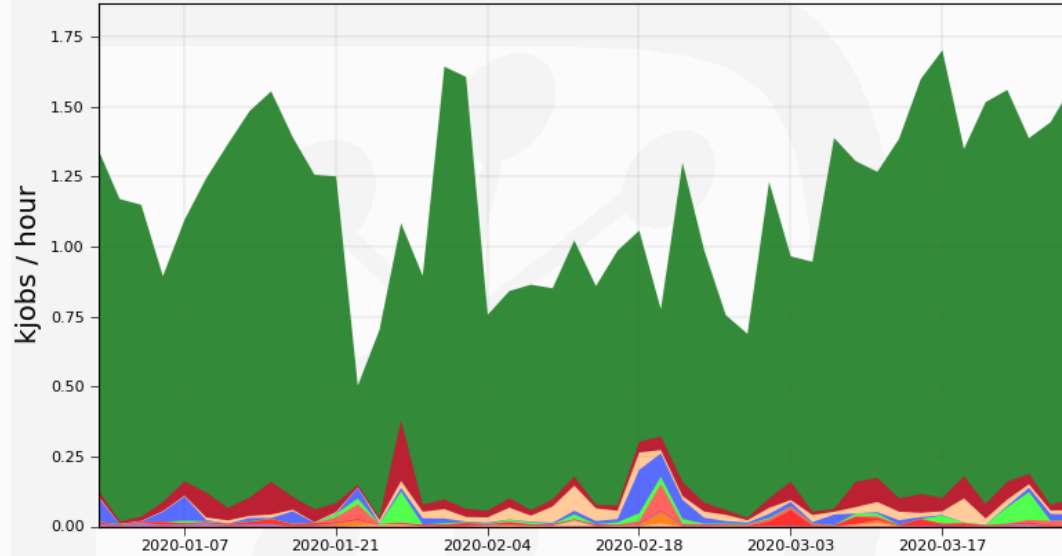


Job efficiency at Tier-1 sites



Jobs by outcome

RAL by Final Minor Status
12 Weeks from Week 52 of 2019 to Week 13 of 2020

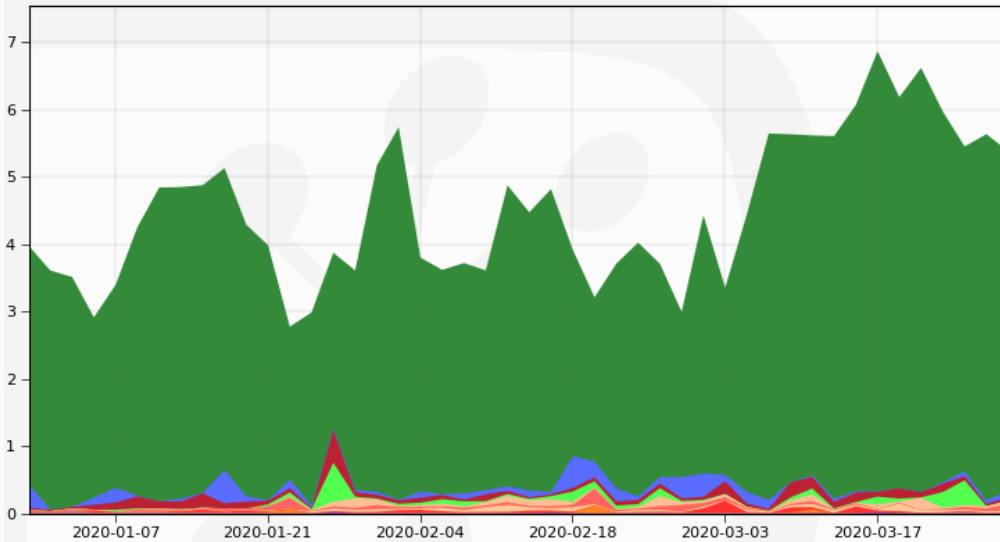


Max: 1.70, Min: 0.50, Average: 1.17, Current: 1.57

Execution Complete	90.1%	Received Kill signal	0.5%
Application Finished With Errors	3.7%	Output Data Uploaded	0.2%
Watchdog identified this job as stalled	1.8%	Uploading Job Outputs	0.2%
Input Sandbox Download	1.7%	Input Data Resolution	0.2%
Pending Requests	0.9%	JobWrapper execution	0.0%
Stalled	0.6%	Exception During Execution	0.0%

Generated on 2020-06-30 22:22:37 UTC

Tier-1 sites by Final Minor Status
12 Weeks from Week 52 of 2019 to Week 13 of 2020



Max: 6.87, Min: 2.77, Average: 4.50, Current: 5.38

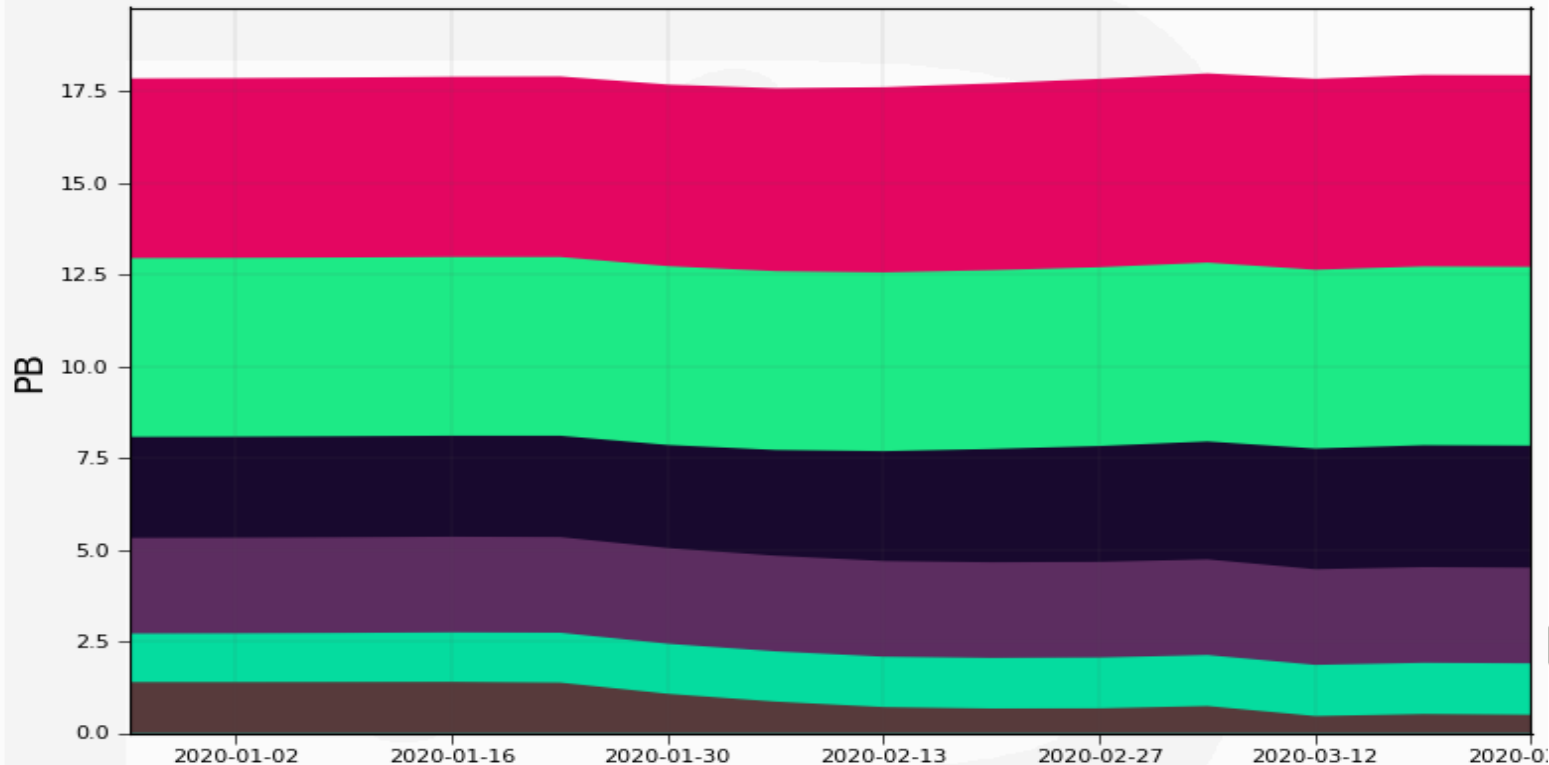
Execution Complete	91.6%	Received Kill signal	0.5%
Input Sandbox Download	2.2%	Uploading Job Outputs	0.1%
Application Finished With Errors	2.0%	Output Data Uploaded	0.1%
Pending Requests	1.2%	JobWrapper execution	0.0%
Input Data Resolution	0.8%	Exception During Execution	0.0%
Stalled	0.8%	Job has insufficient disk space to continue	0.0%
Watchdog identified this job as stalled	0.6%	Job has reached the CPU limit of the queue	0.0%

Generated on 2020-06-30 22:22:54 UTC



Storage usage at RAL

PFN space usage by StorageElement
13 Weeks from Week 51 of 2019 to Week 12 of 2020



Max: 18.0, Min: 17.6, Average: 17.8, Current: 17.9

RAL-ARCHIVE	28.3%	RAL-DST	16.8%	RAL-MC-DST	7.7%	RAL-FAILOVER	0.0%
RAL-RAW	27.4%	RAL-RDST	14.6%	RAL-BUFFER	5.2%		