



Science and
Technology
Facilities Council

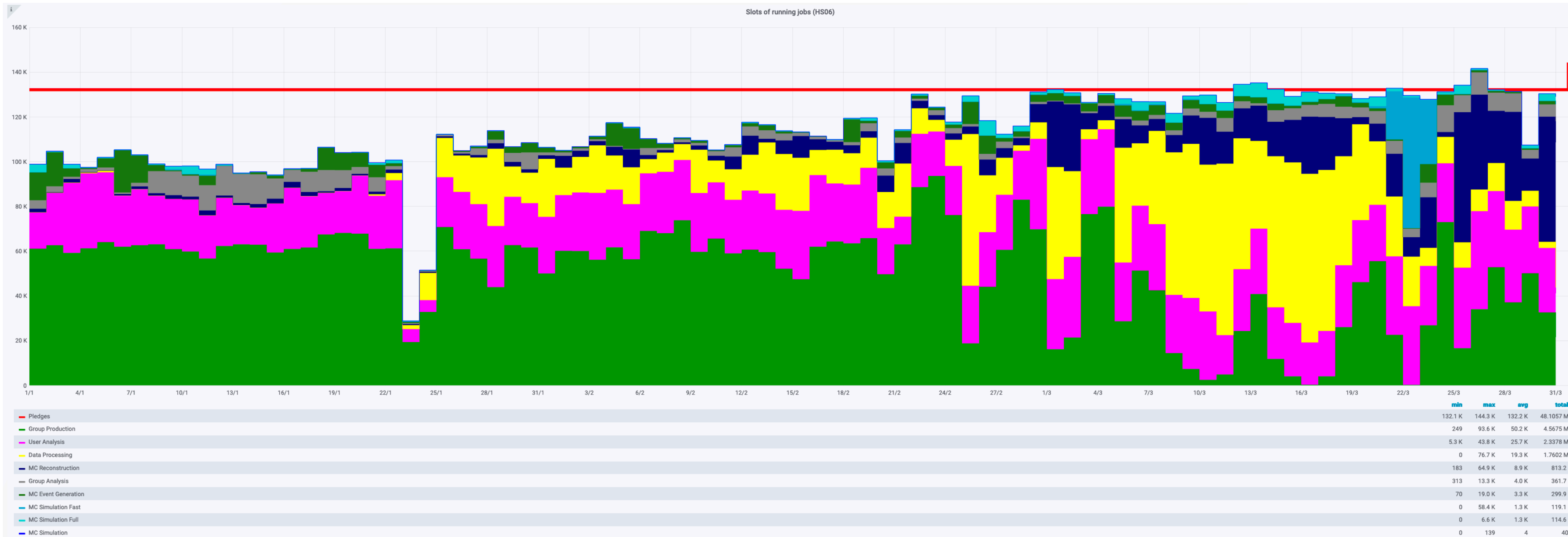


Resources Review Meeting: ATLAS Q1 2020

T. Adye, S. Martin-Haugh, James Walder,
1 July 2020

Job status

- Reporting period:
 - 1 Jan – 31 Mar 2020

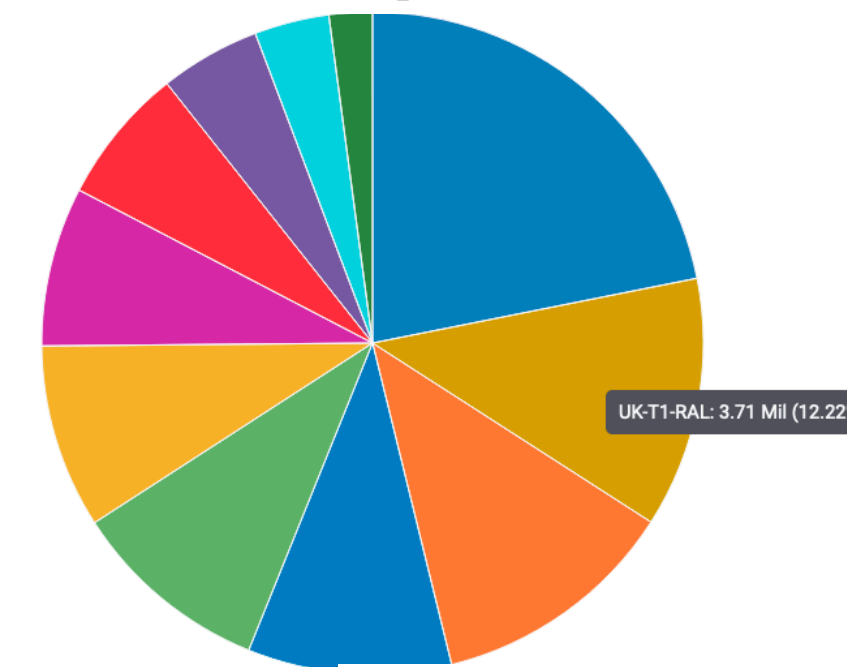


- 2019–20 pledge: 132.2 kHS06 (12.2% of ATLAS T1 pledge)
- Average over period: 114.0 kHS06
James A. had tweaked the fairshare parameters from Q4, seen returning to pledge at end of the Q1.

T1 comparison

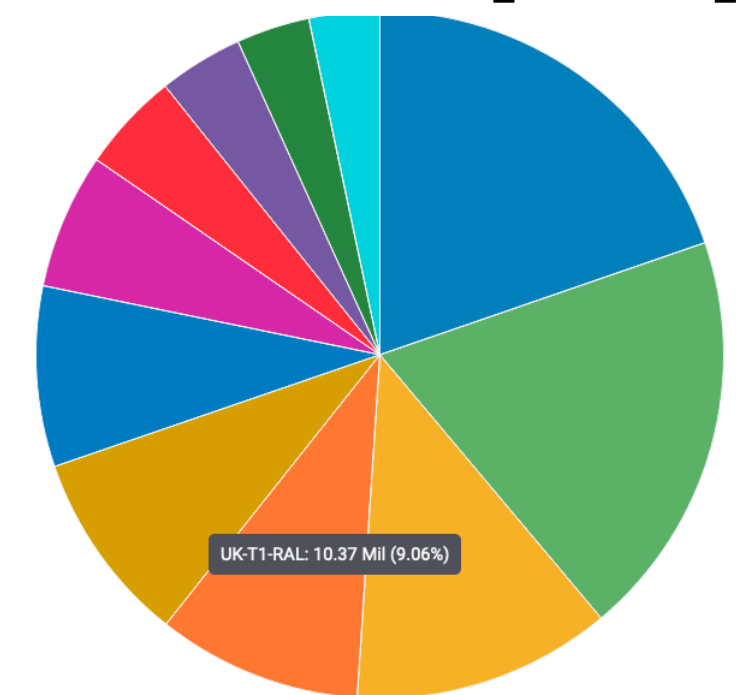
- RAL contributed (as a fraction of all T1s):
 - 12% of completed jobs
 - 9% of slots [HS06]
- Lost walltime to failed jobs 20%,
 - Slightly higher to other T1s (16%)
- RAL continues to report lower CPU efficiency (job walltime ratio) values;
 - Does not appear to translate into loss of throughput

Completed Jobs



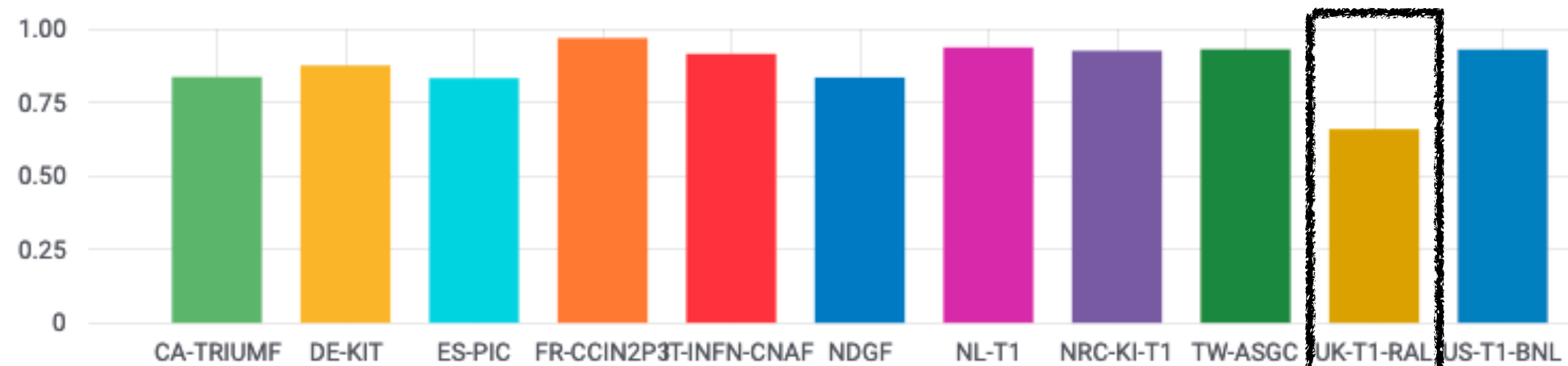
	current	percentage
US-T1-BNL	6.64 Mil	22%
UK-T1-RAL	3.71 Mil	12%
FR-CCIN2P3	3.66 Mil	12%
NDGF	3.02 Mil	10%
CA-TRIUMF	2.966 Mil	10%
DE-KIT	2.728 Mil	9%
NL-T1	2.362 Mil	8%
IT-INFN-CNAF	2.030 Mil	7%
NRC-KI-T1	1.489 Mil	5%
ES-PIC	1.110 Mil	4%
TW-ASGC	642 K	2%

Slots [HS06]

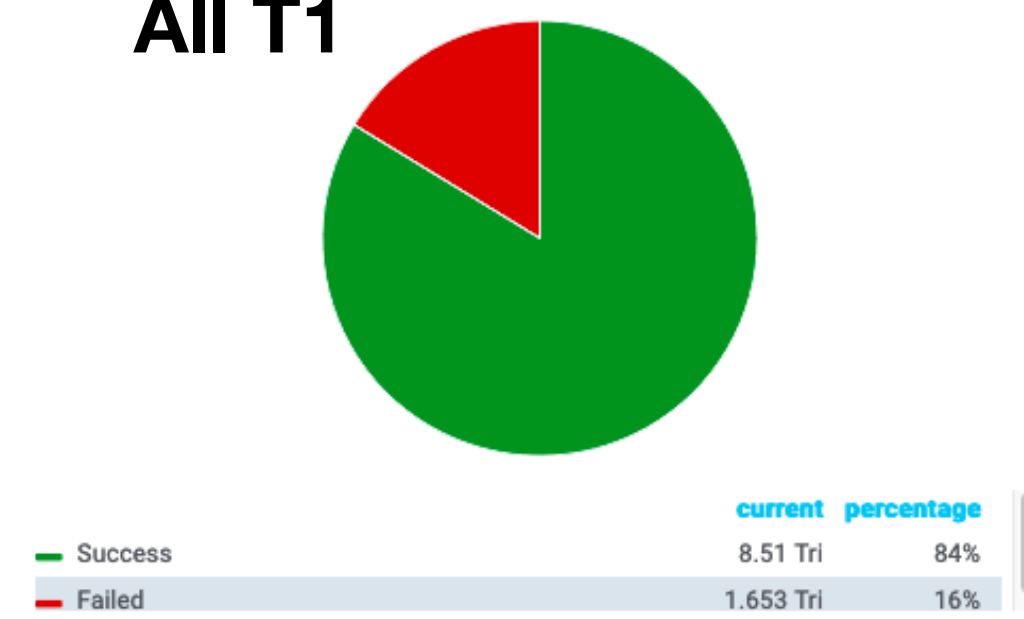


	current	percentage
US-T1-BNL	22.6 Mil	20%
CA-TRIUMF	22.0 Mil	19%
DE-KIT	13.95 Mil	12%
FR-CCIN2P3	11.02 Mil	10%
UK-T1-RAL	10.37 Mil	9%
NDGF	9.72 Mil	8%
NL-T1	7.30 Mil	6%
IT-INFN-CNAF	5.36 Mil	5%
NRC-KI-T1	4.54 Mil	4%
TW-ASGC	3.96 Mil	3%
ES-PIC	3.80 Mil	3%

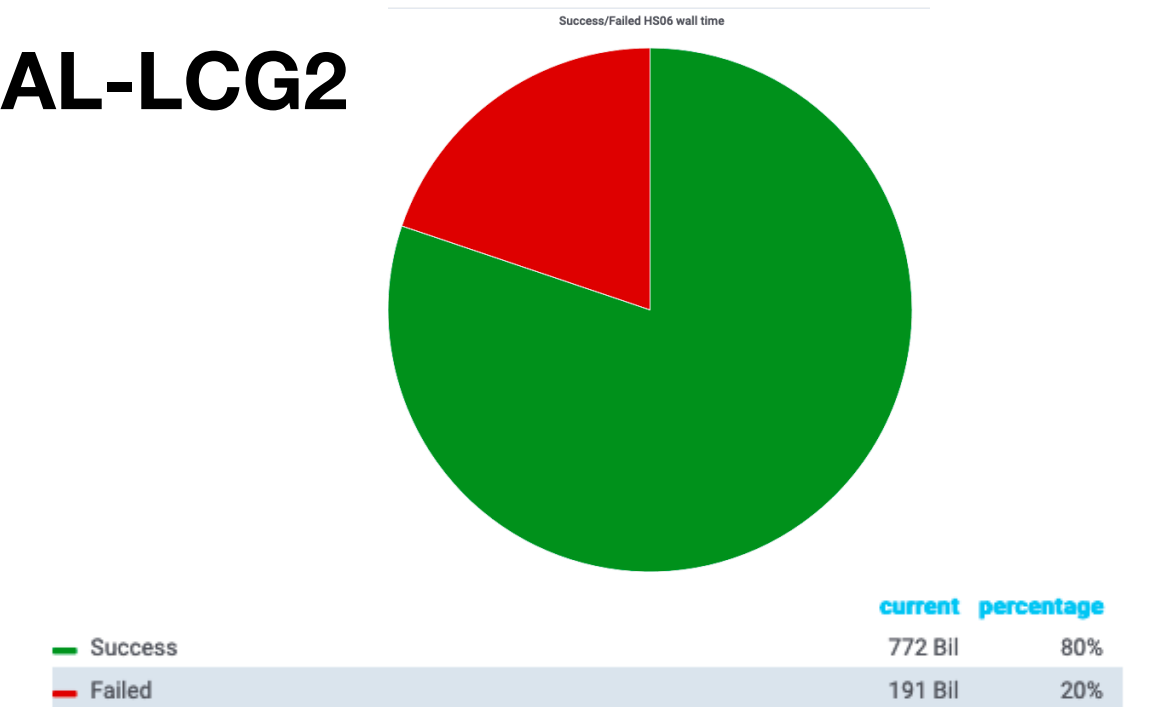
Average CPU Efficiency Good jobs



All T1 Success/Failed HS06 wall time

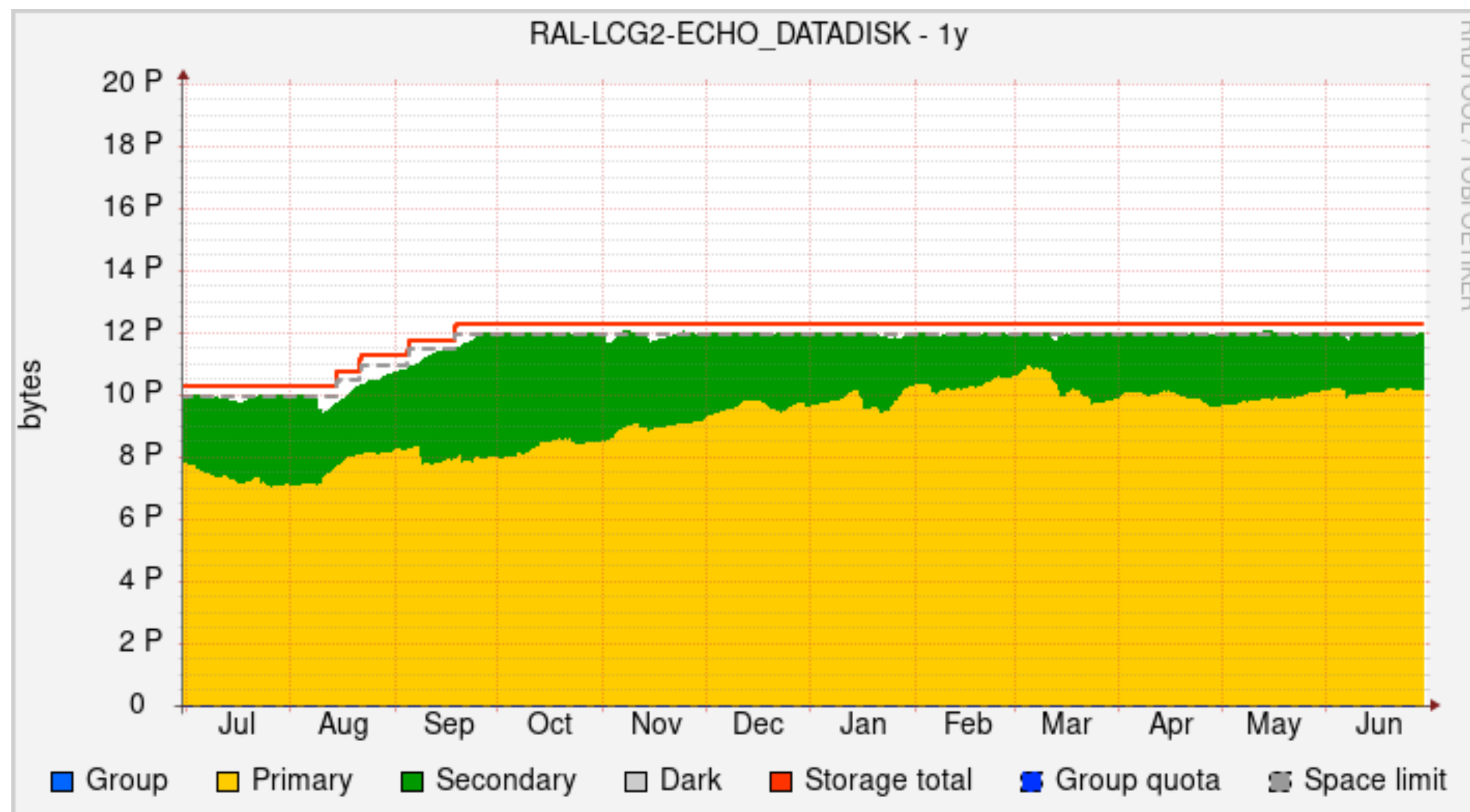
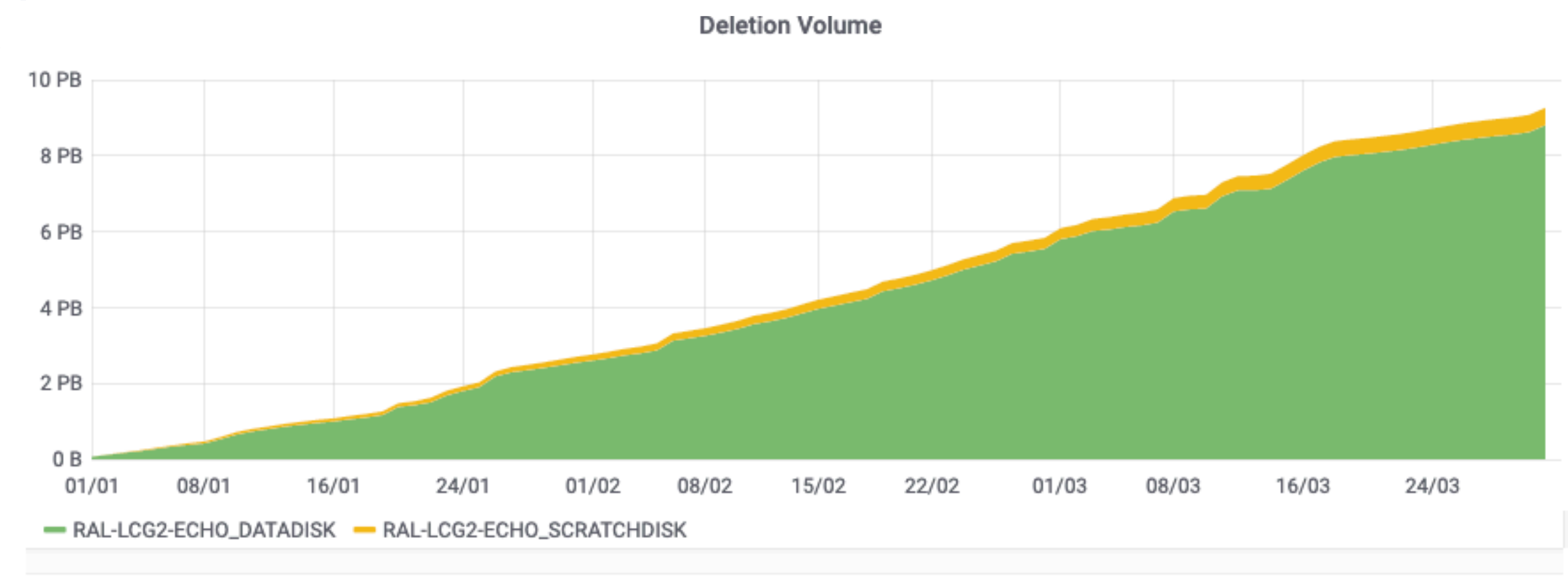


RAL-LCG2 Success/Failed HS06 wall time



Disk usage

- 12PB disk used
 - Pledge 11 PB
- 8.6PB transferred into RAL disk (includes from prod. / user jobs, etc)
- 9.1PB deleted
- Reminder :
 - RAL Echo quota increased on request in Aug/Sep to provide 2020 quota early.



Tape

- 24.7 PB in MC and Data Tape
 - 27.6PB Pledged
- 2.6PB transferred into Tape over this period
- Data Carousel tests continued during period:
 - Exceeded 2GB/s peak throughput (~1.5GB/s avg).

