

*East Hall under construction - 1962*

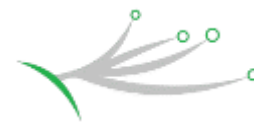
# East Area Renovation SIGNAL CABLING

G. Girardot, EN-EL-FC

03 juillet 2020



ENGINEERING  
DEPARTMENT

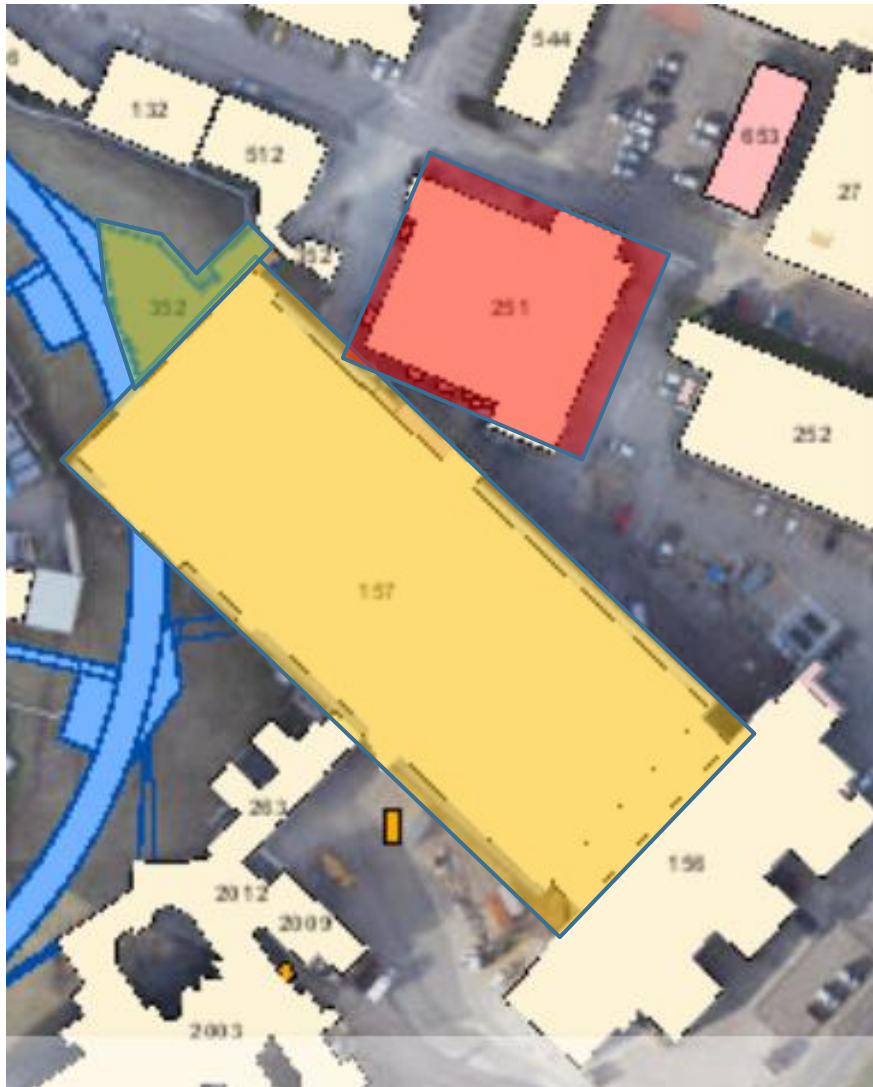


EAST AREA RENOVATION



# 1. Cabling campaigns: East Area Renovation

## Intervention overview



3 cabling campaigns  
≈ 55 km

1. EXEEHU0-CC02 – b. 352
2. EXEEHU0-CC03 – b. 251
3. EXEEHU0-CC04 – b. 157

# 1. Cabling campaigns – Building 352

- Constraints:
  - Restricted access during pulling phase
  - Opening cable passages - “caniveau”
  - Congested work area (drums, material, Pyre,...)

EXEEHU0-CC02

- Length of cables  $\approx$  5922 m
- Quantity of cables  $\approx$  75
- Quantity of users  $\approx$  5

N° DIC	Ref. Ticket	Affaire	Group	User	Nb. cables	Length (m)
2GA20-0008	RQF0965683	S213AFE425001	TE/MPE	Adrian Miranda Fontan	12	940
2GA20-0012	RQF0959969	S213AFE425001	EN/SMM	Jerome Lendaro	10	840
2GA20-0007	RQF0971821	S213AFE425001	BE/BI -BLM	Jocelyn Tan	29	2468
2GA20-0001	RQF1012045	S213AFE425001	TE/VSC	Jose De La Gama Serrano	9	633
2GA20-0010	RQF0971375	S213AFE425001	BE/BI -BTV	Stephane Burger	15	1301

# 1. Cabling campaigns – Building 251

- Constraints:
  - Restricted access during pulling phase
  - Opening cable passages - false floors
  - Congested work area (drums, material, Pyre,...)

EXEEHU0-CC03

- Length of cables  $\approx$  2632 m
- Quantity of cables  $\approx$  133
- Quantity of users  $\approx$  2

N° DIC	Ref. Ticket	Affaire	Group	User	Nb. cables	Length (m)
2GA20-0008	RQF0965683	S213AFE427001	TE/MPE	Adrian Miranda Fontan	62	1106
2GA20-0015	RQF0863828	S213AFE427001	TE/EPC	Jose Luis Gomez Costa	71	1526

# 1. Cabling campaigns – Building 157

EXEEHU0-CC04

- Constraints:
  - Restricted access during pulling phase
  - Congested work area (drums, material, Pyre,...)
  - Large indoor storage for cable drums - winter period

- Length of cables ≈ 46762 m
- Quantity of cables ≈ 626
- Quantity of users ≈ 15

N° DIC	Ref. Ticket	Affaire	Group	User	Nb. cables	Length (m)
2GA20-0006, 2GA20-0017	<a href="#">RQF0971485</a>	S213AFE426001	EN-EA	Erwan Harrouch	111	3566
2GA20-0005	<a href="#">RQF0981360</a>	S213AFE426001	BE-ICS	Boris Morand	29	1010
2GA20-0004	<a href="#">RQF0979073</a>	S213AFE426001	BE-ICS	Boris Morand	8	3924
2GA20-0011	<a href="#">RQF0967931</a>	S213AFE426001	BE-ICS	Denis Raffourt	17	919
2GA20-0009	<a href="#">RQF0971704</a>	S213AFE426001	EN-EA	Jeremy Rosset-Lanchet	48	2965
2GA20-0001	<a href="#">RQF1012045</a>	S213AFE426001	EN-EA	Jose De La Gama Serrano	37	2813
2GA20-0007	<a href="#">RQF0971821</a>	S213AFE426001	EN-EA	Jocelyn Tan	110	12359
2GA20-0010	<a href="#">RQF0971375</a>	S213AFE426001	EN-EA	Stephane Burger	19	1881
2GA20-0012	<a href="#">RQF0959969</a>	S213AFE426001	EN-SMM	Jerome Lendaro	32	1794
2GA20-0008	<a href="#">RQF0965683</a>	S213AFE426001	TE-MPE	Adrian Miranda Fontan	52	4213
2GA20-0014	<a href="#">RQF0844633</a>	S213AFE426001	BE-ICS	Nicolas Broca	89	6252
2GA20-0013	<a href="#">RQF0959986</a>	S213AFE426001	EN-SMM	Jerome Lendaro	20	1394
2GA20-0016	<a href="#">RQF1565351</a>	S213AFE426001	EN-SMM	Jerome Lendaro	10	1850
2GA20-0002	<a href="#">RQF1002872</a>	S213AFE426001	EN-SMM	Jerome Lendaro	36	1458
2GA20-0003	<a href="#">RQF1002859</a>	S213AFE426001	EN-SMM	Jerome Lendaro	7	314

## 2. Support needed

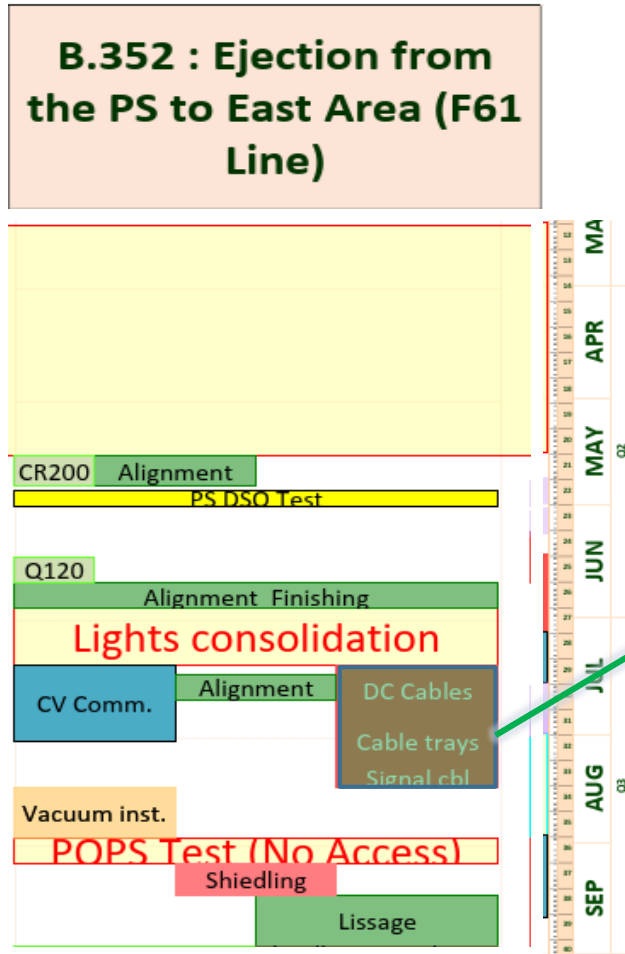
- EN/ACE
  - VIC
  - Safety support
- EN/EA
  - Detail schedule
  - On-site assistance
  - Scaffolding, ...
- EN/HE
  - Drums to transport and handle

### 3. Planning – Progress of a cabling campaign

Each of the cables campaigns will be divided into four phases:

- Phase 1: Cable pulling phase
  - **No co-activity** in the same area is possible.
    - The drums are in battery, all passages are obstructing
    - The false floors, “caniveau”, ... are all open.
    - Scaffolding, ladders, pyres,... block access.
- Phase 2: Connecting phase
  - **Co-activity tolerated** in the area, one-off works
    - Mounting of connectors and cable heads
- Phase 3: Cable test phase
  - **Co-activity tolerated** in the area, one-off works
    - Cable and Connector Testing
- Phase 4: Work validation phase
  - **Co-activity possible** in the area, no works
    - Reception of wiring and mechanical

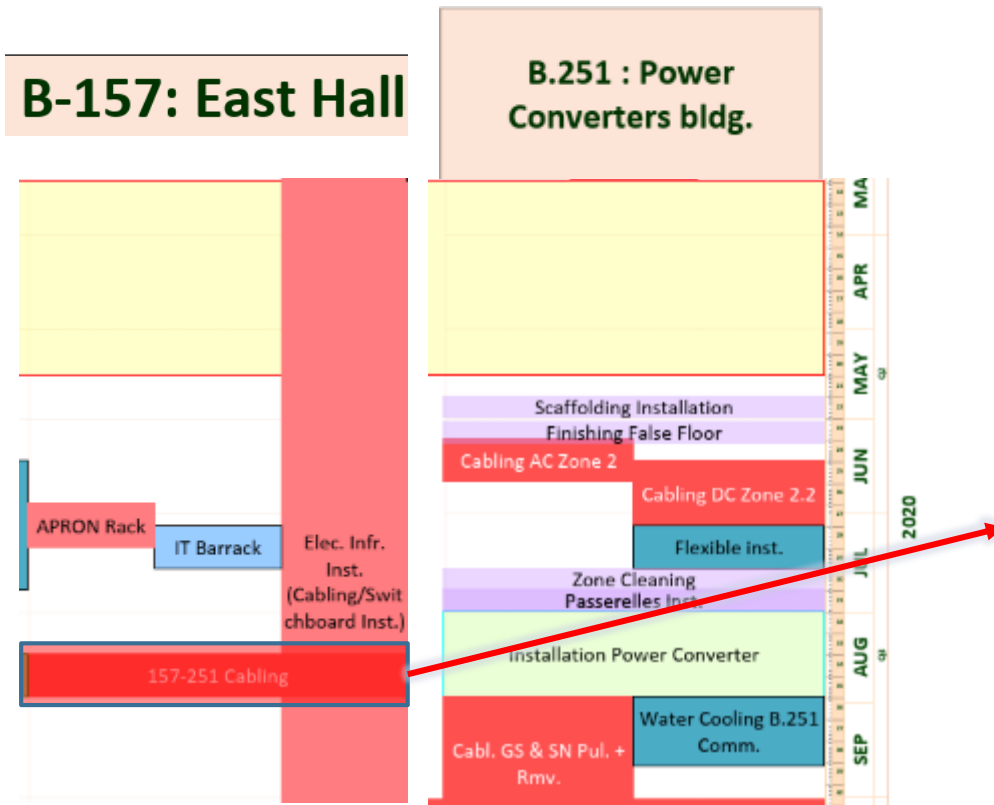
# 3. Planning



- EXEEHU0-CC02– 13/07 au 15/08
  - Pulling= 11 days (4pers.)
  - Connecting= 5 days (2pers.)
  - Test= 2 days (2pers.)
  - Reception= 1 day

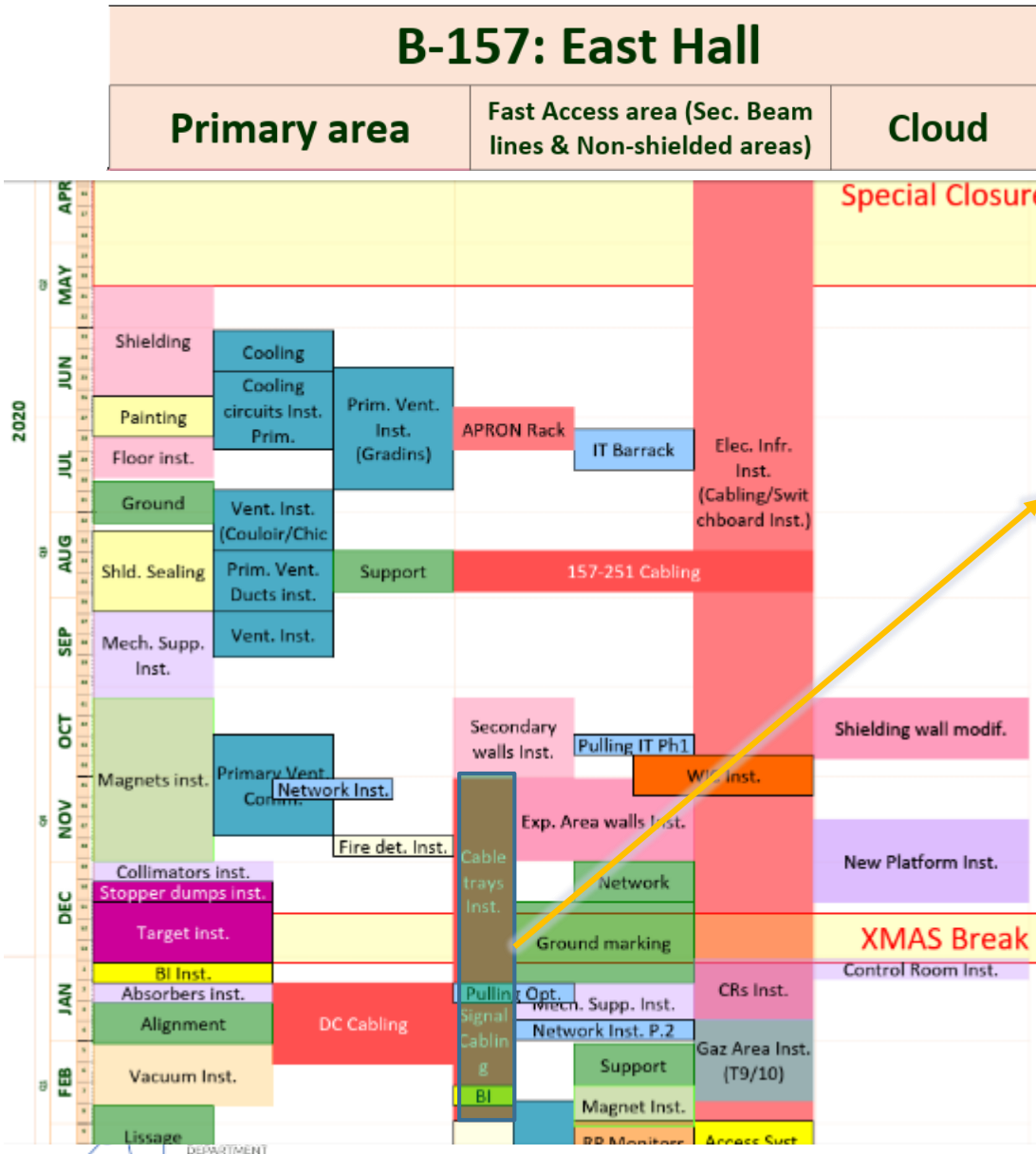


# 3. Planning



- EXEEHU0-CC03 – 17/08 au 28/08
  - Pulling= 5 days (4pers.)
  - Connecting= 9 days (2pers.)
  - Test= 4 days (2pers.)
  - Reception= 1 day

# 3. Planning



- EXEEHU0-CC04 – 2/11 au 26/02
  - Pulling= 8 weeks (8pers.)
  - Connecting= 4 weeks (4pers.)
  - Tests= 4 weeks (2pers.)
  - Reception= 1 week



ENGINEERING  
DEPARTMENT

*Thank you for your attention !*