

LS2 planning meeting

A.Tauro



Safety files

- HSE memo and instructions:
 - HSE Covid-19 directive EDMS 2370902
 - HSE Covid-19 directive contractors EDMS 2373120

DO/2020-103 5 May 2020

EDMS : 2370902

MEMORANDUM

From: Fabiola Gianotti, Director-General, *Fabiola Gianotti*
Doris Forckel-Wirth, Head of the HSE Unit *Doris Forckel-Wirth*

To: Extended Directorate,
Technical Coordinator of the large LHC experiments.

Cc: SAPOCO Chair, President of SA, HSE-MB members, Chair of ACCU

Ref: COVID-19-related health and safety measures for the period covering the restart of CERN's activities

Date: 5th May 2020

The present memorandum defines the general principles and responsibilities regarding the COVID-19-related health and safety measures applicable during the period of CERN's gradual restart following CERN's safe mode in response to the COVID-19 pandemic. It is complemented by detailed instructions given in Annex 1, which will be regularly updated and regular measures to

In accordance with the Organization's (contractor's) recommendations States, by all Health Orga

The principle of planning will require maintained

05.05.2020 EDMS : 2373120 v.1

CERN Instruction on COVID-19 Health and Safety Measures for contractors

CERN has defined specific COVID-19 related health and safety measures (the "COVID-19 measure") applicable during the period of CERN's gradual restart following CERN's safe mode in response to the COVID-19 pandemic.

In accordance with the CERN Safety Policy, the COVID-19 measures aim at ensuring the best possible protection in health and safety matters of all persons, independently of their status, participating in the Organization's activities or present on its site. They take account of relevant regulations and recommendations issued by authorities or other competent bodies of CERN's Host States or the European Union or by international bodies, such as the World Health Organization.

The COVID-19 measures will apply as from the 5th of May 2020 until they're revoked. They will be regularly reviewed to take account of the evolution of the pandemic and of scientific and regulatory developments related to COVID-19.

Contractors shall ensure that the COVID-19 measures are taken into account in the planning and execution of their activities at CERN and all relevant contractual safety documents shall be updated accordingly. Contractors shall ensure that their activities and personnel comply with the COVID-19 measures. Compliance shall be monitored by CERN in accordance with the applicable procedures, it being understood that compliance with the COVID-19 measures shall be without prejudice to compliance with all other applicable Safety rules and procedures and with applicable national regulations, as the case may be.

1. Individual Responsibility

Each person present on the CERN site shall comply with COVID-19 measures set out hereunder and any instruction given by CERN in relation to its implementation.

1.1 Access to CERN

a) Contractor personnel shall come on-site only upon agreement with CERN.

1.2 Hygiene measures:

- a) Masks¹ shall be worn indoors when other persons are present (shared workspaces) or can be encountered (public spaces). Masks shall also be worn outdoors if the physical distance of two meters cannot be respected. Masks are considered Personal Protective Equipment (PPE) and shall be used and disposed of in accordance with the relevant instructions.
- b) Hand-shaking and other close contacts with colleagues are not allowed;

¹Unless otherwise specified, or where a risk assessment has concluded differently, masks to be worn shall be at minimum surgical masks of type 1 according to EN 14935 standard.

CERN 2373120 v.1 FR - Révisé: Révisé: Public
CERN COVID-19 Health and Safety Measures - EN.pdf (révisé: 2020-05-13 14:04)

DO/2020-103 EDMS : 2370902

MEMORANDUM

De: F. Gianotti, directrice générale
D. Forckel-Wirth, chef de l'unité HSE

À: Directorate (larg)
Coordinateurs techniques des grandes expériences LHC

Cc: Président du SAPOCO, Présidente de l'Association du personnel, membres de HSE-MB, Président de l'ACCU

Objet: Mesures de santé et de sécurité relatives au COVID-19 pour la période de reprise des activités du CERN

Date: 5 mai 2020

Le présent mémorandum définit les principes généraux et les responsabilités concernant les mesures de santé et de sécurité relatives au COVID-19 applicables au cours de la période de reprise progressive des activités à la suite de la mise en mode sécurisé du CERN en réponse à la pandémie de COVID-19. Il est complété par les instructions détaillées figurant à l'annexe 1, qui seront réexaminées régulièrement pour tenir compte de l'évolution de la pandémie et des évolutions scientifiques et réglementaires. Une fois le redémarrage du CERN mené à bien, les mesures de santé et de sécurité relatives au COVID-19 seront régulièrement mises à jour.

Confirmer ont pour sécurité présente d'entrep recevoir des États internati

Les princ planifié pouvoir équival

05.05.2020 EDMS : 2373120 v.1

Instructions du CERN concernant les mesures de santé et de sécurité relatives au COVID-19 pour ce qui concerne les entreprises contractantes

Le CERN a défini des mesures spécifiques de santé et de sécurité relatives au COVID-19 (ci-après « mesures COVID-19 ») applicables au cours de la période de reprise progressive des activités à la suite de la mise en mode sécurisé du CERN en réponse à la pandémie de COVID-19.

Conformément à la Politique de sécurité du CERN, les mesures COVID-19 ont pour but d'assurer la meilleure protection possible en matière de santé et de sécurité de toutes les personnes, quel que soit leur statut, qui participent aux activités de l'Organisation ou sont présentes sur son domaine. Ces mesures tiennent compte des réglementations et recommandations pertinentes émises par les autorités ou d'autres organes compétents des États hôtes du CERN, ou encore par l'Union européenne ou par des organismes internationaux tels que l'Organisation mondiale de la santé.

Les mesures COVID-19 s'appliquent à compter du 5 mai 2020 et jusqu'à ce qu'elles soient abrogées. Elles seront réexaminées régulièrement pour tenir compte de l'évolution de la pandémie et des évolutions scientifiques et réglementaires liées au COVID-19.

Les entreprises contractantes doivent veiller à ce que les mesures COVID-19 soient prises en compte lors de la planification et de l'exécution de leurs activités au CERN. Tous les documents de sécurité contractuels concernés doivent être adaptés en ce sens. Les entreprises contractantes doivent veiller à ce que leurs activités et leur personnel se conforment aux mesures COVID-19. Le respect de ces règles sera vérifié par le CERN conformément aux procédures applicables, étant entendu que l'application des mesures COVID-19 est sans préjudice du respect des autres règles et procédures de sécurité ainsi que des réglementations nationales applicables, in cas échéant.

1. Responsabilité individuelle

Toute personne présente sur le domaine du CERN doit se conformer aux mesures COVID-19 énoncées ci-après, ainsi qu'aux instructions données par le CERN concernant leur mise en œuvre.

1.1 Accès au CERN

a) Le personnel des entreprises contractantes ne peut venir sur le domaine qu'avec l'accord du CERN.

1.2 Mesures d'hygiène

a) Le port du masque est obligatoire¹ en intérieur quand d'autres personnes sont présentes (espaces de travail partagés) ou peuvent être croisées (espaces publics). Le

¹ sauf indication contraire, ce n'est qu'une évaluation des risques à aboutir à une conclusion définitive, les masques à porter sont au minimum des masques chirurgicaux de type 1 conformes à la norme EN 14935.

CERN 2373120 v.1 FR - Révisé: Révisé: Public
CERN COVID-19 Health and Safety Measures - FR.pdf (révisé: 2020-05-13 14:04)



EN versions

FR versions



10.7.2020

LS2 planning meeting



Safety files

- HSE memo and instructions:
 - HSE Covid-19 directive EDMS 2370902
 - HSE Covid-19 directive contractors EDMS 2373120
- **HSE FAQ: <https://hse.cern/content/faq-covid-19>**

Health and Safety	
Hygiene	
How do I eliminate my waste linked to COVID-19?	+
How should workstations that are used successively be cleaned (in labos or workshops for example)?	+
How often do we need to clean/disinfect workshops and laboratories?	+
For machines and devices, what disinfectant should be used to avoid damaging material, paint, plastic? How do I apply it?	+
What SCEM code should I use to order these bins?	+

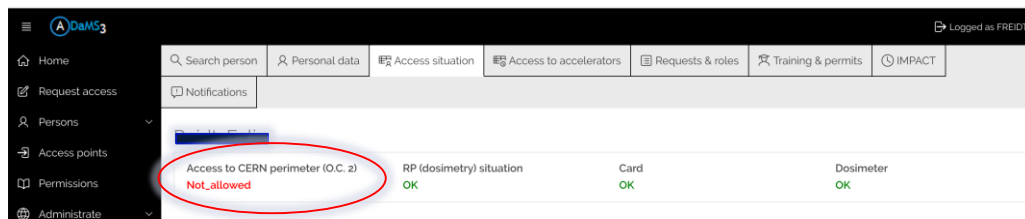
Safety files

- HSE memo and instructions:
 - HSE Covid-19 directive EDMS 2370902
 - HSE Covid-19 directive contractors EDMS 2373120
- HSE FAQ: <https://hse.cern/content/faq-covid-19>
- **ALICE specific instructions:**
 - **EDMS 2369007**

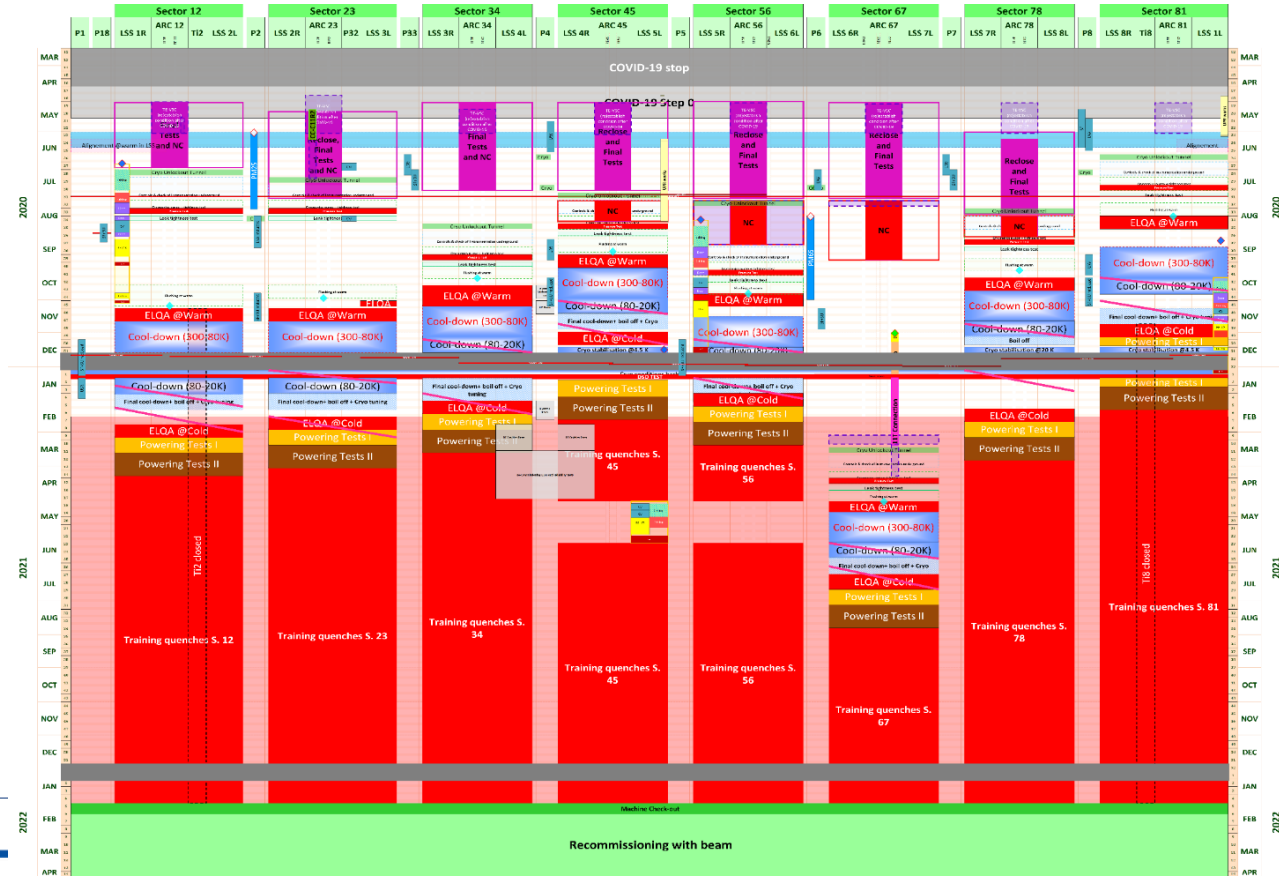
 	ALICE TC - Safety Office	
EDMS Document No: 2369007	Created: 06.05.2020	Page: 1 of 7
	Modified:	Rev. No.: 0.8
<p><i>Implementation of the General Safety Instructions and Guidelines related to the COVID19 Hazard for the ALICE activities</i></p>		
Prepared by: K. Barth , EP-AIO	Checked by: A. Augustinus, EP A. Tauro, EP C. Gargiulo, EP	Approved by: W. Riegler, EP
Distribution List ALICE Members		

Safety files

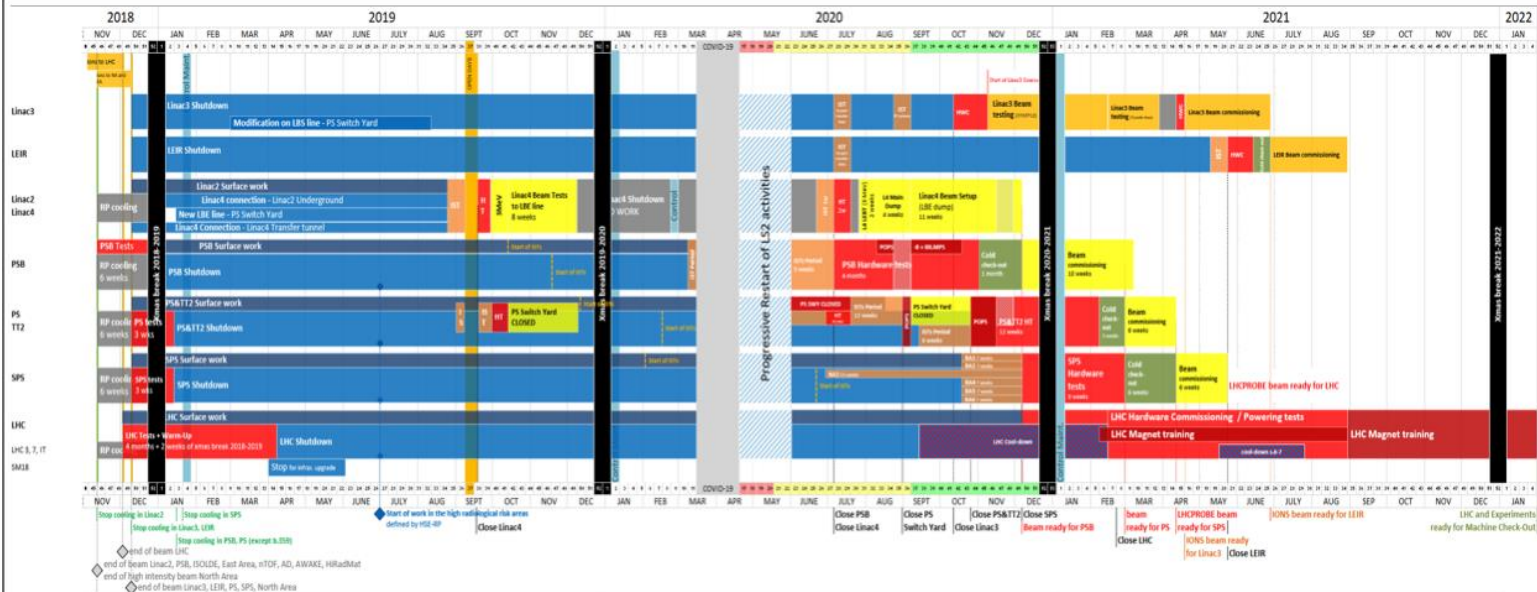
- HSE memo and instructions:
 - HSE Covid-19 directive EDMS 2370902
 - HSE Covid-19 directive contractors EDMS 2373120
- HSE FAQ: <https://hse.cern/content/faq-covid-19>
- ALICE specific instructions:
 - EDMS 2369007
- **Mandatory to come to CERN:**
 - **Covid-19 safety course**
<https://learninghub.cern.ch>
 - **Valid IMPACT**
 - **Being in ALICE white list (check O.C. 2 in ADAMS)**

LHC LS2 Baseline V2.5 FRAME 12th June LHC-PM-MS-0018 v.2.5



LS2 Master Schedule v2.7 approved on 12th June 2020



ACC-PM-MS-0002 v.2.7

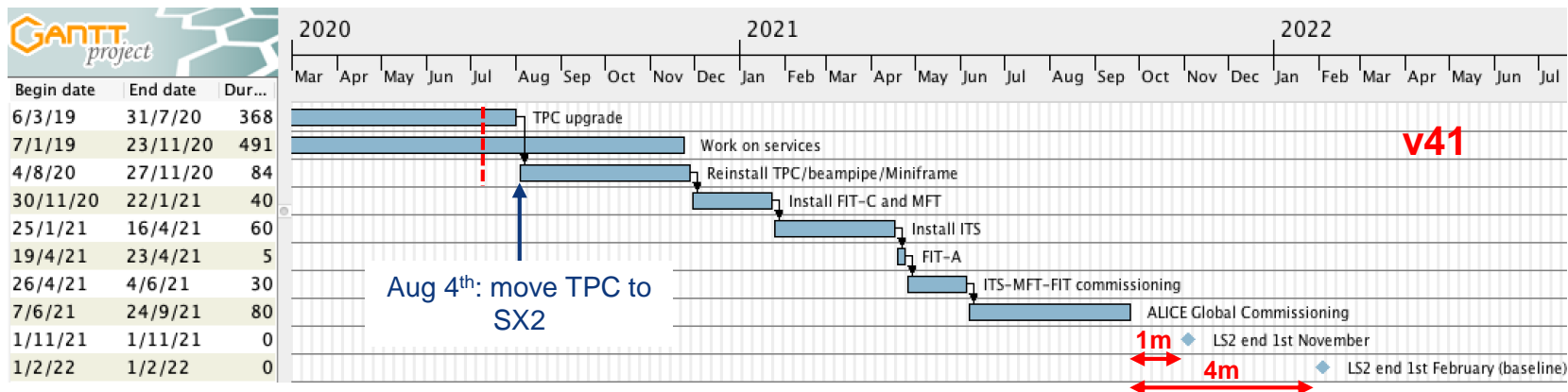
EDMS: 1687788



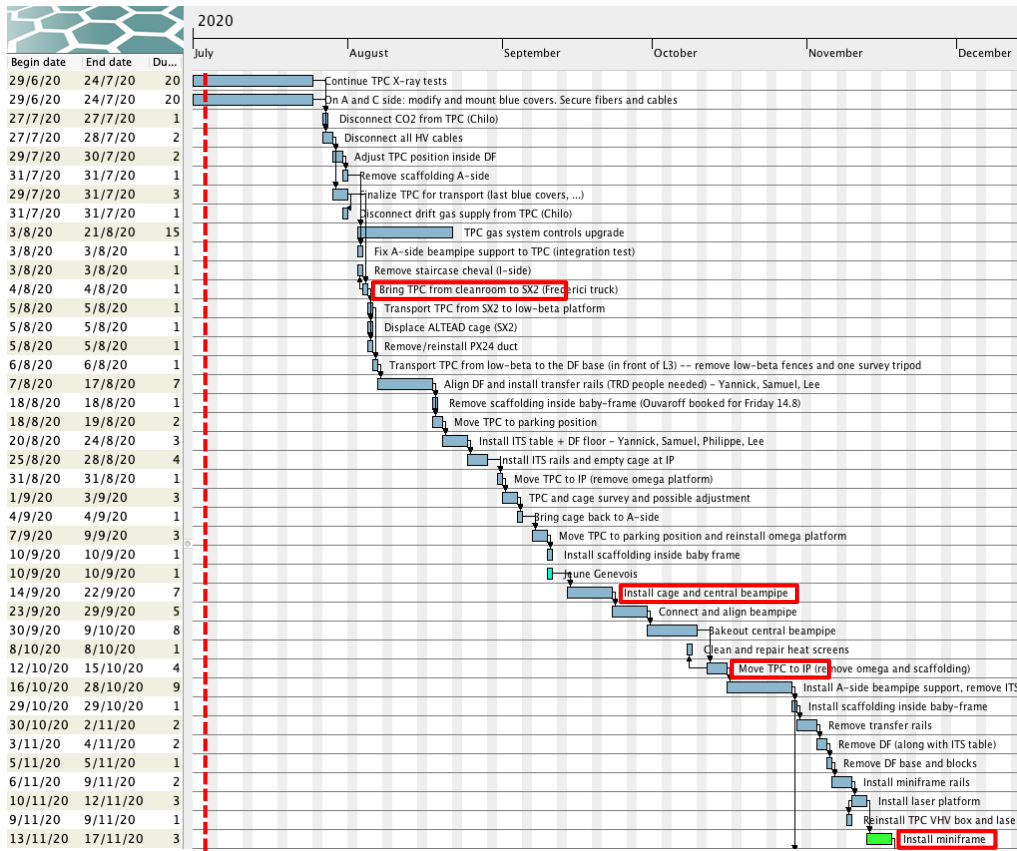
Update on the re-start plan
Frédéric Bordry
29th June 2020

Detector installation sequence v41

- **Schedule v41:**
 - 3 additional weeks in July for TPC x-ray tests
 - TPC moved to SX2 on August 4th
 - Cage insertion test done in the UX25 cavern instead of SXL2 cleanroom
 - 16w global commissioning at the end (7 June to 24 September 2021)
- RB24 beampipe reinstalled by end May 2021 → OK to inject low intensity beam by September 2021
- This plan foresees 1 and 4 months contingency with respect to the LS2 end date of 1st November 2021 and 1st February 2022 respectively



TPC/beampipe/Miniframe reinstatement sequence (v41)



Jun 29th - Jul 31st - complete TPC commissioning, X-ray tests, pack TPC

Aug 4th - transportation TPC to SX2

Aug 5th - Sep 9th - reinstall TPC cage insertion test, TPC moved to IP, adjusted and put back to parking position

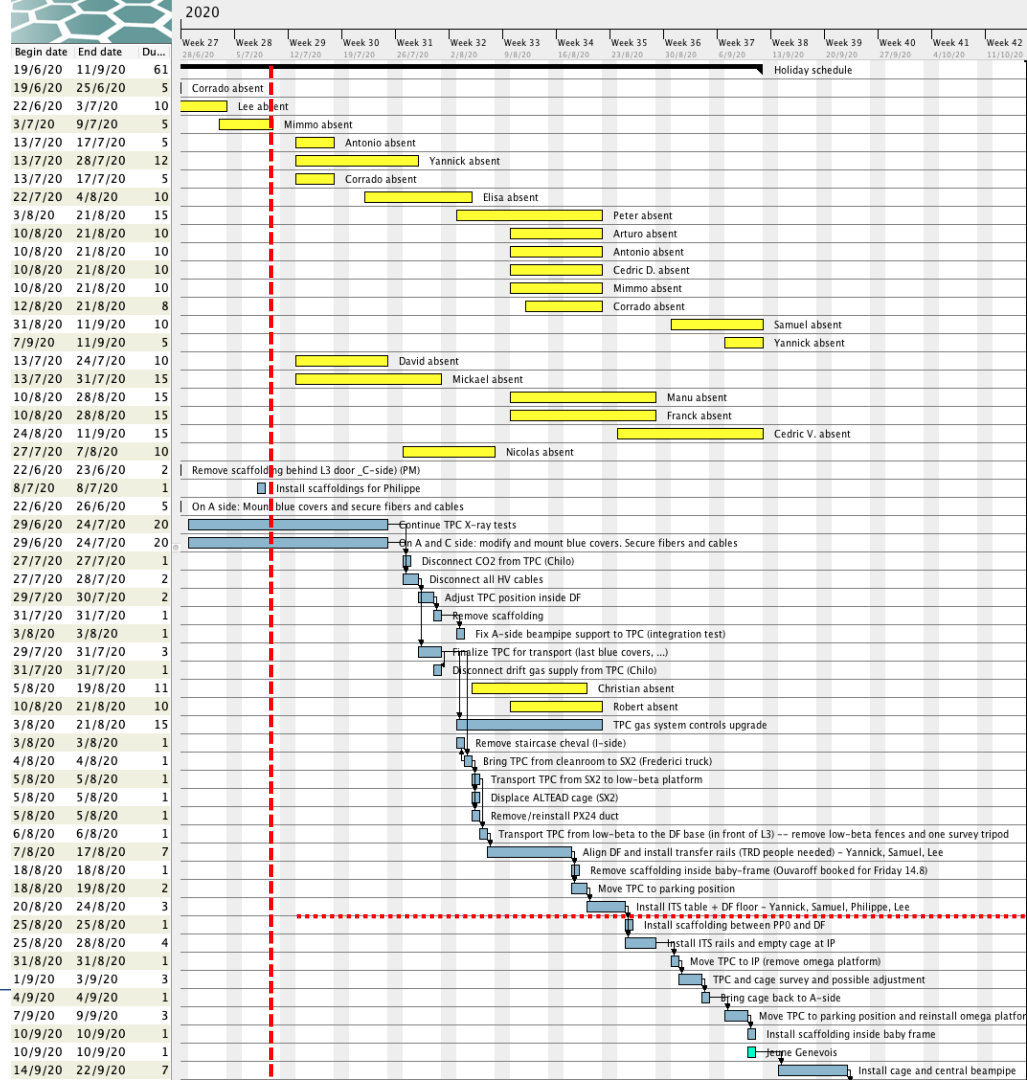
Sep 14th - Oct 9th install cage and central beampipe

Oct 12th - 15th - move TPC to IP - start connection TPC

Oct 16th - Nov 12th - prepare miniframe installation

Nov 13th - 17th - reinstall miniframe





WPA today



Key dates



Activity	v36 (pre-Covid)	v39 (June TB)	v41
Open cleanroom roof, cage insertion test	16 Mar 2020	29 Jun 2020	-
Move TPC to SX2	6 Apr	21 Jul	4 Aug
Install TPC (parking position)	7 – 30 Apr	22 Jul – 31 Aug	5 Aug – 9 Sep
Install cage and central beampipe	4 May – 1 Jun	1 – 30 Sep	14 Sep – 9 Oct
Move TPC to IP	2 – 4 Jun	1 – 6 Oct	12 – 15 Oct
Install Miniframe	25 – 26 Jun	4 – 6 Nov	13 – 17 Nov
FDD-C installation	First half Aug	Before 6 Nov*	
FDD-A installation	1 – 10 Sep	30 Nov – 7 Dec	4 – 11 Jan 2021
MFT & FIT-C installation and checks	30 Jun – 10 Aug	16 Nov – 8 Jan 2021 Disconnect MFT 12 Oct	30 Nov – 22 Jan Disconnect MFT 26 Oct
ITS installation and checks	11 Aug – 2 Nov	11 Jan – 2 Apr Disconnect ITS 5 Oct	25 Jan – 16 Apr Disconnect ITS 12 Oct or 26 Oct (+2w installation)
FIT-A installation	3 – 9 Nov	5 – 9 Apr	19 – 23 Apr
ITS & MFT commissioning time	1 ½ months (6w)		
ALICE global commissioning time	3.5 months (16w)		
End of LS2 – stop UX25 access (baseline) Contingency baseline option	1 May 2021 0 months	1 Feb 2022 4.5 months	1 Feb 2022 4 months
End of LS2 – stop UX25 access (option 1) Contingency option 1	-	1 Nov 2021 1.5 months	1 Nov 2021 1 month

* Requires LHC tunnel access → to be done before cool down S23 (starting in w46 2020) or between w1 and w5 2021



CR3 status (A.Augustinus)

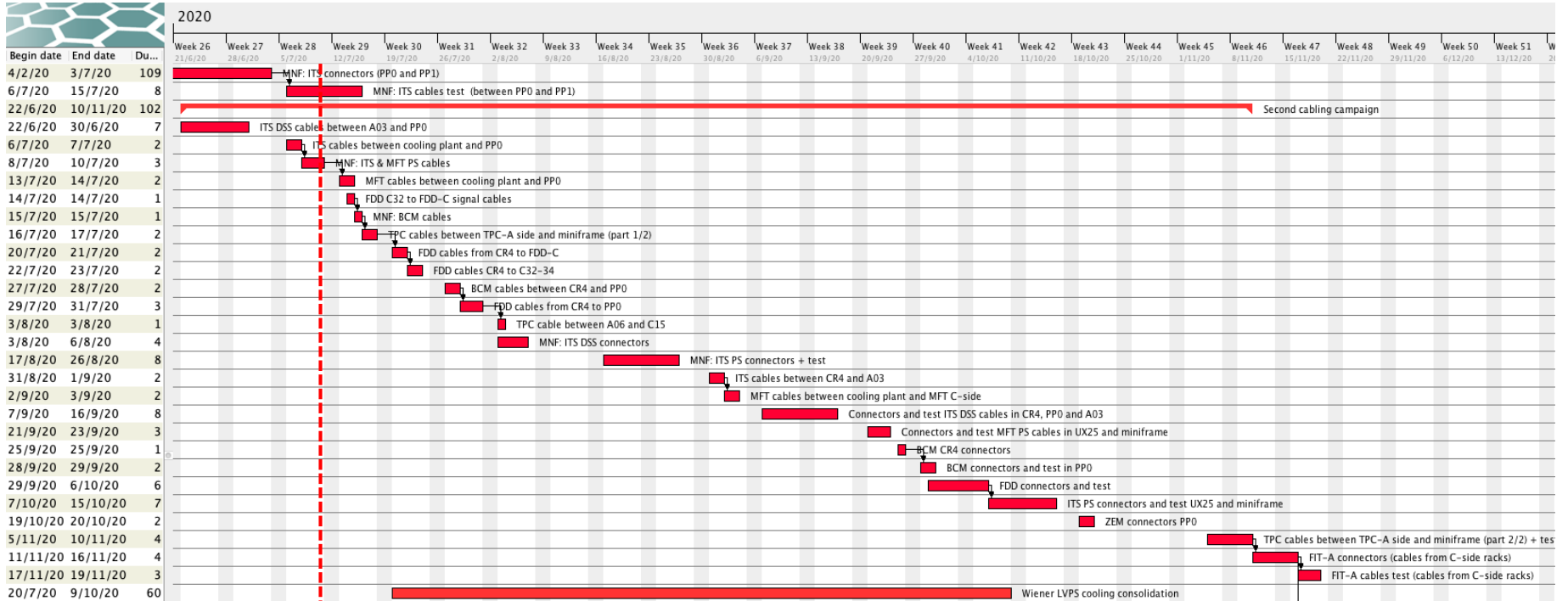
- February
 - Modify water circuit (add TA valves CR3 and CR4) – kept DCS up and running – DONE (10.02 – 21.02)
 - Additional rack installed for extension of main network starpoint outside CR2
 - Arrival of new racks (25.02)
 - Installation 1st row of racks (26.02)
- March, April, May
 - *COVID closure*
 - Arrival of new servers (28.04, originally foreseen end of March)
 - Installation of the servers in the new racks – DONE (finished 15.05)
 - Remove TOF cluster – DONE (26.05), last racks removed – DONE (28.05)
- June
 - Installation of 2nd row of new racks - DONE (03.06)
 - Re-installation TOF cluster – DONE and tested (08.06)
 - Installation network fibres for network – DONE (25.06)
- July – August – September
 - Adapt electrical installation for (extended) starpoint outside CR2 – week 28
 - Reconnection new racks to electricity – week 29
 - Installation of network infrastructure (some network interruptions to be foreseen, details to be defined with IT-CS) – dates t.b.c.
 - Working on alternative, temporary, network solution available in August to not delay commissioning of new servers too much
 - Migration from old servers to new servers (first central systems, then detector systems)
- October – November
 - Removal of old servers and last old racks

Cabling progress

- EN-EA cabling team back at work since May 18 (5 people 100% dedicated to ALICE)
- Currently working 3d/w in miniframe and 2d/w in UX25 cavern
- 1st cabling campaign (500kCHF) started in March 2019 – completion by mid July 2020
- 2nd cabling campaign (120kCHF) started in May 2020:
 - 80% cable pulling by end July
 - Assembly connectors in Miniframe in August (reduced team)
 - Complete connectors and test: September - October



Cabling: new planning



Cabling progress

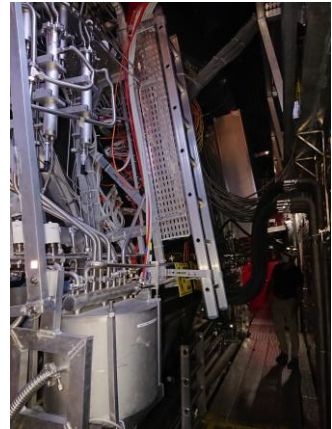


EN-EL interventions

- 18kV, 3.3kV and LV network maintenance: 20-24 Jan 2020 – Done
- AUG P2: Monday 27 January 2020 – Done
- Auto transfer test: 17 July 2020 → not affect LHC (we will be repowered from the machine network)
- **Test secours (10 min at 6:00 AM): 30 July 2020**
 - Will cut everything that is not on UPS (max. 10 minutes CERN-wide cut)
 - At P2 the racks in UX and CR are not affected, nor CR0
 - Only general services will be cut
 - This will affect all P2 buildings including SX2 and SXL2 (cleanroom)
 - Services like gas, circulation of mixed and iced water and ventilation will be affected
 - As this is CERN-wide, also offices, labs etc. in Meyrin will be affected.
- AUG Meyrin (zone administrative): 4 Sep 2020 (tbc)

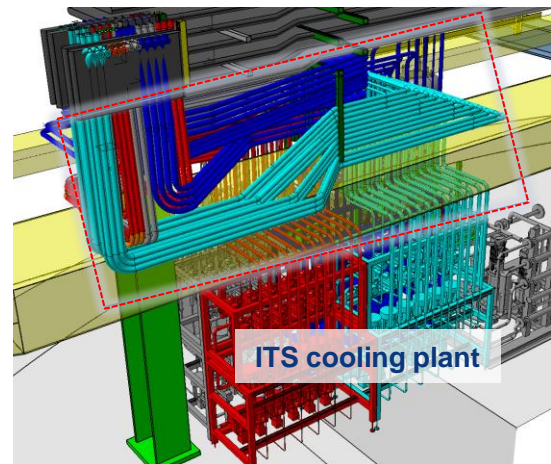
Optical fibers (EN-EL)

- Done:
 - Installation and test **TPC** fibers between CR4 and CR1
 - Installation and test fibers for **IT** (for upgraded network) from CR2 starpoint to CR1 and to CR3
 - Procurement 2 x **FDD** optical cables (requested in March 2020) → fibers ordered but not yet received
 - Optical measurement fibers **SR2-SX2**
- To be done:
 - Test **HMPID** fibers (probably 13.7)
 - Installation 6 trunk cables between IT1-IT2 (CR0) → Sept-Oct
 - Cleaning **TRD trigger fibers** connectors and replacement of damaged ones
 - Installation TPC optical fiber in the cavern between A and C-sides
 - Unfold and connect **ITS** and **TPC** trunk cables → after Miniframe installation in November



ITS and MFT inox pipes

- Work restarted in June: finalize ITS and MFT connections to cooling plant
- Rampower pipework will take ~2 more weeks
- Installation of 8 MFT pipes (MFT RO crates) will be done by ALICE technicians (Philippe, Cedric)
- P test of all lines will be done by ALICE technicians (Philippe, Cedric)
- Verified ITS cooling plant installation sequence (transport at Meyrin, P2, installation in the pit)



Remaining pipework to be done

EN-CV interventions

- **Big maintenance:**
 - SF: from Nov 2019 to mid Jan 2020. NO impact on ALICE as both magnets will be OFF – done
 - UW: **stop UX mixed water** for 2 days in week 41/2019 (October) – Tue 8 and Wed 9 Oct – done
 - SU: various small perturbations + 1 day **stop all cooling UX** + 1 day **stop all cooling SXL2** in week 16/2020 (April) – **not done**
- **Small maintenance:**
 - UW: from mid Aug 2020 to mid Sep 2020. **Stop mixed water UX** for 1 day in week 37/2020 (September).
 - SF+SU: weeks 45-47/2020: cleaning towers (stop SF 1 week) + 1 day **stop all cooling UX**.
- Renovation transformer UIAC220 in w10/2020 → transparent but need to reduce mixed-water consumption
- Stop demineralized water from 17 to 20 December 2019
- **Ventilation:**
 - ~~SG2 (2019): w7/2019~~
 - ~~SG2 (2020): Tue-Wed - w3/2020~~
 - ~~Gas extraction: w8/2019~~
 - ~~UX25 cavern: w2/2020~~
 - ~~MCH and MTG: Mon-Thu - w3/2020~~
 - L3: need to replace extractor → 2 days stop → will cut flammable gases (maybe in week 17) - Done
 - ITS: → will be done before end June
- **Raw water:**
 - Test after Apr 2019. Short interruption (1 day), can be used tap water during the test.

Racks status

- Racks currently powered on:
 - HMPID: I01, I02
 - PHOS-CPV: A16, A17
 - CTP: C21, C22, C24, C25, C26, C27 (CTP) (and VME crates on)
 - MCH: C08, C10, C37, C39
 - TOF: O03, O04, O05, O30, O31, O32, I03, I04, I05, I30, I31, I32
 - TRD: O06, O08, O26-29, I06, I08, I26-29, C16-19, C29
 - Dcal, EMcal: A14, O12
- Detectors can be powered, compatible with current activities inside L3

Other activities

2020:

- Renovation PX24 access system (PAD-MAD): w33-34 (10-21 Aug)
- Renovation PM25 access system (PAD-MAD): w41-43 (5-23 Oct)
- LASS functional test: ~~no access to UX25 on Friday 30 Oct 2020 whole day (weekend 31 Oct /1 Nov as contingency)~~
- LASS global verification of entire LHC: ~~1 day no access to UX25 (date tbc)~~
- BIW test: ~~no access underground on 5 and 6 Oct 2020 from 18:00 to 00:00~~

2021:

- For powering permit: w1 2021 (tbc) (needed to start LHC powering test)
- For RF recommissioning LSS4: w7 2021
- For powering permit, following UPR53 installation: date tbd
- For beam permit: date tbd
- LHC sector test (beam through ALICE): ~~no access to UX25 from 26 to 29 March 2021~~

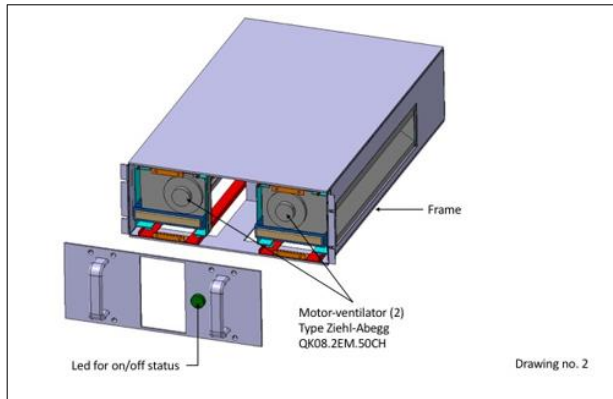
Work regie des eaux Gessiennes



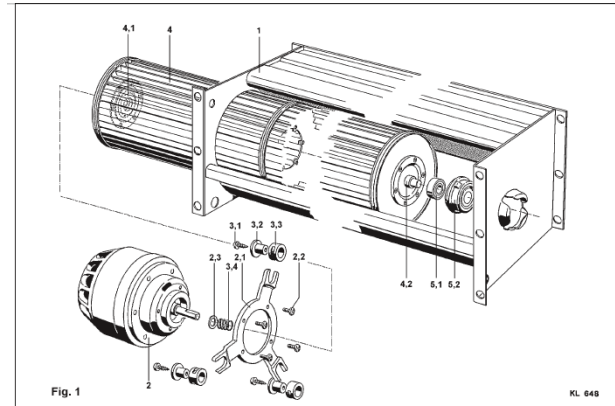
- Dans le cadre du renouvellement du réseau d'assainissement des eaux usées, mené par la Régie des Eaux Gessiennes à SAINT-GENIS-POUILLY, le chemin de la Tatte sera en travaux à compter du 22/06/2020 et pendant les mois de juillet et août 2020.
- Il est prévu de maintenir l'accès au point 2 ALICE pendant toute la durée du chantier. Vous êtes toutefois invité à la réunion de chantier du mercredi 24/06/2020 à 14h00.
- → Access to P2 won't be blocked at any time ←

New rack turbines

- All 85 units (200kCHF) ordered: <https://edh.cern.ch/Document/SupplyChain/MAG/8289388>
- Technical specifications: EDMS 1963491
- ALICE units will be made available from end-August 2020
- Installation immediately afterwards, transparent for users (ALTEAD + P2 tech.)



Ventilation unit front view



Pluggable motor

Consolidation Wiener LVPS

- 193 water cooled power supplies in total (LV and VME)
- 14 MCH LVPS already shipped to EN-EA
- Rework in batches (1/week), to be started in the coming days:
 1. Disconnection and deinstallation → detectors
 2. Conditioning → ALTEAD + P2tech
 3. Transport to EN-EA (Meyrin)
 4. Rework and test → EN-EA + P2tech (Evgeny and Philippe)
 5. Transport to P2
 6. Reinstallation → detectors
- Preliminary plan is to start week 30, finishing end September, early October
 - Andre will contact each detector to establish a detailed planning

	LV	VME
CTP		11
EMC	8	
FIT (AD,T0,V0)		6
HMPID		2
MCH	17	
MTR	8	2
PHOS	9	1
Spare VME		2
TOF		3
TPC	22	
TRD	101	1
	165	28



6 modules Wiener LVPS



Training with Wiener (June 4th)



Repair campaign in 2016

IMPACT list (1/2)

Activity	Status	Resp. Group	Facility	System	Title
156563 ↓ →	In progress	EP-UAI	Alice	TPC	TPC Upgrade in the SXL2 cleanroom (Covid Restart Phases 1 and 2)
156549 ↓ →	Approved	BE-ICS-AS	Alice	S - General Safety	Annual Maintenance Red Emergency Phones (Point 2 - ALICE)
156519 ↓ →	In progress	EN-EA-AS	Alice	Tech. Infrastructure	ALICE - Cabling activities EA - connectors assembly
156496 ↓ →	In progress	EP-UAI	Alice	TPC	CR1 - add additional server to TPC setup
156490 ↓ →	In progress	EP-UAI	Alice	HLT	CR0 - Infiniband cable tests and installation preparations
156451 ↓ →	In progress	EP-UAI	Alice	TOF	TOF DRM2 installation
156378 ↓ →	In progress	EP-UAI	Alice	Muon Tracker	ALICE MUON TRACKING: work in cavern (renewal)
156248 ↓ →	In progress	EN-EA-AS	Alice	Tech. Infrastructure	ALICE - Cabling activities EA - tests HV cables TPC miniframe-UX25...
156087 ↓ →	In progress	EP-DT-FS	Alice	TRD	ALICE TRD recuperation volume pressure test
156058 ↓ →	In progress	SMB-SE-CBS	Alice	Other	Ajustement plaque Sol
156027 ↓ →	Approved	EN-EL-EPM	Alice	Electricity	Alimentation Rack Startpoint
155951 ↓ →	Approved	EP-UAI	Alice	Muon Trigger	MID readout crate installation INSIDE
155929 ↓ →	In progress	EP-UAI	Alice	CTP	Installation of CTP upgrade
155832 ↓ →	In progress	TE-VSC-BVO	Alice	Beam pipe	Maintenance of the LHC beam vacuum Gas Injection System
155802 ↓ →	In progress	EN-EA-AS	Alice	Tech. Infrastructure	ALICE - Cabling activities EA - tests HV cables TPC C side
155781 ↓ →	Approved	EN-HE-HEM	Alice	Lifts	PX24 ALICE JULY LIFT MAINTENANCE
155767 ↓ →	Approved	EN-HE-HEM	Alice	Lifts	PX24 L3 JULY LIFT MAINTENANCE
155616 ↓ →	In progress	EN-EA-AS	Alice	Tech. Infrastructure	ALICE - Cabling activities EA - pulling cables
155550 ↓ →	In progress	EP-AIO	Alice	DAQ	CR1 Network Equipment reception
155340 ↓ →	In progress	EP-AIO	Alice	Other	Miniframe modification TC technicians

IMPACT list (2/2)

Activity	Status	Resp. Group	Facility	System	Title
155104 ↓ ⇒	In progress	EP-UAT	Alice	SCT	ATLAS SCT 48V power supply development
155100 ↓ ⇒	In progress	EP-UAT	Alice	SCT	ATLAS SCT 48V power supply development
154732 ↓ ⇒	In progress	EP-UAI	Alice	Other	the data analysis
154675 ↓ ⇒	In progress	EP-DT-DI	Alice	Solenoid (L3)	ALICE -Magnet Control System upgrade
154510 ↓ ⇒	In progress	EP-AIO	Alice	Other	TSO access to bldg 301/160/161
154490 ↓ ⇒	In progress	EP-UAI	Alice	TRD	TRD Wiener PSUs labelling and disconnection
154395 ↓ ⇒	In progress	EP-UAI	Alice	TPC	CR1 access during TPC Upgrade in the cleanroom (Covid Restart Ph...
154283 ↓ ⇒	In progress	EP-ADE-TK	Alice	X - Experimental and...	FASER Tracker Plane Commissioning
153997 ↓ ⇒	In progress	EP-UAI	Alice	Other	MFT activities (Covid Restart Phase 1)
153782 ↓ ⇒	In progress	EP-DT-EO	Alice	ITS (all)	Cage interface verification in the SXL2 (Covid Restart Phase 1)
153523 ↓ ⇒	In progress	EP-AID-DC	Alice	Other	Racks modification TC technicians
153269 ↓ ⇒	In progress	EP-UAI	Alice	EMCAL	EMCAL FEE testing/validation in EMCAL lab
152746 ↓ ⇒	In progress	EP-AID-DC	Alice	DCS	DCS activities on-site
152524 ↓ ⇒	In progress	EP-UAI	Alice	DAQ	Installation of DAQ services
151348 ↓ ⇒	In progress	EP-AIO	Alice	ITS (all)	Installation inox pipes (Rampower)
147068 ↓ ⇒	In progress	EP-AID-DC	Alice	DCS	DCS/DSS support interventions LS2 (2020)
146929 ↓ ⇒	In progress	SMB-SSL-CS	Alice	Other	Nettoyage caverne Alice et sanitaires
130410 ↓ ⇒	In progress	EP-AID-DA	Alice	DAQ	CR1 FLP team access
130340 ↓ ⇒	In progress	EP-UAI	Alice	TPC	TPC Upgrade in the SXL2 cleanroom (CORE)
107531 ↓ ⇒	In progress	EP-DT-EO	Alice	Other	P2 coordination and technicians activities

Day-by-day sequence w28



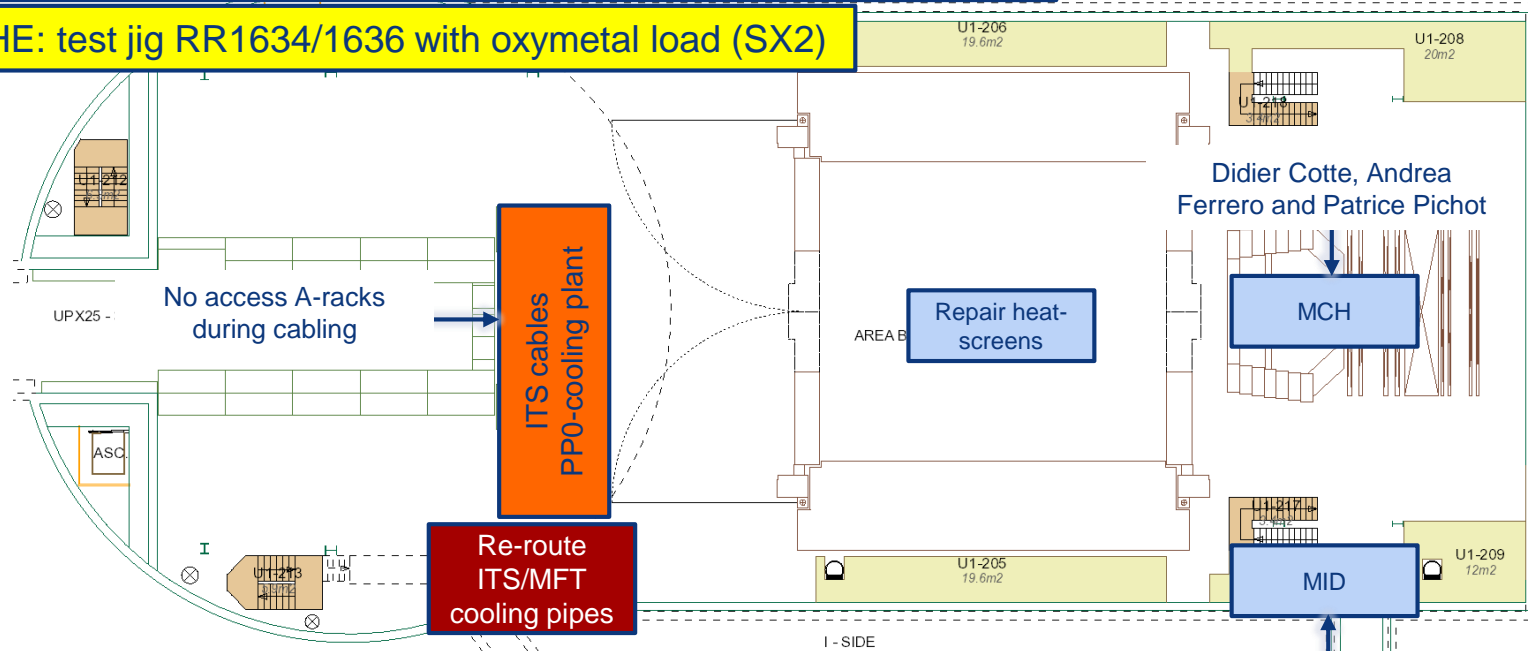
UX25 activities w28 – Mon 6 Jul 2020

Replacement PM25 lift (until 7 August) → LHC access via ALICE (PX24)

CR0 - Infiniband cable tests and installation preparations

CR1 - add additional server to TPC setup for HV current monitoring

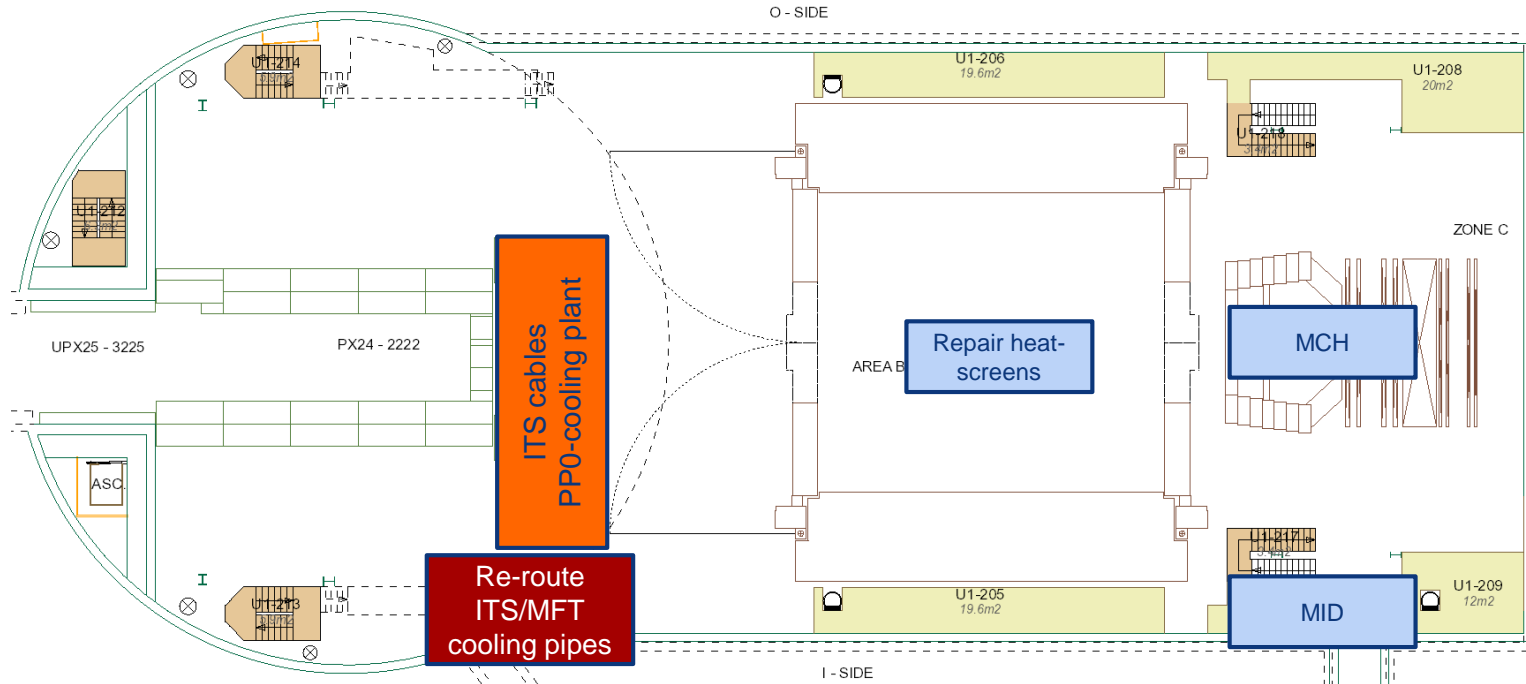
EN-HE: test jig RR1634/1636 with oxymetal load (SX2)



UX25 activities w28 – Tue 7 Jul 2020

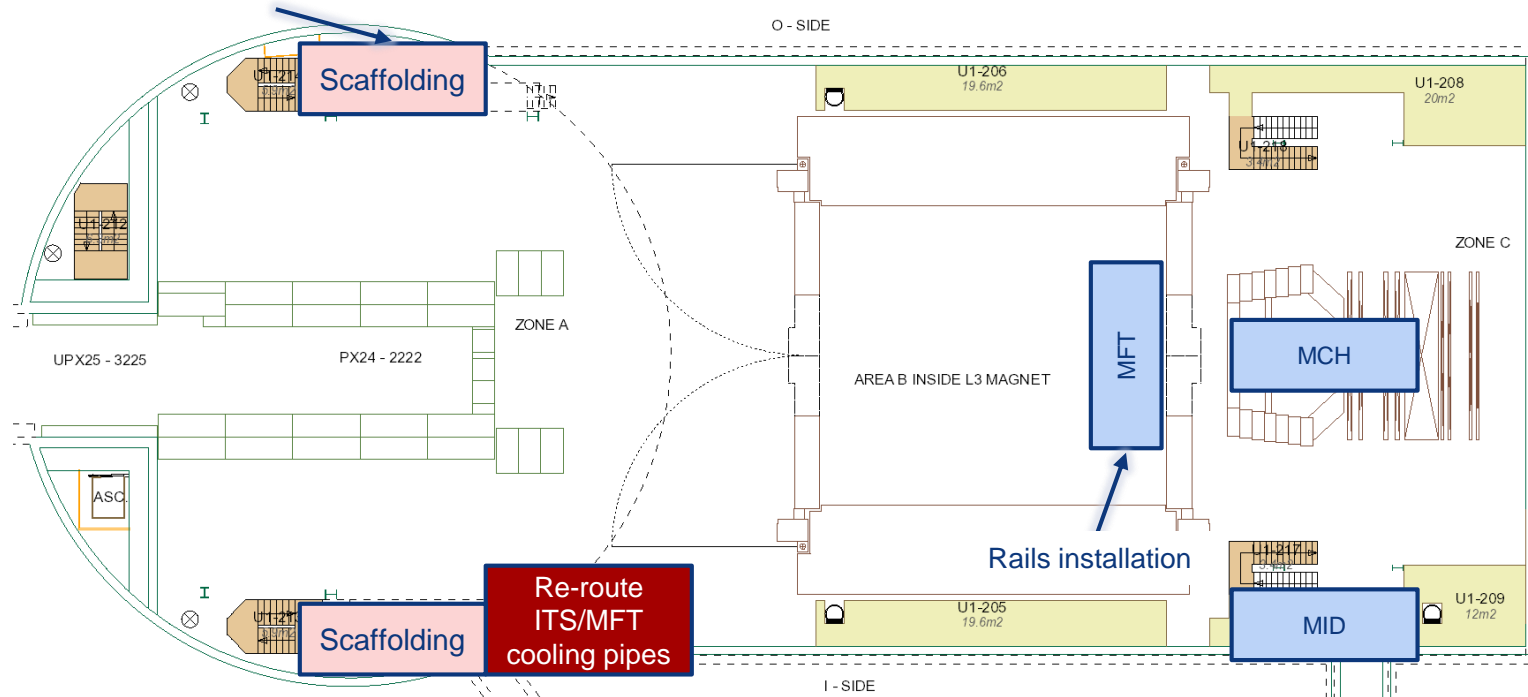
Cleaning cavern (Topnet): 13:00 to 15:00

CR0: install emergency lights, maintenance cooling units and other small works (Automation) (whole week)

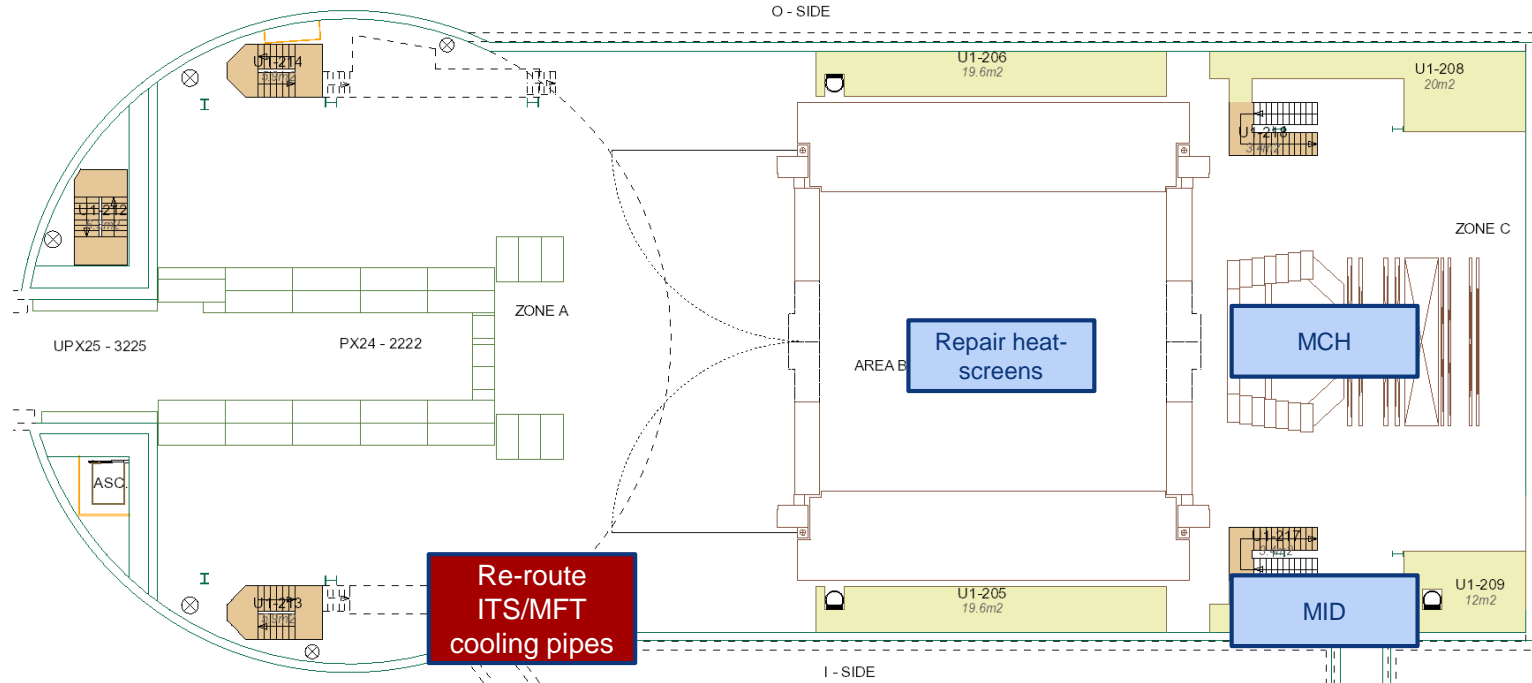


UX25 activities w28 – Wed 8 Jul 2020

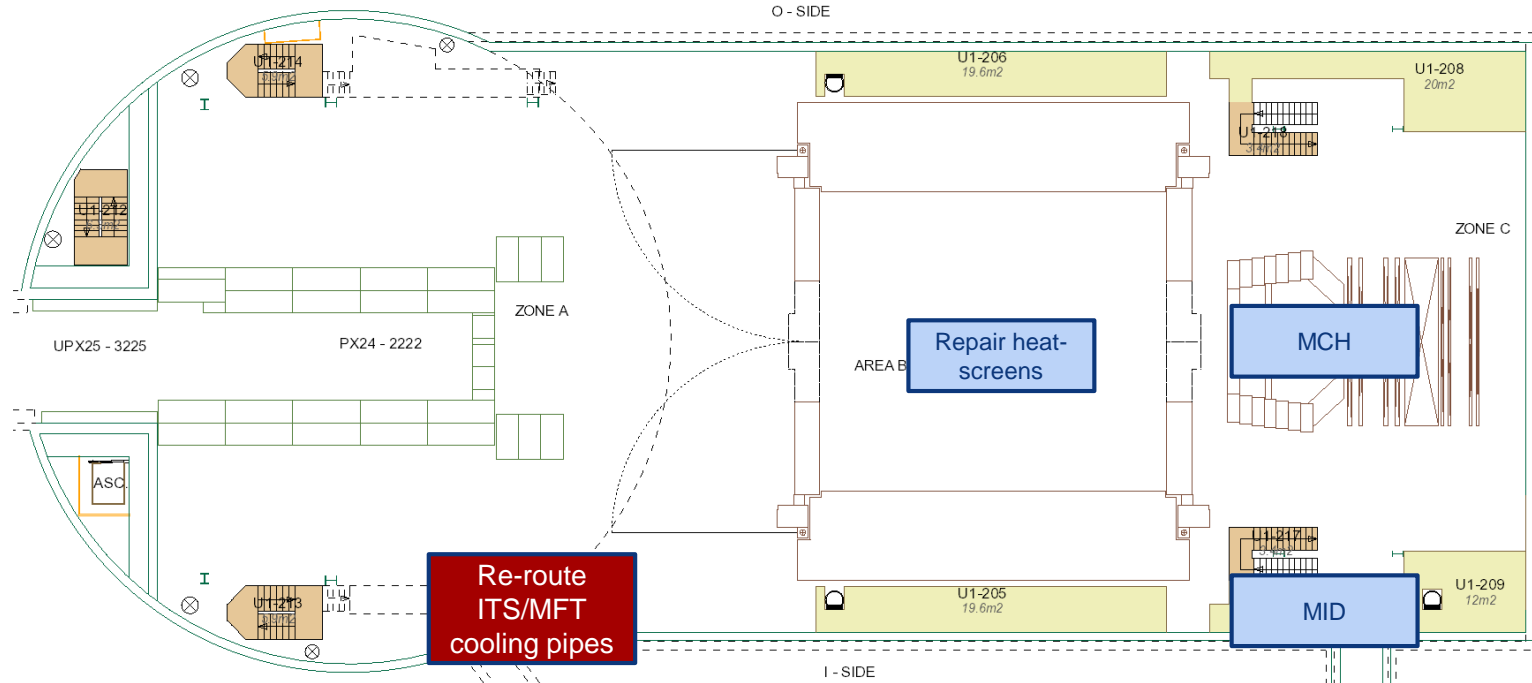
- Un échafaudage cote O, cote A, niveau 2.
- Un échafaudage mobile jonction coté I, rack A side, niveau 0
- Portillon temporaire sur crinoline niveau 7/8



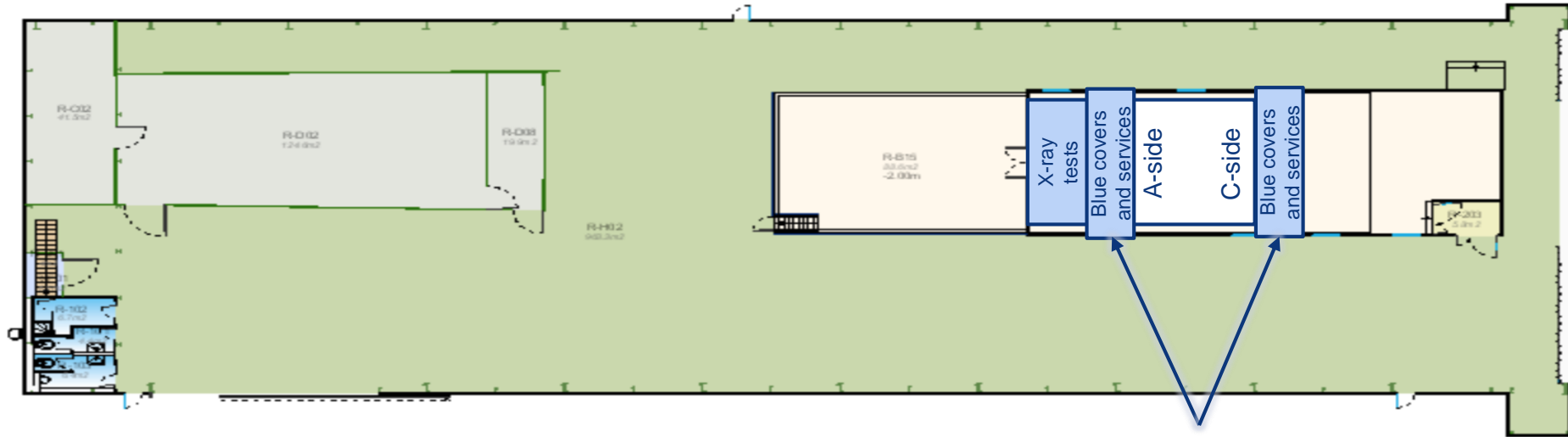
UX25 activities w28 – Thu 9 Jul 2020



UX25 activities w28 – Fri 10 Jul 2020

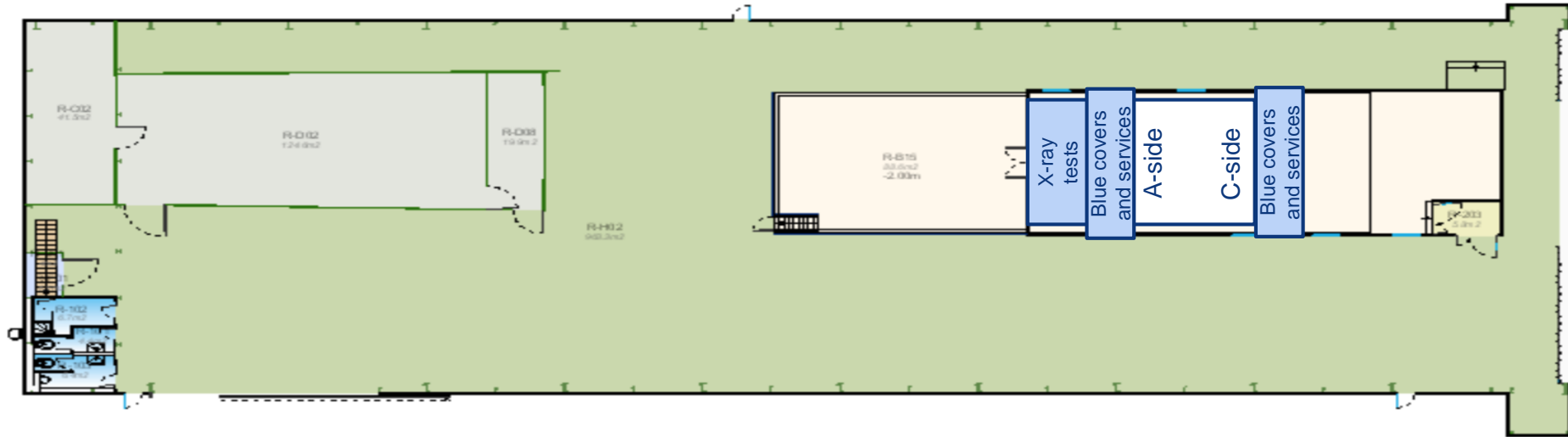


SXL2 activities w28 – Mon 6 Jul 2020

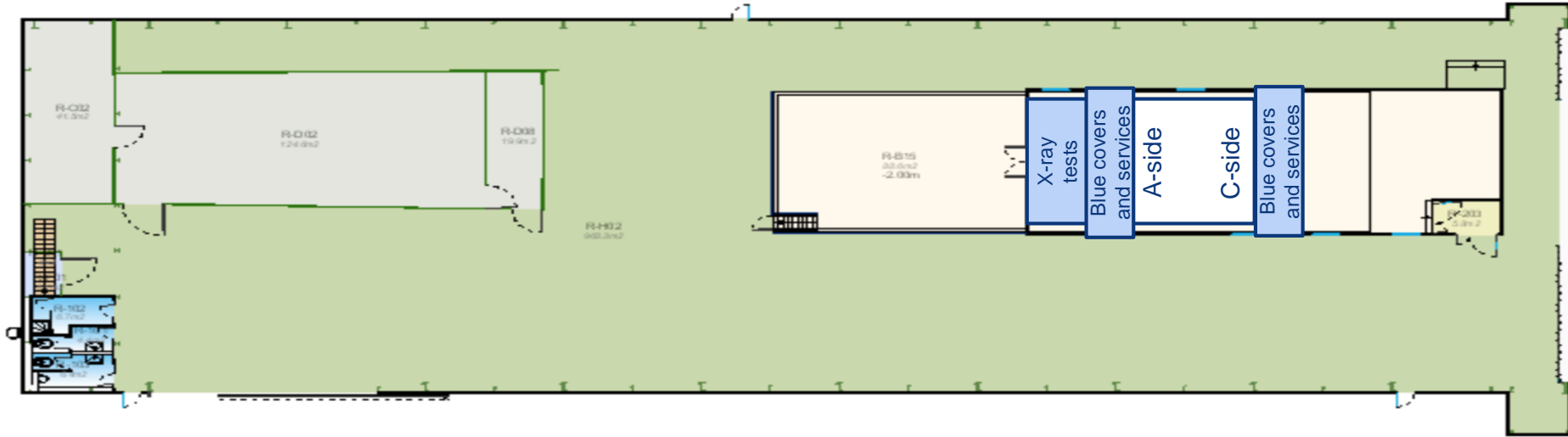


Modify and mount blue covers. Secure fibers and cables

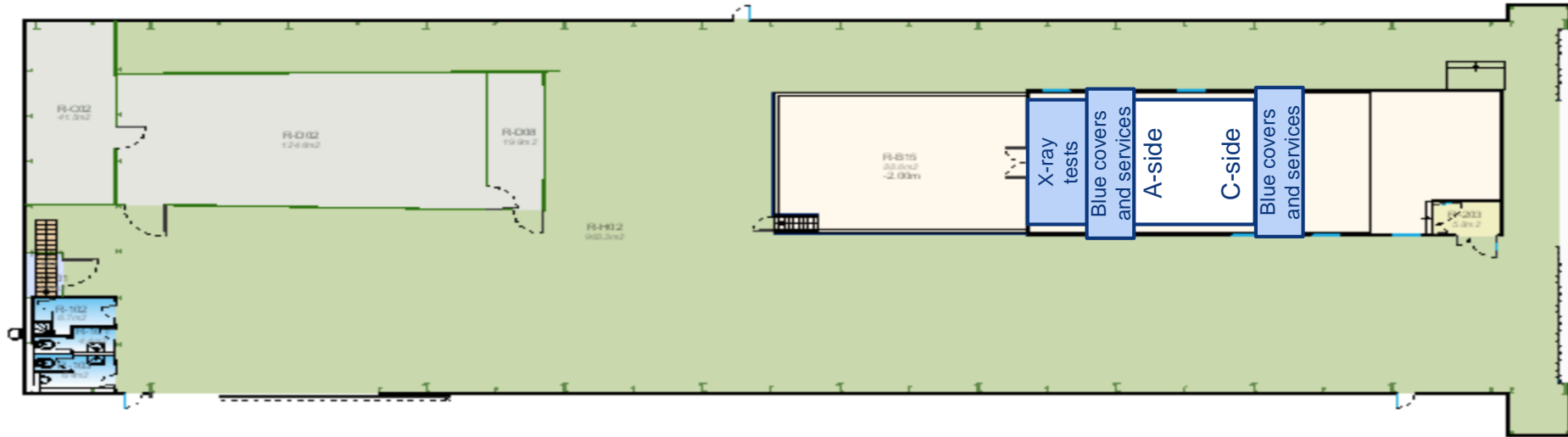
SXL2 activities w28 – Tue 7 Jul 2020



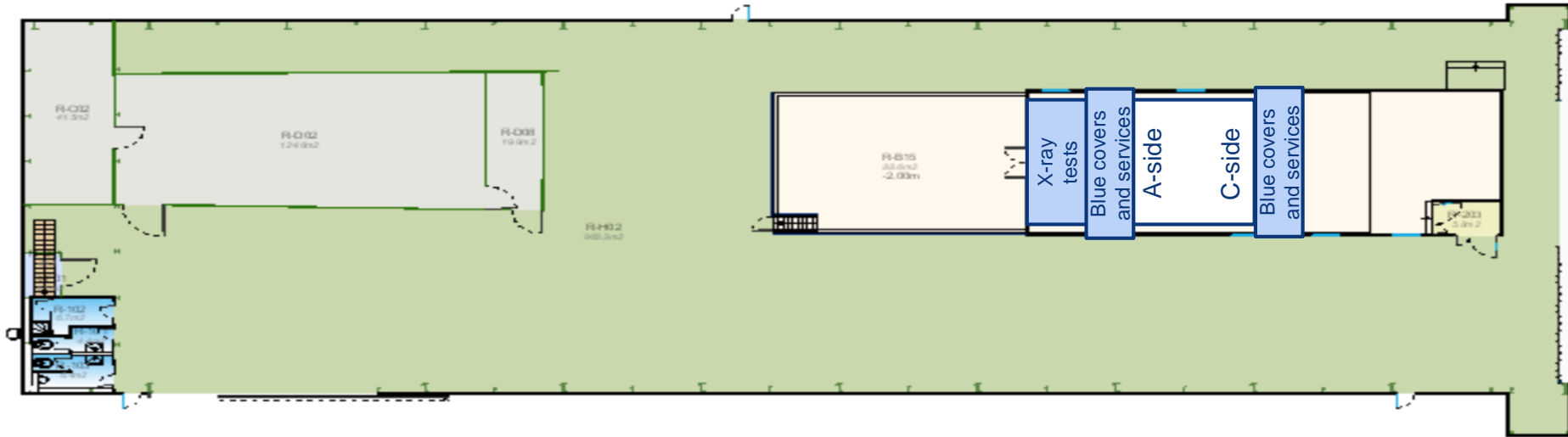
SXL2 activities w28 – Wed 8 Jul 2020



SXL2 activities w28 – Thu 9 Jul 2020

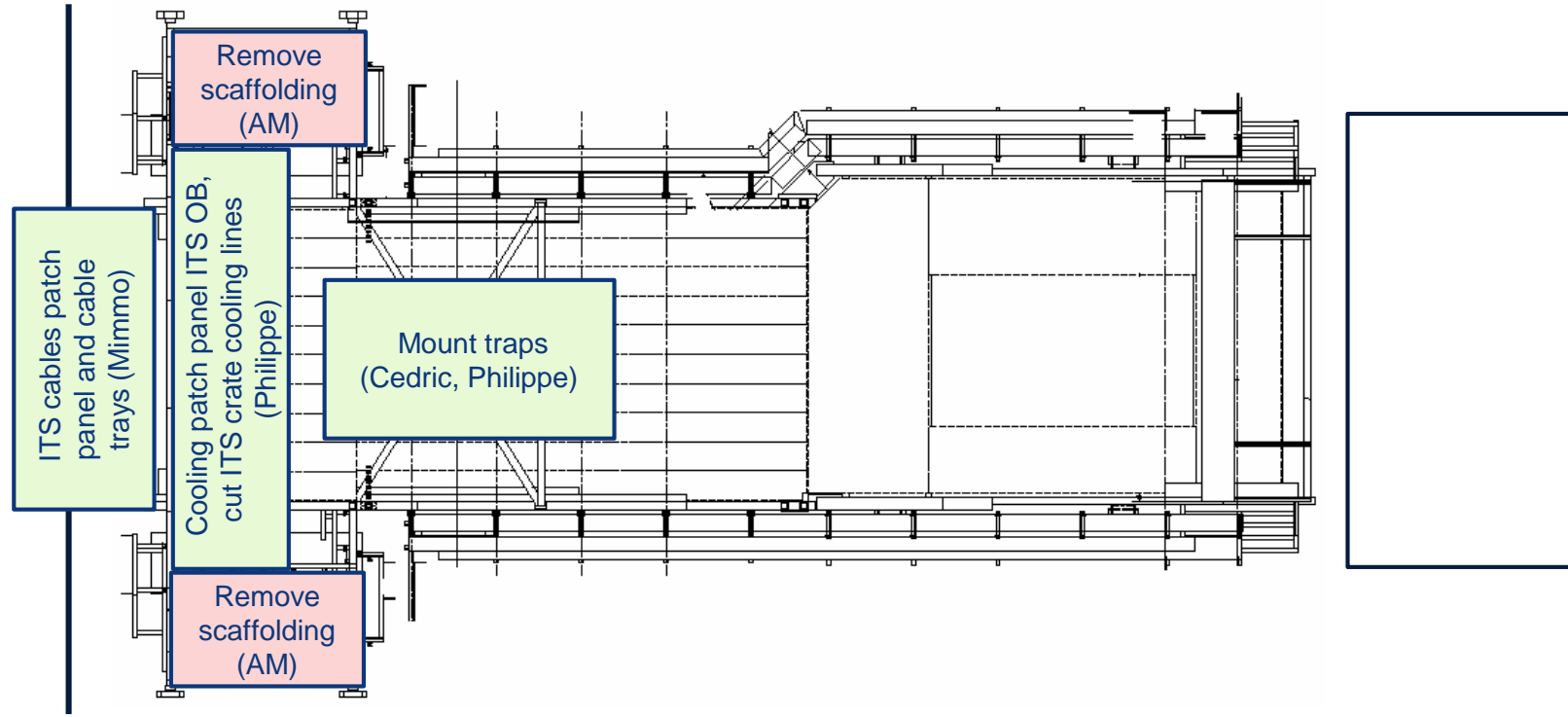


SXL2 activities w28 – Fri 10 Jul 2020



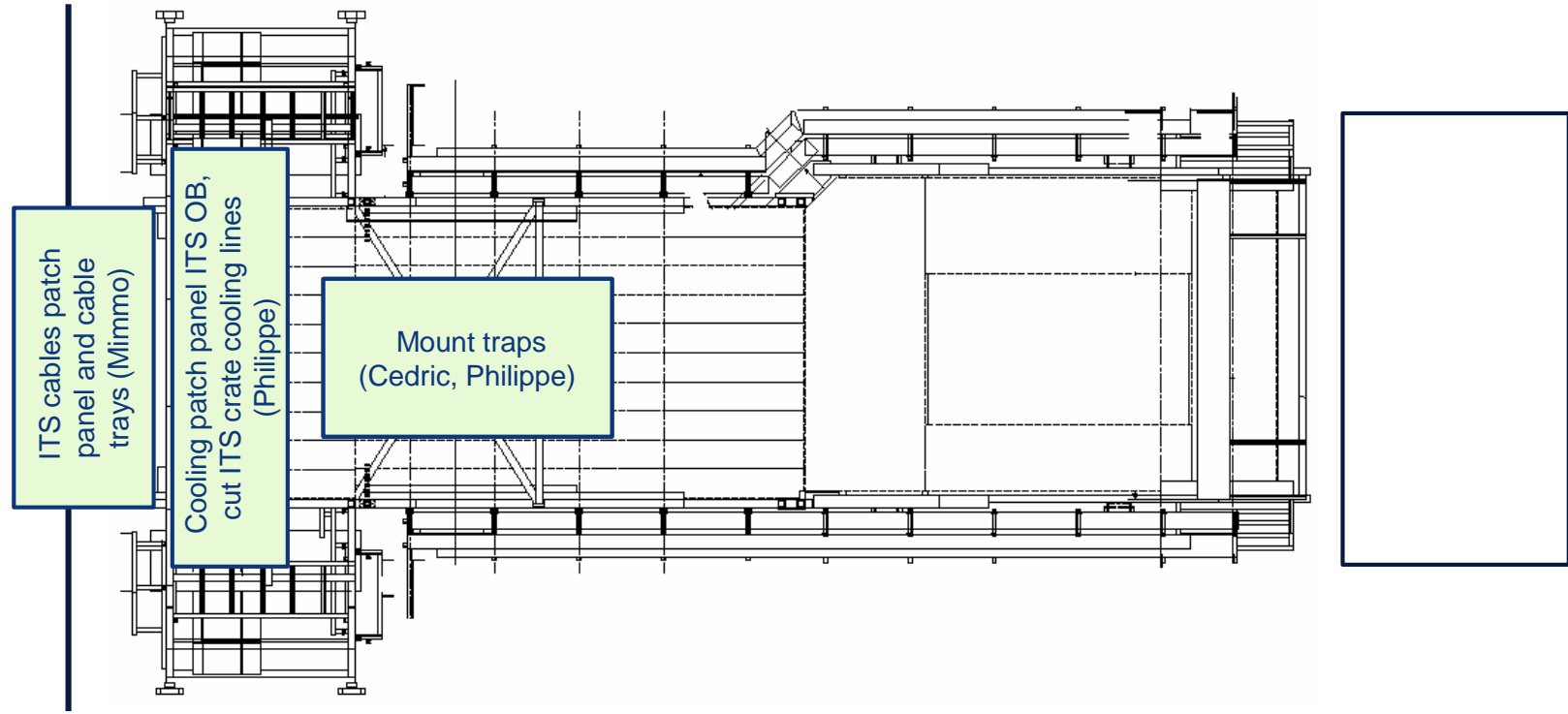
Miniframe activities w28 – Mon 6 Jul 2020

Assemble ITS air manifolds (Philippe, Cedric)

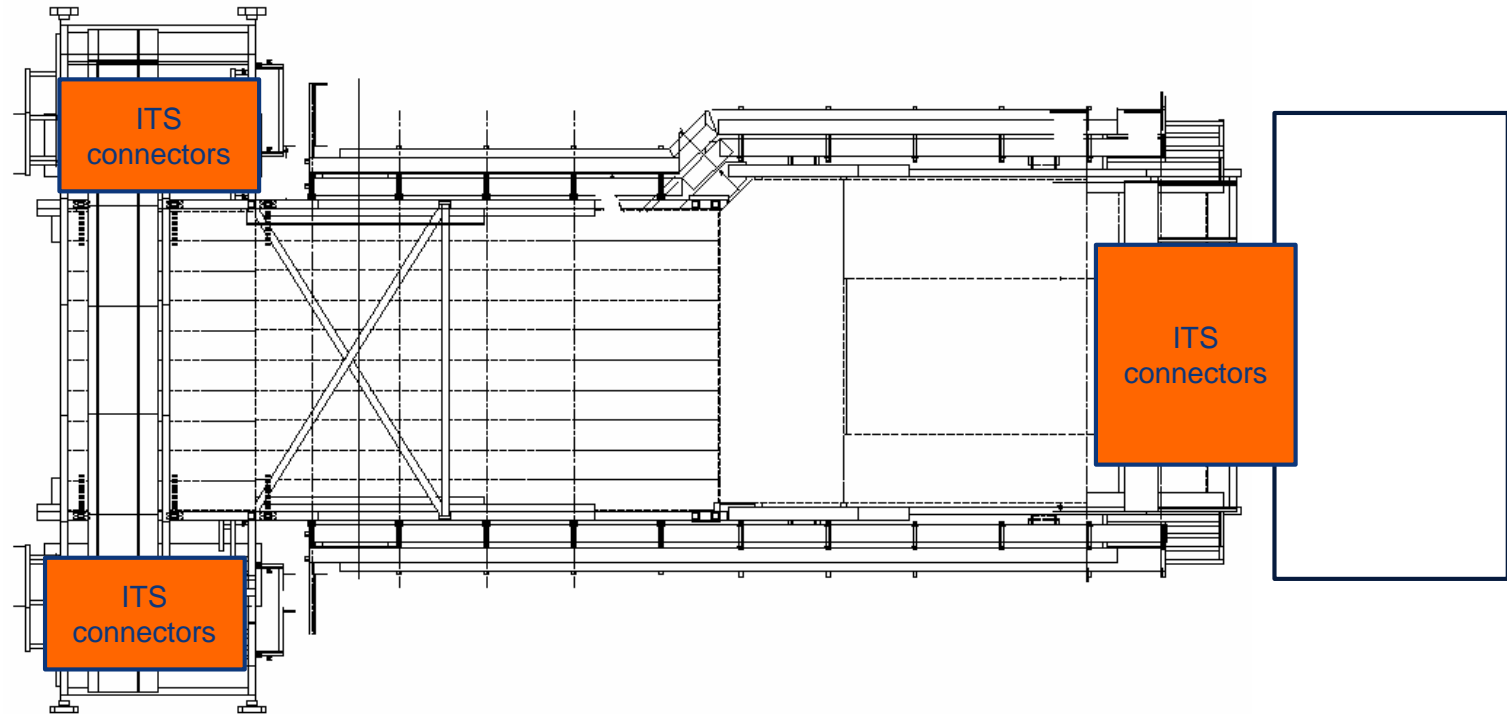


Miniframe activities w28 – Tue 7 Jul 2020

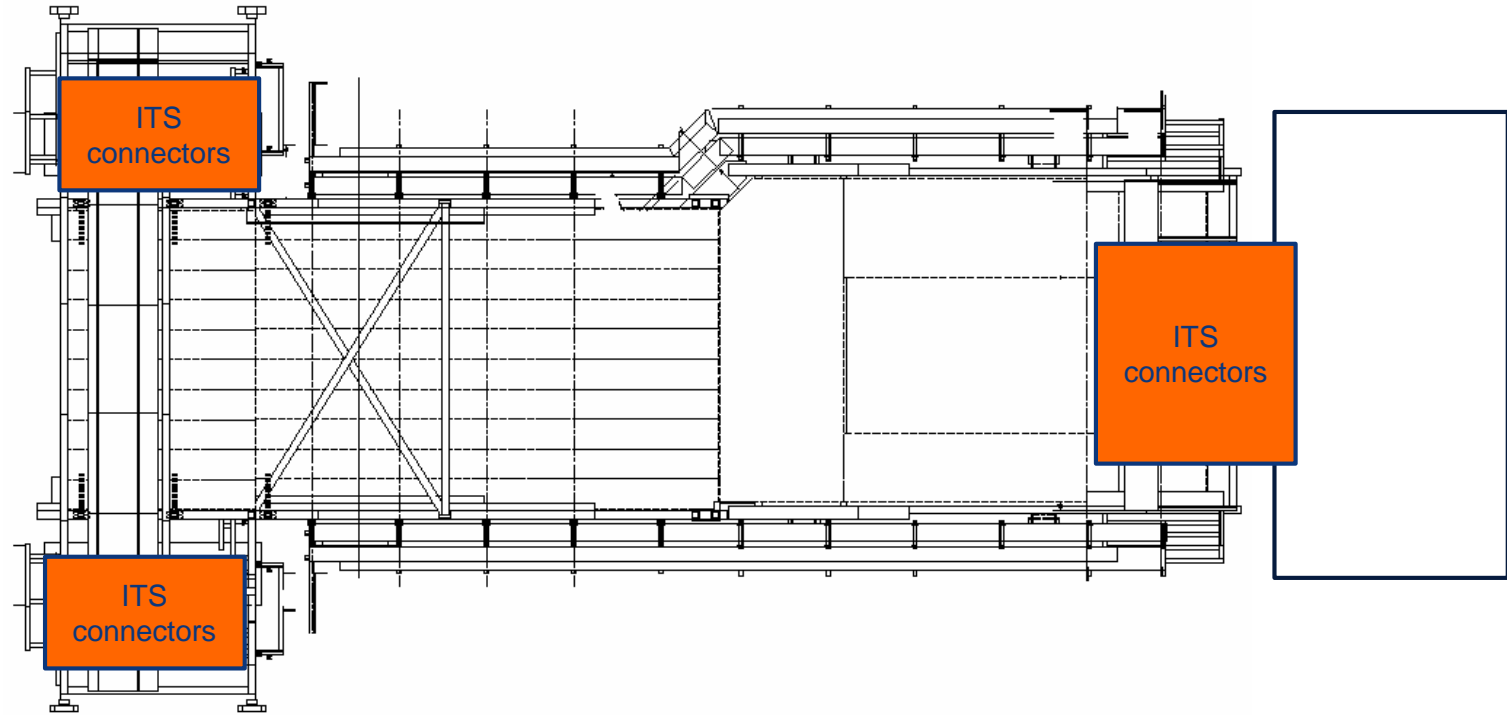
Assemble ITS air manifolds (Philippe, Cedric)



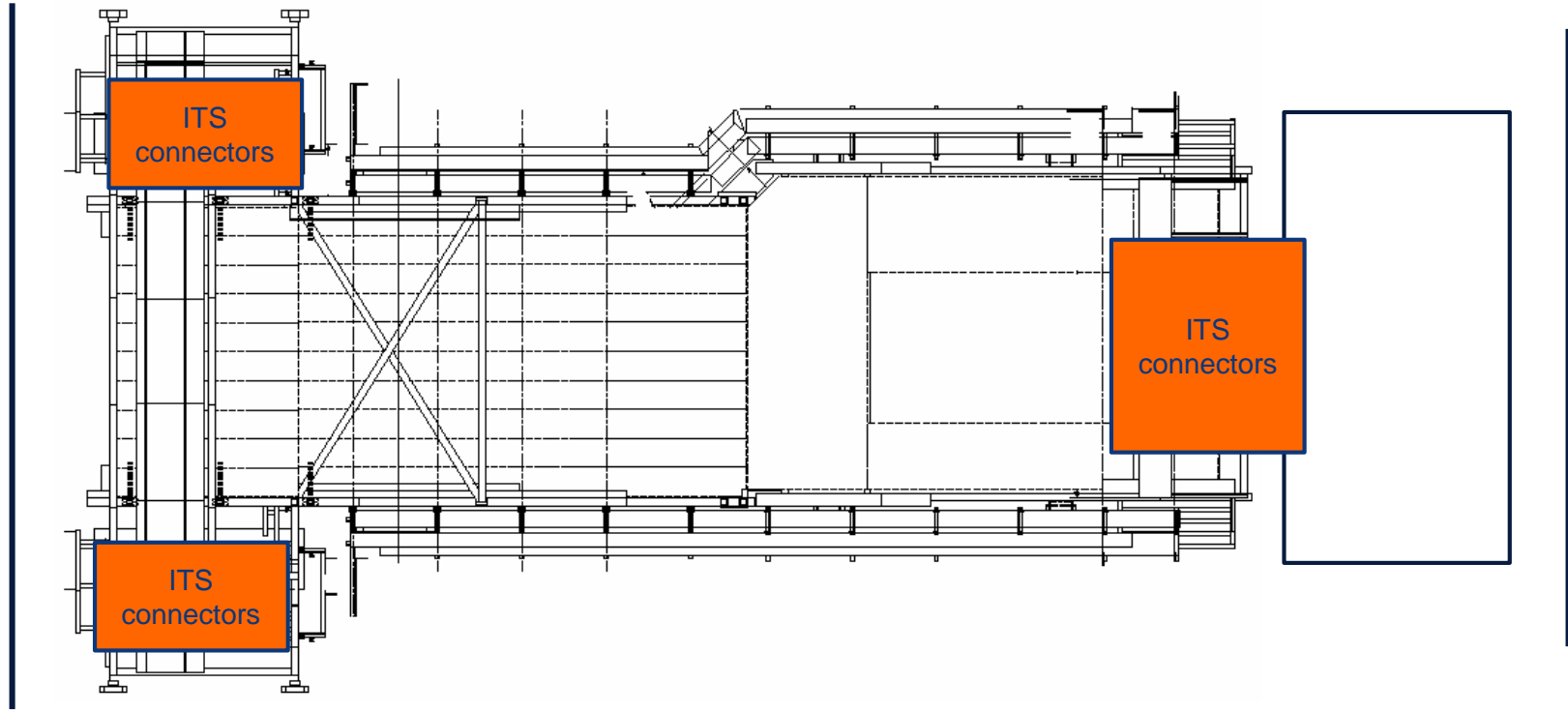
Miniframe activities w28 – Wed 8 Jul 2020



Miniframe activities w28 – Thu 9 Jul 2020



Miniframe activities w28 – Fri 10 Jul 2020

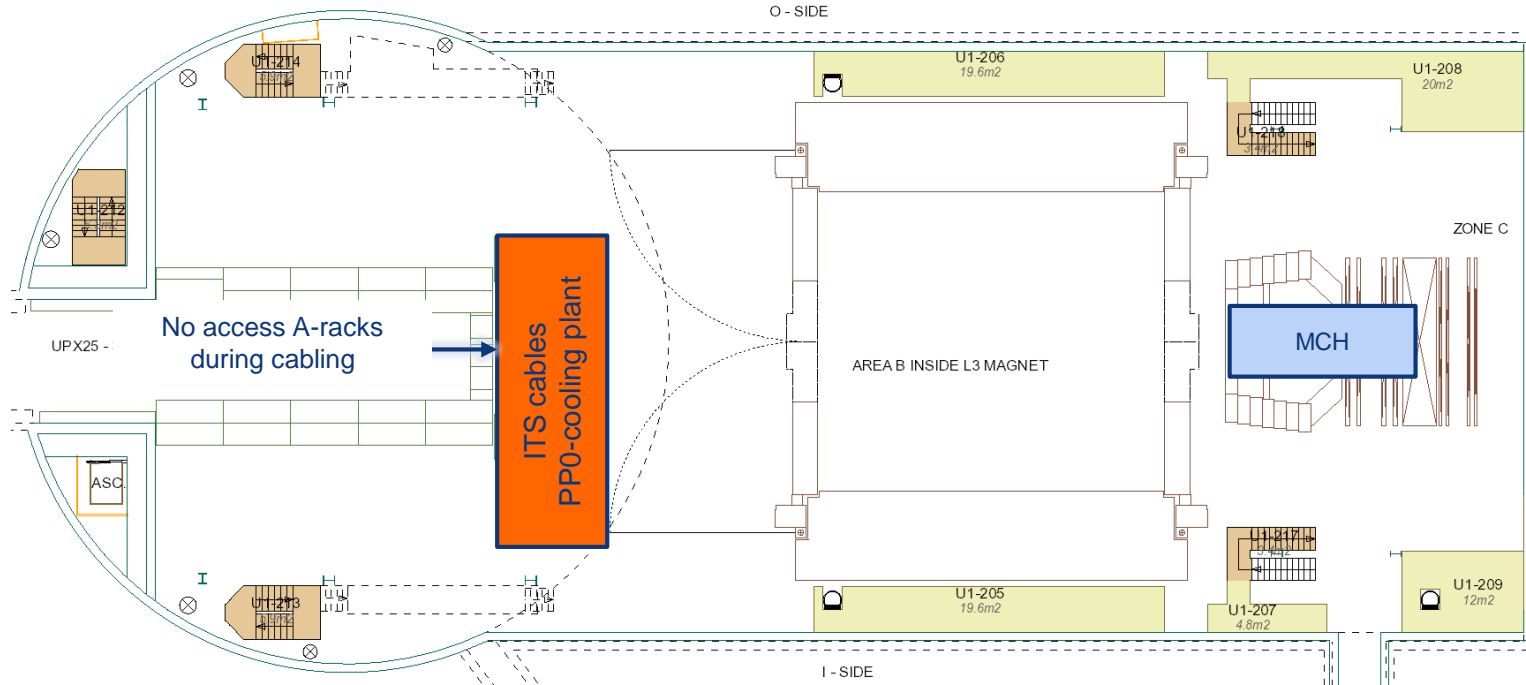


Day-by-day sequence w29



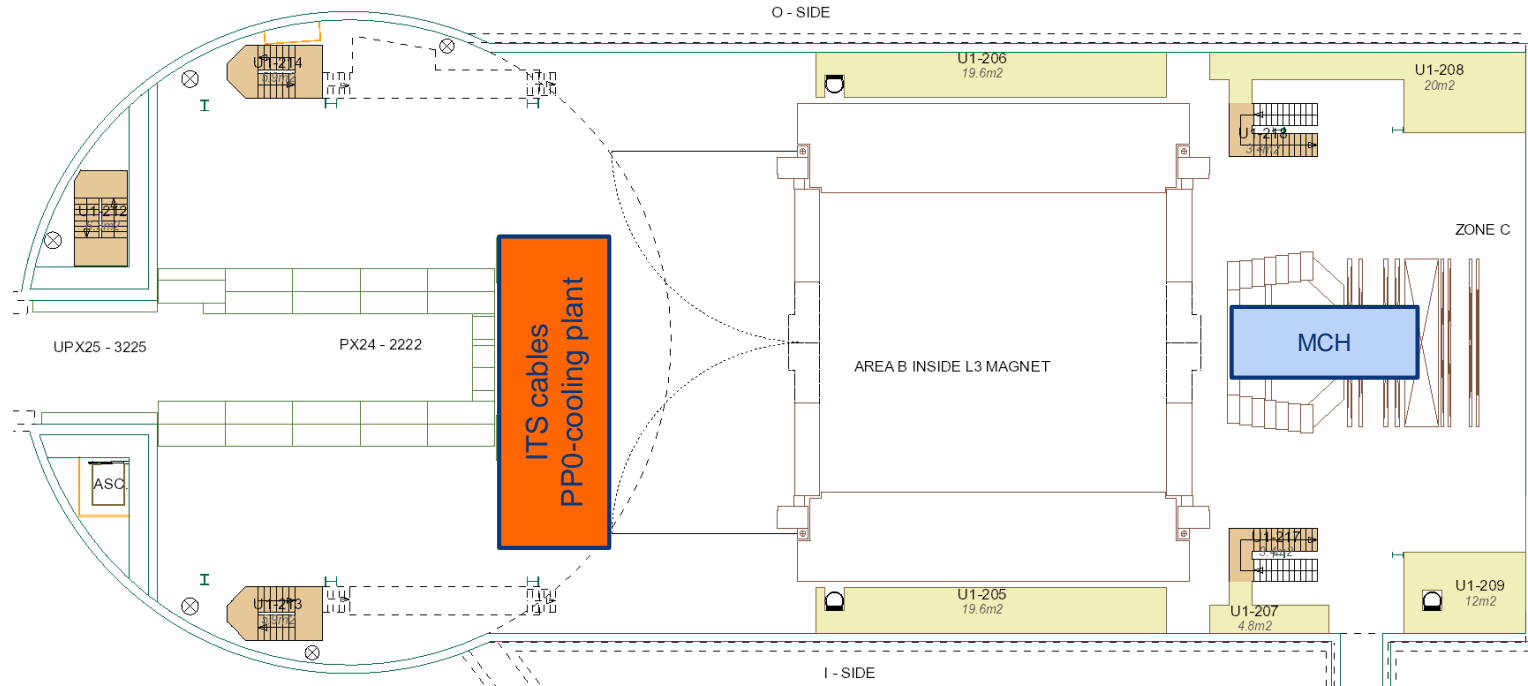
UX25 activities w29 – Mon 13 Jul 2020

Replacement PM25 lift (until 7 August) → LHC access via ALICE (PX24)

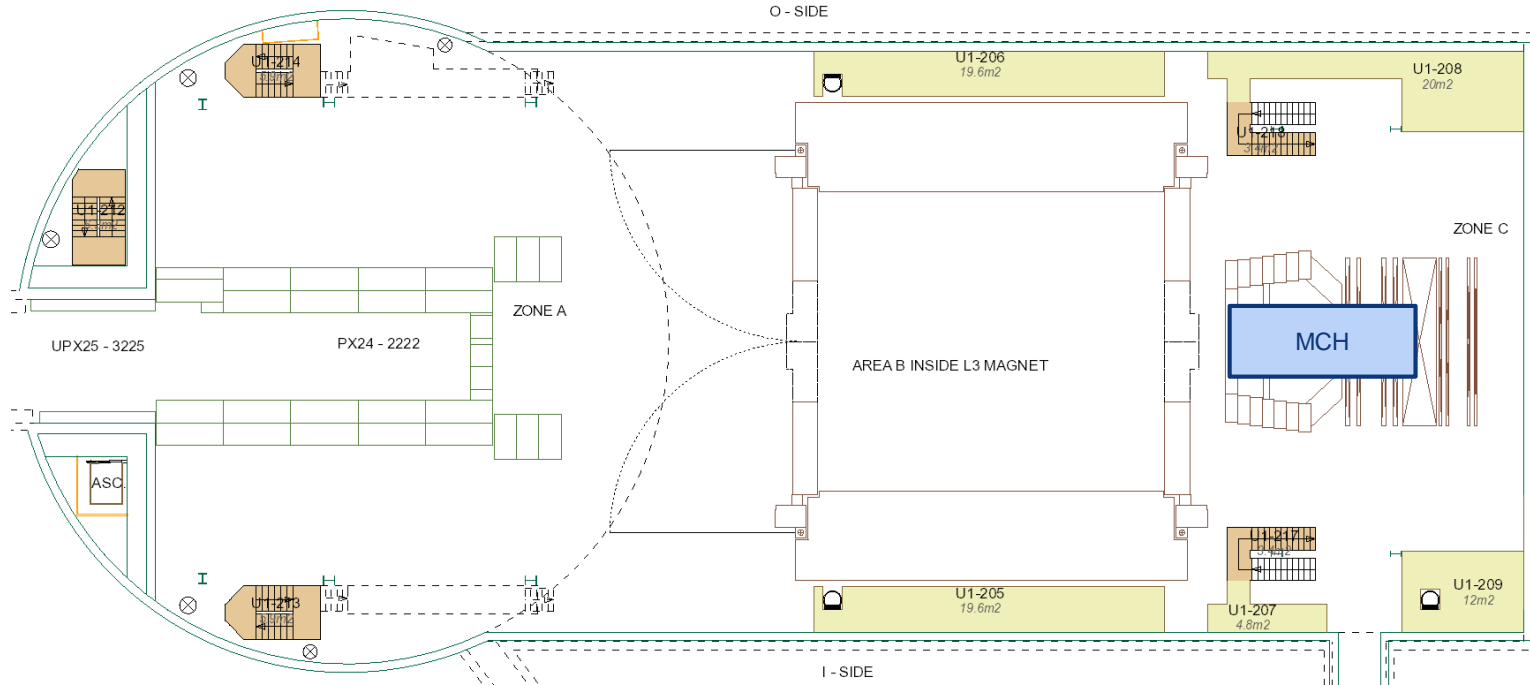


UX25 activities w29 – Tue 14 Jul 2020

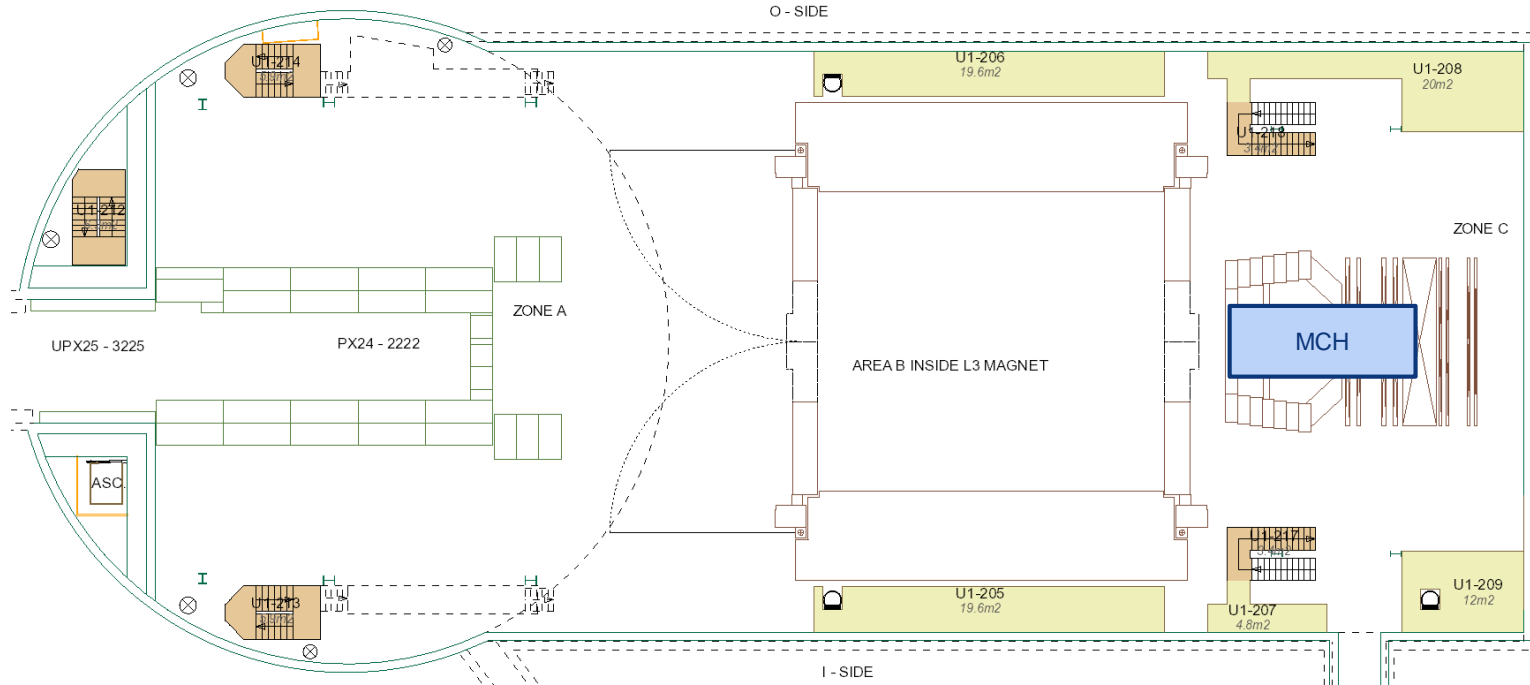
Cleaning cavern (Topnet): 13:00 to 15:00



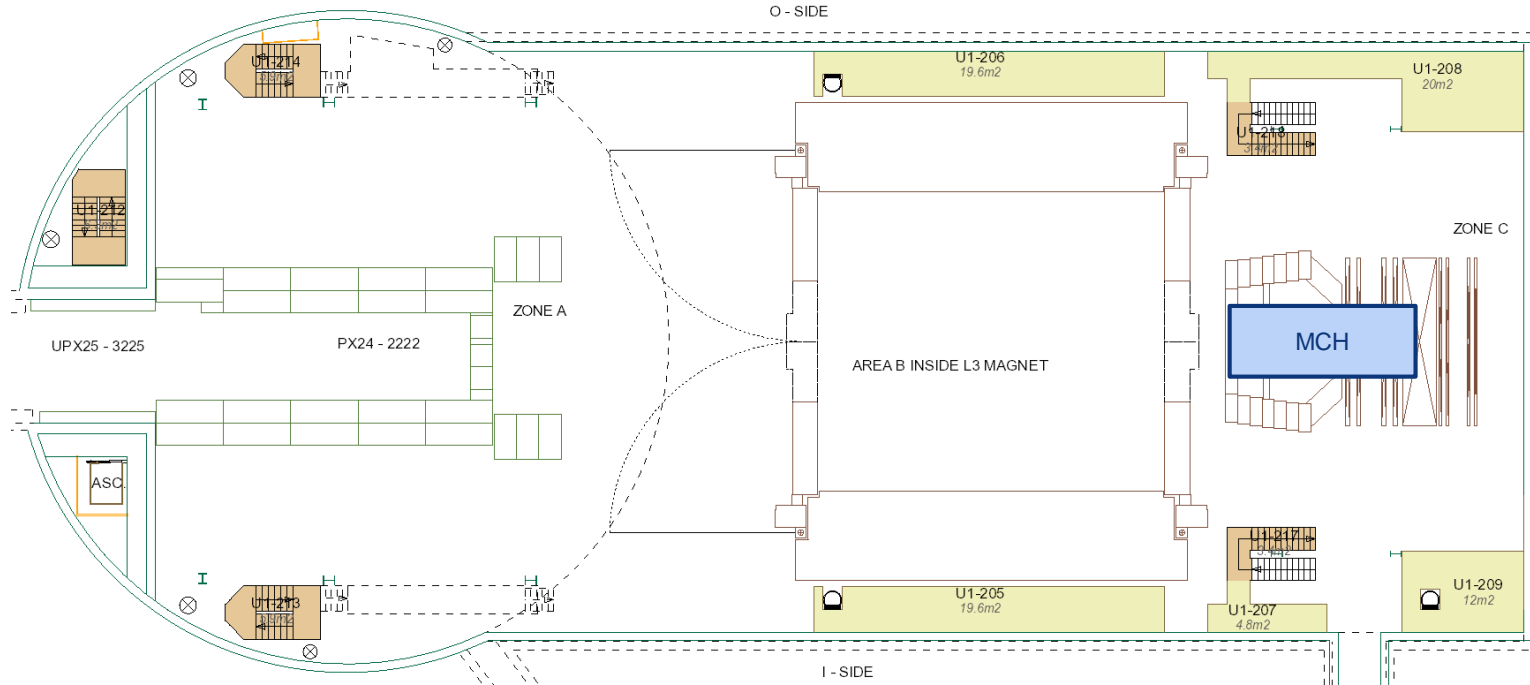
UX25 activities w29 – Wed 15 Jul 2020



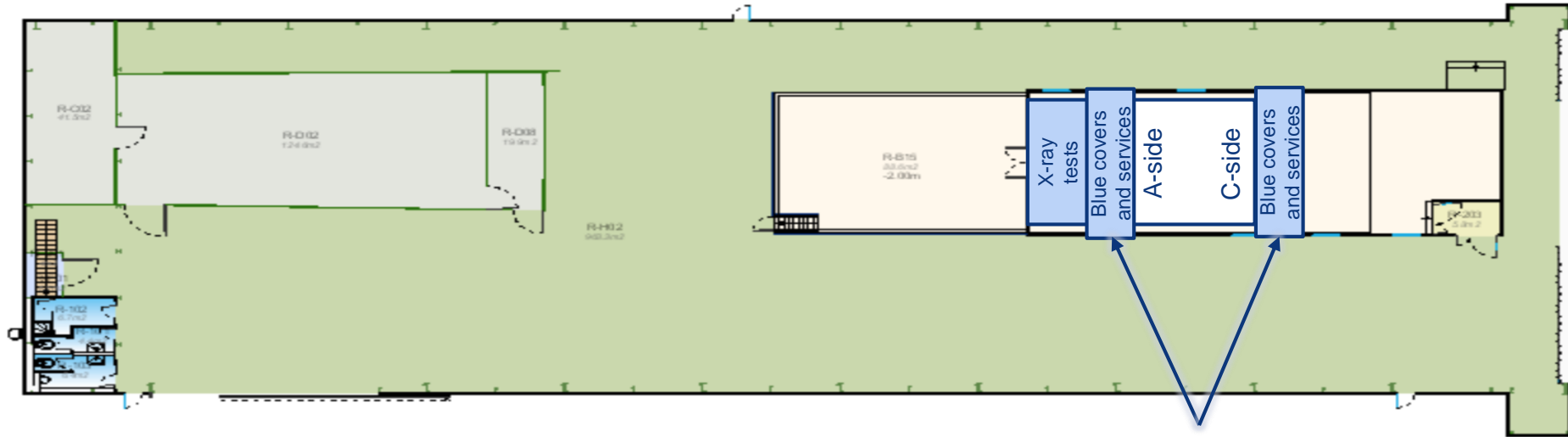
UX25 activities w29 – Thu 16 Jul 2020



UX25 activities w29 – Fri 17 Jul 2020

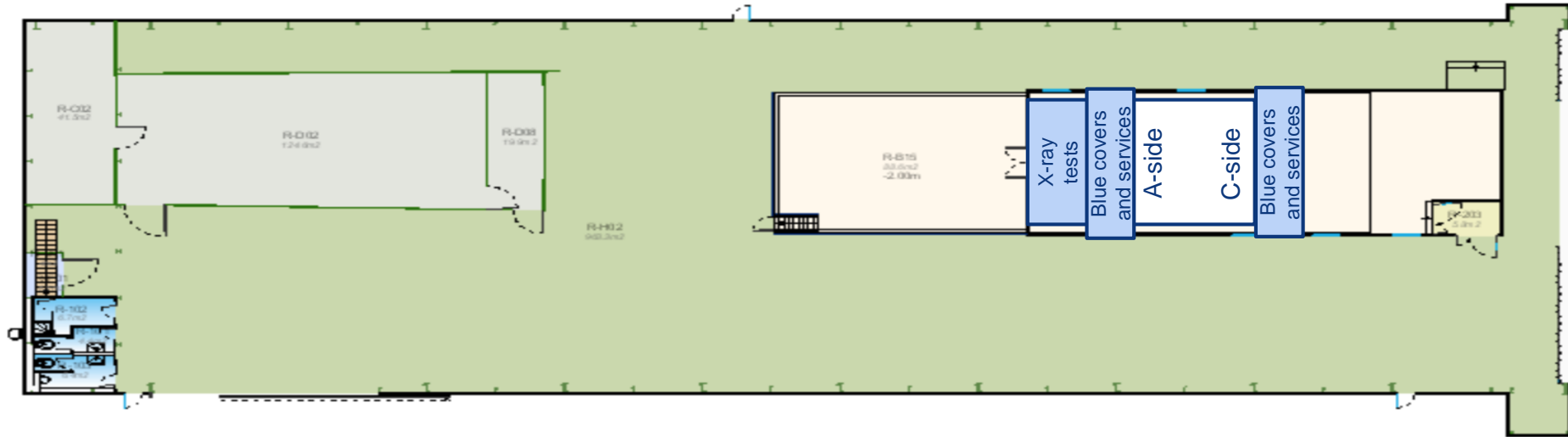


SXL2 activities w29 – Mon 13 Jul 2020

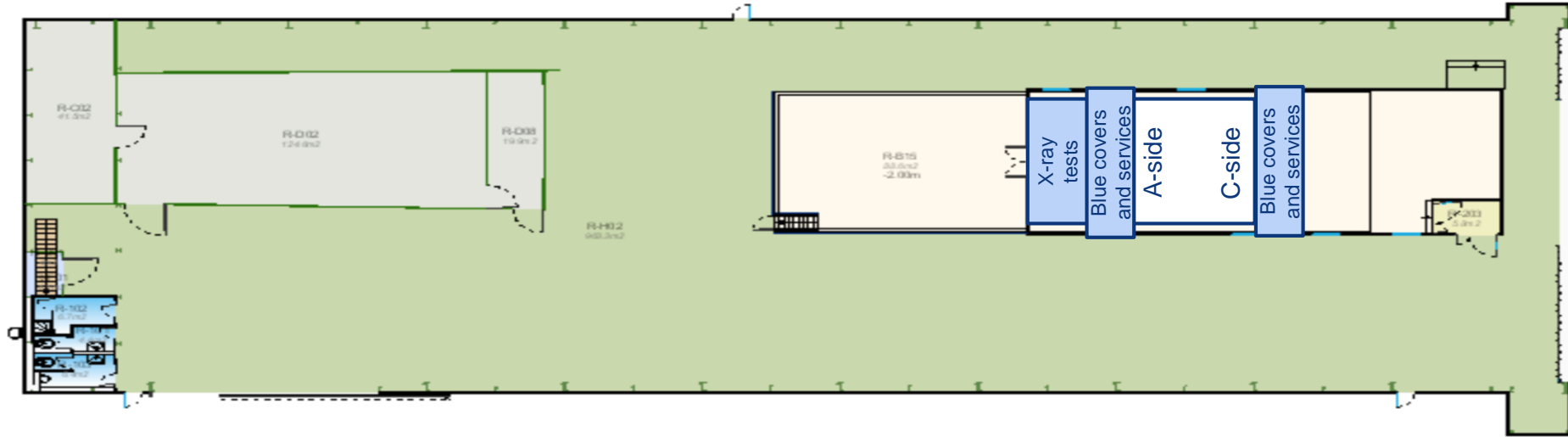


Modify and mount blue covers. Secure fibers and cables

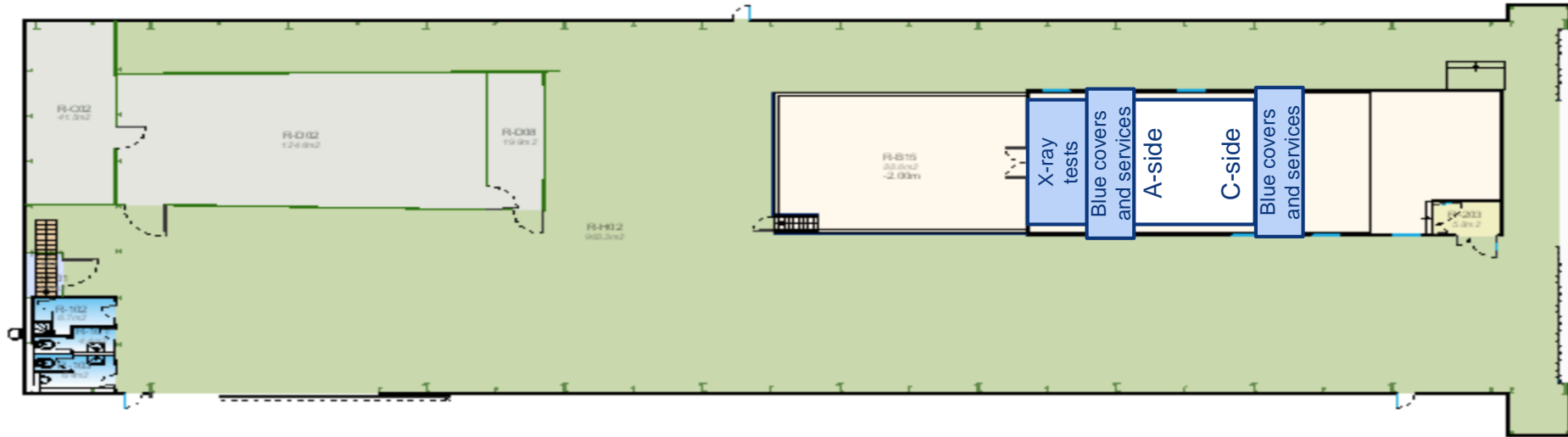
SXL2 activities w29 – Tue 14 Jul 2020



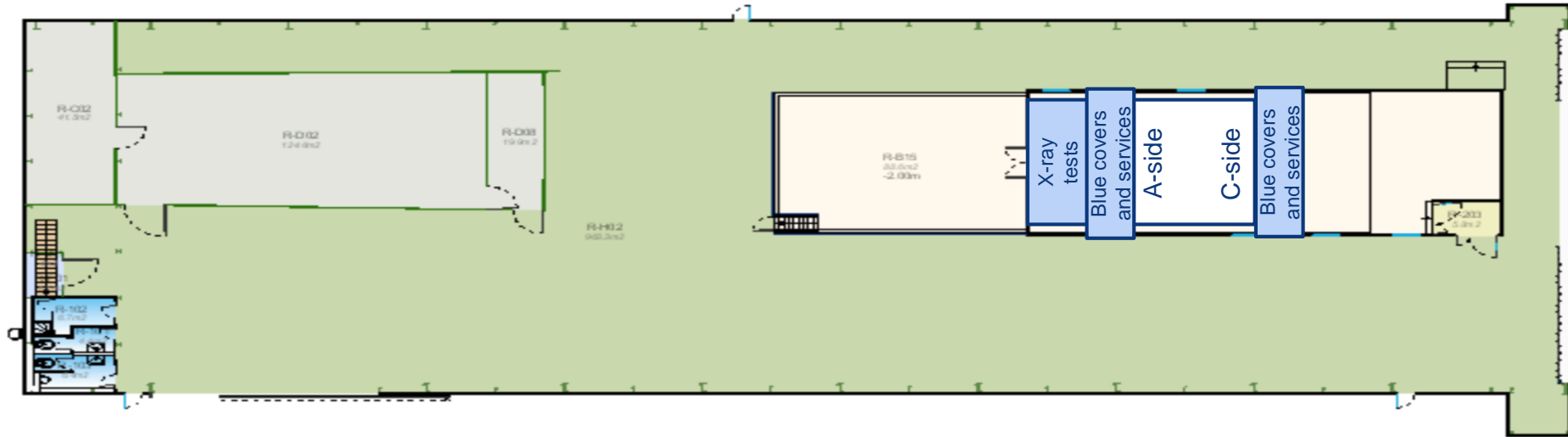
SXL2 activities w29 – Wed 15 Jul 2020



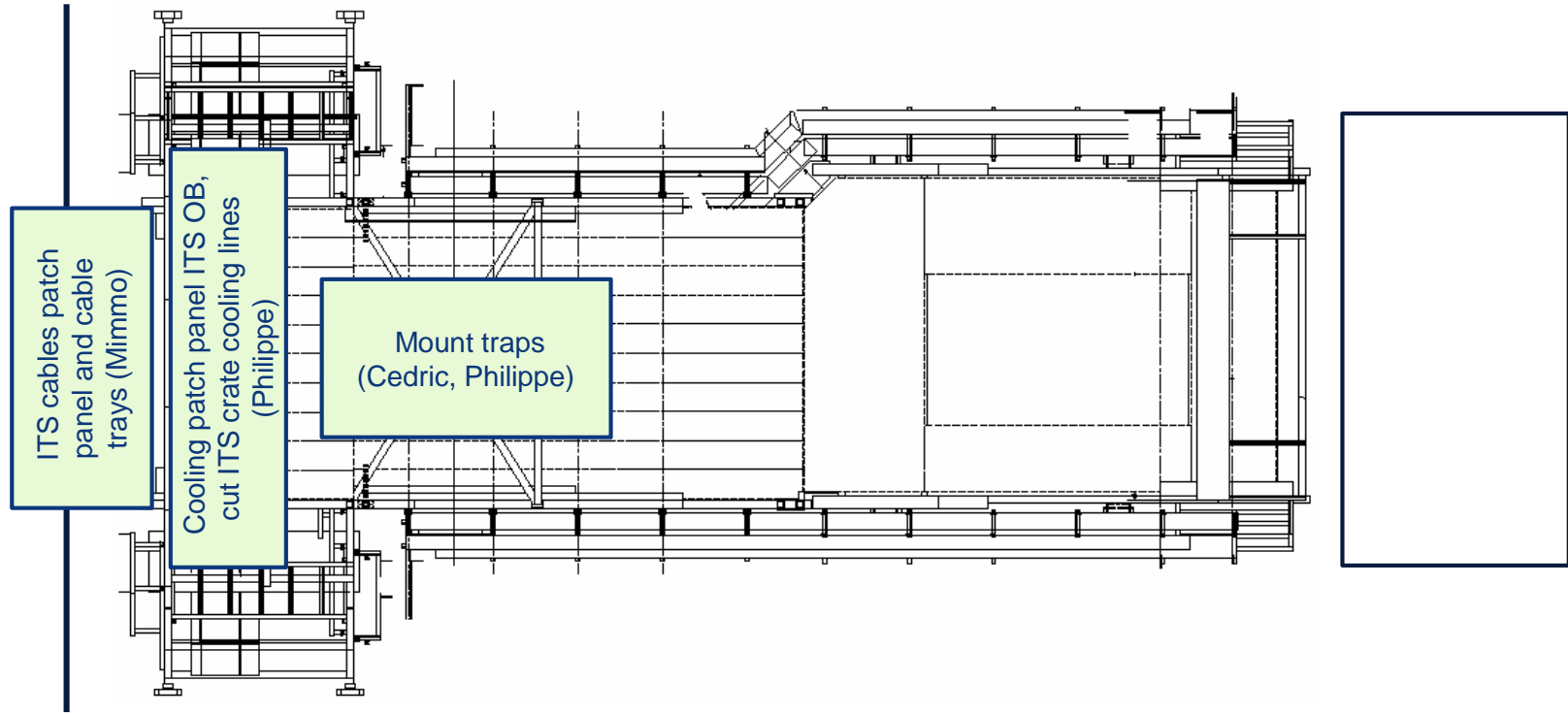
SXL2 activities w29 – Thu 16 Jul 2020



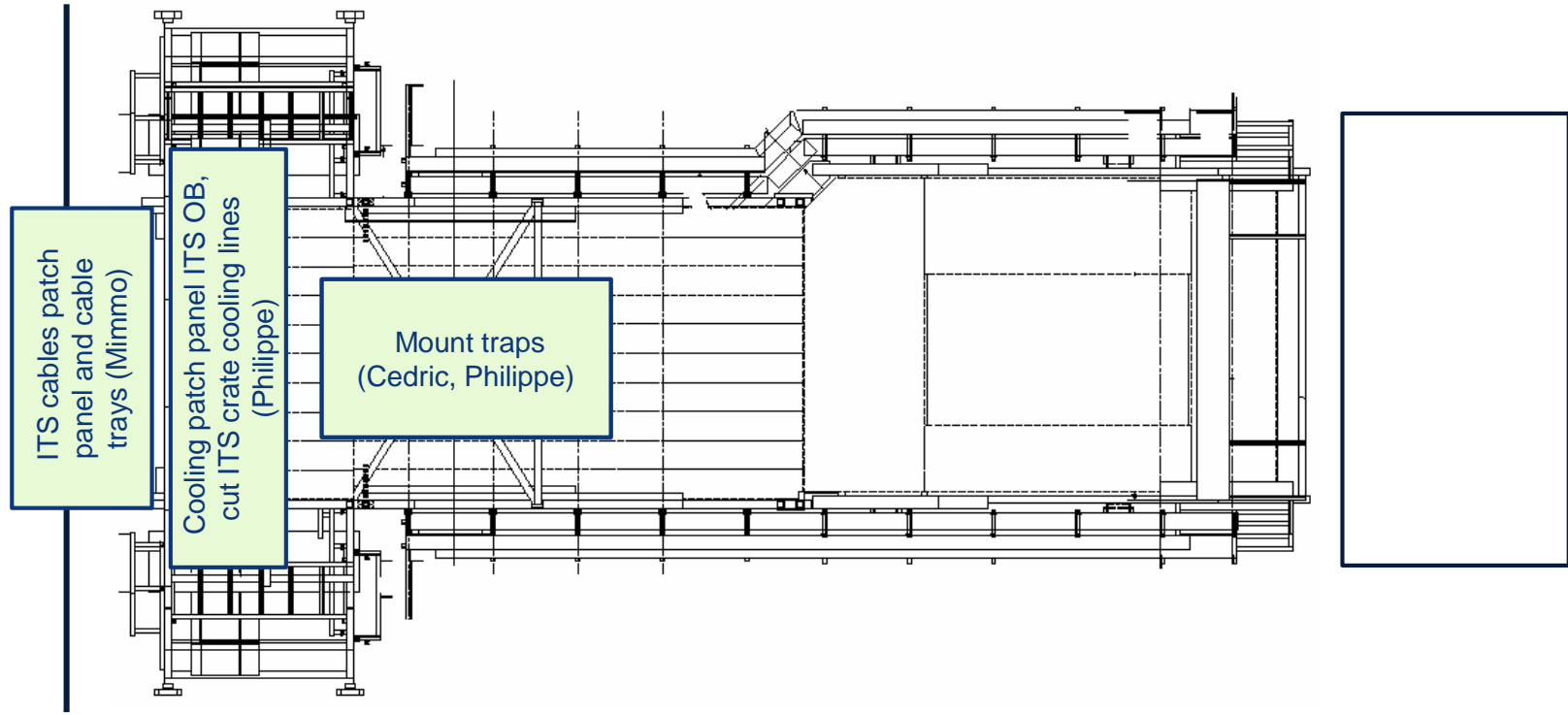
SXL2 activities w29 – Fri 17 Jul 2020



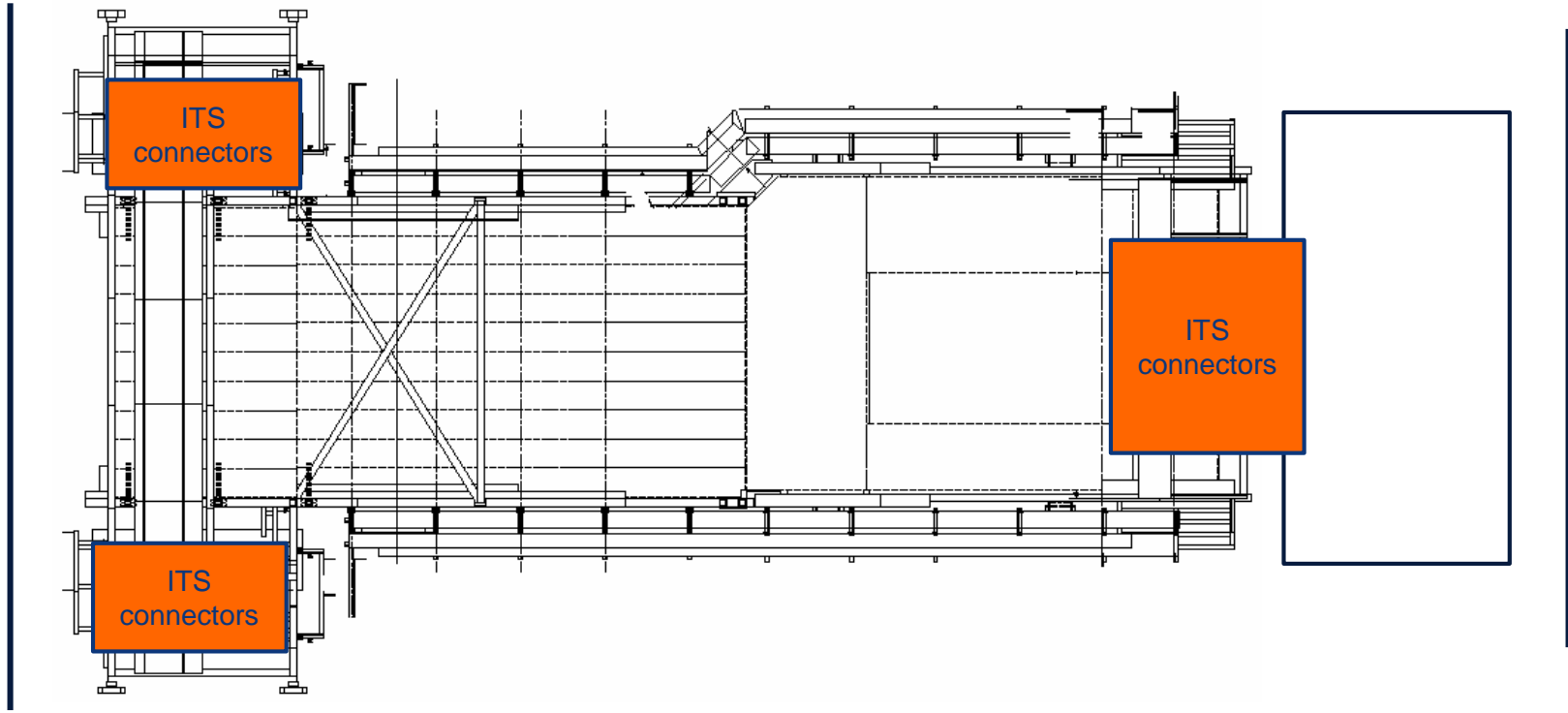
Miniframe activities w29 – Mon 13 Jul 2020



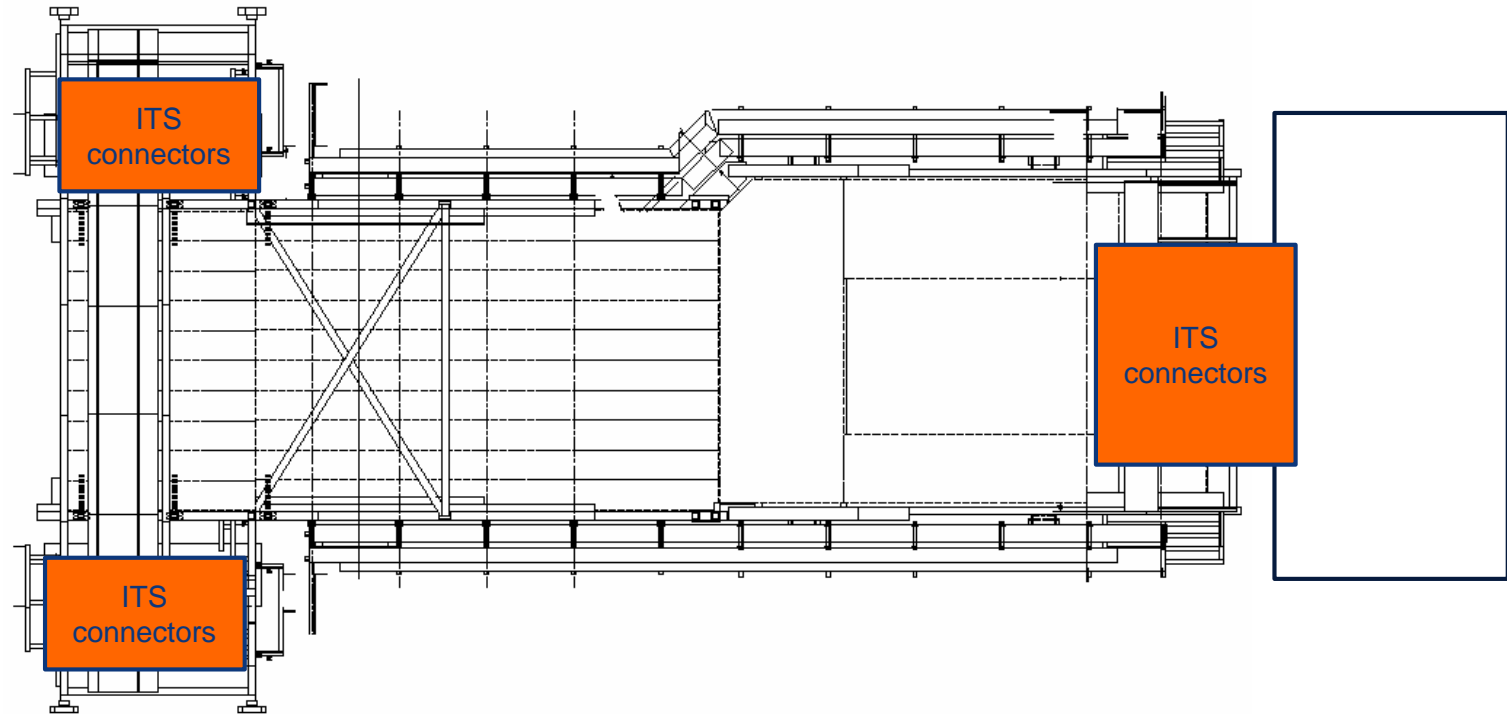
Miniframe activities w29 – Tue 14 Jul 2020



Miniframe activities w29 – Wed 15 Jul 2020



Miniframe activities w29 – Thu 16 Jul 2020



Miniframe activities w29 – Fri 17 Jul 2020

