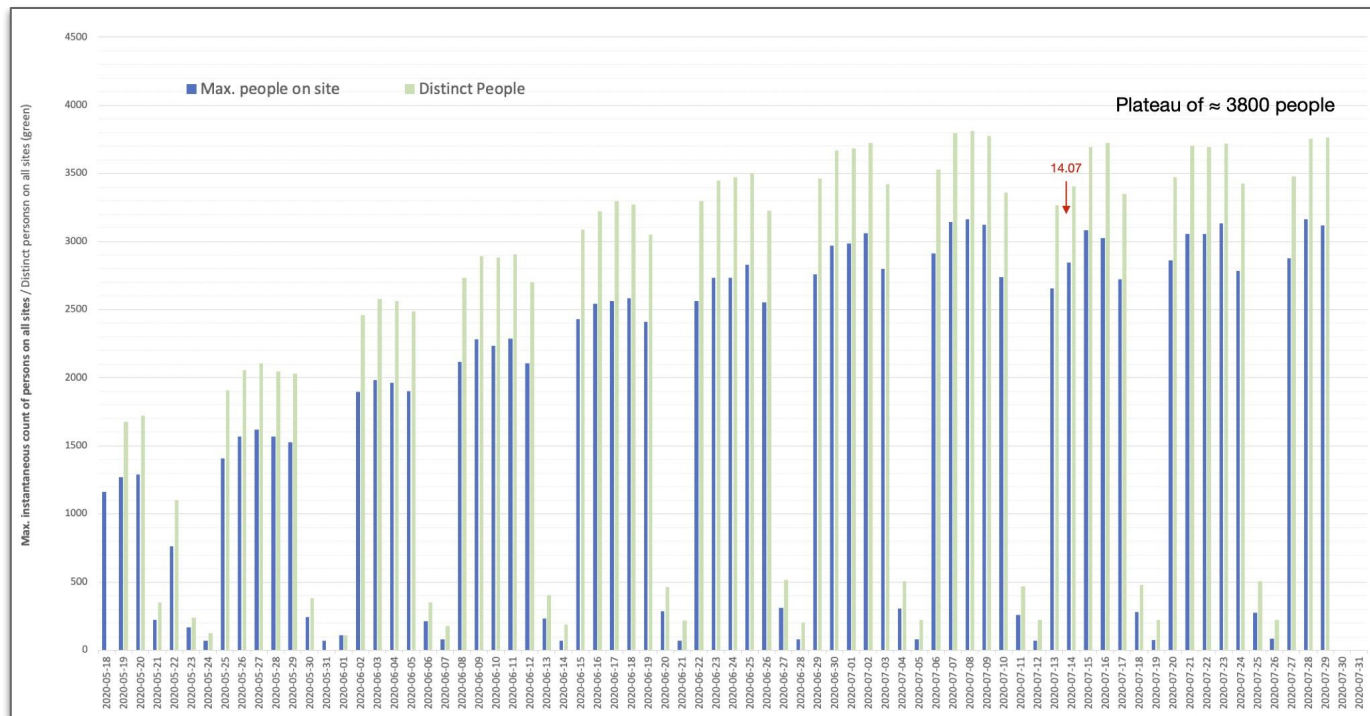


SFT News

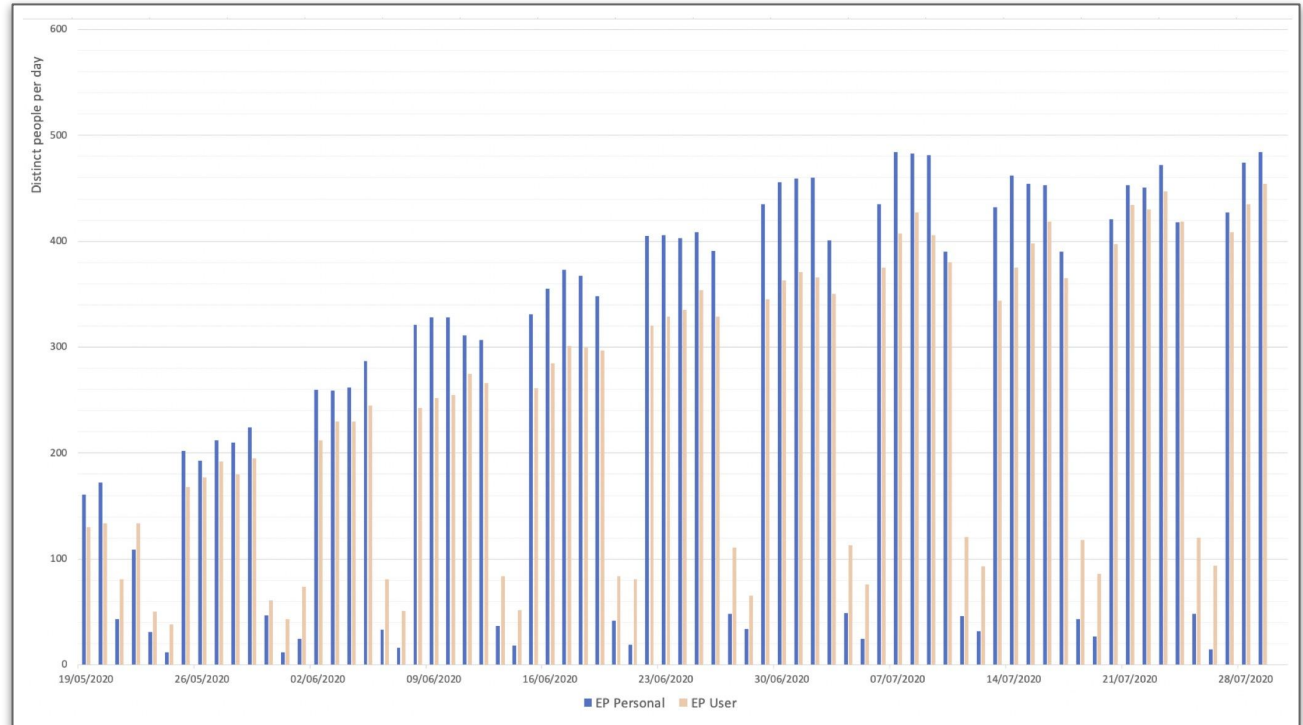
3 August 2020

EP Ramp-up



- Effect of holiday seasons clearly visible
- Reached plateau of ~3200 simultaneous (~3800 distinct) people

EP Ramp-up



- EP USERS (i.e. not personnel) are about 50%

EP DH message

- Critical period: everybody should feel concerned and must respect the rules in order to prevent the spread of the virus at CERN
- Following rules proves to be effective
 - But still too many people not strictly following them
 - 3 suspected / confirmed cases in EP last week
 - For car sharing, guards have been instructed to deny entrance to shared cars if any of the passengers does not wear a mask
 - This applies with no exception also to people living in the same place
- People feeling sick should not come/stay at CERN
 - In case of Covid symptoms (or unsure) go home and call the medical service

Teleworking

- *Special teleworking* due to the Covid crisis is extended until end of August
- Current plan: from September 1st, teleworking will be an exceptional measure
 - Possibly justified by space management reasons
 - Should not exceed 50% of the time.
- The situation will be reviewed mid August
- Reminder:
 - In absence of other impediments (vacations, vulnerabilities, quarantine,...), **EP members of personnel are encouraged to be on site at least 1-2 days per week** to get familiar with the situation and spot / report problems or issues.

Office space

- Office space Working Group outcome
 - Departments other-than-EP
 - Situation not bad, only about 80 work-places missing after applying occupation rules
 - EP
 - Situation difficult due to the uncertainty of USERS return
 - Experiments should find pragmatic local agreement for usage of offices temporary unoccupied
- Reminder:
 - In a ventilated $\geq 11 \text{ m}^2$ office people not facing each other can remove their mask

Private travel

- For private travel to High-Risk Countries (HRC), **quarantine-on-return** applies
 - CERN HRC list = [Swiss](#) OR [French](#) HRC lists
- Persons involved shall inform their supervisor before travelling and discuss an agreement on telework if possible, on special leave or annual leave
- For MPAs
 - Rule implies no access to CERN for 14 days upon return from HRC
- For Users
 - CERN-IPT prepares a list of hotels accepting people for quarantine
 - Positive tested cases will be hosted in Switzerland and in France in dedicated hotels defined by the respective authorities
 - Person returns/comes from a HRC, the test is not required by the Host States
 - But quarantine applies

AoB

- Access lists
 - Include 7655 names on them
 - 183 without Covid-19 training
 - Will remain in use mostly to control > 65 access
- Updated definition of close contacts:
 - Less than 2m, more than 15 min, AND no mask, **OR** persons not respecting instructions
- Certificate defined for access to the CERN site
 - May be issued upon request of the associated members of personnel for the purpose of certification of access rights (originally requested by INFN)

Events

- Snowmass 2021 [Computational Frontier](https://indico.fnal.gov/event/43829/) kick-off meeting Aug 10-11
<https://indico.fnal.gov/event/43829/>