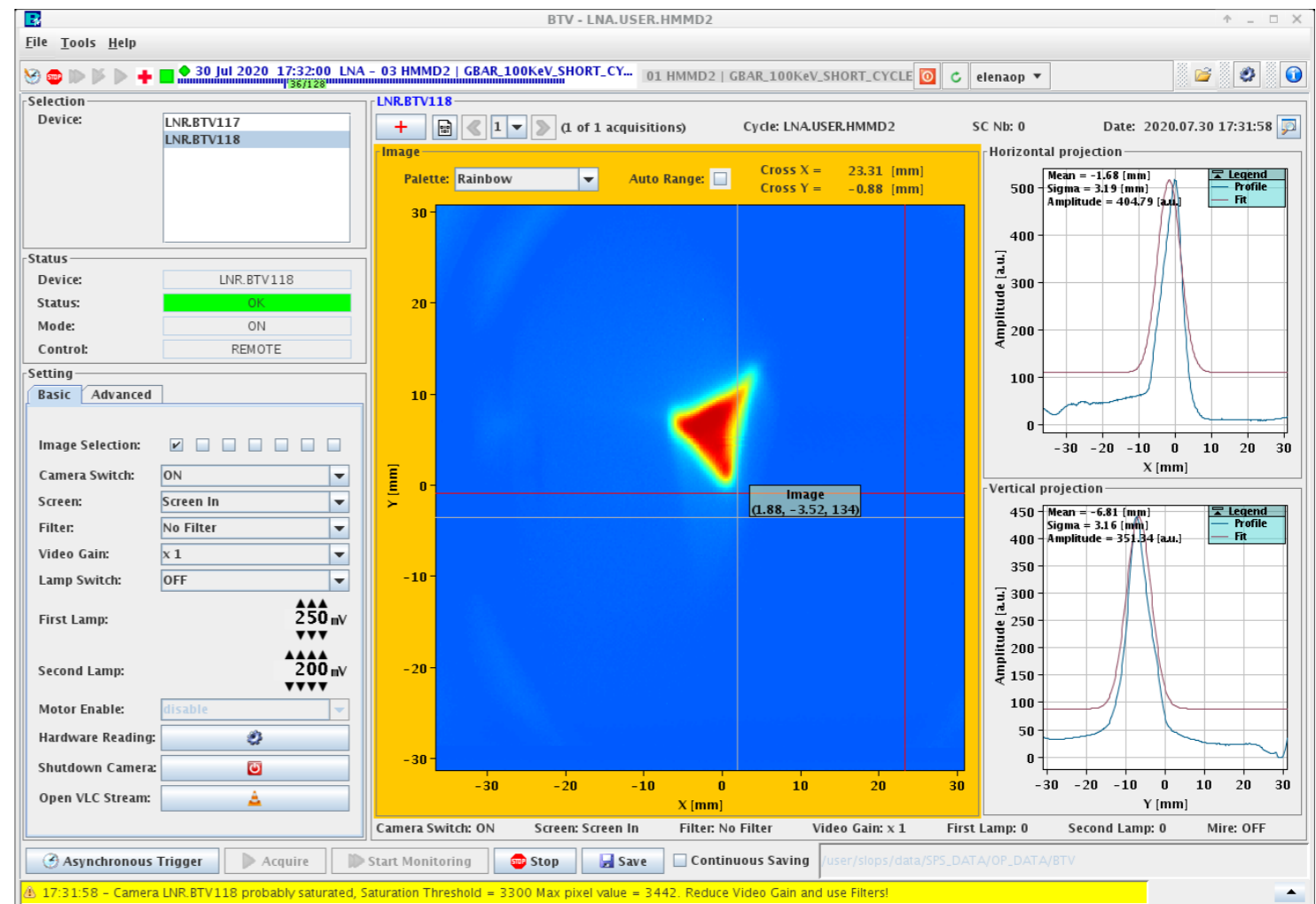


ELENA Ring commissioning status

- Beam was sent on first BTV on Thursday 30/07
 - Ion source pulsed at 100 kV
 - LNS-LNI with same settings as end of 2019
- We were(almost!) ready for ring commissioning



- Production problem on ELENA HV connectors for electrostatic elements in Transfer lines:
 - Impacting the beam commissioning because of the lock out of the LNS and LNI electrostatic elements
 - Corrective actions on-going, should be completed by the end this week
 - Reconnection to ZQ and ZD when expert back from holidays
 - => OK to unlock 1 rack (including LNS and LNI electrostatic elements) after completion of connectors repair to allow Hminus beam into ELENA
 - Impact on the planning of the TL commissioning still to be followed up due to holidays period (at least 2 weeks)
- But problem on LLRF identified last week during HW tests (common problem with Booster), expert needed to fix it on vacation => no LLRF for the time being

- Going-on with HW tests: profile monitors, B-train, power converters, kicker, settings controls...
- New isolation transformer arrived at CERN,
 - Anticipated installation in the shadow of the LNS lock-out
 - Tests on-going to operate in DC mode at 100 kV
- Few (mostly software) issues identified during HW tests: almost all fixed except publication problem from FGC_93 still under investigation

