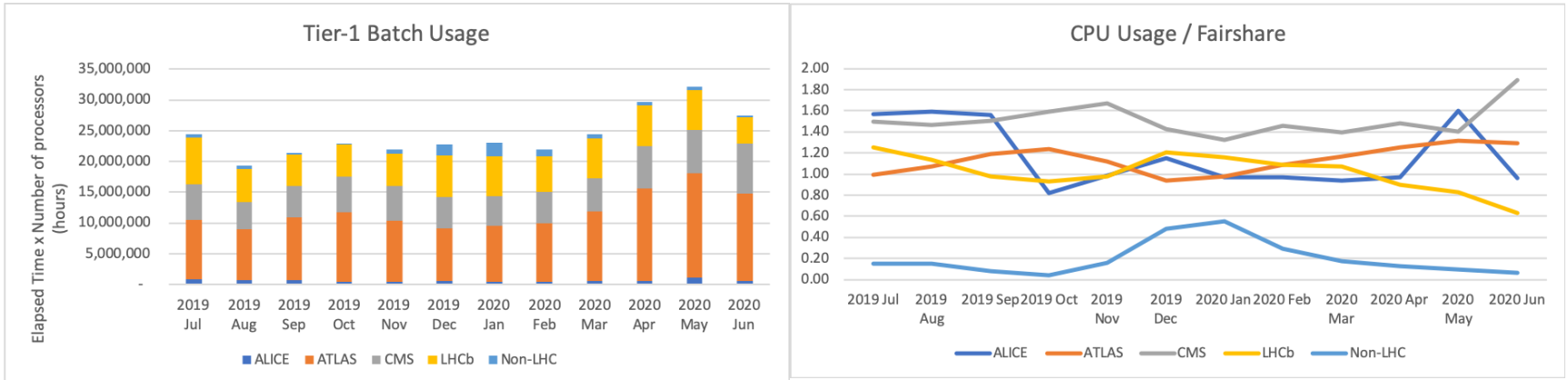


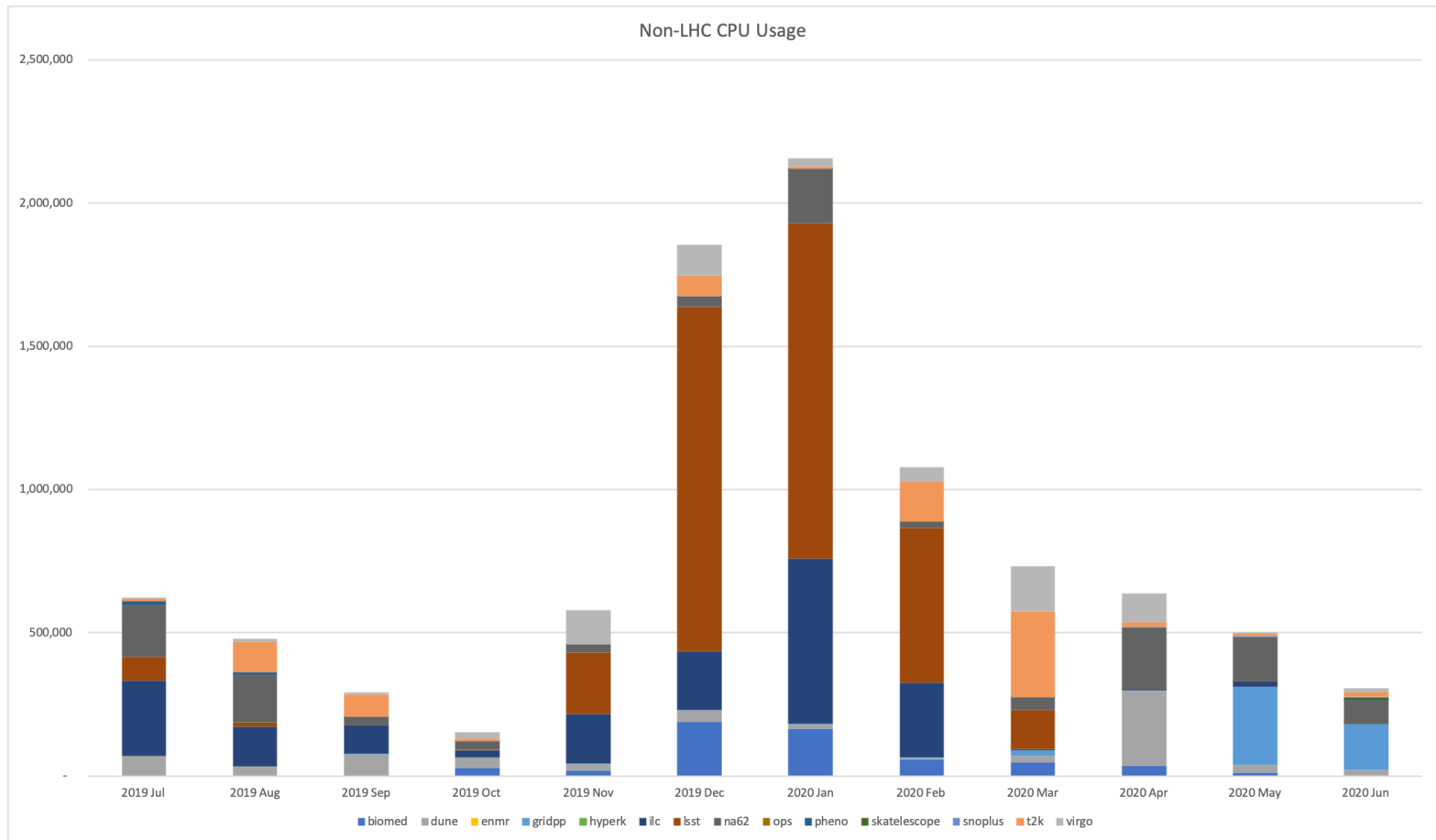
# Experiment Resource Usage

# CPU usage

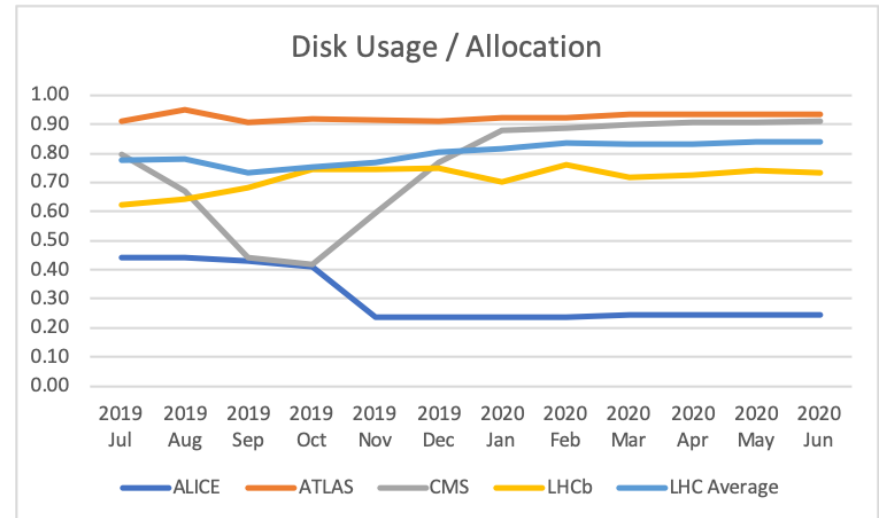
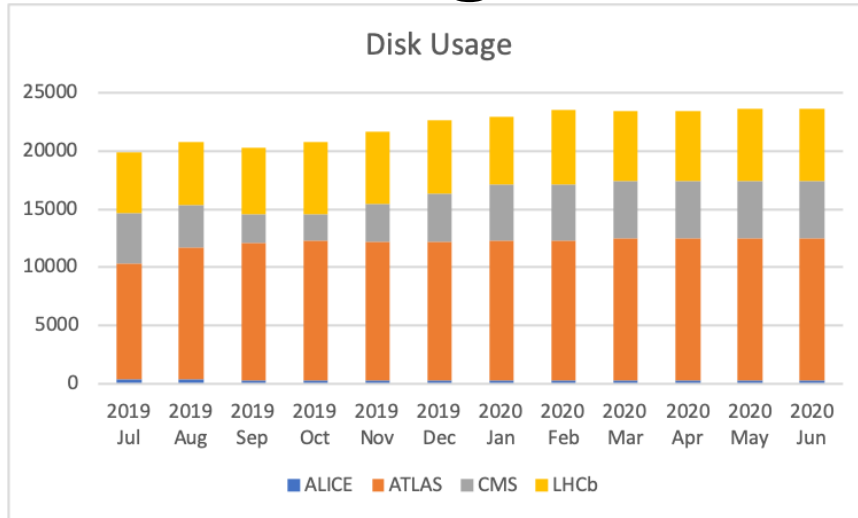


	2019 Jul	2019 Aug	2019 Sep	2019 Oct	2019 Nov	2019 Dec	2020 Jan	2020 Feb	2020 Mar	2020 Apr	2020 May	2020 Jun
ALICE	849,747	678,849	740,635	417,637	476,932	577,619	495,849	470,636	507,078	638,351	1,132,630	585,478
ATLAS	9,698,040	8,278,950	10,194,617	11,389,927	9,820,257	8,511,746	9,045,135	9,504,706	11,405,682	14,925,560	16,888,304	14,149,728
CMS	5,762,546	4,439,334	5,063,490	5,745,714	5,745,714	5,098,194	4,801,756	5,010,961	5,340,933	6,925,978	7,057,414	8,138,658
LHCb	7,548,786	5,383,885	5,168,849	5,260,817	5,260,817	6,733,941	6,561,059	5,858,582	6,453,564	6,598,097	6,529,994	4,262,488
Non-LHC	621,407	479,541	290,891	152,487	579,032	1,854,256	2,155,979	1,078,407	731,979	637,311	499,846	304,850
Total	24,480,527	19,260,558	21,458,483	22,966,582	21,882,752	22,775,755	23,059,778	21,923,292	24,439,236	29,725,297	32,108,188	27,441,202

# Non-LHC CPU Usage



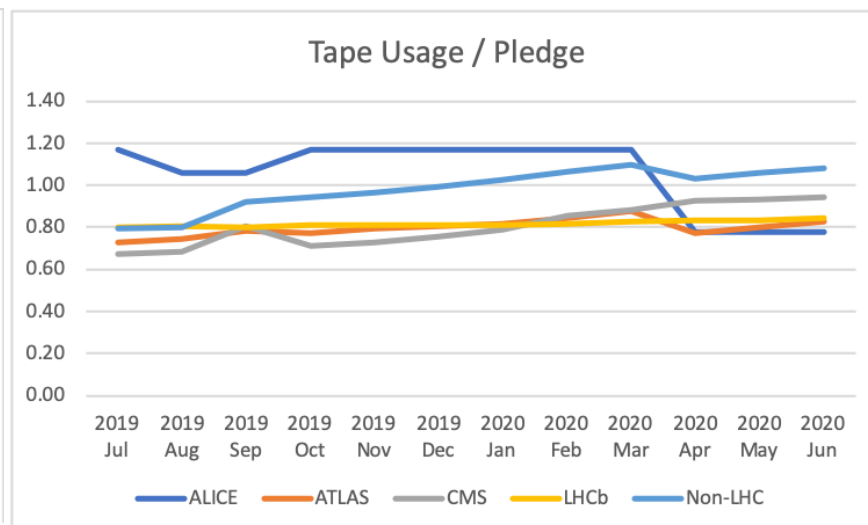
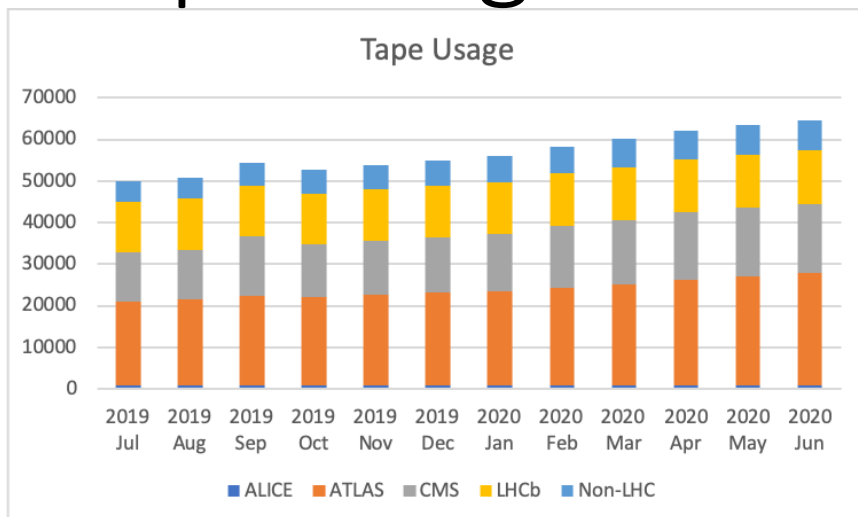
# Disk usage



Usage	2019 Jul	2019 Aug	2019 Sep	2019 Oct	2019 Nov	2019 Dec	2020 Jan	2020 Feb	2020 Mar	2020 Apr	2020 May	2020 Jun
ALICE	336	336	327	311	314	314	314	314	322	322	322	322
ATLAS	10000	11390	11800	11940	11900	11877	12,000	12,000	12,170	12,150	12,161	12,170
CMS	4327	3641	2400	2270	3229	4178	4,774	4,814	4,890	4,930	4,929	4,960
LHCb	5213	5375	5700	6250	6237	6281	5,859	6,351	6,020	6,060	6,200	6,140
Total	19876	20742	20227	20771	21680	22650	22947	23479	23402	23462	23612	23592

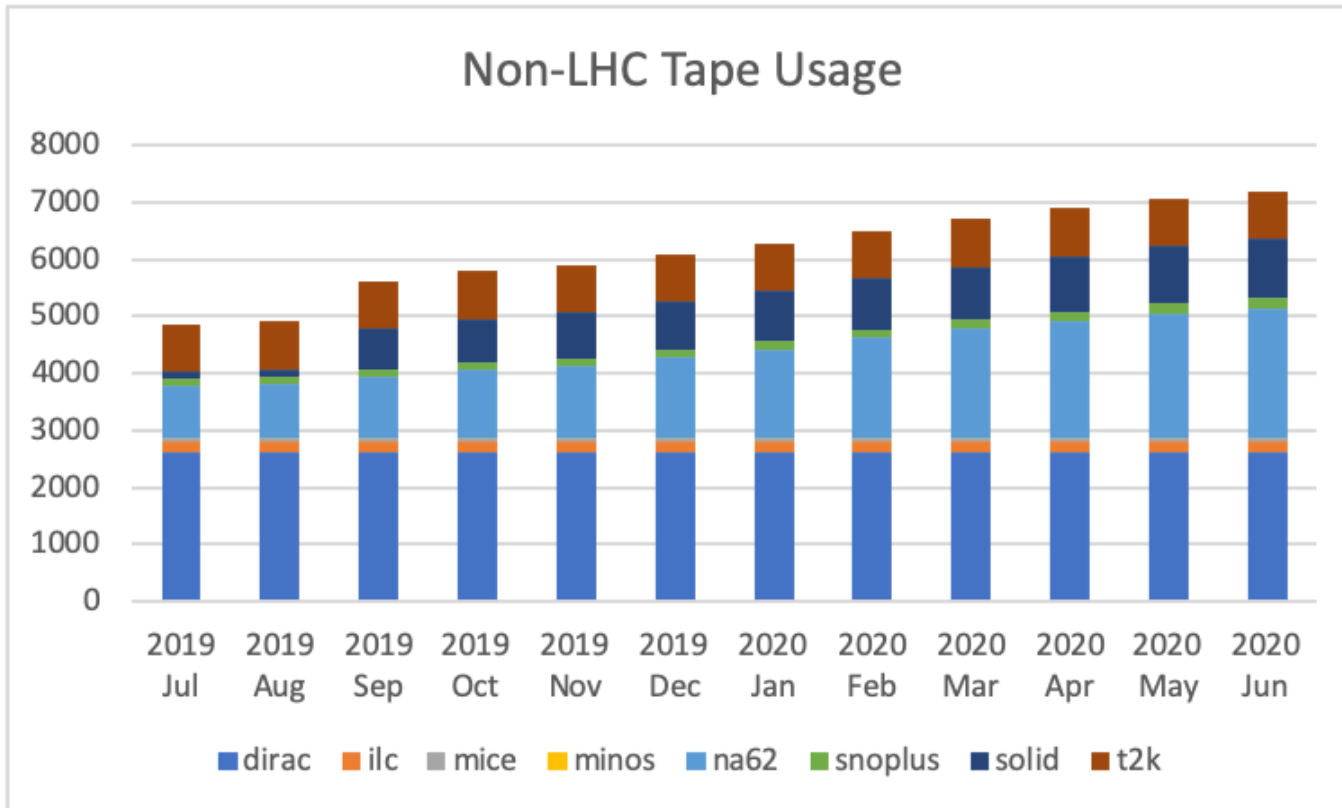
- ALICE usage stayed low as they couldn't effectively write to Echo due to bug in xrdcp -f.
- Dune only non-LHC VO using storage so far (929TB).

# Tape usage



Usage	2019 Jul	2019 Aug	2019 Sep	2019 Oct	2019 Nov	2019 Dec	2020 Jan	2020 Feb	2020 Mar	2020 Apr	2020 May	2020 Jun
ALICE	882	798	798	882	882	882	882	882	882	882	882	882
ATLAS	20,046	20,634	21,638	21,361	21,899	22,257	22,550	23,347	24,235	25,315	26,194	27,027
CMS	11,860	12,008	14,181	12,477	12,779	13,258	13,911	15,066	15,537	16,335	16,435	16,598
LHCb	12,226	12,310	12,232	12,340	12,365	12,383	12,391	12,499	12,669	12,740	12,756	12,861
Non-LHC	4,866	4,911	5,629	5,791	5,908	6,088	6,280	6,509	6,714	6,893	7,070	7,202
<b>Total</b>	<b>49880</b>	<b>50661</b>	<b>54478</b>	<b>52851</b>	<b>53833</b>	<b>54868</b>	<b>56014</b>	<b>58303</b>	<b>60037</b>	<b>62165</b>	<b>63337</b>	<b>64570</b>

# Non-LHC Tape usage



Usage	2019 Jul	2019 Aug	2019 Sep	2019 Oct	2019 Nov	2019 Dec	2020 Jan	2020 Feb	2020 Mar	2020 Apr	2020 May	2020 Jun
dirac	2605	2605	2605	2605	2605	2605	2605	2605	2605	2605	2605	2605
ilc	216	216	216	216	216	216	216	216	216	216	216	216
mice	44	44	44	44	44	44	44	44	44	44	44	44
minos	12	12	12	12	12	12	12	12	12	12	12	12
na62	910	949	1061	1178	1255	1402	1548	1748	1915	2043	2170	2261
snoplus	124	127	130	132	135	138	141	144	151	166	178	182
solid	124	127	730	773	809	836	879	904	935	971	1009	1046
t2k	831	831	831	831	832	835	835	836	836	836	836	836

# Tape packing efficiency

Experiment	Space Used	Tapes used	Ratio
atlasTape	24816	25778	0.963
cmsTape	15923	17987	0.885
lhcbRawRdst	12709	12661	1.004
diracTape	2605	2362	1.103
na62Tape	1915	1872	1.023
solidTape	935	601	1.556
aliceTape	882	798	1.105
t2kTape	836	944	0.886
ilcTape	216	326	0.663
snoplusTape	151	163	0.926
miceTape	44	146	0.301
minosTape	12	17	0.706
Total	61044	63655	0.959