



MICE CM27

Schedule & risks

Andy Nichols, STFC 10th July, 2010



Risks

- *MICE is in a rather vulnerable place just now.....*
- *Our schedule is critically dependent on just a few big dates*
- *Eg Steps II, III, on the spectrometer solenoid*
- *UK Oversight Committee (June 2010): believe our schedule lacks credibility*
- *The MICE Project Board must not be given the same opportunity to say that in September*
- *But discussions on the recovery plan look encouraging*
- *Another big risk to us is manpower availability*
- *Cryogenic, engineering, RF software, DAQ, etc*
- *Each institute is under pressure to some extent*
- *Eg, recruitment freeze at STFC.....*

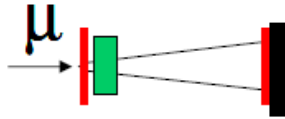
How I'd like the S/sol plan to go

- *Presently both magnets are dismantled*
- *Technical appraisal report being written*
- *Current lead failure being diagnosed*
- *September 2010 – current lead diagnosis complete*
- *December 2010 – recovery plan written and agreed by MICE*
- *It should include:*
 - *A resource-loaded project plan*
 - *Risks specifically identified*
 - *Float specifically identified*
- *Then we can decide how long it takes and make a believable top-level schedule*

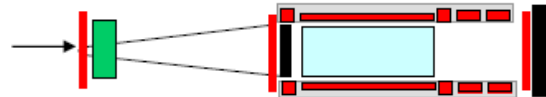
MICE Schedule as of March 2010

Run date:

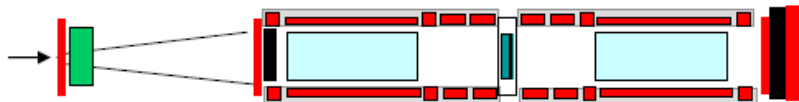
(running now)
-> Aug2010



STEP I

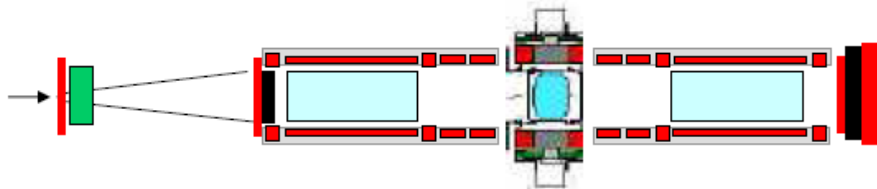


STEP II



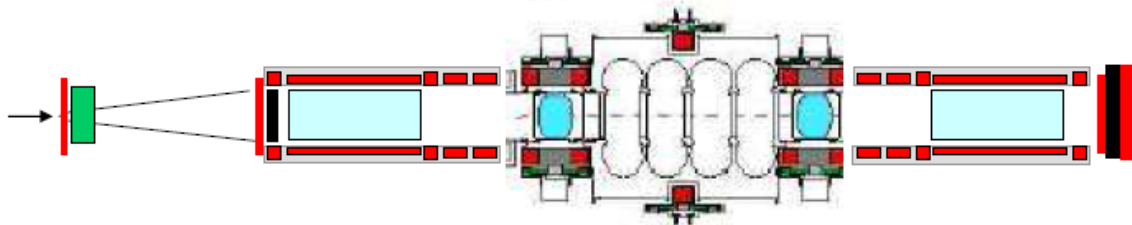
STEP III/III.1

Entirely dependent on
s/sol recovery plan
Decision point Dec 2010



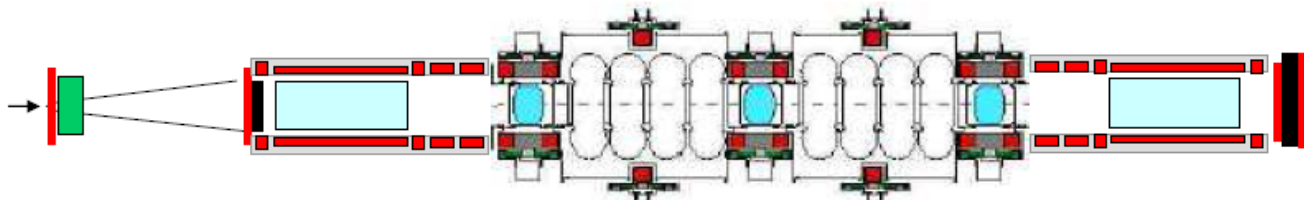
STEP IV

Q2 2012



STEP V

2013 3



STEP VI

≥2013



Other schedule issues

- *UK 'reconstructed' activity schedule for FY 10/11 is complete except for:*
- *Electrical work, but almost complete now financial priorities understood*
- *Need to know if offline target programme still needed and if so schedule it*
- *Operation is routine now and some tasks are 'M&O'*
- *FC no1 ready Jan 2011 – but needs watching very carefully, confidence level not high*
- *Diffuser redesign likely, but not critical path for some time*
- *EMR making good progress, ditto, but some minor interface problems with R5.2 need clearing up*