



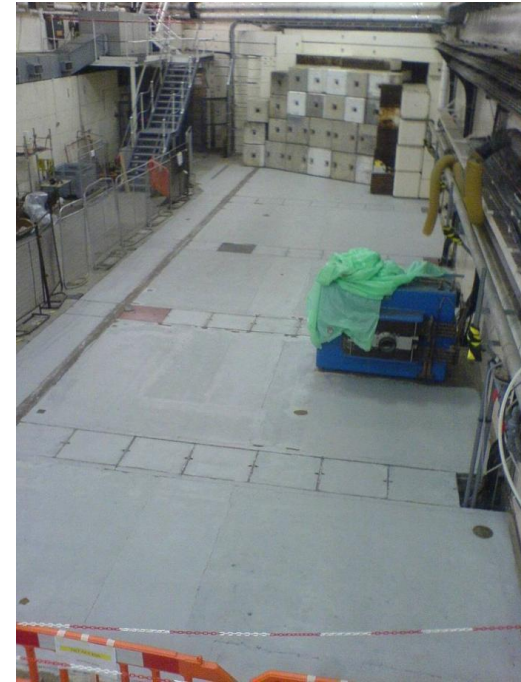
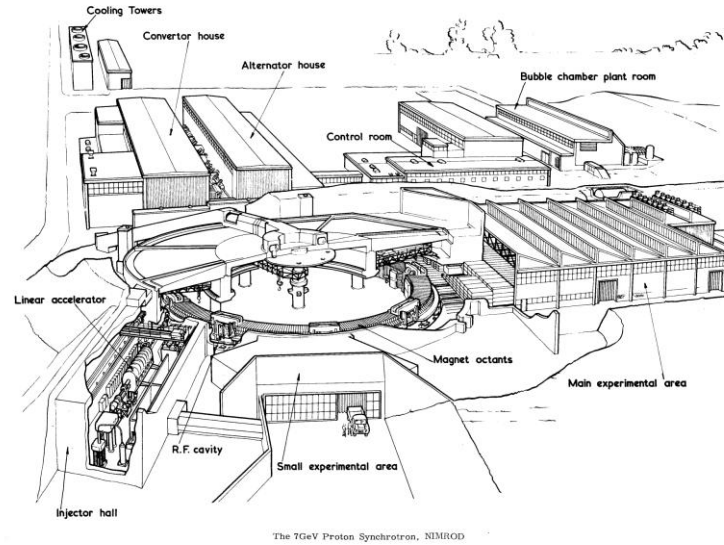
MICE CM27

PM Report

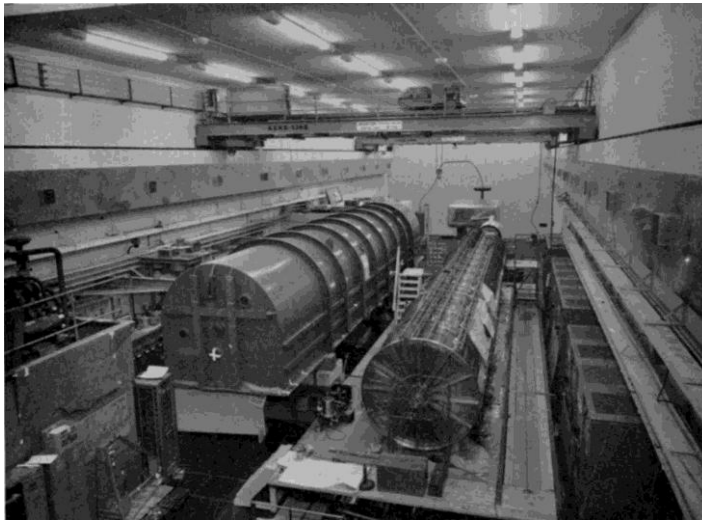
- *Re-defining the UK project this FY*
- *Schedule things*
- *Apologies and accommodation*

Andy Nichols, STFC 7th July, 2010



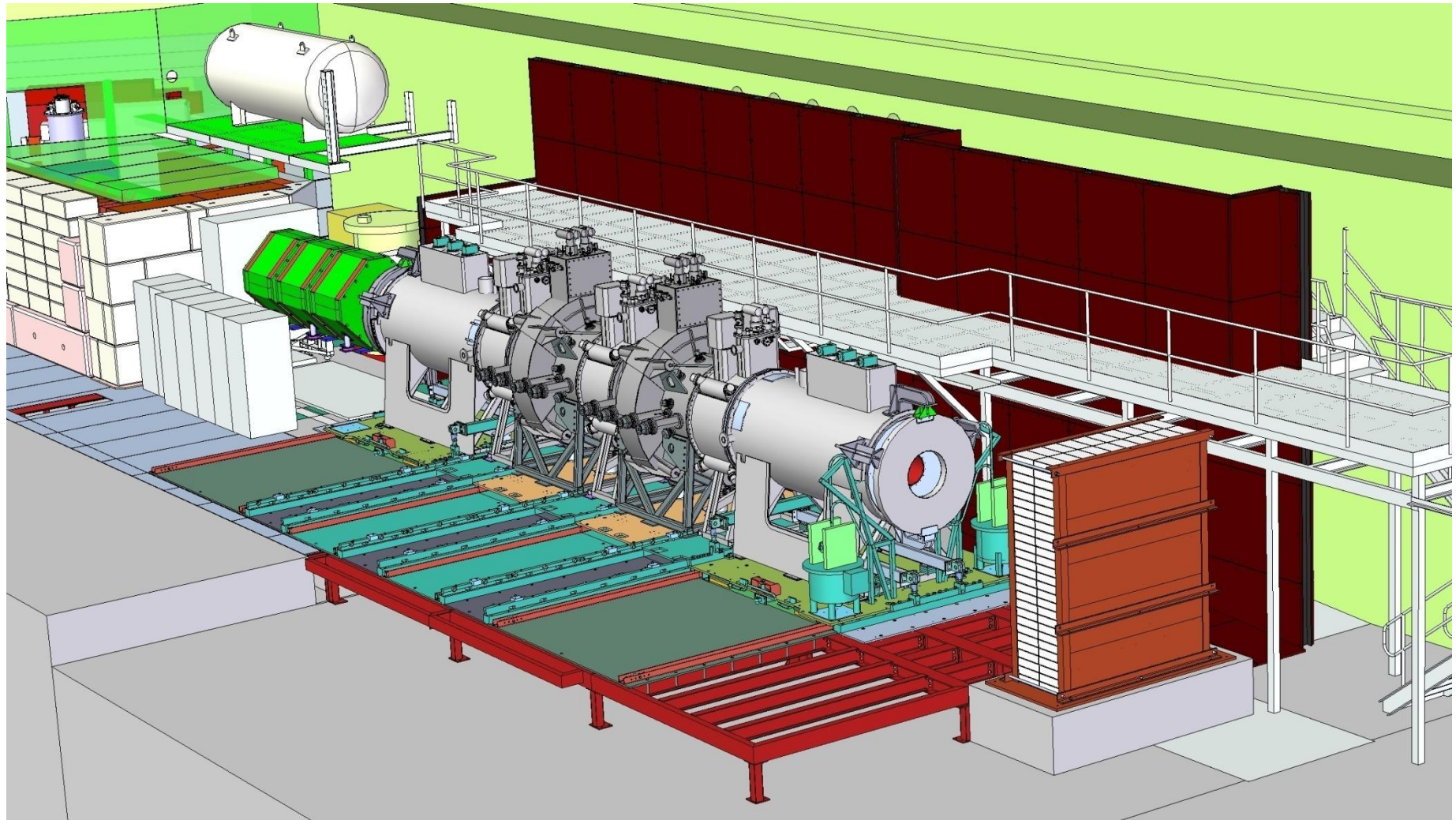


.....Circa 2007



Circa 1963.....

But this is what we're aiming for.....>>



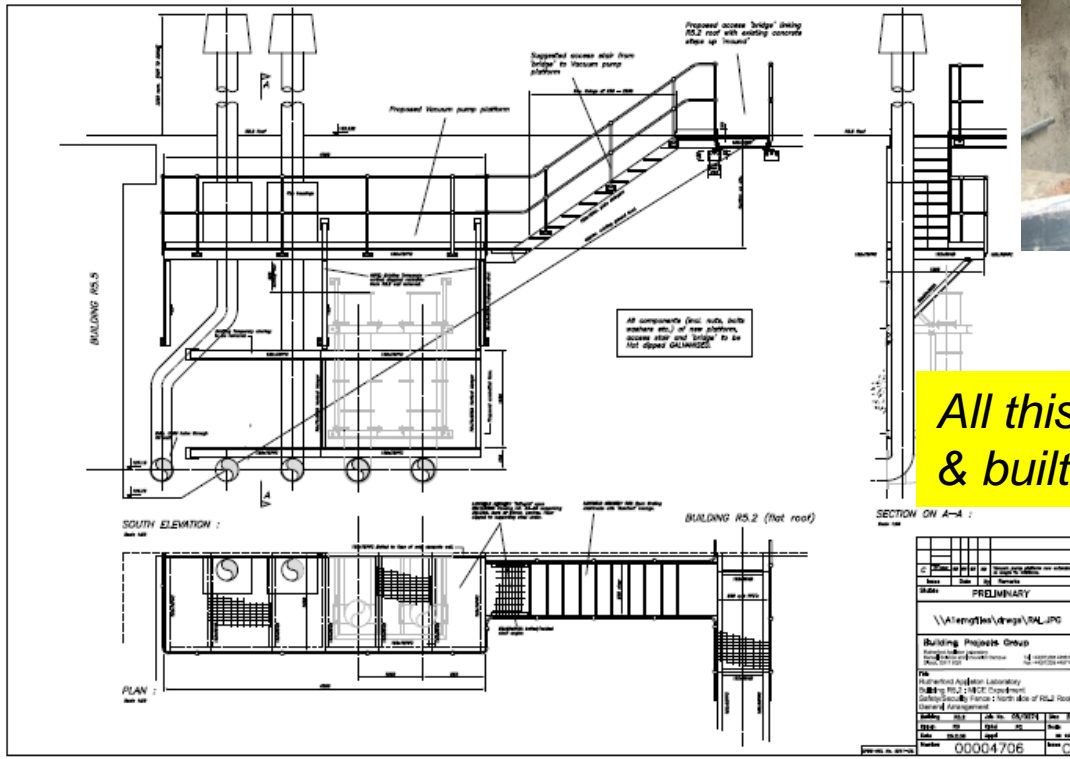
.....Installation of MICE Step VI in R5.2

Re-defining the UK project

- Steps II & III are delayed for *at least eighteen months*
- UK installation team and infrastructure construction were very carefully geared towards spectrometer solenoid #1 arriving at *May 15th* and #2 six months later
- We must hold the project team together, so:
 - *Advance work on the LH2 system*
 - *Vent system*
 - *Civil engineering*
 - *Pipe/valve & gas panel work*
 - *Control and safety engineering*
 - *RF power work*
 - *Design of waveguide/power/cooling infrastructure, placement of amplifiers*
 - *Specification and procurement of hardware with US*
 - *'Hands on' work at DL with RAL team – second LBNL amplifier*
- *Both RF & LH2 projects contain significant technical risks – better to find out early*

LH2 external infrastructure

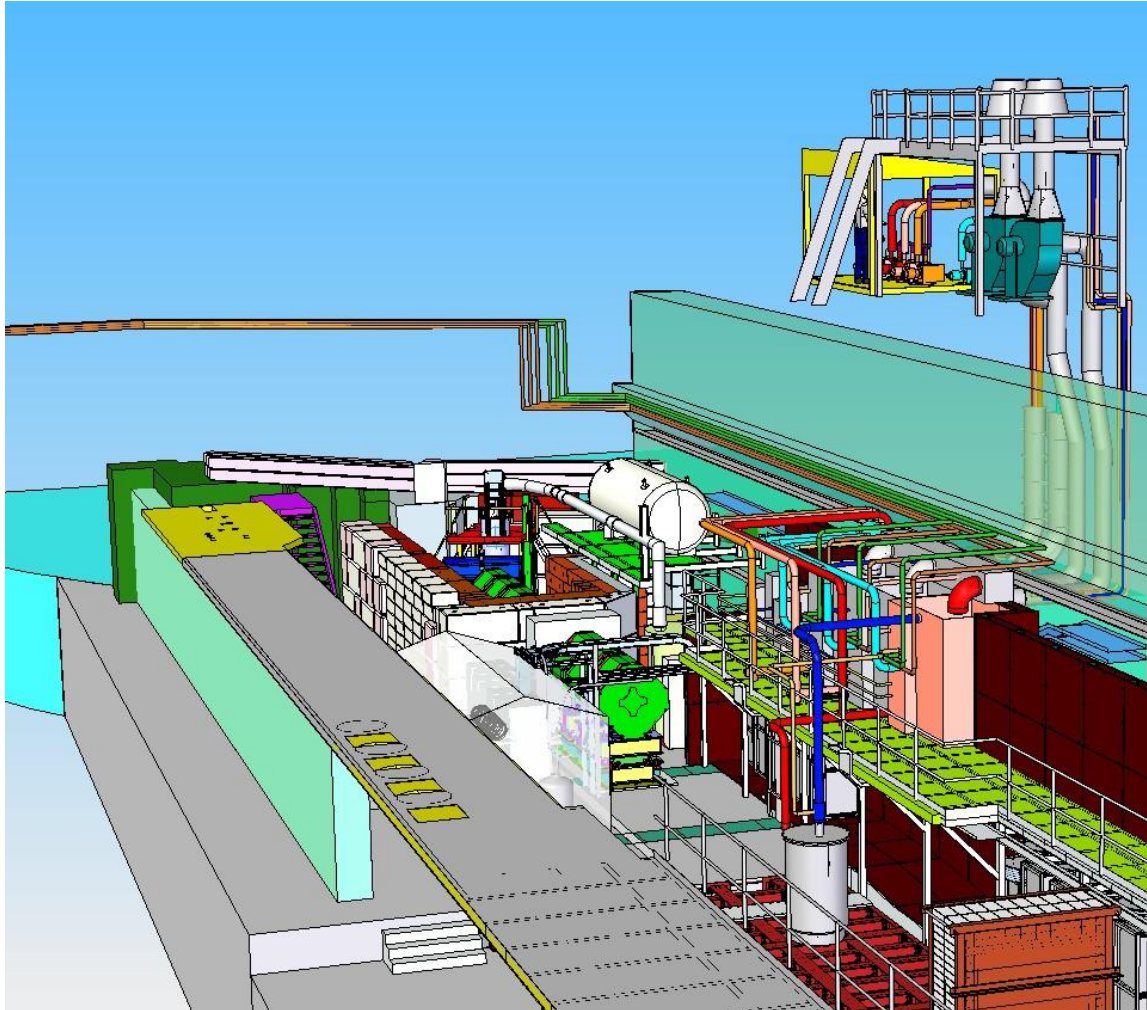
Extensive civil and mechanical engineering, design and installation working with BPG & ISIS



All this has to be designed & built outside R5.2.



And it's a similar story inside.....



*This is 'just' the R&D system,
much design, procurement
and installation required
Also controls and safety work*

*There is also a huge and
understandable safety
overhead, but good
progress already made*

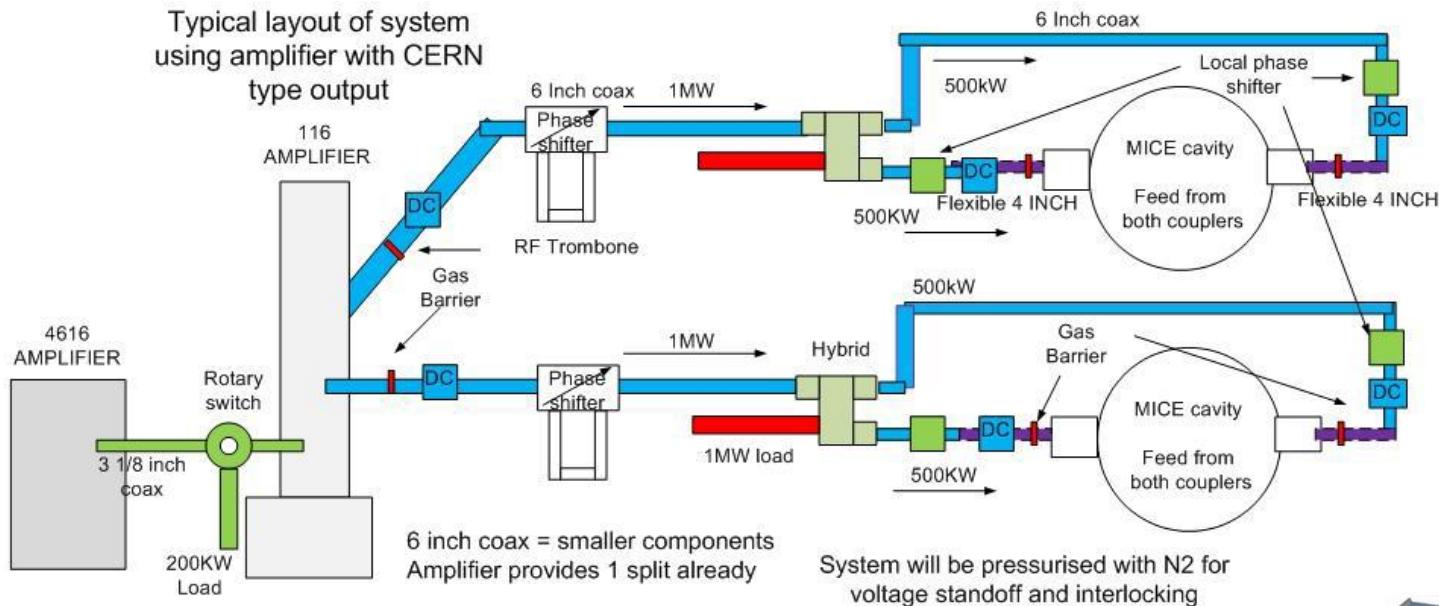
*Must not underestimate
the LH2 work content.....!
See later this week*

RF Power

- *Two RF amplifiers from LBNL are being reconditioned at DL*
 - *One is complete, the other is waiting*
 - *Plan to deploy some of existing RAL team on second amplifier*
 - *Important to do this early while we have time*
 - *Led by Daresbury Lab*
 - *Very beneficial DL/RAL relationship*
 - *RF amplifiers quite big, 4m high and 1 tonne – we have to fit four of them in a very confined space behind shield wall*
- *Ultimately, STFC has to provide and support an RF power station*



Typical layout of system
using amplifier with CERN
type output



4616
AUXILLUARY
RACK

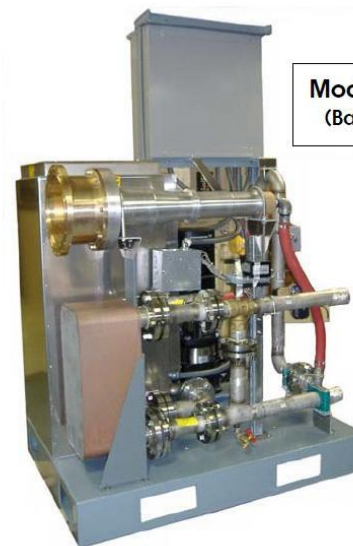
4616
HT

116
AUXILLUARY
RACK

116 HT RACK &
CAPACITOR BANK

Need to fit all this.....

DC = directional coupler=



.....Under here!
Not trivial....

Schedule things

- *Believe that we need to emphasise schedule planning this week*
 - *MICE is in a vulnerable position just now:*
 - *Recovery plan for the spectrometer solenoids absolutely essential for credibility of the top-level schedule*
 - *Much discussion this week I hope.....*
- *ISIS long shutdown has been planned in detail*
 - *Effectively begins 15th August*
 - *User run 2010/03 begins 1st March, 2011*
 - *Will be unlike other shutdowns, very limited access and a separate CDM regime*

Apologies and accommodation

Appalling treatment from Ridgeway House

- *Block reservations made early were not honoured*
- *Can only apologise to MICE and hope alternative arrangements were acceptable*
- *For the future:*
 - *Have been invited to submit case by end July for permanent MICE rooms in new wing of Ridgeway*
 - *New wing opens in September 2010*
- *Rose is also actively following House rental in Chilton:*
 - *Either rent complete three bed house, or*
 - *Rent three rooms in eight-bed house*
 - *Needless to say, we are entangled in STFC legal hurdles just now*
 - *disappointing*
- *Suggest that for future UK CMs we just book a hotel/conference centre – Warwick springs to mind.....*