

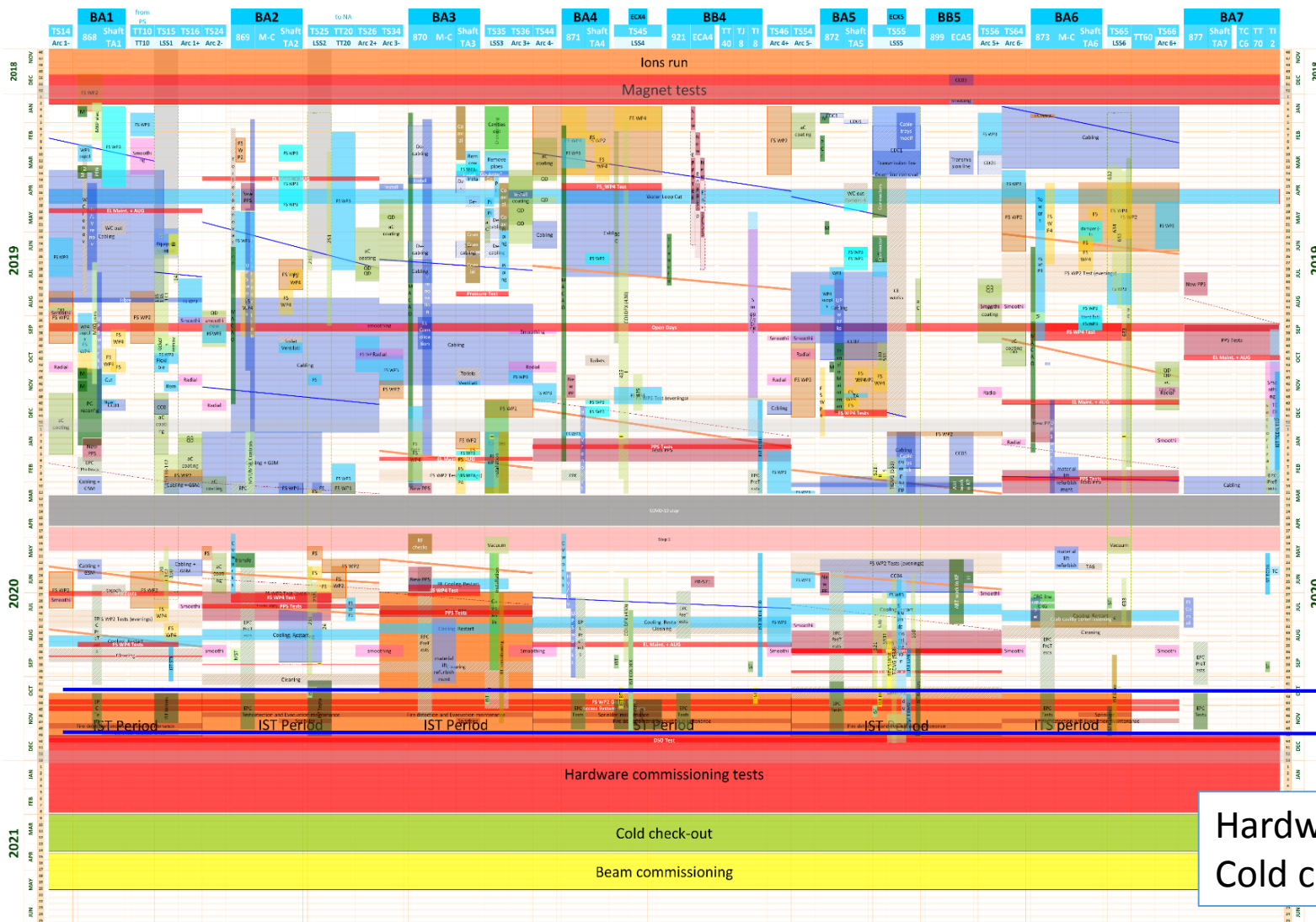
# SPS-crab cavity test stand recommissioning

G.Vandoni

- SPS main dates
- Planning test stand closure
- Cooldown & RF conditioning
- Summary

# SPS main dates

SF1 cooling tower maintenance, primary water week 49



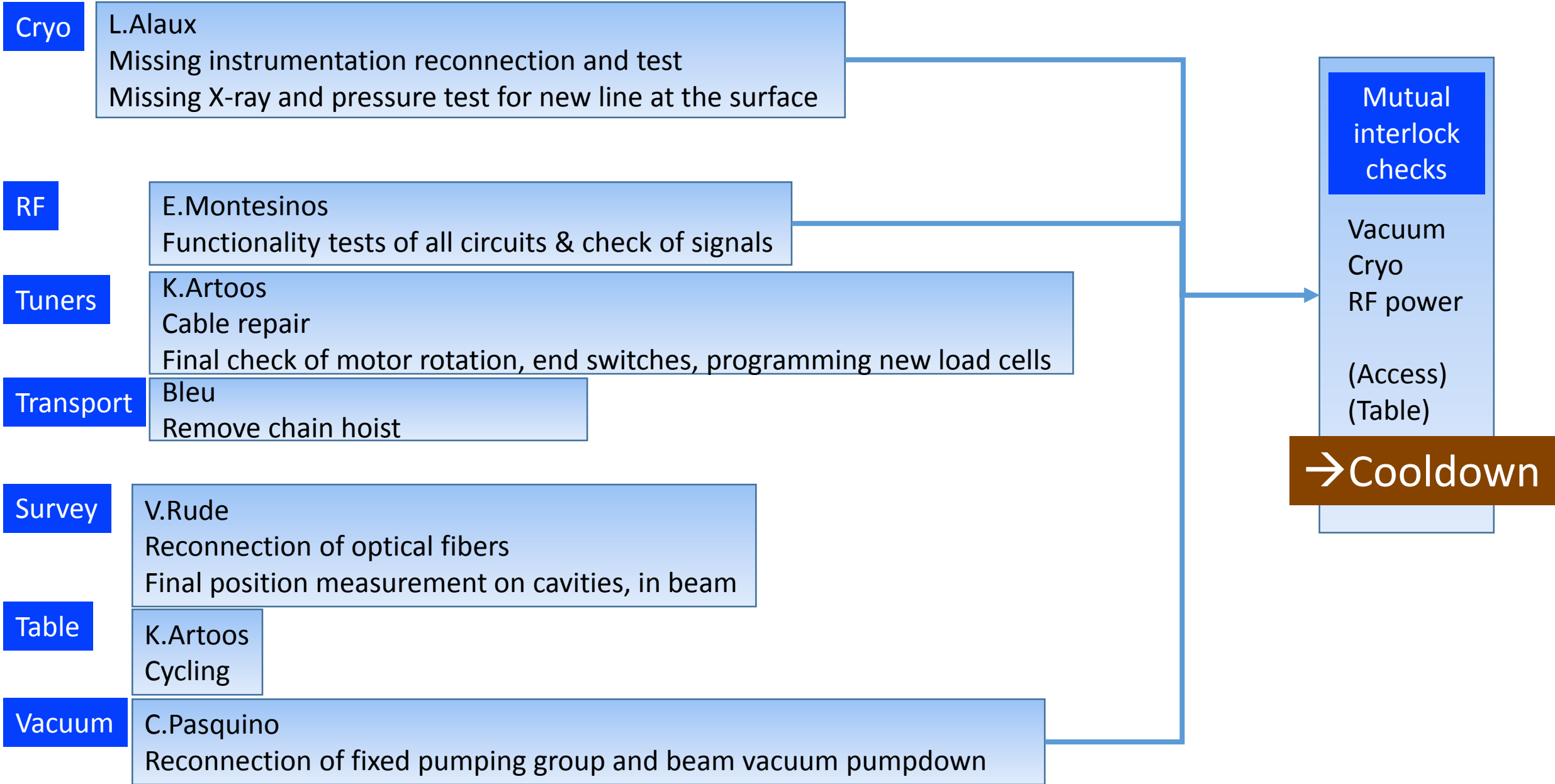
End normal access: 16<sup>th</sup> October  
19 Oct (week 43)

26-30 Oct: SPS closed (Fire)  
2-6 Nov: SPS closed (PPS)

IST

4 Dec (week 49)

Hardware commissioning : 7th Dec - 26th Feb 2021  
Cold check-out: 1st March-9th April 2021



# Cooldown & RF conditioning – our requests

Request	Requisites	Link	Duration
Cryogenic commissioning	<ul style="list-style-type: none"> <li>▪ Power</li> <li>▪ Network</li> <li>▪ Water (raw)</li> <li>▪ Vacuum (beam &amp; insul.)</li> </ul>	L.Alaux S.Claudet (G.Vandoni)	2 weeks (1 may be    to RF start)
DSO tests	<ul style="list-style-type: none"> <li>• The above</li> <li>• PPS operations</li> <li>• Tables</li> </ul>	D.Vaxelaire C.Gaignant (G.Vandoni)	1 day
RF commissioning & cavity conditioning	<ul style="list-style-type: none"> <li>▪ The above</li> <li>▪ Water (demi)</li> <li>▪ SPS access closed status</li> <li>▪ Cryomodule cold</li> </ul>	E.Montesinos (G.Vandoni)	5-7 weeks Continuous

Scheduled during Hardware commissioning

# NOTES from meeting

V alkfdvf