

A dark blue world map is centered in the background of the top half of the slide. The map shows the outlines of continents in a slightly lighter shade of blue.

{iaps}

International Association of Physics Students

Elora McFall  
Advocacy and Outreach Manager



The international link for physics students and young physicists around the globe

**SUPPORT**

young physicists

**BUILD**

international bridges

**ENCOURAGE**

peaceful international collaborations

**PROMOTE**

professional & social networking



The international link for physics students and young physicists around the globe

**FOUNDED**

12th September 1987, Budapest

**CHARACTERISED**

non-profit, non-governmental

**HQ**

Mulhouse, France with EPS

**GOVERNED**

executive committee, subcommittees

# Structure

**Executive Committee**

President

Secretary

Treasurer

Membership

Recruitment

Events

Advocacy  
Outreach

PR

IT

**National Committees**

**Local Committees**

**Individual Members**

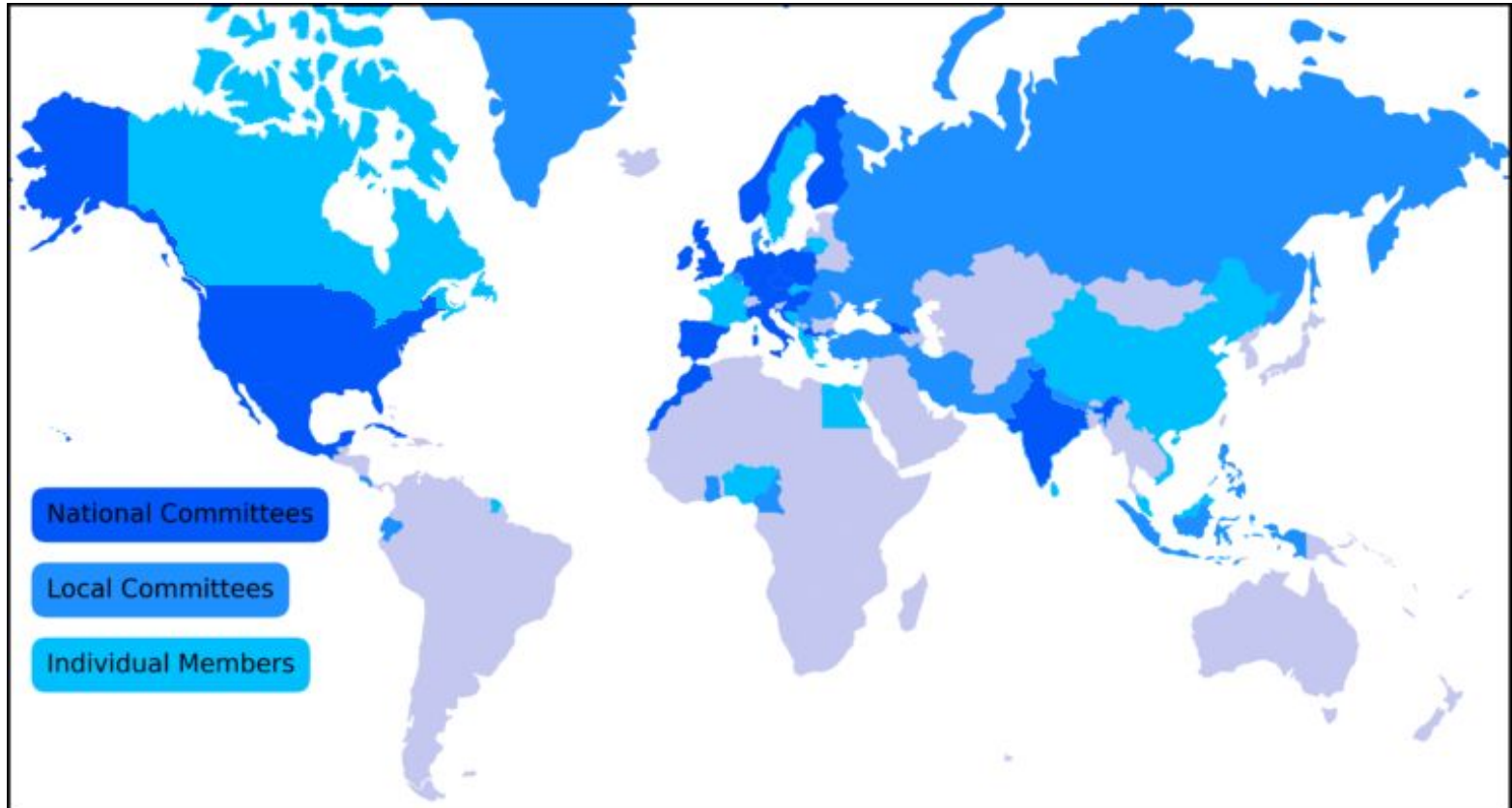
**21**

**21**

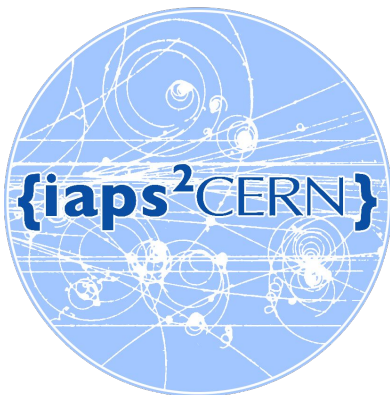
**3**

**Total Members: 65,000 <**

# Members



# Events



PUEBLA  
ICPS  
2020



International  
Day of Light

16 May

{iaps}  
School Day



# External Relations



African School of Fundamental  
Physics and Applications



**IUPAB**  
CONNECTING THE  
WORLD OF BIOPHYSICS



## Outreach Impact Statements

“In primary school, my class went to a science show in a local theatre. I was amazed by the cool demos and it sparked my interest in science!”

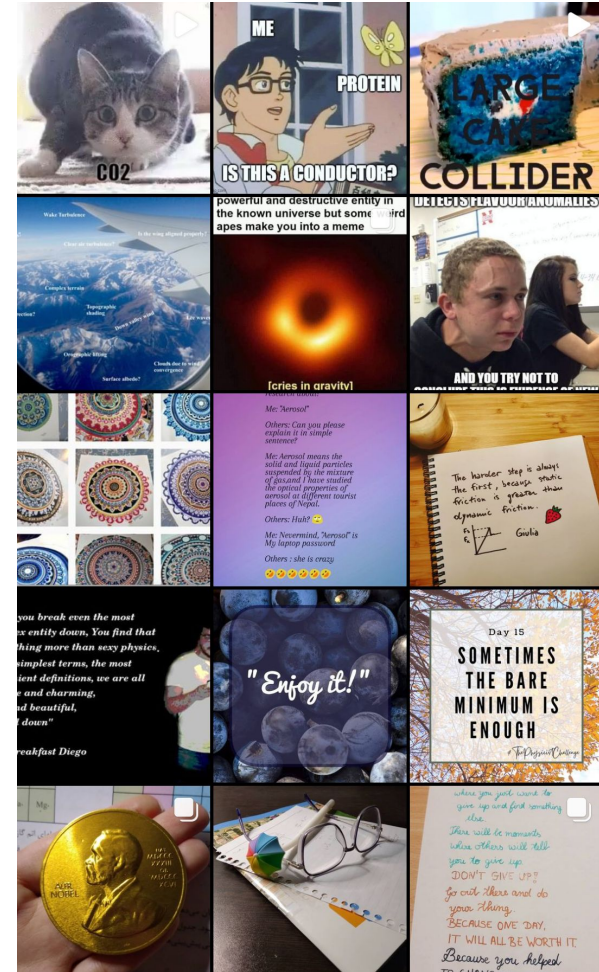


## Why Physics?

From the physics students themselves

### #ThePhysicistChallenge

on Instagram for some perspectives!



# IAPS & IPPOG

**IAPS school visits  
linked up with an  
IPPOG scientist**



# THANK

Go raibh míle maith agat

# YOU!



[elora.mcfall@iaps.info](mailto:elora.mcfall@iaps.info)



[@EloraMcFall](https://twitter.com/EloraMcFall)

