

WP3: Status and Plans

Francisco Sanchez Galan (EN-EA-PE)
Liam Dougherty (EN-ACE-INT)

22 October 2020
FASER LS2 work coordination meeting

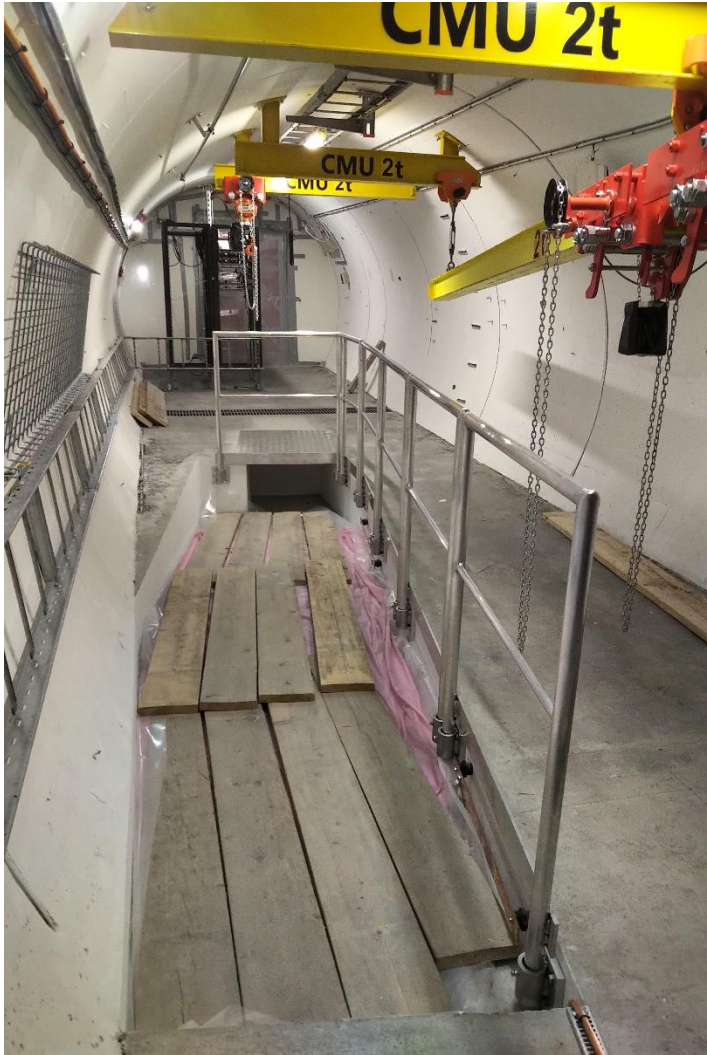


ENGINEERING
DEPARTMENT

Work done from 09/10 – 22/10

- UJ12/TI12 Barrier, Handrails, Connections and Trench Platform Installed (15/10 – 16/10)

Guard Rails and Trench Cover TI12



Guard Rails T112

- Connection holes slightly oversized ($\varnothing = 14\text{mm}$).
However, for pure tension, oversized holes not an issue.
- First downstream guard rail (trench depth $\approx 150\text{mm}$)
HKD 50mm M12 anchors used.
- Work stopped and for the remaining handrails, HST3
110mm anchors were used.

Guard Rails and Access Barrier UJ12





ENGINEERING
DEPARTMENT

WP3 Completed!