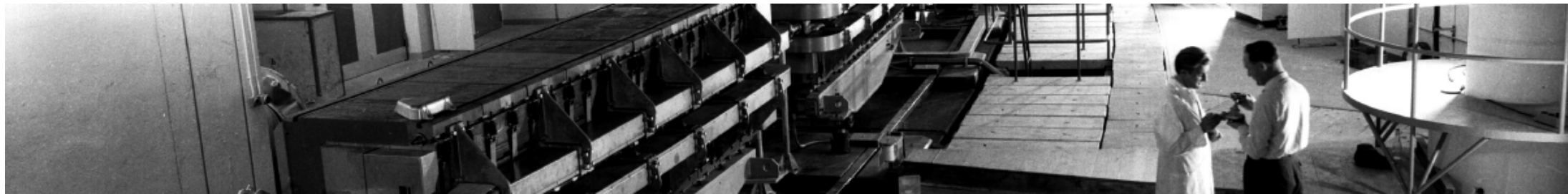


PS Hardware Commissioning



Many thanks to: Fernando, Denis, Franck, Raul, Fabrice, Abdel, Marc, Stephane, James, Yves, Carlo, Heiko, Alexandre, Solve, Laurette

HWC week 48

Monday 23/11	Tuesday 24/11	Wednesday 25/11	Thursday 26/11	Friday 27/11
Audio/Visual patrol POPS+PFW+W8L	Lock-out of all circuits. Remove covers of aux. magnets	Polarity check for LE-correctors	Polarity check for SWY and PSR common circuit	Final SWY polarity check. All circuits are ok.
Implemented EAST knobs in WS	Polarity check for LE-correctors	Polarity check for SWY and PSR common circuit	Lock-out to re-install covers	Correction of identified wrong polarity (only PSR)
	EAST, F61 and F62 polarity check	EAST, F61 and F62 heat run	Correction of identified wrong polarity (only SWY)	Access for RF and survey
		DR for KFA4, 13, and 21		

HWC week 49

Monday 30/11	Tuesday 01/12	Wednesday 02/12	Thursday 03/12	Friday 04/12
Correction of identified wrong polarity (only PSR)	PSR aux. magnets polarity check.	PSR aux. magnets polarity check.	<i>Access PSR t.b.c.</i>	<i>Access PSR t.b.c.</i>
DR synchronous pulse of SMH42 and BSW42	YASP for LE- correctors	Lock-out to re-install covers	RF control from CCC	RF control from CCC
All week SEM-Grid installation n-TOF				
TT2 vacuum: RP and MME worksite inspection	TT2 vacuum: Prepare worksite to start intervention in week 50			

In words (comments, questions, issues....)

- Safety
 - PSR zone 3, shielded bridge above the machine is “out of safety chain” to allow access to the zone.
 - n-TOF additional fences has been installed to block access via the cooling station and n-TOF primary. Yesterday DSO team gave their approval.
 - VIC in preparation for co-activity. F16.BHZ377 vacuum chamber repair and n-TOF circuit commissioning
 - For week 50 planned repair of F16.BHZ377 vacuum chamber. Bending magnet is an EIS-F for SPS. Impact on scheduled SPS DSO test.

In words (comments, questions, issues....)

Audio/Visual patrol POPS+PFW+W8L

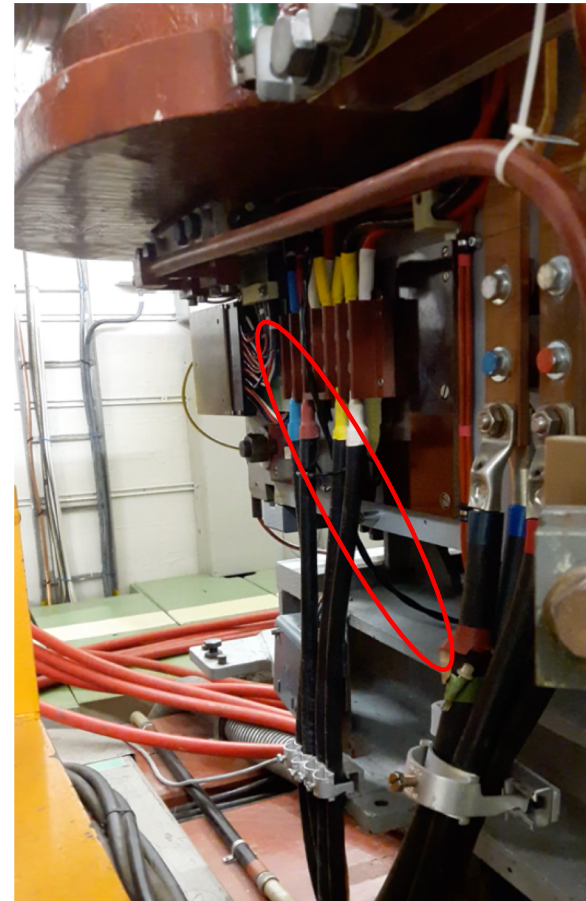
- First time pulsing all circuits together.
- Some MU have a noise coming from the Low Energy DHZs (backleg winding). New insulation type is more flexible and hits the vacuum chamber during MU pulses. Not critical and TE-MSD will work on an fixation improvement.
- Additional strange, bizarre noise, like fast pulsing magnet. Could be identified from the W8L circuit. The programmed function (pre-LS2) has singularities. FGC63 regulation follows the function, which results in big overshoots. No easy fix as this has an impact of the Working Point. To be followed up with SMWG, ABP, and OP

In words (comments, questions, issues....)

Audio/Visual patrol POPS+PFW+W8L



W8L function



PR.DHZ loop

In words (comments, questions, issues....)

- Polarity check
- New PI.QLB circuit with wrong polarity. Corrected and checked.
- Many Low Energy QSK and DHZ with wrong polarity. SWY corrected and checked. PSR corrected and checked.
- PR.RXNO14 powers XNO in SD 10 and vice versa (cable swap). Ongoing.
- Many thanks to our EPC colleagues for their support and to make all power converters available.

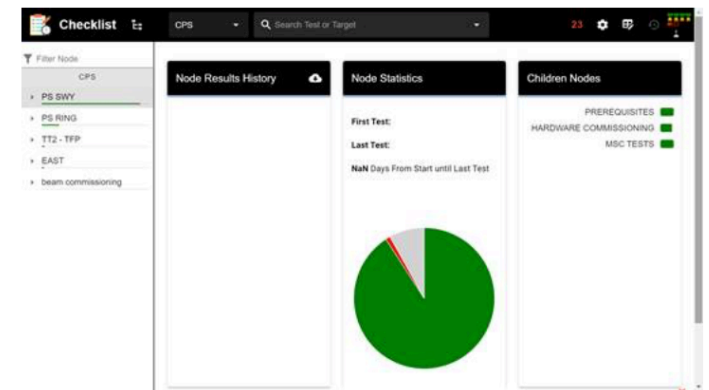
In words (comments, questions, issues....)

- DR KFA4, 13, and 21
 - KFAs are pulsing.
 - KFAs have a minor issue with Acquisition timing.
 - KFA4 Oasis signal saturated. Solved
- KFA45 FESA class ready
 - Update WS
 - DR to be followed
- PS Orbit application
 - Bucket selector is working
 - strange H8 definition on RF user SH16



KFA pulsing

*SWY
checklist*



Comments / Questions

Gantt: <https://oss-coordination.web.cern.ch/gantt/latest>

Do not forget to send email if an IST is done: ist.done.ps@cern.ch

16:30 Daily Zoom meeting

Web address: <https://cern.zoom.us/j/95705566988?pwd=ZVZFOEVLV2dzZDZ0V2FQZzJvZkdRUT09>

Meeting ID: 957 0556 6988

Passcode: 848884