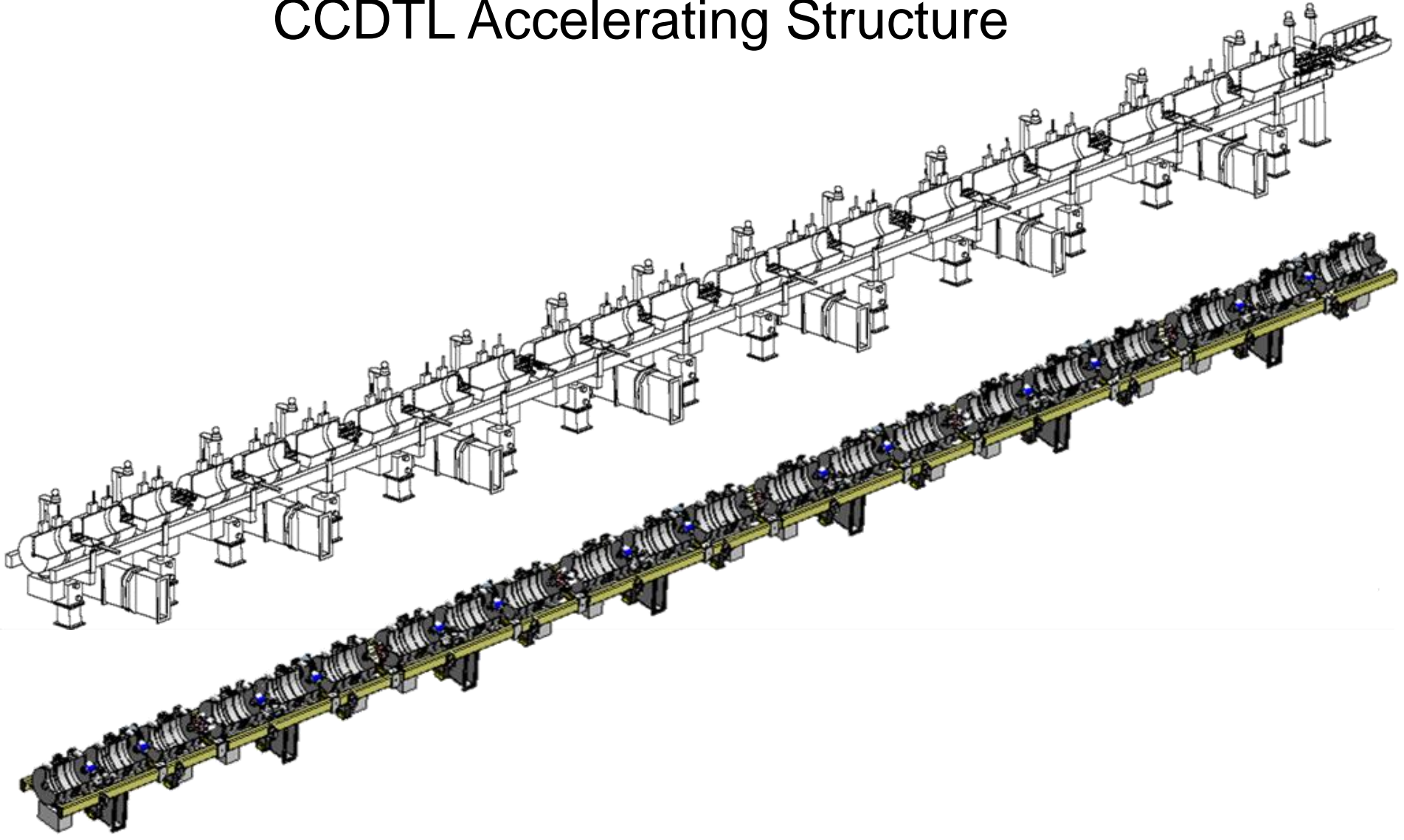


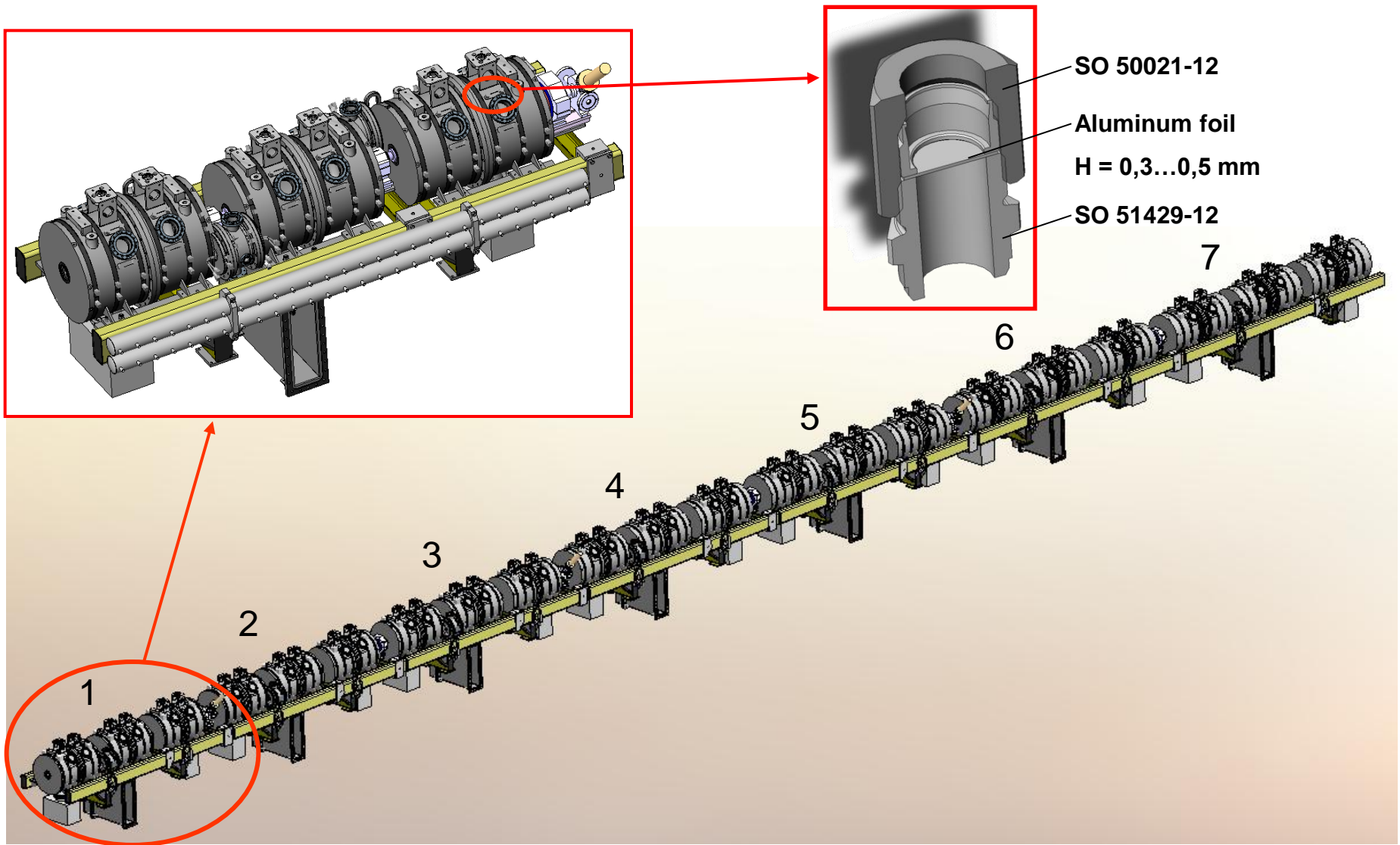


LINAC 4

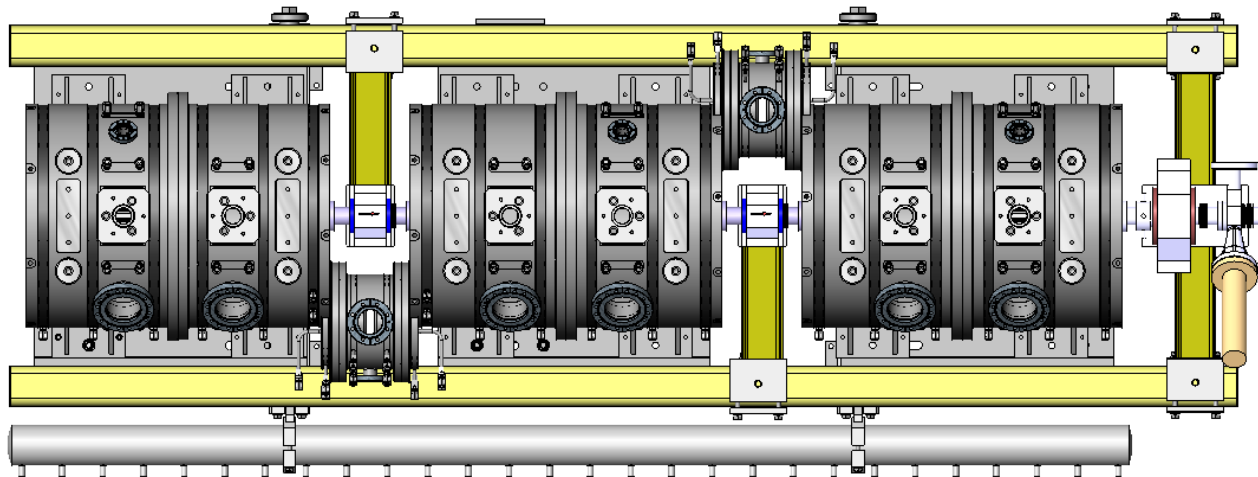
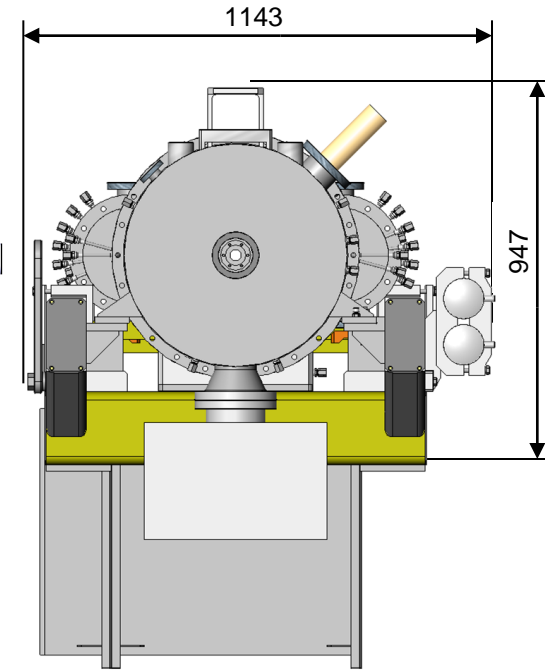
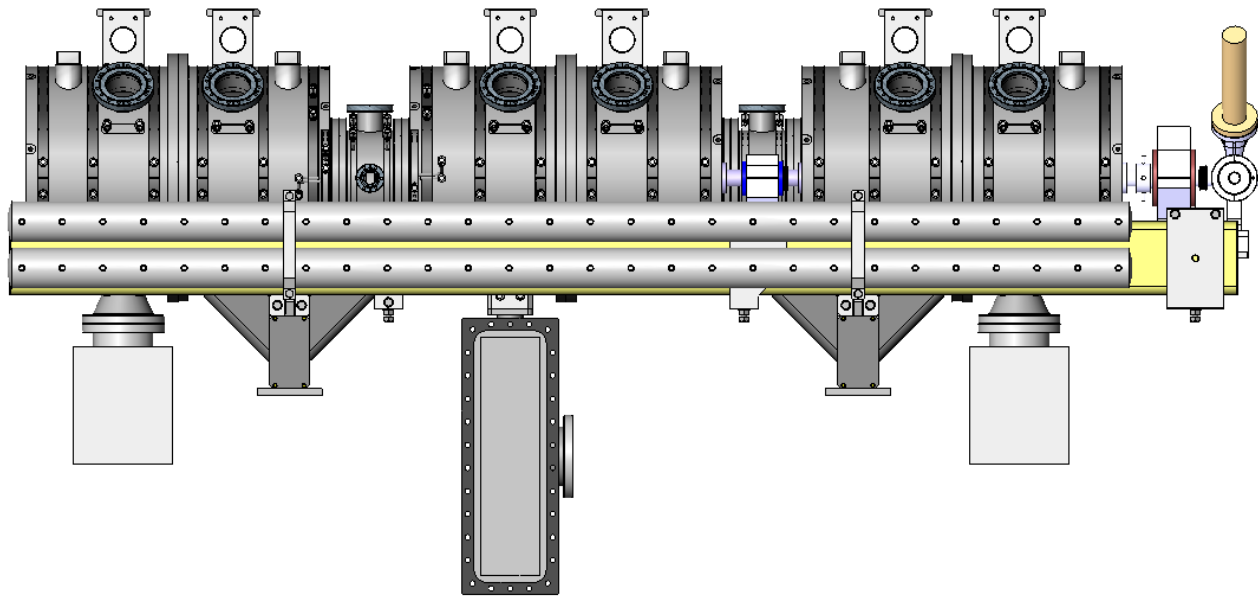
CCDTL Accelerating Structure



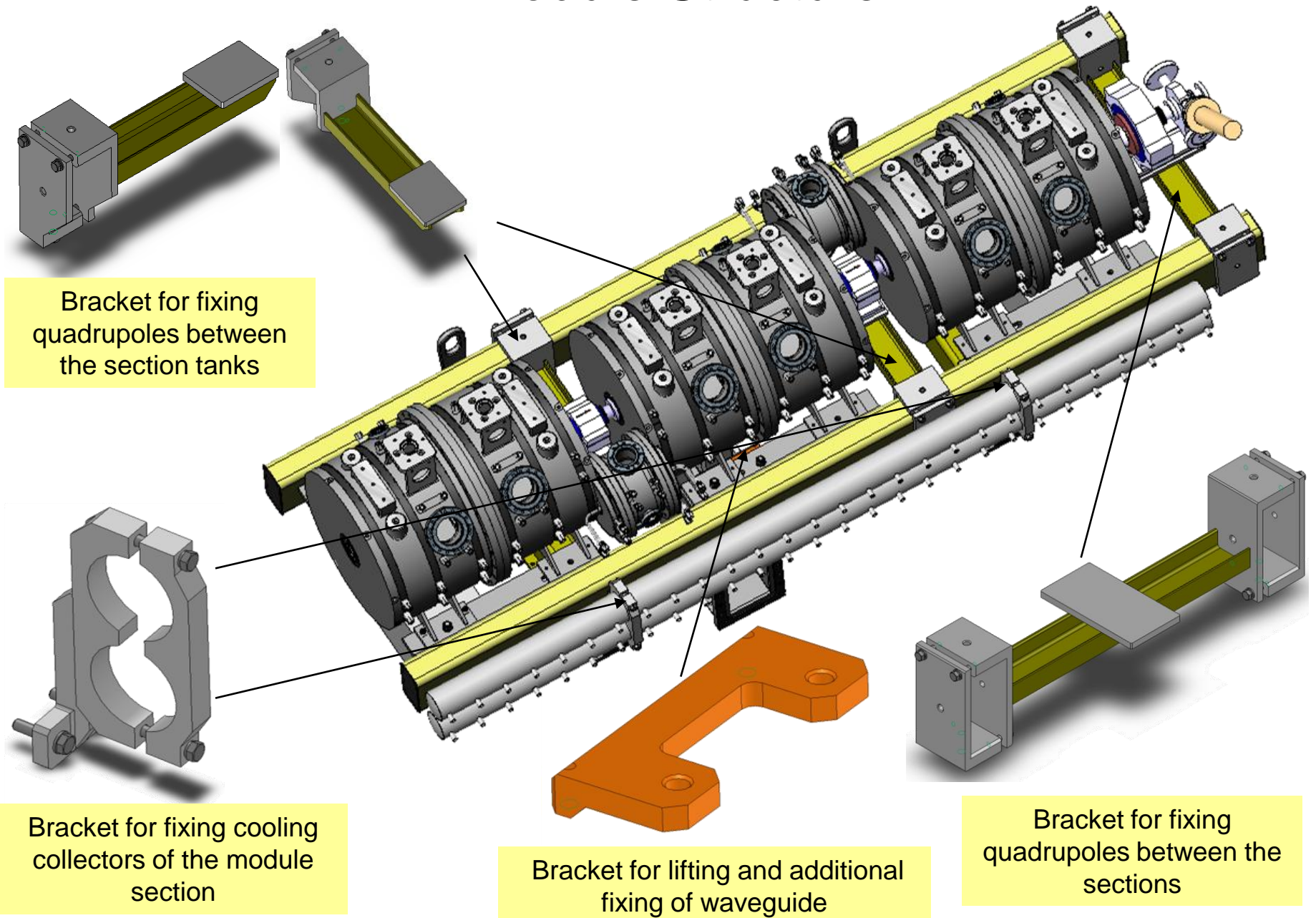
Module of CCDTL Accelerating Structure



General view of CCDTL module



Module Structure



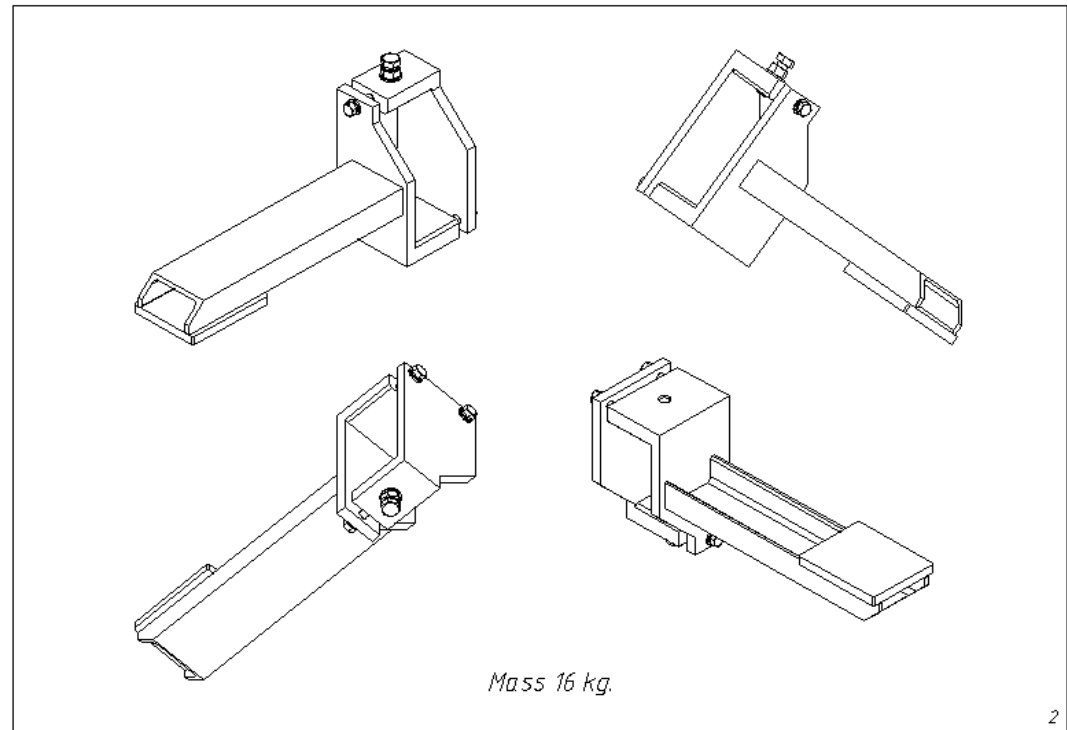
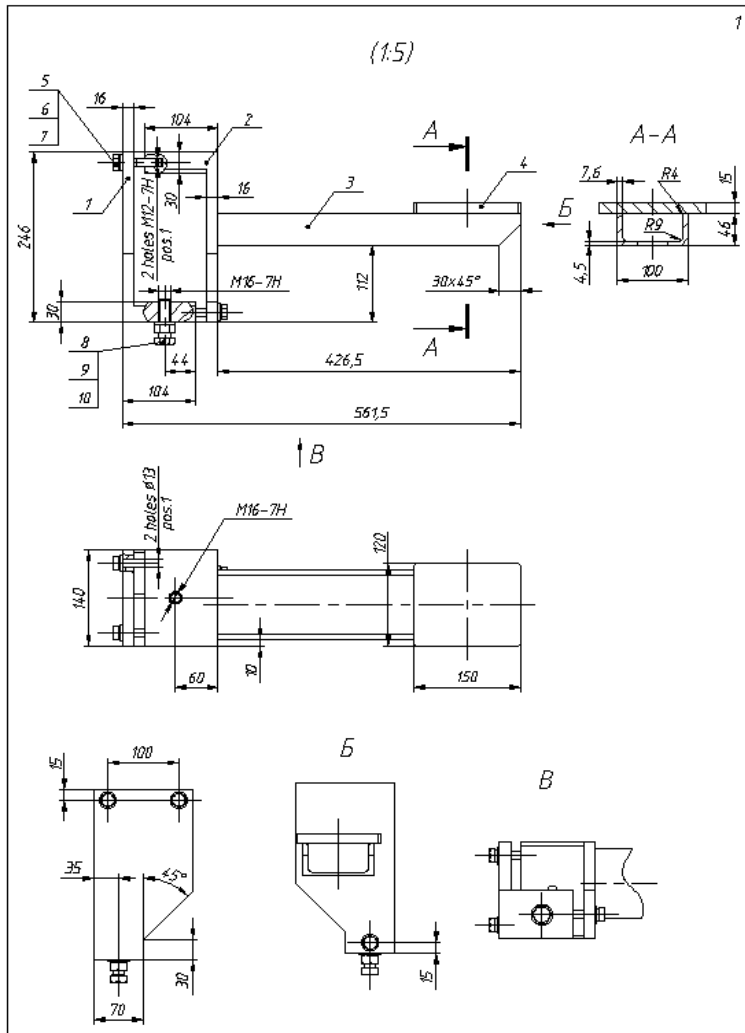
Bracket for fixing quadrupoles between the section tanks

Bracket for fixing cooling collectors of the module section

Bracket for lifting and additional fixing of waveguide

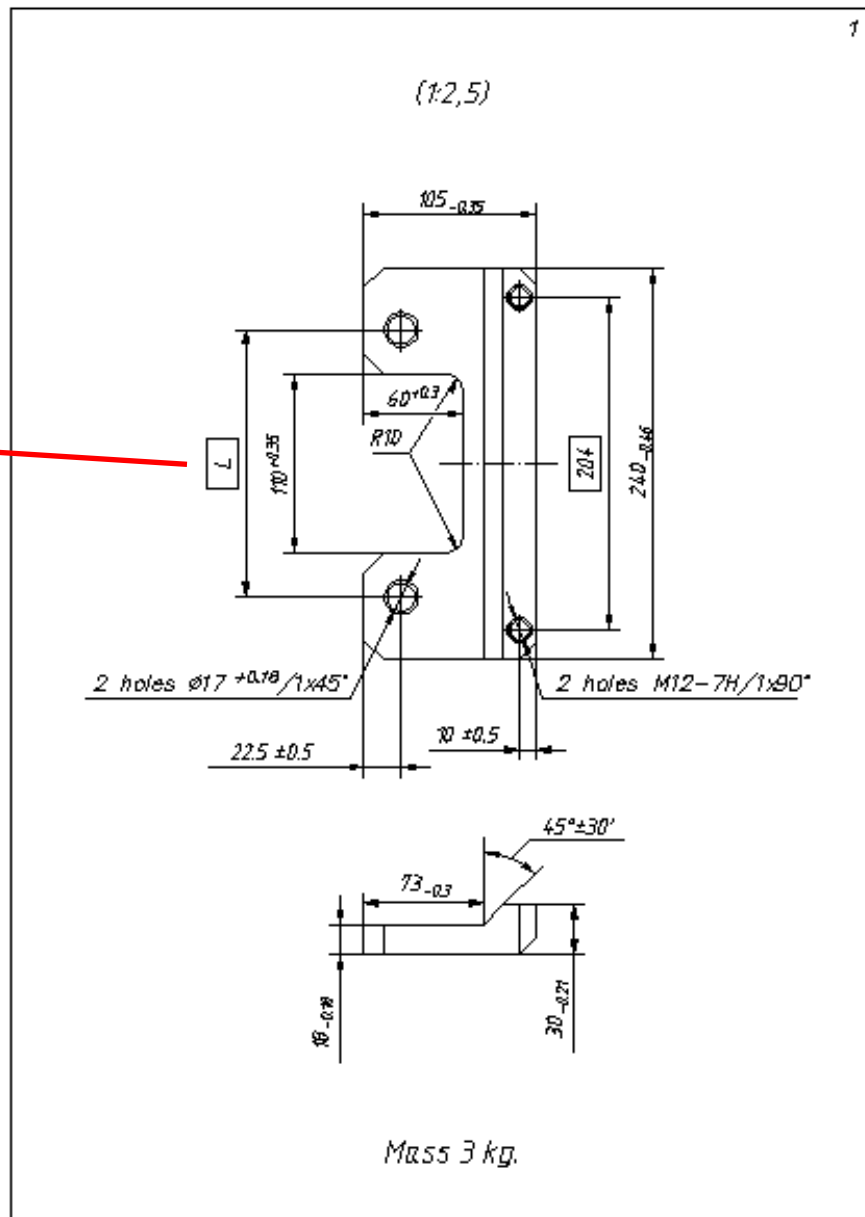
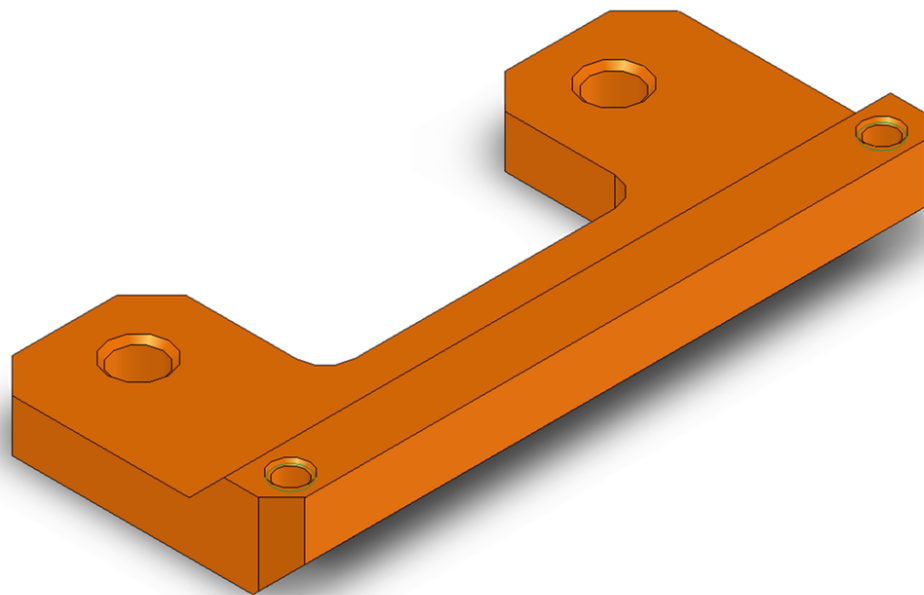
Bracket for fixing quadrupoles between the sections

Dimensions of bracket for fixing quadrupoles between the section tanks

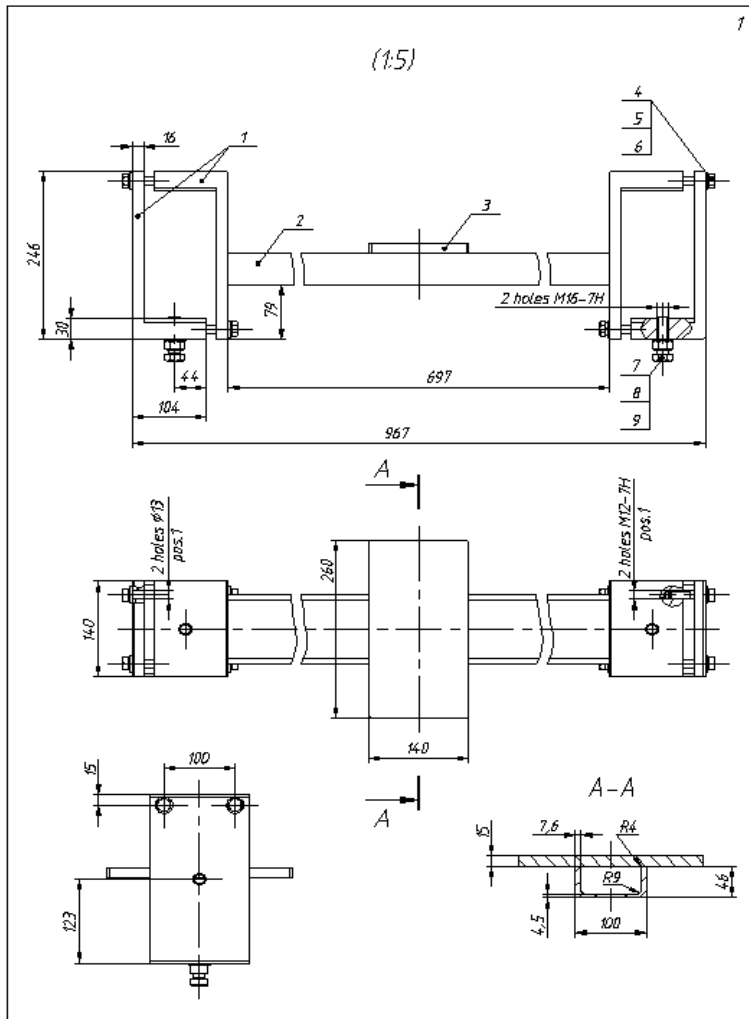


Dimensions of bracket for lifting and additional fixing of waveguide

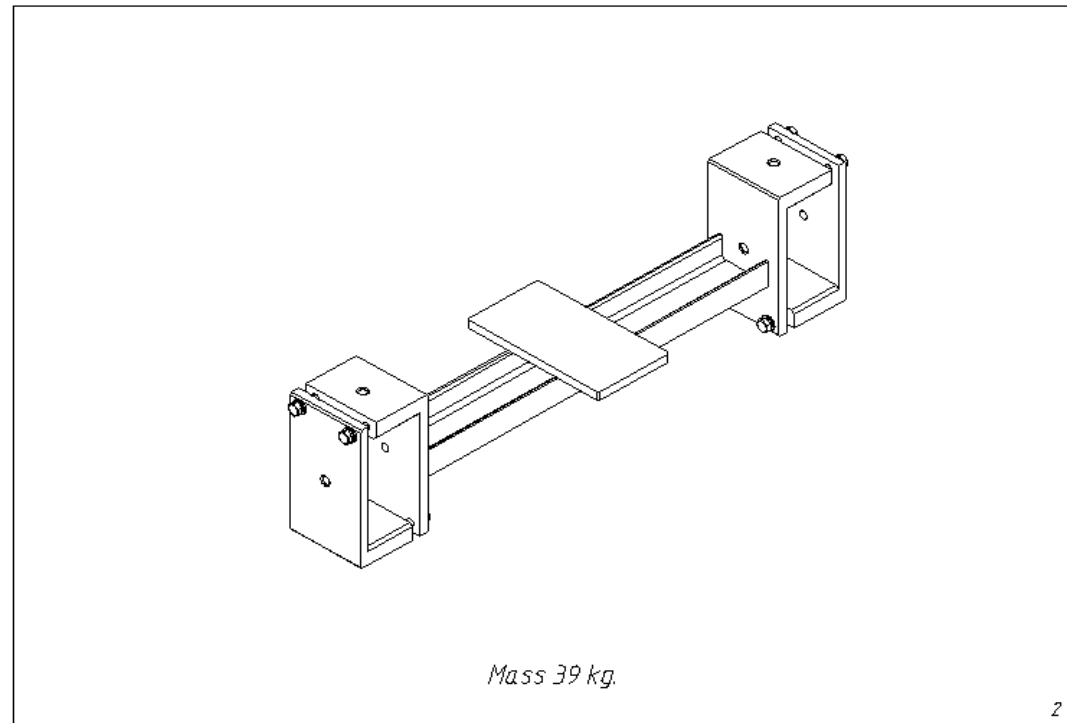
L, mm
164
168
172
176
182
189
196



Dimensions of bracket for fixing quadrupoles between the module sections

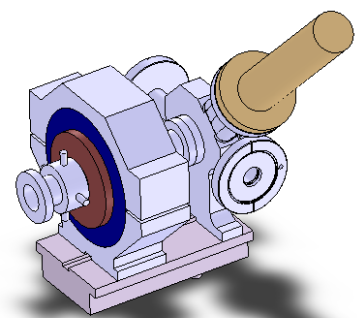


Inter-mod1

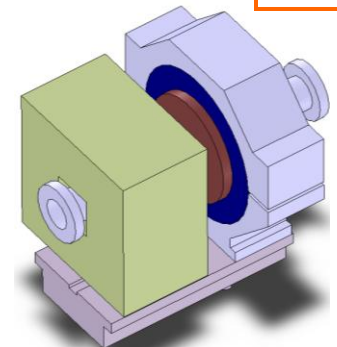


Universal fastener

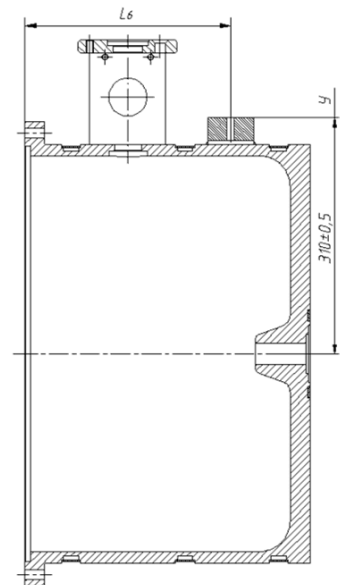
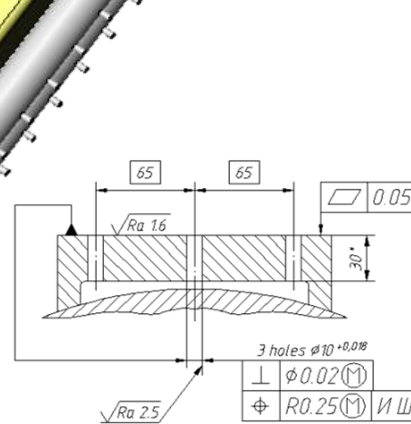
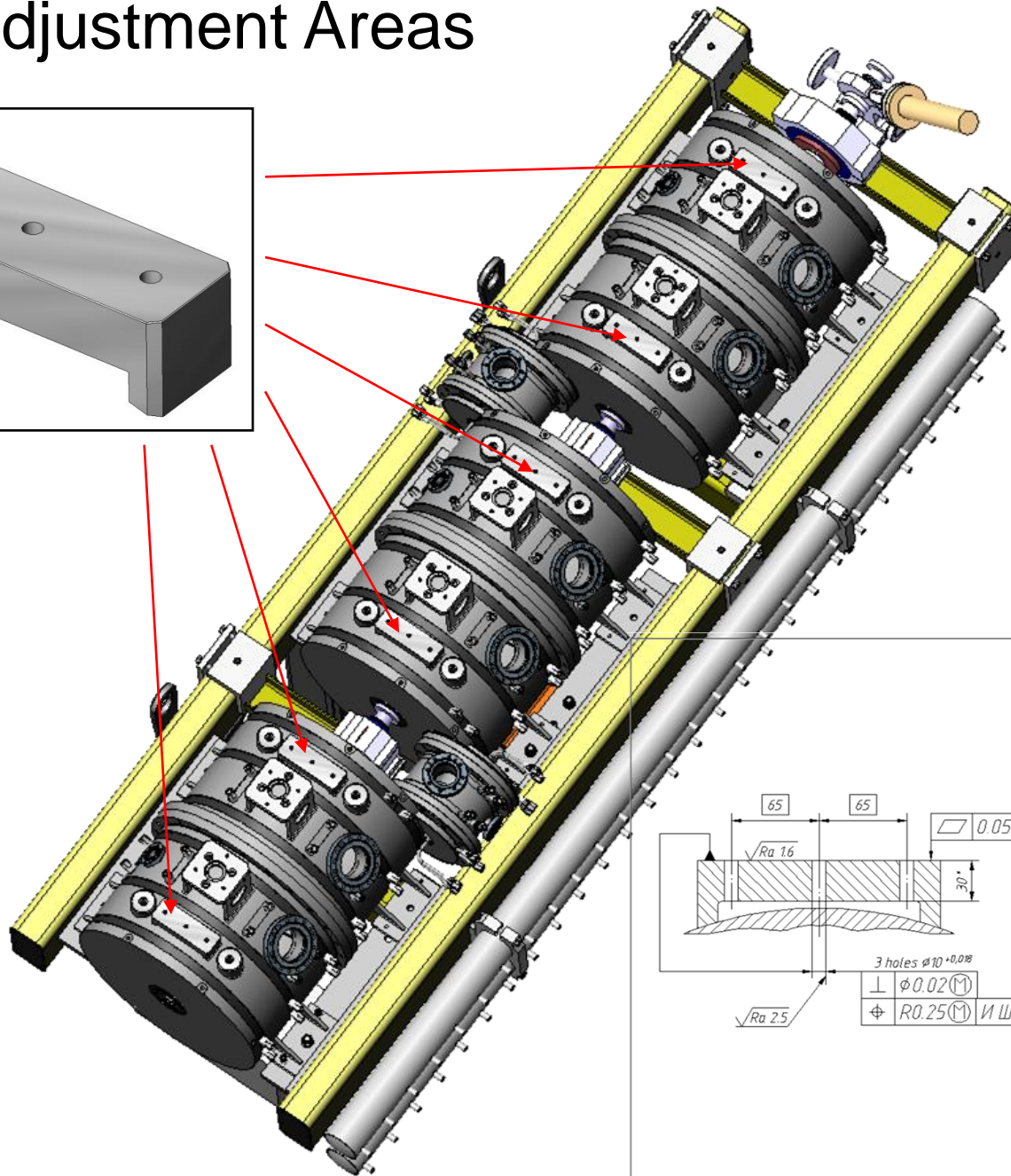
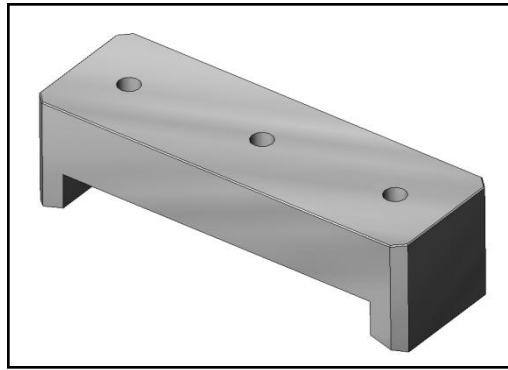
Inter-mod2



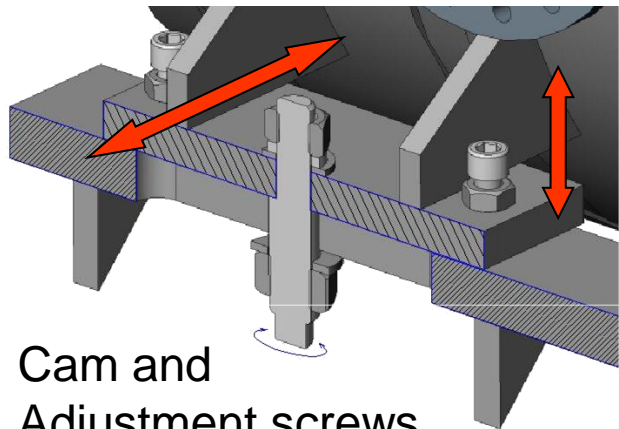
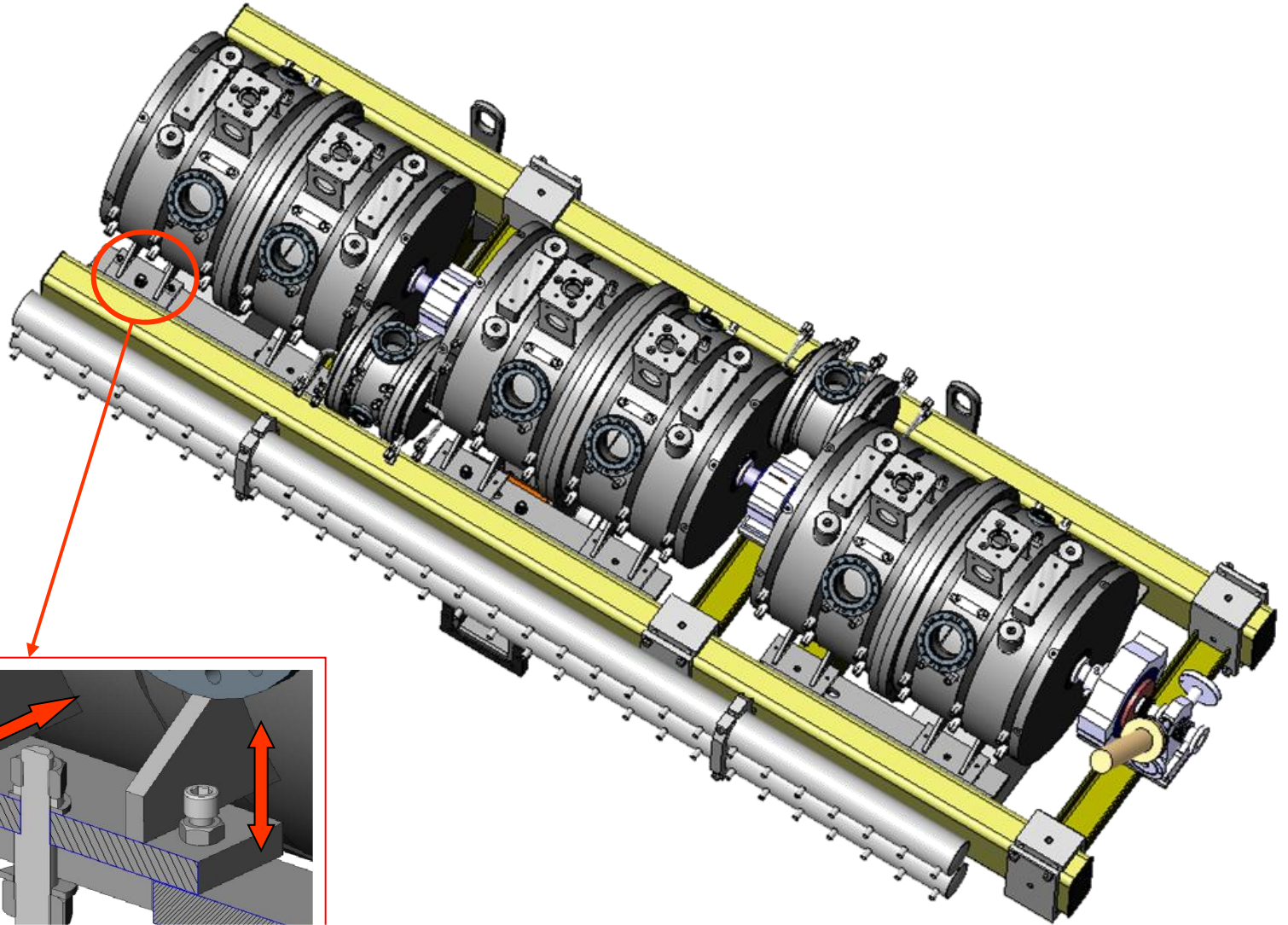
or



Adjustment Areas

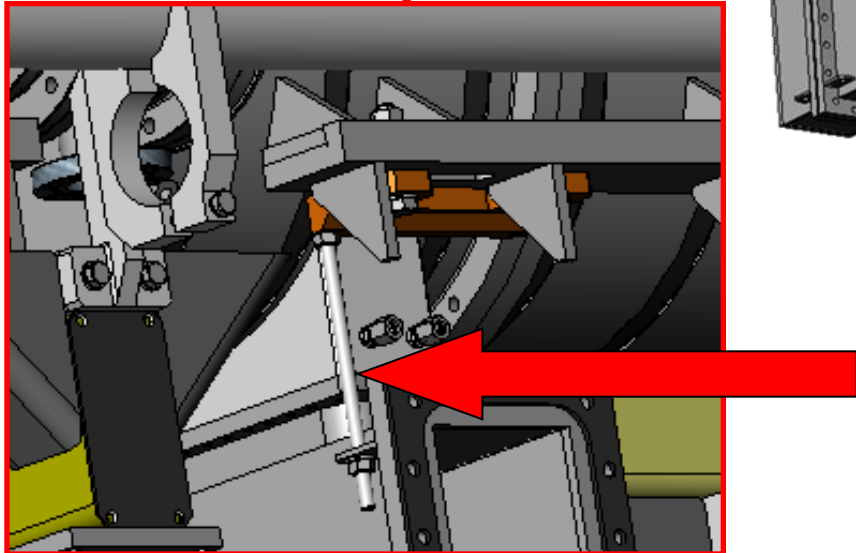
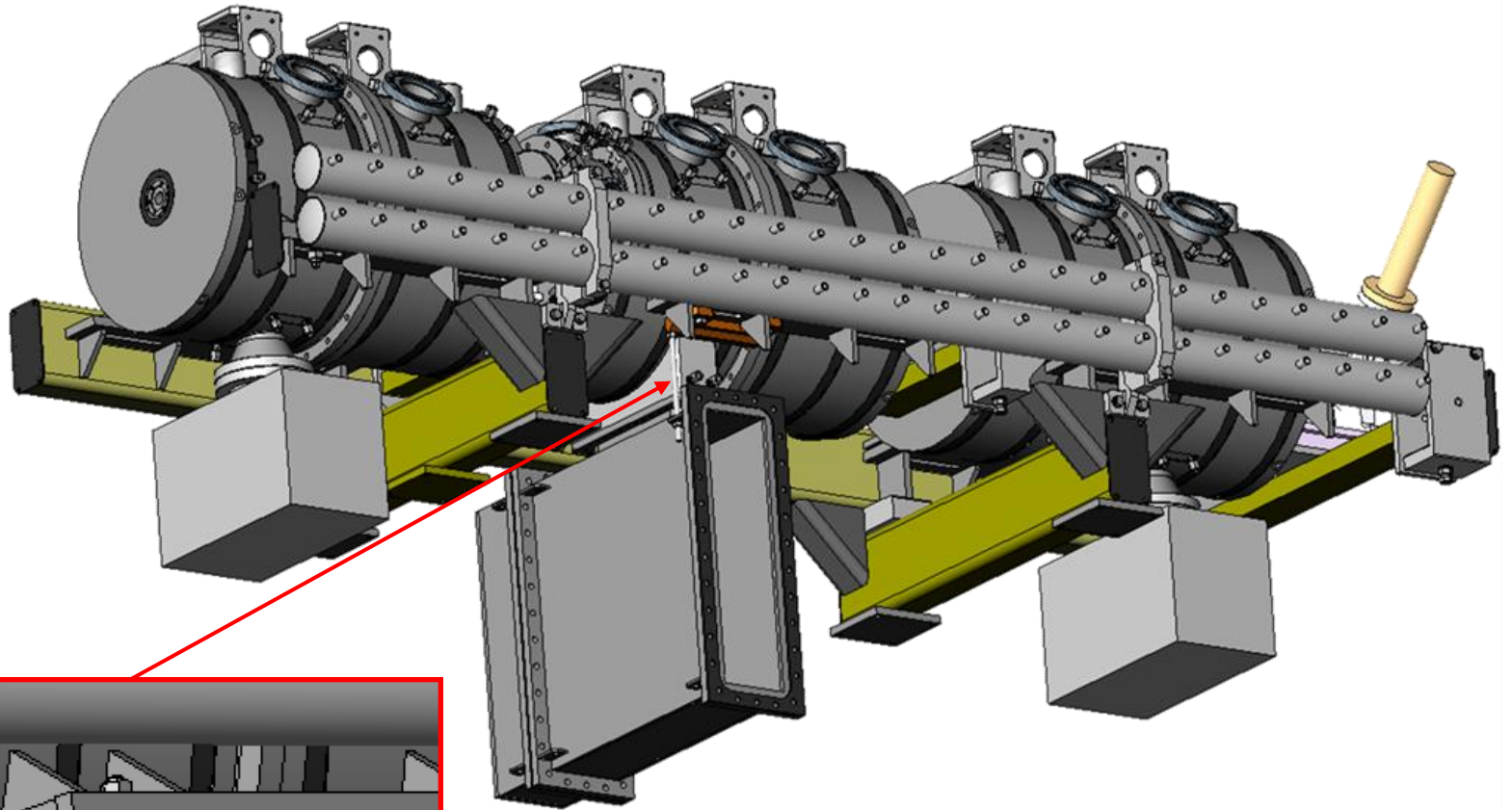


Alignment of Cavities in the Module



Cam and
Adjustment screws

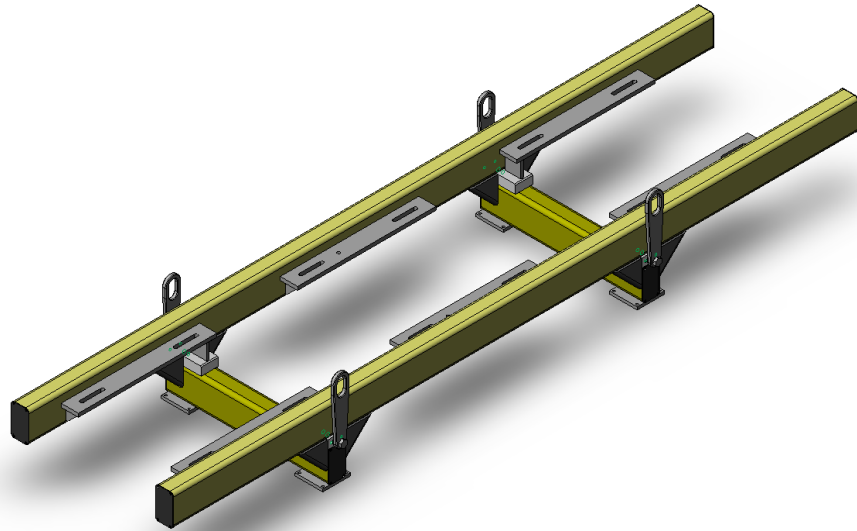
Lift and additional fixation of waveguide section



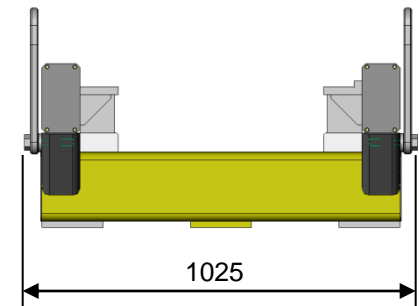
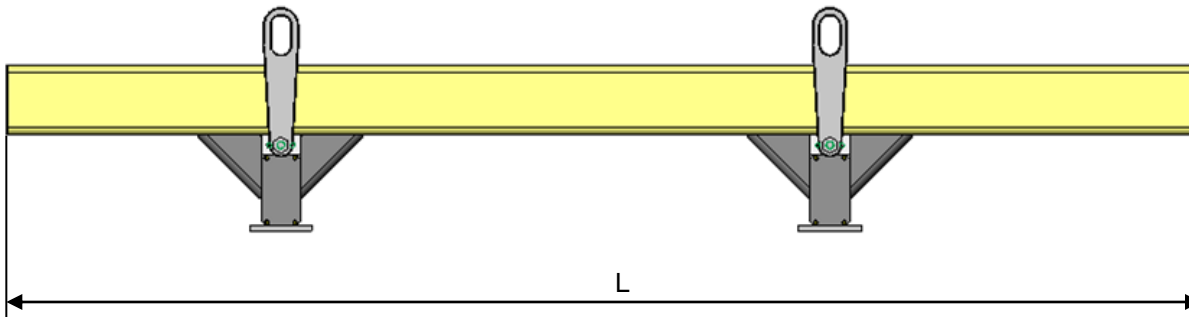
Mounting pins

Module Support Frame

Dimensions

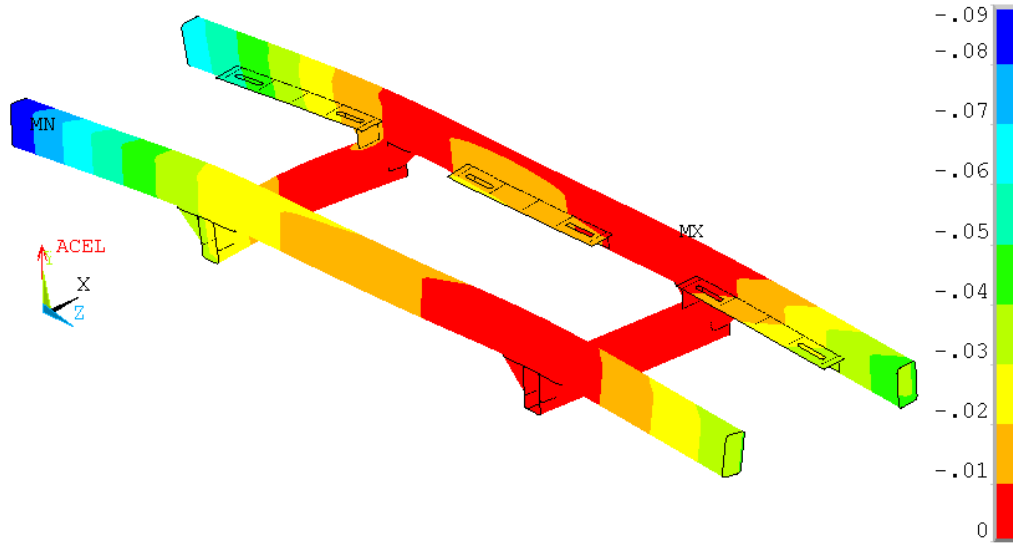
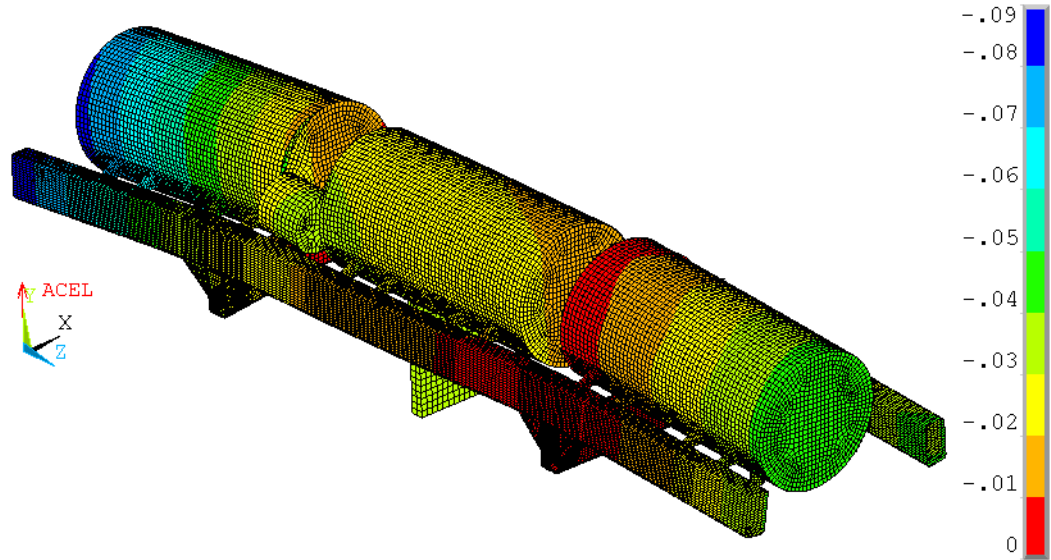


Designation	L, mm	Mass, kg
CCDTL.M1.700	3026,3	423
-01	3200,3	440
-02	3365,9	457
-03	3522,7	472
-04	3675,1	486
-05	3814,9	499
-06	3705	492



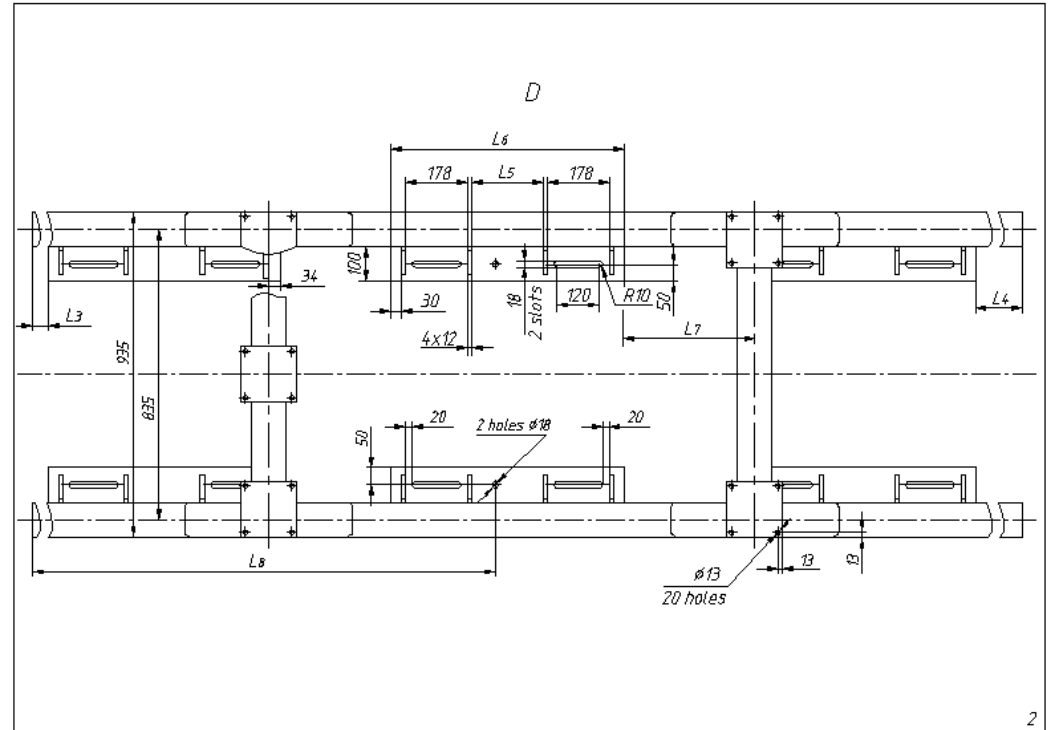
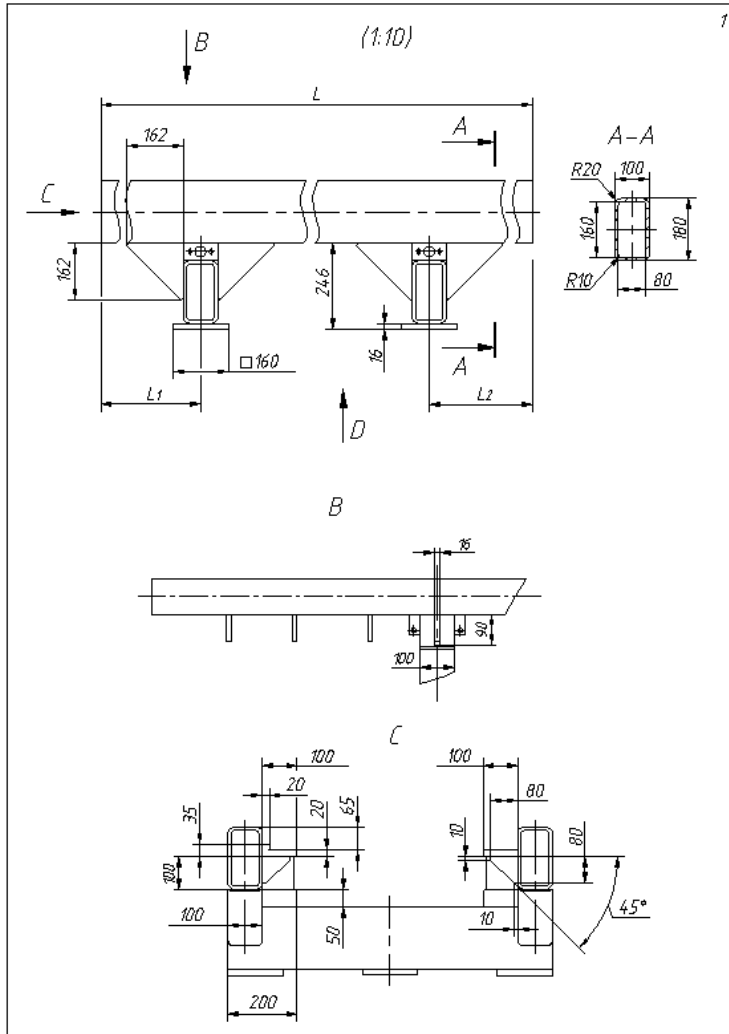
Calculation of Frame Deformation

Finite-element model of the frame with installed cavities



Frame displacements (mm) along Y axis

Frame Sizes



Dimensions

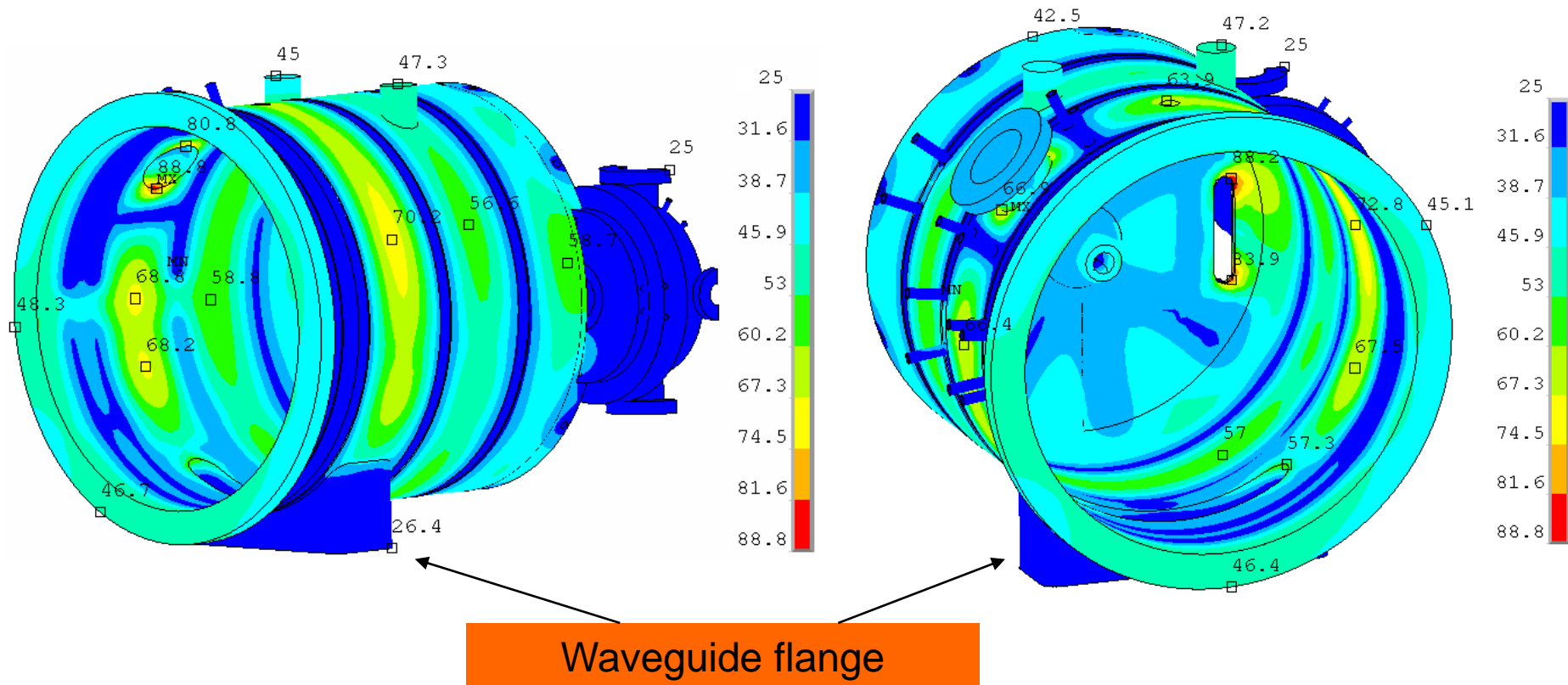
Designation	L , mm	L_1 , mm	L_2 , mm	L_3 , mm	L_4 , mm	L_5 , mm	L_6 , mm	L_7 , mm	L_8 , mm
CCDTL.M1.700	3020,3	687,6	932,7	59,7	304,6	206	670	365	1312,7
-01	3194,3	734,6	989,7	84,6	339,7	228	692	389	1394,1
-02	3359,9	781,5	1038,4	109,5	366,4	250	714	413	1472,5
-03	3516,7	824,7	1082	130,7	388	272	736	437	1545,7
-04	3669,1	867,6	1121,5	151,6	405,5	294	758	461	1618,6
-05	3808,9	902	1156,9	164	418,9	316	780	485	1687
-06	3699	945,3	933,7	185,3	173,7	338	802	509	1752,3



Thermal calculations of the cavities

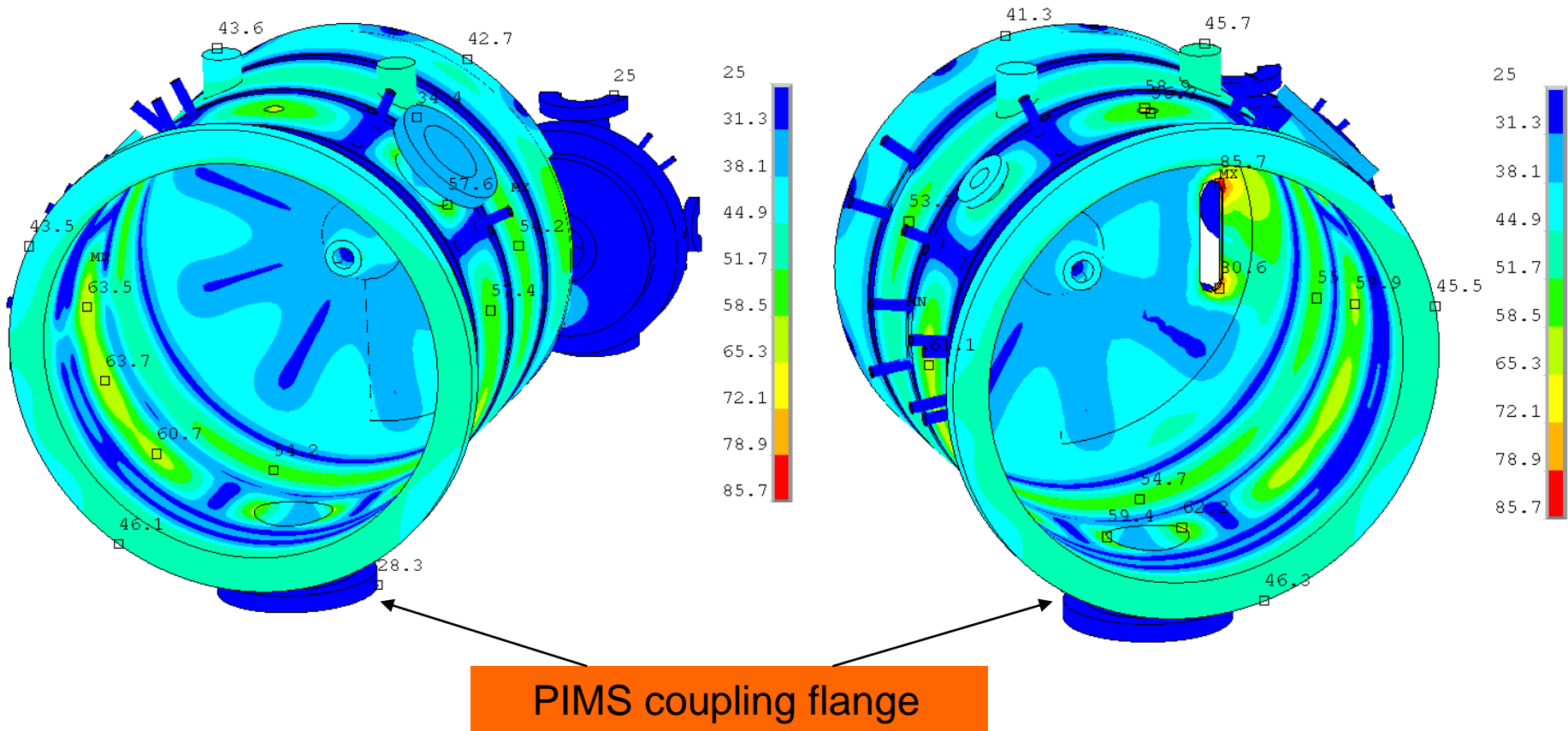
Tank 20 with waveguide flange , duty cycle 5%

Temperature fields (°C)



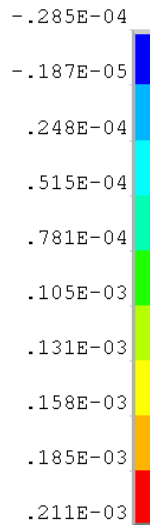
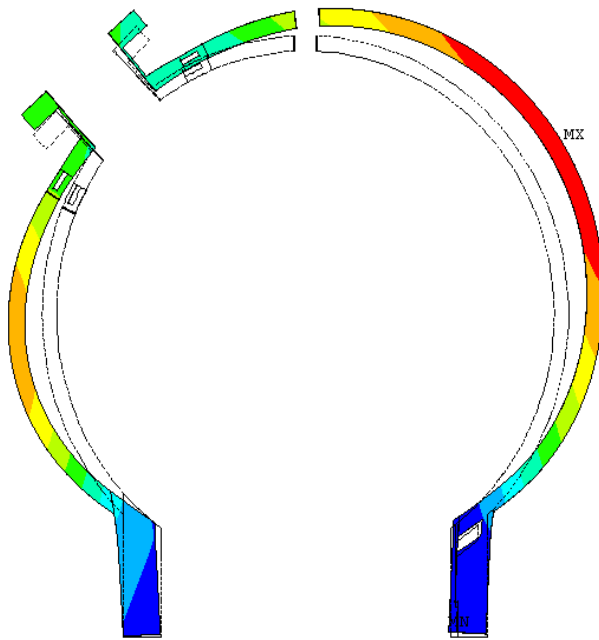
Tank 20, duty cycle 5%

Temperature fields (°C)

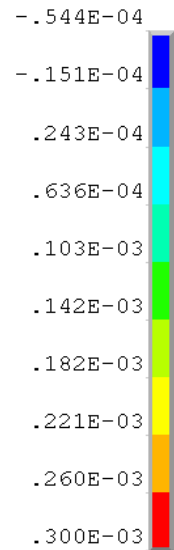
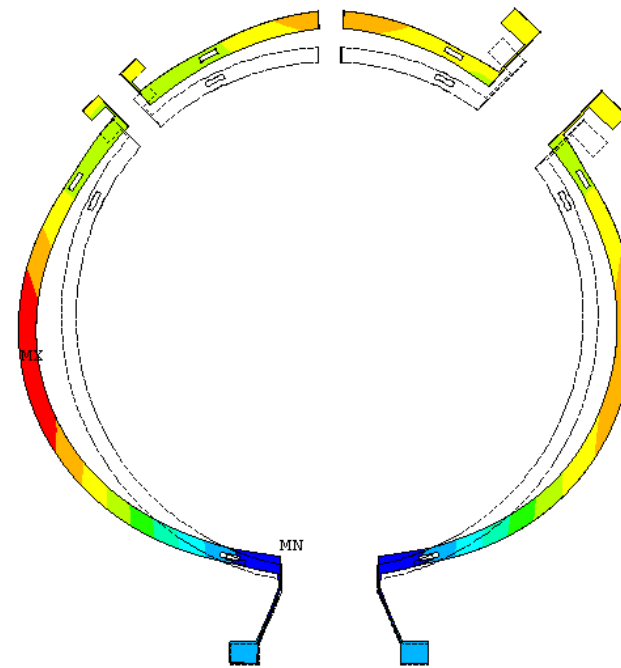


Tank 20, duty cycle 5%

Temperature drifts (m)



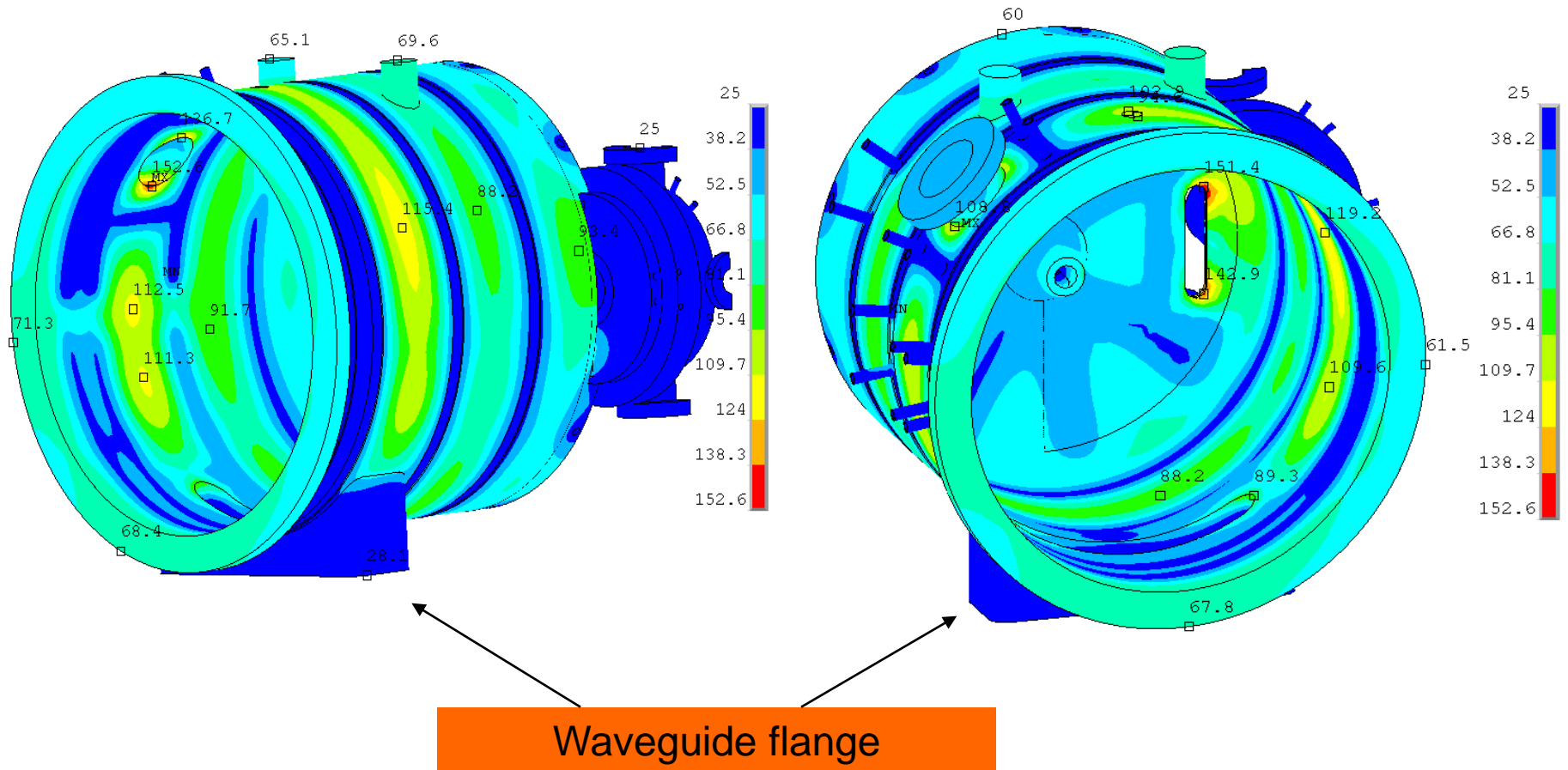
Waveguide flange



PIMS coupling flange

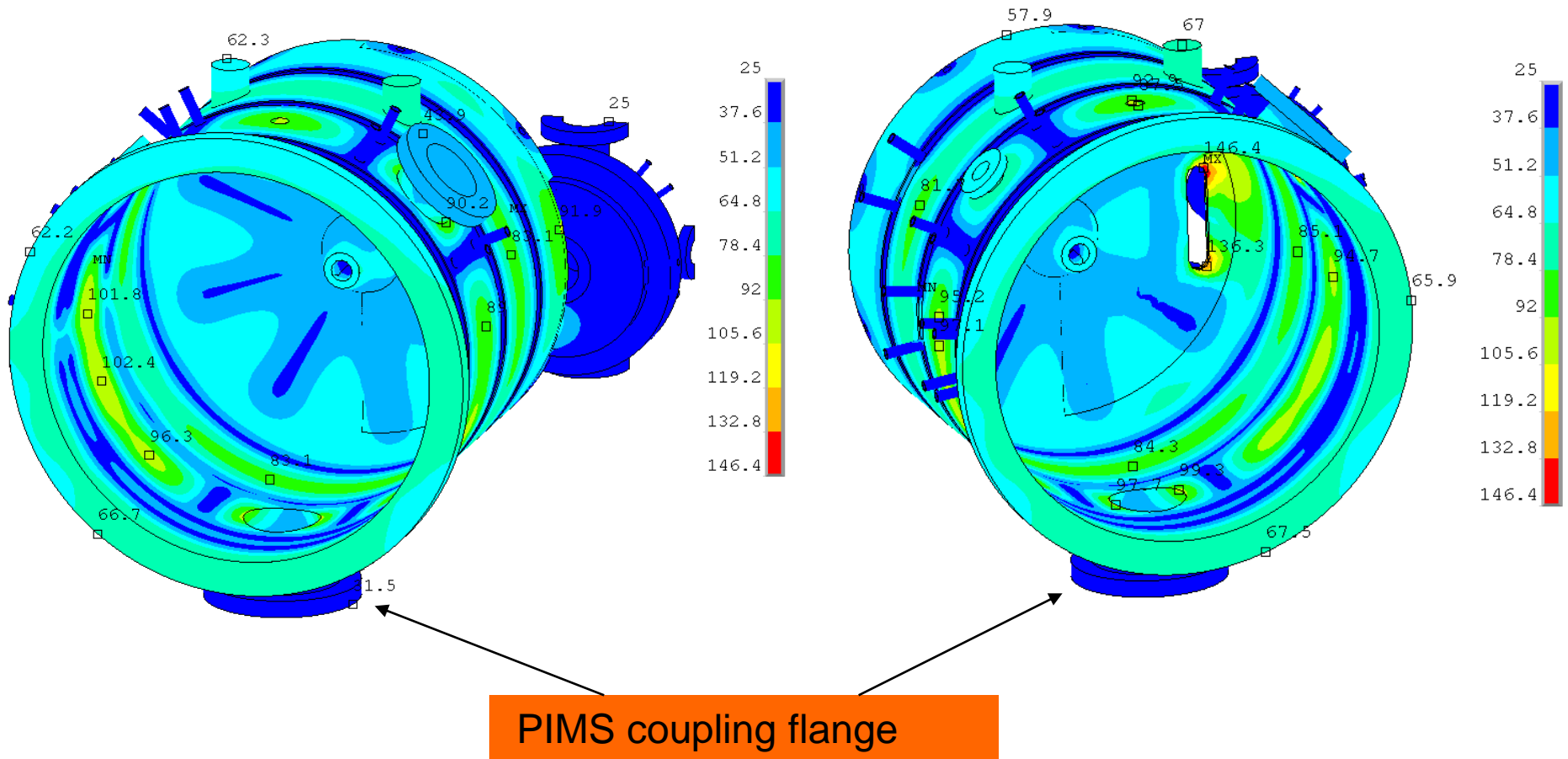
Tank 20, duty cycle 10%

Temperature fields (°C)



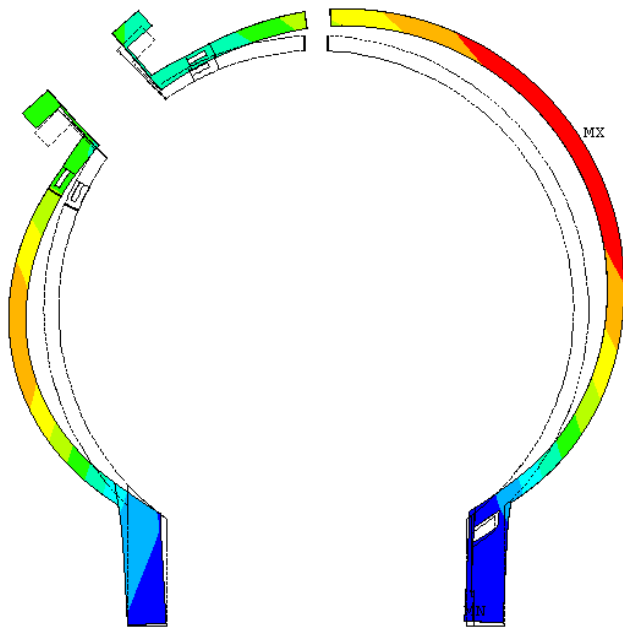
Tank 20, duty cycle 10%

Temperature fields (°C)

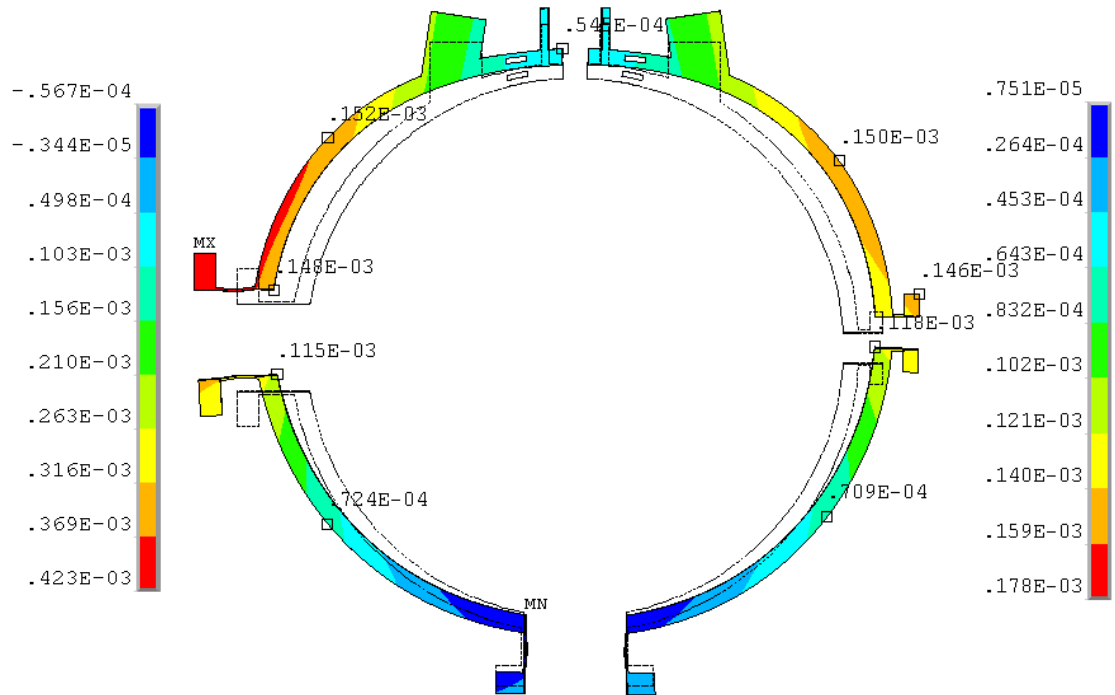


Tank 20, duty cycle 10%

Temperature drifts (m)



Waveguide flange



PIMS coupling flange