



# European Middleware Initiative (EMI)

<http://www.eu-emi.eu>

# Project Overview

- The European Middleware Initiative (EMI) project represents a close collaboration of the major European middleware providers - ARC, gLite, UNICORE and dCache - to establish a sustainable model to support, harmonise and evolve the grid middleware for deployment in EGI, PRACE and other distributed e-Infrastructures
- It's main objectives are to:
  - **Harmonize** the existing distributed computing middleware implementations by removing duplications and simplifying usage and maintenance
  - **Evolve** the middleware by addressing the requirements of the growing infrastructures as they become more stable and pervasive
  - **Support** users by implementing best-practice service-oriented procedures based on clear Service Level Agreements



07/06/2010



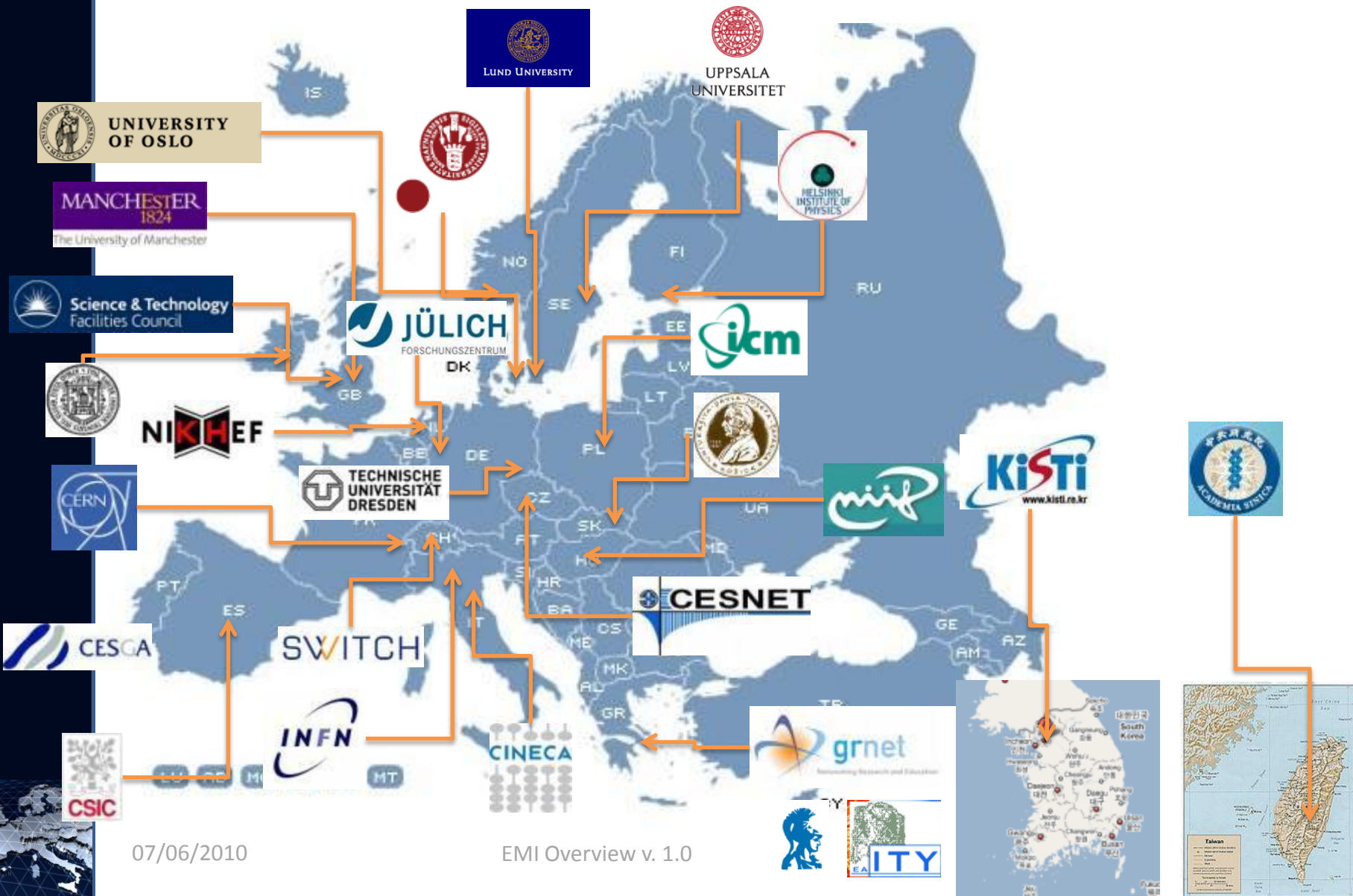
EMI Overview v. 1.0



# Technical Objectives

- **Usability:** improve the usability of the distributed computing middleware by simplifying its configuration, deployment, management and functionality
- **Security:** harmonize security management across implementation and integrate new user-friendly security methods to hide the complexity of certificates handling
- **Standardization:** implement relevant and usable community standards and drive the definition and adoption of new required specifications
- **Interoperability:** enhance the interoperability between HTC middleware implementations, between HTC and HPC computing models and between different, geographically distributed infrastructures
- **Innovation:** evolve and innovate the middleware as needed to satisfy the requirements of the user communities, integrating emerging technologies as virtualization and cloud computing in the existing stable and secure distributed computing services
- **Commercial relationships:** increase the use of commercial software in the distributed computing middleware, decrease maintenance costs and improve the adoption and support by commercial companies

# Partners (26)



EMI INFO-RI-261611



# Collaborations

