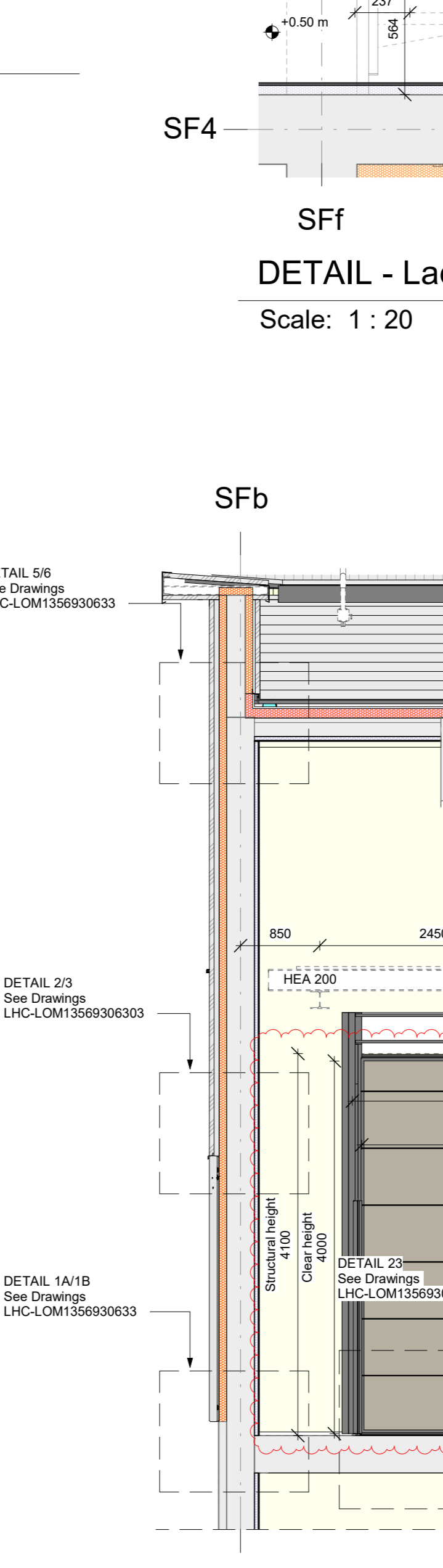
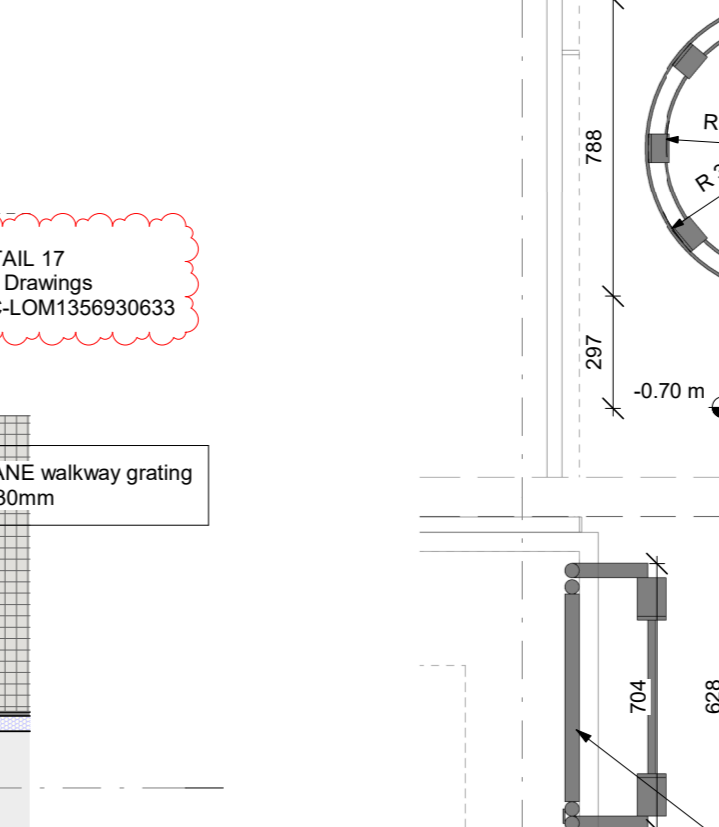
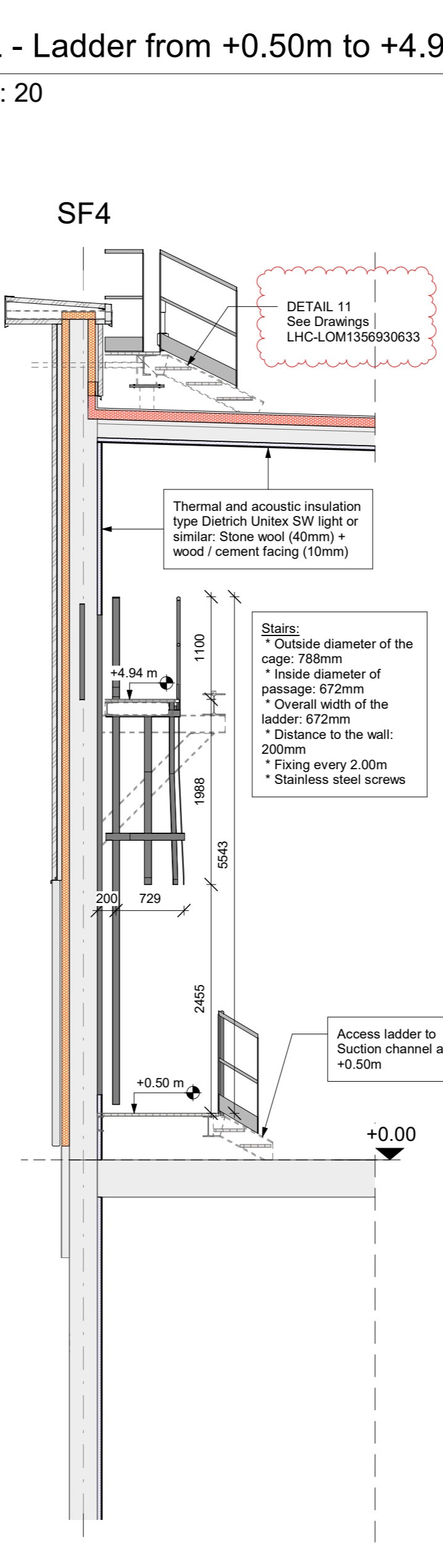
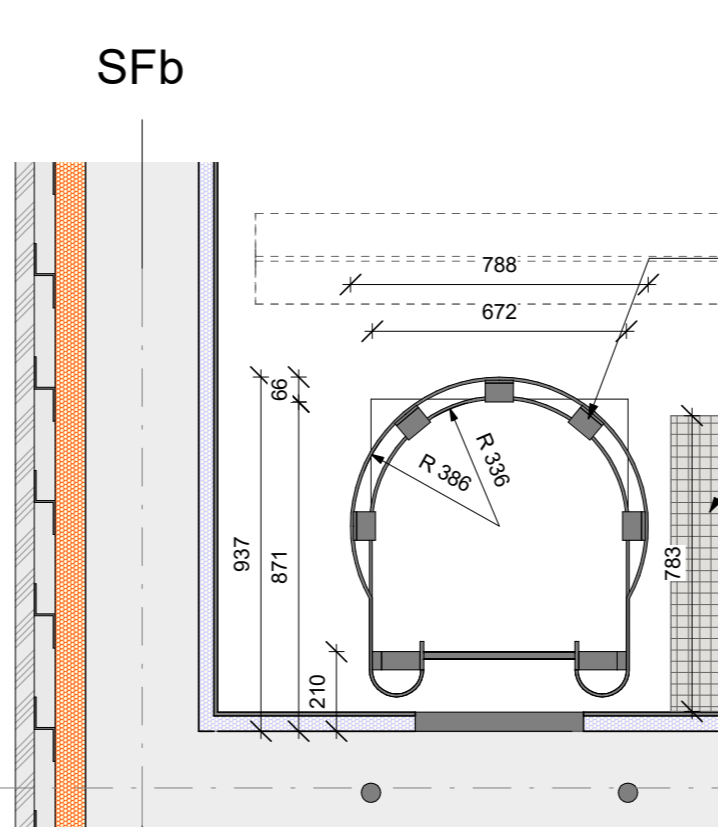
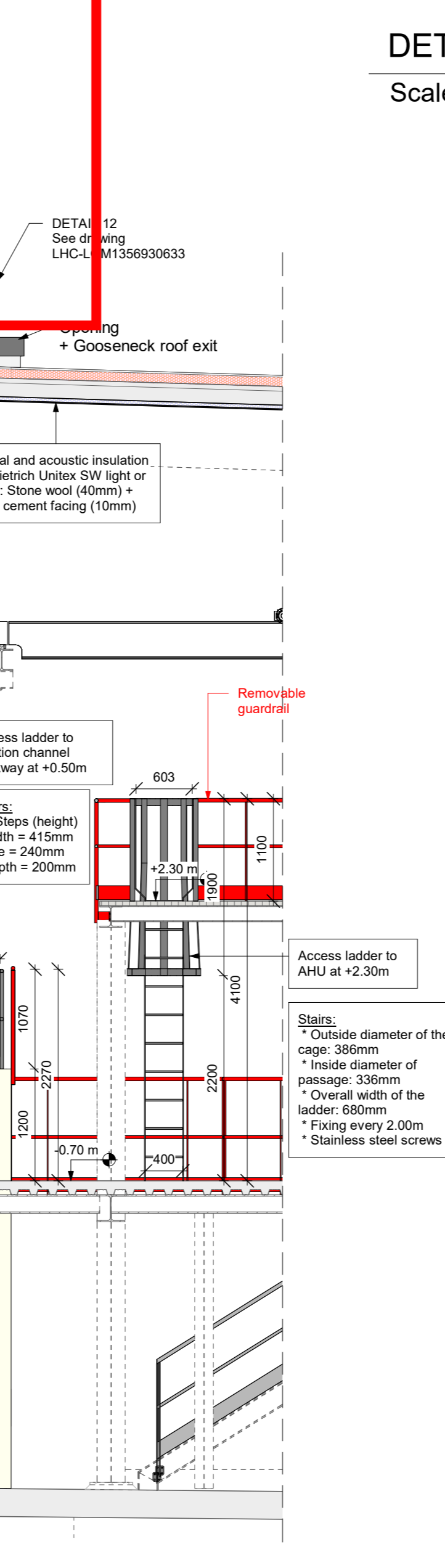
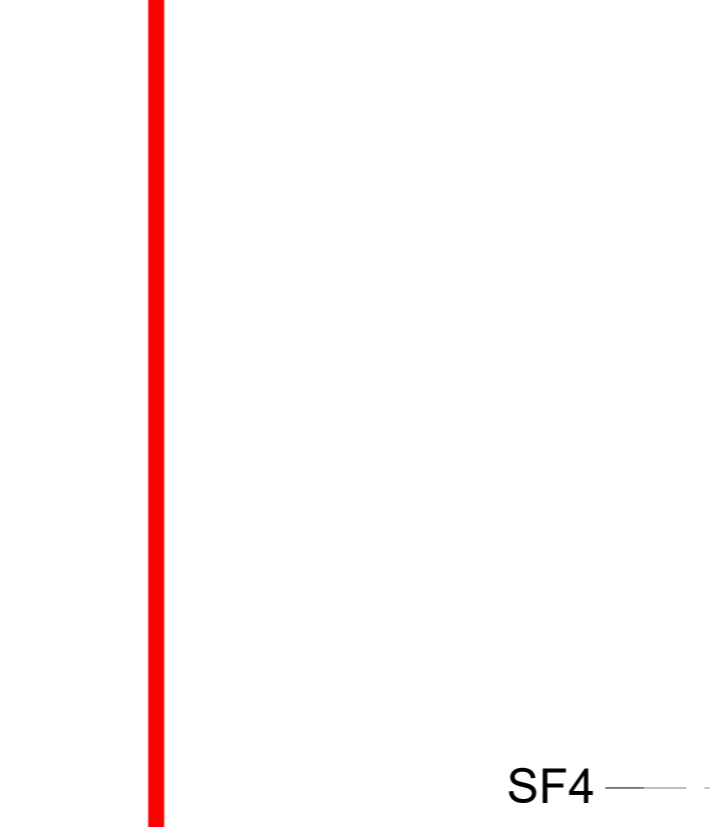
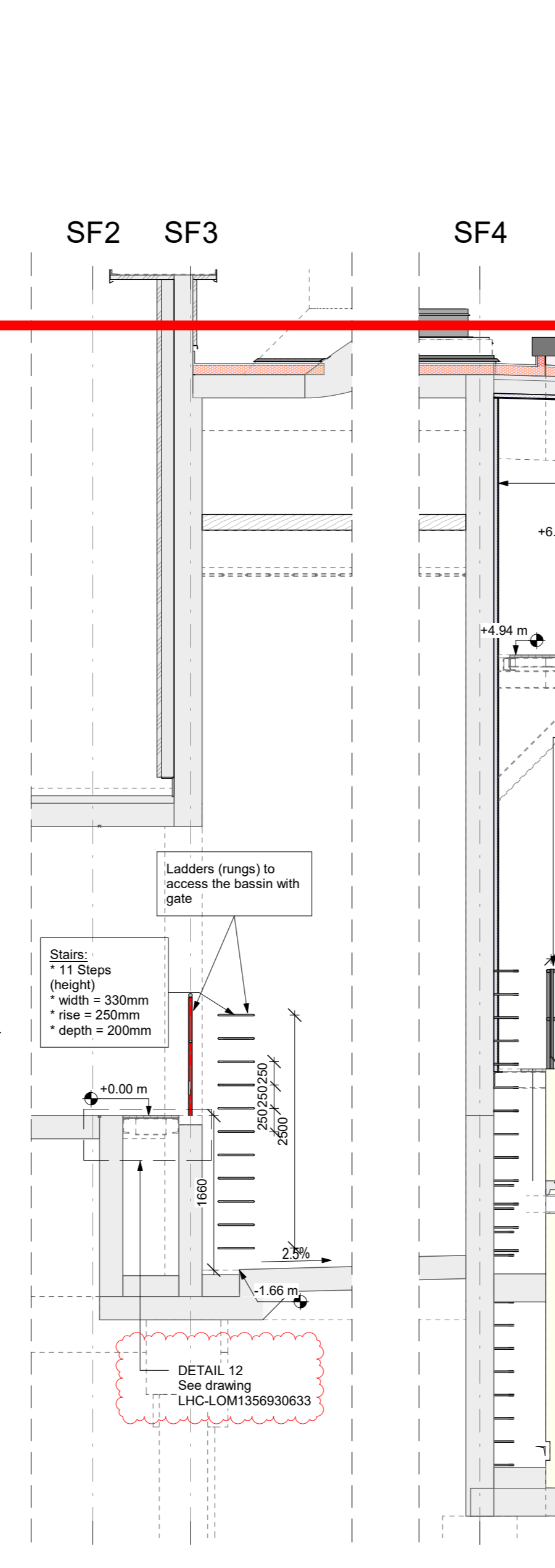
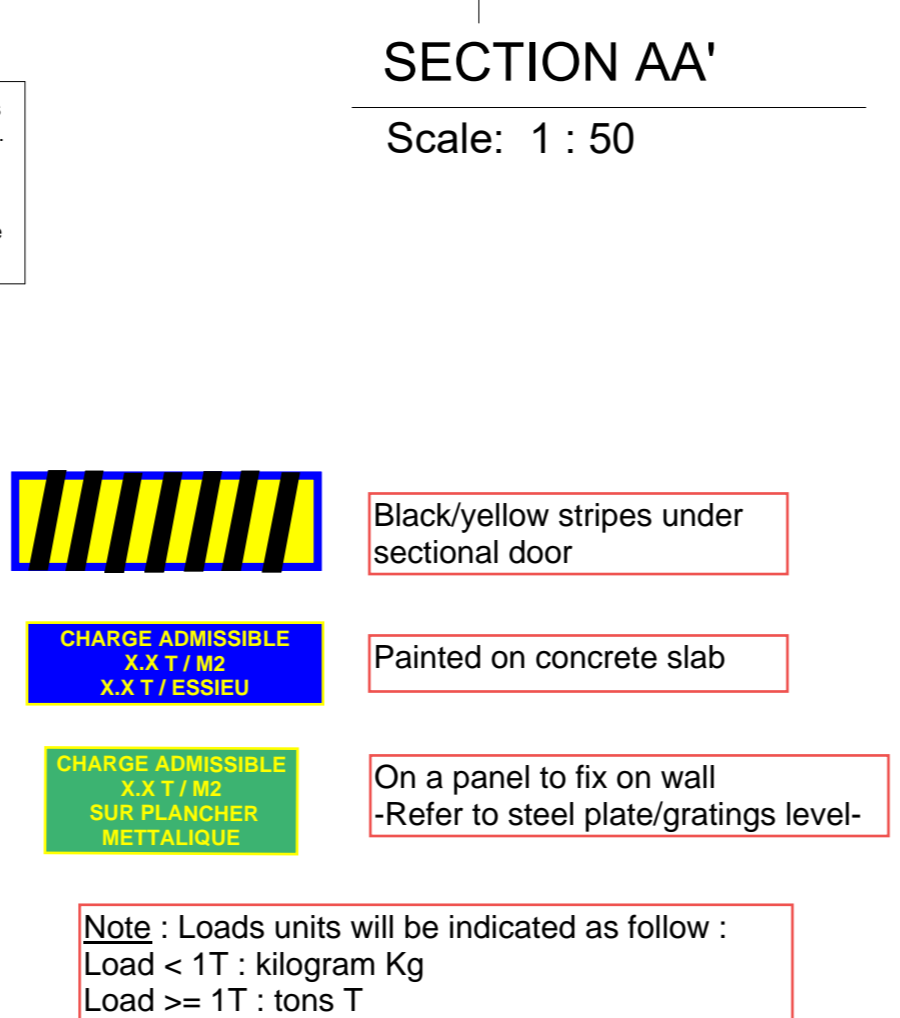
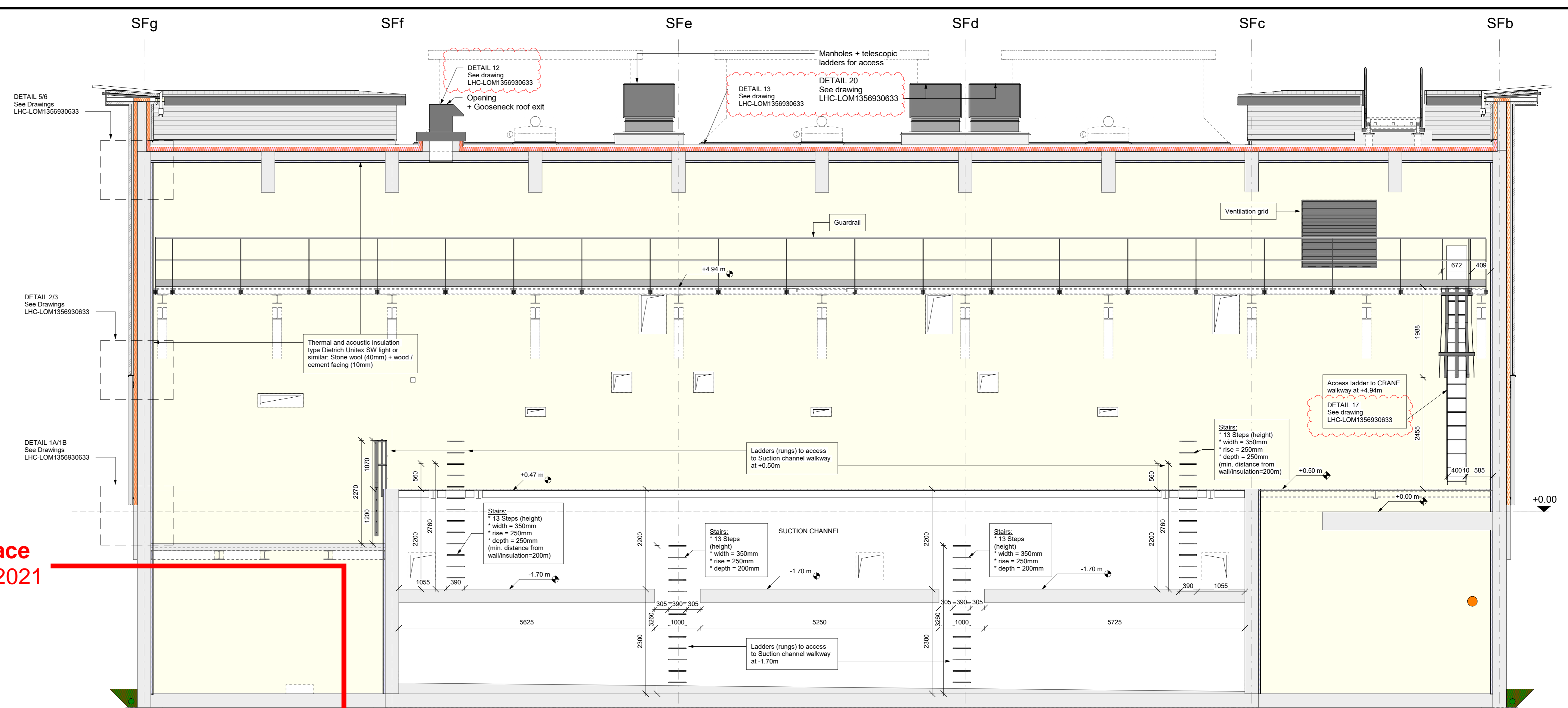
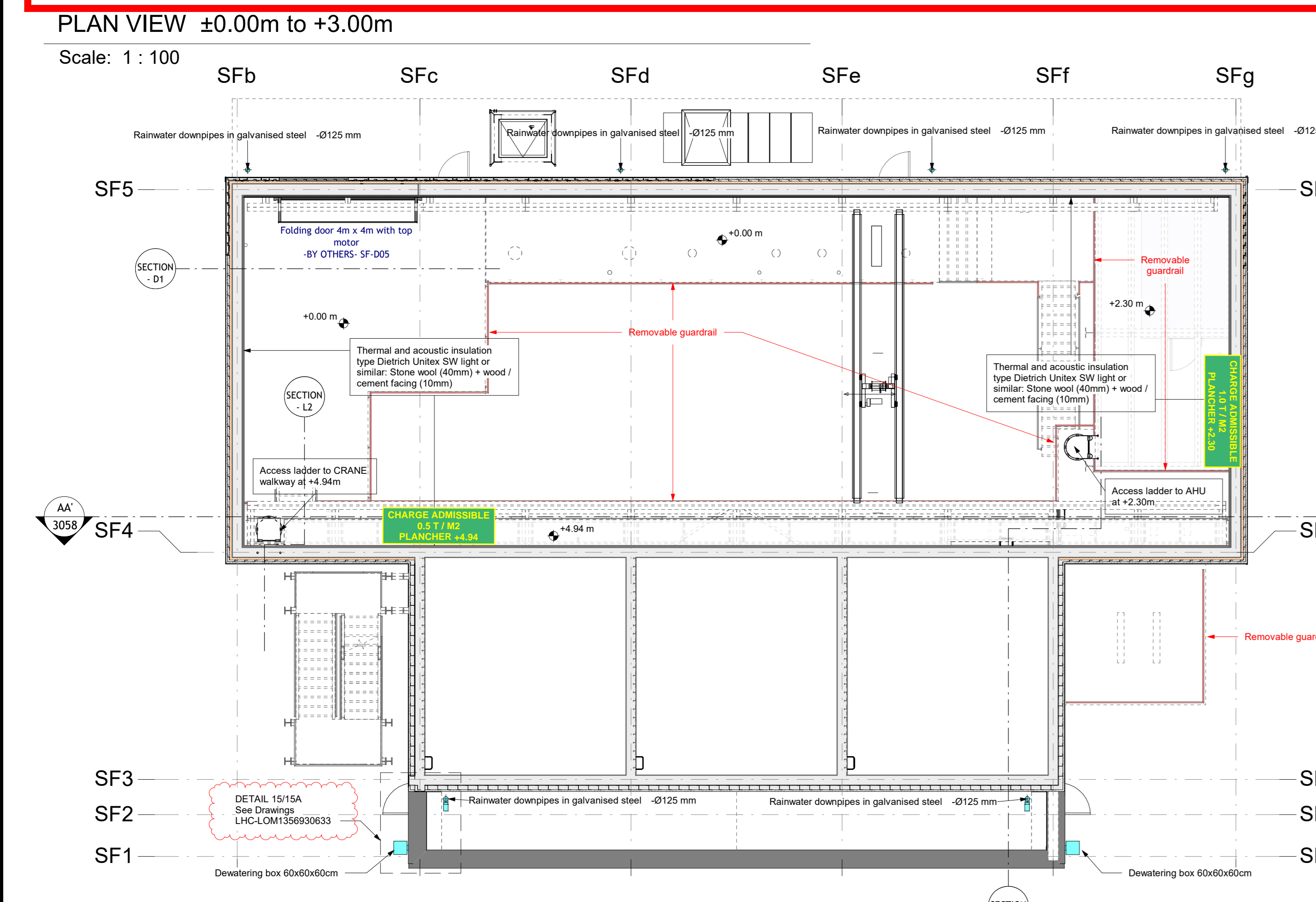
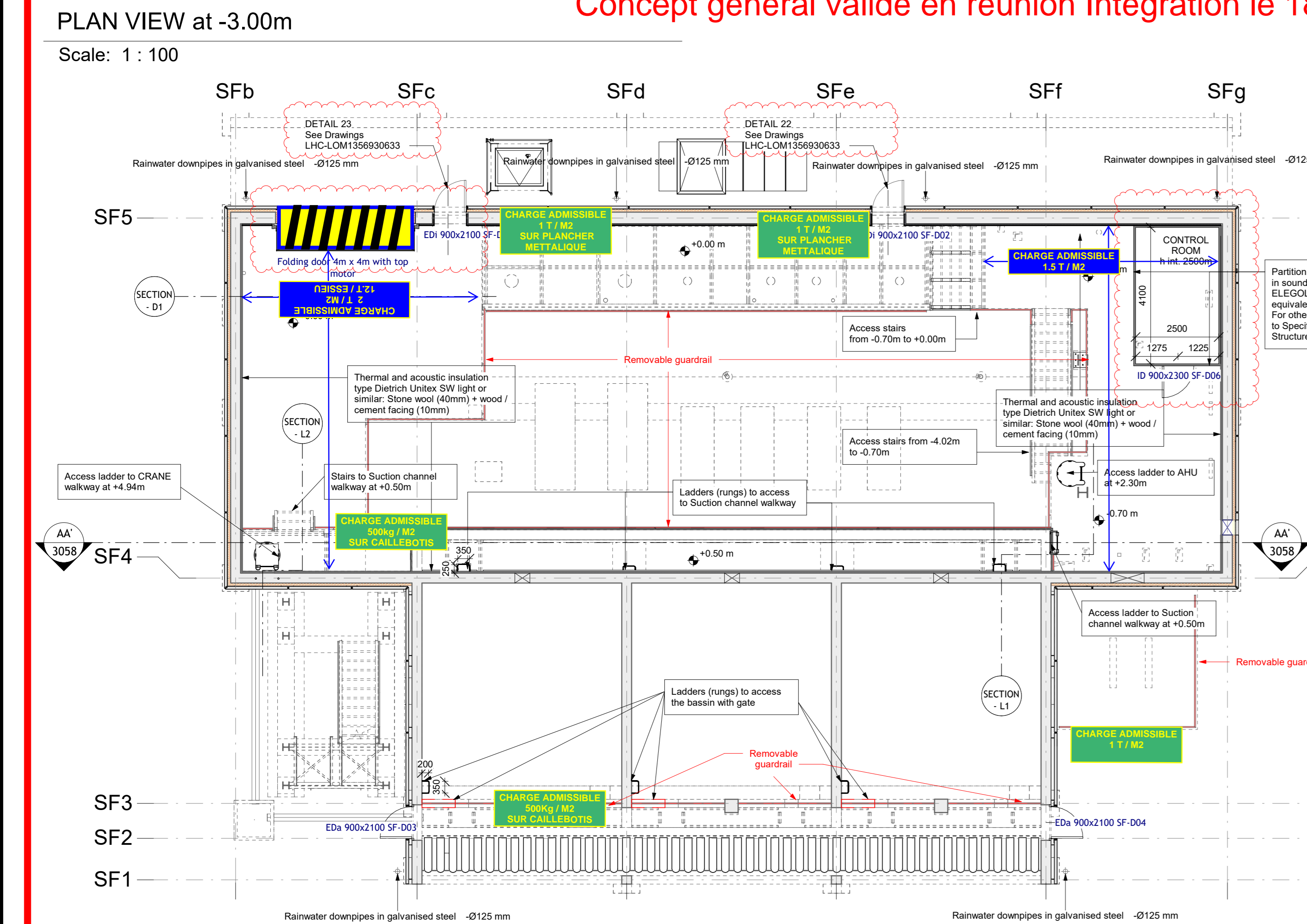


Marquage des charges dans les bâtiments de surface
 Concept général validé en réunion Intégration le 18/01/2021



LEGEND	
MATERIALS	DESIGN ASSUMPTIONS
<ul style="list-style-type: none"> Thermal and acoustic insulation type Dietrich Uniflex SW light or similar: Stone wool (40mm) + wood / cement facing (10mm) Metallic partition 60mm: rockwool between 2 rolled brushed sheet Thermal insulation 80mm type Stone wool Rockbarge between horizontal supports Thermal Stone wool insulation 120mm and Waterproof bituminous membrane Cladding 43mm - Arval frequency 5.43 - Galvanized and coated (RAL 9006 or 9007) 	<ul style="list-style-type: none"> Eurocodes standards Bearings and soil: geotechnical interpretative report Live loads: see design methodology report Wind: zone 1 - site III b Snow: zone C2 Seism: zone 3 - cat II - soil class C Fire: no resistance excepted specific indications
MATERIAL PROPERTIES	NOTES
<ul style="list-style-type: none"> CONCRETE (According to NF EN206-1) PRE-CAST PANELS <ul style="list-style-type: none"> -Concrete grade: C35/45 -Concrete classification: C4 -Exposure class: XC4 XF3 REINFORCEMENT <ul style="list-style-type: none"> -Steel grade: B500 -Yield Strength: 500 MPa 	<ul style="list-style-type: none"> Levels are referenced from Cern Coordinate System (CCS) Level ±0.00=508.21 CCS All dimensions in millimetres, all levels in metres
REFERENCES	OTHER INFORMATION
<ul style="list-style-type: none"> LHC35690001_H_SF57_2017/01/18_CERN SMR23_CERN Drawings (VERSION 08/11/2018) 	<ul style="list-style-type: none"> Type of doors - Access control: <ul style="list-style-type: none"> (ACT) Full access control (with badge reader) (ACC) Access control (without badge reader) (ACS) Supervised (via dry contact) Doors equipments: <ul style="list-style-type: none"> -ID: Interior Door assembly isolated metal with door closer, panic bolt and occlus -IDA: Interior Door assembly acoustic isolated metal with panic bolt and occlus -EDI: Exterior Door assembly isolated metal with door closer, panic bolt and occlus -EDA: Exterior Door assembly acoustic isolated metal with panic bolt and occlus -ID: Interior Door assembly metal with occlus Ladders: all ladders are compliant with ISO 14122

Key plan
 Legend: Location

ISSUED FOR CONSTRUCTION

Date	Drawn by	Checked by	Approved by	Notes
15/09/20	AL	CE	AL	ISSUED FOR CONSTRUCTION
16/12/19	AL	CE	AL	ISSUED FOR CONSTRUCTION
23/09/19	AL	CE	AL	PLAN CREATION

EUROPEAN ORGANIZATION FOR NUCLEAR RESEARCH
 European Laboratory for Particle Physics

HL - LHC - POINT5 : SURFACE

K3569 / SF57 - Cooling Towers
 MISCELLANEOUS
 PLAN, SECTIONS AND DETAILS

H / Building work (finishing)

CONSTRUCTION DESIGN

Lombardi **ARTELIA** **PINI SWISS**

Scale: As indicated

OFFICIAL DRAWING LHC-LOM13569305810C