

Joint COMPASS and COMPASS++/AMBER TB

19 January 2021

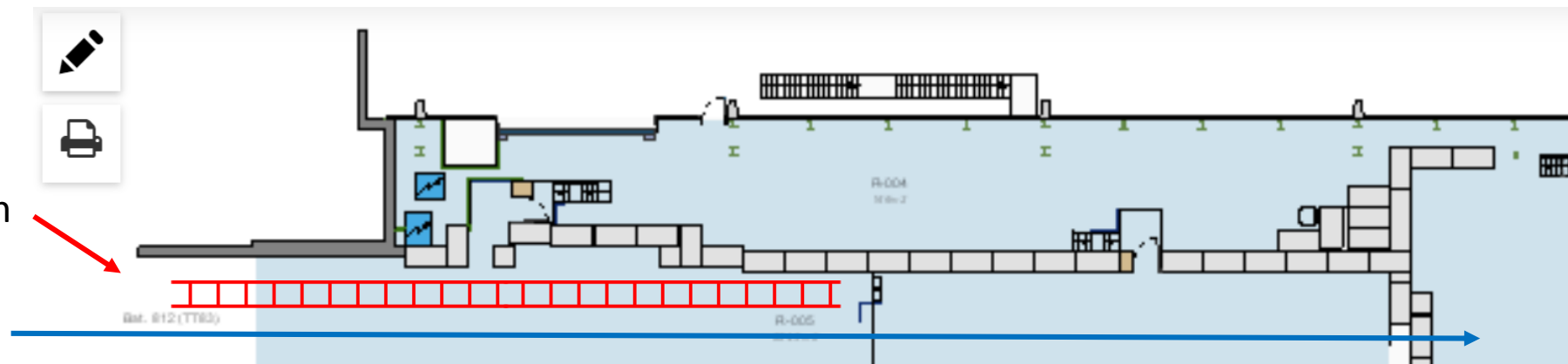
IKAR TPC installation

Stefano Levorato

Few visits to define the M2 beamline intervention and to identify the positioning of the required services
 (J. Bernhard → Dipanwita, + EN-CV, EN-EA-AS)

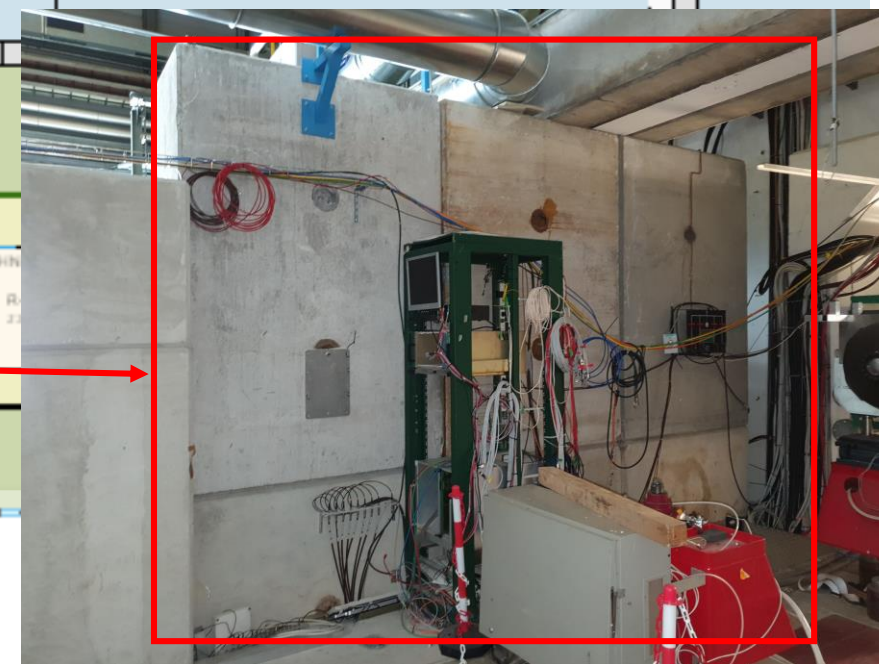
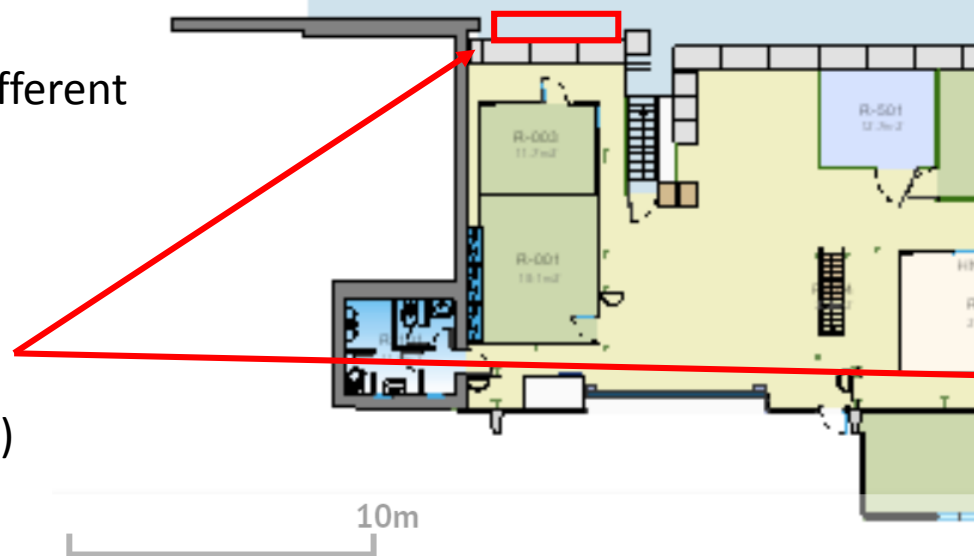
Rail system installation

- Magnet failure moving out
- Faster Changeover between setups



Service installation for the different setups

- Fibers
- Power distribution
- Gas distribution (Helium, Nitrogen, Hydrogen, Argon)



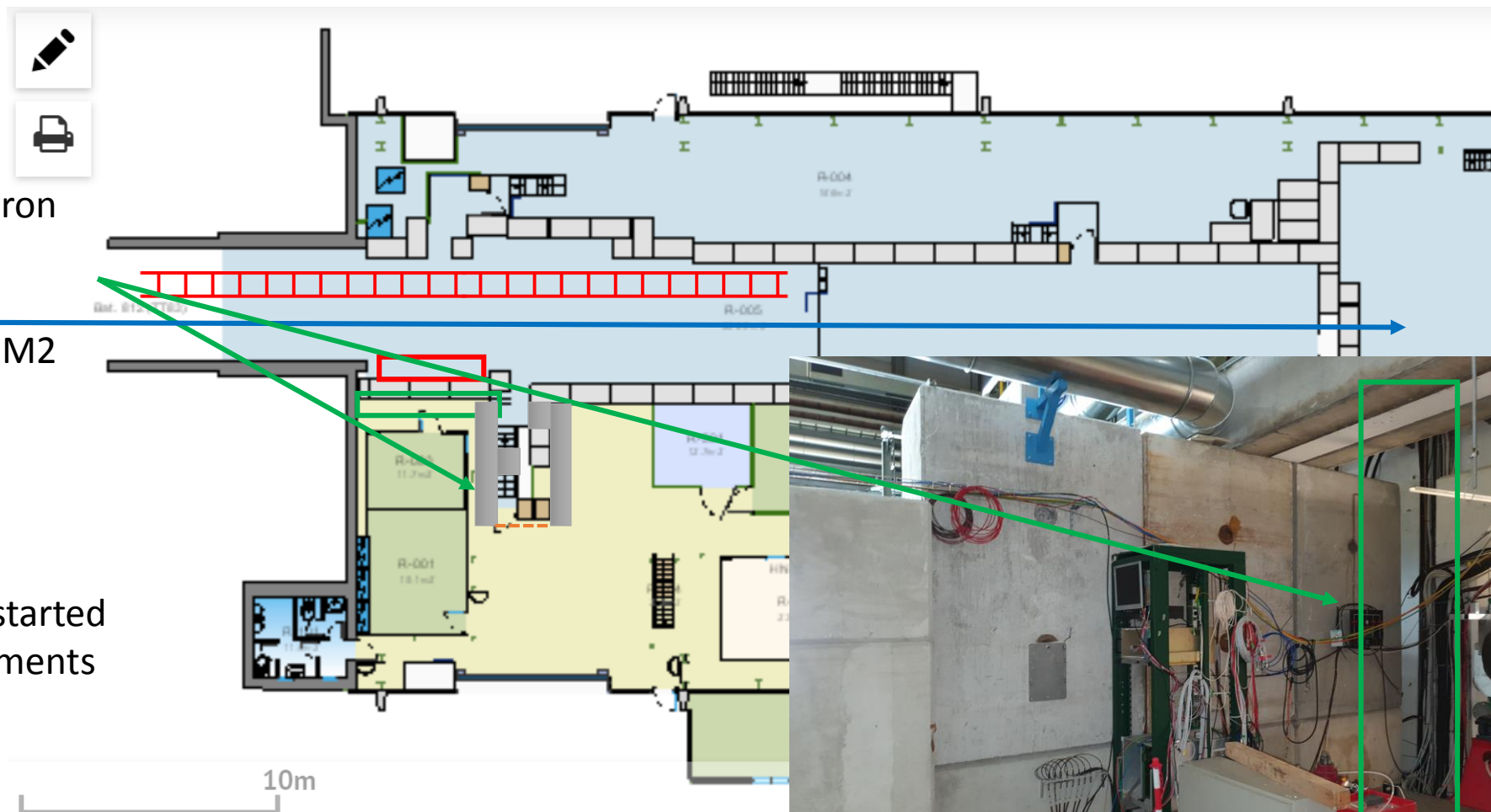
Few visits to define the M2 beamline intervention and to identify the positioning of the required services
(J. Bernhard → Dipanwita, + EN-CV, EN-EA-AS)

Shielding modification due to radiation limits for DY
- Doubling of concrete wall or Iron
Shielding will be put in place

- Modification of the access to M2
beamline: chicane

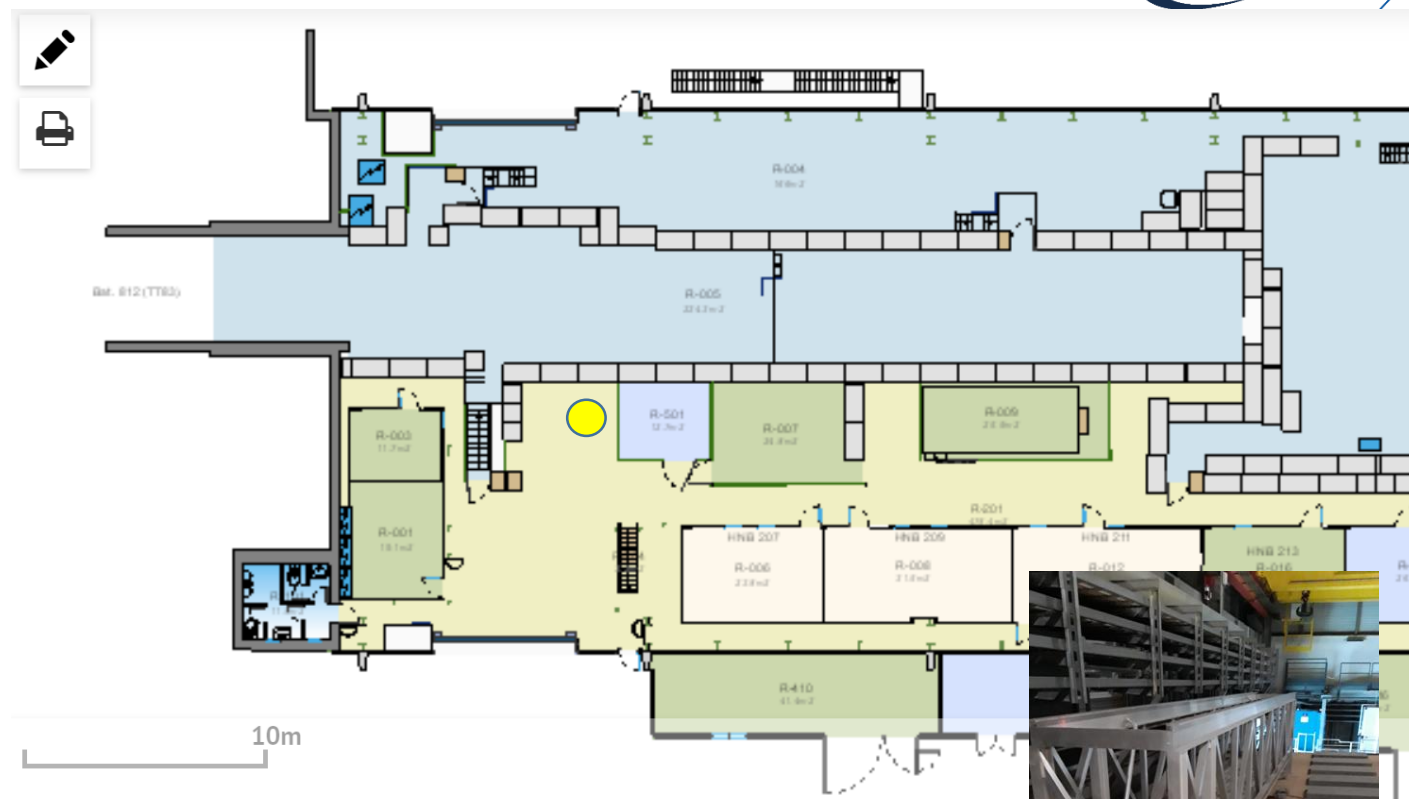
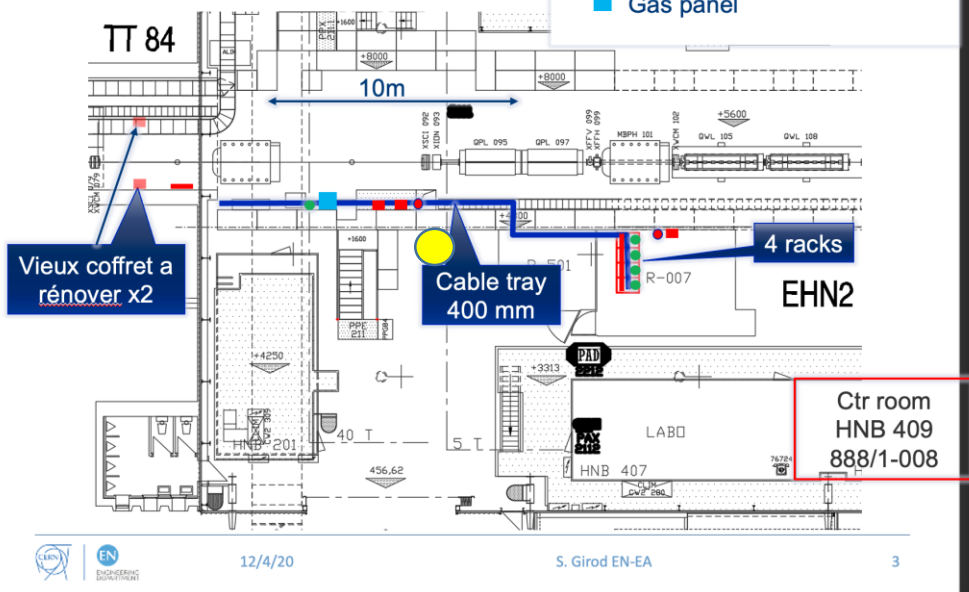
Radiation background studies started
to define the shielding requirements

Concrete / Iron shielding



Services b.888 EHN2

- reglettes (10x 6A)
- coffrets 1x 16A + 4x 10A
- Prise 1x 32A
- 2 outlets Ethernet (=1 socket)
- Gas panel



TPC → services only in beam position or outside (helium gas only) yellow mark position to allow for test till beam time is allocated ?