

PT status and planning

Michael Pešek
Charles University, Prague

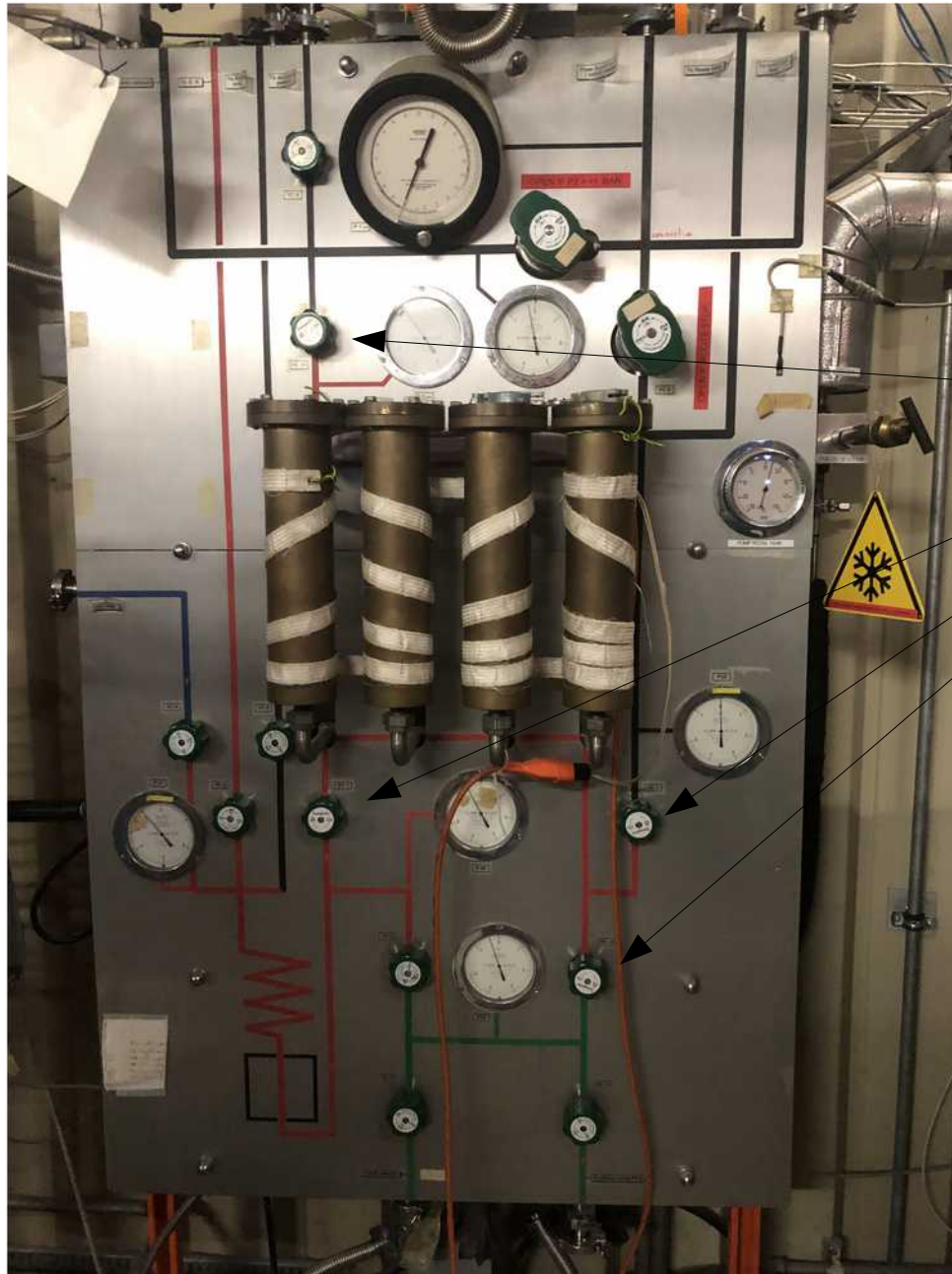
Outline

- Activities since last TB
- Shopping list
- Planning
- Manpower

Activities since last TB

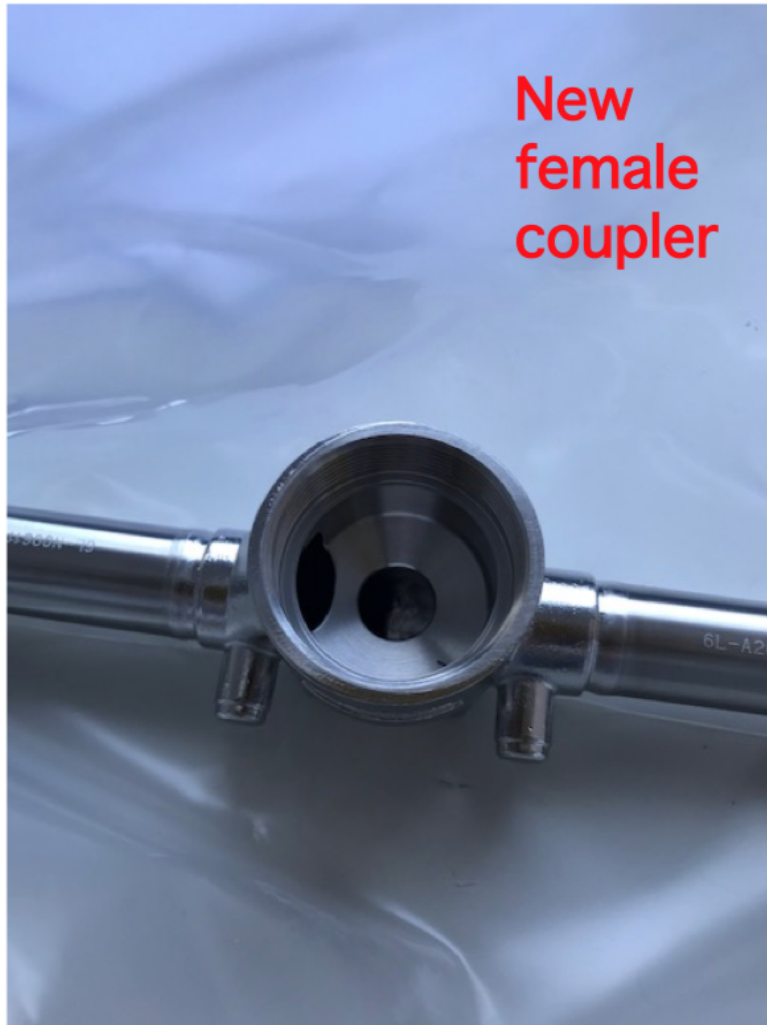
- Target loading platform put in place 1/2
- Exchange 4 valves on ^3He panel 5/2
- Exchange N_2 turret o-rings 15/2
- Restart diffusion pump 17/2
- 2 EIOs sent to CPI: 1 irreparable, 1 to be repaired
- Reinstall ^3He safety valves (safety inspection)
- Reconnect ^3He line
- Leak check isolation vacuum
- Leak check ^3He circuit
- Leak check ^4He circuit

3He gas panel

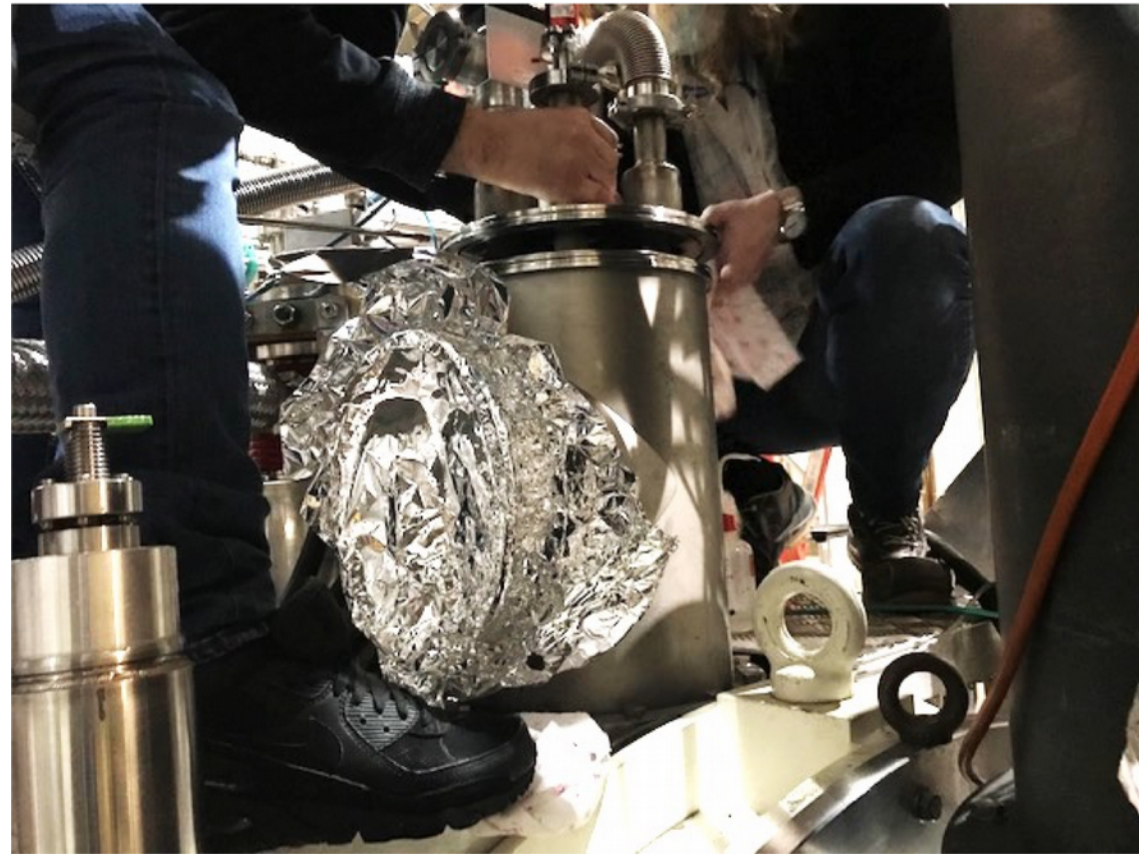


Replaced

3He valves



Magnet o-ring exchange



23/03/2021

Target holder



23/03/2021

Upcoming/In progress

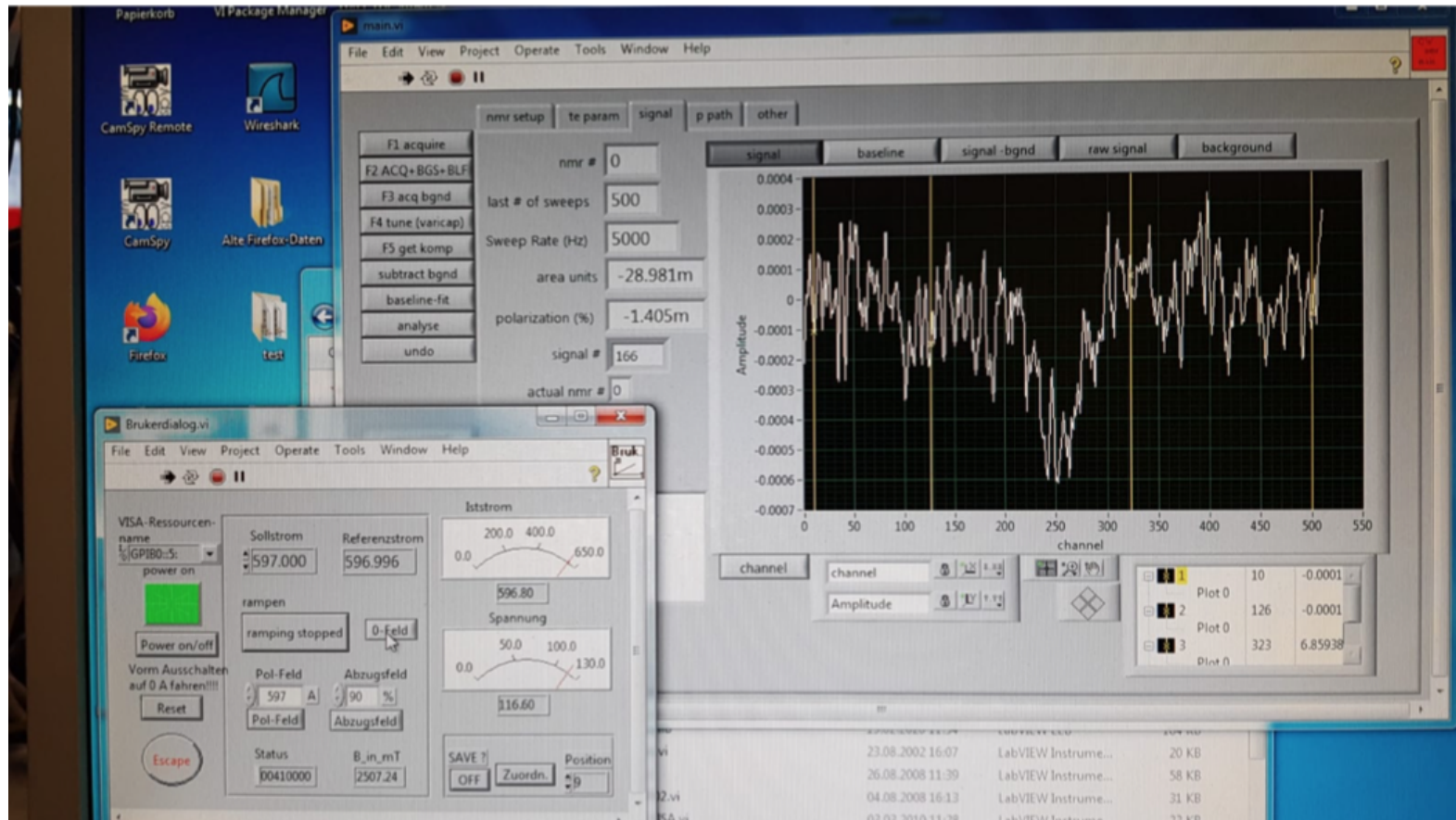
- Purging of ^3He pumps by N_2 gas circulation
- LN_2 trap preparation
- Start circulation in ^3He circuit with He gas
- Install LN_2 pre-cooling circuit
- Magnet purging and leak-check
- ^4He rotary pump repair
- Gunn diode setup installation

Shopping list

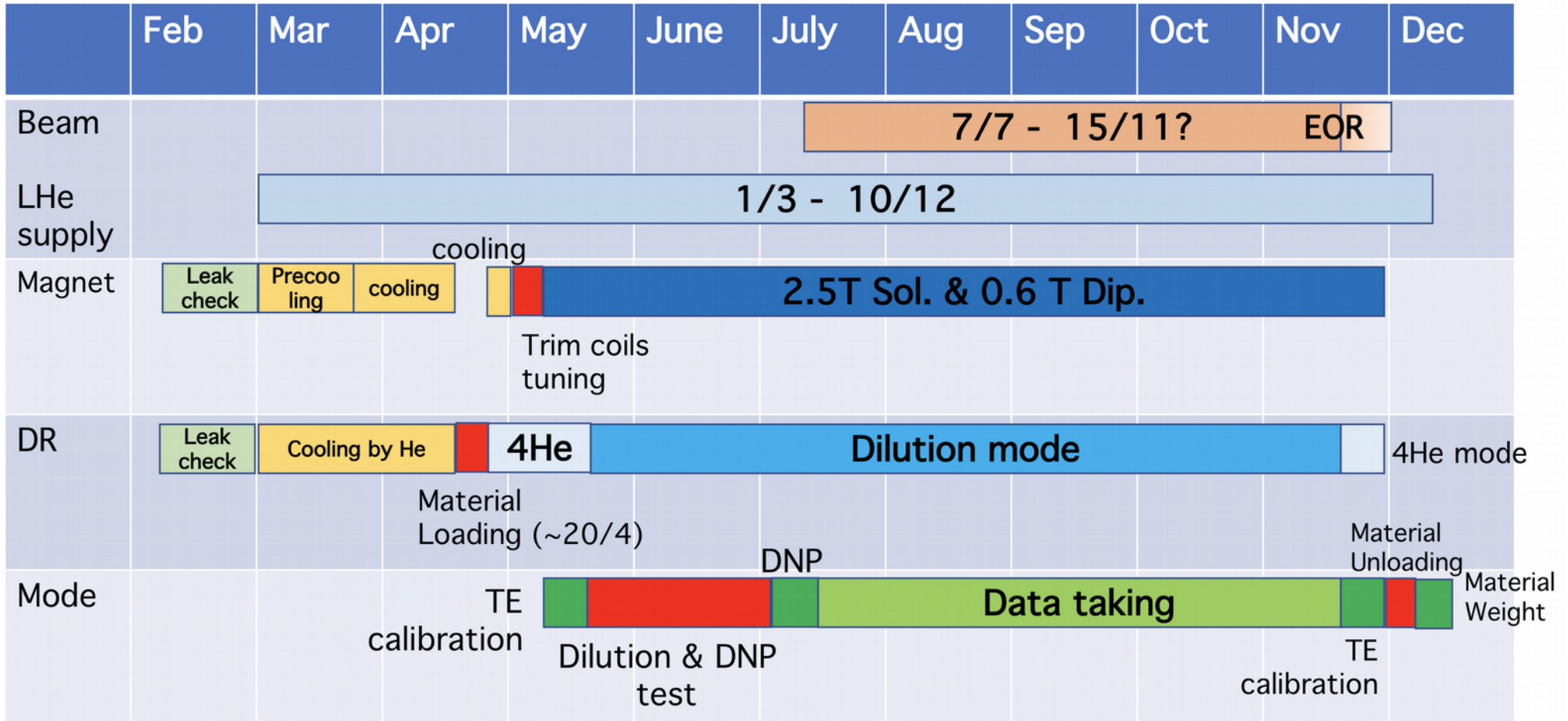
- 2 additional Gunn diode sets to be ordered (Yamagata)
- 3 spare Q-meters (1 already tested)
- Repair of EIO (Prague)
- MW elements – waveguides, directional couplers, amplitude detector (Prague)
- 250x5 mm o-rings (2 to be returned to Cryolab)
- Vacuum gauge, few vacuum elements
- PC USB-GPIB
- Indium wire
- ...

Q-meter test (Gerhard R.)

- ${}^6\text{LiD}$ TE signal at 77 K



Planning



Slight delay, LHe expected 29/3, loading delayed ~1 week

Manpower

	J	F	M	A	M	J	J	A	S	O	N	D	
Jaakko					■	■	■	■					■
Gerhard R					■		■	■					■
Kaori					■								■
Michael P	■	■	■	■	■	■	■	■	■	■	■	■	■
Takahiro					■	■	■						
Miura								■	■				
Stefan R					■	■							
Christophe	■	■	■	■	■	■	■	■	■	■	■	■	■
Nori	■	■	■	■	■	■	■	■	■	■	■	■	■

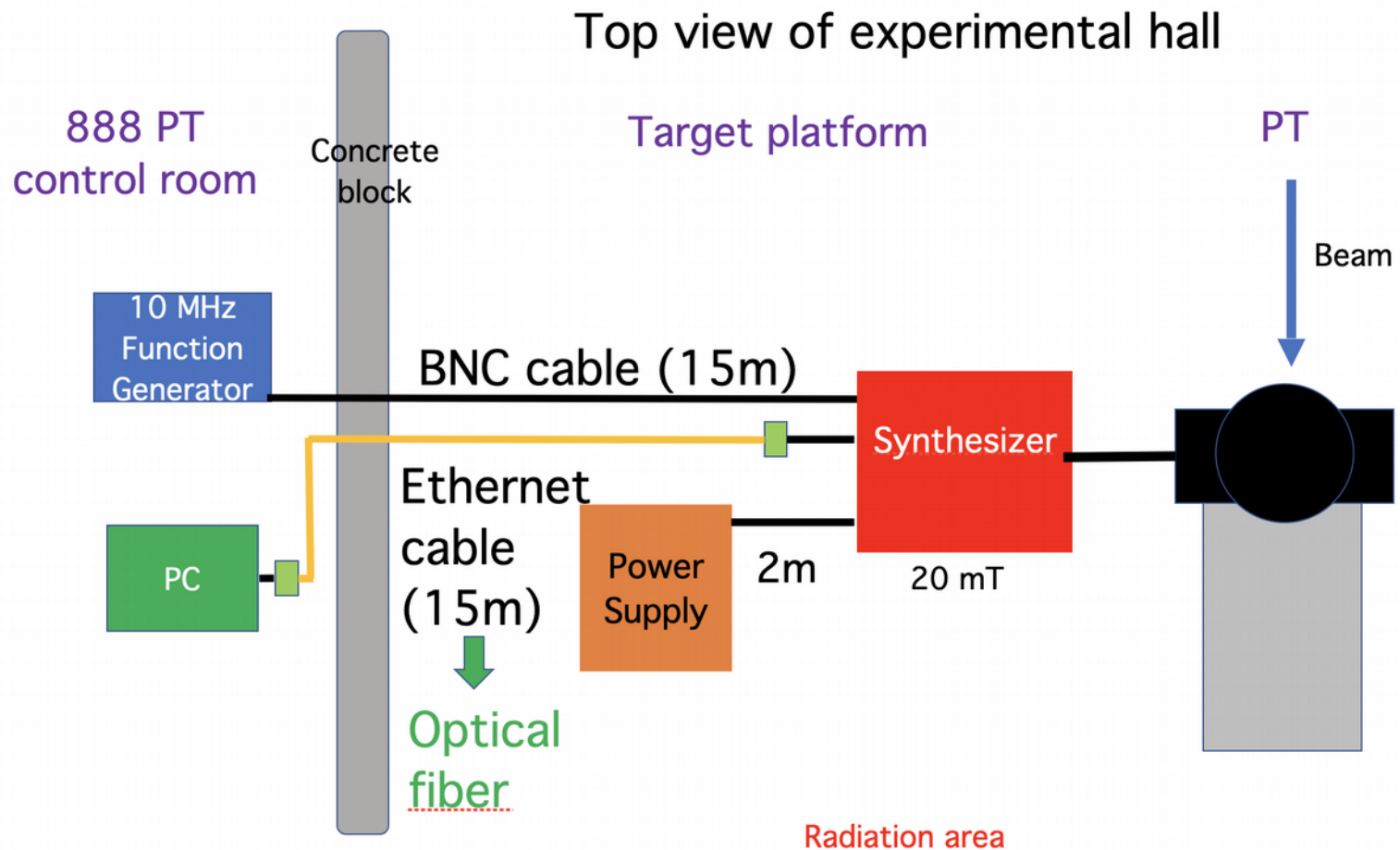
■ Official request needed

Under discussion: Tino Vacca (Cryolab) for loading

Spare

Gunn diode installation

- New support table needed (about 1 m from DR)
- New air blower to be installed (cooling)
- Long wave guides needed



Safety region for field rotation

MSS for field rotation

