



8th-Jan, Post christmas

l.millward@qmul.ac.uk

FCNN Inference

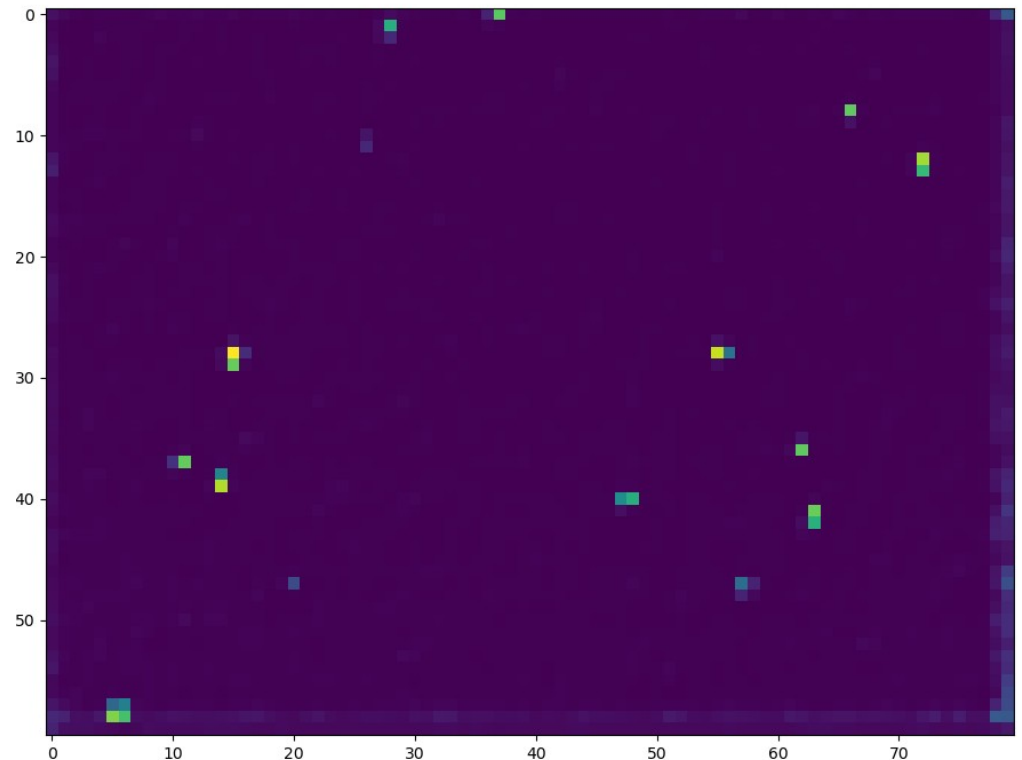
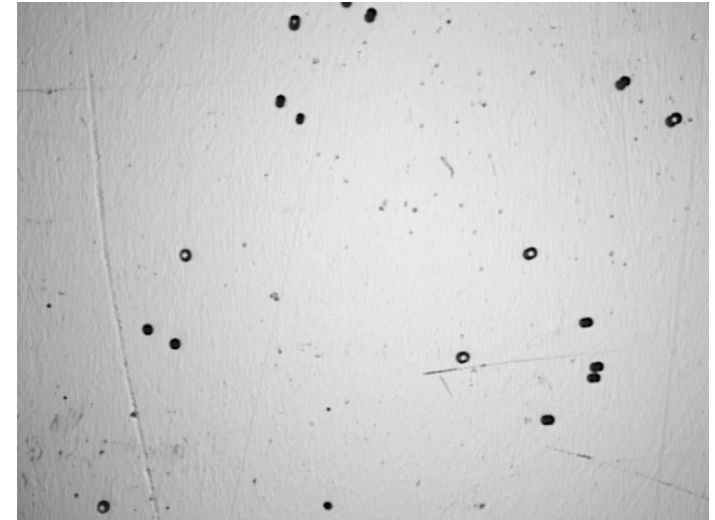
- Changes to ordering of maxpool layers - preserve greater spatial resolution in final FCNN / heatmap
- 60x80 Heatmap ~ 1 pix ~ 1pit
- Pixel intensity corresponds to confidence

[0,0.01] range ~ most bkg

[0.01,0.1] may pick up features present in the exposed multi-channel images, but not in the unexposed foils

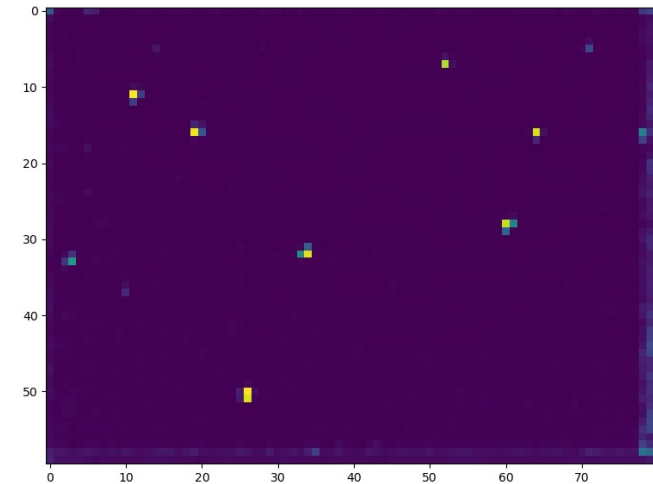
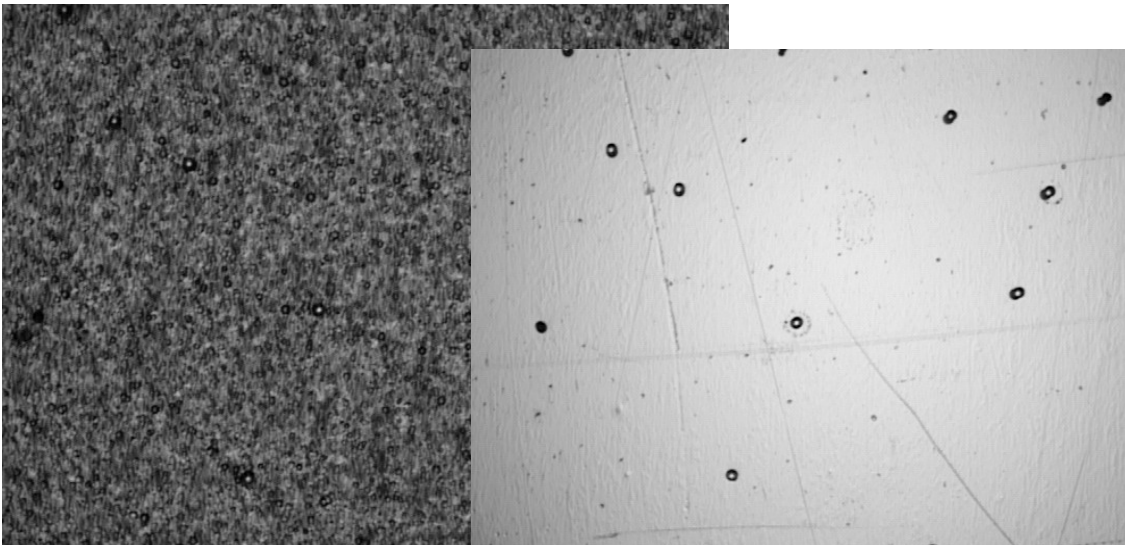
[0.1,0.5] can indicate lighter features, may / may not be identified as pits in unexposed foils known etch-pits (hard to spot in image)

[0.5,1.0] definite well identified etch-pits

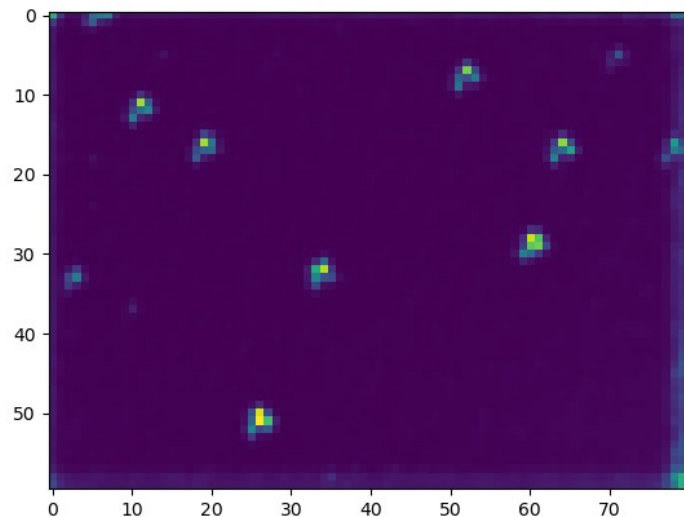


Ensemble

- Multiple Cnns, trained on different data folds
- Can be combined to reinforce each other and reduce model variations
- Similar models can be combined as average or otherwise (eg to increase sensitivity to weak scoring objects)
- Identified locations can be reclassified the original CNNs with a different working point to that used for search
eg, Low wp. Broad Candidate search
→ High wp. Priority candidates



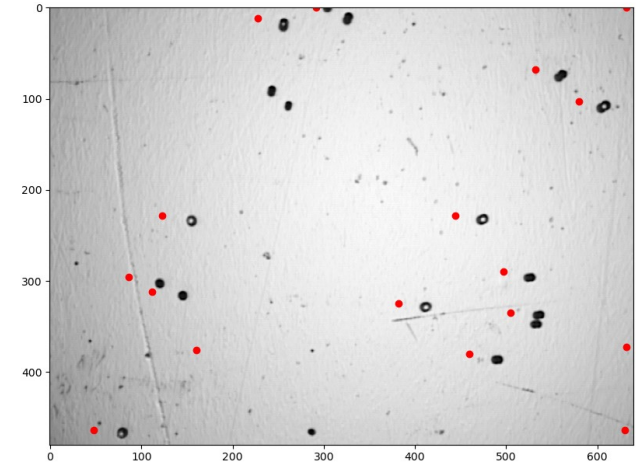
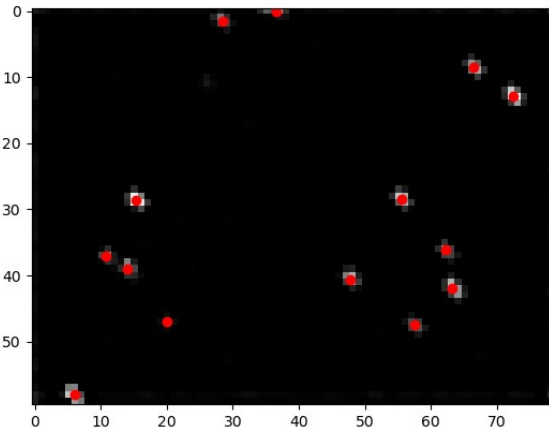
Prediction for cnn 1/5



Combined Prediction – w. smearing

Location predictions

- Some variability due to method (and threshold) used to convert heatmap to discrete locations - may induce miss/double counting in quantitative eval
- WIP to improve robustness



'unexposed truth' vs predicted locations from exposed
offset due to foil alignment

