



Science and  
Technology  
Facilities Council

# Resources Review Meeting: 2020Q3+4 ATLAS RAL

James Walder  
27 01 2021

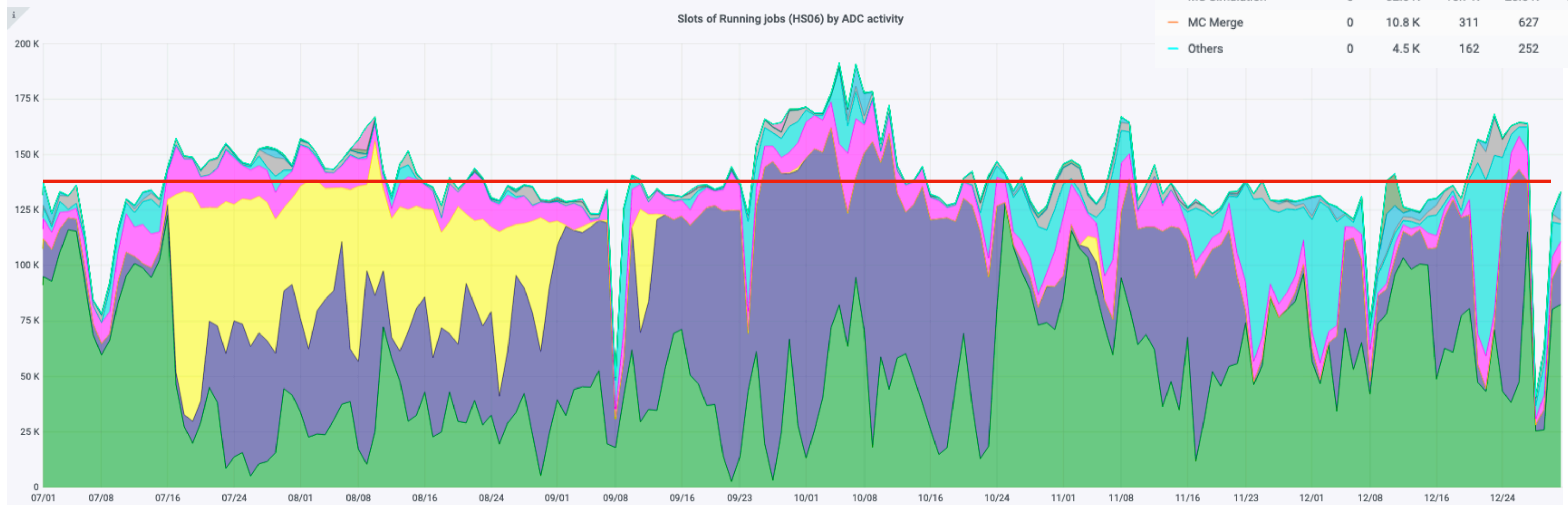
# Highlights

- Reporting period:
  - Q3+4 2020: 1 Sep – 31 Dec (accompanying separate slides for just Q3 and Q4 available)
- Highlights:
  - Deletion campaigns on MCTAPE and DATATAPE
  - Data reprocessing (in Data Carousel model) for full Run-2 data, for RPVLL analysis
    - Disk carousel as ‘production’; “Staging throughput at RAL has been high and stable. What are your secrets to reach such a good performance ? :)”
  - Changes to data placement model => fewer replicas on disk of AOD formats
  - Repack of ATLAS Tape to new robot largely completed over this period (Q4).
- Major issues / events:
  - Occasional ATLAS/CERN issues, time taken for ATLAS to recover to fairshare
- New/Ongoing Issues
  - RAL to be able to run singularity in unprivileged mode; Experiments can then use own version of Singularity (from CVMFS)
    - Rolled into updating to Centos7 (and related batch farm services).
    - Also presume RAL to move to WLCG baseline version (3.5.2) for local version.

# Batch farm CPU commitment

- 2020–21 pledge: **156.4** kHS06 (13.9% of ATLAS T1 pledge)
  - Increases to 173.2 kHS06 from 2021 Q2
- (Pledge line scaled by 10/11.7 to match effective corepower of site in Plot).

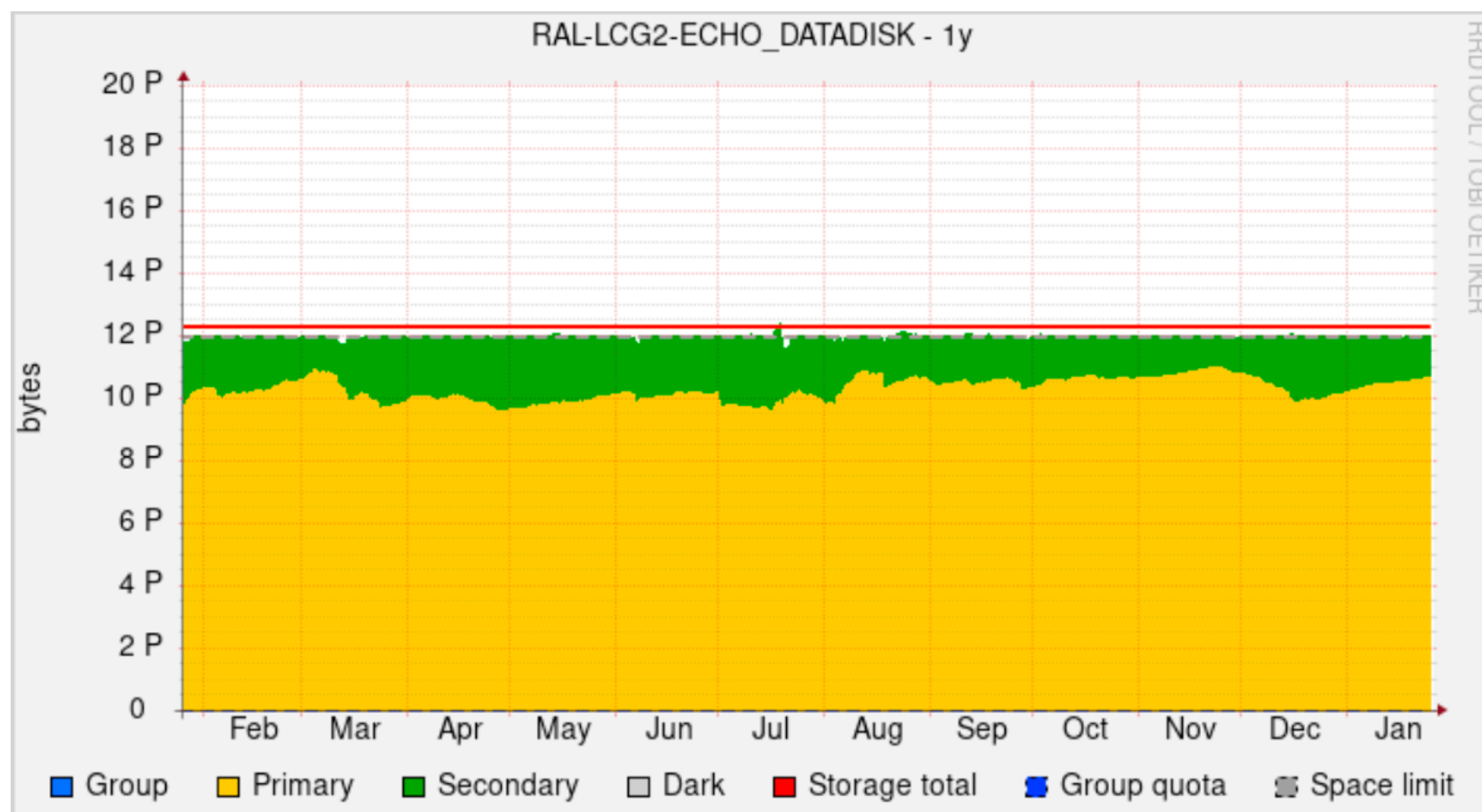
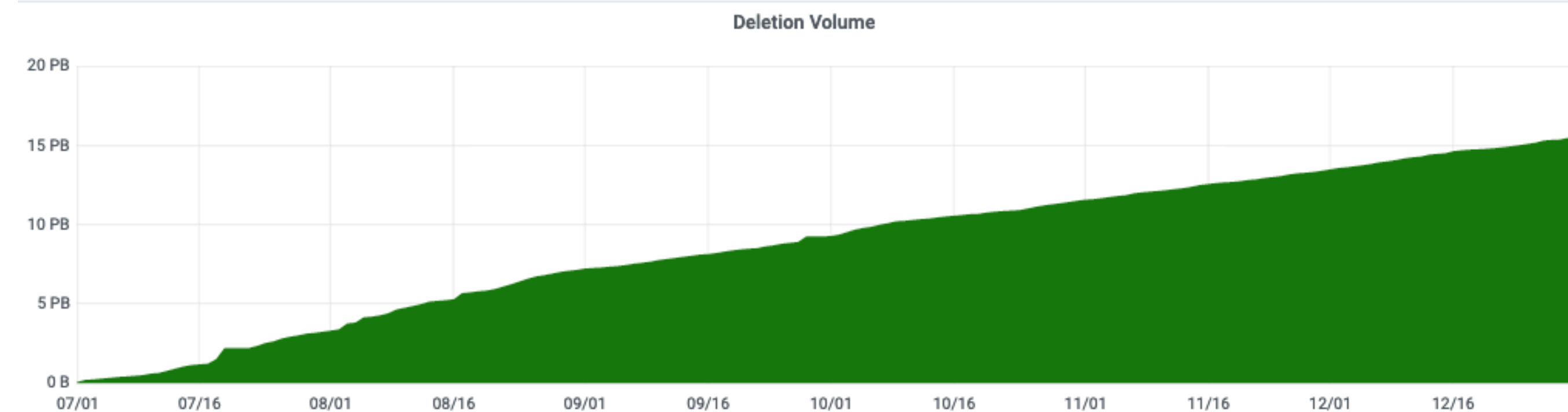
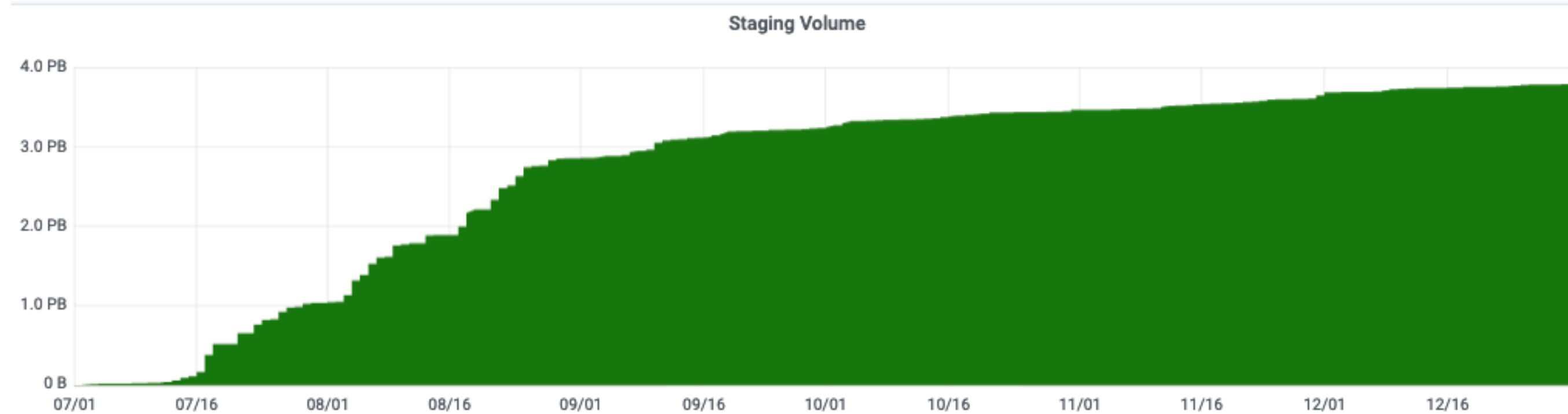
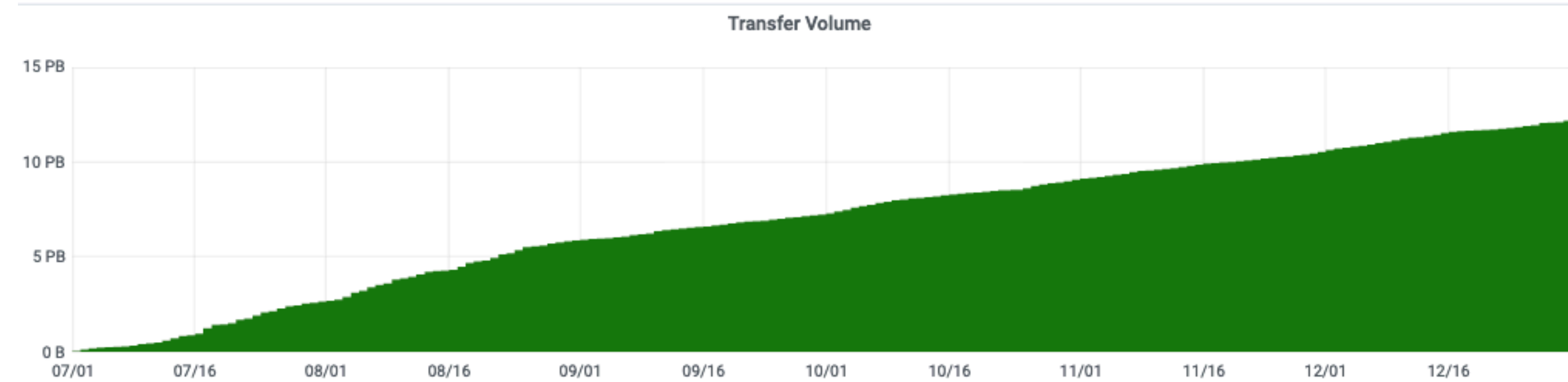
	min	max	avg	current	total
Group Production	2.7 K	127.8 K	53.2 K	82.4 K	9.8364 T
MC Reconstruction	6	143.5 K	45.5 K	19.8 K	8.4181 T
Data Processing	0	102.9 K	14.5 K	0	2.6764 T
Analysis	342	33.7 K	13.1 K	10.3 K	2.4255 T
MC Simulation	0	82.0 K	10.7 K	20.0 K	1.9826 T
MC Merge	0	10.8 K	311	627	57.6
Others	0	4.5 K	162	252	29.9



- Average over period: **160.8** =  $137.4 * (11.7/10)$  kHS06 (with scaling of corepower).

# Disk usage

- 12PB used on disk
  - 15.6PB deleted over period
  - (includes scheduled lifetime deletion and obsolesce campaigns).
- Pledge to increase to 15.5PB from 2021 Q2



# Tape

- ~24 PB used at end of period (~32PB pledged).
- 8 PB deleted over period.

- 4.8PB transferred into Tape over the period
- Pledge to increase to 34.8 PB from 2021 Q2

