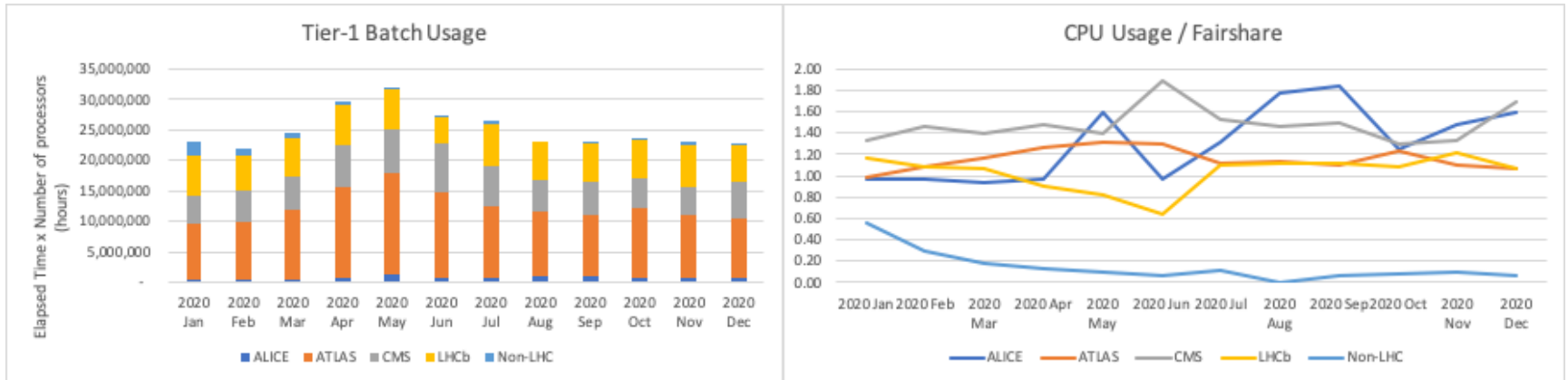


# Experiment Resource Usage

# CPU usage

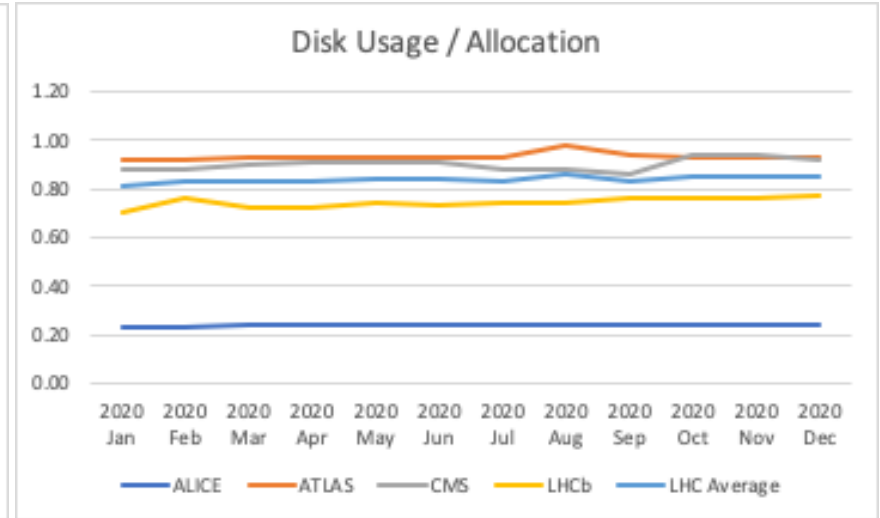
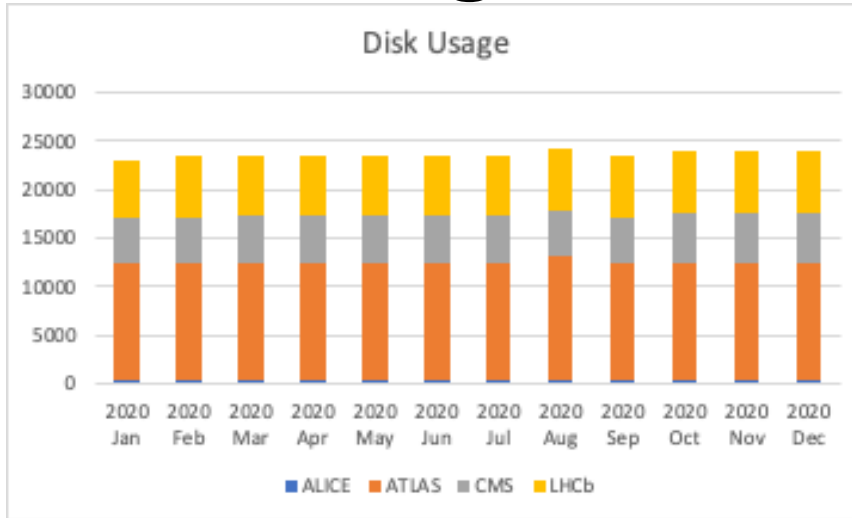


	2020 Jan	2020 Feb	2020 Mar	2020 Apr	2020 May	2020 Jun	2020 Jul	2020 Aug	2020 Sep	2020 Oct	2020 Nov	2020 Dec
ALICE	495,849	470,636	507,078	638,351	1,132,630	585,478	773,662	906,080	937,213	653,402	753,433	801,061
ATLAS	9,045,135	9,504,706	11,405,682	14,925,560	16,888,304	14,149,728	11,794,164	10,573,028	10,150,352	11,589,360	10,180,360	9,720,238
CMS	4,801,756	5,010,961	5,340,933	6,925,978	7,057,414	8,138,658	6,379,019	5,316,907	5,386,818	4,810,743	4,781,326	6,079,343
LHCb	6,561,059	5,858,582	6,453,564	6,598,097	6,529,994	4,262,488	7,170,628	6,413,105	6,343,609	6,296,588	6,913,018	5,971,874
Non-LHC	2,155,979	1,078,407	731,979	637,311	499,846	304,850	518,937	-	254,775	351,252	409,019	240,043
Total	23,059,778	21,923,292	24,439,236	29,725,297	32,108,188	27,441,202	26,636,410	23,209,120	23,072,767	23,701,344	23,037,157	22,812,558

- Accounting problem meant non-LHC data was lost in August.



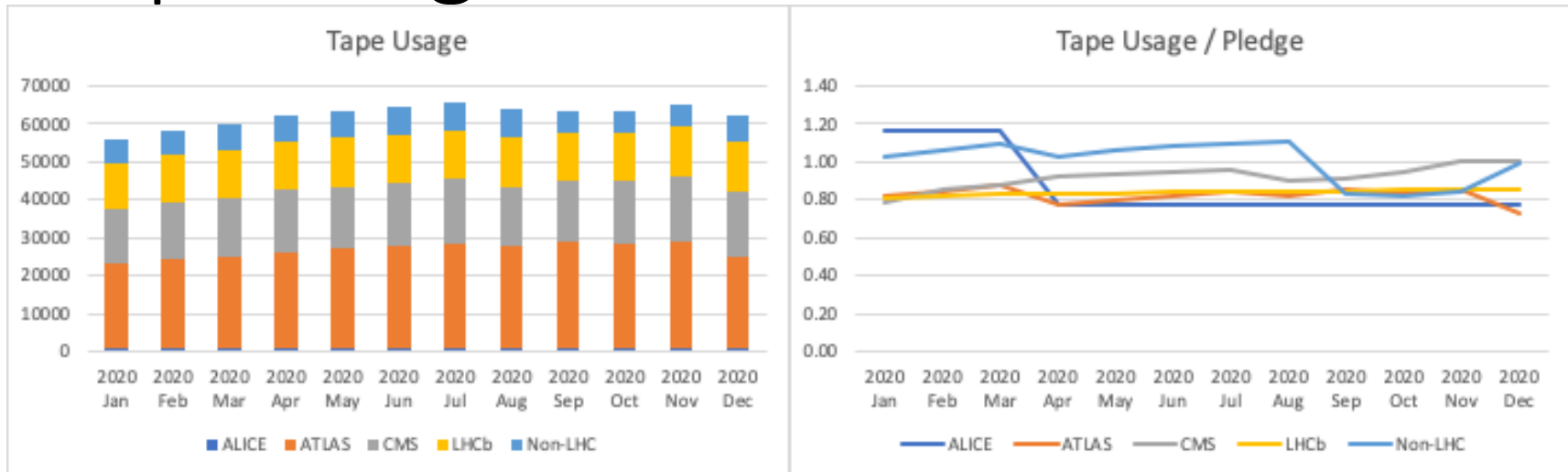
# Disk usage



Usage	2020 Jan	2020 Feb	2020 Mar	2020 Apr	2020 May	2020 Jun	2020 Jul	2020 Aug	2020 Sep	2020 Oct	2020 Nov	2020 Dec
ALICE	314	314	322	322	322	322	322	322	323	323	322	323
ATLAS	12,000	12,000	12,170	12,150	12,161	12,170	12,167	12,812	12,180	12,140	12,137	12,143
CMS	4,774	4,814	4,890	4,930	4,929	4,960	4,806	4,800	4,690	5,090	5,116	5,006
LHCb	5,859	6,351	6,020	6,060	6,200	6,140	6,211	6,210	6,350	6,410	6,396	6,470
Total	22947	23479	23402	23462	23612	23592	23506	24144	23543	23963	23971	23942

- ALICE usage stayed low in the first half of the year due to bug in xrdcp -f.
- Dune only non-LHC VO using storage so far (955TB).

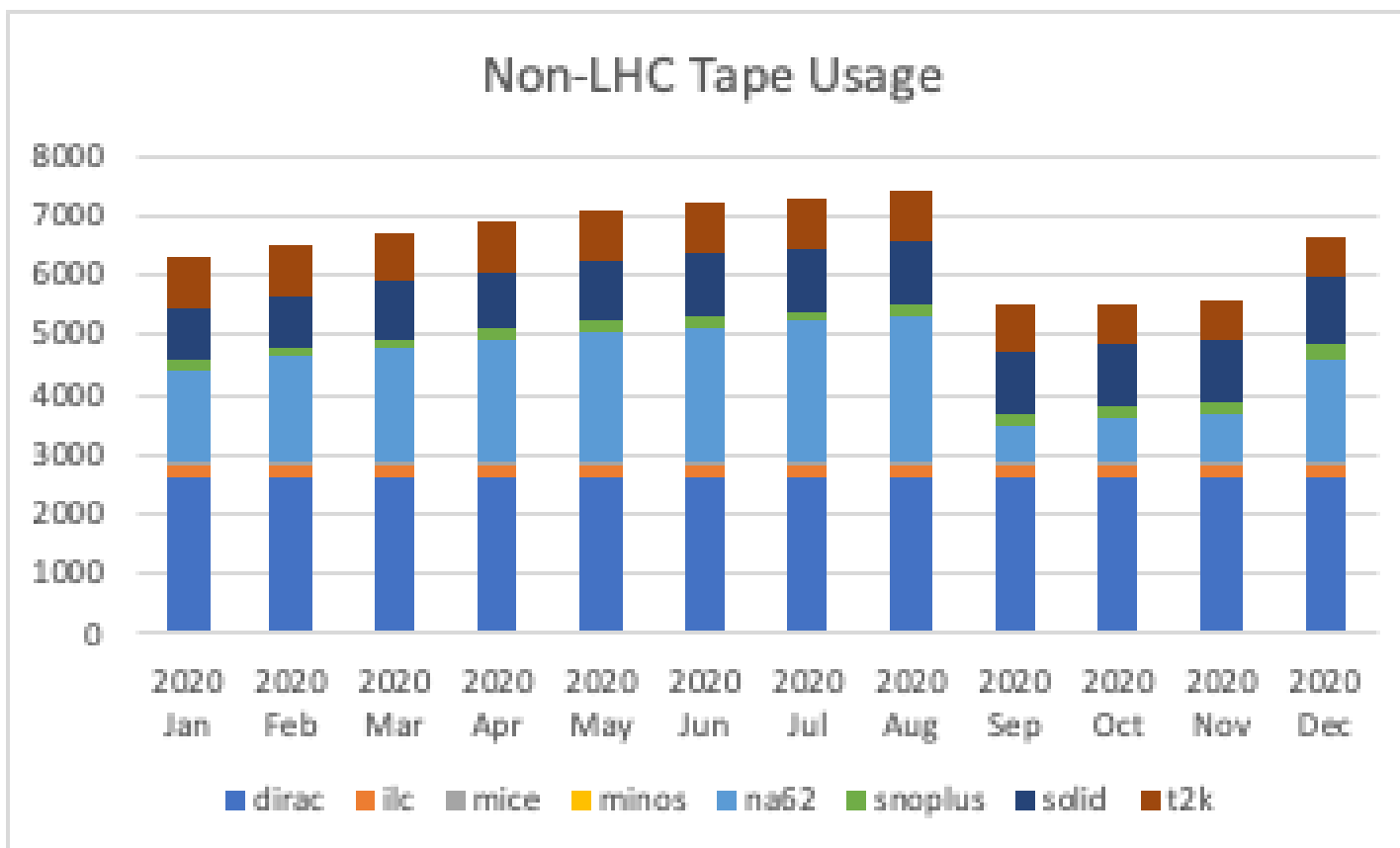
# Tape usage



Usage	2020 Jan	2020 Feb	2020 Mar	2020 Apr	2020 May	2020 Jun	2020 Jul	2020 Aug	2020 Sep	2020 Oct	2020 Nov	2020 Dec
ALICE	882	882	882	882	882	882	882	882	882	882	882	882
ATLAS	22550	23347	24235	25315	26194	27027	27658	26832	28065	27285	27815	23868
CMS	13911	15066	15537	16335	16435	16598	16816	15837	16088	16770	17723	17718
LHCb	12391	12499	12669	12740	12756	12861	12877	12904	12920	12973	12990	12999
Non-LHC	6280	6509	6714	6893	7070	7202	7292	7412	5522	5492	5596	6611
Total	56014	58303	60037	62165	63337	64570	65525	63867	63477	63402	65006	62078

- Na62 usage has increased by ~2PB since start of January.

# Non-LHC Tape usage



Usage	2020 Jan	2020 Feb	2020 Mar	2020 Apr	2020 May	2020 Jun	2020 Jul	2020 Aug	2020 Sep	2020 Oct	2020 Nov	2020 Dec
dirac	2605	2605	2605	2605	2605	2605	2605	2605	2605	2605	2605	2605
ilc	216	216	216	216	216	216	216	216	216	216	216	216
mice	44	44	44	44	44	44	44	44	44	44	44	44
minos	12	12	12	12	12	12	12	12	12	12	12	12
na62	1548	1748	1915	2043	2170	2261	2350	2463	599	701	766	1723
snoplus	141	144	151	166	178	182	175	182	184	194	205	230
solid	879	904	935	971	1009	1046	1054	1054	1054	1066	1094	1127
t2k	835	836	836	836	836	836	836	836	808	654	654	654

# Tape packing efficiency

- Tape packing efficiency is not calculated correctly during migration from T10KD to IMB JE Media.
  - Empty tapes contribute to poor packing efficiency.