

FCCIS WP4 IMPACT & SUSTAINABILITY

Introduction on the socio-economic impact model



Objectives and tasks of WP4

Recommendations for a cost-effective and sustainable infrastructure

Estimates of ranges and likelihood of different impacts

Socio-economic impact analysis

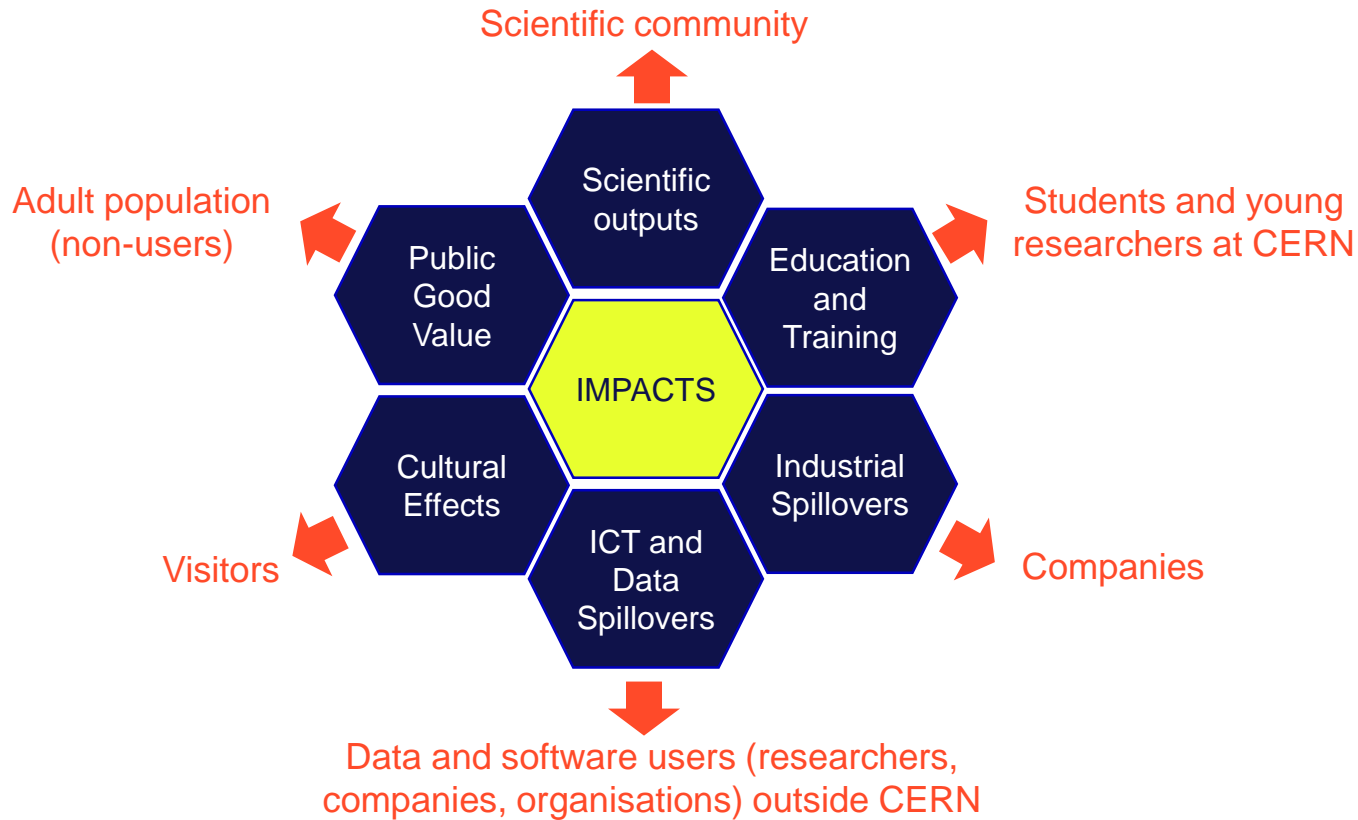
Regional and territorial benefit potential identification

Develop the financial roadmap of the project

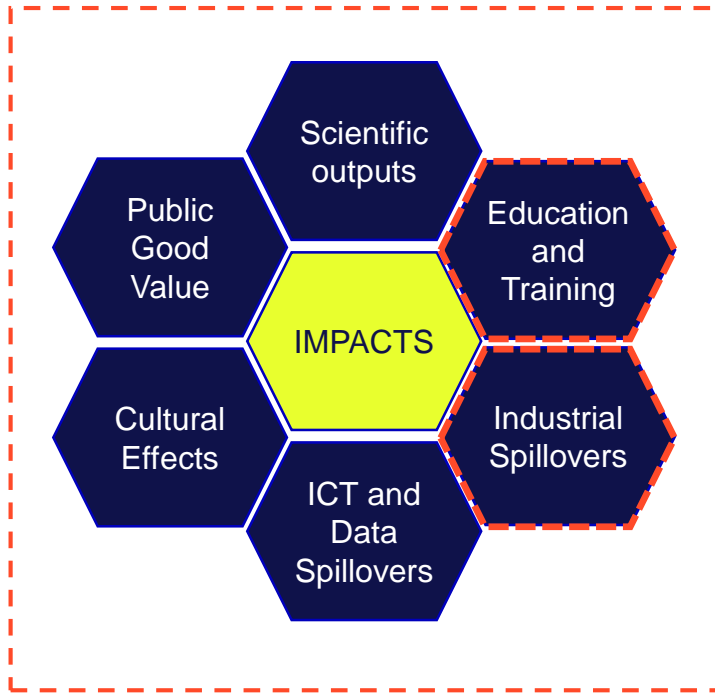
Cost estimates

Implementation, financing and in-kind contribution strategy

Socio-economic impact pathways



Introducing the speakers



Francesco Giffoni (CSIL): *Human capital formation at the FCC*

Gabriele Piazza (LSE): *Spatial impact analysis of Large Research Infrastructures: A case study on SRF cavities*

Amandine Bibet-Chevalier (CEREMA) with Leslie Alix, Giovanni Lamanna (CNRS-IN2P3/LAPP) and Federica Gorgerino (CEREMA): *Regional and territorial benefits identification: approach and method*