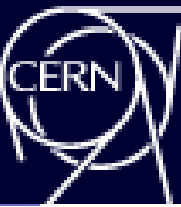




# AD FACILITY



## Technical Coordination Meeting

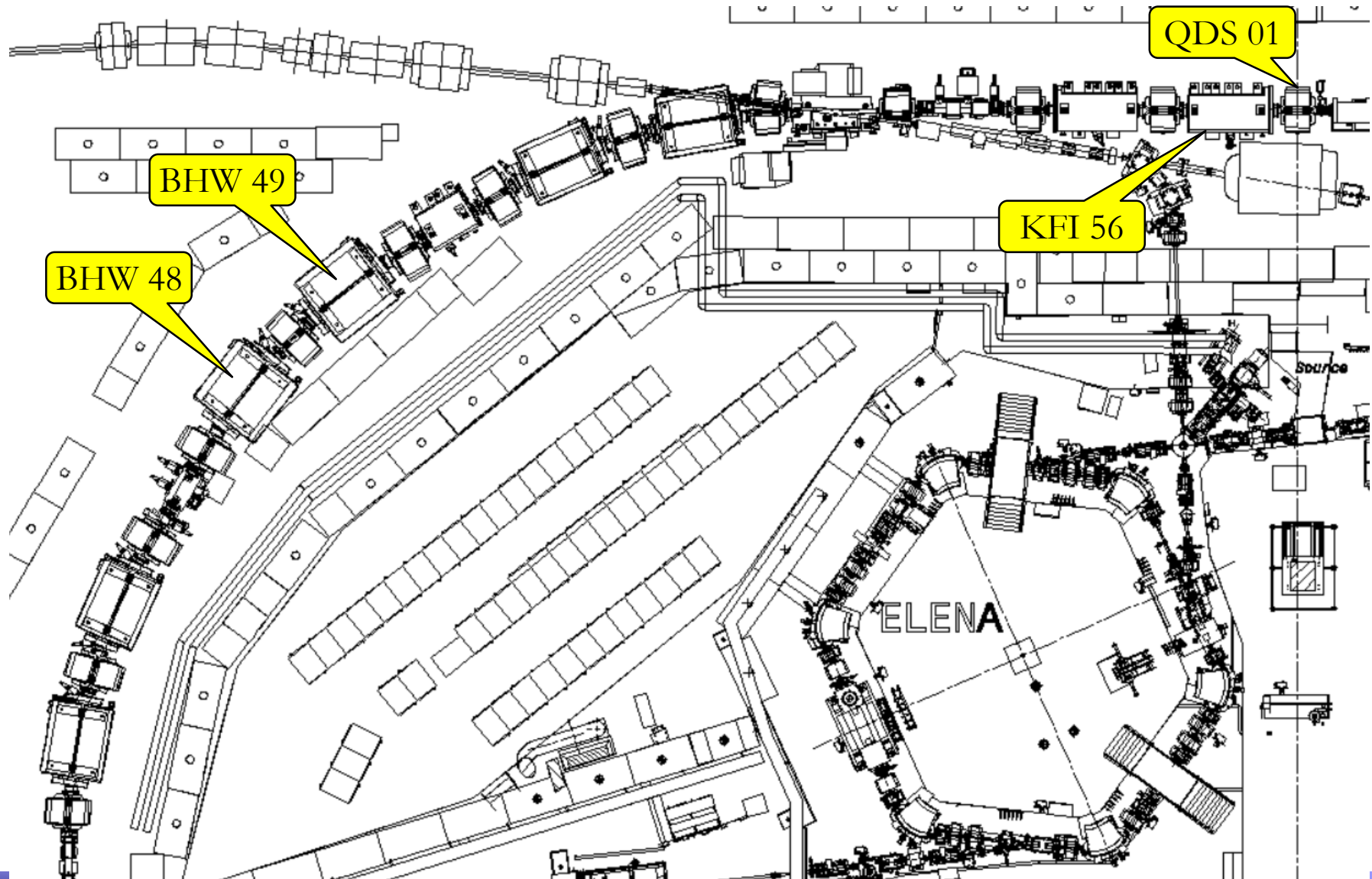
**YETS preparation**



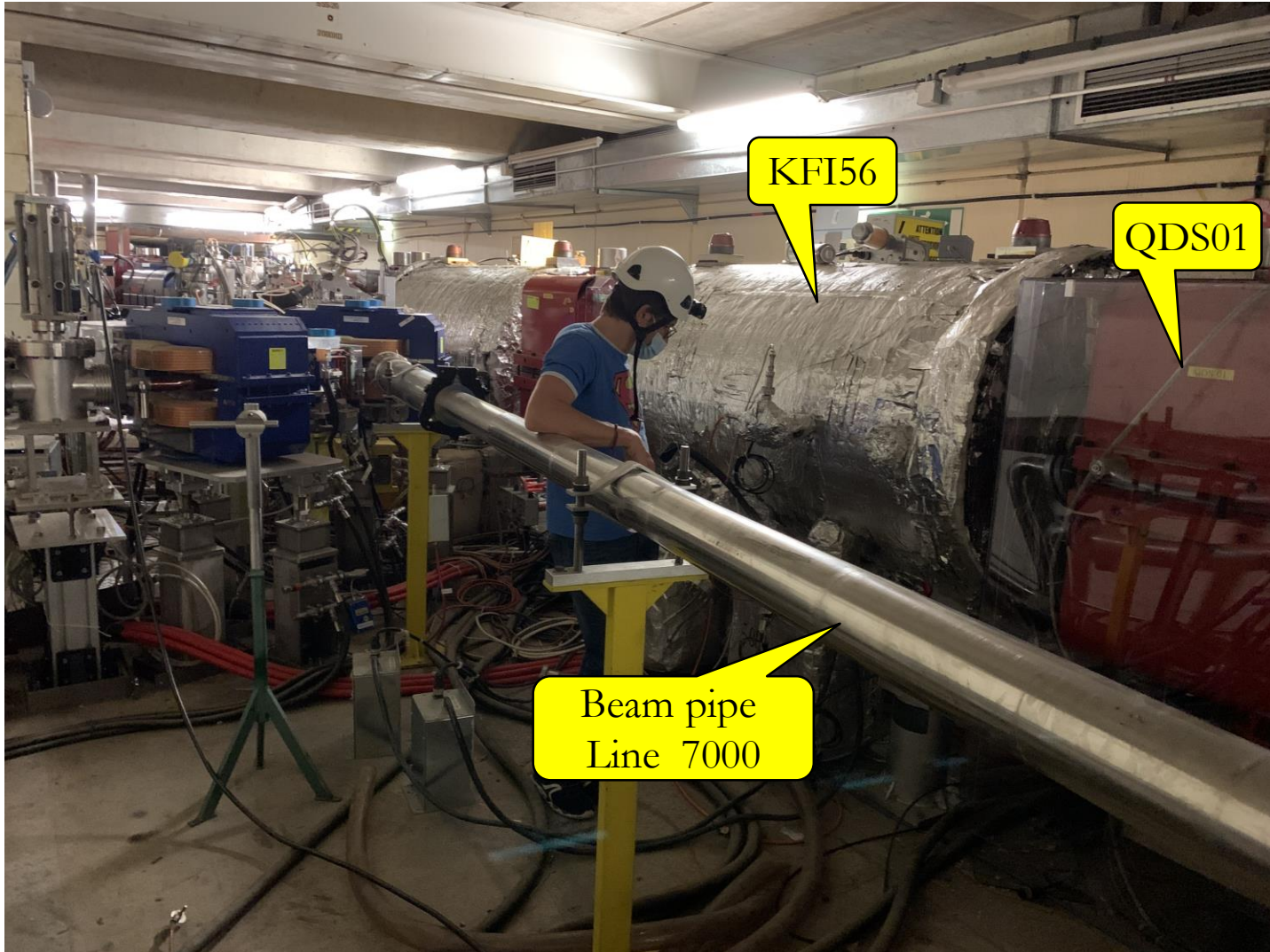
**ANTIMATTER  
FACTORY**



# AD works: sector 1 A

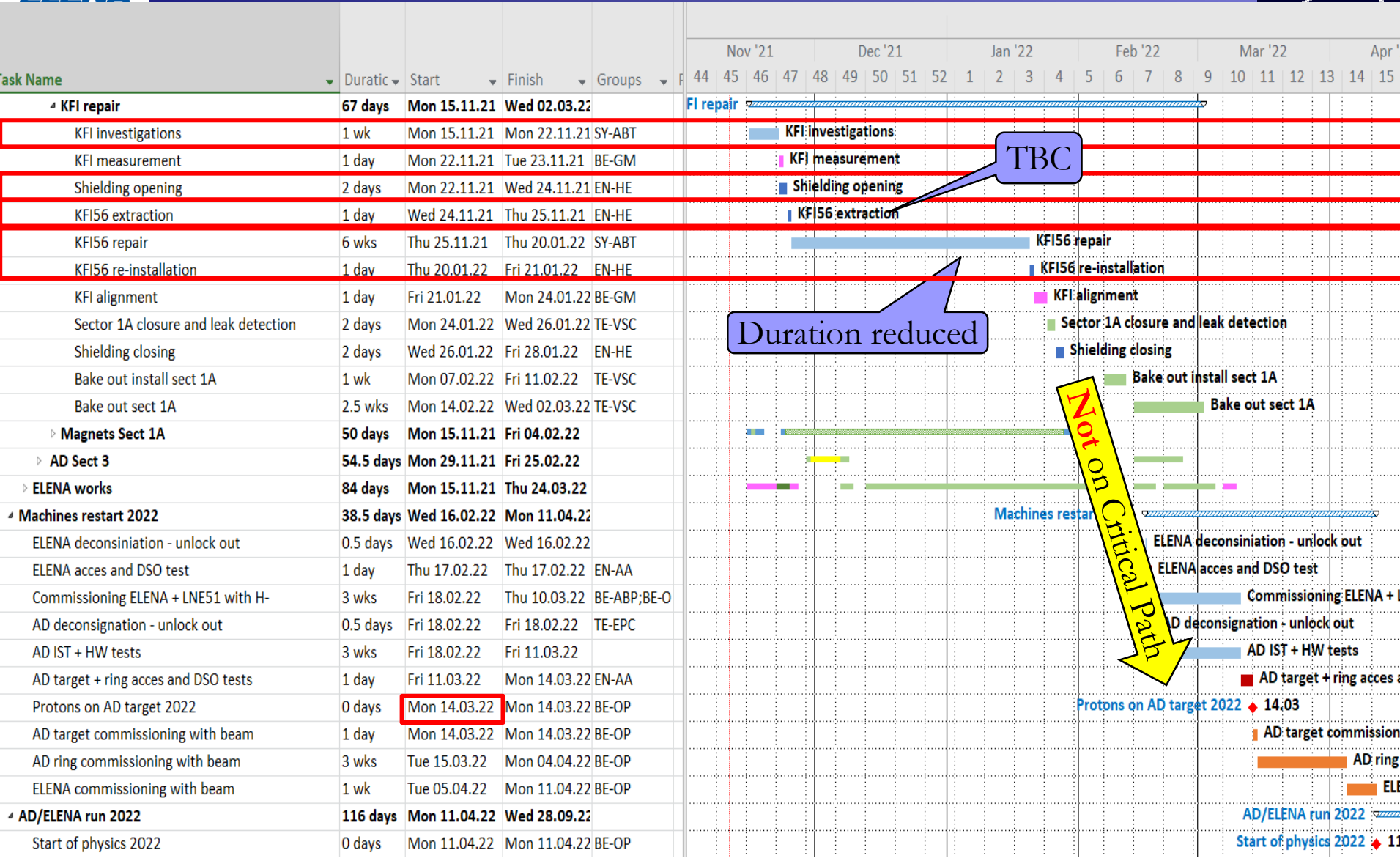
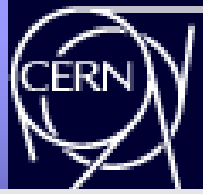


# AD KFI56 kicker repair





# AD KFI repair



TBC

Duration reduced

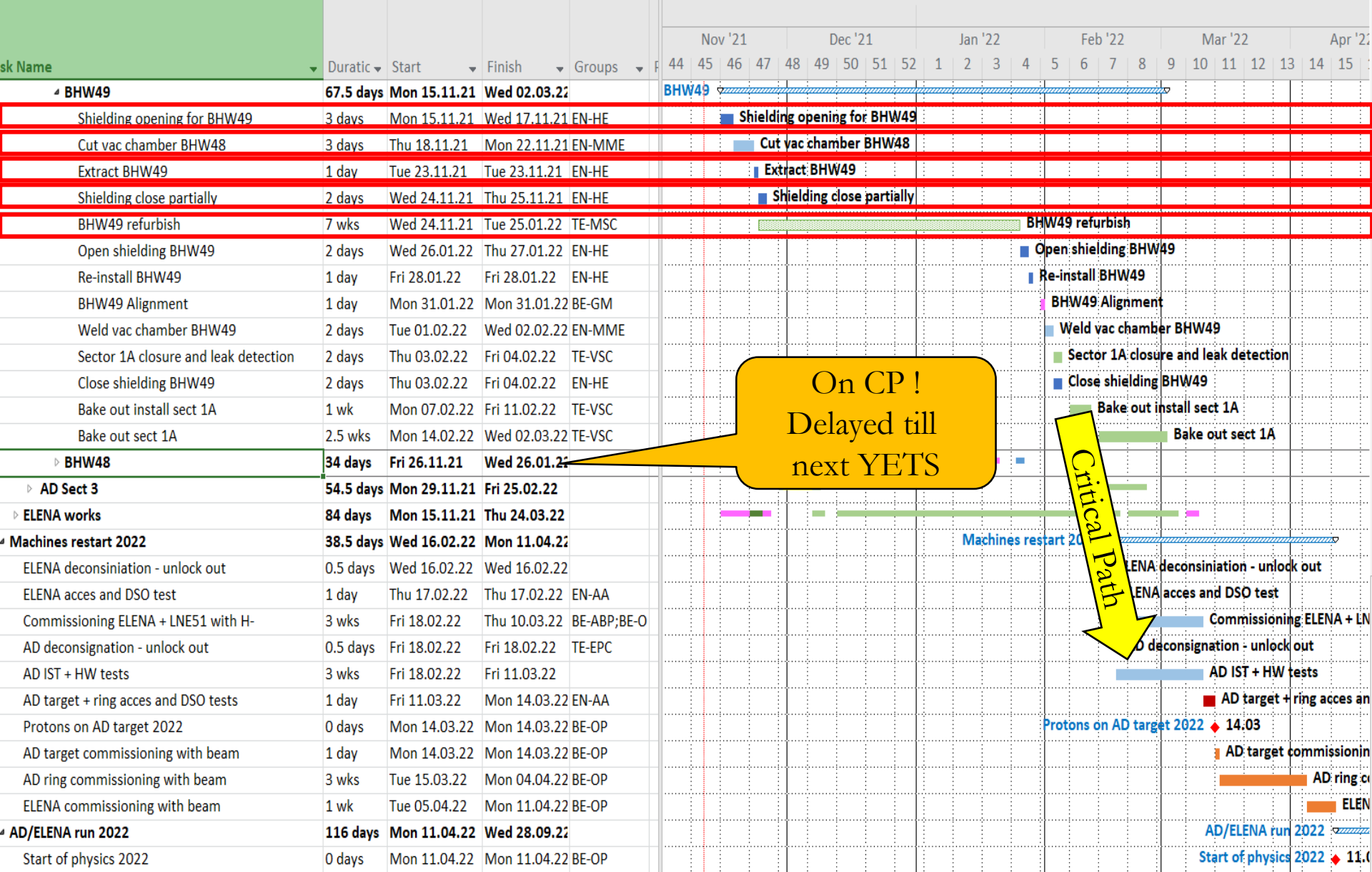
Not on Critical Path

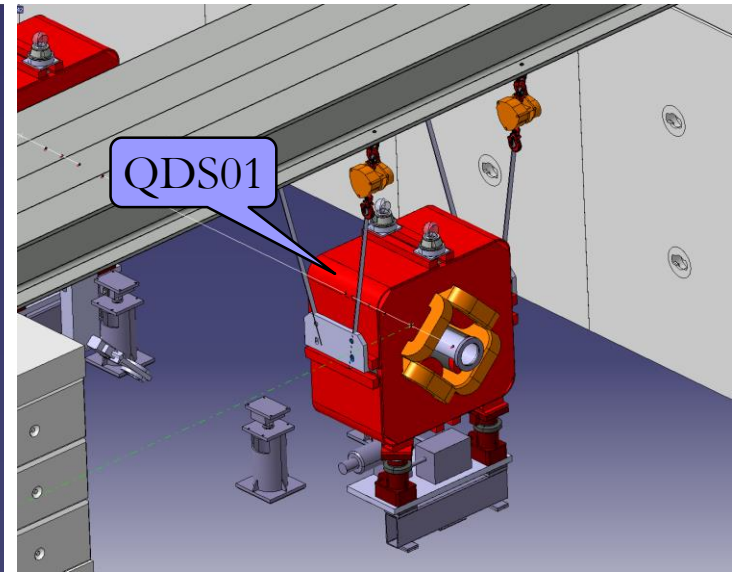
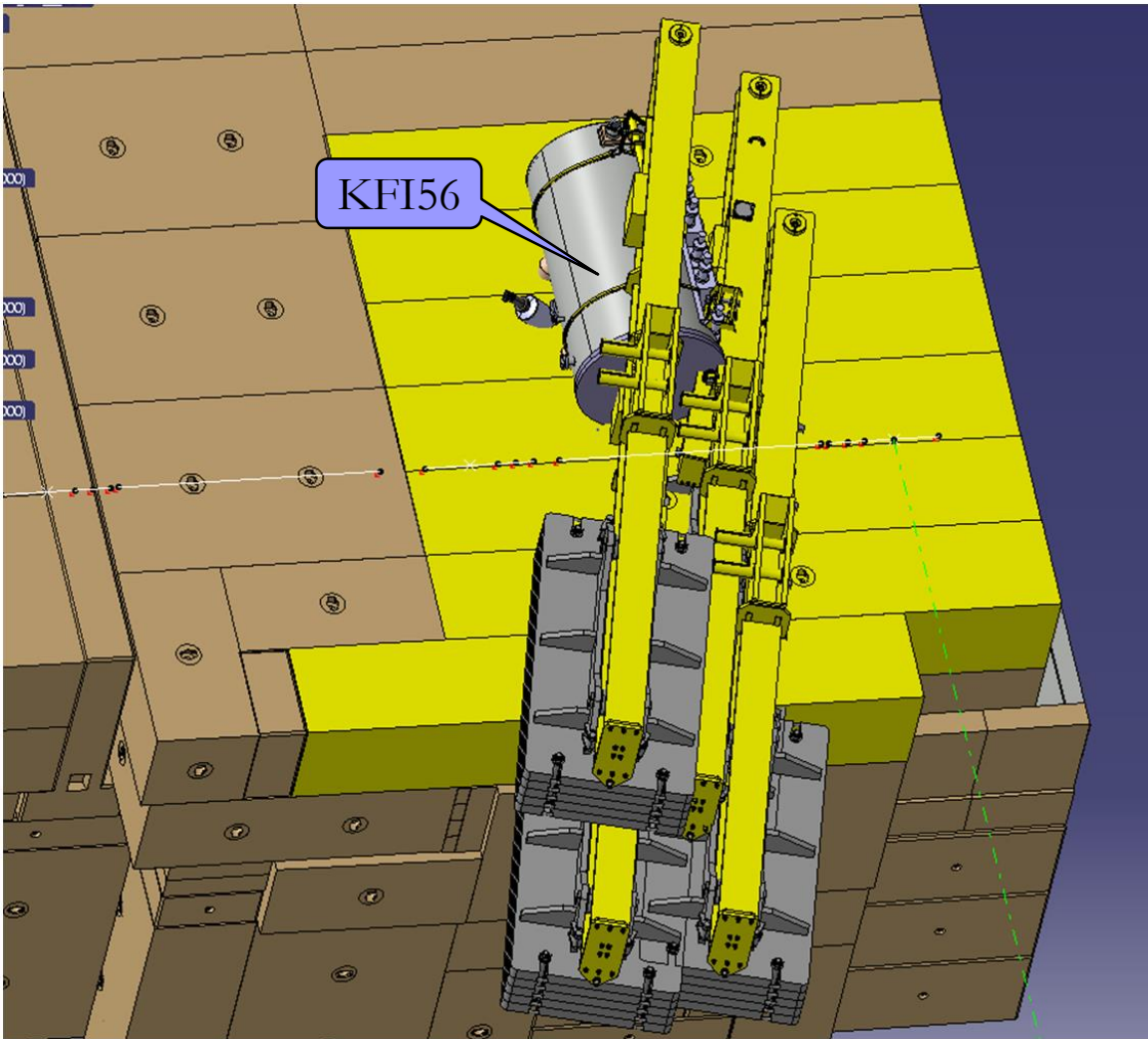
- If KFI is extracted for repair, it will stay in 193 to limit transport time and risks
- Will reduce space for shielding blocks storage





# AD Magnet BHW49

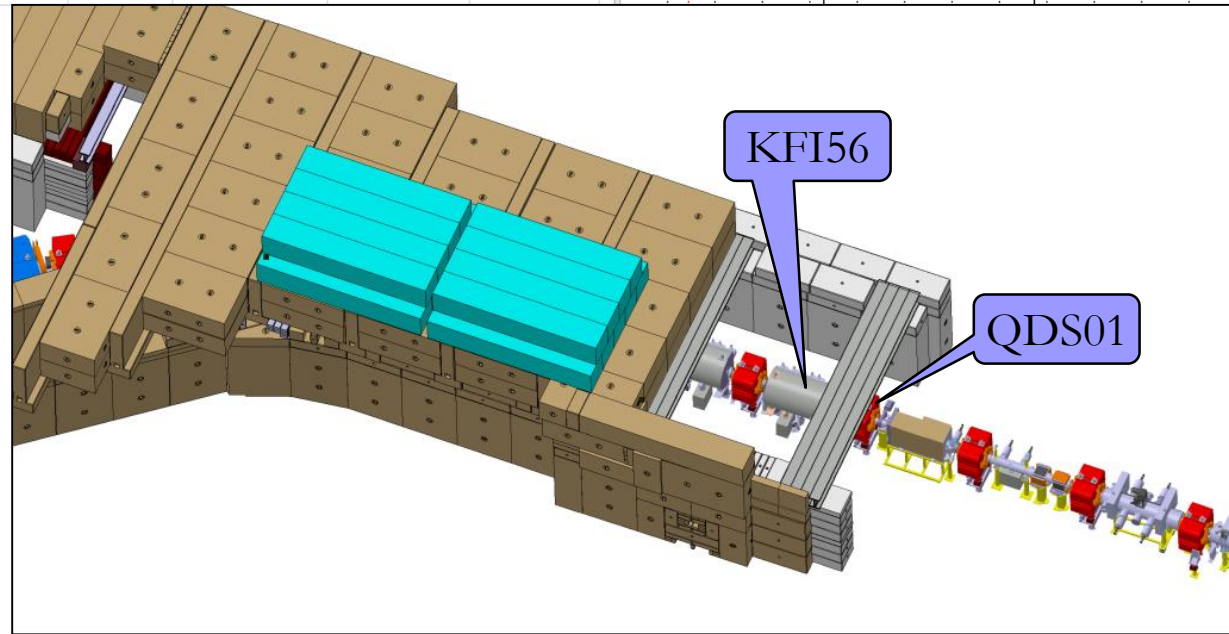




Same shield blocks to be opened for  
KFI56 or QDS01 extraction

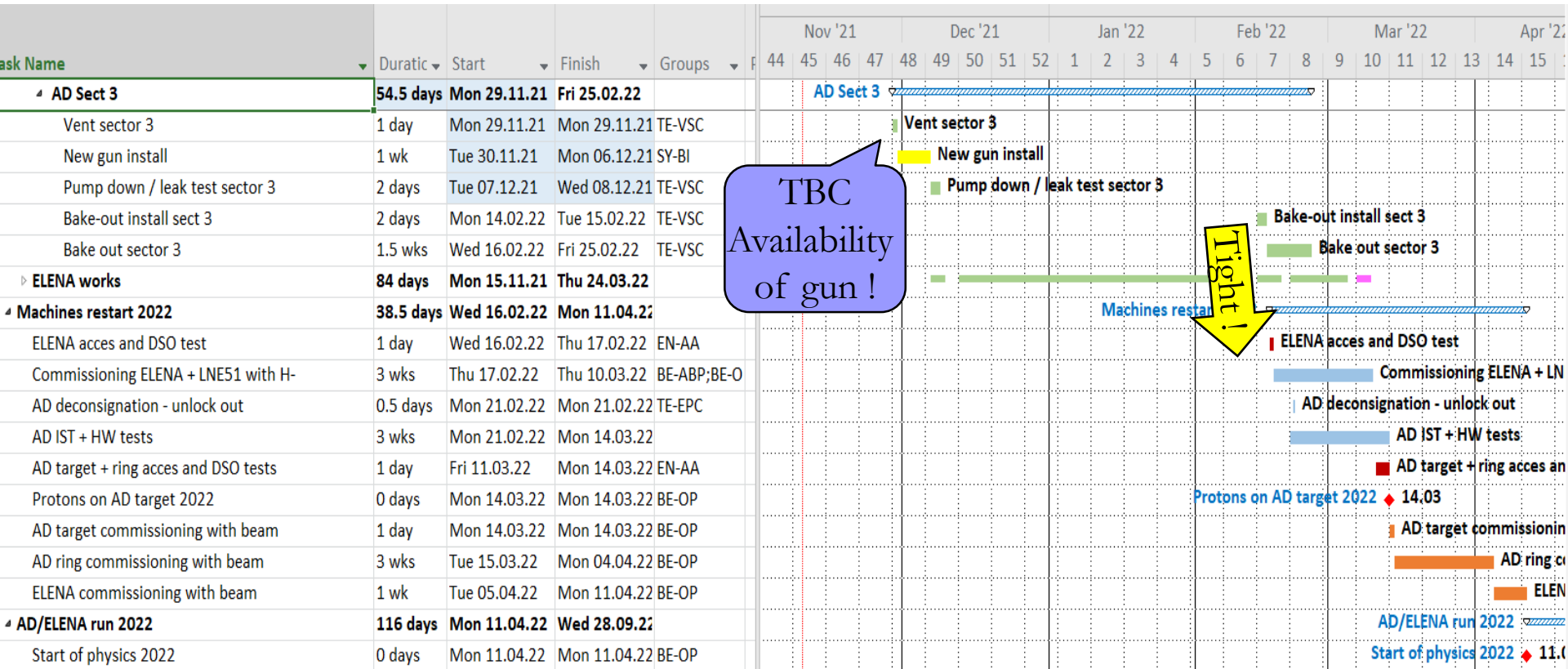
# AD QDS01 magnet

Task	Duration	Start	Finish	Groups	Timeline											
					Nov '21	Dec '21	Jan '22	Feb '22	Mar '22							
<b>QDS01</b>	<b>48.5 days</b>	<b>Tue 16.11.21</b>	<b>Fri 04.02.22</b>		QDS01											
Vent line 7000	0.5 days	Tue 16.11.21	Tue 16.11.21	TE-VSC	Vent line 7000											
Remove beam pipe section	0.5 days	Tue 16.11.21	Tue 16.11.21	TE-VSC	Remove beam pipe section											
Extraction tooling install	2 days	Wed 17.11.21	Thu 18.11.21	EN-HE	Extraction tooling install											
Extract QDS01	1 day	Thu 25.11.21	Fri 26.11.21	EN-HE	Extract QDS01											
Refurbish QDS01	7 wks	Fri 26.11.21	Fri 28.01.22	TE-MS	Refurbish QDS01											
Re-install QDS01	1 day	Fri 28.01.22	Mon 31.01.22	EN-HE	Re-install QDS01											
QDS01 alignment	1 day	Mon 31.01.22	Tue 01.02.22	BE-GM	QDS01 alignment											
QDS01 Shielding closing	2 days	Tue 01.02.22	Thu 03.02.22	EN-HE	QDS01 Shielding closing											
Pump down line 7000	1 day	Thu 03.02.22	Fri 04.02.22	TE-VSC	Pump down line 7000											





# Sect 3: AD e-cooler

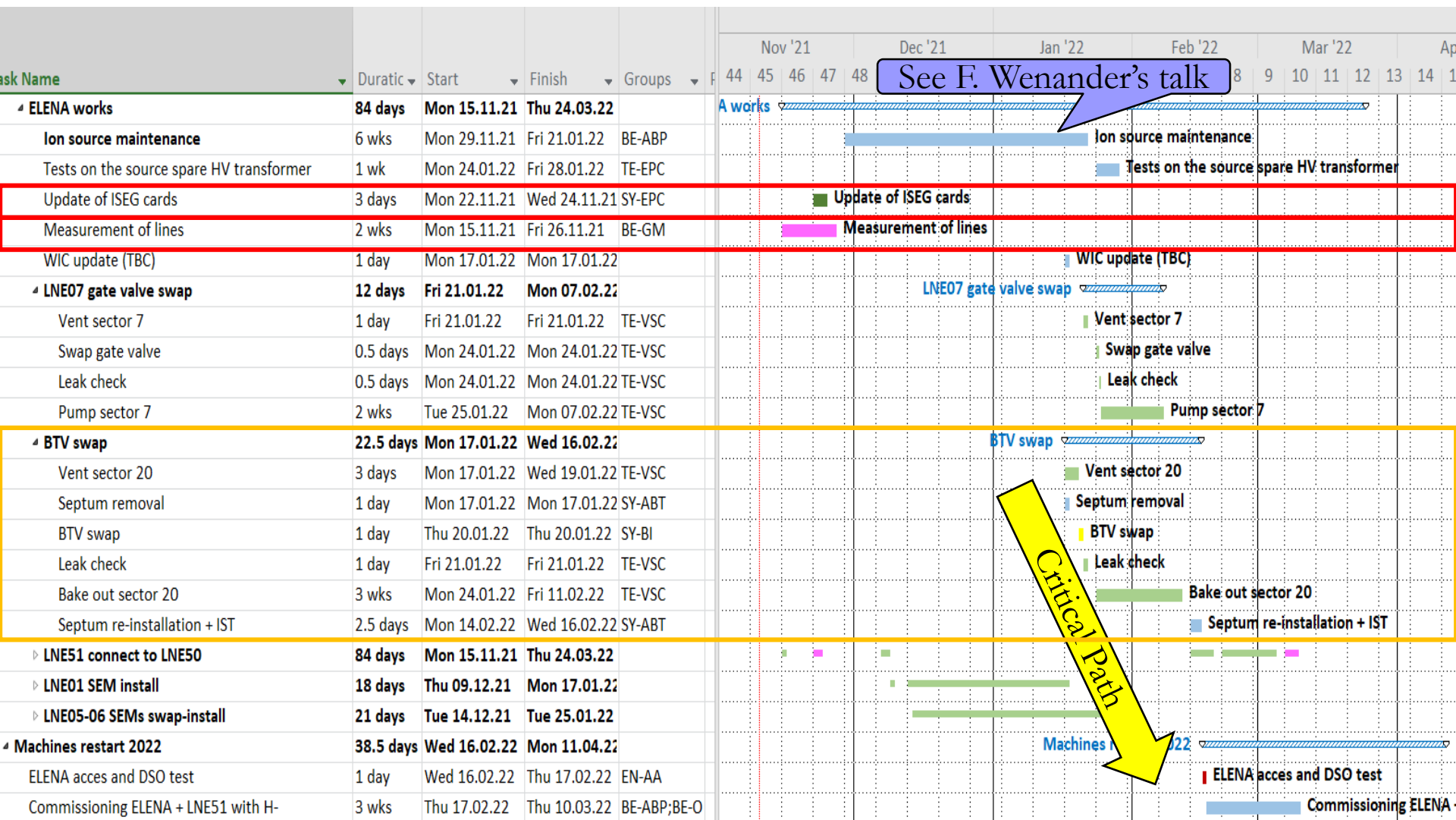


TBC  
Availability  
of gun !

Tight!



# ELENA works

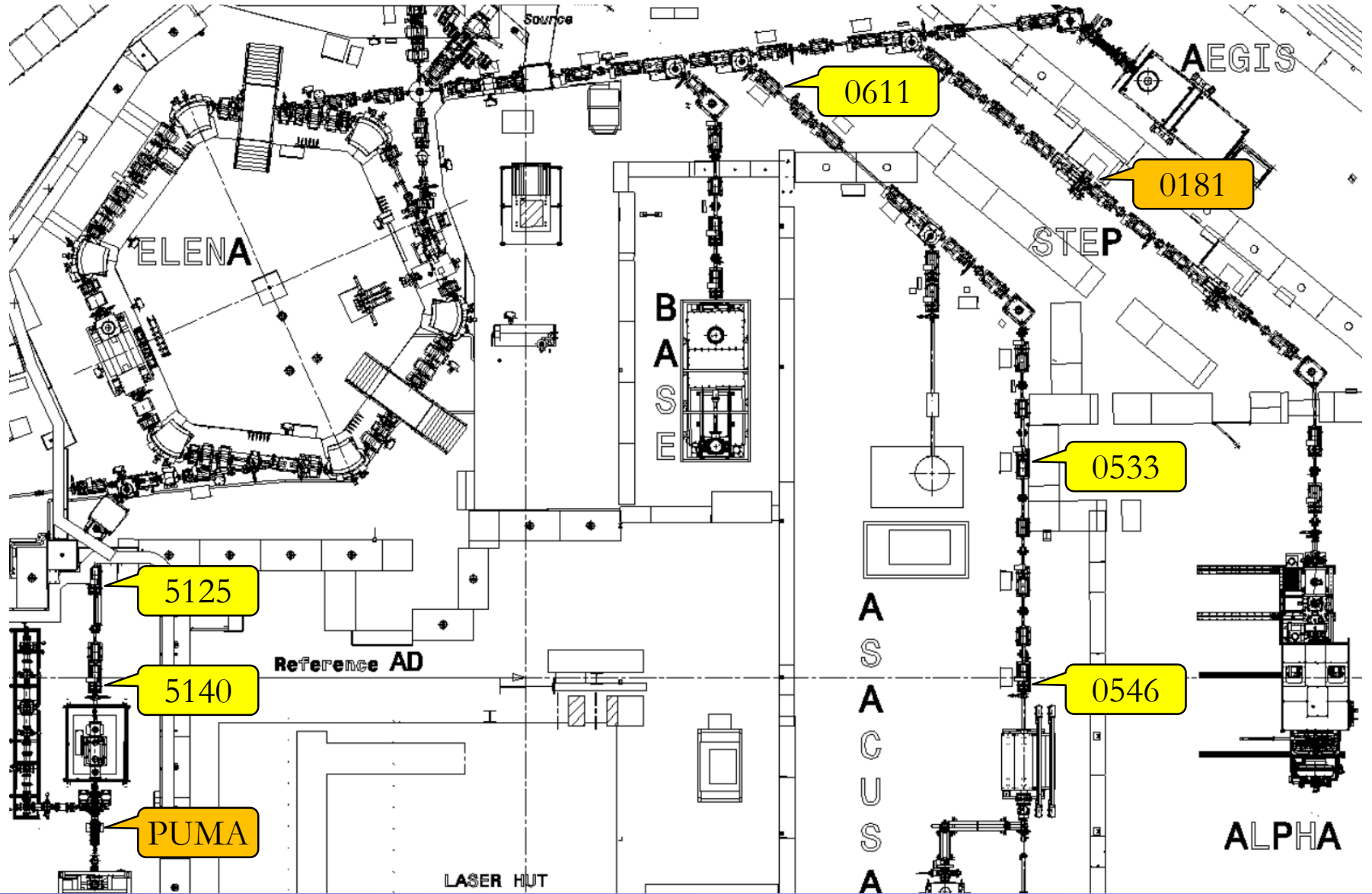


- 6 SEM units should be installed during YETS:
  - 2 for PUMA LNE51 transfer line (5125 and 5140) –  
Vac acceptance test to confirm repaired units are adequate
  - 1 for STEP LNE01 transfer line (0181 – fixed) – to be produced/assembled/tested
  - 3 for ASACUSA LNE05-06 transfer lines (0533, 0546, 0611) – to be produced/assembled/tested
  
- 1 SEM unit can be installed (shortly) after YETS:
  - PUMA experiment (fixed)



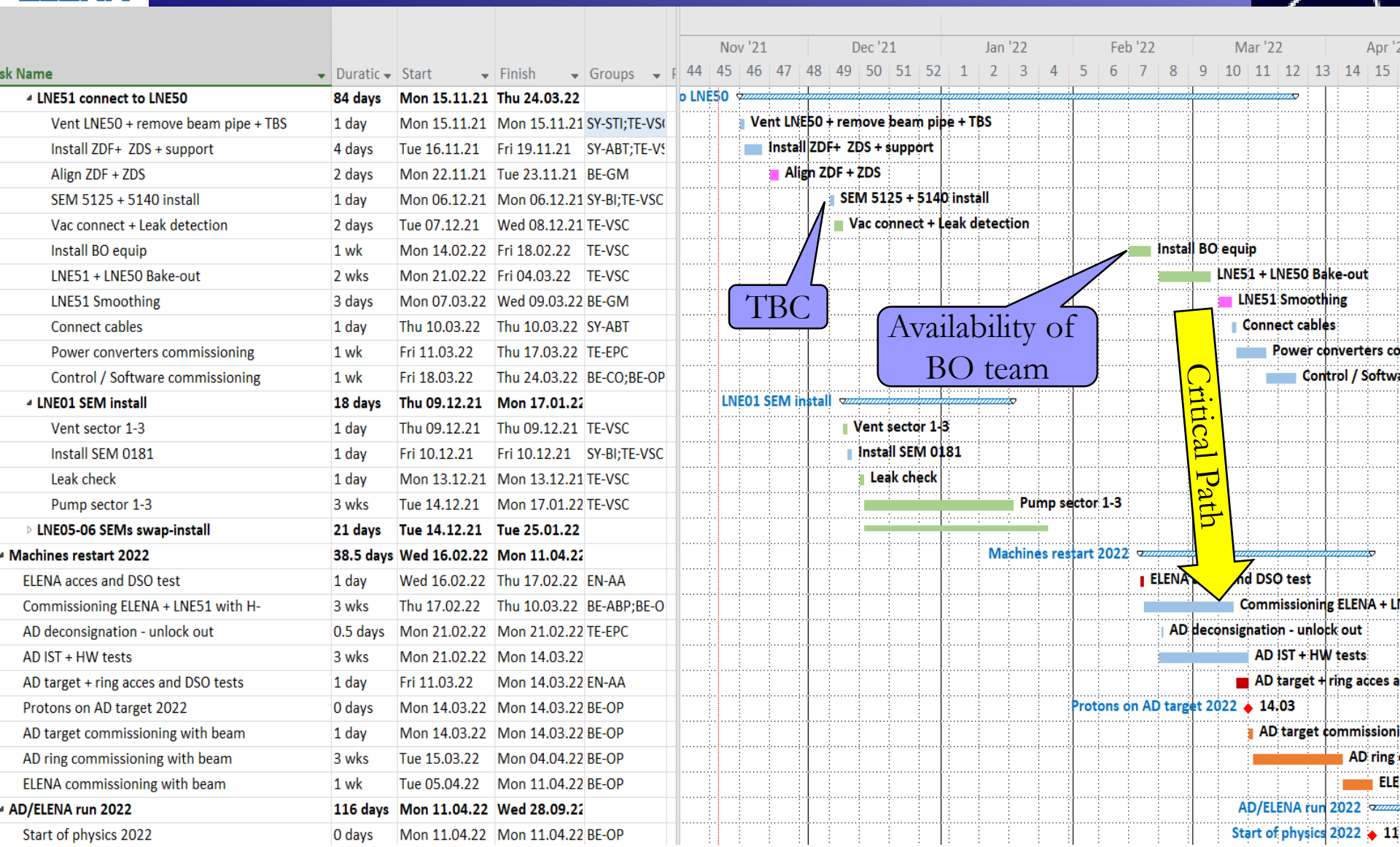
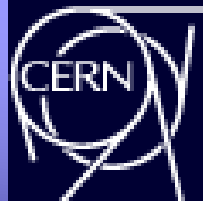
ELENA

# ELENA SEMs



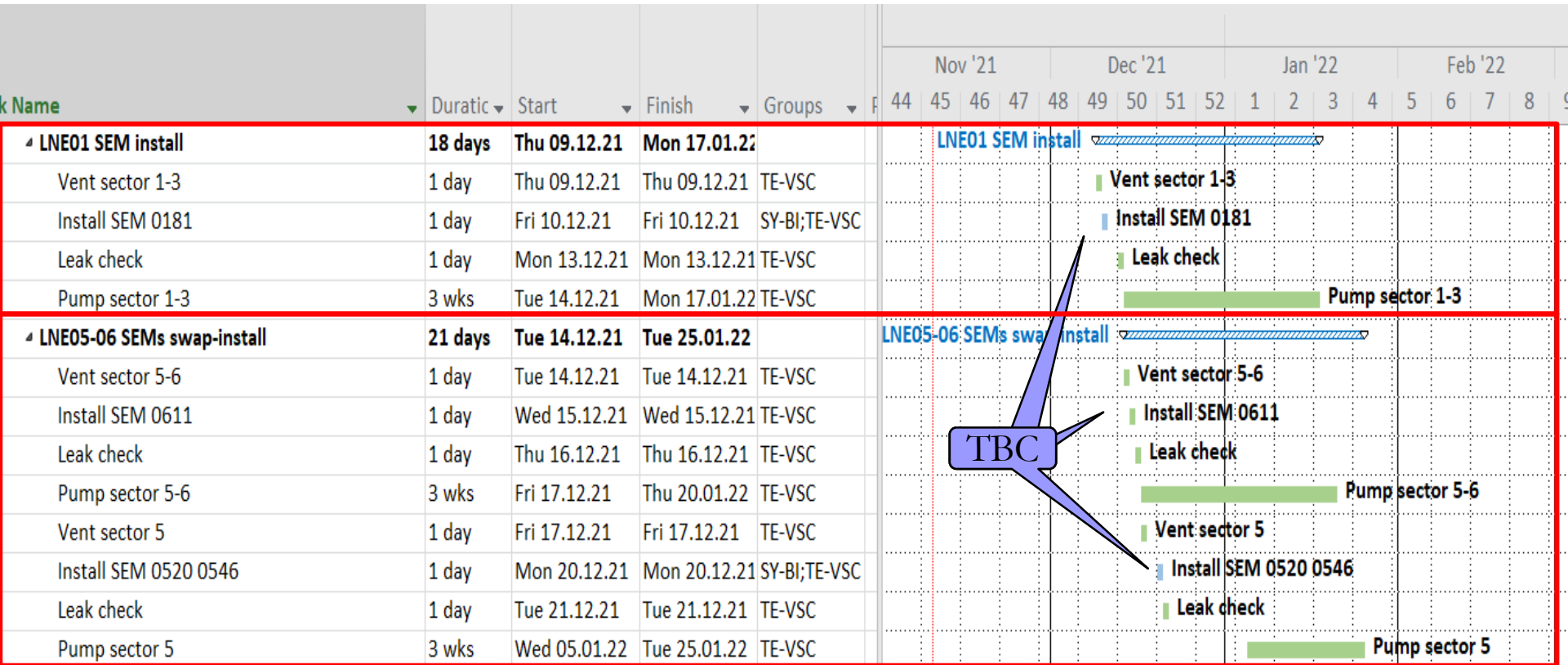
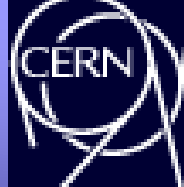


# LNE51 - PUMA





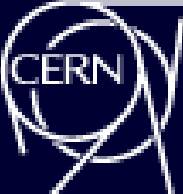
# YETS planning – ELENA machine



TBC



# Other activities / service disruptions



Task Name	Duratic	Start	Finish	Groups	Nov '21							Dec '21				Jan '22				Feb '22				Mar '22								
					44	45	46	47	48	49	50	51	52	1	2	3	4	5	6	7	8	9	10	11	12	13	14					
AD_ELENA Facilities	212 days?	Mon 15.11.21	Wed 28.09.22		Facilities																											
Cooling water un-availability	51 days	Fri 26.11.21	Fri 18.02.22		Cooling water un-availability																											
Demineralized water unavailble 2021	3 days	Fri 26.11.21	Tue 30.11.21	EN-CV	Demineralized water unavailble 2021																											
Demineralized water unavailble Xmas 2021	2 days	Tue 21.12.21	Wed 05.01.22	EN-CV	Demineralized water unavailble Xmas 2021																											
Demineralized water unavailble 2022	5 days	Mon 14.02.22	Fri 18.02.22	EN-CV	Demineralized water unavailble 2022																											
Cryogenics un-availability	5 days	Mon 14.02.22	Fri 18.02.22		Cryogenics un-availability																											
Cryo maintenance 2022 ?	1 wk	Mon 14.02.22	Fri 18.02.22	TE-CRG	Cryo maintenance 2022 ?																											
Power cuts	3 days	Fri 26.11.21	Tue 30.11.21		Power cuts																											
AUG tests 2021	2 days	Fri 26.11.21	Mon 29.11.21	EN-EL	AUG tests 2021																											
Secured networks tests 2021	1 day	Tue 30.11.21	Tue 30.11.21	EN-EL	Secured networks tests 2021																											
Ramp refurbishment	6 wks	Fri 17.06.22	Thu 28.07.22	SCE-SAM																												
ELENA side crane maintenance + PUMA alim	8 wks	Tue 19.04.22	Thu 16.06.22	EN-HE																												
YETS 21-22	92 days?	Mon 15.11.21	Tue 05.04.22		YETS 21-22																											
AD ring	70 days	Mon 15.11.21	Fri 04.03.22		AD ring																											
Consignation - Lock-out	0.5 days	Mon 15.11.21	Mon 15.11.21	TE-EPC	Consignation - Lock-out																											
Decabling AD old TLs	6 wks	Mon 17.01.22	Fri 25.02.22	EN-EL	Decabling AD old TLs																											
Cabling BTV	2 days	Wed 19.01.22	Thu 20.01.22	EN-EL	Cabling BTV																											
Cabling septa SMI/SME	1 day	Fri 21.01.22	Fri 21.01.22	EN-EL	Cabling septa SMI/SME																											
Cabling interlock doors/vac	2 days	Mon 24.01.22	Tue 25.01.22	EN-EL	Cabling interlock doors/vac																											
Decabling racks bdg 370	1 day	Wed 26.01.22	Wed 26.01.22	EN-EL	Decabling racks bdg 370																											
Magnet covers installation	4 wks	Mon 15.11.21	Mon 13.12.21	TE-MSC	Magnet covers installation																											
Tests on cryo vac in sect 2B and 4	1 wk	Mon 17.01.22	Fri 21.01.22	TE-VSC	Tests on cryo vac in sect 2B and 4																											
C02 Finement cavity upgrade	3 wks	Mon 24.01.22	Fri 11.02.22	SY-RF	C02 Finement cavity upgrade																											
C10 maintenance	4 wks	Mon 07.02.22	Fri 04.03.22	SY-RF	C10 maintenance																											

TBC, depending on impact