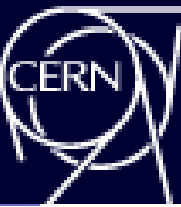




AD FACILITY



Technical Coordination Meeting

YETS works follow up



ANTIMATTER
FACTORY





AD ring - general



Planning is at [AD/ELENA planning](#)

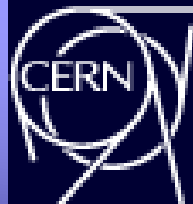
<https://oss-coordination.web.cern.ch/gantt/latest?facilities=AD/ELENA&scale=week&worktypeproject=>

Task Name	Duration	Start	Finish	Groups	Nov '21							Dec '21				Jan '22				Feb '22				Mar '22			
					44	45	46	47	48	49	50	51	52	1	2	3	4	5	6	7	8	9	10	11			
YETS 21-22	92 days?	Mon 15.11.21	Tue 05.04.22		S 21-22																						
AD ring	70 days	Mon 15.11.21	Fri 04.03.22		AD ring																						
Consignation - Lock-out	0.5 days	Mon 15.11.21	Mon 15.11.21	TE-EPC	Consignation - Lock-out																						
Cabling BTV	2 days	Wed 19.01.22	Thu 20.01.22	EN-EL	Cabling BTV																						
Cabling septa SMI/SME	1 day	Fri 21.01.22	Fri 21.01.22	EN-EL	Cabling septa SMI/SME																						
Cabling interlock doors/vac	2 days	Mon 24.01.22	Tue 25.01.22	EN-EL	Cabling interlock doors/vac																						
Decabling racks bdg 370	1 day	Wed 26.01.22	Wed 26.01.22	EN-EL	Decabling racks bdg 370																						
Magnet covers installation	2 wks	Mon 22.11.21	Fri 03.12.21	TE-MSC	Magnet covers installation																						
Tests on cryo vac in sect 2B and 4	1 wk	Mon 17.01.22	Fri 21.01.22	TE-VSC	Tests on cryo vac in sect 2B and 4																						
C02 Finement cavity upgrade	3 wks	Mon 24.01.22	Fri 11.02.22	SY-RF	C02 Finement cavity upgrade																						
C10 maintenance	4 wks	Mon 07.02.22	Fri 04.03.22	SY-RF	C10 maintenance																						

Decabling of left overs from LS2: postponed till next YETS (incompatible with Vac activities on the slot possible for EN-EL)



AD KFI repair



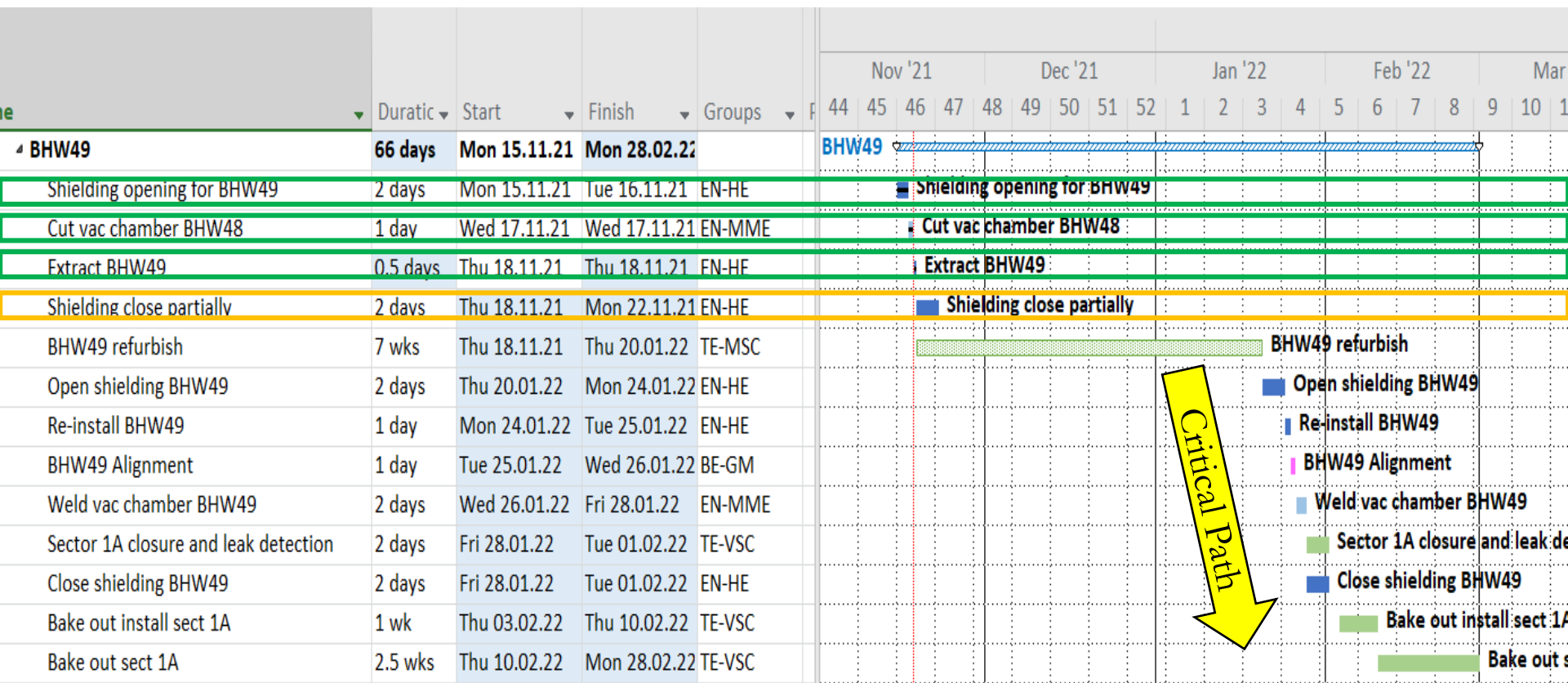
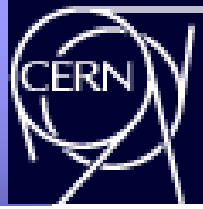
Name	Duratic	Start	Finish	Groups	Nov '21				Dec '21				Jan '22				Feb '22			
					44	45	46	47	48	49	50	51	52	1	2	3	4	5	6	7
AD Sect 1A	67.5 days	Mon 15.11.21	Wed 02.03.22		Sect 1A															
Sector 1A venting	1 day	Mon 15.11.21	Mon 15.11.21	TE-VSC	Sector 1A venting															
KFI repair	40 days	Mon 15.11.21	Mon 24.01.22		FI repair															
KFI measurement	1 day	Mon 15.11.21	Tue 16.11.21	BE-GM	KFI measurement															
KFI investigations	1 wk	Mon 15.11.21	Mon 22.11.21	SY-ABT	KFI investigations															
Shielding opening	2 days	Mon 22.11.21	Wed 24.11.21	EN-HE	Shielding opening															
KFI56 extraction	1 day	Wed 24.11.21	Thu 25.11.21	EN-HE	KFI56 extraction															
KFI56 repair	6 wks	Thu 25.11.21	Thu 20.01.22	SY-ABT	KFI56 repair															
KFI56 re-installation	1 day	Thu 20.01.22	Fri 21.01.22	EN-HE	KFI56 re-installation															
KFI alignment	1 day	Fri 21.01.22	Mon 24.01.22	BE-G	KFI alignment															

TBC !

News from KFI issues investigations:
See Vasco's talk



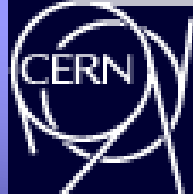
AD Magnet BHW49



Details: See Bruno's talk



AD QDS01 magnet

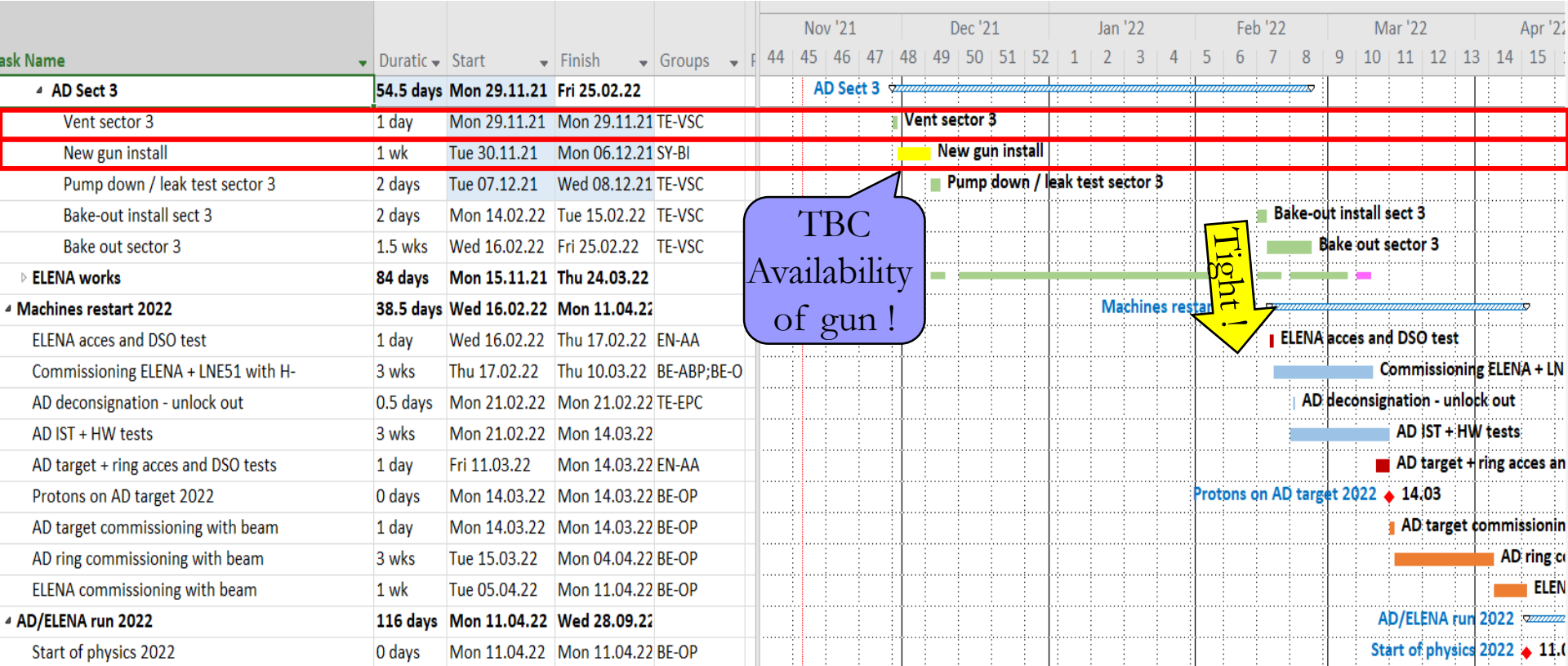


Name	Duratic	Start	Finish	Groups	Nov '21		Dec '21		Jan '22		Feb '22											
					44	45	46	47	48	49	50	51	52	1	2	3	4	5	6	7	8	9
QDS01	44.5 days	Mon 22.11.21	Fri 04.02.22		QDS01																	
Vent line 7000	0.5 days	Mon 22.11.21	Mon 22.11.21	TE-VSC	Vent line 7000																	
Remove beam pipe section	0.5 days	Mon 22.11.21	Mon 22.11.21	TE-VSC	Remove beam pipe section																	
Extraction tooling install	1 day	Tue 23.11.21	Tue 23.11.21	EN-HE	Extraction tooling install																	
Shielding opening	2 days	Mon 22.11.21	Wed 24.11.21	EN-HE	Shielding opening																	
Extract QDS01	1 day	Thu 25.11.21	Fri 26.11.21	EN-HE	Extract QDS01																	
Refurbish QDS01	7 wks	Fri 26.11.21	Fri 28.01.22	TE-MS	Refurbish QDS01																	
Re-install QDS01	1 day	Fri 28.01.22	Mon 31.01.22	EN-HE	Re-install QDS01																	
QDS01 alignment	1 day	Mon 31.01.22	Tue 01.02.22	BE-GM	QDS01 alignment																	
QDS01 Shielding closing	2 days	Tue 01.02.22	Thu 03.02.22	EN-HE	QDS01 Shielding closing																	
Pump down line 7000	1 day	Thu 03.02.22	Fri 04.02.22	TE-VSC	Pump down line 7000																	

Critical Path



Sect 3: AD e-cooler

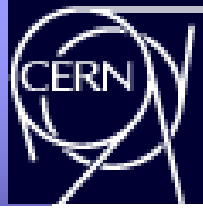


TBC
Availability
of gun !

Tight!



ELENA works



Task Name	Duration	Start	Finish	Groups	Nov '21				Dec '21				Jan '22				Feb '22			
					44	45	46	47	48	49	50	51	52	1	2	3	4	5	6	7
ELENA works	84 days	Mon 15.11.21	Thu 24.03.22		A works															
Measurement of lines	2 wks	Mon 15.11.21	Fri 26.11.21	BE-GM	Measurement of lines															
Update of ISEG cards	3 days	Mon 22.11.21	Wed 24.11.21	SY-EPC	Update of ISEG cards															
Ion source maintenance	6 wks	Mon 29.11.21	Fri 21.01.22	BE-ABP	Ion source maintenance															
Tests on the source spare HV transformer	1 wk	Mon 24.01.22	Fri 28.01.22	TE-EPC	Tests on the source															
WIC update (TBC)	1 day	Mon 17.01.22	Mon 17.01.22		WIC update (TBC)															
LNE51 connect to LNE50	84 days	Mon 15.11.21	Thu 24.03.22		LNE50															
Vent LNE50 + remove beam pipe + TBS	1 day	Mon 15.11.21	Mon 15.11.21	SY-STI;TE-VS	Vent LNE50 + remove beam pipe + TBS															
Swap ZQNA5050	1 day	Thu 18.11.21	Thu 18.11.21		Swap ZQNA5050															
Install ZDF+ ZDS + support	3 days	Mon 29.11.21	Wed 01.12.21	SY-ABT;TE-VS	Install ZDF+ ZDS + support															
Align ZDF + ZDS + ZQNA5050	2 days	Thu 02.12.21	Fri 03.12.21	BE-GM	Align: ZDF + ZDS + ZQNA5050															
SEM 5125 + 5140 install	1 day	Mon 06.12.21	Mon 06.12.21	SY-BI;TE-VSC	SEM 5125 + 5140 install															
Vac connect + Leak detection	2 days	Tue 07.12.21	Wed 08.12.21	TE-VSC	Vac connect + Leak detection															

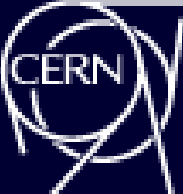
New !

Delayed:
see Antti's talk

News from repaired SEM
vac acceptance tests ?

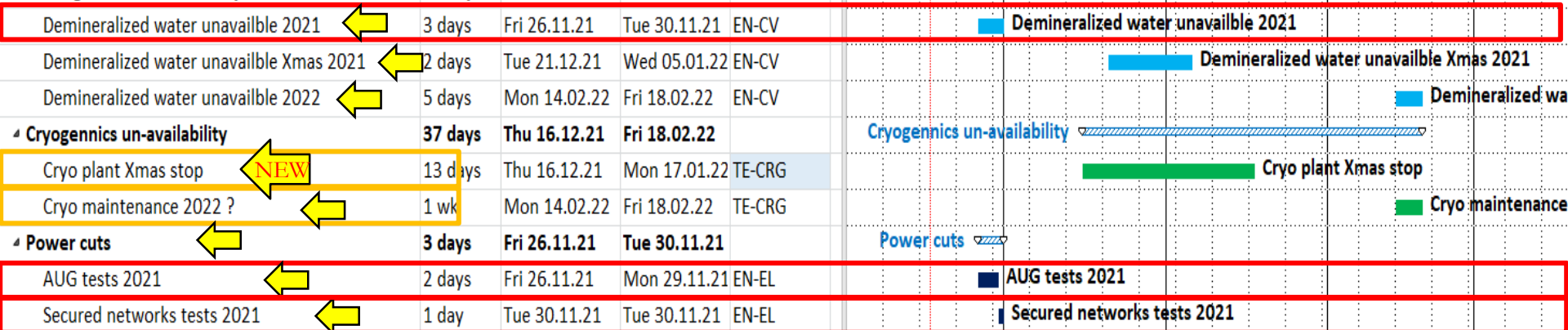
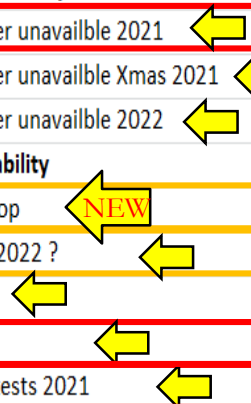


Service disruptions



Task Name	Duratic	Start	Finish	Groups	Nov '21			Dec '21			Jan '22			Feb '22			Mar '22					
					44	45	46	47	48	49	50	51	52	1	2	3	4	5	6	7	8	9
4 Cooling water un-availability	51 days	Fri 26.11.21	Fri 18.02.22		r un-availability																	
Demineralized water unavailble 2021	3 days	Fri 26.11.21	Tue 30.11.21	EN-CV	Demineralized water unavailble 2021																	
Demineralized water unavailble Xmas 2021	2 days	Tue 21.12.21	Wed 05.01.22	EN-CV	Demineralized water unavailble Xmas 2021																	
Demineralized water unavailble 2022	5 days	Mon 14.02.22	Fri 18.02.22	EN-CV	Demineralized wa																	
4 Cryogennics un-availability	37 days	Thu 16.12.21	Fri 18.02.22		Cryogennics un-availability																	
Cryo plant Xmas stop	13 days	Thu 16.12.21	Mon 17.01.22	TE-CRG	Cryo plant Xmas stop																	
Cryo maintenance 2022 ?	1 wk	Mon 14.02.22	Fri 18.02.22	TE-CRG	Cryo maintenance																	
4 Power cuts	3 days	Fri 26.11.21	Tue 30.11.21		Power cuts																	
AUG tests 2021	2 days	Fri 26.11.21	Mon 29.11.21	EN-EL	AUG tests 2021																	
Secured networks tests 2021	1 day	Tue 30.11.21	Tue 30.11.21	EN-EL	Secured networks tests 2021																	
Ramp refurbishment	6 wks	Fri 17.06.22	Thu 28.07.22	SCE-SAM																		
ELENA side crane maintenance + PUMA alim	8 wks	Tue 19.04.22	Thu 16.06.22	EN-HE																		

NEW



- Need to better check for possible interferences of planning (common space needs, crane usage etc...)
- Propose experiments to present their planned YETS activities in upcoming ADTC meetings
- Details, planning of presentations TBD
- GBAR and PUMA agreed on 2nd Dec