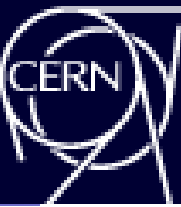




# AD FACILITY



## Technical Coordination Meeting

**YETS works follow up**

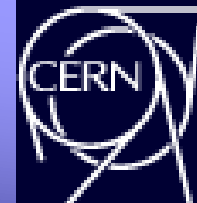


ANTIMATTER  
FACTORY



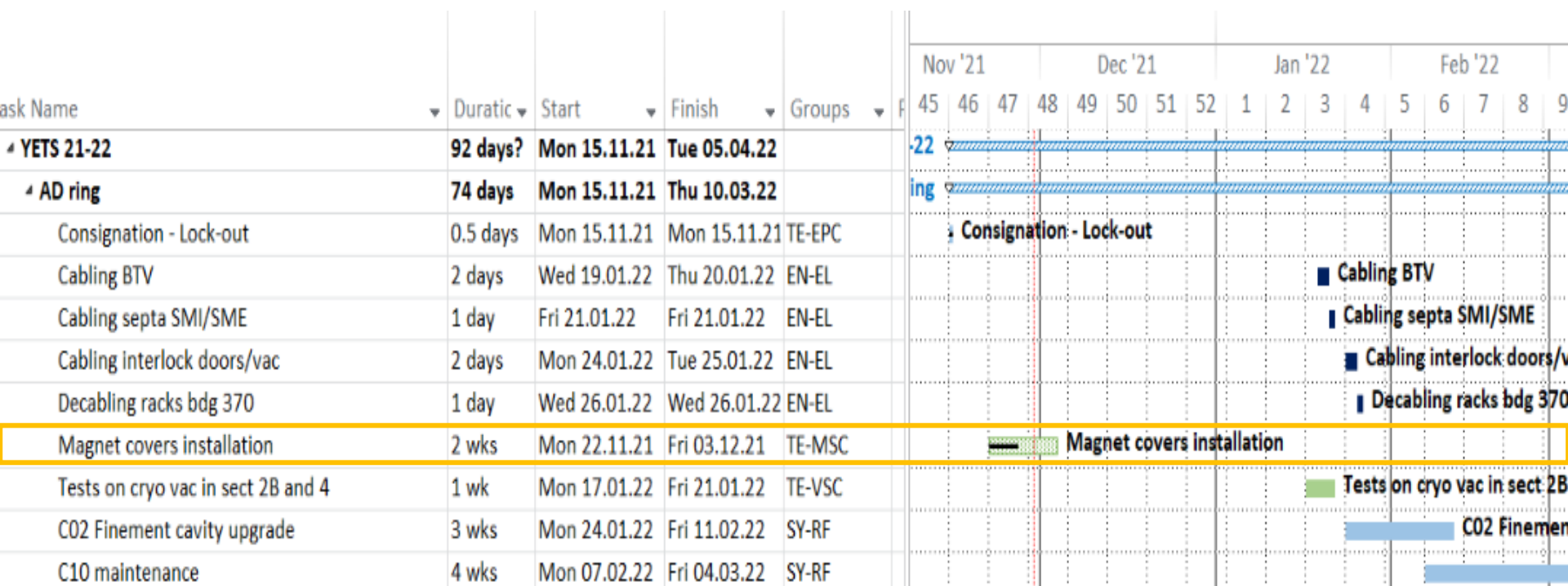


# AD ring - general



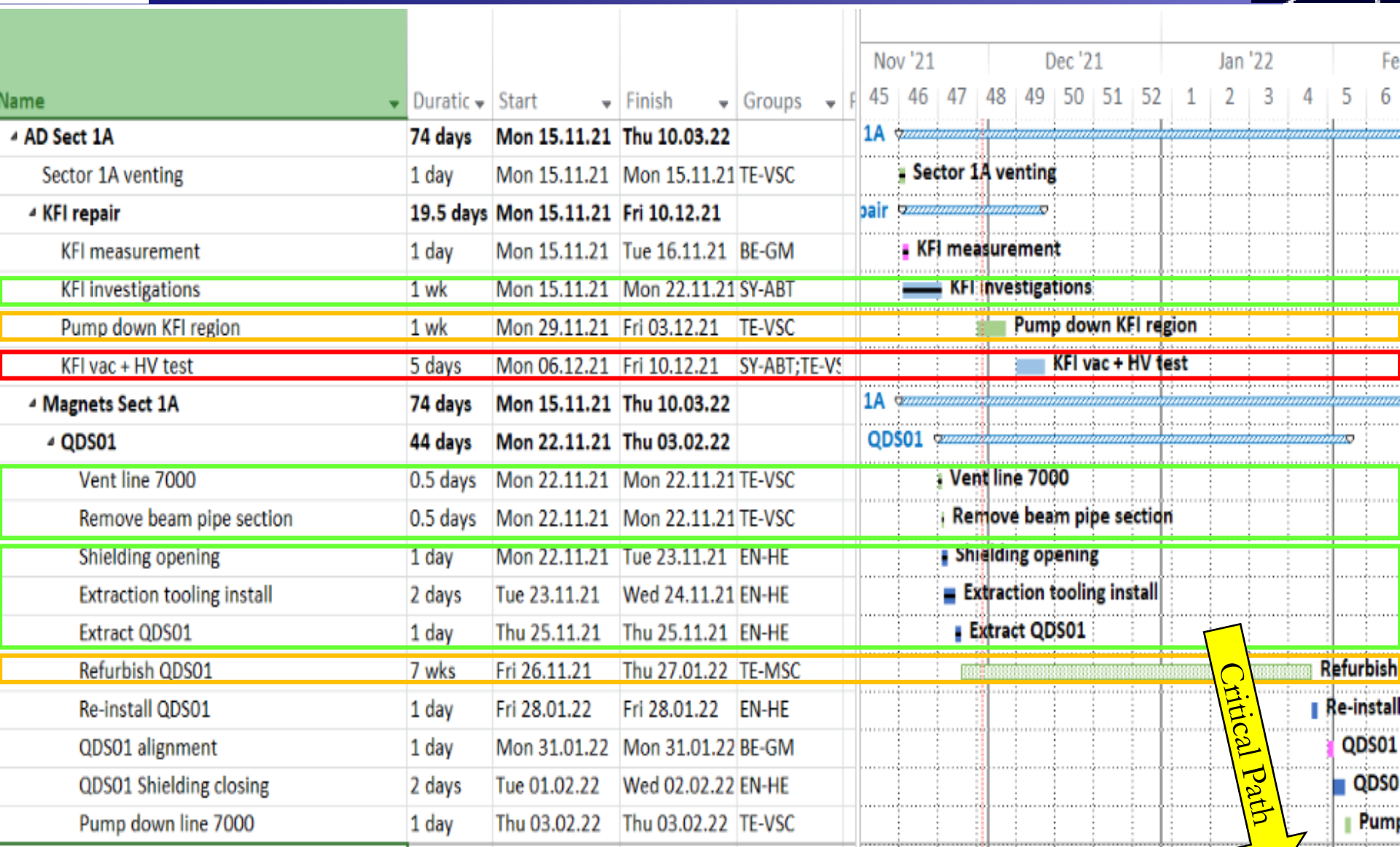
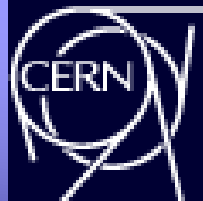
Planning is at [AD/ELENA planning](https://oss-coordination.web.cern.ch/gantt/latest?facilities=AD/ELENA&scale=week&worktypeproject=)

<https://oss-coordination.web.cern.ch/gantt/latest?facilities=AD/ELENA&scale=week&worktypeproject=>





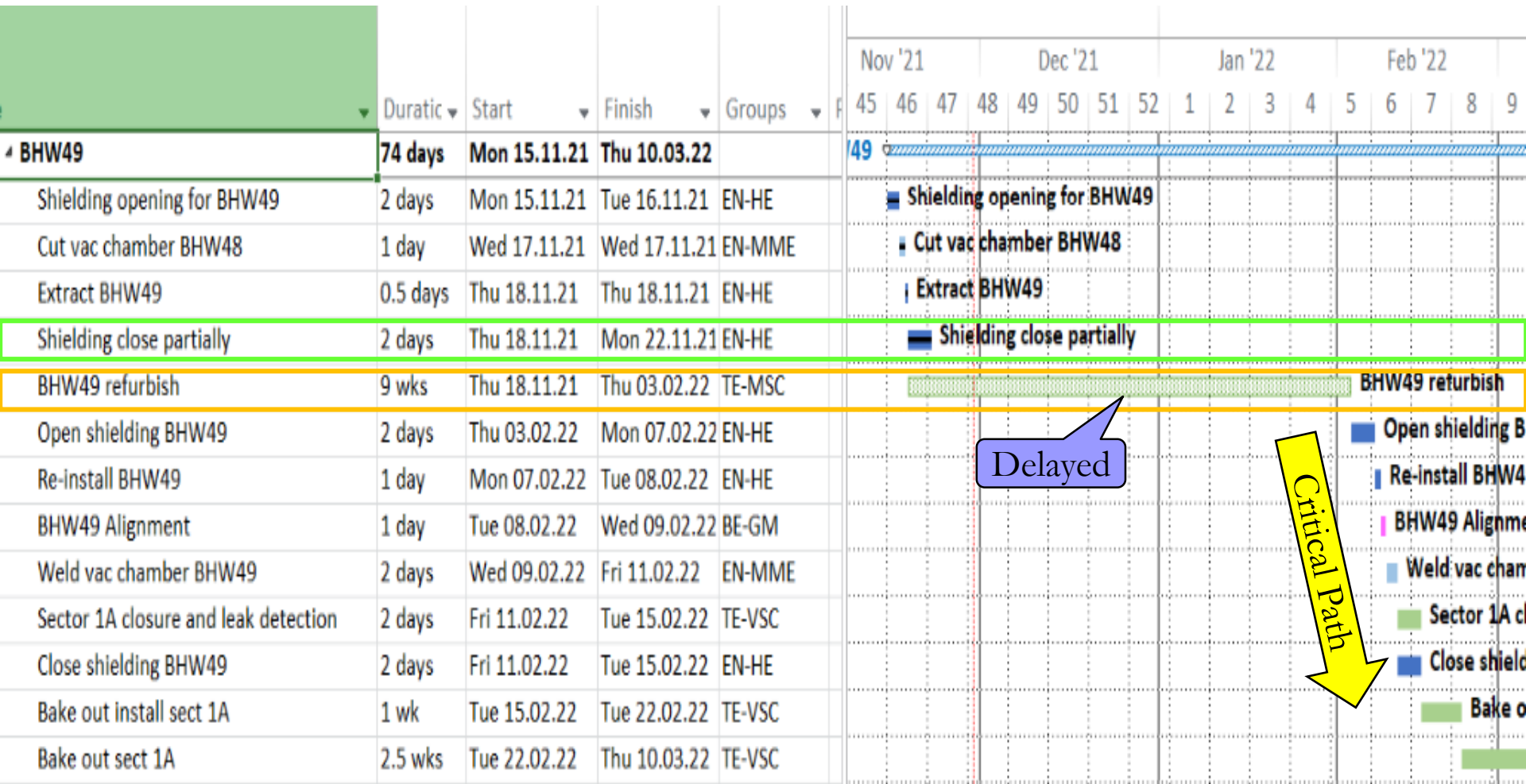
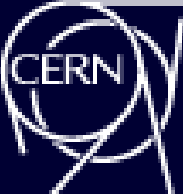
# AD KFI repair



Critical Path

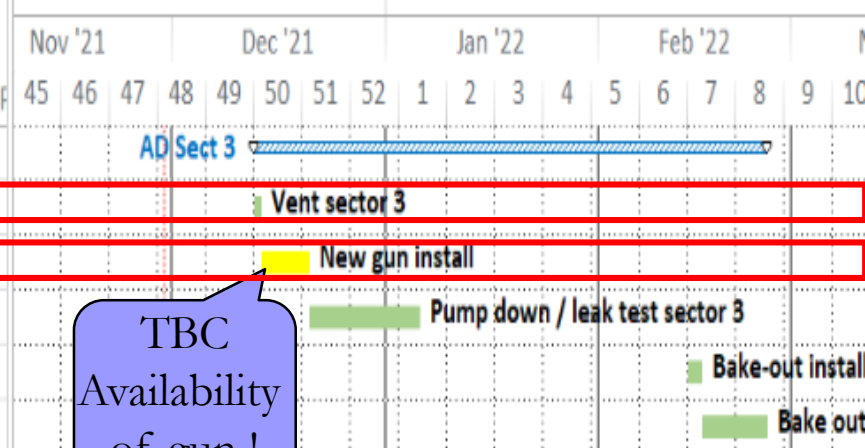


# AD Magnet BHW49



# Sect 3: AD e-cooler

Name	Duratic	Start	Finish	Groups
AD Sect 3	44.5 days	Mon 13.12.21	Fri 25.02.22	
Vent sector 3	1 day	Mon 13.12.21	Mon 13.12.21	TE-VSC
New gun install	1 wk	Tue 14.12.21	Mon 20.12.21	SY-BI
Pump down / leak test sector 3	2 days	Tue 21.12.21	Wed 05.01.22	TE-VSC
Bake-out install sect 3	2 days	Mon 14.02.22	Tue 15.02.22	TE-VSC
Bake out sector 3	1.5 wks	Wed 16.02.22	Fri 25.02.22	TE-VSC



TBC  
Availability  
of gun !



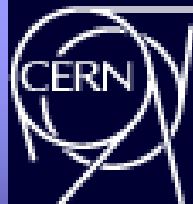
# ELENA works



Name	Duratic	Start	Finish	Groups	Nov '21	Dec '21	Jan '22										
					45	46	47	48	49	50	51	52	1	2	3	4	5
<b>ELENA works</b>	<b>79 days</b>	<b>Mon 15.11.21</b>	<b>Thu 17.03.22</b>		[Timeline bars for ELENA works]												
Measurement of lines	2 wks	Mon 15.11.21	Fri 26.11.21	BE-GM	[Measurement of lines bar]												
Update of ISEG cards	3 days	Mon 22.11.21	Wed 24.11.21	SY-EPC	[Update of ISEG cards bar]												
Ion source maintenance	6 wks	Mon 29.11.21	Fri 21.01.22	BE-ABP	[Ion source maintenance bar]												
Tests on the source spare HV transformer	1 wk	Mon 24.01.22	Fri 28.01.22	TE-EPC	[Tests on the source spare HV transformer bar]												
WIC update (TBC)	1 day	Mon 17.01.22	Mon 17.01.22		[WIC update bar]												
<b>LNE51 connect to LNE50</b>	<b>79 days</b>	<b>Mon 15.11.21</b>	<b>Thu 17.03.22</b>		[Timeline bars for LNE51 connect to LNE50]												
Vent LNE50 + remove beam pipe + TBS	1 day	Mon 15.11.21	Mon 15.11.21	SY-STI;TE-VSC	[Vent LNE50 + remove beam pipe + TBS bar]												
Swap ZQNA5050	1 day	Thu 18.11.21	Thu 18.11.21		[Swap ZQNA5050 bar]												
Install supports ZDF+ZDS	3 days	Mon 29.11.21	Wed 01.12.21	SY-ABT;TE-VSC	[Install supports ZDF+ZDS bar]												
SEM 5125 + 5140 install	1 day	Mon 13.12.21	Mon 13.12.21	SY-BI;TE-VSC	[SEM 5125 + 5140 install bar]												
Align LNE51 + ZQNA5050	2 days	Tue 14.12.21	Wed 15.12.21	BE-GM	[Align LNE51 + ZQNA5050 bar]												
Vac connect + Leak detection	2 days	Thu 16.12.21	Fri 17.12.21	TE-VSC	[Vac connect + Leak detection bar]												
Install BO equip	1 wk	Mon 14.02.22	Fri 18.02.22	TE-VSC	[Install BO equip bar]												
LNE51 + LNE50 Bake-out	2 wks	Mon 21.02.22	Fri 04.03.22	TE-VSC	[LNE51 + LNE50 Bake-out bar]												
LNE51 Smoothing	3 days	Mon 07.03.22	Wed 09.03.22	BE-GM	[LNE51 Smoothing bar]												
Connect cables	1 day	Thu 10.03.22	Thu 10.03.22	SY-ABT	[Connect cables bar]												
Power converters commissioning	0.5 wks	Fri 11.03.22	Tue 15.03.22	TE-EPC	[Power converters commissioning bar]												
Control / Software commissioning	0.5 wks	Tue 15.03.22	Thu 17.03.22	BE-CO;BE-OP	[Control / Software commissioning bar]												



# Service disruptions



Task Name	Duratic	Start	Finish	Groups	Nov '21	Dec '21	Jan '22	Feb '22	Mar '22		
<b>Cooling water un-availability</b>	<b>51 days</b>	<b>Fri 26.11.21</b>	<b>Fri 18.02.22</b>		r un-availability						
Demineralized water unavailble 2021	3 days	Fri 26.11.21	Tue 30.11.21	EN-CV		Demineralized water unavailble 2021					
Demineralized water unavailble Xmas 2021	2 days	Tue 21.12.21	Wed 05.01.22	EN-CV			Demineralized water unavailble Xmas 2021				
Demineralized water unavailble 2022	5 days	Mon 14.02.22	Fri 18.02.22	EN-CV				Demineralized wa			
<b>Cryogennics un-availability</b>	<b>37 days</b>	<b>Thu 16.12.21</b>	<b>Fri 18.02.22</b>		Cryogennics un-availability						
Cryo plant Xmas stop	13 days	Thu 16.12.21	Mon 17.01.22	TE-CRG		Cryo plant Xmas stop					
Cryo maintenance 2022 ?	1 wk	Mon 14.02.22	Fri 18.02.22	TE-CRG				Cryo maintenance			
<b>Power cuts</b>	<b>3 days</b>	<b>Fri 26.11.21</b>	<b>Tue 30.11.21</b>		Power cuts						
AUG tests 2021	2 days	Fri 26.11.21	Mon 29.11.21	EN-EL		AUG tests 2021					
Secured networks tests 2021	1 day	Tue 30.11.21	Tue 30.11.21	EN-EL		Secured networks tests 2021					
<b>Ramp refurbishment</b>	<b>6 wks</b>	<b>Fri 17.06.22</b>	<b>Thu 28.07.22</b>	SCE-SAM							
<b>ELENA side crane maintenance + PUMA alim</b>	<b>8 wks</b>	<b>Tue 19.04.22</b>	<b>Thu 16.06.22</b>	EN-HE							

NEW

TBC