



Enabling Grids for E-science

## gLite Basic APIs

Christos Filippidis

([filippidis@inp.demokritos.gr](mailto:filippidis@inp.demokritos.gr))

Application Support Team

NCSR “Demokritos”, Institute of Nuclear Physics

[www.eu-egee.org](http://www.eu-egee.org)



Information Society



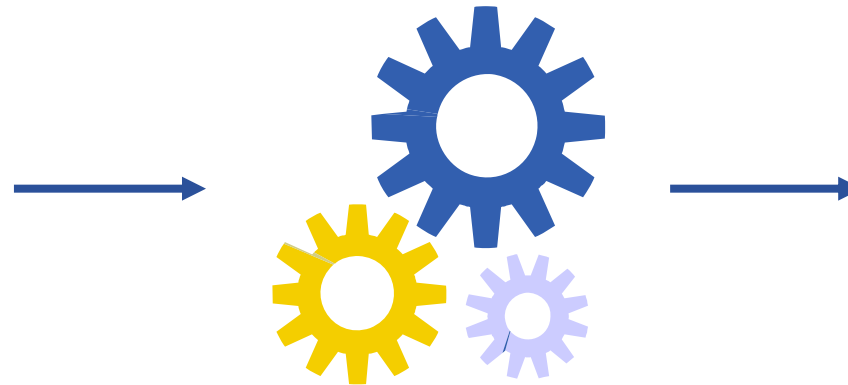
- Application definition
- Environment configuration
- Information discovery
- Data management
- Program definition
- Program execution
- Summary

- Application definition
- Environment configuration
- Information discovery
- Data management
- Program definition
- Program execution
- Summary

## Image Compression



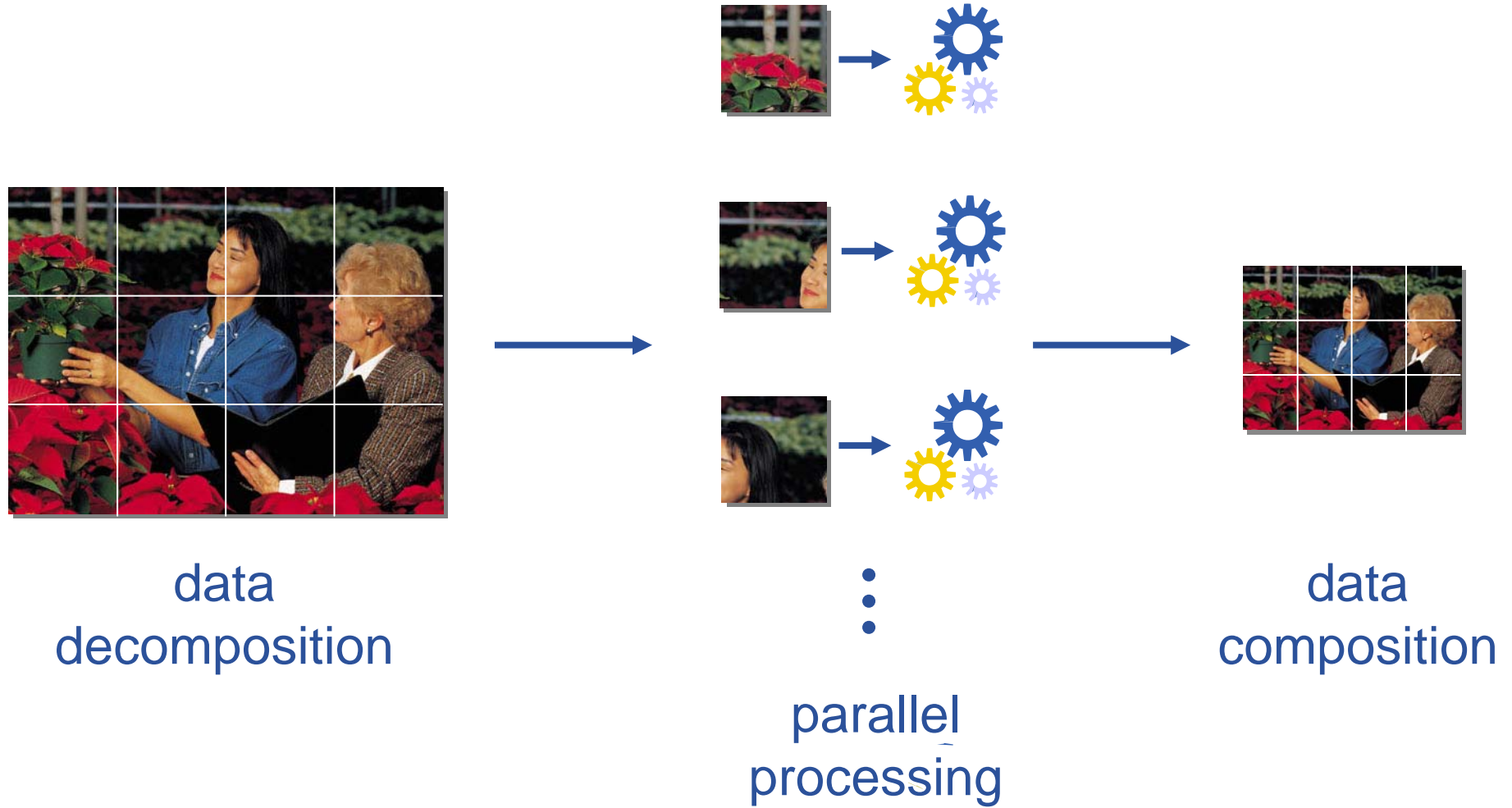
original  
image



compression  
algorithm



compressed  
image

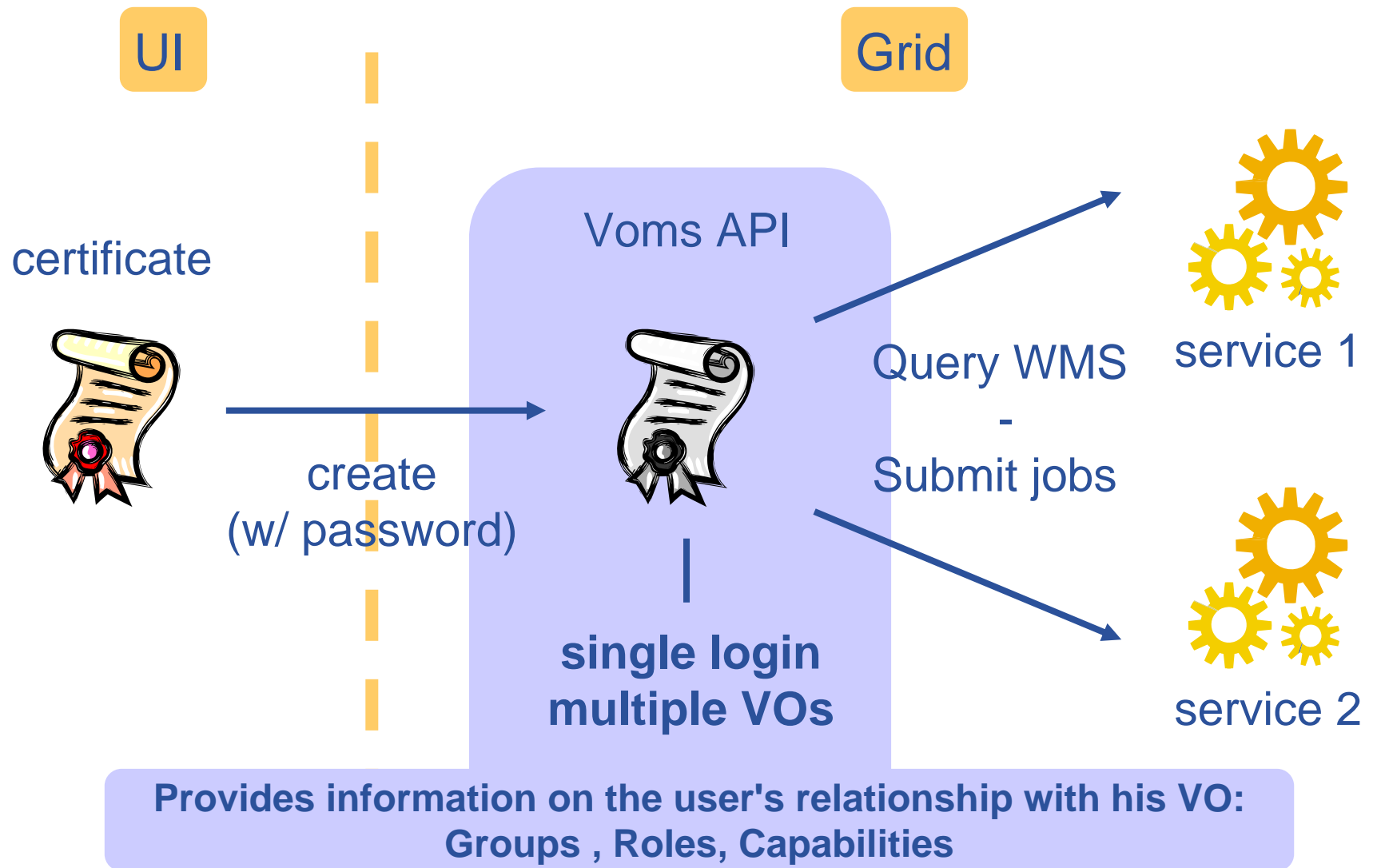


data  
decomposition

⋮  
parallel  
processing

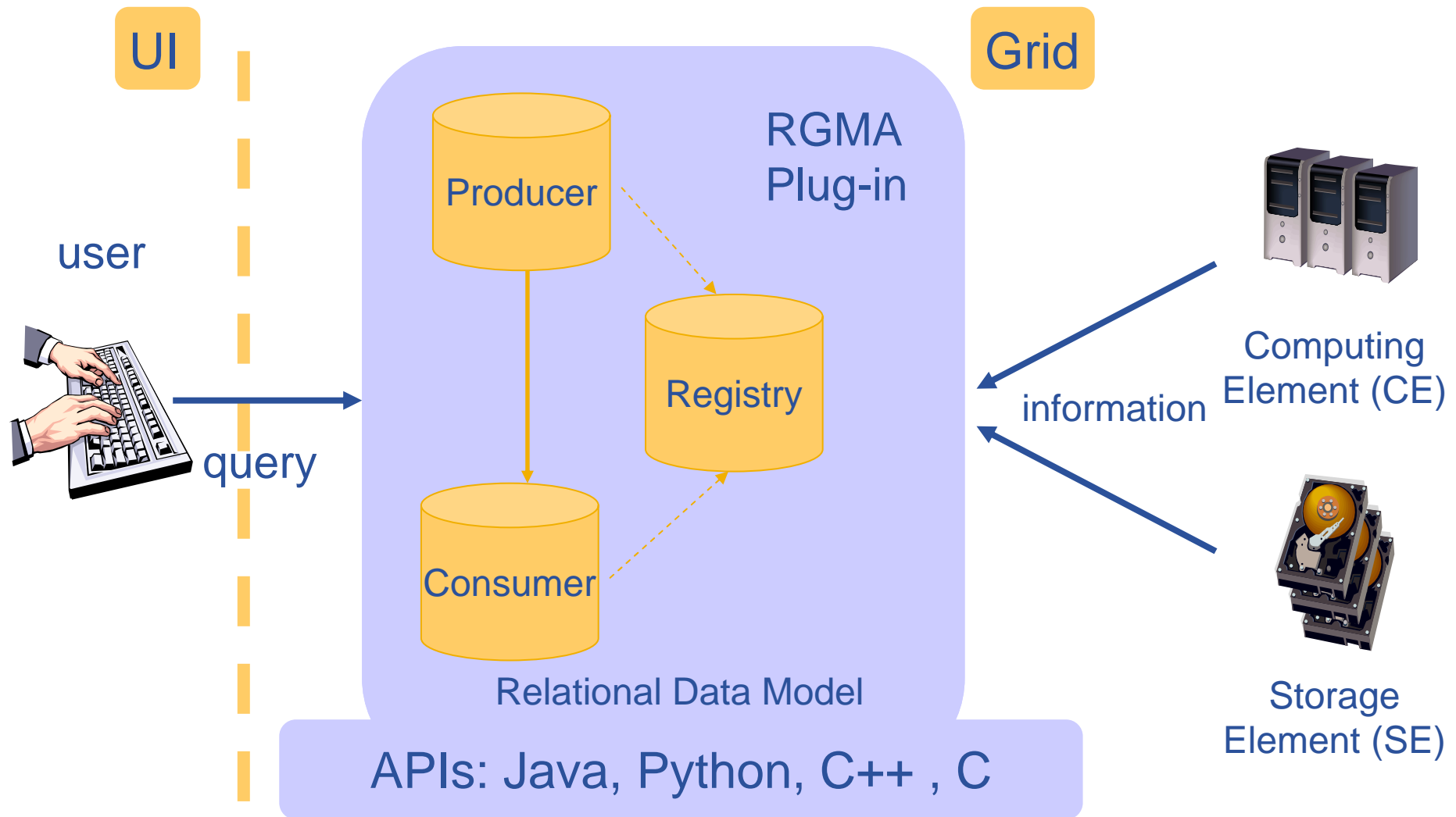
data  
composition

- Application definition
- Environment configuration
- Information discovery
- Data management
- Program definition
- Program execution
- Summary

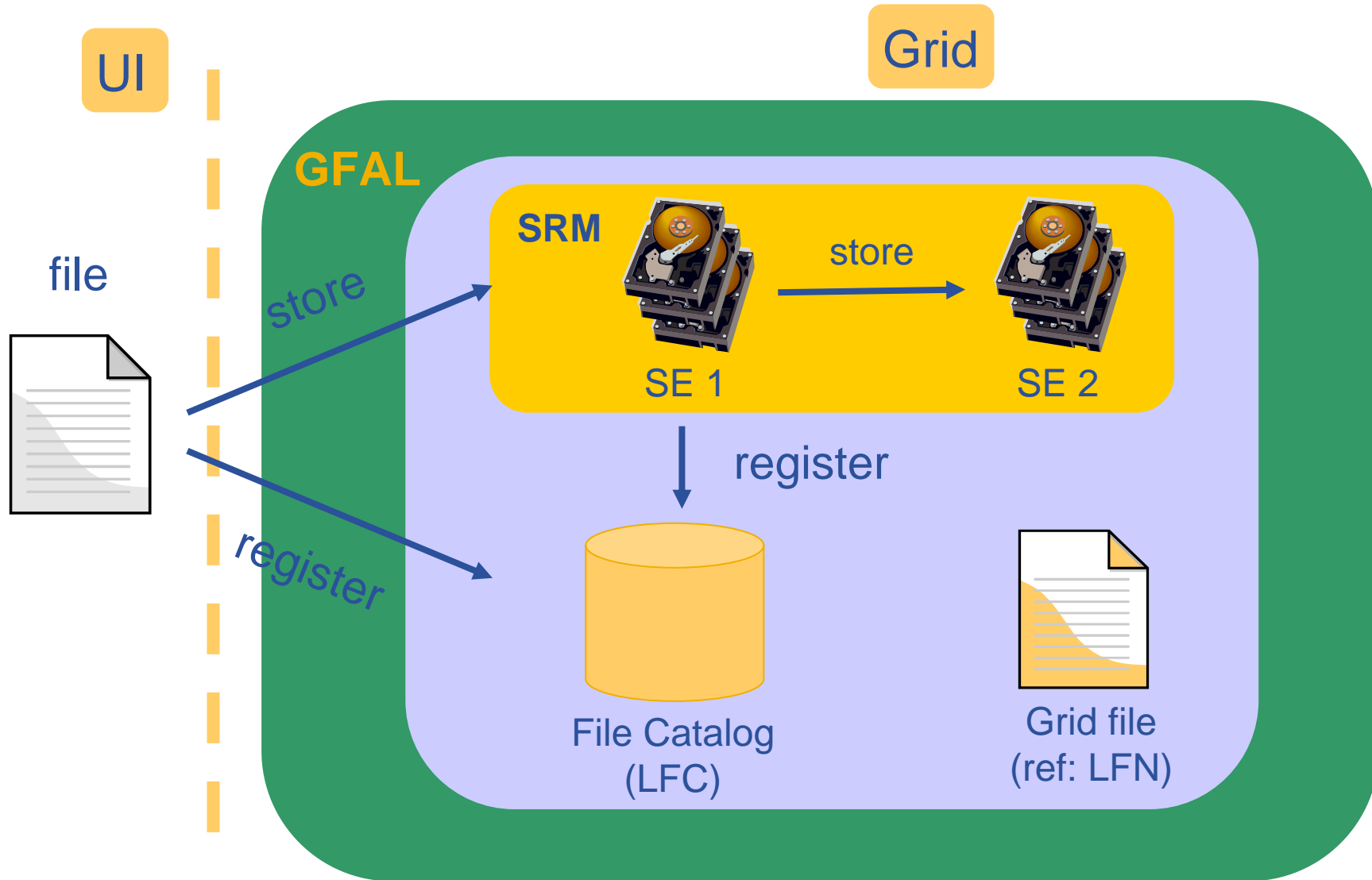


- Application definition
- Environment configuration
- Information discovery
- Data management
- Program definition
- Program execution
- Summary



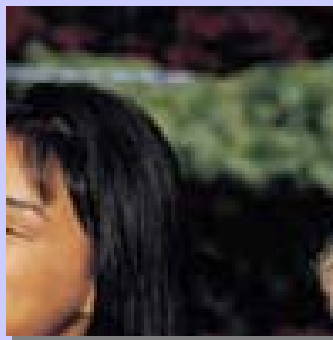


- Application definition
- Environment configuration
- Information discovery
- Data management
- Program definition
- Program execution
- Summary

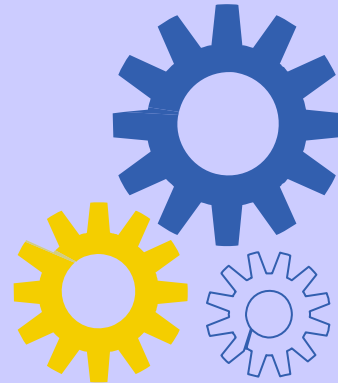


- Application definition
- Environment configuration
- Information discovery
- Data management
- Program definition
- Program execution
- Summary

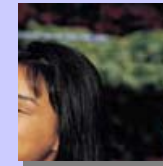
## Job Description Language (JDL)



original  
input data  
sub-image

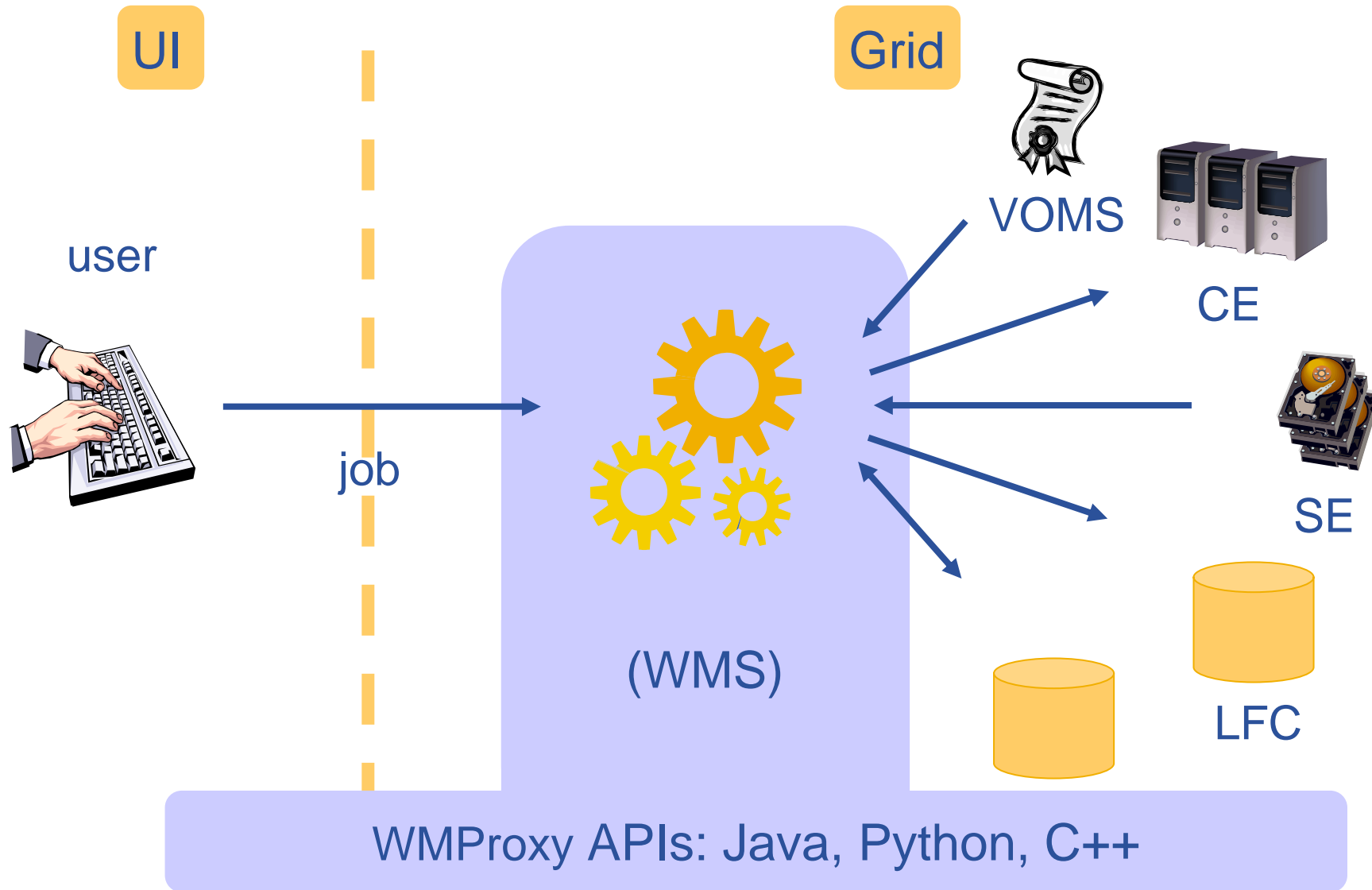


compression  
program  
algorithm



compressed  
output data  
sub-image

- Application definition
- Environment configuration
- Information discovery
- Data management
- Program definition
- Program execution
- Summary



- Application definition
- Environment configuration
- Information discovery
- Data management
- Program definition
- Program execution
- Summary



- Parallelize application
- Authenticate with VOMS API
- Get information with Service Discovery
- Data management with GFAL
- Execute application with WMS & WMSProxy API

- gLite Documentation  
- <http://glite.web.cern.ch/glite/documentation/>



Enabling Grids for E-science

## Questions?

Christos Filippidis

([filippidis@inp.demokritos.gr](mailto:filippidis@inp.demokritos.gr))

Application Support Team

NCSR “Demokritos”, Institute of Nuclear Physics

[www.eu-egee.org](http://www.eu-egee.org)



Information Society

