

T2Ds report

Guido Negri

ADC Weekly

22 Jan 2013

T2Ds degraded performances

- CA-VICTORIA-WESTGRID-T2 – decreasing performances for transfers FROM Tier1s
- IN2P3-LAPP – still not great perf. Some subscriptions open (~900). Network update foreseen by the end of March 2013
- INFN-ROMA1 – slightly bad transf rates TO Tier1s, ~1300 subs open!
- IFIC-LCG2 – slightly bad FROM T1 to T2, ~1300 subs open!
- NET2 – degraded in transf FROM Tier1s, ~1000 subs open
- RRC-KI – degraded mainly in transf TO Tier1s
- SWT2 _CPB – should improve transf FROM Tier1s
- NCG-INGRID-PT – perf affected by blacklisting (<https://savannah.cern.ch/support/index.php?134351>)

T2Ds improving since 4 Dec

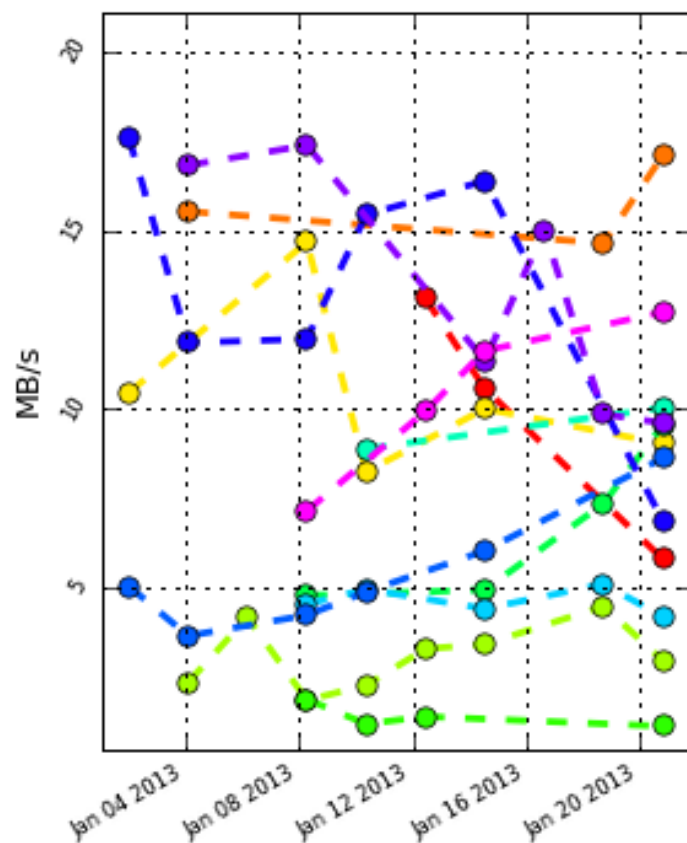
- CA-MCGILL-CLUMEQ-T2 – better perf after being connected to 10G LHCONE network, almost at T2D performances
- INFN-MILANO-ATLASC – should improve transf FROM T1s, investigations ongoing
- BEIJING-LCG2 – slightly improving
- UKI-SCOTGRID-ECDF – improved significantly after upgraded to 10Gbit/s link, back to T2D performances

Performance data

- Data used for this presentation can be seen at <http://gnegri.web.cern.ch/gnegri/T2D/t2dStats.html>
couples of numbers show (rate to T1/rate from T1)
- They come from the ATLAS dashboard
dashb-atlas-data.cern.ch

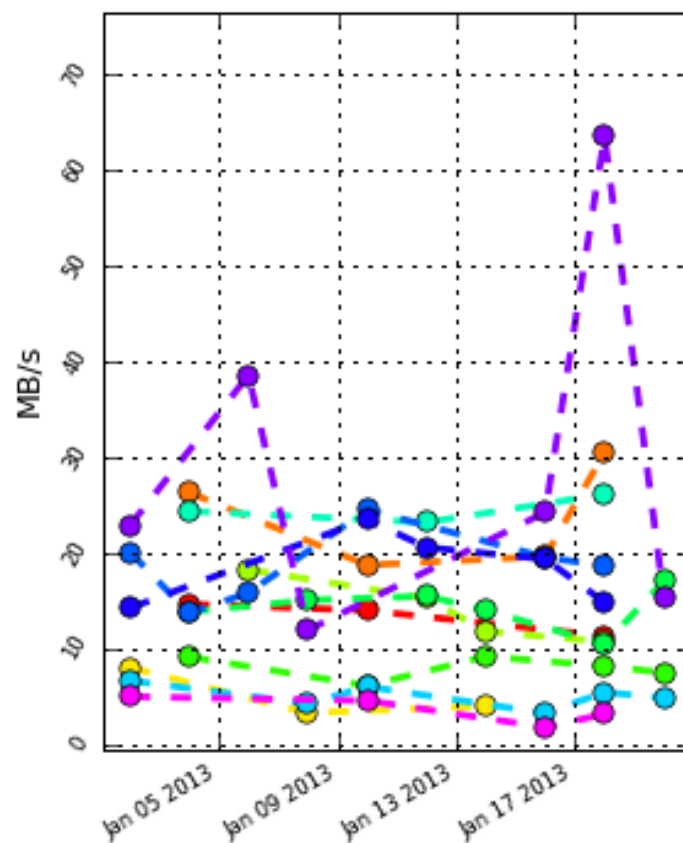
IFIC-LCG2

FTS transfer rates per file



from Tier1s

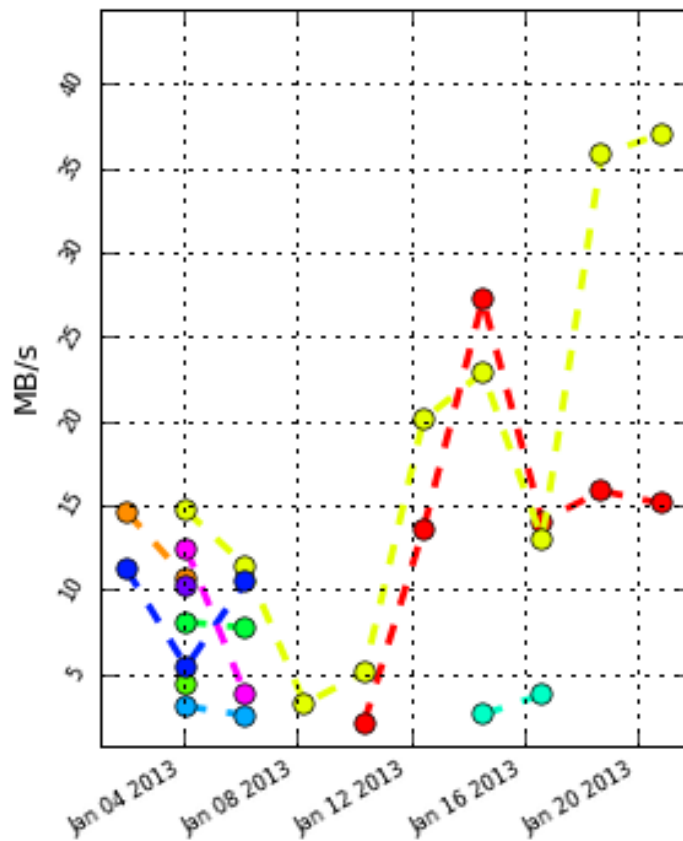
FTS transfer rates per file



to Tier1s

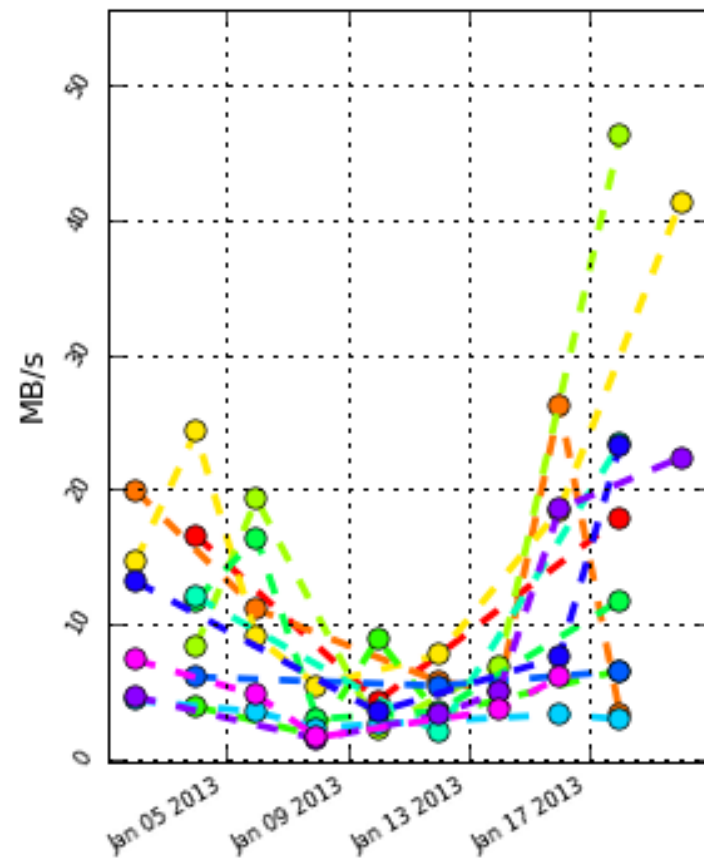
NET2

FTS transfer rates per file



from Tier1s

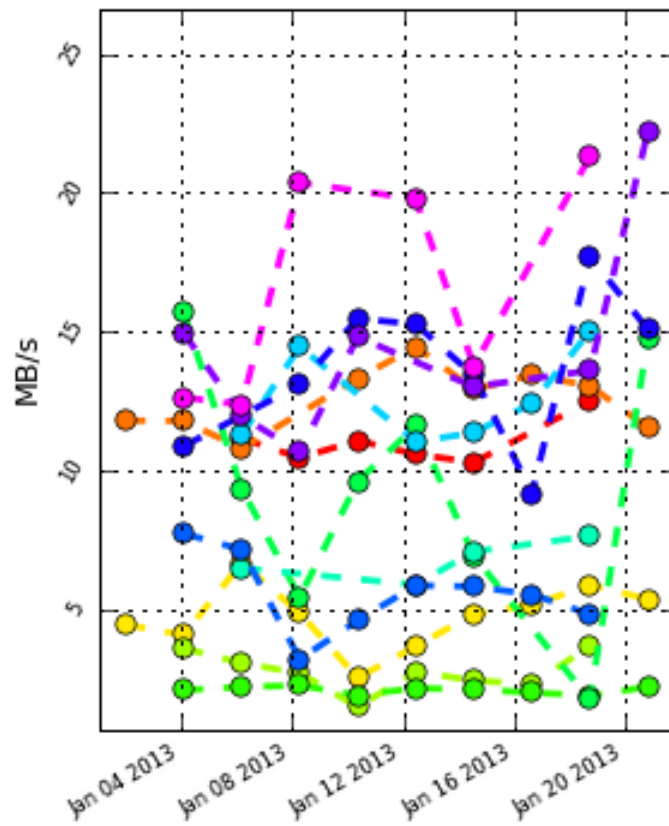
FTS transfer rates per file



to Tier1s

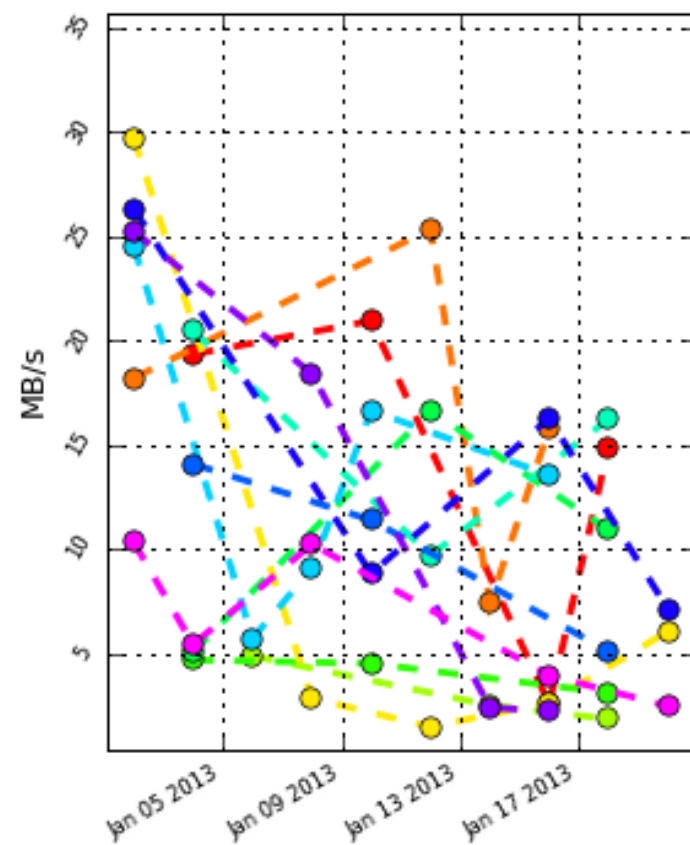
RRC-KI

FTS transfer rates per file



from Tier1s

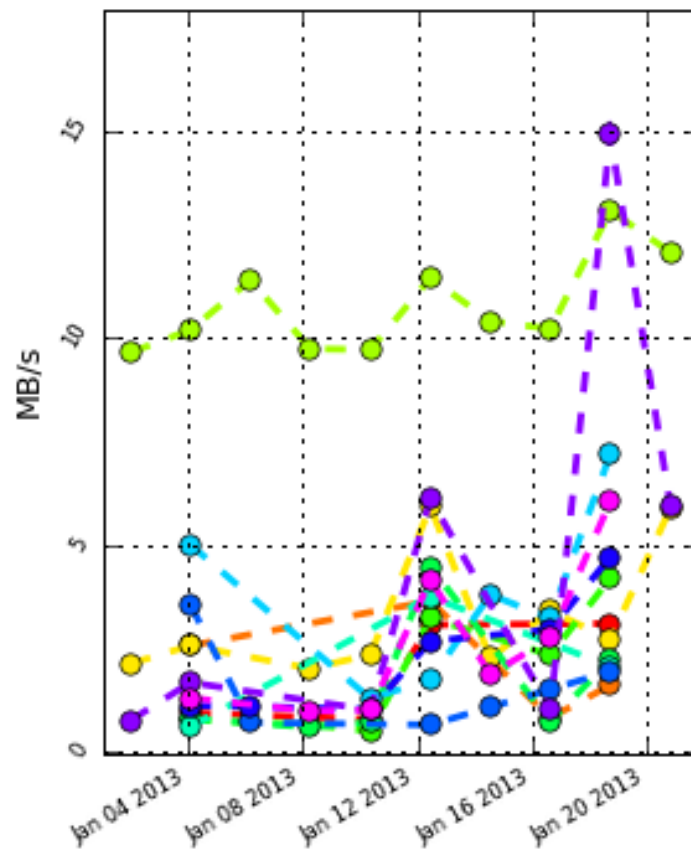
FTS transfer rates per file



to Tier1s

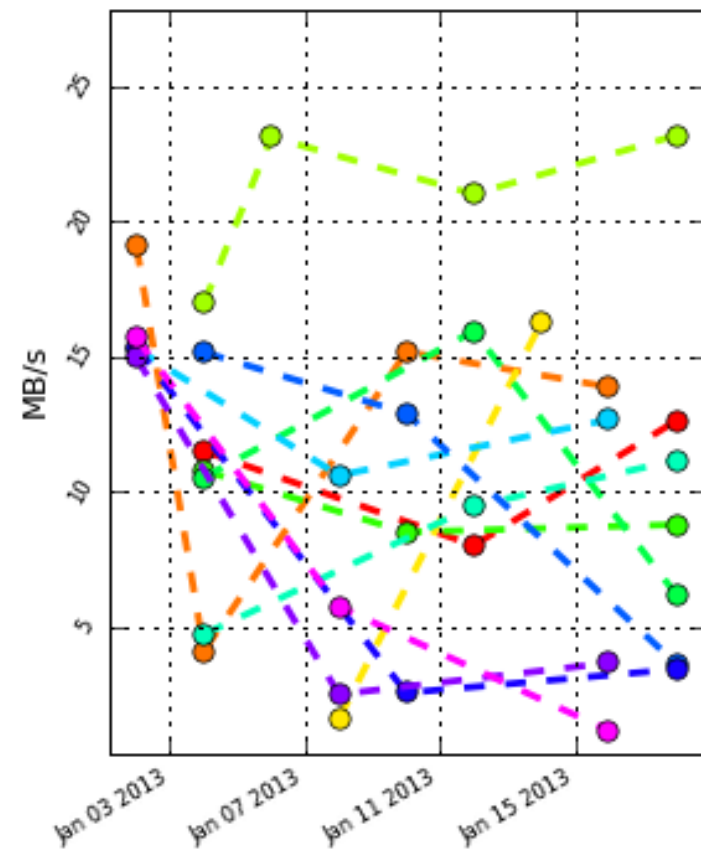
CA-ALBERTA-WESTGRID-T2

FTS transfer rates per file



from Tier1s

FTS transfer rates per file



to Tier1s

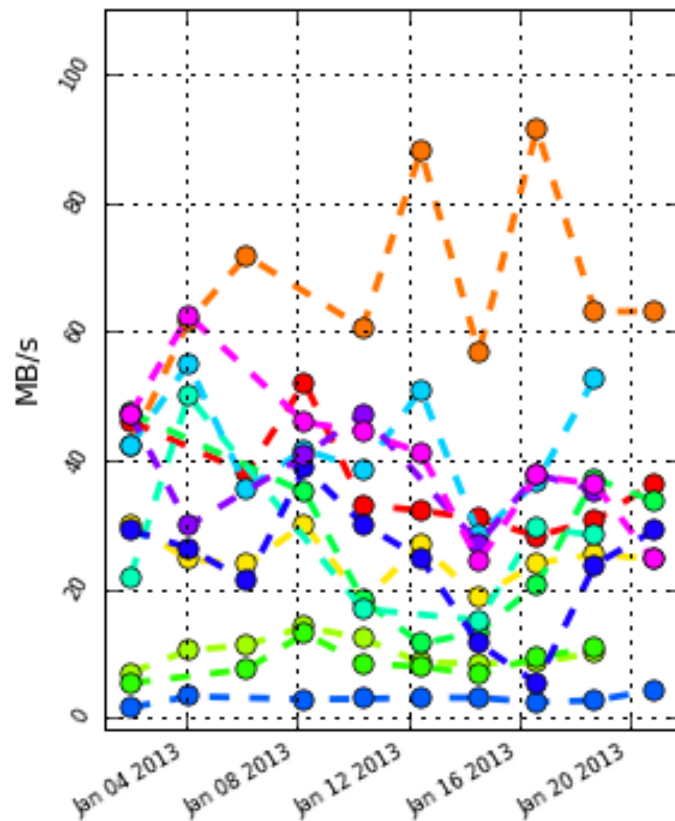
CA-ALBERTA-WESTGRID-T2

CA-ALBERTA-WESTGRID-T2	last week	week -1	week -2	week -3	week -4
TRIUMF-LCG2	20/9.7	18.8/9.7	15.8/11.6	12/12	10.8/5.5
INFN-T1	14.5/3.4	3.9/2.4	12.7/1.9	5.1/0.7	7.2/2
TAIWAN-LCG2	8.1/2	10.3/0.6	10.2/0.9	1.7/1.1	5.9/3.8
FZK-LCG2	12.1/1.7	10.1/4.8	14.6/0.5	34.6/13.7	7.4/4.7
PIC	3.5/5.5	2.4/1.6	14.3/0.9	7.2/1.1	17.1/4.2
BNL-OSG2	15.5/3.4	1.5/2.2	9.1/2.5	13.6/8.1	11.5/6.8
IN2P3-CC	2.5/1.9	14.6/1.1	4.8/0.7	4/0.9	2.8/3.4
NDGF-T1	1.1/3	5.5/1	14.9/0.8	11.6/0.9	4.9/6.4
NIKHEF-ELPROD	9/3.6	4.5/0.6	12.4/0.5	11.3/1.3	9/2.1
SARA-MATRIX	15.2/2.7	10/0.7	19.1/0.9	10.5/0.7	15.6/2.6
CERN-PROD	7.7/2.3	11/0.9	12.4/0.4	9.5/0.8	14.7/3.2
RAL-LCG2	12.3/0.8	14.5/2.9	14.8/0.5	11.6/2.1	15.7/2.7

numbers are
T2->T1 / T1->T2

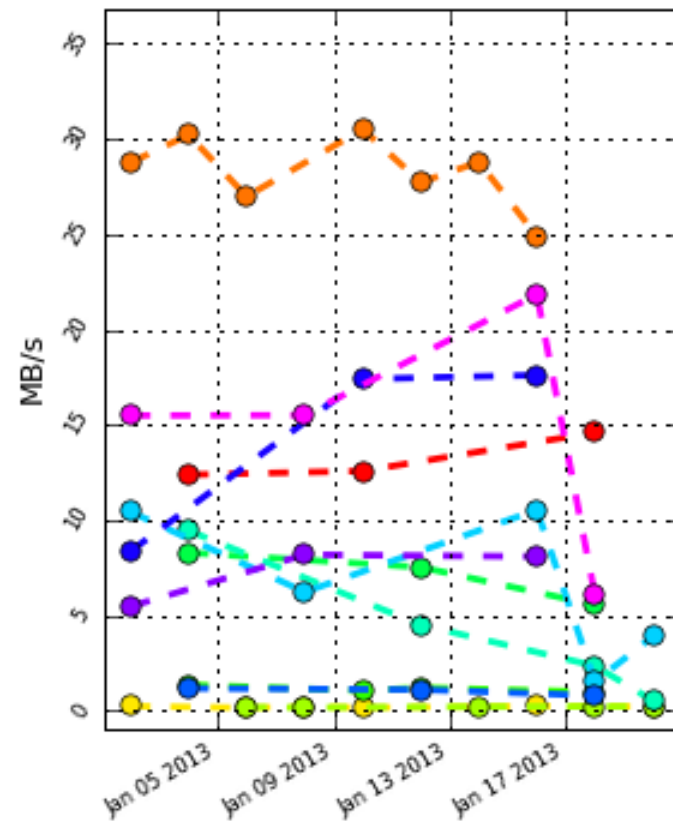
INFN-ROMA1

FTS transfer rates per file



from Tier1s

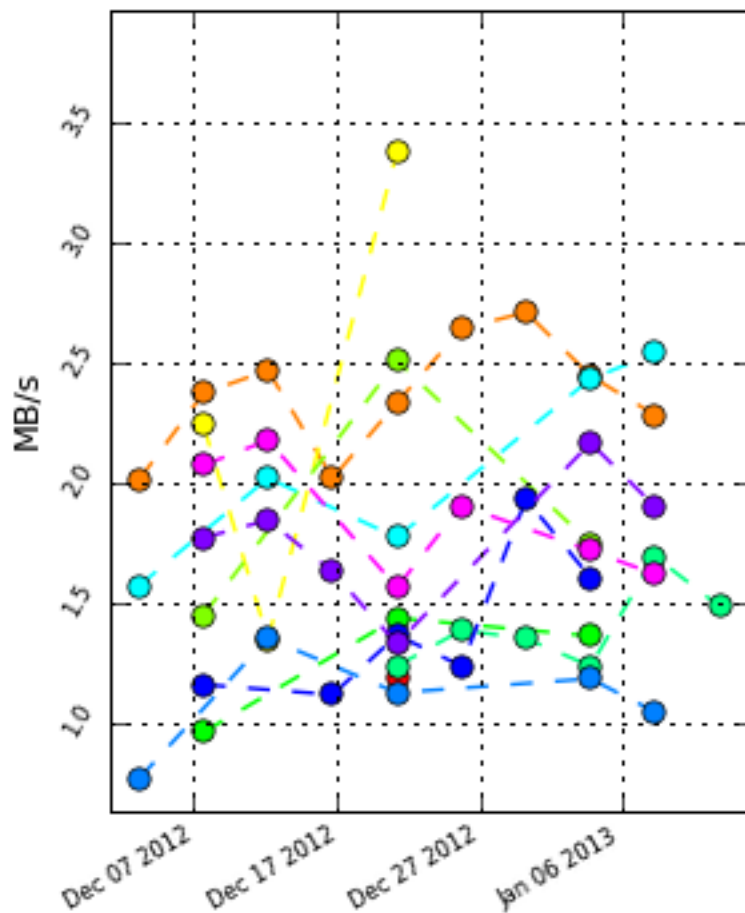
FTS transfer rates per file



to Tier1s

SWT2_CPB

FTS transfer rates per file

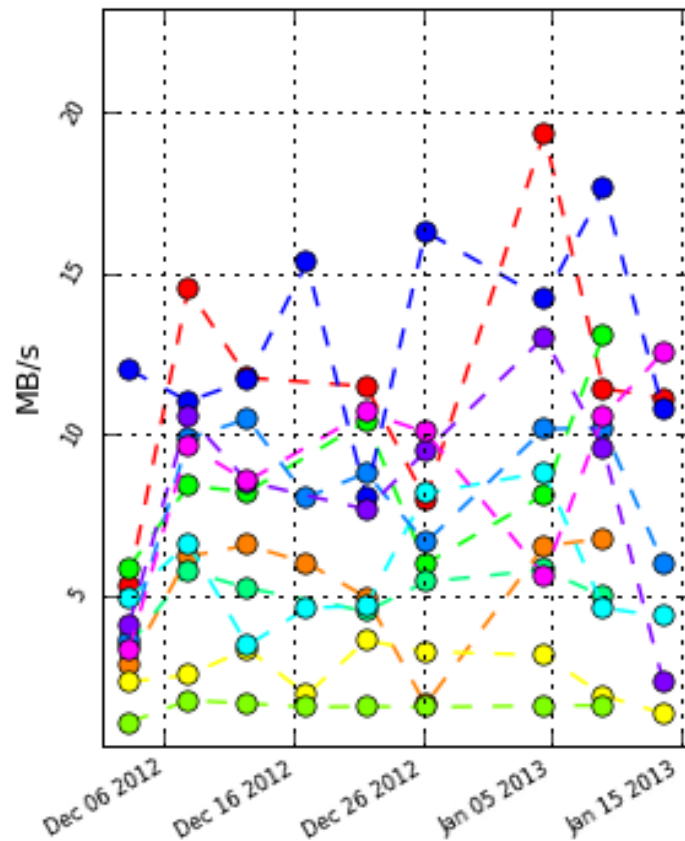


Rates of transfer from Tier1s
to SWT2_CPB

- INFN-T1_DATADISK - SWT2_CPB_DATADISK (5 files)
- BNL-OSG2_DATADISK - SWT2_CPB_DATADISK (17200 files)
- TRIUMF-LCG2_DATADISK - SWT2_CPB_DATADISK (86 files)
- TAIWAN-LCG2_DATADISK - SWT2_CPB_DATADISK (322 files)
- SARA-MATRIX_DATADISK - SWT2_CPB_DATADISK (111 files)
- NIKHEF-ELPROD_DATADISK - SWT2_CPB_DATADISK (2305 files)
- FZK-LCG2_DATADISK - SWT2_CPB_DATADISK (345 files)
- RAL-LCG2_DATADISK - SWT2_CPB_DATADISK (193 files)
- IN2P3-CC_DATADISK - SWT2_CPB_DATADISK (33 files)
- PIC_DATADISK - SWT2_CPB_DATADISK (243 files)
- NDGF-T1_DATADISK - SWT2_CPB_DATADISK (500 files)
- CERN-PROD_DATATAPE - SWT2_CPB_DATADISK (0 files)

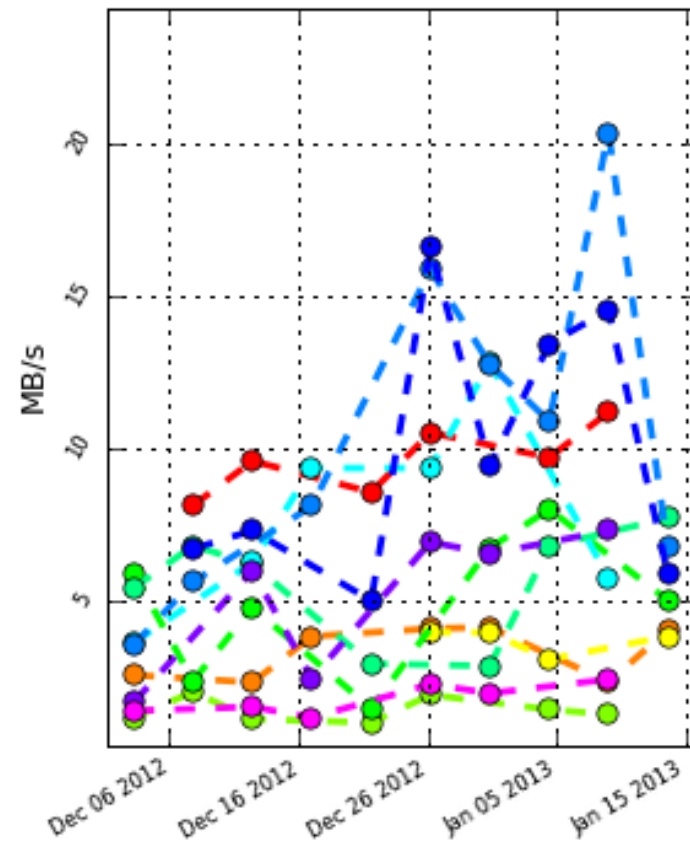
IN2P3-LAPP

FTS transfer rates per file



from Tier1s

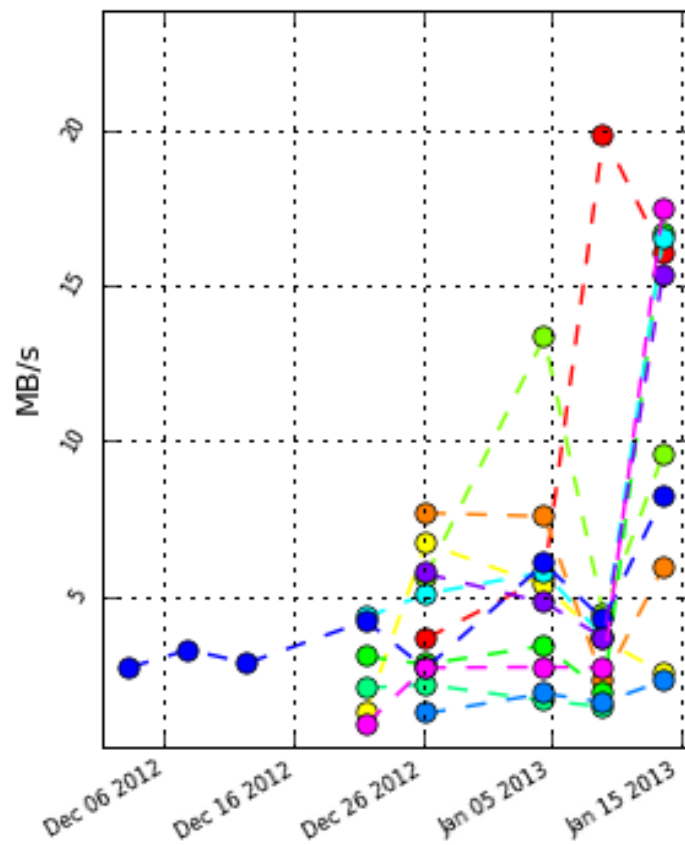
FTS transfer rates per file



to Tier1s

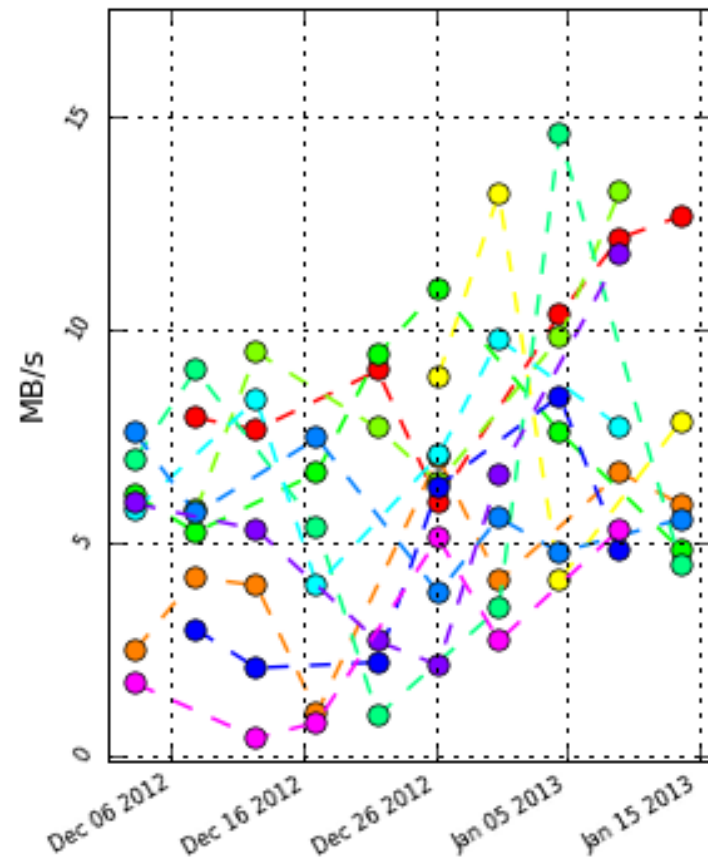
BEIJING-LCG2

FTS transfer rates per file



from Tier1s

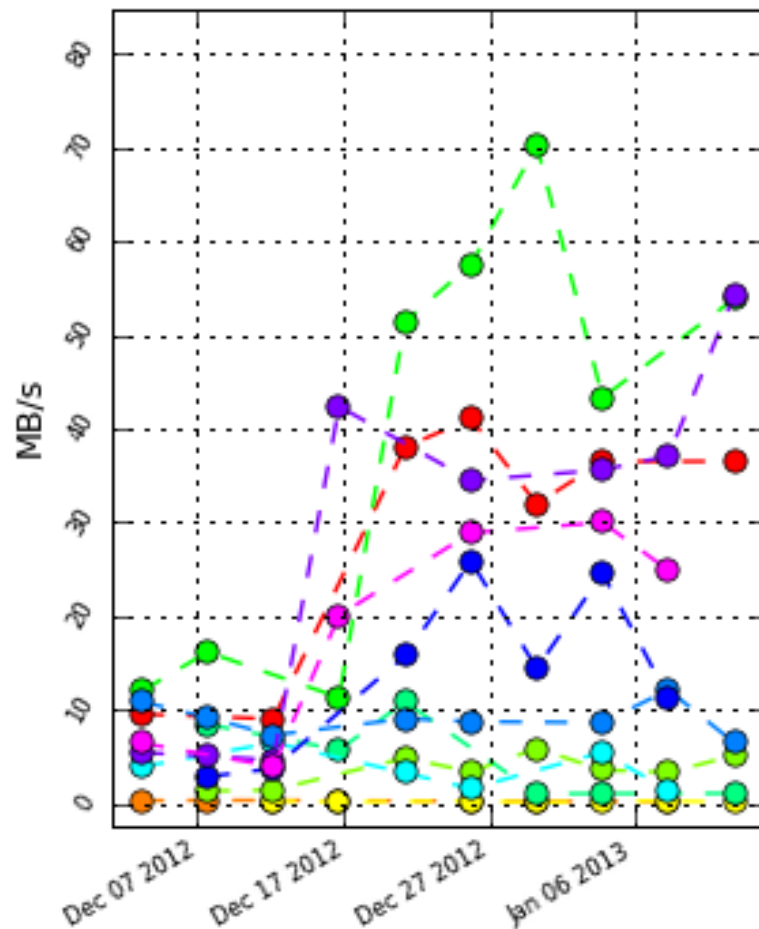
FTS transfer rates per file



to Tier1s

UKI-SCOTGRID-ECDF

FTS transfer rates per file

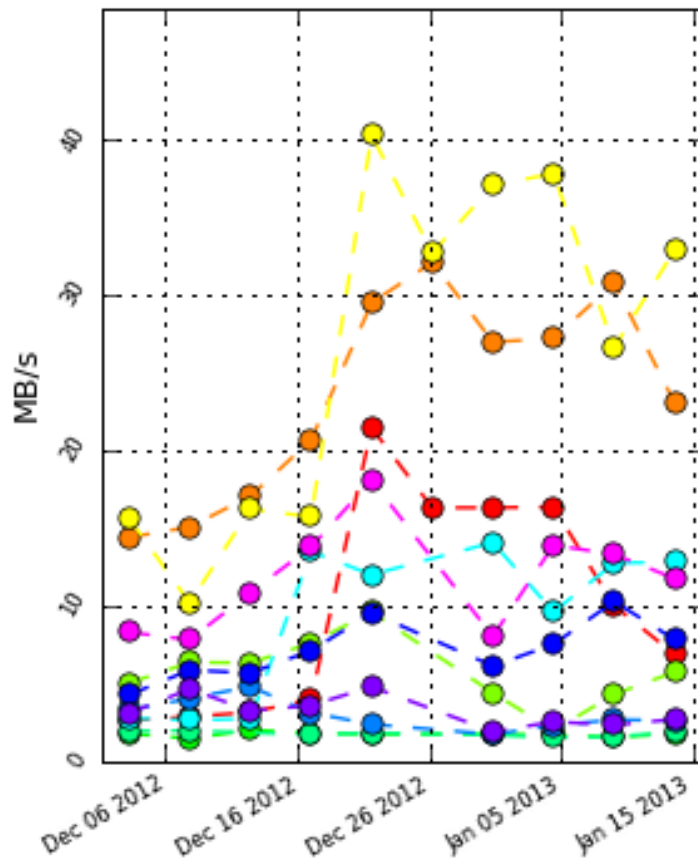


Rates of transfer from UKI-SCOTGRID-ECDF to Tier1s

- UKI-SCOTGRID-ECDF_DATADISK - INFN-T1_DATADISK (243 files)
- UKI-SCOTGRID-ECDF_DATADISK - BNL-OSG2_DATADISK (105 files)
- UKI-SCOTGRID-ECDF_DATADISK - TRIUMF-LCG2_DATADISK (131 files)
- UKI-SCOTGRID-ECDF_DATADISK - TAIWAN-LCG2_DATADISK (636 files)
- UKI-SCOTGRID-ECDF_DATADISK - SARA-MATRIX_DATADISK (597 files)
- UKI-SCOTGRID-ECDF_DATADISK - NIKHEF-ELPROD_DATADISK (30 files)
- UKI-SCOTGRID-ECDF_DATADISK - FZK-LCG2_DATADISK (31 files)
- UKI-SCOTGRID-ECDF_DATADISK - RAL-LCG2_DATADISK (1571 files)
- UKI-SCOTGRID-ECDF_DATADISK - IN2P3-CC_DATADISK (448 files)
- UKI-SCOTGRID-ECDF_DATADISK - PIC_DATADISK (78 files)
- UKI-SCOTGRID-ECDF_DATADISK - NDGF-T1_DATADISK (49 files)
- UKI-SCOTGRID-ECDF_DATADISK - CERN-PROD_DATATAPE (0 files)

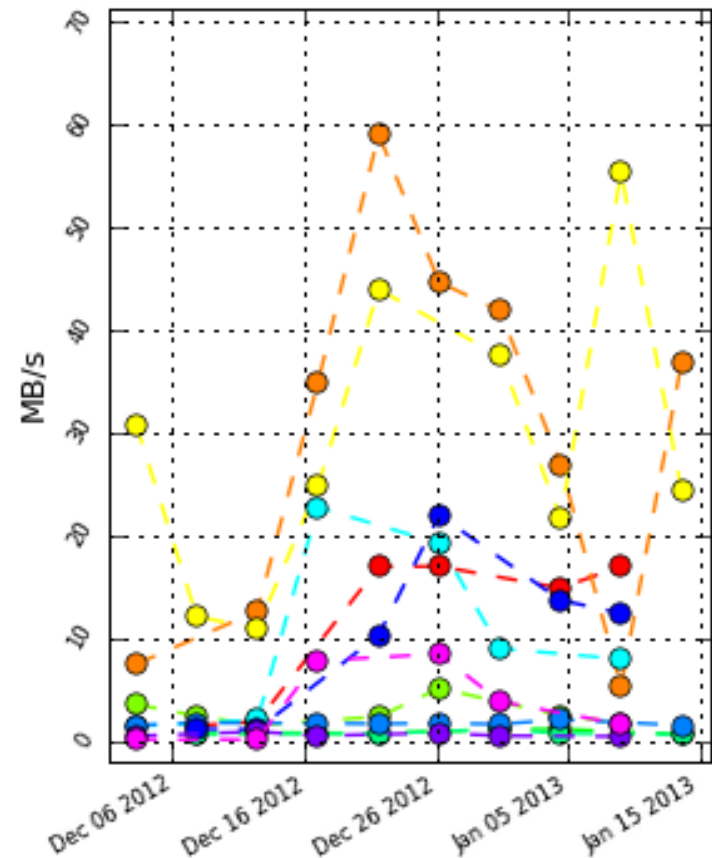
CA-MCGILL-CLUMEQ-T2

FTS transfer rates per file



from Tier1s

FTS transfer rates per file



to Tier1s

Back-up

Sites that were reported with degraded perf on ADC Weekly
Tuesday, 4th Dec 2012

BEIJING-LCG2

CA-MCGILL-CLUMEQ-T2

CA-VICTORIA-WESTGRID-T2

IN2P3-LAPP

INFN-MILANO-ATLASC

SWT2 _CPB

UKI-SCOTGRID-ECDF