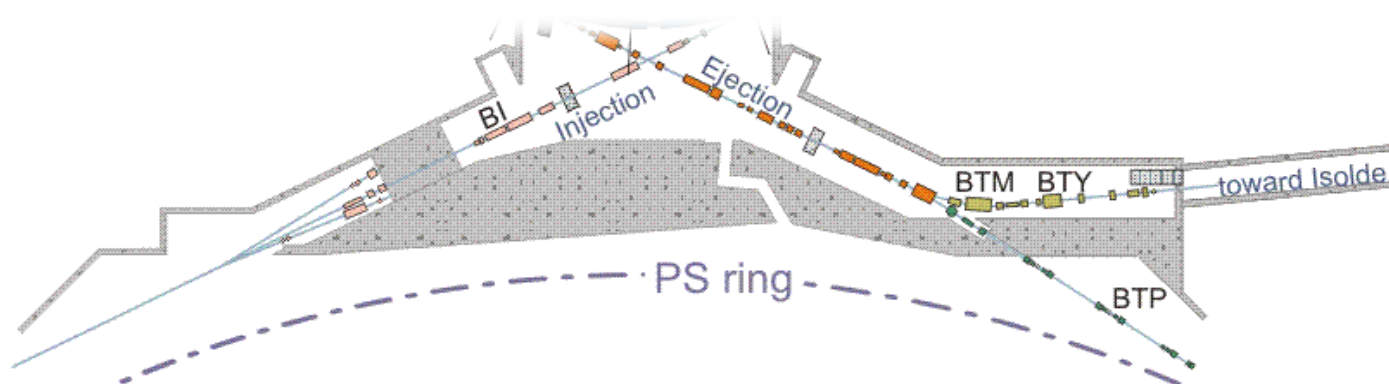


Bulding 245 schedule update

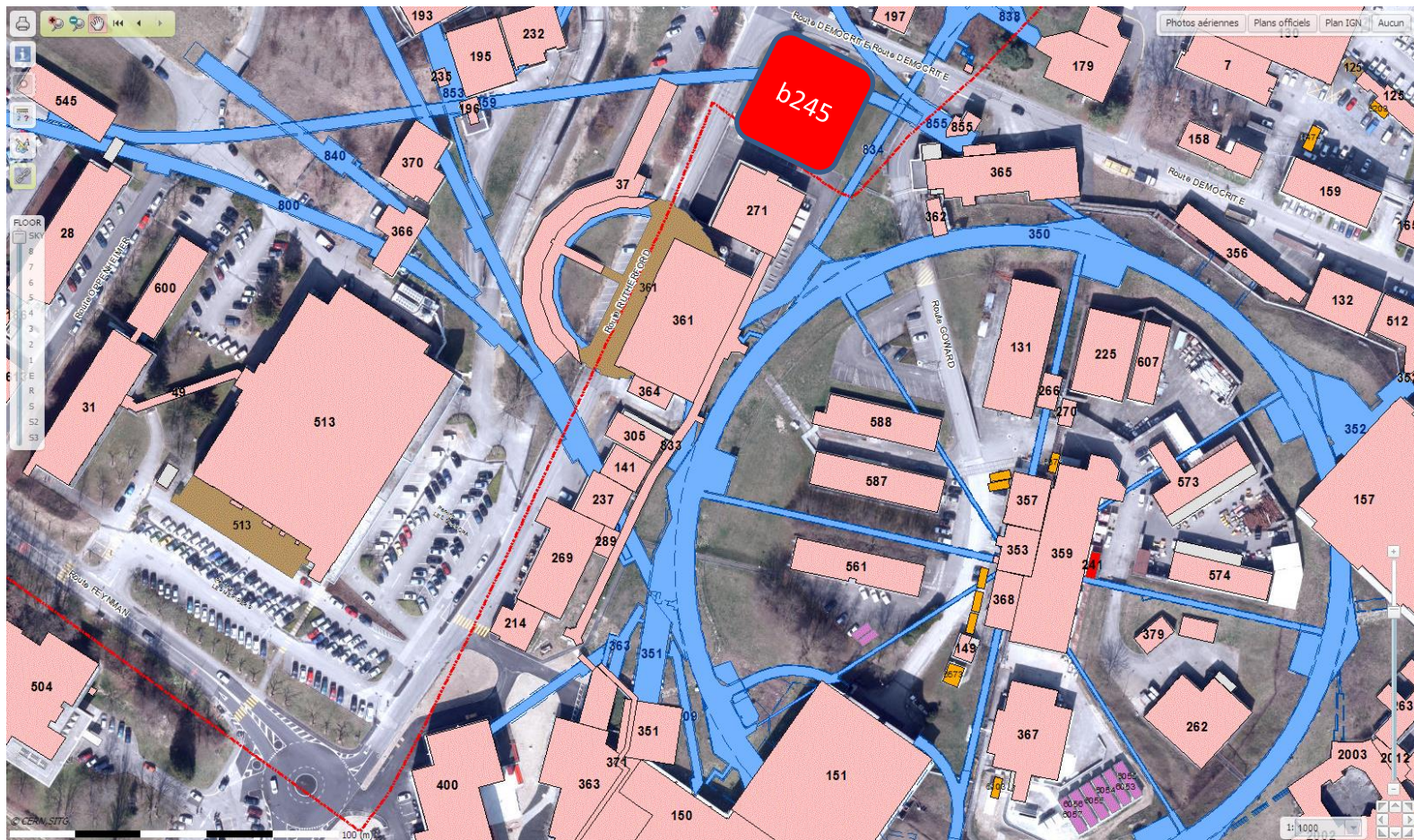


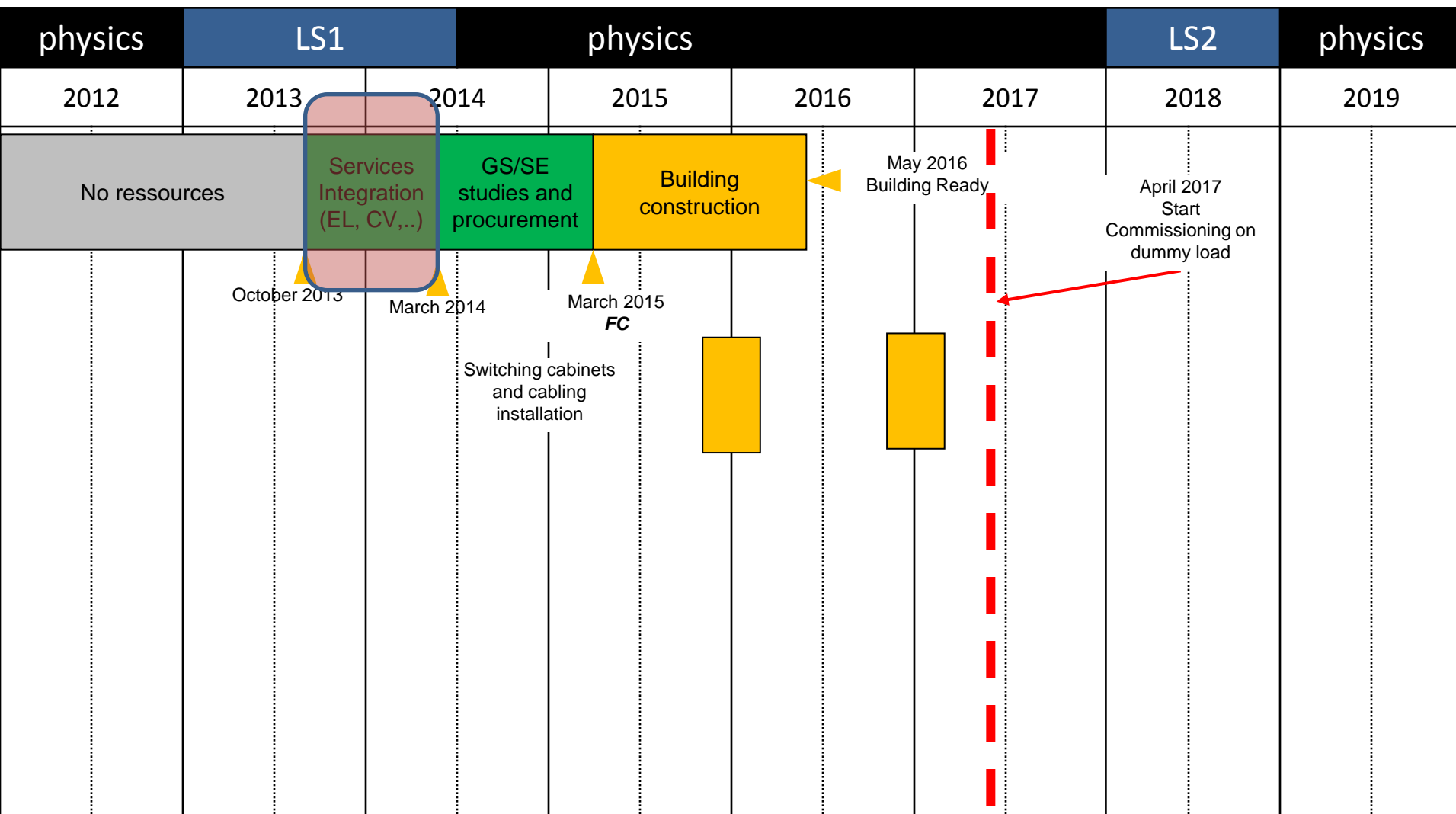
LIU Booster Meeting 30-01-2014

Fulvio Boattini

TE-EPC

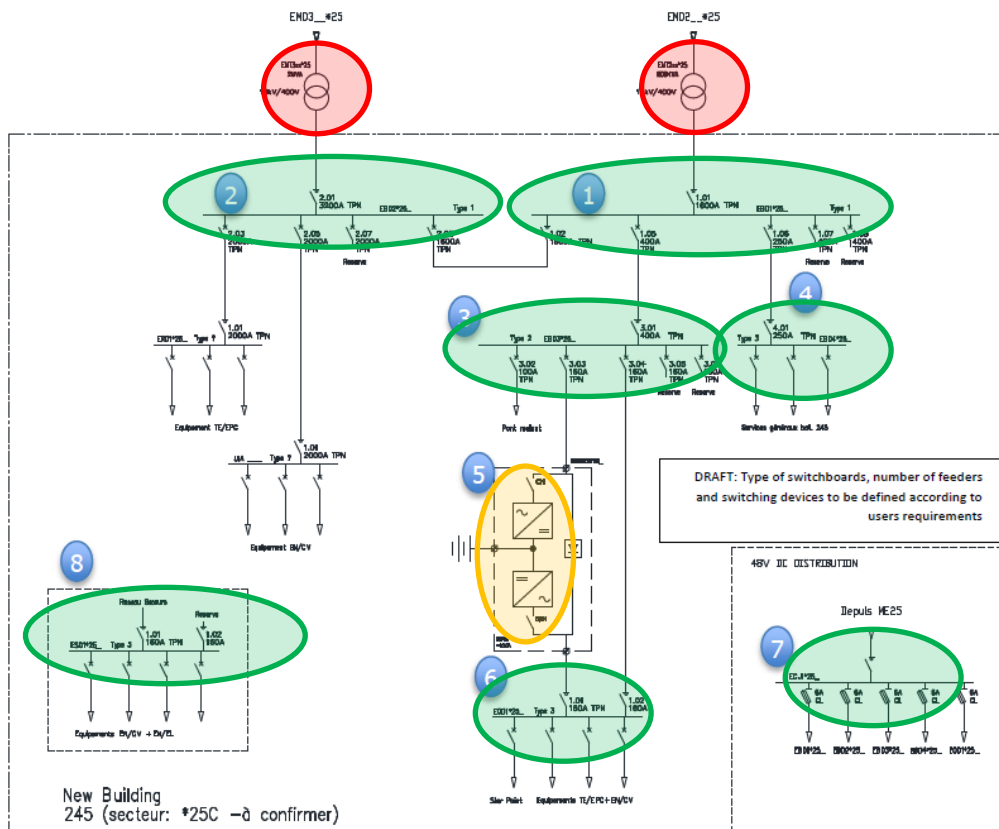
Building 245 position





△

EN/EL prepared the first schematic of the LV network is now available.



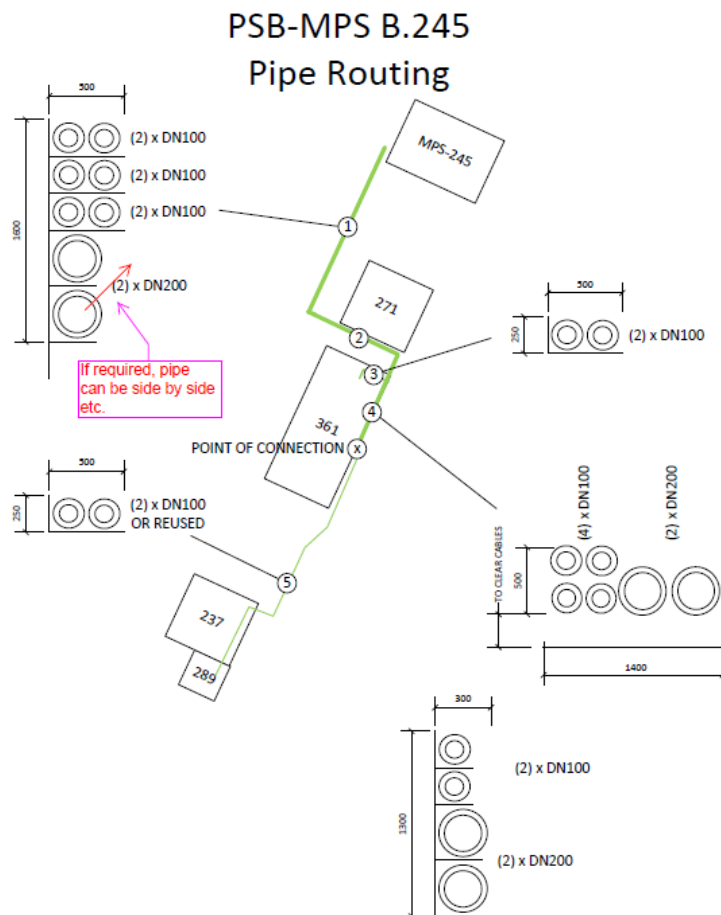
Transformers:
18k/0.4kV 2MVA; 800kVA

Switching cabinets

An UPS

Building 245: cooling pipes

EN/CV proposed a path for the pipeworks



G. MASON EN-CV
5/12/13

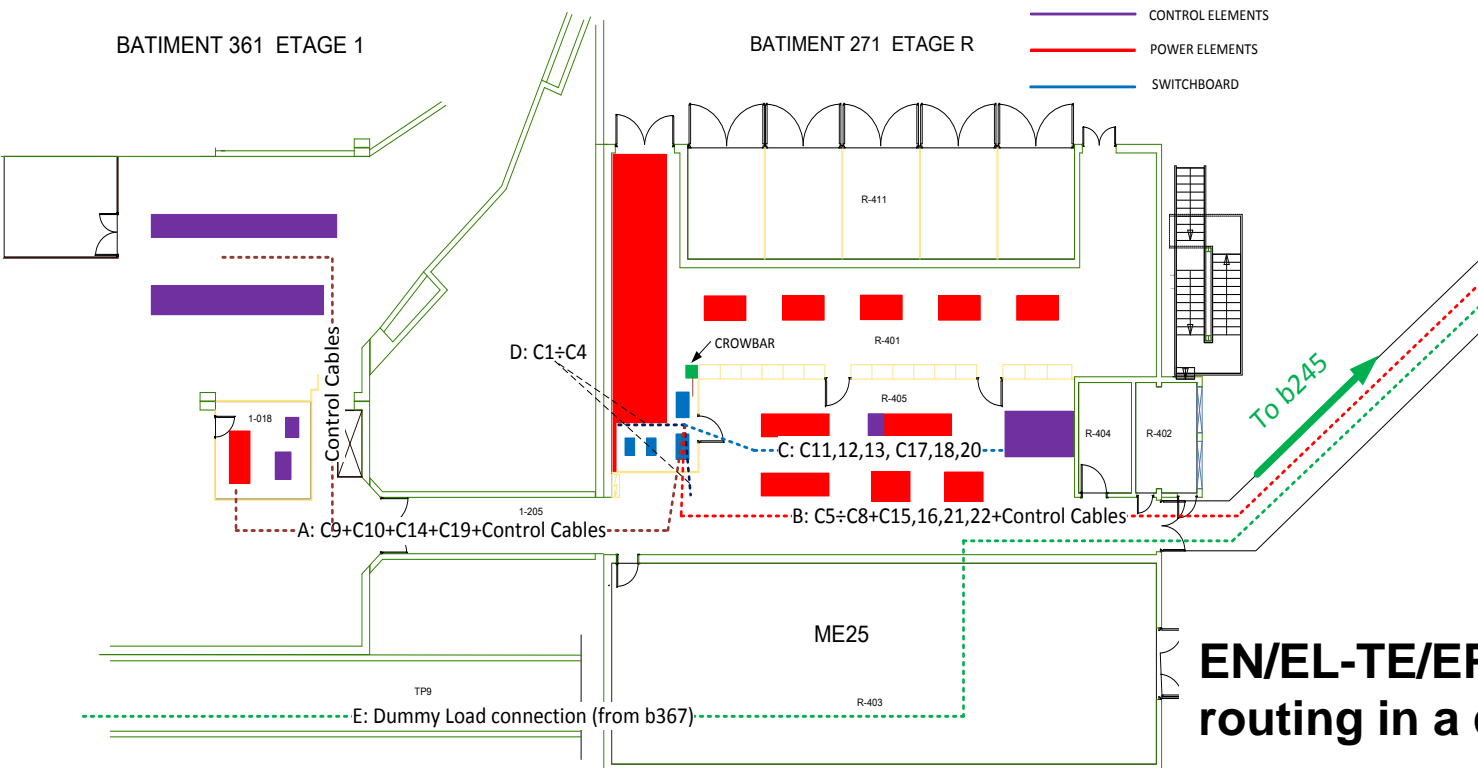
- 2 DN200 + 2DN100 pipes for PSB magnets cooling (from b245 to b361)
- 2 DN100 pipes for chilled water (from b361 to b245)
- 2 DN100 pipes for TT2 cooling (from b245 to b289)

Building 245: power cables

TE/EPC presented power cables paths

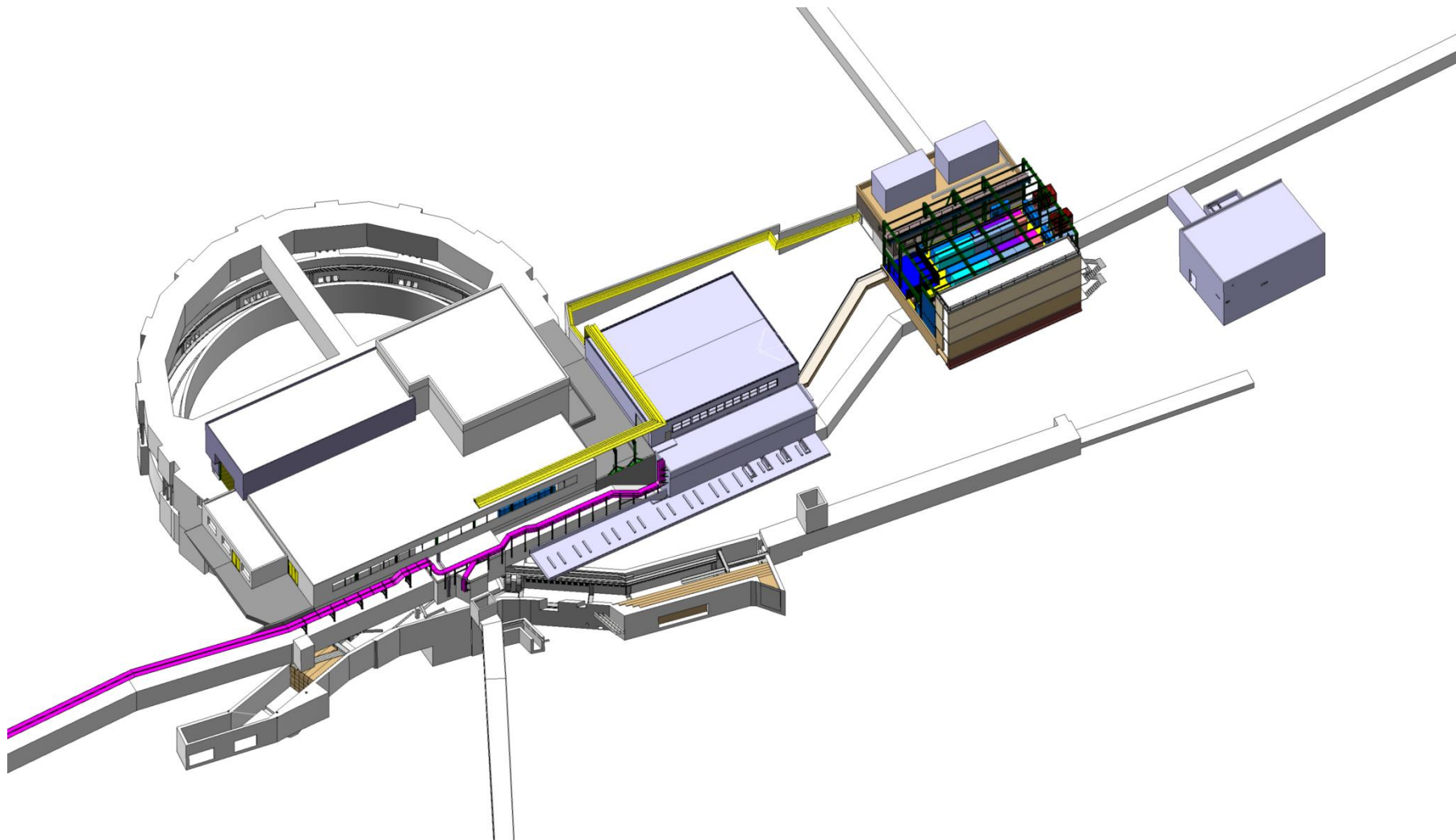
No spare magnets are needed anymore inside b245 as POPS spare magnets will be used for commissioning

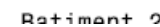
18kV cables still to be added



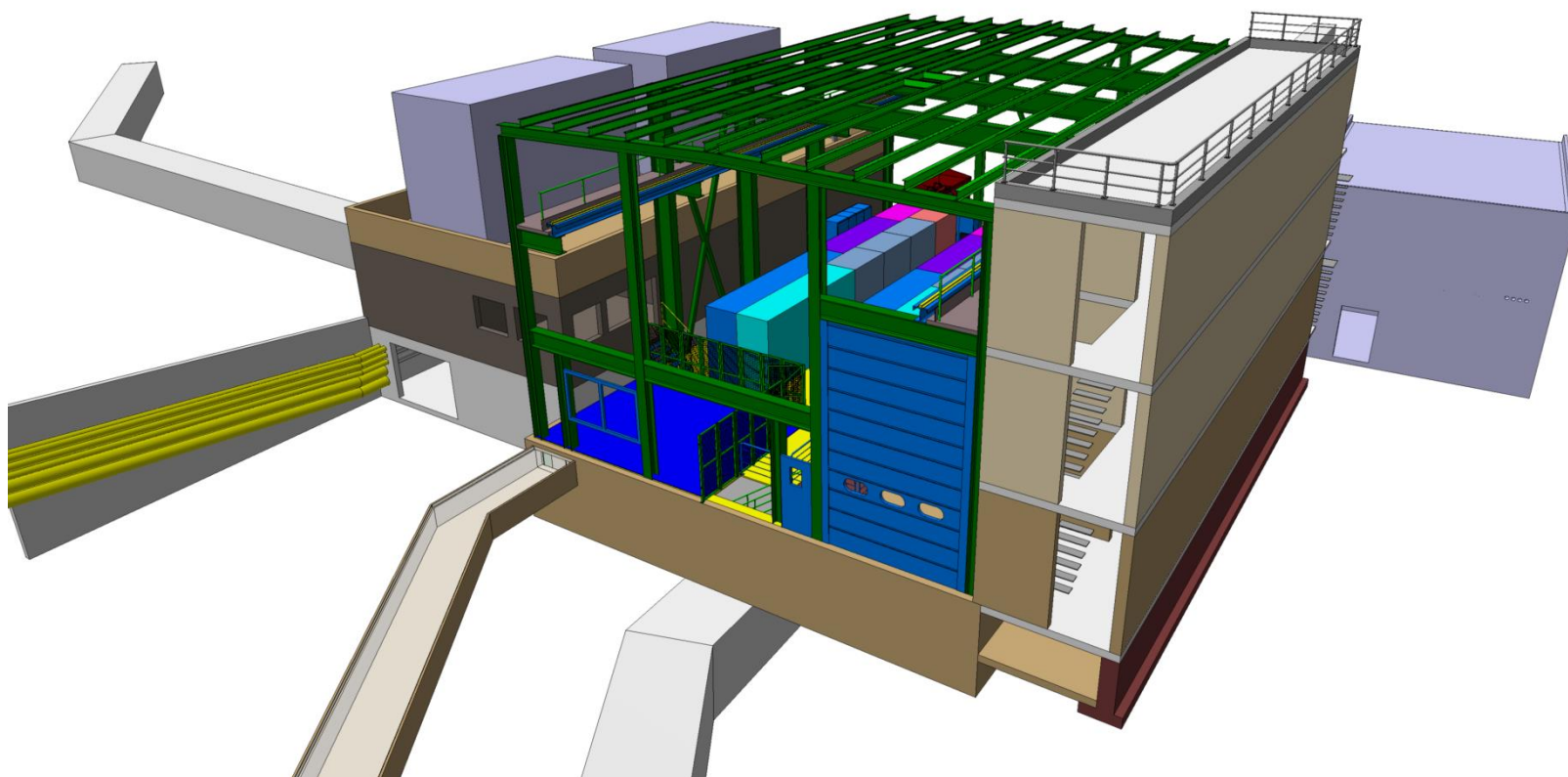
EN/EL-TE/EPC shall verify the routing in a cad model

Building 245 layout

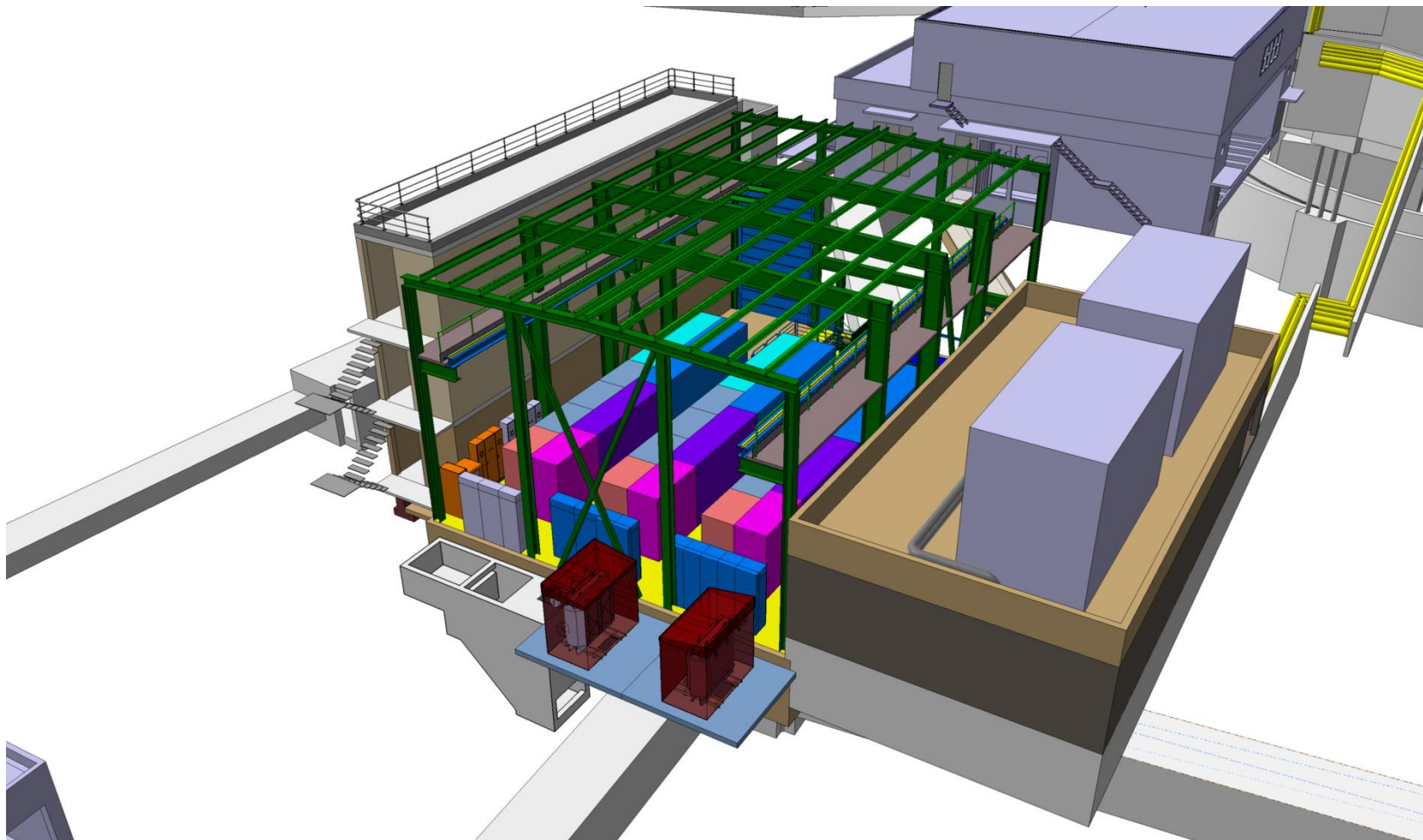




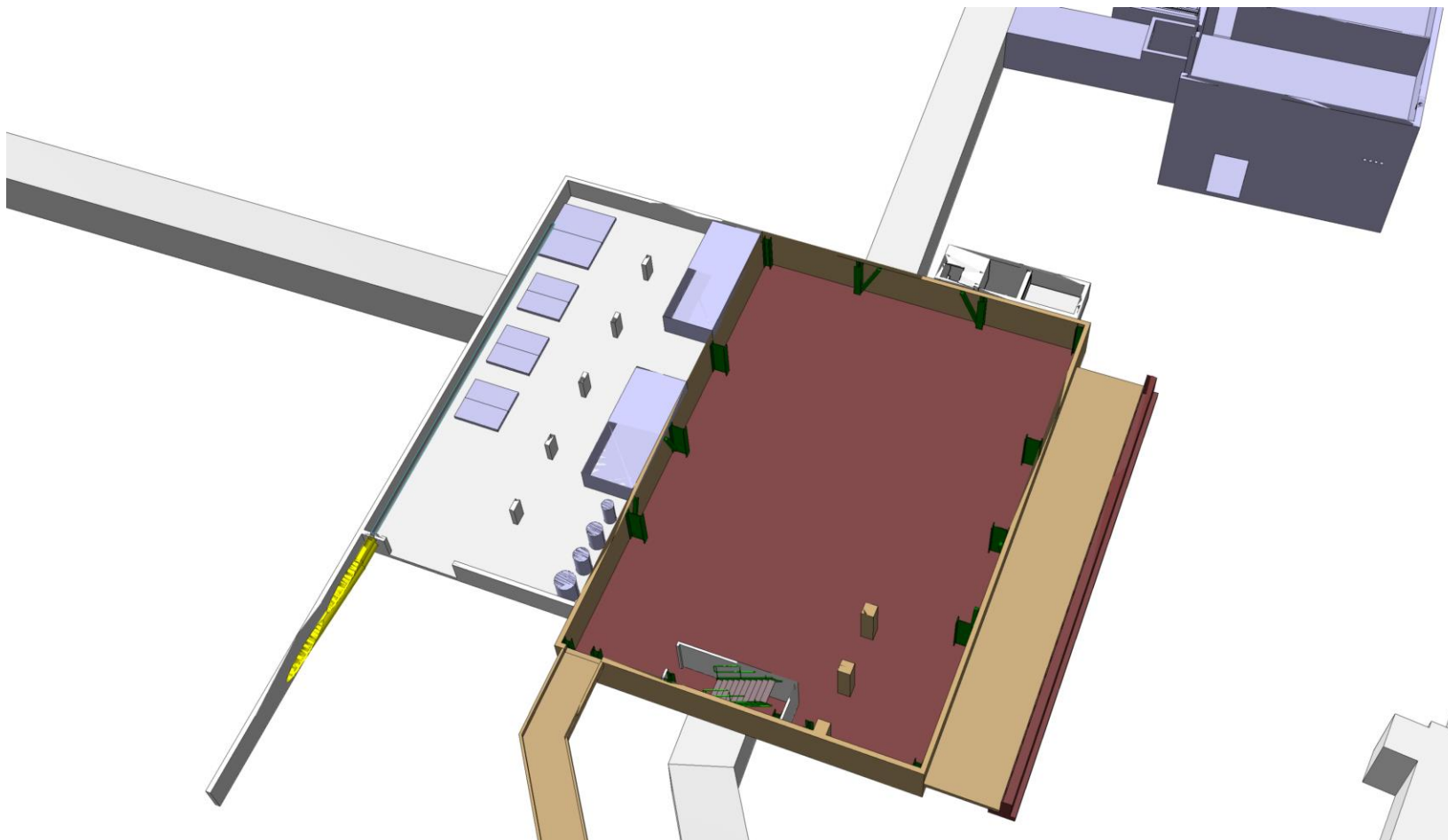
Building 245 layout (b271 side)



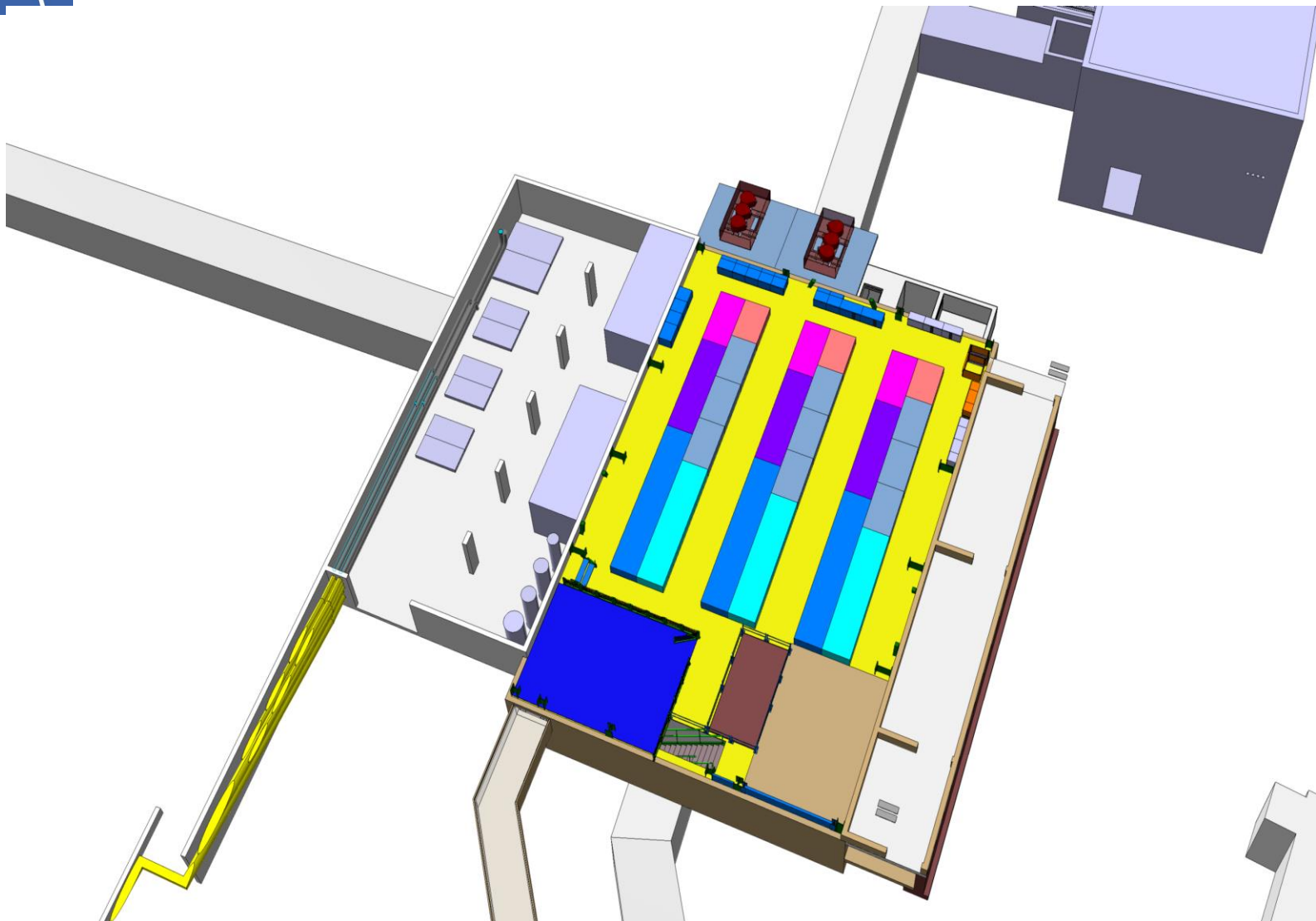
Building 245 layout (Isolde side)



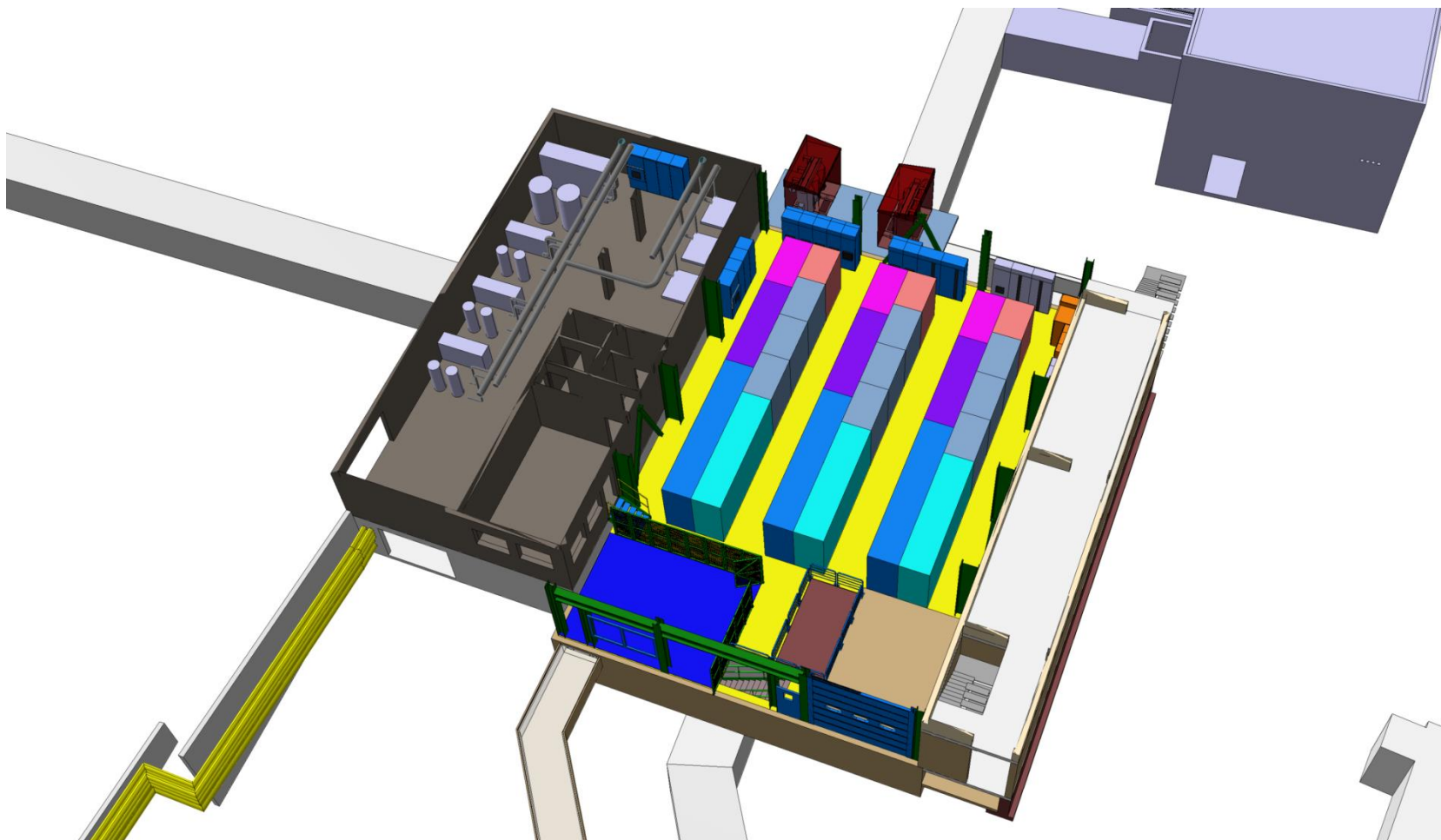
Building 245 layout



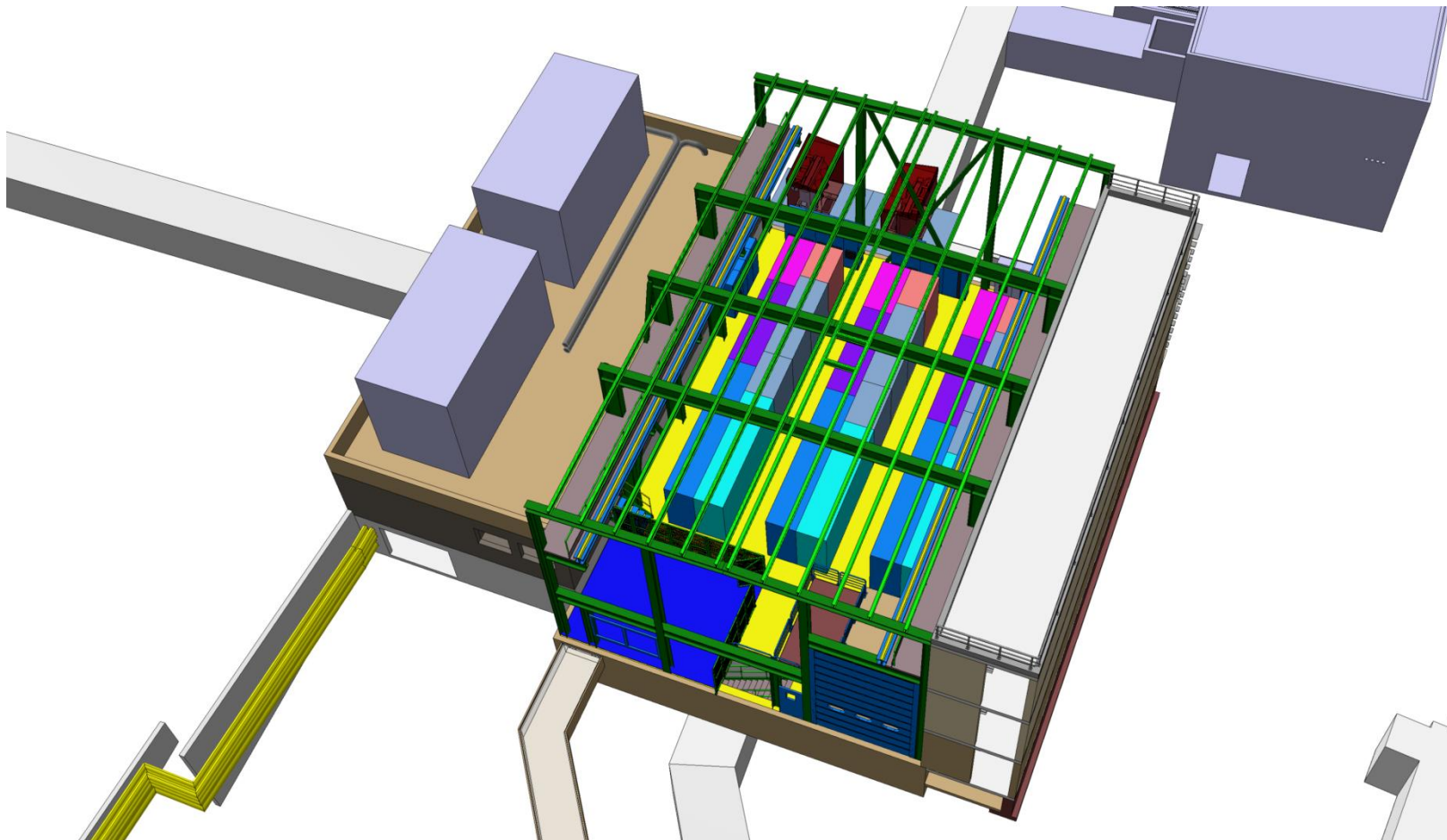
Building 245 layout

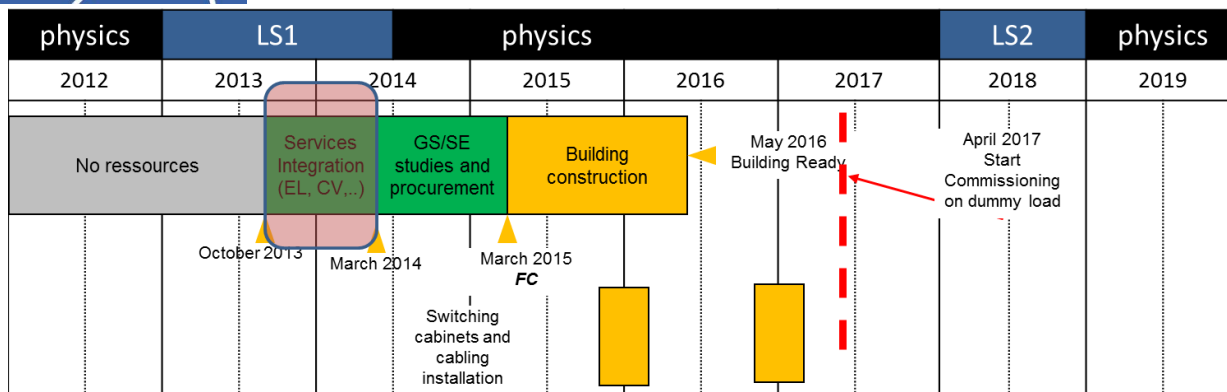


Building 245 layout



Building 245 layout





INTEGRATION PROJECT OPEN POINTS:

- EN/CV needs to work more on layout design of the cooling part
- EN/EL TE/EPC need to find a solution for the EN/EL cabinets layout. EN/EL is starting to test two solutions on the 3D model but more detailed input from EN/CV is needed.
- Cost estimation needs to be provided by all services of the building

INTEGRATION PROJECT CRITICAL POINTS:

- EN/CV announced Glen will have no time for completing the design the cooling components. Michel will replace him during his absence, but in the whole process we take more than one month of delay.



Bulding 245 schedule update



THANKS FOR THE ATTENTION

QUESTIONS?

EN/EL proposal for Electrical Room

